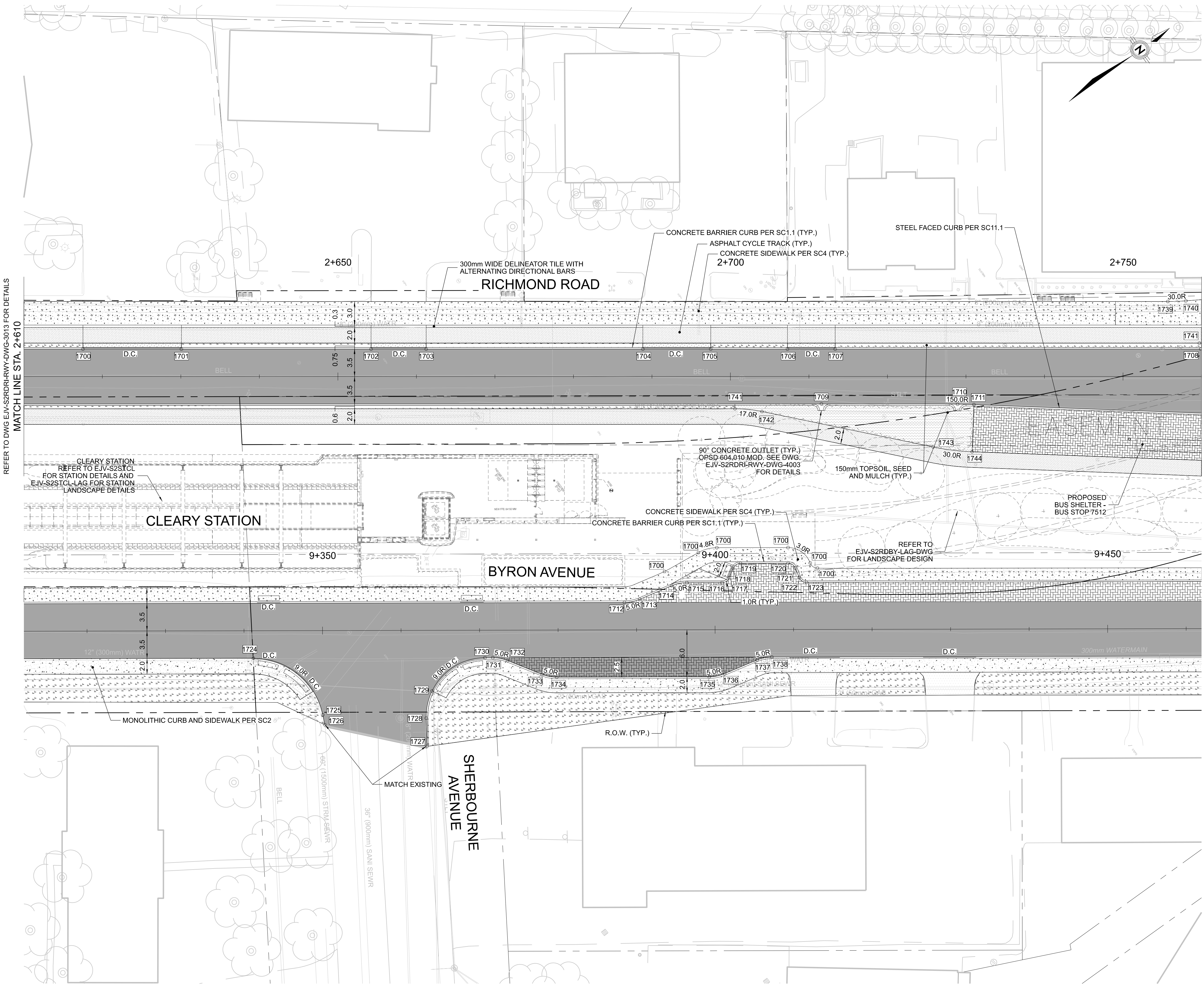




TITLEBLOCK: 883.6mm x 558.6mm EJV 2019

4/15/2021 11:11:35 AM c:\pwworking\hmark.shubaly@wsp.com\d0887108\EJV-S2RDRI-RWY-DWG-3000\THRU0300.dgn



REFER TO DWG EJV-S2RDRI-RWY-DWG-3013 FOR DETAILS
MATCH LINE STA. 2+610

REFER TO DWG EJV-S2RDRI-RWY-DWG-3015 FOR DETAILS
MATCH LINE STA. 2+760

STAGE 2 Confederation EAST Confederation WEST

Ottawa

DRAWING NAME: RICHMOND ROAD (COMPLETE STREETS) INCL. BYRON LINEAR PARK SEGMENT 2
 GEOMETRY AND GENERAL LAYOUT 15 RICHMOND ROAD & BYRON AVENUE RICHMOND CONTROL 2+610 TO 2+760

CONTRACT No. LRT19-1019

DESIGNED: M. BATCHOURIKHINA
 CHECKED: P. HILL
 DRAWN: M. SHUBALY
 SEALED

DRAWING NUMBER: EJV-S2RDRI-RWY-DWG-3014
 ENGINEERING JV

EWCD DESIGNERS

SCALE: HORIZONTAL 1:250 22"x34" 1:500 11"x17" VERTICAL 22"x34" 11"x17"

REV	DESCRIPTION	BY	DATE
A	ISSUED FOR PRE-FINAL DESIGN DEVELOPMENT - DBJV REVIEW	KC	2021-02-08
B	ISSUED FOR PRE-FINAL DESIGN DEVELOPMENT	KC	2021-02-25
C	ISSUED FOR FINAL DESIGN DEVELOPMENT - DBJV REVIEW	KC	2021-03-24
D	ISSUED FOR FINAL DESIGN DEVELOPMENT	KC	2021-04-15

NO PART OF THIS DOCUMENT MAY BE REPRODUCED, PUBLISHED, CONVERTED, OR STORED IN ANY DATA RETRIEVAL SYSTEM, OR TRANSMITTED IN ANY FORM BY ANY MEANS (ELECTRONIC, MECHANICAL, PHOTOCOPYING, RECORDING, OR OTHERWISE) WITHOUT THE PROPER WRITTEN PERMISSION.

LAYOUT INFORMATION BASED ON 3 DEGREE MTM ZONE 9 NAD 83 ORIGINAL COORDINATE SYSTEM. COMBINED SCALE FACTOR 0.9999

PRELIMINARY NOT FOR CONSTRUCTION
2021-04-15

REINSTATEMENT

- FULL DEPTH ASPHALT
- PARTIAL DEPTH ASPHALT
- ASPHALT DRIVEWAY/ SIDEWALK
- ASPHALT CYCLE TRACK
- CONCRETE SIDEWALKS, MEDIANS AND PLATFORMS
- CONCRETE PAVING STONES
- LANDSCAPING - TOPSOIL, SEED AND MULCH
- LANDSCAPING - TOPSOIL AND SOD
- LANDSCAPING - BIO-SWALE
- 300mm WIDE DELINEATOR TILE WITH ALTERNATING DIRECTIONAL BARS

ROW LINES ARE APPROXIMATE AND BASED ON CITY PROVIDED PROPERTY REQUEST PLANS (PRP). ANY PROPOSED CONSTRUCTION WITHIN 1m OF A PROPERTY LIMIT REQUIRES THAT A LICENSED ONTARIO LAND SURVEYOR BE ENGAGED AS PER SCHEDULE 15-2 PART 1 ARTICLE 4.2.