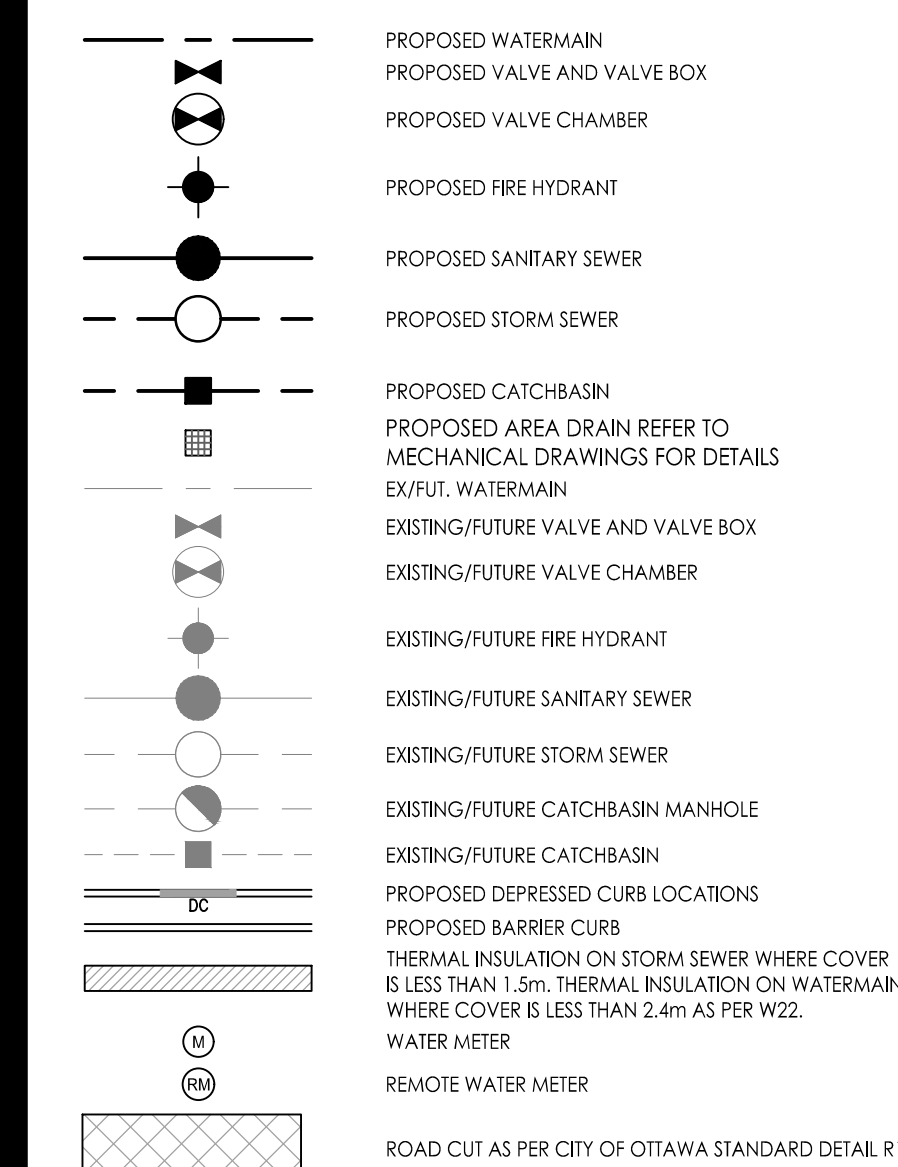


Stantec Consulting Ltd.
400 - 1331 Clyde Avenue
Ottawa ON
Tel. 613.722.4420
www.stantec.com

Copyright Reserved

The Contractor shall verify and be responsible for all dimensions. DO NOT scale the drawings - any errors or omissions shall be reported to Stantec without delay. The Copyrights to all designs and drawings are the property of Stantec. Reproduction or use for any purpose other than that authorized by Stantec is forbidden.

Legend



Notes

- ALL CATCH BASINS AND TRENCH DRAINS TO BE CONNECTED TO INTERNAL PLUMBING AND COLLECTED IN STORM WATER MANAGEMENT CISTERN.
- FINAL METER AND REMOTE METER LOCATIONS TO BE CONFIRMED BY MECHANICAL CONSULTANT.
- THE LOCATION OF UTILITIES IS APPROXIMATE ONLY AND THE EXACT LOCATION SHOULD BE DETERMINED BY CONSULTING THE MUNICIPAL AUTHORITIES AND UTILITY COMPANIES CONCERNED. THE CONTRACTOR SHALL PROVIDE THE LOCATION OF UTILITIES AND SHALL BE RESPONSIBLE FOR THEIR PROTECTION AND THE IMPLEMENTATION OF ANY NECESSARY PROCEDURES CALLED FOR IN THE APPROPRIATE STANDARDS AND REGULATIONS.
- INTERNAL PLUMBING AND SUMP PUMPS TO BE DESIGNED BY THE MECHANICAL CONSULTANT.
- STORMWATER MANAGEMENT TO BE PROVIDED THROUGH A 50m³ CISTERN LOCATED IN THE UNDERGROUND PARKING.
- MAX. CISTERN RELEASE RATE TO STORM SEWER = 166.2L/s
- BOOSTER PUMPS TO BE PROVIDED TO MAINTAIN MINIMUM PRESSURES FOR TOWERS 4 STOREYS AND HIGHER.
- SUMP PUMP REQUIRED TO DISCHARGE TO INTERNAL SANITARY SEWER (REFER TO MECHANICAL DRAWINGS FOR DETAILS)
- FLOOR DRAINS LOCATED INSIDE PARKING GARAGE TO BE CONNECTED TO BUILDING INTERNAL SANITARY SEWER.
- USF TO BE CONFIRMED BY THE STRUCTURAL CONSULTANT.

Revision	By	Appd.	YY.MM.DD
3	MJS	DT	24.01.15
2	MJS	DT	23.03.02
1	MJS	DT	22.07.05
0	MJS	AMP	21.06.09

File Name:	MJS	AMP	MJS	21.06.01
Permit/Seal	Dwn.	Chkd.	Dgn.	YY.MM.DD
160401536 DB DWG				

Client/Project
BRIGEL HOMES
98 LOIS STREET
GATINEAU, QC
J8Y 3B7
MOONEY'S BAY
729 RIDGEWOOD AVENUE
OTTAWA, ON, CANADA

Title
SITE SERVICING PLAN

Project No.	Scale	Sheet	Revision
160401536	1:300	3 of 7	3

Drawing No. **SSP-1** 3 of 7 **3**
Revision
D07-12-2-0089
PLAN # 18552

SCHEDULE OF ROOF RELEASE RATES

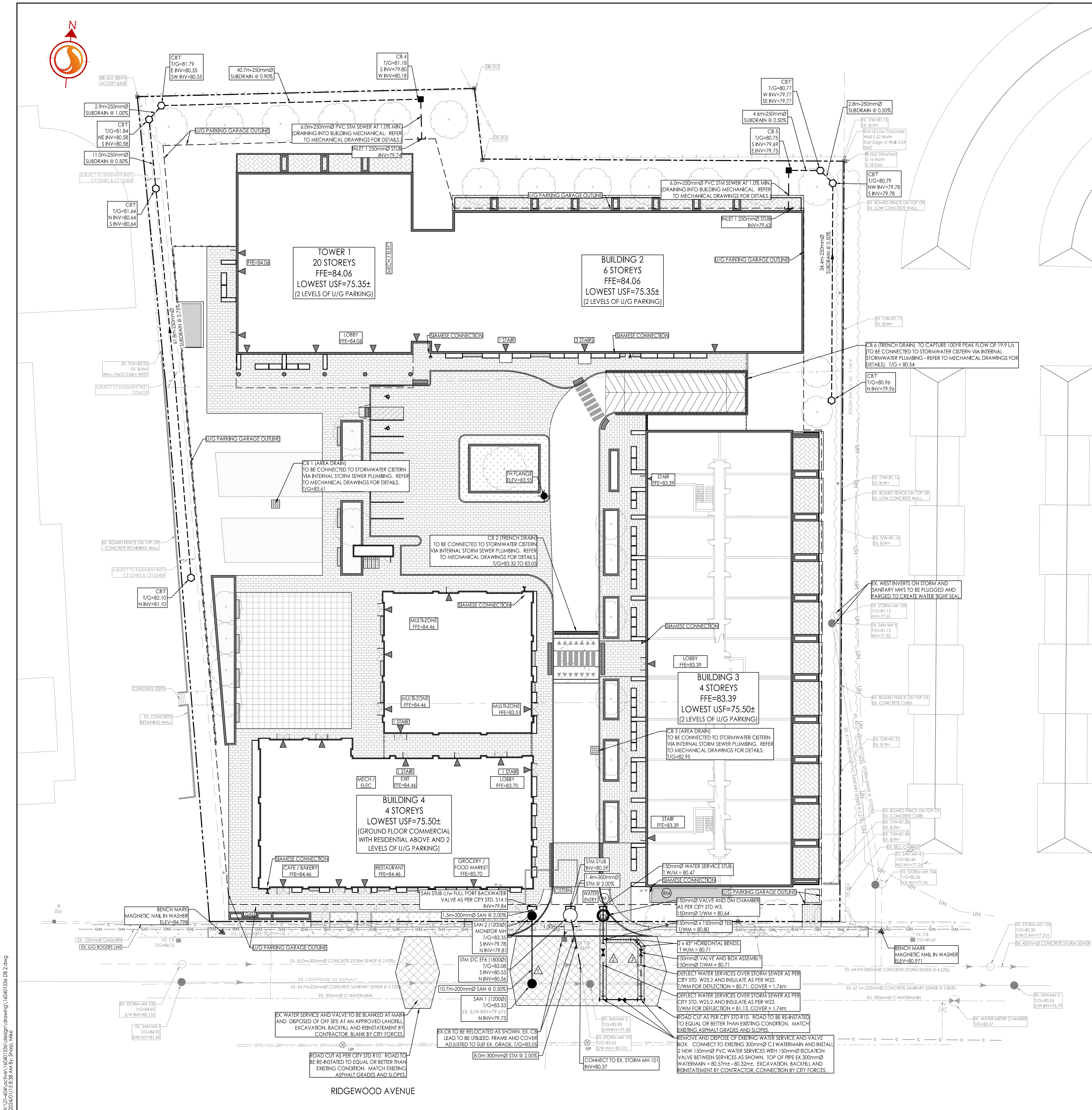
DRAIN TYPE	TRIBUTARY AREA ID	# OF DRAINS	100YR Head (m)	100YR RELEASE RATE (L/s)
WATTS ACCURFLOW (50% OPEN)	ROOF 1	6	0.138	7.1
WATTS ACCURFLOW (100% OPEN)	ROOF 2	8	0.105	10.6
WATTS ACCURFLOW (75% OPEN)	ROOF 3	6	0.146	9.2
WATTS ACCURFLOW (100% OPEN)	ROOF 4	4	0.148	7.5

SEWER AND WATERMAIN CROSSING TABLE

CROSSING	STM INV	STM OBV	SAN INV	SAN OBV	WTR TOP	WTR BIM
▲	80.53 (80.46)	80.83 (80.90)	79.75	79.95	81.13	80.98
▲	80.11 (80.04)	80.41 (80.48)	79.28 (79.21)	79.51 (79.58)	81.13	80.98
▲	79.84 (79.77)	80.14 (80.21)	79.04 (78.97)	79.27 (79.34)	80.86	80.71

ICD TABLE

CATCHBASIN ID	TRIBUTARY AREA ID	ICD TYPE	2YR HEAD (m)	100YR HEAD (m)	2YR FLOW (L/s)	100YR FLOW (L/s)
CB 4	TANK 4	VORTEX LMF 80	1.38	1.66	6.7	7.4
CB 5	TANK 5	VORTEX LMF 80	0.44	1.21	3.8	6.3



RIDGEWOOD AVENUE

1:300
2024/01/15 3:28 PM BY SP/STP/MS/MS
C:\Users\stg\OneDrive\Documents\160401536 DB DWG
ORIGINAL SHEET - ARCH D