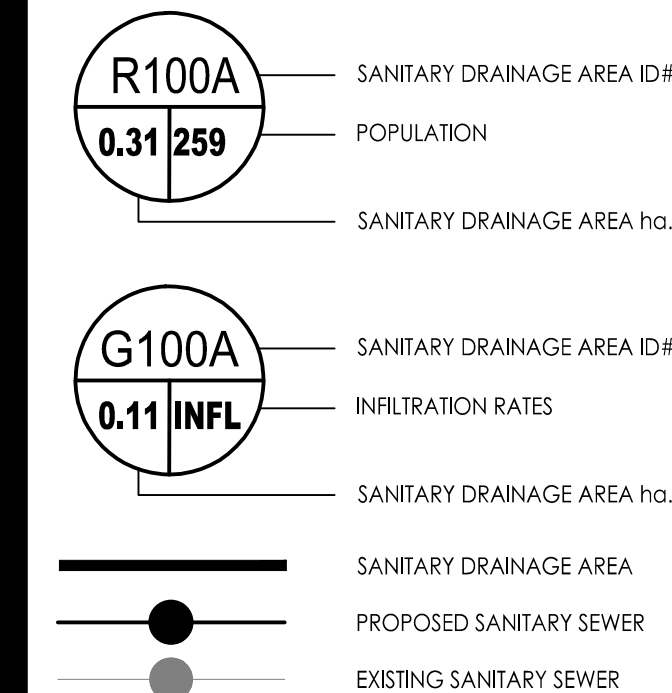


Stantec Consulting Ltd.  
400 - 1331 Clyde Avenue  
Ottawa ON  
Tel. 613.722.4420  
www.stantec.com

Copyright Reserved  
The Contractor shall verify and be responsible for all dimensions. DO NOT scale the drawing - any errors or omissions shall be reported to Stantec without delay.  
The Copyrights to all designs and drawings are the property of Stantec. Reproduction or use for any purpose other than that authorized by Stantec is forbidden.

### Legend



### Notes

SANITARY STATS	
<b>POPULATION COUNT</b>	
<b>TOWER 1 and BUILDING 2</b>	
37 - STUDIO APTS @ 1.4PPU = 52 PEOPLE	
167 - 1 BEDROOM APTS @ 1.4PPU = 234 PEOPLE	
88 - 2 BEDROOM APTS @ 2.1PPU = 185 PEOPLE	
10 - 3 BEDROOM APTS @ 3.1PPU = 31 PEOPLE	
<b>TOTAL POPULATION TOWER 1+BUILDING 2 = 502 PEOPLE</b>	
<b>BUILDING 3</b>	
30 - STUDIO APTS @ 1.4PPU = 42 PEOPLE	
41 - 1 BEDROOM APTS @ 1.4PPU = 57 PEOPLE	
16 - 2 BEDROOM APTS @ 2.1PPU = 34 PEOPLE	
<b>TOTAL POPULATION TOWER 3 = 133 PEOPLE</b>	
<b>BUILDING 4</b>	
6 - STUDIO APTS @ 1.4PPU = 8 PEOPLE	
33 - 1 BEDROOM APTS @ 1.4PPU = 46 PEOPLE	
15 - 2 BEDROOM APTS @ 2.1PPU = 32 PEOPLE	
<b>TOTAL POPULATION TOWER 4 = 86 PEOPLE</b>	
COMMERCIAL AREA = 700m <sup>2</sup> (0.07ha)	
<b>TOTAL POPULATION = 721</b>	
<b>TOTAL COMMERCIAL SPACE = 700m<sup>2</sup> (0.07ha) @ 28,000 L/ha/day</b>	

Revision	By	Appd.	YY.MM.DD	
3	REVISED AS PER CITY COMMENTS	MJS	DT	24.01.15
2	REVISED AS PER CITY COMMENTS	MJS	DT	23.03.02
1	REVISED AS PER CITY COMMENTS	MJS	DT	22.07.05
0	ISSUED FOR SPA	MJS	AMP	21.06.09

File Name:	MJS	AMP	MJS	21.06.01
160401536 DB DWG	Dwn.	Chkd.	Dgn.	YY.MM.DD

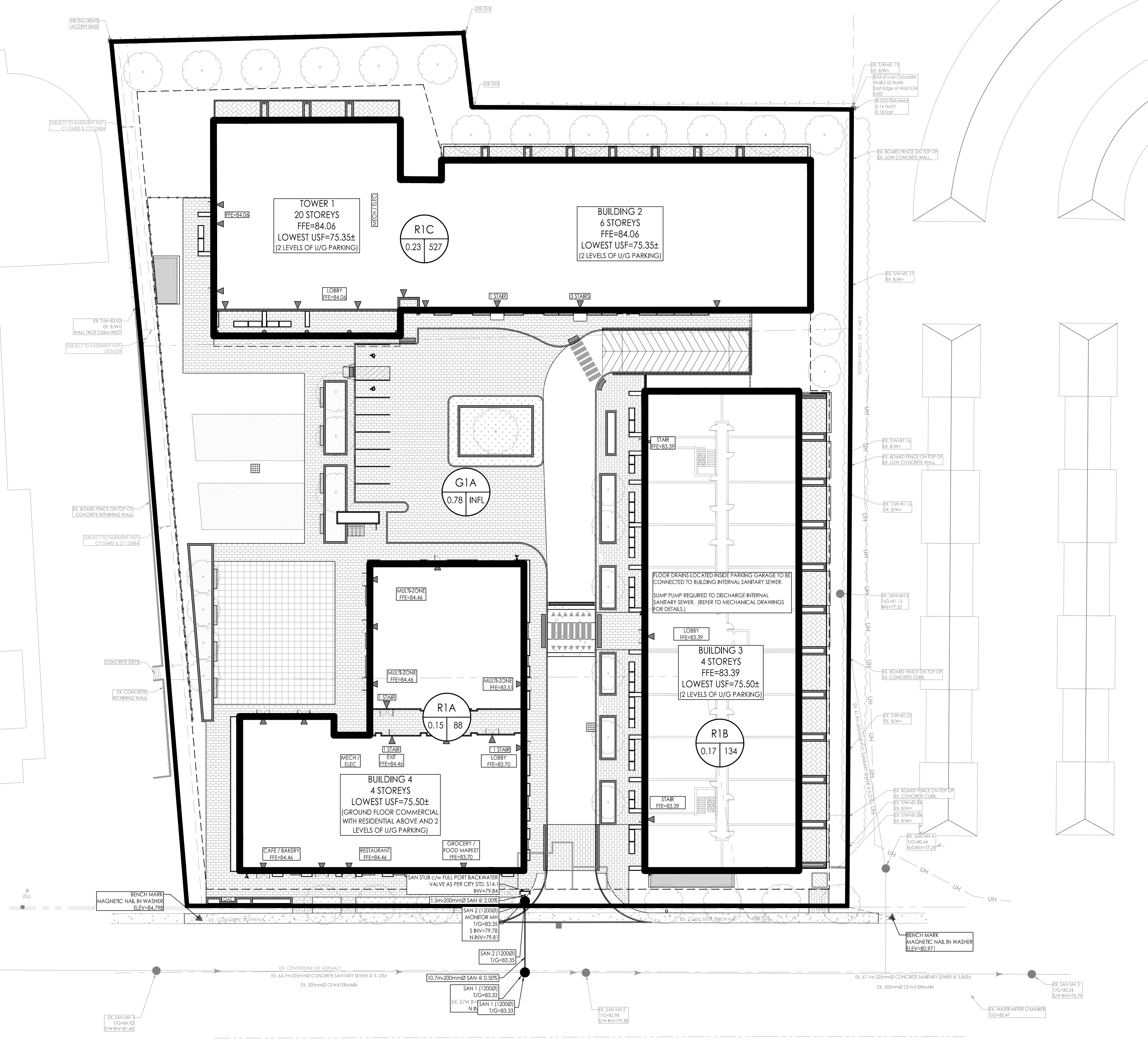
### Permit-Seal

Client/Project  
**BRIGIL HOMES**  
 98 LOUIS STREET  
 GATINEAU, QC  
 J8Y 3R7  
**MOONEY'S BAY**  
 729 RIDGEWOOD AVENUE  
 OTTAWA, ON, CANADA

### Title

**SANITARY DRAINAGE PLAN**

Project No. 160401536	Scale 1:300	Sheet 7 of 7	Revision 3
Drawing No. SA-1	Revision 3		Scale 0 3 9 15m



RIDGEWOOD AVENUE

\\s1\p\proj\160401536\dwg\160401536\_DB.dwg  
2024/07/15 09:54 AM  
2024/07/15 09:54 AM  
ORIGINAL SHEET - ARCH D

D07-12-21-0089