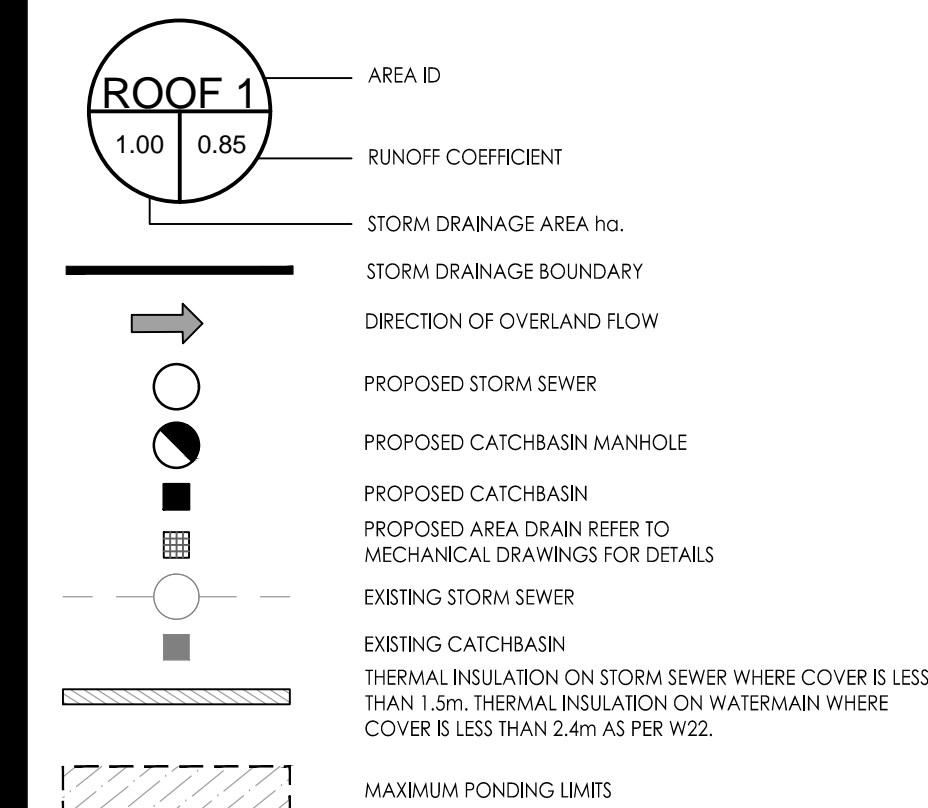


Stantec Consulting Ltd.
400 - 1331 Clyde Avenue
Ottawa ON
Tel. 613.722.4420
www.stantec.com

Copyright Reserved

The Contractor shall verify and be responsible for all dimensions. DO NOT scale the drawing - any errors or omissions shall be reported to Stantec without delay. The Copyrights to all designs and drawings are the property of Stantec. Reproduction or use for any purpose other than that authorized by Stantec is forbidden.

Legend



Notes

- ALL CATCH BASINS AND TRENCH DRAINS TO BE CONNECTED TO INTERNAL PLUMBING AND COLLECTED IN STORM WATER MANAGEMENT CISTERN. INSTALLATION BY OTHERS.
- INTERNAL PLUMBING AND SUMP PUMPS TO BE DESIGNED BY THE MECHANICAL CONSULTANT.
- STORMWATER MANAGEMENT TO BE PROVIDED THROUGH A 50m³ CISTERN LOCATED IN THE UNDERGROUND PARKING.
- MAX. CISTERN RELEASE RATE TO STORM SEWER = 166.2L/s

Revision	By	Appd.	YY.MM.DD
3	MJS	DT	24.01.15
2	MJS	DT	23.03.02
1	MJS	DT	22.07.05
0	MJS	AMP	21.06.09

File Name:	MJS	AMP	MJS	21.06.01
160401536 DB DWG	Dwn.	Chkd.	Dgn.	YY.MM.DD

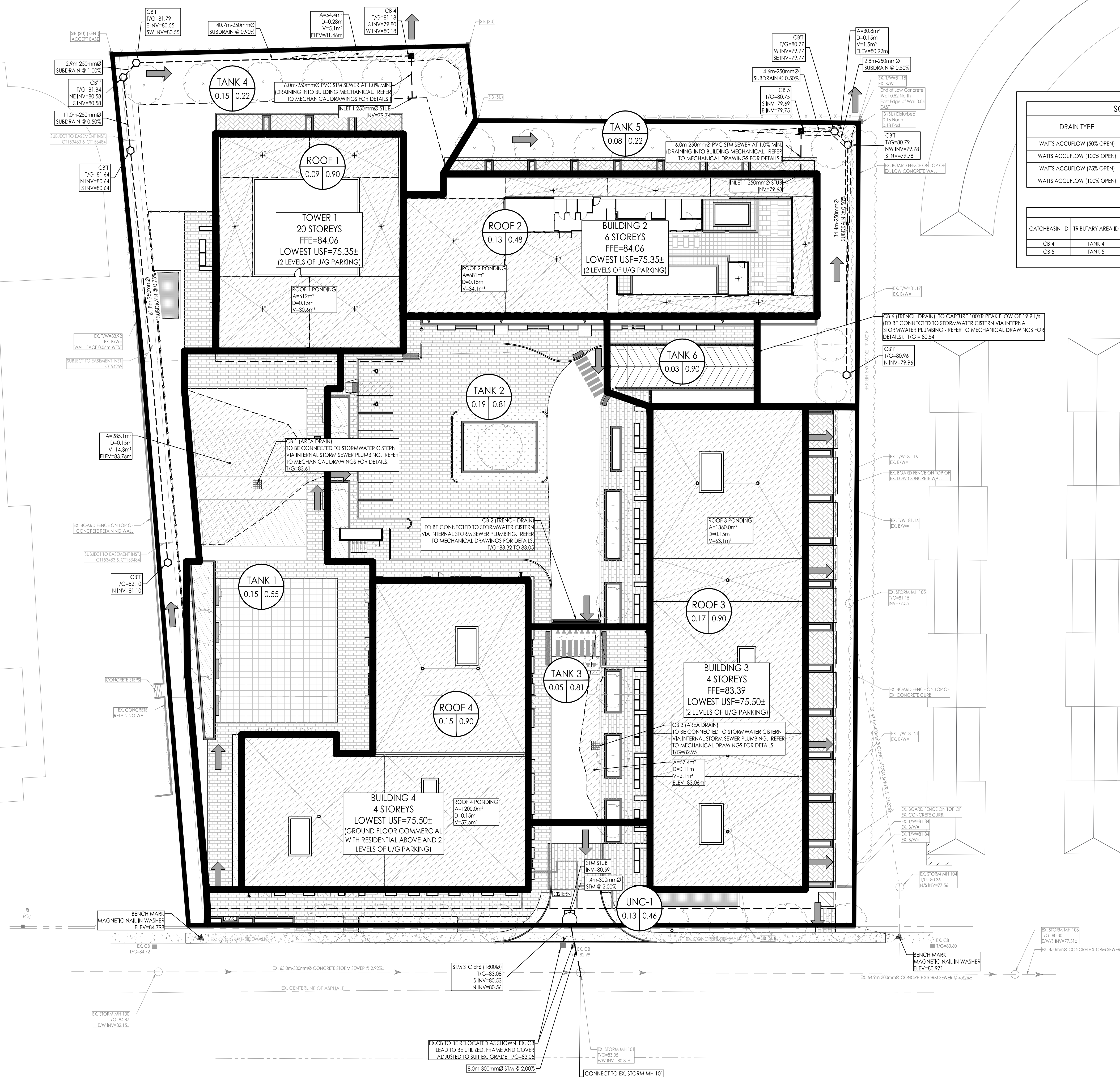
Permit-Seal

Client/Project
BRIGIL HOMES
98 LOUIS STREET
GATINEAU, QC
J8Y 3R7
MOONEY'S BAY
729 RIDGEWOOD AVENUE
OTTAWA, ON, CANADA

Title
STORM DRAINAGE PLAN

Project No. 160401536	Scale 1:300	Sheet 6 of 7	Revision 3
--------------------------	----------------	-----------------	---------------

Drawing No. SD-1
Revision 3
PLAN # 18552



SCHEDULE OF ROOF RELEASE RATES

DRAIN TYPE	TRIBUTARY AREA ID	# OF DRAINS	100YR Head (m)	100YR RELEASE RATE (L/s)
WATTS ACCURFLOW (50% OPEN)	ROOF 1	6	0.138	7.1
WATTS ACCURFLOW (100% OPEN)	ROOF 2	8	0.105	10.6
WATTS ACCURFLOW (75% OPEN)	ROOF 3	6	0.146	9.2
WATTS ACCURFLOW (100% OPEN)	ROOF 4	4	0.148	7.5

ICD TABLE

CATCHBASIN ID	TRIBUTARY AREA ID	ICD TYPE	2YR HEAD (m)	100YR HEAD (m)	2YR FLOW (L/s)	100YR FLOW (L/s)
CB 4	TANK 4	VORTEX LMF 80	1.38	1.66	6.7	7.4
CB 5	TANK 5	VORTEX LMF 80	0.44	1.21	3.8	6.3

\\s1\p01\c01\160401536\160401536 DB DWG.dwg
2024/07/15 09:59 AM P. ZANG