

Stantec Consulting Ltd.
400 - 1331 Clyde Avenue
Ottawa ON
Tel. 613.722.4420
www.stantec.com

Copyright Reserved

The Contractor shall verify and be responsible for all dimensions. DO NOT scale the drawing - any errors or omissions shall be reported to Stantec without delay.
The Copyrights to all designs and drawings are the property of Stantec. Reproduction or use for any purpose other than that authorized by Stantec is forbidden.

Legend

- ORIGINAL GROUND ELEVATION
- PROPOSED ELEVATION
- PROPOSED LOT CORNER ELEVATION EXISTING ELEVATION AT LOT CORNER
- FLOW DIRECTION AND GRADE
- FINISHED FIRST FLOOR ELEVATION
- UNDERSIDE OF FOOTING ELEVATION
- TERRACING 3:1 SLOPE MAXIMUM (UNLESS OTHERWISE SHOWN)
- DIRECTION OF EMERGENCY OVERLAND FLOW
- PROPOSED VALVE BOX
- PROPOSED FIRE HYDRANT
- PROPOSED SANITARY SEWER MANHOLE
- PROPOSED STORM SEWER MANHOLE
- PROPOSED CATCHBASIN MANHOLE
- PROPOSED CATCHBASIN
- PROPOSED AREA DRAIN REFER TO MECHANICAL DRAWINGS FOR DETAILS
- PROPOSED DEPRESSED CURB LOCATION
- PROPOSED BARRIER CURB
- HEAVY DUTY ASPHALT
- OVERLAND SPILL LOCATION
- TWS1 LOCATION AS PER CITY STD
- ROAD CUT AS PER CITY OF OTTAWA STANDARD DETAIL R10
- MAXIMUM PONDING LIMITS

Notes

- SITE PLAN PREPARED BY: NEUF ARCHITECT(E)S, SHEET No A102 PROJECT No 12382, DATED DEC 20, 2023.
- TOPOGRAPHIC SURVEY SUPPLIED BY FAIRHALL, MOFFATT & WOODLAND LTD. PART OF BLOCK C, REGISTERED PLAN 749, PART OF BLOCK C REGISTERED PLAN 775 AND PART OF LOT 23, JUNCTION GORE, TOWNSHIP OF GLOUCESTER, NOW CITY OF OTTAWA.

Revision	By	Appd.	YY.MM.DD	
3	REVISED AS PER CITY COMMENTS	MJS	DT	24.01.15
2	REVISED AS PER CITY COMMENTS	MJS	DT	23.03.02
1	REVISED AS PER CITY COMMENTS	MJS	DT	22.07.05
0	ISSUED FOR SPA	MJS	AMP	21.06.09

File Name:	MJS	AMP	MJS	21.06.01
160401536 DB DWG	Dwn.	Chkd.	Dgn.	YY.MM.DD

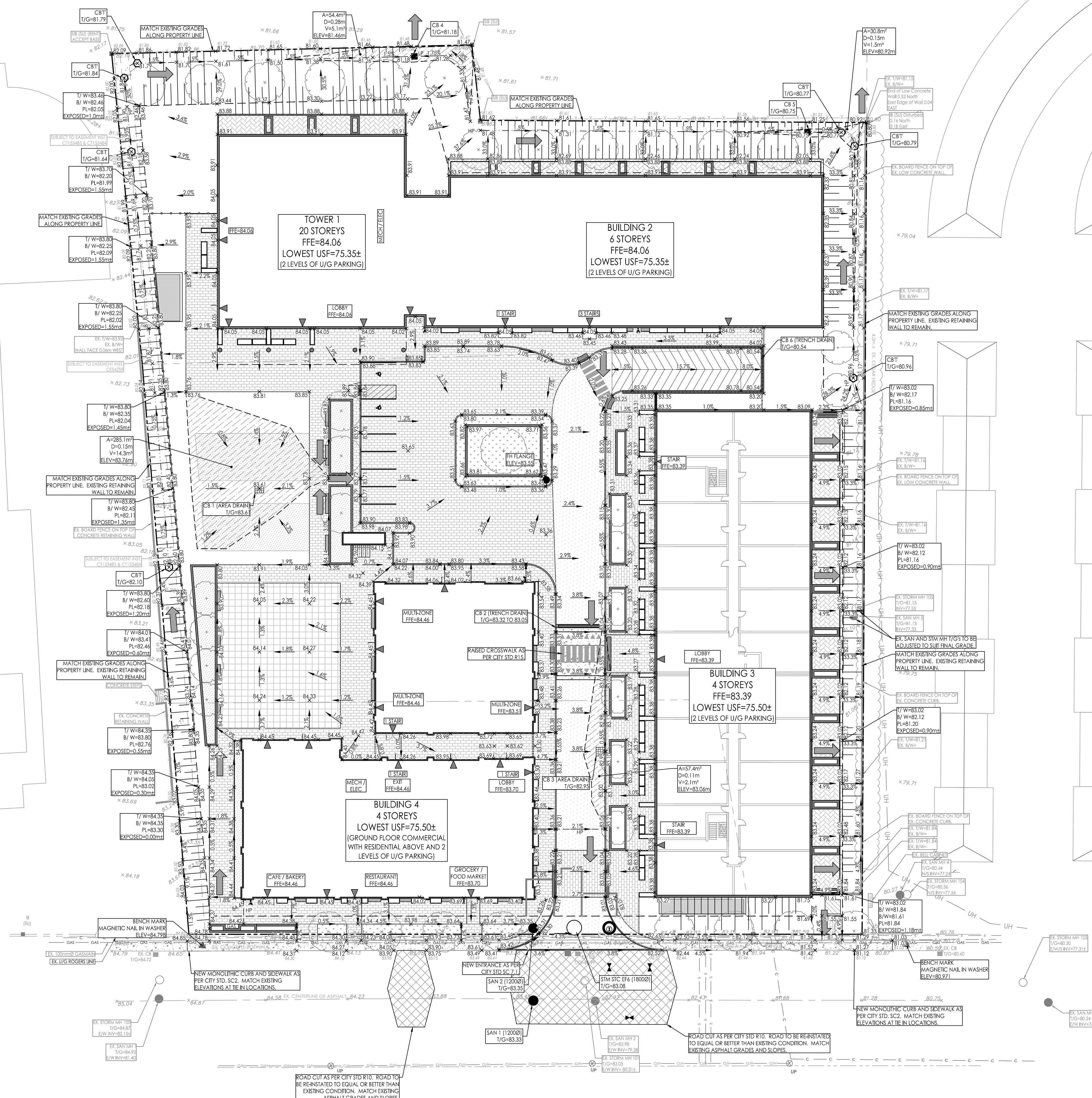
Permit-Seal

Client/Project
BRIGL HOMES
98 LOIS STREET
GATINEAU, QC
J8Y 3R7
MOONEY'S BAY
729 RIDGEWOOD AVENUE
OTTAWA, ON, CANADA

Title

GRADING PLAN

Project No.	Scale	0	3	9	15m
160401536	1:300				
Drawing No.	Sheet	Revision			
GP-1	4 of 7	3			



PAVEMENT STRUCTURE

DRIVEWAYS CAR ONLY PARKING AREAS
50mm WEAR COURSE- HL 3 OR SP 12.5 ASPHALTIC CONCRETE
150mm OPSS GRANULAR 'A' BASE
300mm OPSS GRANULAR 'B' TYPE II

LOCAL ROADWAYS, ACCESS LANES AND HEAVY DUTY USE
40mm SUPERPAVE 12.5 ASPHALTIC CONCRETE
50mm SUPERPAVE 19.0 BINDER COURSE
150 OPSS GRANULAR 'A' BASE
400 OPSS GRANULAR 'B' TYPE II

LOCAL ROADWAYS, ACCESS LANES AND HEAVY DUTY USE (OVER CONCRETE U/G STRUCTURE)
40mm SUPERPAVE 12.5 ASPHALTIC CONCRETE
50mm SUPERPAVE 19.0 BINDER COURSE
200 OPSS GRANULAR 'A' BASE

CAR PARKING AREAS (OVER CONCRETE U/G STRUCTURE)
50mm WEAR COURSE- HL 3 OR SP 12.5 ASPHALTIC CONCRETE
200mm OPSS GRANULAR 'A' BASE

\\s01\proj\160401536\160401536.dwg 2024/01/15 09:58 AM by SP, JMS, MJS