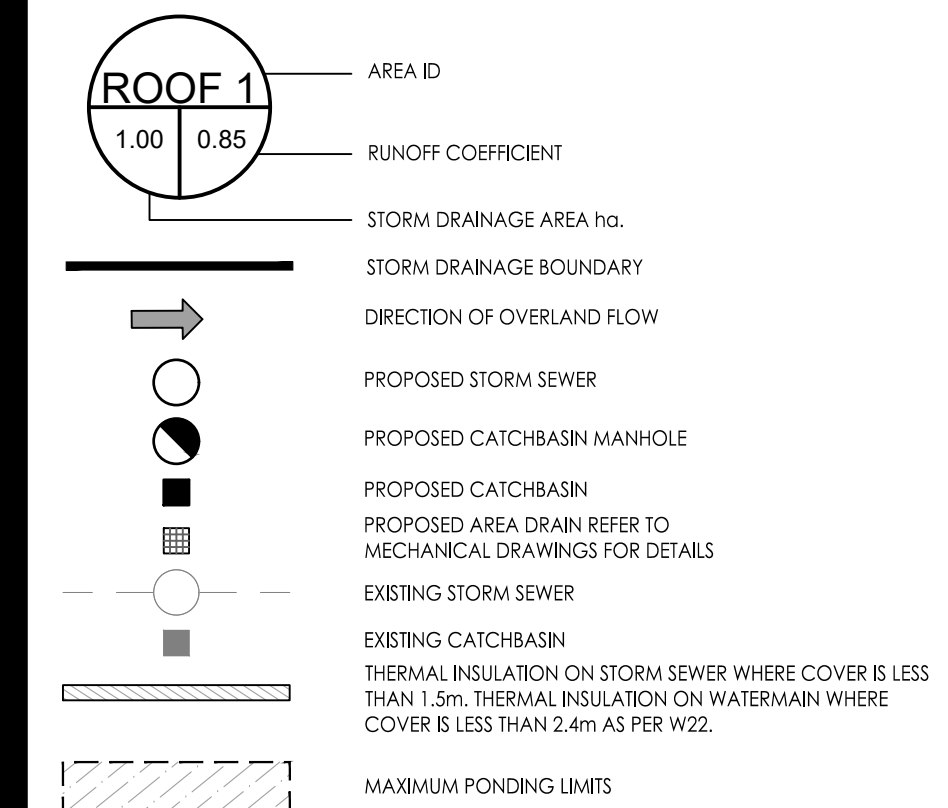


Copyright Reserved

The Contractor shall verify and be responsible for all dimensions. DO NOT scale the drawing - any errors or omissions shall be reported to Stantec without delay.
The Copyrights to all designs and drawings are the property of Stantec. Reproduction or use for any purpose other than that authorized by Stantec is forbidden.

SCHEDULE OF ROOF RELEASE RATES				
DRAIN TYPE	TRIBUTARY AREA ID	# OF DRAINS	100YR Head (m)	100YR RELEASE RATE (L/s)
WATTS ACCUFLOW (50% OPEN)	ROOF 1	4	0.148	5.0
WATTS ACCUFLOW (100% OPEN)	ROOF 2	4	0.117	5.9
WATTS ACCUFLOW (75% OPEN)	ROOF 3	6	0.146	9.2
WATTS ACCUFLOW (100% OPEN)	ROOF 4	4	0.148	7.5

Legend



Notes

- ALL CATCH BASINS AND TRENCH DRAINS TO BE CONNECTED TO INTERNAL PLUMBING AND COLLECTED IN STORM WATER MANAGEMENT CISTERN. INSTALLATION BY OTHERS.
- INTERNAL PLUMBING AND SUMP PUMPS TO BE DESIGNED BY THE MECHANICAL CONSULTANT.
- STORMWATER MANAGEMENT TO BE PROVIDED THROUGH A 40m³ CISTERN LOCATED IN THE UNDERGROUND PARKING.
- MAX. CISTERN RELEASE RATE TO STORM SEWER = 166.2 L/s

Revision	By	Appd.	YY.MM.DD
2	REVISED AS PER CITY COMMENTS	MJS	DT 23.03.02
1	REVISED AS PER CITY COMMENTS	MJS	DT 22.07.05
0	ISSUED FOR SPA	MJS	AMP 21.06.09

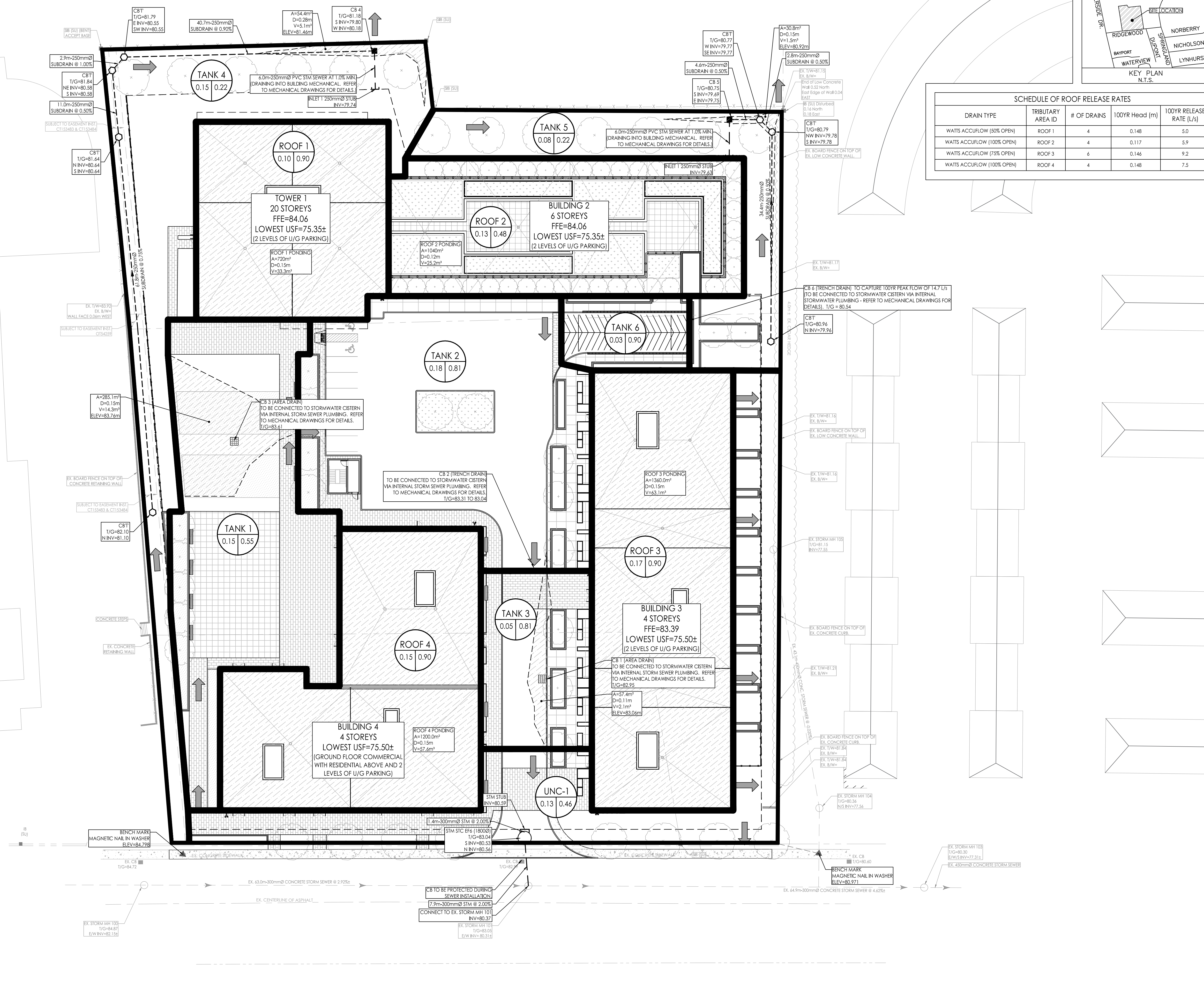
Revision	By	Appd.	YY.MM.DD
2	REVISED AS PER CITY COMMENTS	MJS	DT 23.03.02
1	REVISED AS PER CITY COMMENTS	MJS	DT 22.07.05
0	ISSUED FOR SPA	MJS	AMP 21.06.09

File Name	MJS	AMP	MJS	21.06.01
160401536 DB DWG	Dwn.	Chkd.	Dgn.	YY.MM.DD

Permit-Seal

Client/Project
BRIGIL HOMES
98 LOIS STREET
GATINEAU, QC
J8Y 3R7
MOONEY'S BAY
729 RIDGEWOOD AVENUE
OTTAWA, ON, CANADA

Title
STORM DRAINAGE PLAN



RIDGEWOOD AVENUE