

MATERIALS LEGEND		ABBREVIATION/SYMBOL LEGEND	
C-1 EXPOSED CONCRETE	MT-1 ALUMINUM - TYPE 1 (WHITE - STANDARD SERIES - DURANAR XL RL 9016)	C.J. CONTROL JOINT (SEALANT COLOUR TO MATCH ADJACENT VENEER)	L.L. PRIMED & PAINTED LOOSE LINTEL (COLOUR TO MATCH ADJACENT VENEER)
G-1 GLASS - TYPE 1 (CLEAR)	MT-2 ALUMINUM - PERFORATED LOUVRE COVERS	S.A. - PRIMED AND PAINTED SHELF ANGLE (COLOUR TO MATCH ADJACENT VENEER)	S.S. - PRIMED & PAINTED SUSPENDED SHELF ANGLE (COLOUR TO MATCH ADJACENT VENEER)
G-2 SPANDREL GLASS - TYPE 2 (WARM GRAY FRIT CS-00001)	MT-3 ALUMINUM - EQUITONE RIBBED (LINEA) LT 60	S.S. - SUPPORT STRUCTURE (OPENINGS OVER 3000mm): STRUCTURAL STEEL HSS AND SHELF ANGLE ABOVE WINDOW UNIT; SEE STRUCTURAL ENGINEER FOR TYPES, SPACING, DIMENSIONS, ANCHORAGE, LOCATIONS, ETC.	
G-3 PRIVACY SCREENS - PINHEAD TEXTURED	MT-4 ALUMINUM - EQUITONE RIBBED (LINEA) LT 90 CHALK		
M-1 MASONRY VENEER - TYPE 1 (STONE: SHOULDICE, COLOUR: PEARL WHITE - TAPESTRY (NO BEVEL) 390x190x90mm SEE STONE COURSING)	MT-5 ALUMINUM FLASHING	□ SINGLE EXHAUST VENT *	□ DOUBLE EXHAUST VENT *
M-2 MASONRY VENEER - TYPE 3 (BRICK: SHOULDICE - MJ BRICK SMOOTH, COLOUR: PEARL WHITE, JUMBO METRIC 290x90x90mm)	MT-6 PERFORATED METAL PANEL	□ TRIPLE EXHAUST VENT *	□ QUADRUPLE EXHAUST VENT *
M-3 MASONRY VENEER - TYPE 3	R-1 METAL RAILING - PICKET (BLACK)	* ALL EXHAUST VENT LOCATION TO BE VERIFIED AND COORDINATED WITH MECHANICAL ENGINEER	
M-4 CONCRETE PANEL	R-2 METAL RAILING - PICKET (WHITE)	<b>REFER TO A-XXX FOR BRICK COURSING DETAILS. FOR OTHER BRICK SIZES AND TYPES, COURSING MUST BE ADAPTED TO THE STONE COURSING AND ROUGH OPENINGS AS INDICATED IN THESE DRAWINGS.</b>	

**MATERIAL LEGEND**

ELEVATION LEGEND	
	CONSTRUCTION NOTES
	DEMOLITION NOTES
	NOTES ON EXISTING
	WINDOW SYMBOL (REFER TO WINDOW SCHEDULE)
	CURTAIN WALL SYMBOL (REFER TO WINDOW SCHEDULE)
	EXPOSED BUILDING FACE SURFACE TO BE PROTECTED, 1HR FRR

**NOTES GÉNÉRALES / General Notes**

- Ces documents d'architecture sont la propriété exclusive de NEUF architecte et ne peuvent être utilisés, reproduits ou copiés sans autorisation écrite préalable. / These architectural documents are the exclusive property of NEUF architecte and cannot be used, copied or reproduced without written pre-authorization.
- Les dimensions apparaissant sur ces documents doivent être vérifiées par l'entrepreneur avant le début des travaux. / All dimensions which appear on the documents must be verified by the contractor before to start the work.
- Veuillez aviser l'architecte de toute dimension erreur et/ou divergence entre ces documents et ceux des autres professionnels. / The architect must be notified of all errors, omissions and discrepancies between these documents and those of the others professionals.
- Les dimensions sur ces documents doivent être lues et non mesurées. / The dimensions on these documents must be read and not measured.

PLANNIFICATEUR / Planner:  
**FOTENN Planning and Urban design**  
 380 Cooper Street, Ottawa, ON, K2P 2H7  
 T 613 730 5709 www.fotenn.com

ARCHITECTURE DE PAYSAGE / Landscape Architect  
**LEVSTEK CONSULTANTS Inc**  
 5871, High Crescent, Ottawa, ON K0A 2W0  
 T 613 626 0518 www.lanocolevstek.com

MÉCANIQUE / ÉLECTRIQUE / Mechanical / Electrical  
**BPA**  
 1900 Robertson Rd, Nepean, ON K2H 5B9  
 T 613 595 6524 bpa.ca

CIVIL / Civil  
**STANTEC**  
 1331 Clyde Ave, #300, Ottawa, ON, K2C 3G4  
 613 722 4420 stanec.com

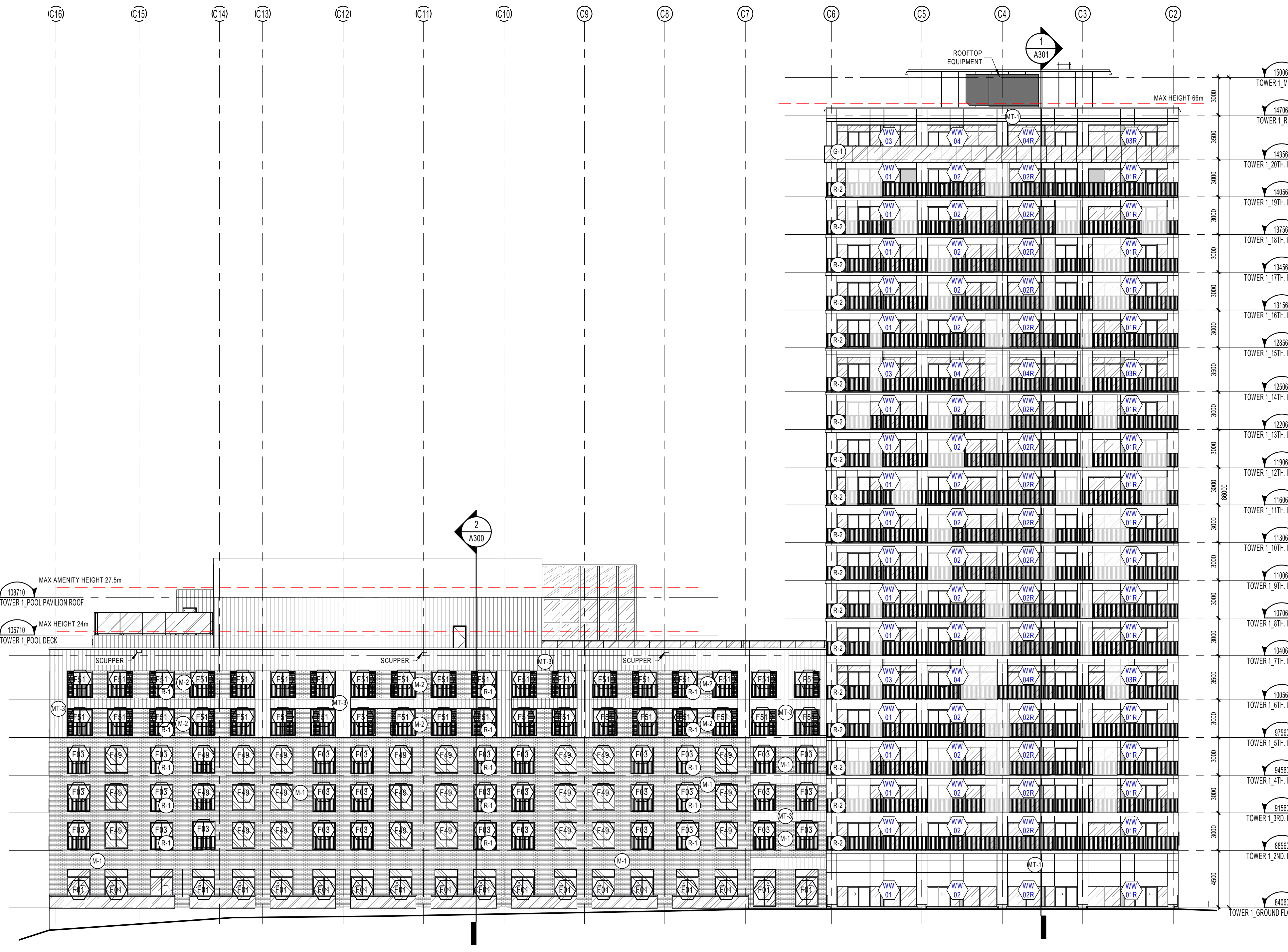
ARCHITECTES / Architect  
**NEUF architect(e)s**  
 630, boul. René-Lévesque O, 32e étage, Montréal QC H3B 1S6  
 T 514 847 1117 NEUFarchitectes.com

GÉOTECHNIQUE / Geotechnical  
**PATERSON GROUP**  
 154 Colonnade Rd S, Nepean, ON, K2E 7J5  
 T 613 228 7381 www.me-eng.com

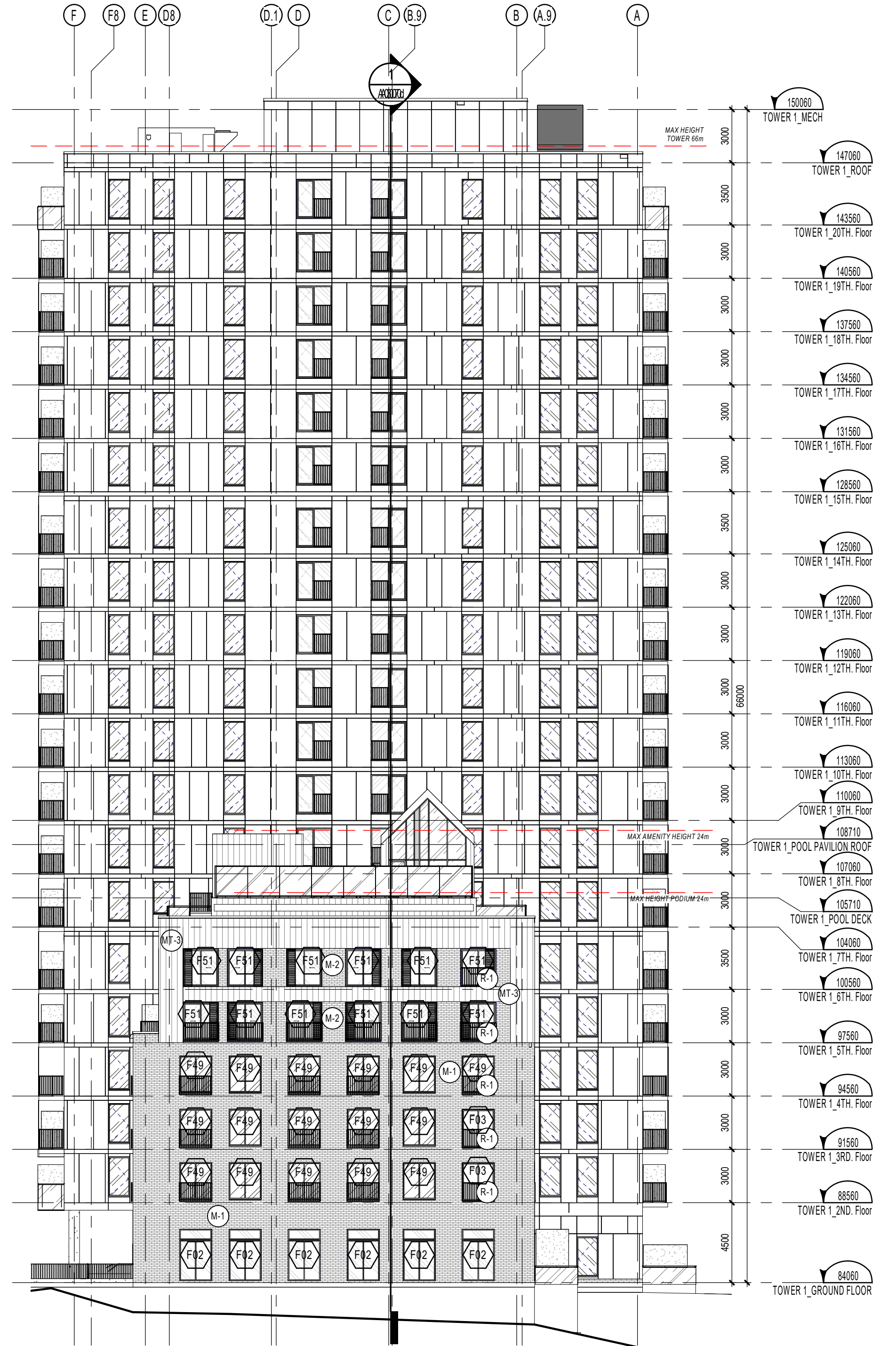
STRUCTURE / Structural  
**L2C Experts**  
 4710 St-Amable St, Suite 103 Montréal QC, H4C 2C7  
 T 514 379 4999 l2cexperts.com

ENVIRONNEMENT / Environmental (ESA)  
**ALTANERGY Groupe**  
 300 Rue Saint-Paul Suite 412, Québec, QC, G1K 7R1  
 T 418 803 7398 altanergy.com

SÉAU / Seal



**NORTH ELEVATION**  
 1 : 200



**EAST ELEVATION - PODIUM & POOL**  
 1 : 200



CLIENT / Client  
**MOONEY'S BAY TOWER 1**  
 729 Ridgewood Ave, Ottawa, ON

NO.	REVISION	DATE (aa-mm-ii)
A	Issued for Coordination	2023-04-24
B	Issued for 30%	2023-04-30
C	Internal Review - Architect	2023-07-05
D	Issued for 30% Rev. 1	2023-10-16
E	Issued for SPA Application	2024-01-29

DESSIN PAR / Drawn by  
**A.M.**  
 DATE (aa-mm-ii)  
**JUNE 2023**  
 TITRE DU DESSIN / Drawing Title  
**ELEVATIONS**

VÉRIFIÉ PAR / Checked by  
**A.J.**  
 ÉCHELLE / Scale  
**As indicated**

REVISION / Revision  
**E**  
 NO. DESSIN / Dwg Number  
**A400**