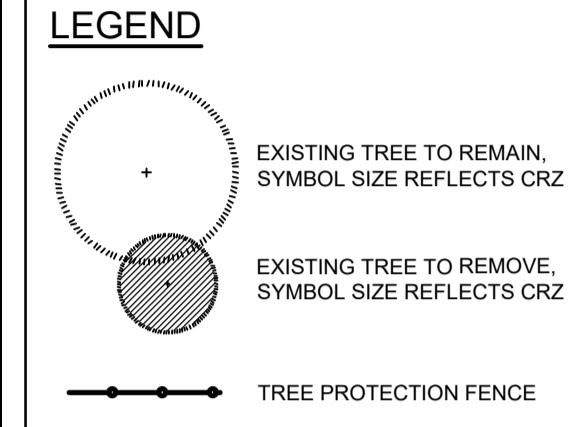
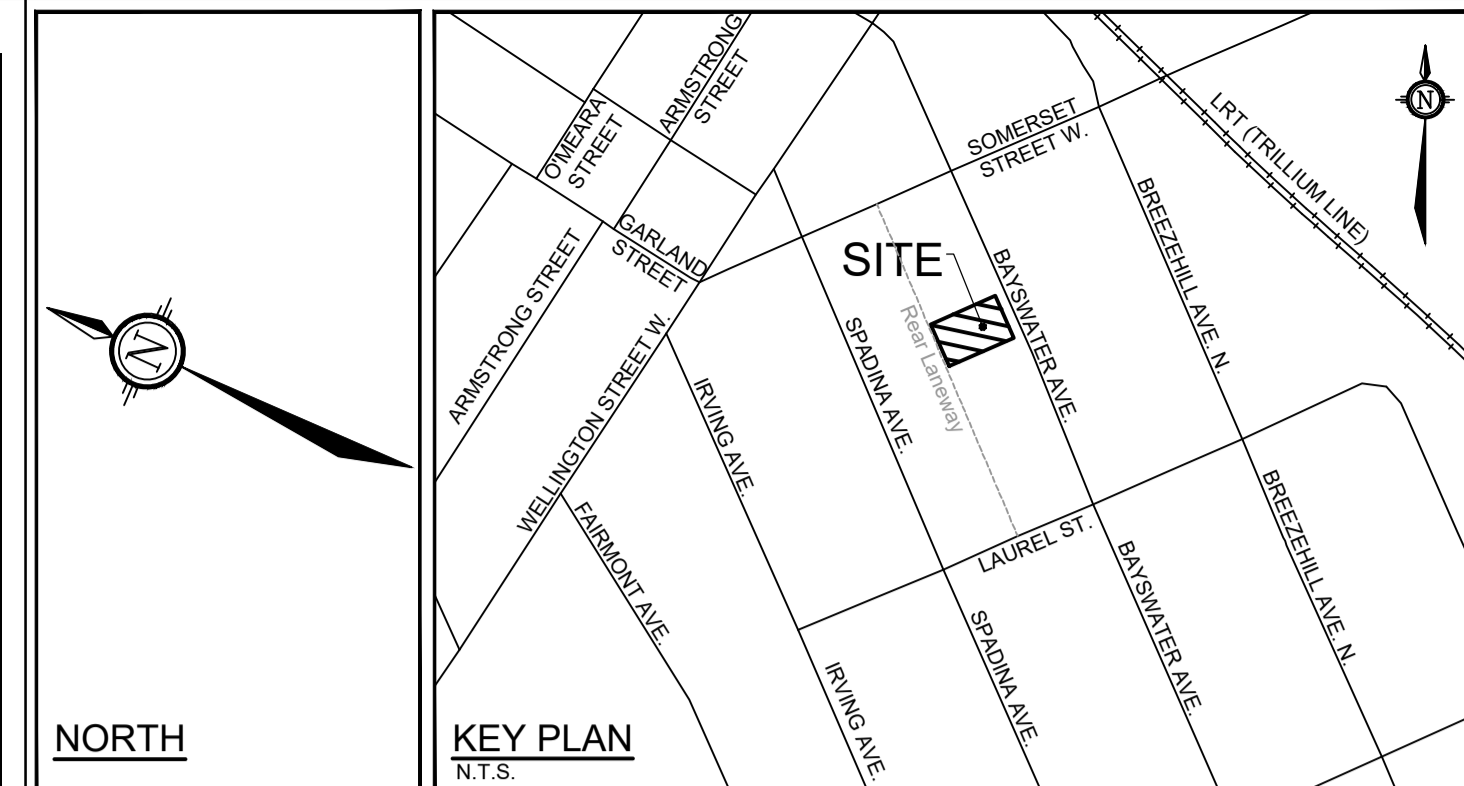


Legend	Conflict	Remove due to conflict with construction.
G Good	Remove	Remove due to tree health or invasive status.
F Fair	PROTECT	Protect trees as per contract details and specifications.
P Poor		

**EXISTING TREE INVENTORY (as of May 19, 2021)**

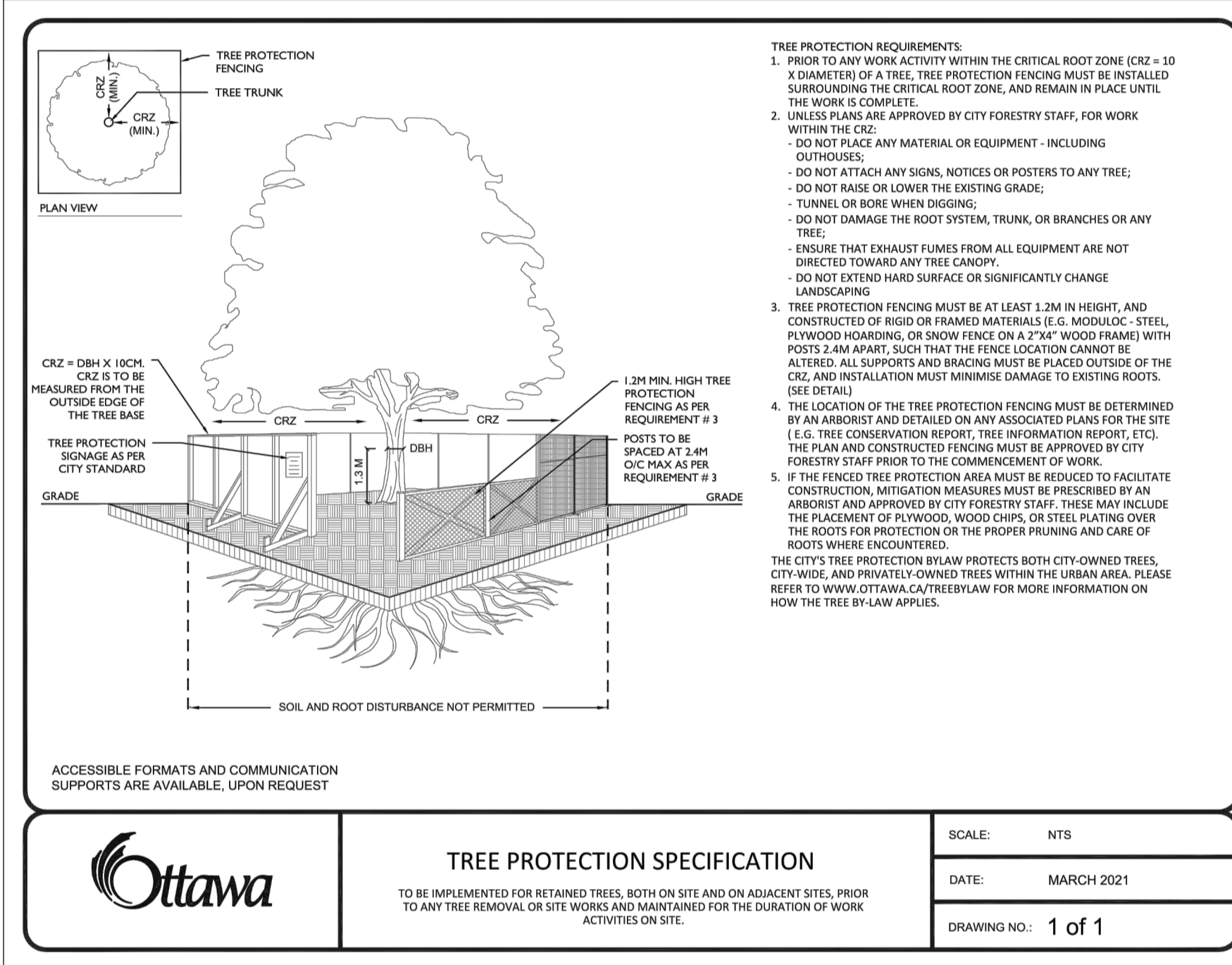
No.	Botanical Name	Common Name	DBH (cm)	CRZ (m)	Condition	Owner	Remarks	Recomm.
1	Ulmus pumila	Siberian Elm	10.0	1.00	Poor	City	Trunk has grown through chain link fence. Weak, thin crown.	Remove
2	Acer rubrum	Red Maple	69.0	6.90	Good	City	Large gap in the middle of the crown due to Hydro pruning; otherwise dense crown. Trunks splits with a narrow union and a seam in the bark that runs down opposite sides. Vigorous and showing signs of strong growth.	Protect
3	Abies balsamea	Balsam Fir	21.0	2.10	Good	Private	Codominant leaders at 5m Ht. with a weak/narrow union. Long seam running down the trunk. Vigorous.	Conflict
4	Acer platanoides	Norway Maple	10.0	1.00	Good	Private	Vigorous. Growing fast, stretching for light.	Conflict
5	Pyrus sp.	Pear	17.0	1.70	Good	Private	Severely pruned. Vigorous.	Conflict
6	Malus sp.	Apple	18.0	1.80	Good	Private	Severely pruned. Vigorous.	Conflict
7	Acer negundo	Manitoba Maple	13.0	1.30	Fair	Private	Volunteer in a gap between fence and garage.	Conflict
8	Acer negundo	Manitoba Maple	23.0	2.30	Fair	Private		Conflict
9	Acer negundo	Manitoba Maple	17.0	1.70	Fair	Private		Conflict
10	Acer negundo	Manitoba Maple	13.0	1.30	Fair	Private		Conflict
11	Acer negundo	Manitoba Maple	18.0	1.80	Fair	Private		Conflict
12	Acer negundo	Manitoba Maple	36.0	3.60	Good	Private	Codominant trunks at 18cm and 12cm DBH. Weak, narrow union.	Conflict
13	Acer negundo	Manitoba Maple	12.0	1.20	Fair	Private		Conflict
14	Acer negundo	Manitoba Maple	16.0	1.60	Fair	Private		Conflict
15	Acer negundo	Manitoba Maple	14.0	1.40	Fair	Private		Conflict
16	Acer negundo	Manitoba Maple	12.0	1.20	Fair	Private	Bowed trunk.	Conflict
17	Acer negundo	Manitoba Maple	16.0	1.60	Fair	Private	Severe sweep at base of trunk.	Conflict
18	Acer negundo	Manitoba Maple	19.0	1.90	Fair	Private	Severe crook at 2m Ht as trunk heads over parking area.	Conflict
19	Acer negundo	Manitoba Maple	29.0	2.90	Good	Private	Codominant limbs at 2m Ht. Strong competitor.	Conflict
20	Acer negundo	Manitoba Maple	23.0	2.30	Good	Private	Leaning over parking. Strong competitor.	Conflict
21	Acer negundo	Manitoba Maple	14.0	1.40	Good	Private	Leaning over parking. Strong competitor.	Conflict
22	Acer negundo	Manitoba Maple	20.0	2.00	Fair	Private	Severe lean over parking.	Conflict
23	Acer negundo	Manitoba Maple	11.0	1.10	Fair	Private	Severe lean over parking.	Conflict
24	Acer negundo	Manitoba Maple	13.0	1.30	Fair	Private	Severe lean over parking.	Conflict



**TREE PROTECTION**

Implement the following protection measures for retained trees, both on site and on adjacent sites, prior to any work activity, including tree removal. Maintain tree protection fence in place and in good condition for the duration of site works:

- The Landscape Architect or Certified Arborist is to determine the location of the tree protection fencing and detail it on any associated plans for the site (e.g. tree conservation report, tree disclosure report, etc.).
- Under the guidance of a Landscape Architect or Certified Arborist, erect a fence at the critical root zone (CRZ) of trees. Diameter at breast height (DBH) is the trunk diameter measured at 1.3m height on the tree trunk. The CRZ is calculated as DBH x 10. Refer to the Tree Protection Fence detail.
- Refer to the Tree Protection Plan for fence location. City Forestry Staff are to approve both the plan and the installed fence prior to work commencement.
- Do not place any material or equipment within 2m of the CRZ of any tree, including outhouses.
- Do not attach any signs, notices, or posters to any tree.
- Do not disturb, raise, or lower the existing grade within the CRZ without approval.
- Only tunnel or bore when digging within the CRZ of a tree. Hand work only where required within the CRZ, absolutely no machinery permitted.
- Do not damage the root system, trunk, or branches, or any tree.
- Do not extend hard surface or significantly change landscaping.
- Ensure that exhaust fumes from all equipment are directed away from any tree canopy.
- When trees marked for removal overlap with the CRZ of trees marked for preservation: cut roots at the edge of the CRZ and grind down stumps after tree removals, do not pull out stumps. Ensure there is no root pulling or disturbance of the ground within the CRZ.
- Prior to work taking place, notify and consult the Landscape Architect and City Forestry Staff if roots must be cut. Roots 20mm or larger should be cut at right angles with clean, sharp horticultural tools without tearing, crushing, or pulling. Refer to City of Ottawa Specification S.P. F-8011 Tree Protection, Excavation of Root Zone.
- If damaged or objectionable branches are observed, consult the Landscape Architect, before any work is conducted. Do not prune leaders. Do not prune more than 1/4 of crown.
- Set up a water and fertilizing program, if trees are being affected by site works, to the satisfaction of the Landscape Architect.
- The Landscape Architect is to prescribe mitigation measures if the protected fenced area must be reduced to facilitate construction. Measures may include the placement of plywood, wood chips, or steel plating over the roots for protection. City Forestry Staff are to approve said measures prior to fence movement.
- City of Ottawa By-law: Protects municipal trees and municipal natural areas in the City of Ottawa and trees on private property in the urban area of the City of Ottawa (2020-340).



**Ottawa**

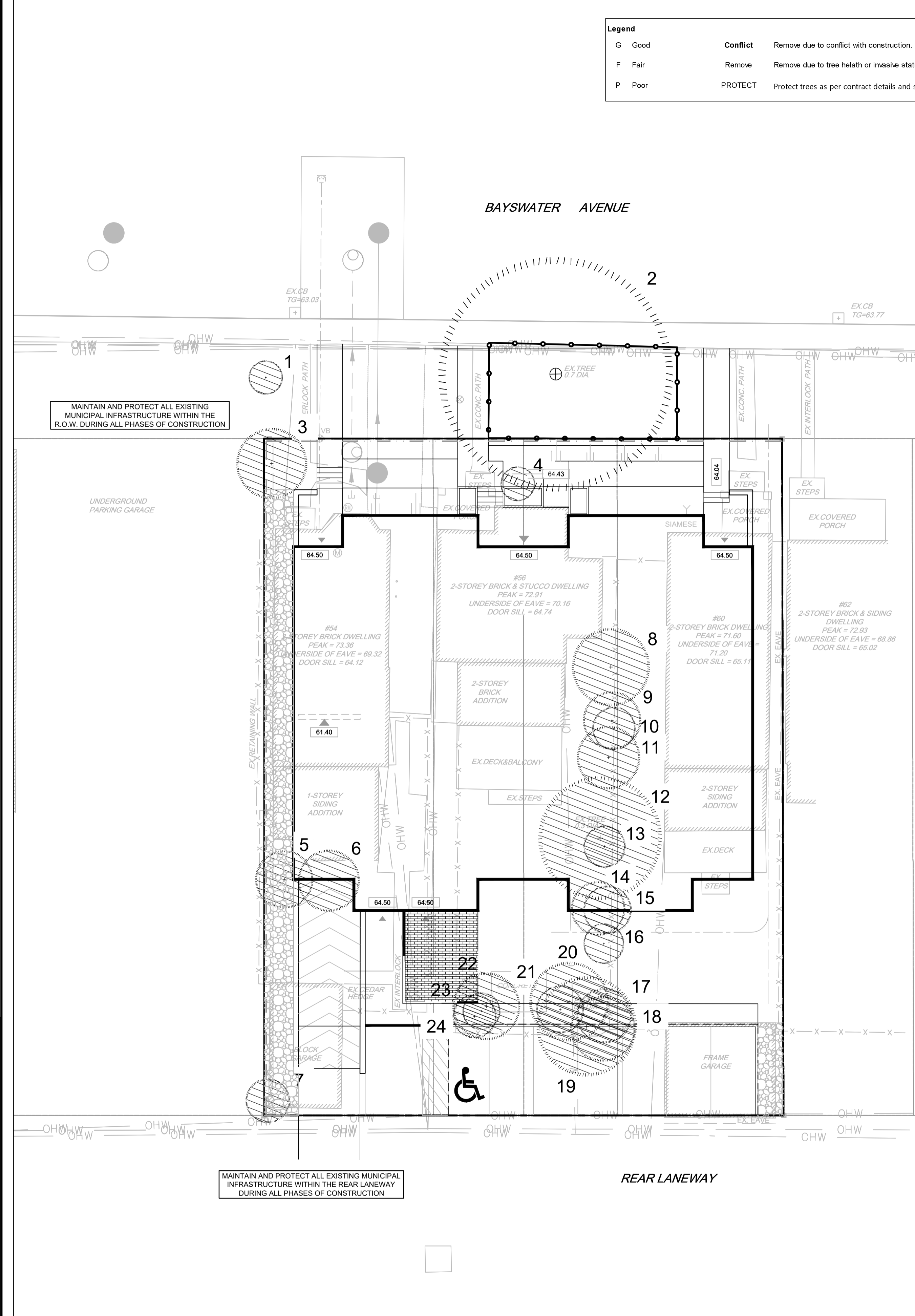
**TREE PROTECTION SPECIFICATION**

TO BE IMPLEMENTED FOR RETAINED TREES, BOTH ON SITE AND ON ADJACENT SITES, PRIOR TO ANY TREE REMOVAL OR SITE WORKS AND MAINTAINED FOR THE DURATION OF WORK ACTIVITIES ON SITE.

SCALE: NTS

DATE: MARCH 2021

DRAWING NO.: 1 of 1

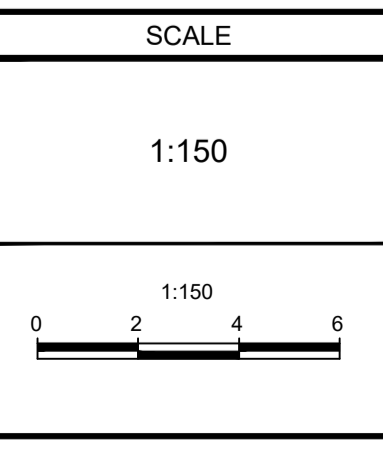


NOTE: THE POSITION OF ALL POLE LINES, CONDUITS, WATERMANS, SEWERS AND OTHER UNDERGROUND AND OVERGROUND UTILITIES AND STRUCTURES IS NOT NECESSARILY SHOWN ON THE CONTRACT DRAWINGS, AND WHERE SHOWN, THE ACCURACY OF THE POSITION OF SUCH UTILITIES AND STRUCTURES IS NOT GUARANTEED. BEFORE STARTING WORK, DETERMINE THE EXACT LOCATION OF ALL SUCH UTILITIES AND STRUCTURES AND ASSUME ALL LIABILITY FOR DAMAGE TO THEM.

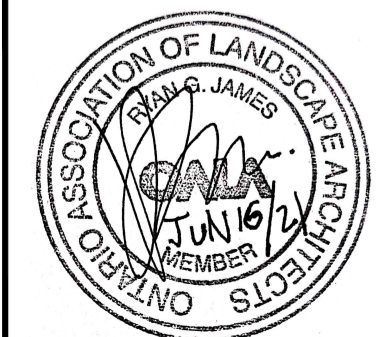
**OWNER INFORMATION**  
 Centennial Developments Corporation  
 35 Kenilworth Avenue  
 Ottawa, Ontario, K1Y 3X9  
 Contact: Blair Hulaj  
 Phone: 613-979-1135  
 email: blair@centennialdev.com

**NOT FOR CONSTRUCTION**

No.	REVISION	DATE	BY
1	ISSUED FOR SITE PLAN APPROVAL	JUNE 16/21	RJ



DESIGN		FOR REVIEW ONLY	
CHECKED	KM		
DRAWN	RJ		
CHECKED	KM		
APPROVED	RJ		



**NOVATECH**  
 Engineers, Planners & Landscape Architects  
 Suite 200, 240 Michael Cowpland Drive  
 Ottawa, Ontario, Canada K2M 1P6  
 Telephone: (613) 254-9643  
 Facsimile: (613) 254-5867  
 Website: www.novatech-eng.com

LOCATION		PROJECT No.	
CITY OF OTTAWA 54, 56 & 60 BAYSWATER AVENUE		120169	
DRAWING NAME		REV # 1	
TREE CONSERVATION REPORT		120169-TCR	