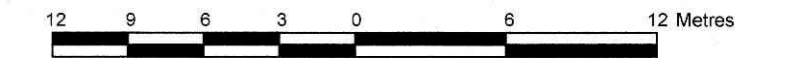


**PLAN OF SURVEY OF  
LOTS 230 TO 251 (BOTH INCLUSIVE)  
AND PART OF CAVAN STREET  
AND PART OF LARKIN STREET  
(Closed by Judge's Order Inst. CR394977)  
AND PART OF THE LANE  
(Closed by Judge's Order Inst. CR404252)  
REGISTERED PLAN 327  
CITY OF OTTAWA**

Surveyed by Annis, O'Sullivan, Vollebek Ltd.

Scale 1 : 300



**Metric**  
DISTANCES SHOWN ON THIS PLAN ARE IN METRES AND  
CAN BE CONVERTED TO FEET BY DIVIDING BY 0.3048

**Surveyor's Certificate**

- I CERTIFY THAT:
- This survey and plan are correct and in accordance with the Survey Act, the Surveyors Act and the Land Titles Act and the regulations made under them.
  - The survey was completed on the 12th day of February, 2021.

Feb. 21, 2021  
Date  
E. H. Herweyer  
Ontario Land Surveyor

**Notes & Legend**

Denotes	Survey Monument Planted	□ CB	Catch Basin
—	Survey Monument Found	TVG	Top of Grate
SIB	Standard Iron Bar	□ GM	Gas Meter
SSIB	Short Standard Iron Bar	□ HM	Hydro Meter
*	Survey Monument 0.3 Long	□ TB-C	Cable Terminal Box
CP	Concrete Pin	□ TB-H	Hydro Terminal Box
(WIT)	Witness	○ B	Bollard
Mess.	Measured	△ S	Sign
(AOG)	Annis, O'Sullivan, Vollebek Ltd.	CLF	Chain Link Fence
(P1)	Registered Plan 327	BF	Board Fence
(P2)	(1473) Plan dated January 11, 1996	HR	Handrail
(D1)	Inst. N633820	RWC	Concrete Retaining Wall
○	Deciduous Tree	○ UP	Utility Pole
○ FH	Fire Hydrant	○ AN	Anchor
○ MH-ST	Maintenance Hole (Storm Sewer)	HTB	Hydro Transformer Bot
○ MH-S	Maintenance Hole (Sanitary)	○ LS	Light Standard
— ST	Underground Storm Sewer	□ MB	Mail Box
— S	Underground Sanitary Sewer	○	Diameter
— W	Underground Water	○	Location of Elevations
— G	Underground Gas	Elev	Elevation
— R	Underground Rogers	C/L	Centreline
— OHW	Overhead Wires		

Bearings are grid, derived from Can-Net 2016 Real Time Network GPS observations and are referred to the Central Meridian of MTM Zone 9 (76°30' West Longitude) NAD-83 (original).

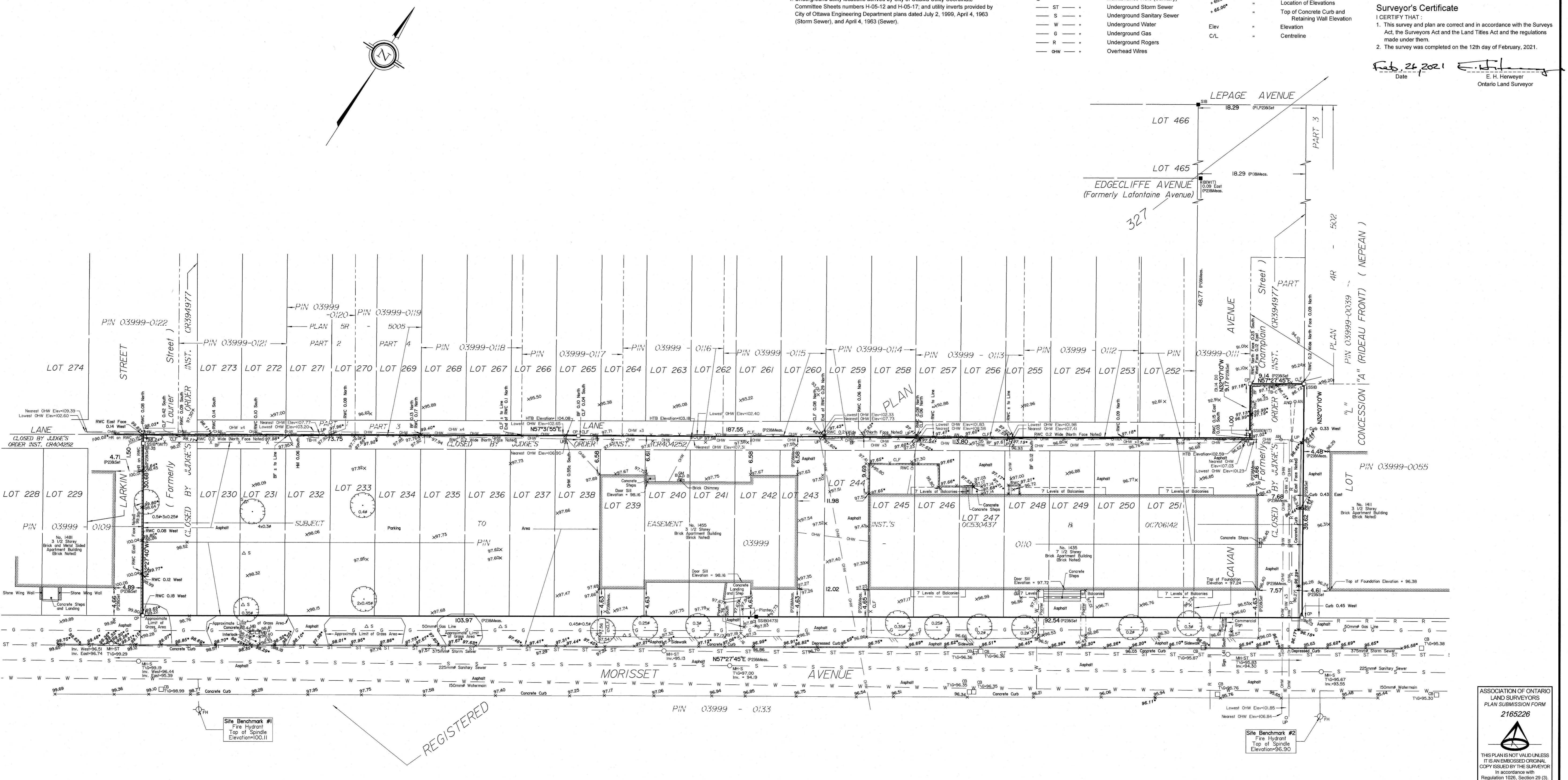
For comparison purposes, a rotation of 0°30'50" counter-clockwise was applied to bearings on P2.

**ELEVATION NOTES**

- Elevations shown are geodetic and are referred to the CGVD28 geodetic datum, derived from City of Ottawa Benchmark No. N-29, having an elevation of 77.347.
- It is the responsibility of the user of this information to verify that the job benchmark has not been altered or disturbed and that its relative elevation and description agrees with the information shown on this drawing.

**UTILITY NOTES**

- This drawing cannot be accepted as acknowledging all of the utilities and it will be the responsibility of the user to contact the respective utility authorities for confirmation.
- Only visible surface utilities were located.
- A field location of underground plant by the pertinent utility authority is mandatory before any work involving breaking ground, probing, excavating etc.
- Underground utility locations derived by City of Ottawa Utility Coordinate Committee Sheets numbers H-05-12 and H-05-17; and utility inverts provided by City of Ottawa Engineering Department plans dated July 2, 1999, April 4, 1993 (Storm Sewer), and April 4, 1993 (Sewer).



ASSOCIATION OF ONTARIO  
LAND SURVEYORS  
PLAN SUBMISSION FORM  
2165226

THIS PLAN IS NOT VALID UNLESS  
IT IS AN EMBOSSED ORIGINAL  
COPY ISSUED BY THE SURVEYOR  
In accordance with  
Regulation 1026, Section 29 (3).

© Annis, O'Sullivan, Vollebek Ltd. 2021. "THIS PLAN IS PROTECTED BY COPYRIGHT"

**ANNIS, O'SULLIVAN, VOLLEBEK LTD.**  
14 Concourse Gate, Suite 500  
Nepean, Ont. K2E 7S6  
Phone: (613) 727-0850 / Fax: (613) 727-1079  
Email: info@anniso.com

Ontario  
Land Surveyors (Lic. No. 2193-21 Firm, Capital Lic. 230-25- P-327 T. D.)