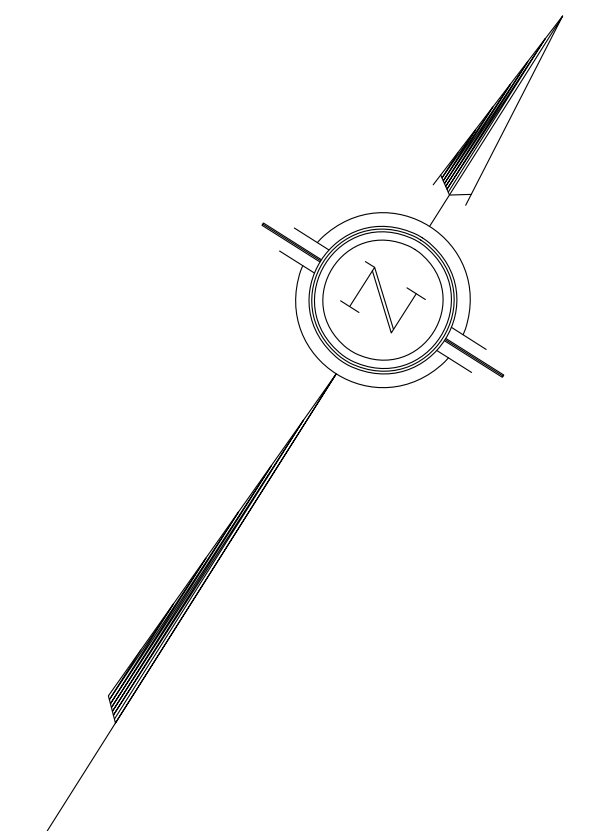


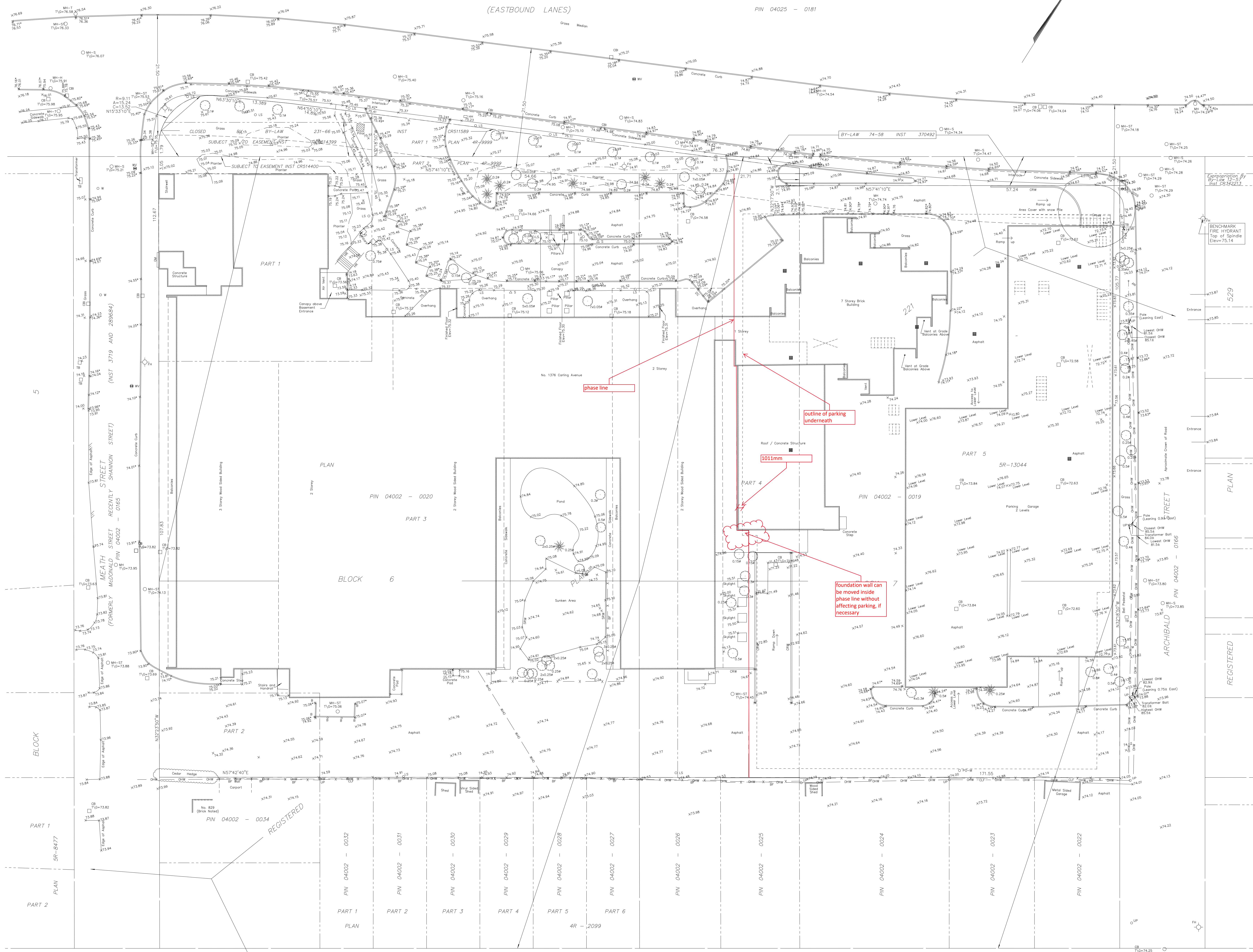
Prepared by Annis, O'Sullivan, Vollebek Ltd.

Road Allowance Between Concession 1 (Ottawa Front) and Concession A (Rideau Front) (Nepean) (as Widened)  
Known as CARLING AVENUE REGIONAL ROAD No. 38 (Formerly Known as Manotick Street) MTC PLAN P-3409-52, INST 609158  
(EASTBOUND LANES) PIN 04025 - 0181



Scale 1:250  
0 5 10 20 30 40 50 Metres

Metric  
DISTANCES SHOWN ON THIS PLAN ARE IN METRES AND  
CAN BE CONVERTED TO FEET BY DIVIDING BY 0.3048



Date: E.H. Henweyer O.L.S.

Notes & Legend

- Denotes
- Deciduous Tree
- Coniferous Tree
- Fire Hydrant
- Water Valve
- Maintenance Hole (Storm Sewer)
- Maintenance Hole (Sanitary)
- Maintenance Hole (Bell Telephone)
- Maintenance Hole (Traffic)
- Maintenance Hole (Hydro)
- Maintenance Hole (Gas)
- Maintenance Hole (Unidentified)
- Valve Chamber (Watermain)
- Overhead Wires
- Catch Basin
- Ditch Inlet
- Gas Valve
- Gas Meter
- Hydro Meter
- Handhole
- Ball Terminal Box
- Cable Terminal Box
- Traffic Terminal Box
- Unidentified Terminal Box
- Bollard
- Sign
- Chain Link Fence
- Board Fence
- Stone Retaining Wall
- Concrete Retaining Wall
- Depressed Curb
- Utility Pole
- Wooden Pole
- Anchor
- Light Standard
- Diameter
- Location of Elevations
- Top of Concrete Curb Elevation
- Centreline
- Property Line

Bearings are grid bearings and are referred to the Central Meridian of NAD 83 Zone 18 (79°30' West Longitude) NAD-83 (original).

SITE AREA = 18861 m<sup>2</sup>

BOUNDARY INFORMATION COMPILED FROM PLAN SR-13044

ELEVATION NOTES

- Elevations shown are geoidic and are referred to the CGVD08 geoidic datum.
- It is the responsibility of the user of this information to verify that the job benchmark has not been altered or disturbed and that its relative elevation and description agrees with the information shown on this drawing.

UTILITY NOTES

- This drawing cannot be accepted as acknowledging all of the utilities and it will be the responsibility of the user to contact the respective utility authorities for confirmation.
- Only visible surface utilities were located.
- A field location of underground plans by the pertinent utility authority is mandatory before any work involving breaking ground, probing, excavating etc.

THAMES STREET  
(FORMERLY THOMAS STREET)  
(INST 3719)