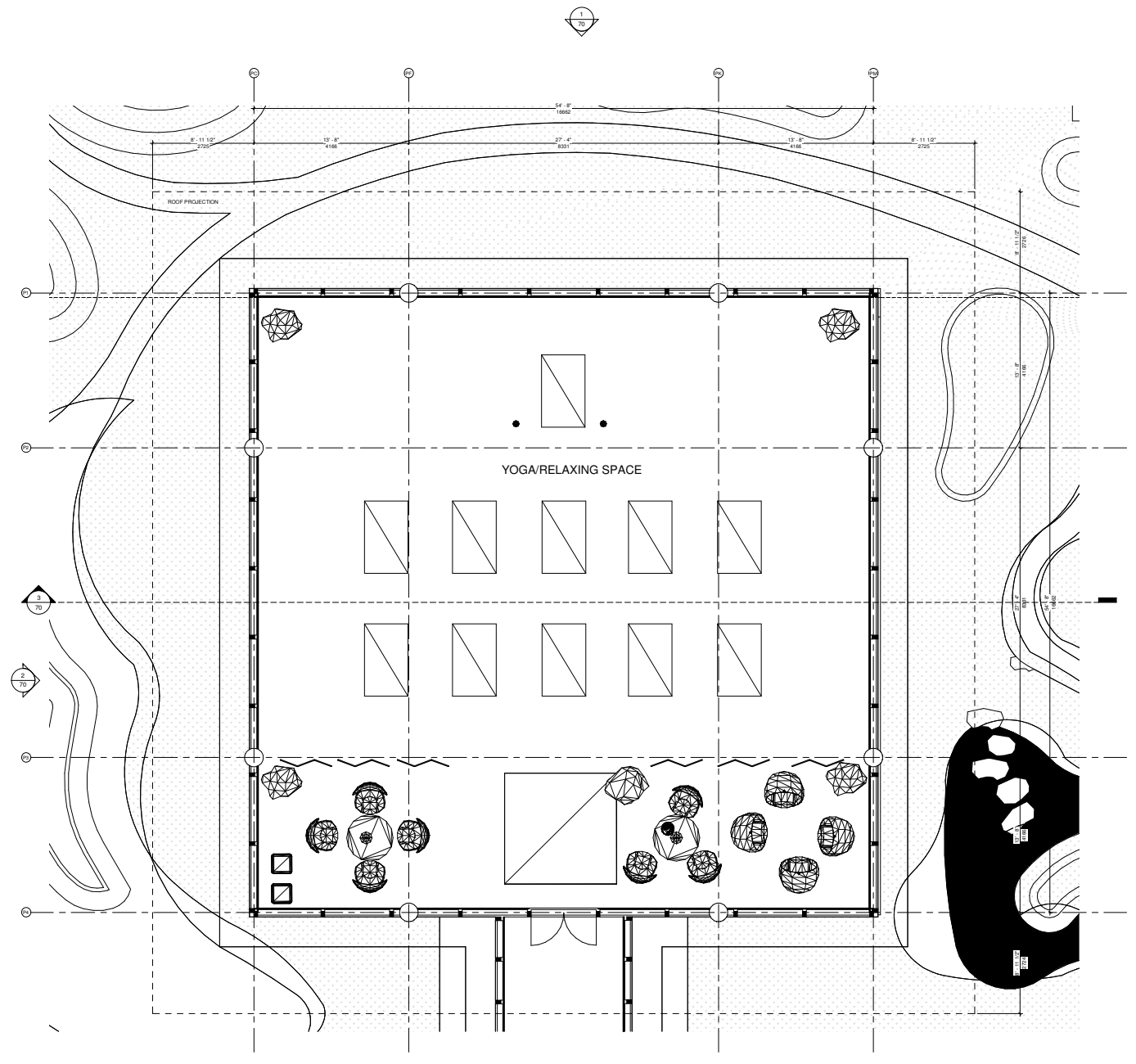


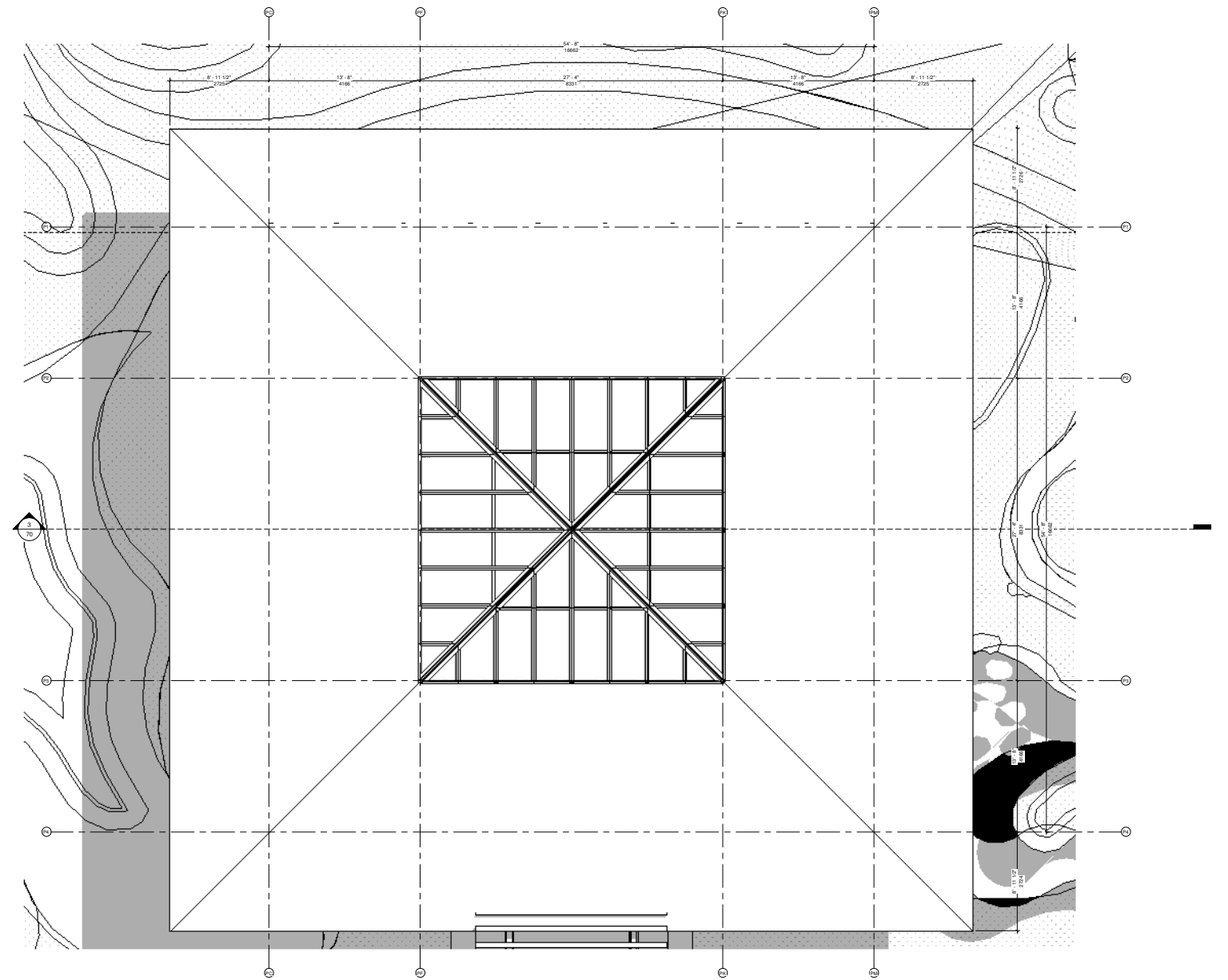


**APPROVED**  
By Lily Xu at 1:58 pm, Aug 05, 2022

**LILY XU, MCIP, RPP**  
**MANAGER, DEVELOPMENT REVIEW SOUTH**  
**PLANNING, INFRASTRUCTURE & ECONOMIC**  
**DEVELOPMENT DEPARTMENT, CITY OF OTTAWA**



1 01-LEVEL 01 - JAPANESE PAVILION  
1:50



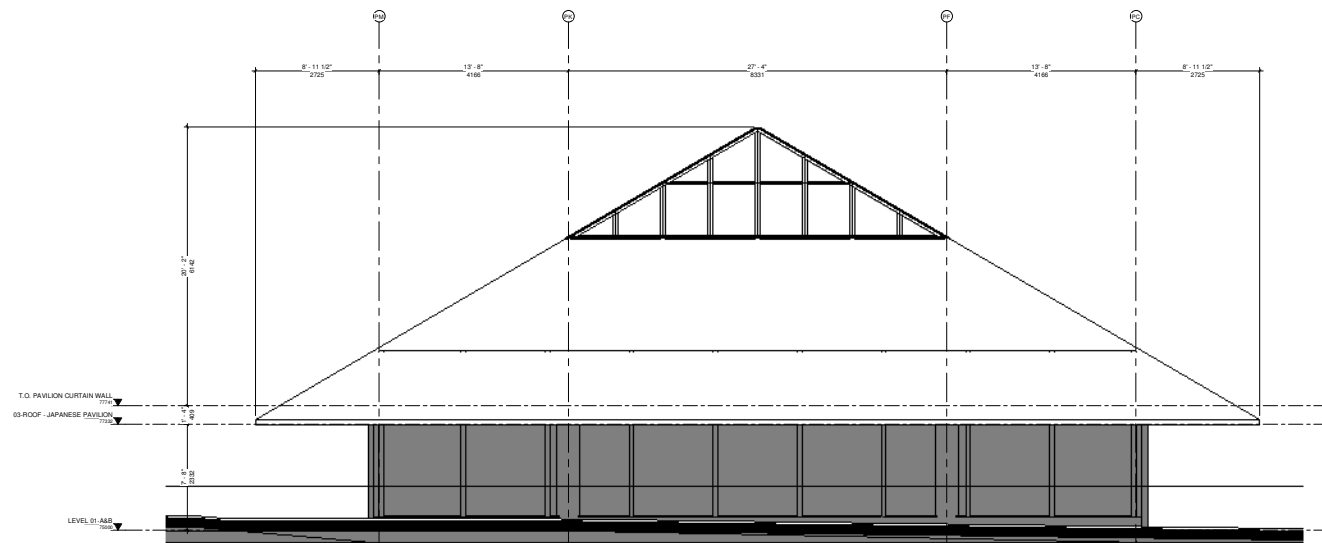
2 03-ROOF - JAPANESE PAVILION  
1:50

Design Title:  
**JAPANESE PAVILION**  
**PLANS**

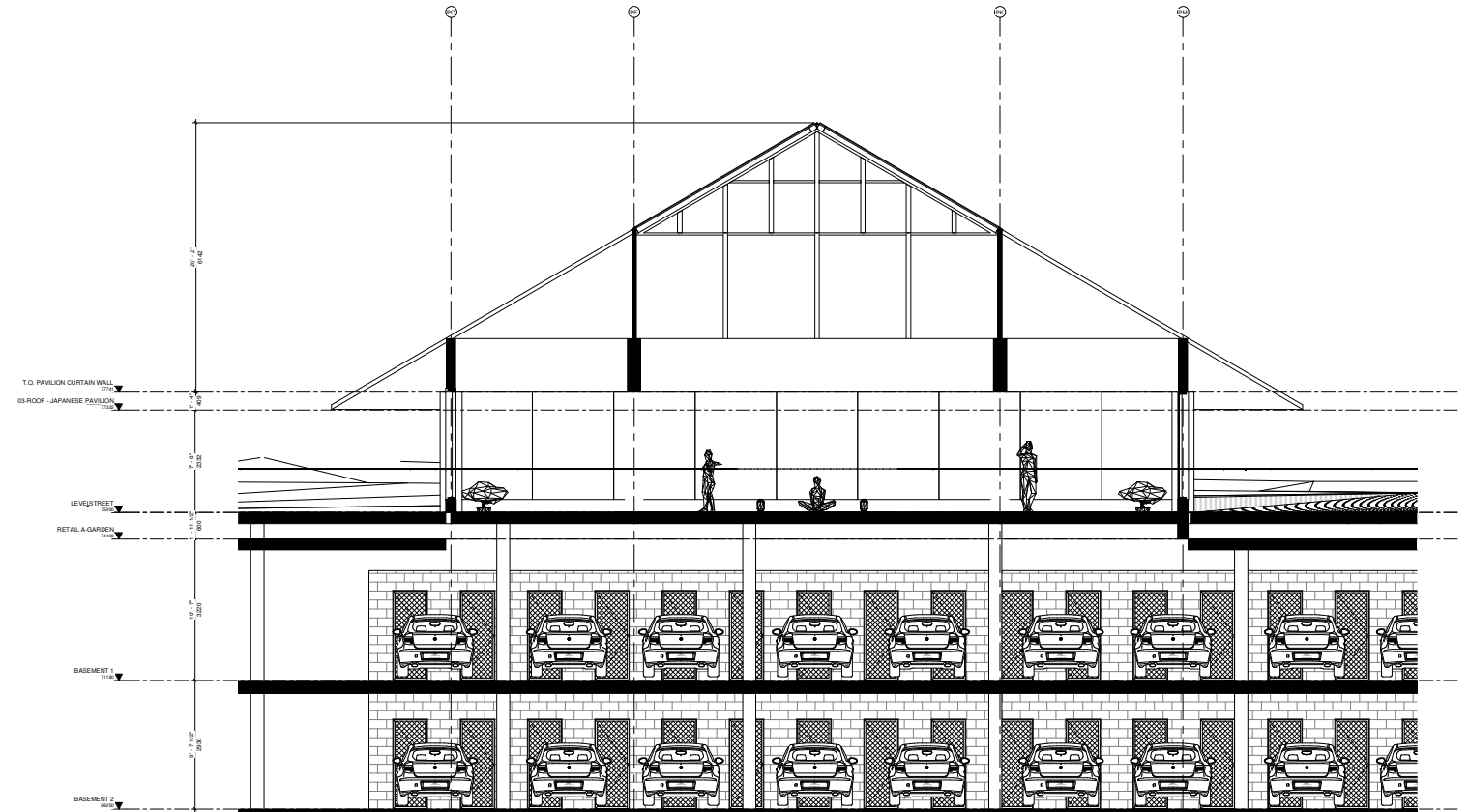
|                 |                    |
|-----------------|--------------------|
| Rev : 01        | designed by : G.M. |
| date : 04/05/22 | approved by : E.H. |
| file : 19-042   | sheet: 69          |

**1376, CARLING AV.**  
PHASE 2

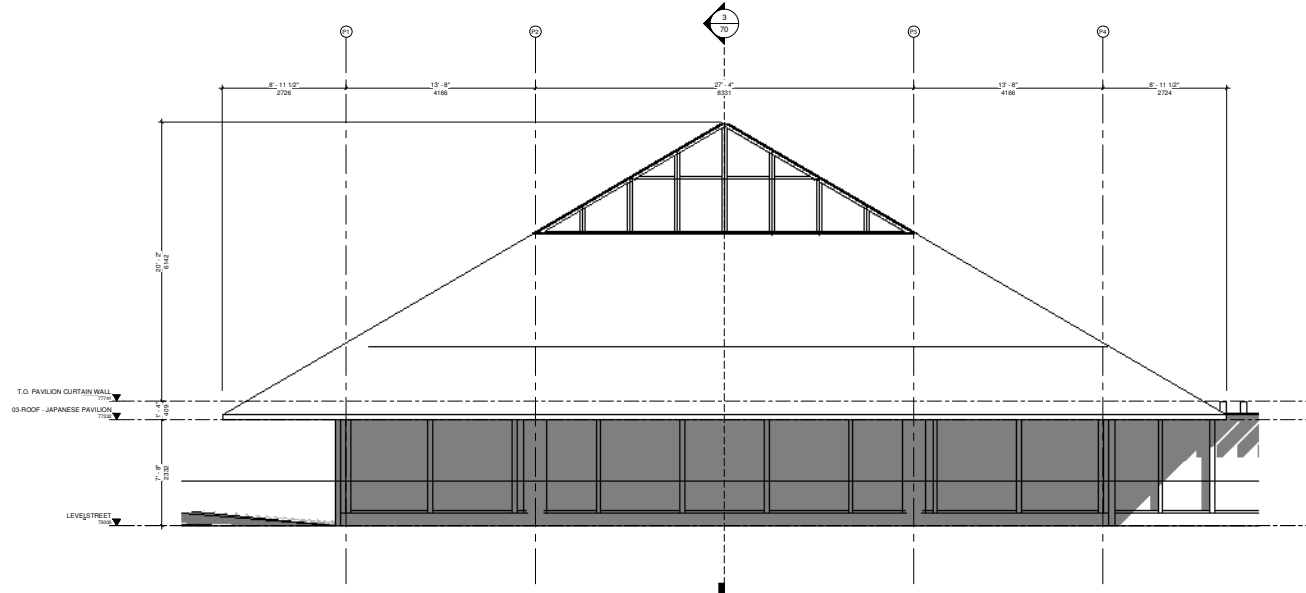
**D07-12-21-0092**  
Plan number : 18501



1 NORTH ELEVATION - JAPANESE PAVILLION  
1 : 50



3 SECTION JAPANESE PAVILLION  
1 : 50



2 WEST ELEVATION - JAPANESE ELEVATION  
1 : 50

**1376, CARLING AV.**  
PHASE 2

**APPROVED**  
*By Lily Xu at 1:59 pm, Aug 05, 2022*

**LILY XU, MCIP, RPP**  
**MANAGER, DEVELOPMENT REVIEW SOUTH**  
**PLANNING, INFRASTRUCTURE & ECONOMIC**  
**DEVELOPMENT DEPARTMENT, CITY OF OTTAWA**

Design Title:  
**JAPANESE PAV. - ELEVATIONS/SECTION**

|                 |                    |
|-----------------|--------------------|
| Rev : 01        | designed by : G.M. |
| date : 04/05/22 | approved by : E.H. |
| file : 19-042   | sheet: 70          |

**D07-12-21-0092**  
Plan number : 18501