



March 7, 2022

200543

Développements Proximi-T Inc.
3500 Atwater, Suite 6
Montreal, Quebec
K3H 1Y5

TECHNICAL MEMORANDUM – PAVEMENT DESIGN

**Re: PAVEMENT DESIGN FOR OVER THE PARKING STRUCTURE
971 MONTREAL ROAD
OTTAWA, ONTARIO**

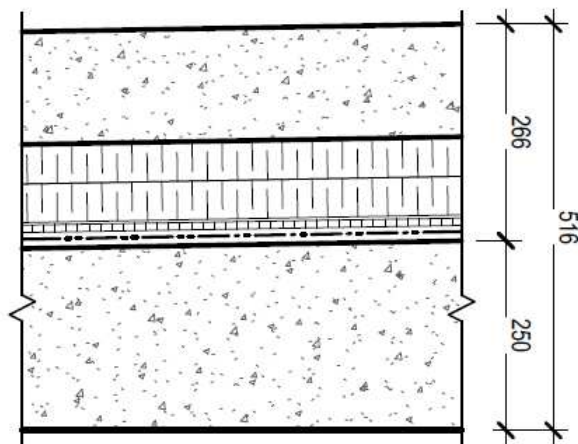
In response to the request for recommendations to the pavement design provided in the geotechnical report dated July 31, 2021, revised February 8, 2022 by Kollaard Associates Inc., Project 200543, for the proposed residential development at 971 Montreal Road, Vanier Ward, City of Ottawa, Ontario, Kollaard Associates offers the following:

The recommendations are as follows:

• 1. Pavement Structure Recommendations over the parking garage.

The thin pavement section over top of the underground parking garage can consist of the following:

Figure has been inserted for illustration only



Concrete Layer, 150mm

- Extruded Polystyrene Insulation, Shiplapped*;
- Drainage Board*;
- Monolithic Membrane System*;
- (*As specified by others)

Structural Slab Sloped to Drains, refer to Structural Engineer

The concrete layer, if reinforced and air entrained, may likely be able to be reduced to 135 or 140 mm if the available height is only 256 mm.



Développements Proximi-T Inc.
March 7, 2022

Technical Memorandum – Pavement Design for Over
Parking Garage
Proposed Residential Development
971 Montreal Road
City of Ottawa, ON
200543

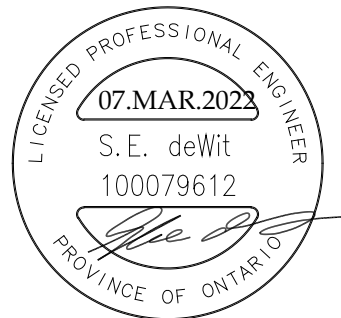
-2-

The pavement structure adjacent to the parking garage roof can be as specified in the geotechnical report.

We trust that this report provides sufficient information for your present purposes. If you have any questions concerning this information or if we can be of further assistance to you, please do not hesitate to contact our office.

Yours truly,
Kollaard Associates Inc.

Dean Tataryn, B.E.S., EP.



Steve deWit, P.Eng.