



2011 Queenview Dr. Suite 300
Ottawa, Ontario K2B 8C2 Canada
T 613-829-2601 | F 613-829-6291 | www.wsp.com

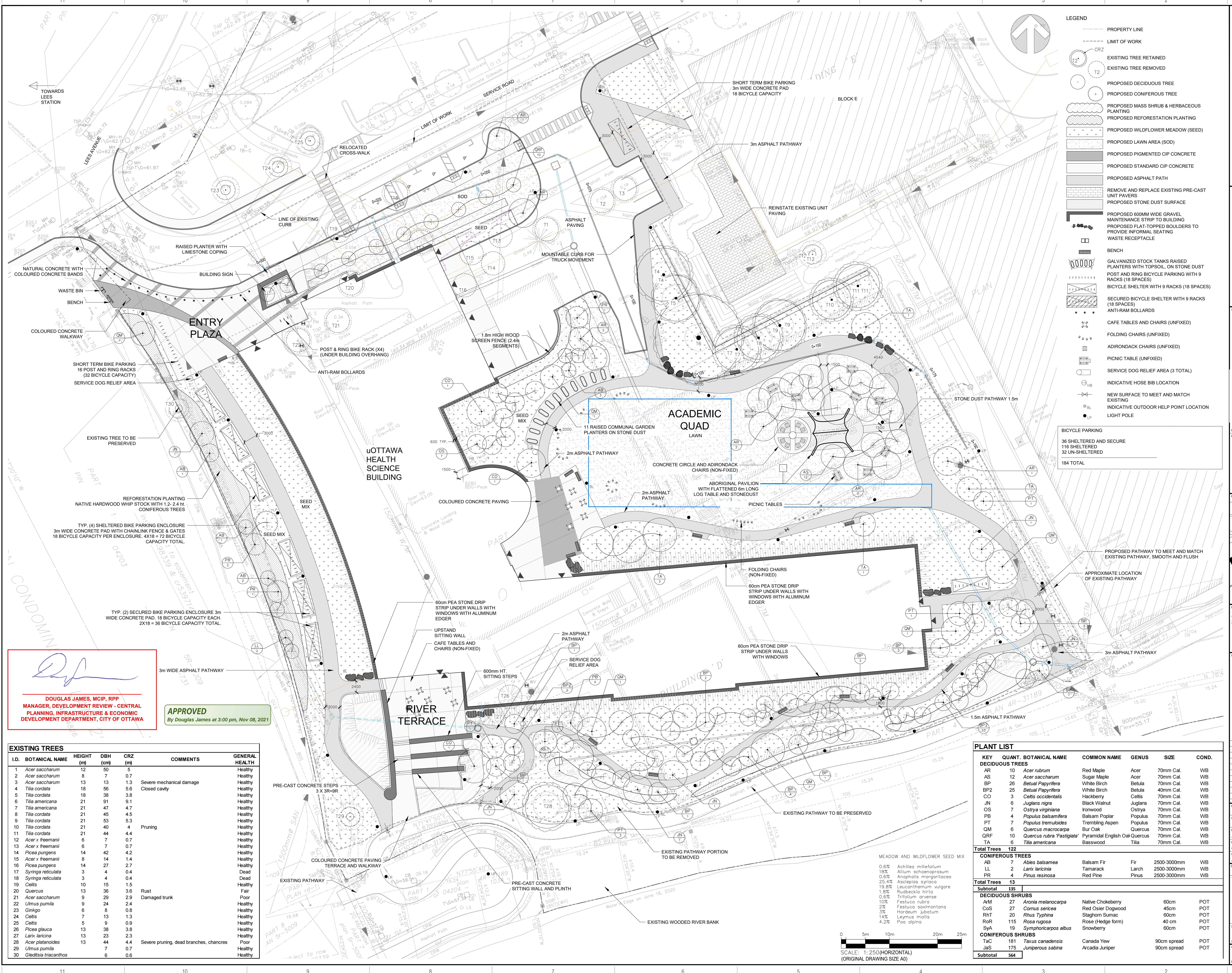


49 Aruga Drive
Ottawa, Ontario K2E 8A1 Canada
T 613-238-3381 | www.pcl.com



- LEGEND**
- PROPERTY LINE
 - LIMIT OF WORK
 - EXISTING TREE RETAINED
 - EXISTING TREE REMOVED
 - PROPOSED DECIDUOUS TREE
 - PROPOSED CONIFEROUS TREE
 - PROPOSED MASS SHRUB & HERBACEOUS PLANTING
 - PROPOSED REFORESTATION PLANTING
 - PROPOSED WILDFLOWER MEADOW (SEED)
 - PROPOSED LAWN AREA (SOD)
 - PROPOSED PIGMENTED CIP CONCRETE
 - PROPOSED STANDARD CIP CONCRETE
 - PROPOSED ASPHALT PATH
 - REMOVE AND REPLACE EXISTING PRE-CAST UNIT PAVERS
 - PROPOSED STONE DUST SURFACE
 - PROPOSED 600MM WIDE GRAVEL MAINTENANCE STRIP TO BUILDING
 - PROPOSED FLAT-TOPPED BOULDERS TO PROVIDE INFORMAL SEATING
 - WASTE RECEPTACLE
 - BENCH
 - GALVANIZED STOCK TANKS RAISED PLANTERS WITH TOPSOIL, ON STONE DUST
 - POST AND RING BICYCLE PARKING WITH 9 RACKS (18 SPACES)
 - BICYCLE SHELTER WITH 9 RACKS (18 SPACES)
 - SECURED BICYCLE SHELTER WITH 9 RACKS (18 SPACES)
 - ANTI-RAM BOLLARDS
 - CAFE TABLES AND CHAIRS (UNFIXED)
 - FOLDING CHAIRS (UNFIXED)
 - ADIRONDACK CHAIRS (UNFIXED)
 - PICNIC TABLE (UNFIXED)
 - SERVICE DOG RELIEF AREA (3 TOTAL)
 - INDICATIVE HOSE BIB LOCATION
 - NEW SURFACE TO MEET AND MATCH EXISTING
 - INDICATIVE OUTDOOR HELP POINT LOCATION
 - LIGHT POLE

BICYCLE PARKING
38 SHELTERED AND SECURE
116 SHELTERED
32 UN-SHELTERED
184 TOTAL



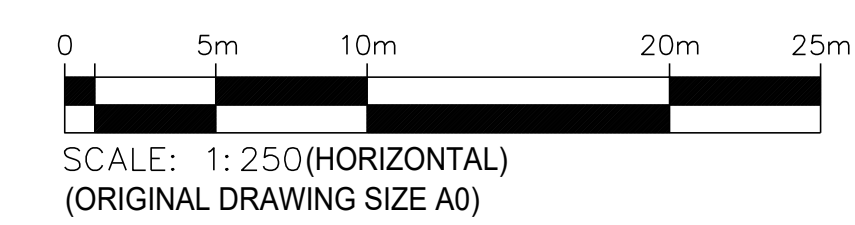
Douglas James
DOUGLAS JAMES, MCIP, RPP
MANAGER, DEVELOPMENT REVIEW - CENTRAL
PLANNING, INFRASTRUCTURE & ECONOMIC
DEVELOPMENT DEPARTMENT, CITY OF OTTAWA

APPROVED
By Douglas James at 3:00 pm, Nov 08, 2021

ID.	BOTANICAL NAME	HEIGHT (m)	DBH (cm)	CRZ (m)	COMMENTS	GENERAL HEALTH
1	Acer saccharum	12	50	5		Healthy
2	Acer saccharum	8	7	0.7		Healthy
3	Acer saccharum	13	13	1.3	Severe mechanical damage	Healthy
4	Tilia cordata	18	56	5.6	Closed cavity	Healthy
5	Tilia cordata	18	38	3.8		Healthy
6	Tilia americana	21	91	9.1		Healthy
7	Tilia americana	21	47	4.7		Healthy
8	Tilia cordata	21	45	4.5		Healthy
9	Tilia cordata	21	53	5.3		Healthy
10	Tilia cordata	21	40	4	Pruning	Healthy
11	Tilia cordata	21	44	4.4		Healthy
12	Acer x freemanii	6	7	0.7		Healthy
13	Acer x freemanii	6	7	0.7		Healthy
14	Picea pungens	14	42	4.2		Healthy
15	Acer x freemanii	8	14	1.4		Healthy
16	Picea pungens	14	27	2.7		Healthy
17	Syringa reticulata	3	4	0.4		Dead
18	Syringa reticulata	3	4	0.4		Dead
19	Celtis	10	15	1.5		Healthy
20	Quercus	13	36	3.6	Rust	Fair
21	Acer saccharum	9	29	2.9	Damaged trunk	Poor
22	Ulmus pumila	9	24	2.4		Healthy
23	Ginkgo	6	8	0.8		Healthy
24	Celtis	7	13	1.3		Healthy
25	Celtis	5	9	0.9		Healthy
26	Picea glauca	13	38	3.8		Healthy
27	Larix laricina	13	23	2.3		Healthy
28	Acer platanoides	13	44	4.4	Severe pruning, dead branches, chancres	Poor
29	Ulmus pumila	7	7	0.7		Healthy
30	Gleditsia tricanthos	6	0.6			Healthy

KEY	QUANT.	BOTANICAL NAME	COMMON NAME	GENUS	SIZE	COND.
DECIDUOUS TREES						
AR	10	Acer rubrum	Red Maple	Acer	70mm Cal.	WB
AS	12	Acer saccharum	Sugar Maple	Acer	70mm Cal.	WB
BP	26	Betula papyrifera	White Birch	Betula	70mm Cal.	WB
BP2	25	Betula papyrifera	White Birch	Betula	40mm Cal.	WB
CO	3	Celtis occidentalis	Hackberry	Celtis	70mm Cal.	WB
JN	6	Juglans nigra	Black Walnut	Juglans	70mm Cal.	WB
OS	7	Osira virginiana	Horwood	Osira	70mm Cal.	WB
PB	4	Populus balsamifera	Balsam Poplar	Populus	70mm Cal.	WB
PT	7	Populus tremuloides	Trembling Aspen	Populus	70mm Cal.	WB
QM	6	Quercus macrocarpa	Bur Oak	Quercus	70mm Cal.	WB
QR	10	Quercus rubra 'Fastigiata'	Pyramidal English Oak	Quercus	70mm Cal.	WB
TA	6	Tilia americana	Basswood	Tilia	70mm Cal.	WB
Total Trees 122						
CONIFEROUS TREES						
LL	2	Abies balsamea	Balsam Fir	Fir	2500-3000mm	WB
LR	2	Larix laricina	Tamarack	Larch	2500-3000mm	WB
PR	4	Pinus resinosa	Red Pine	Pinus	2500-3000mm	WB
Total Trees 13						
Subtotal 135						
DECIDUOUS SHRUBS						
AM	27	Aronia melanocarpa	Native Chokeberry		60cm	POT
CoS	27	Cornus sericea	Red Osier Dogwood		45cm	POT
RHT	20	Rhus typhina	Staghorn Sumac		60cm	POT
RoR	115	Rosa rugosa	Rose (Hedge form)		40 cm	POT
SyA	19	Symphoricarpos albus	Snowberry		60cm	POT
CONIFEROUS SHRUBS						
TaC	181	Taxus canadensis	Canada Yew		90cm spread	POT
JaS	175	Juniperus sabina	Arcadia Juniper		90cm spread	POT
Subtotal 564						

MEADOW AND WILDFLOWER SEED MIX
0.6% Achillea millefolium
18% Allium schoenoprasum
0.6% Anaphalis margaritacea
25.4% Asclepias syriaco
19.6% Leuconanthemum vulgare
1.8% Rudbeckia hirta
0.6% Trifolium arvense
10% Festuca rubra
2% Festuca sovianmontana
3% Hordeum jubatum
14% Festuca ovina
4.2% Poa annua



CLIENT REF #
PROJECT
200 LEES AVENUE
OTTAWA, ON

KEY PLAN

DISCLAIMER:
THIS DRAWING AND DESIGN IS COPYRIGHT PROTECTED WORK. SHALL NOT BE REPRODUCED OR TRANSMITTED IN ANY FORM OR BY ANY MEANS, ELECTRONIC OR MECHANICAL, INCLUDING PHOTOCOPYING, RECORDING, OR BY ANY INFORMATION STORAGE AND RETRIEVAL SYSTEM, WITHOUT THE WRITTEN PERMISSION OF ARCHITECTURE 49. ALL DIMENSIONS AND UTILITY LOCATIONS AND REPORT ALL ERRORS AND OMISSIONS PRIOR TO COMMENCING WORK. THIS DRAWING IS NOT TO BE SCALED.

ISSUED FOR: REVISION

NO.	DATE	ISSUED FOR	BY	DATE	DESCRIPTION
1	2021-10-15	ISSUED FOR UDRP	JW		
2	2021-06-28	ISSUED FOR SPCA	JW		

ORIGINAL SCALE: 1:250
DESIGNED BY: JW
DRAWN BY: JM
CHECKED BY: JW/JL
DISCIPLINE: LANDSCAPE ARCHITECTURE

TITLE: LANDSCAPE PLAN

SHEET NUMBER: L1

ISSUED FOR SPCA