

Ottawa (Head Office)

1800 Bantree Street
Ottawa, Ontario K1B 5L6

☎ 613.745.2444

☎ 613.745.9994

www.cwwcanada.com

1.866.695.0155

Montreal

2700 Sabourin Street
St-Laurent, Quebec H4S 1M2

☎ 514.738.2666

☎ 514.738.9762



**CLEAN WATER
WORKS INC.**

INTEGRATED SEWER SOLUTIONS



CONSTRUCTION

**UNIVERSITY OF OTTAWA
200 LEES AVE
Ottawa, Ontario**

SEWER CCTV INSPECTION REPORT

Report ID

109226ST1

Sewer Use

Storm

Completion Date

October 21, 2021

Inspected Length

386.00 meters

THE WAY IS CLEAR™

- Watermain Swabbing
- Hydro Vacuum Excavation
- CCTV Inspection of Sewers
- Plumbing & Drain Services
- Structural Rehabilitation of Manholes
- Cured-in-Place-Pipe Lining & Spot Repairs
- Grouting, Test & Seal Joints, Manholes & Services
- Lateral Sewer Inspection & Locates From Main
- Sewer Cleaning, Flushing & Pumping

Table of contents



	Page
1. Index of pipes	2
2. Structural rating	3
3. O&M rating	4
4. Pipe summary and condition details	5
5. Vision Report© Legend	42

1. Index of pipes

13 items

Inspected length : 386.00

Total length : 393.10

Pipe	Start/End	Direction	Road	Date	Inspected	Total	Page
CB4 STMH13	CB4 --> STMH13	Direction of flow	200 Lees Ave.	20/10/2021 10:53 AM	18.4	18.4	5
CB7 MAIN	CB7 --> MAIN	Direction of flow	200 Lees Ave.	20/10/2021 11:47 AM	19.5	23.8	8
STMH13 STMH13A	STMH13 --> STMH13A	Direction of flow	200 Lees Ave.	20/10/2021 1:45 PM	93.2	111.5	13
STMH13 STMH13A	STMH13A --> STMH13	Against flow	200 Lees Ave.	20/10/2021 1:28 PM	16.6	111.5	10
STMH13A STMH14	STMH14 --> STMH13A	Against flow	200 Lees Ave.	20/10/2021 2:32 PM	26.5	26.5	19
STMH14 STMH15	STMH14 --> STORMCEPTOR	Direction of flow	200 Lees Ave.	20/10/2021 2:47 PM	11.9	13	22
STMH15 STMH16	STMH15 --> STMH16	Direction of flow	200 Lees Ave.	20/10/2021 3:05 PM	39.4	39.4	24
STMH16 STMH17	STMH16 --> STMH17	Direction of flow	200 Lees Ave.	20/10/2021 3:27 PM	33	33	28
STMH17 STMH19	STMH19 --> STMH17	Against flow	200 Lees Ave.	21/10/2021 11:04 AM	42.7	42.7	31
STMH19 STMH20	STMH20 --> STMH19	Against flow	200 Lees Ave.	21/10/2021 10:58 AM	62	62	33
STMH20 STMH21	STMH20 --> STMH21	Direction of flow	200 Lees Ave.	21/10/2021 10:42 AM	11.8	11.8	35
STMH22 STMH21	STMH22 --> STMH21	Direction of flow	200 Lees Ave.	21/10/2021 10:00 AM	7.6	7.6	37
STORMCEPTOR STMH15	STMH15 --> STORMCEPTOR	Against flow	200 Lees Ave.	20/10/2021 3:02 PM	3.4	3.4	40

2. Structural rating

13 items

5 - Most significant defect grade (3 of 13 items)

Score	Quick	Index	Pipe	Start/End	Direction	Road	Page
40	5241	2.4	STMH13 STMH13A	STMH13 --> STMH13A	Direction of flow	200 Lees Ave.	13
17	5131	1.9	STMH15 STMH16	STMH15 --> STMH16	Direction of flow	200 Lees Ave.	24
5	5100	5	STMH13 STMH13A	STMH13A --> STMH13	Against flow	200 Lees Ave.	10

3 - Moderate defect grade (4 of 13 items)

Score	Quick	Index	Pipe	Start/End	Direction	Road	Page
67	312E	2	STMH19 STMH20	STMH20 --> STMH19	Against flow	200 Lees Ave.	33
12	3223	2.4	STMH22 STMH21	STMH22 --> STMH21	Direction of flow	200 Lees Ave.	37
11	3124	2.2	STMH20 STMH21	STMH20 --> STMH21	Direction of flow	200 Lees Ave.	35
9	3123	2.3	STMH16 STMH17	STMH16 --> STMH17	Direction of flow	200 Lees Ave.	28

2 - Minor to Moderate (4 of 13 items)

Score	Quick	Index	Pipe	Start/End	Direction	Road	Page
20	2A00	2	STMH17 STMH19	STMH19 --> STMH17	Against flow	200 Lees Ave.	31
8	2312	1.6	CB4 STMH13	CB4 --> STMH13	Direction of flow	200 Lees Ave.	5
2	2100	2	STMH13A STMH14	STMH14 --> STMH13A	Against flow	200 Lees Ave.	19
2	2100	2	STMH14 STMH15	STMH14 --> STORMCEPTOR	Direction of flow	200 Lees Ave.	22

0 - No Defects (2 of 13 items)

Score	Quick	Index	Pipe	Start/End	Direction	Road	Page
0	0000	0	CB7 MAIN	CB7 --> MAIN	Direction of flow	200 Lees Ave.	8
0	0000	0	STORMCEPTOR STMH15	STMH15 --> STORMCEPTOR	Against flow	200 Lees Ave.	40

3. O&M rating

13 items

4 - Significant (2 of 13 items)

Score	Quick	Index	Structural	Pipe	Start/End	Direction	Road	Page
8	4200	4	2	STMH13A STMH14	STMH14 --> STMH13A	Against flow	200 Lees Ave.	19
4	4100	4	0	CB7 MAIN	CB7 --> MAIN	Direction of flow	200 Lees Ave.	8

3 - Moderate defect grade (2 of 13 items)

Score	Quick	Index	Structural	Pipe	Start/End	Direction	Road	Page
10	3222	2.5	5	STMH13 STMH13A	STMH13 --> STMH13A	Direction of flow	200 Lees Ave.	13
6	3200	3	5	STMH13 STMH13A	STMH13A --> STMH13	Against flow	200 Lees Ave.	10

2 - Minor to Moderate (3 of 13 items)

Score	Quick	Index	Structural	Pipe	Start/End	Direction	Road	Page
8	2400	2	5	STMH15 STMH16	STMH15 --> STMH16	Direction of flow	200 Lees Ave.	24
8	2400	2	3	STMH16 STMH17	STMH16 --> STMH17	Direction of flow	200 Lees Ave.	28
3	2111	1.5	2	CB4 STMH13	CB4 --> STMH13	Direction of flow	200 Lees Ave.	5

0 - No Defects (6 of 13 items)

Score	Quick	Index	Structural	Pipe	Start/End	Direction	Road	Page
0	0000	0	2	STMH14 STMH15	STMH14 --> STORMCEPTOR	Direction of flow	200 Lees Ave.	22
0	0000	0	2	STMH17 STMH19	STMH19 --> STMH17	Against flow	200 Lees Ave.	31
0	0000	0	3	STMH19 STMH20	STMH20 --> STMH19	Against flow	200 Lees Ave.	33
0	0000	0	3	STMH20 STMH21	STMH20 --> STMH21	Direction of flow	200 Lees Ave.	35
0	0000	0	3	STMH22 STMH21	STMH22 --> STMH21	Direction of flow	200 Lees Ave.	37
0	0000	0	0	STORMCEPTOR STMH15	STMH15 --> STORMCEPTOR	Against flow	200 Lees Ave.	40

4. Pipe summary and condition details

Pipe identification

Pipe: CB4 STMH13	Direction of inspection: CB4 --> STMH13
Direction of flow: CB4 --> STMH13	Direction: Direction of flow

Pipe location

Road: 200 Lees Ave.	<u>UPSTREAM</u>	<u>DOWNSTREAM</u>
Crossroad:	Easting (X):	Easting (X):
Drainage Area:	Northing (Y):	Northing (Y):
City: Ottawa	Elevation (Z):	Elevation (Z):
Location:	GPS Accuracy:	
Owner: Unknown	Coordinate System:	
Road segment:	Vertical Datum:	

Pipe characteristics

Sewer Use: Stormwater	Inspected length: 18.4
Height: 300	Total length: 18.4
Width:	Rim/Inv.:
Shape: Circular	Grade/Inv.:
Material: Polyvinyl Chloride	Rim/Grade:
Lining:	Rim/Inv.:
Joint length: 2	Grade/Inv.:
Year laid:	Rim/Grade:
Year renewed:	Sewer category:

Additional details

Inspection standard: PACP 6.0	Location details:
Date: 20/10/2021 10:53 AM	Surveyed by: Derek Jessup
Project Number: 200 Lees Ave.	Certificate #: U06180703002192
Customer: PCL Construction	Pre-Cleaning: Jetting
PO number:	Date cleaned:
Work order: 109226	Unit of measurement: Metric
Purpose:	Media label: 109226ST1
Weather: Dry	Sheet #:
Flow control: Not Controlled	

Structural rating

O&M rating

Overall rating

Peak: 2	Peak: 2	Peak: 2
Quick rating: 2312	Quick rating: 2111	Quick rating: 2413
Score: 8	Score: 3	Score: 11
Index: 1.6	Index: 1.5	Index: 1.6

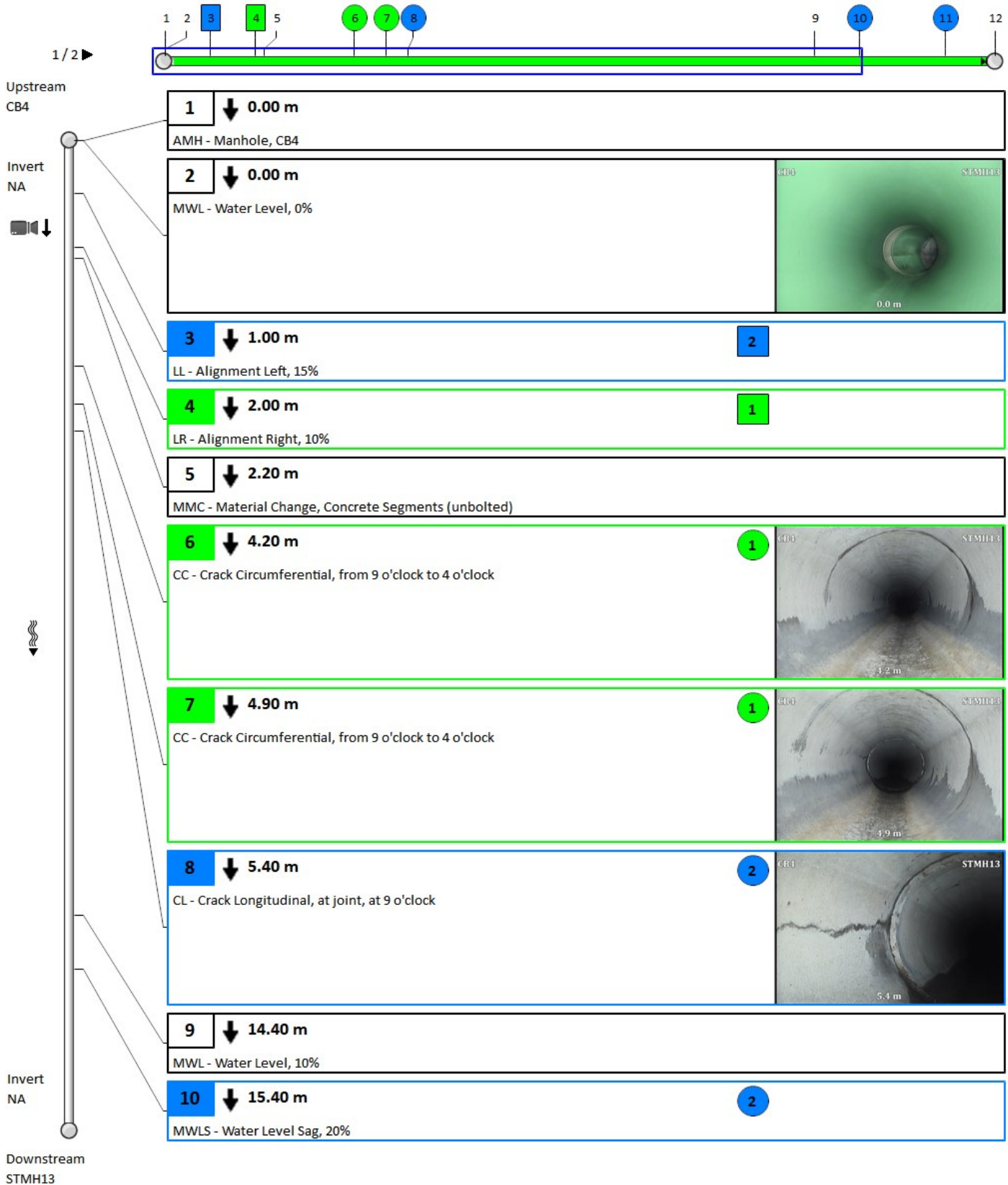
Additional information

--

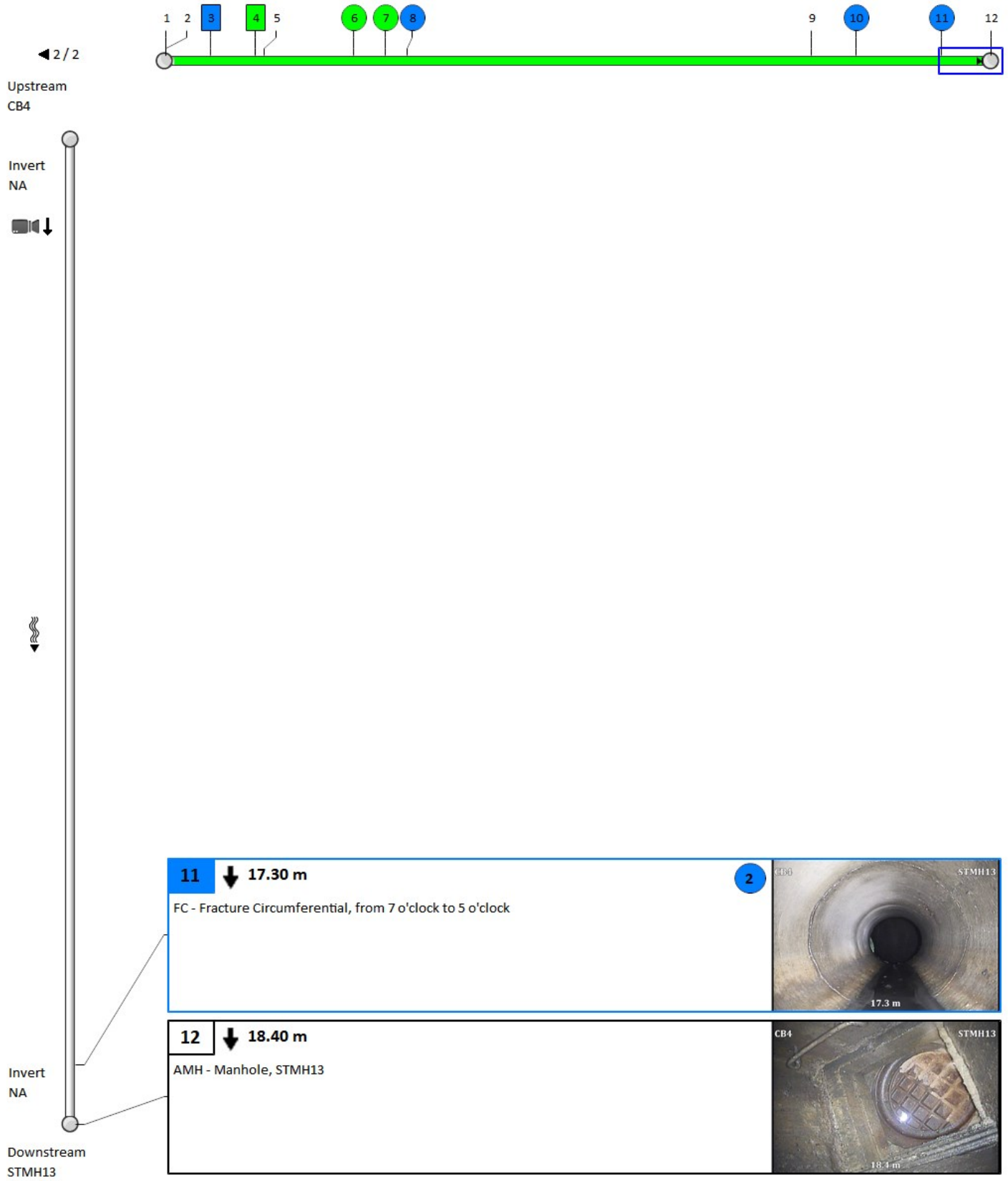
Other information

Report ID: 109226ST1	Information 6:
Information 2:	Information 7:
Information 3:	Information 8:
Information 4:	Information 9:
Information 5:	Information 10:

4. Pipe summary and condition details



4. Pipe summary and condition details



4. Pipe summary and condition details

Pipe identification

Pipe: CB7 MAIN	Direction of inspection: CB7 --> MAIN
Direction of flow: CB7 --> MAIN	Direction: Direction of flow

Pipe location

Road: 200 Lees Ave.	<u>UPSTREAM</u>	<u>DOWNSTREAM</u>
Crossroad:	Easting (X):	Easting (X):
Drainage Area:	Northing (Y):	Northing (Y):
City: Ottawa	Elevation (Z):	Elevation (Z):
Location:	GPS Accuracy:	
Owner: Unknown	Coordinate System:	
Road segment:	Vertical Datum:	

Pipe characteristics

Sewer Use: Stormwater	Inspected length: 19.5
Height: 250	Total length: 23.8
Width:	Rim/Inv.:
Shape: Circular	Grade/Inv.:
Material: Polyvinyl Chloride	Rim/Grade:
Lining:	Rim/Inv.:
Joint length: 1	Grade/Inv.:
Year laid:	Rim/Grade:
Year renewed:	Sewer category:

Additional details

Inspection standard: PACP 6.0	Location details:
Date: 20/10/2021 11:47 AM	Surveyed by: Derek Jessup
Project Number: 200 Lees Ave.	Certificate #: U06180703002192
Customer: PCL Construction	Pre-Cleaning: Jetting
PO number:	Date cleaned:
Work order: 109226	Unit of measurement: Metric
Purpose:	Media label: 109226ST1
Weather: Dry	Sheet #:
Flow control: Not Controlled	

Structural rating

O&M rating

Overall rating

Peak: 0	Peak: 4	Peak: 4
Quick rating: 0000	Quick rating: 4100	Quick rating: 4100
Score: 0	Score: 4	Score: 4
Index: 0	Index: 4	Index: 4

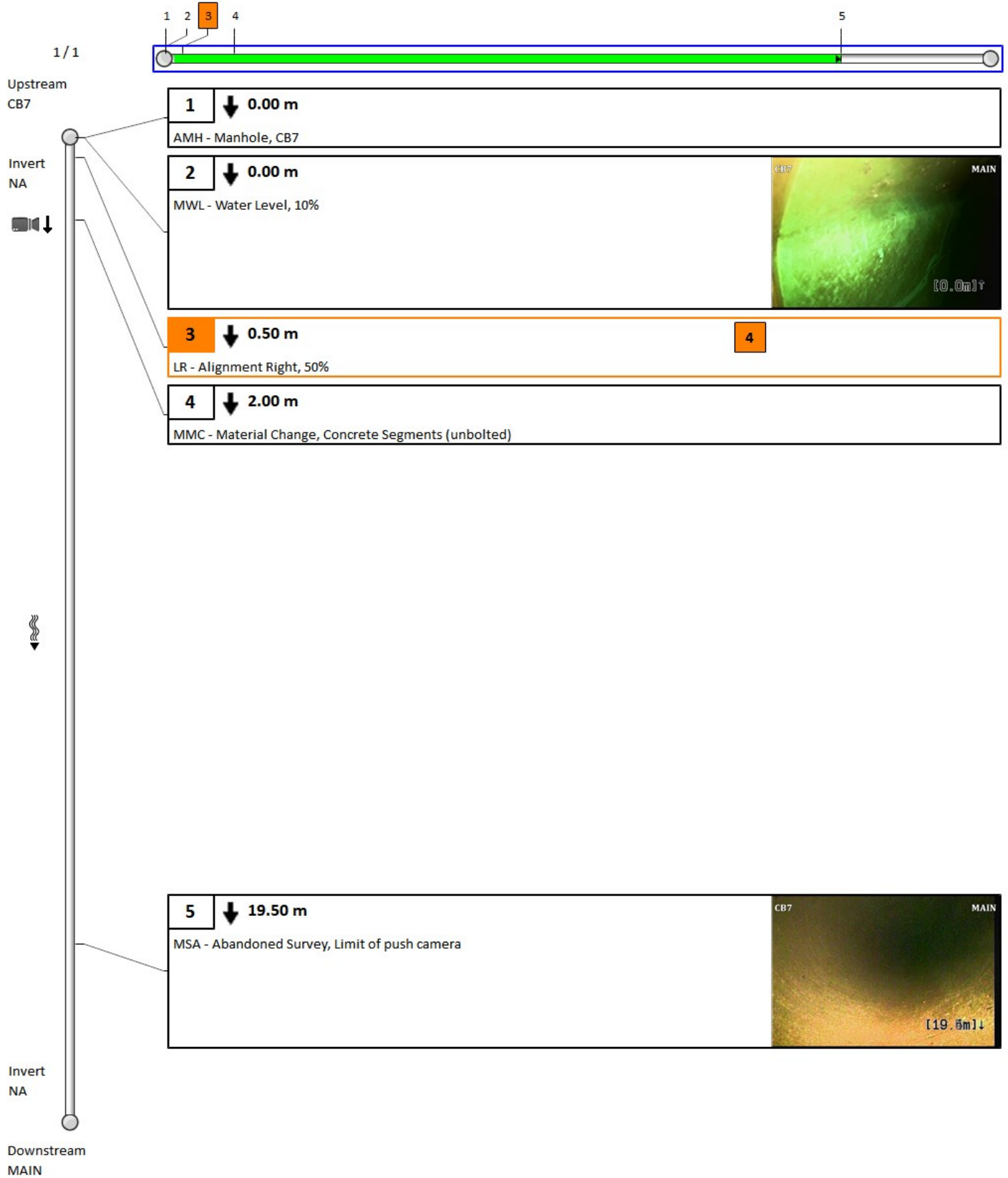
Additional information

--

Other information

Report ID: 109226ST1	Information 6:
Information 2:	Information 7:
Information 3:	Information 8:
Information 4:	Information 9:
Information 5:	Information 10:

4. Pipe summary and condition details



4. Pipe summary and condition details

Pipe identification

Pipe: STMH13 STMH13A	Direction of inspection: STMH13A --> STMH13
Direction of flow: STMH13 --> STMH13A	Direction: Against flow

Pipe location

Road: 200 Lees Ave.	<u>UPSTREAM</u>	<u>DOWNSTREAM</u>
Crossroad:	Easting (X):	Easting (X):
Drainage Area:	Northing (Y):	Northing (Y):
City: Ottawa	Elevation (Z):	Elevation (Z):
Location:	GPS Accuracy:	
Owner: Unknown	Coordinate System:	
Road segment:	Vertical Datum:	

Pipe characteristics

Sewer Use: Stormwater	Inspected length: 16.6
Height: 225	Total length: 111.5
Width:	Rim/Inv.:
Shape: Circular	Grade/Inv.:
Material: Concrete Segments (unbolted)	Rim/Grade:
Lining:	Rim/Inv.:
Joint length: 1	Grade/Inv.:
Year laid:	Rim/Grade:
Year renewed:	Sewer category:

Additional details

Inspection standard: PACP 6.0	Location details:
Date: 20/10/2021 1:28 PM	Surveyed by: Derek Jessup
Project Number: 200 Lees Ave.	Certificate #: U06180703002192
Customer: PCL Construction	Pre-Cleaning: Jetting
PO number:	Date cleaned:
Work order: 109226	Unit of measurement: Metric
Purpose:	Media label: 109226ST1
Weather: Dry	Sheet #:
Flow control: Not Controlled	

Structural rating

O&M rating

Overall rating

Peak: 5	Peak: 3	Peak: 5
Quick rating: 5100	Quick rating: 3200	Quick rating: 5132
Score: 5	Score: 6	Score: 11
Index: 5	Index: 3	Index: 3.7

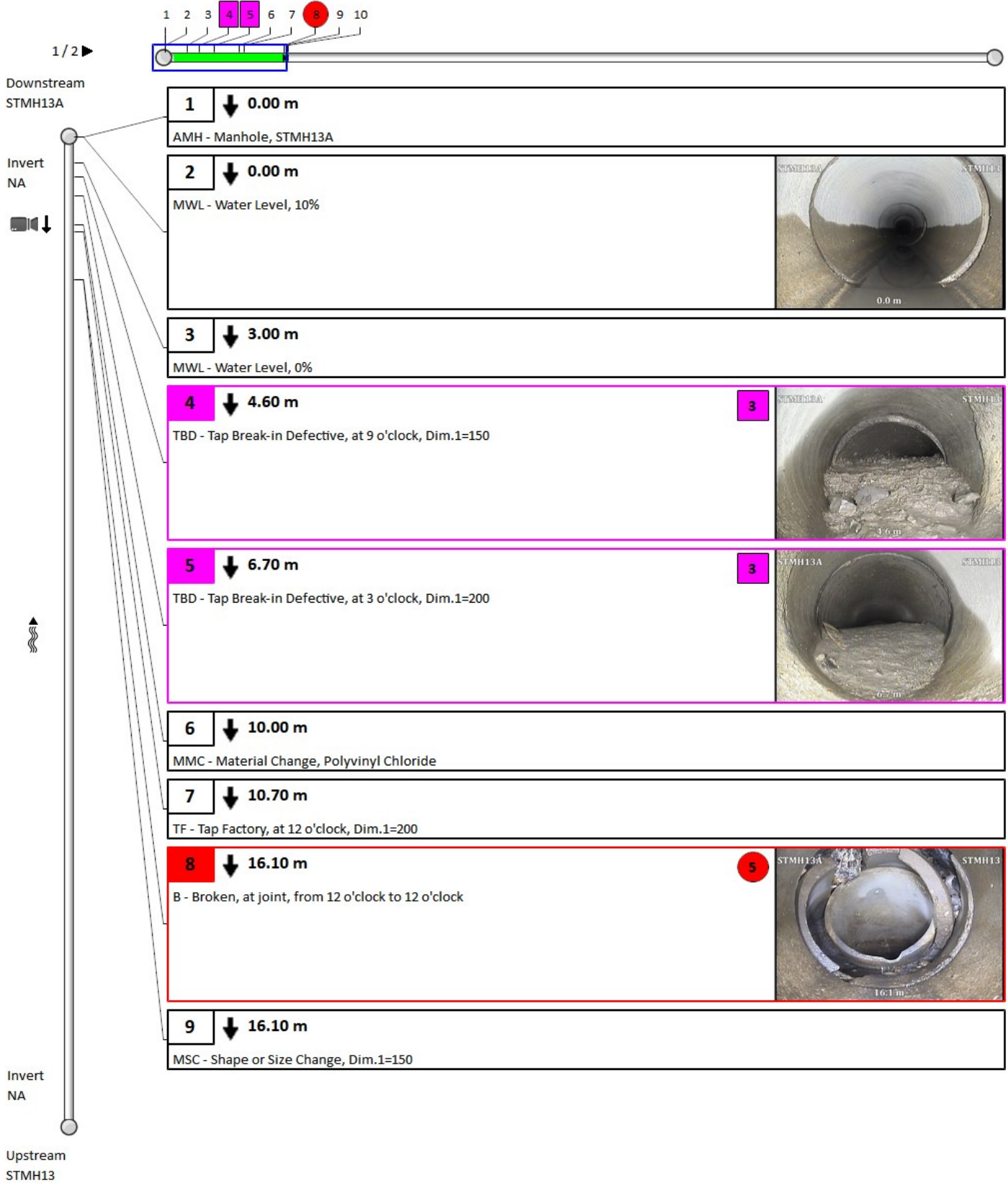
Additional information

--

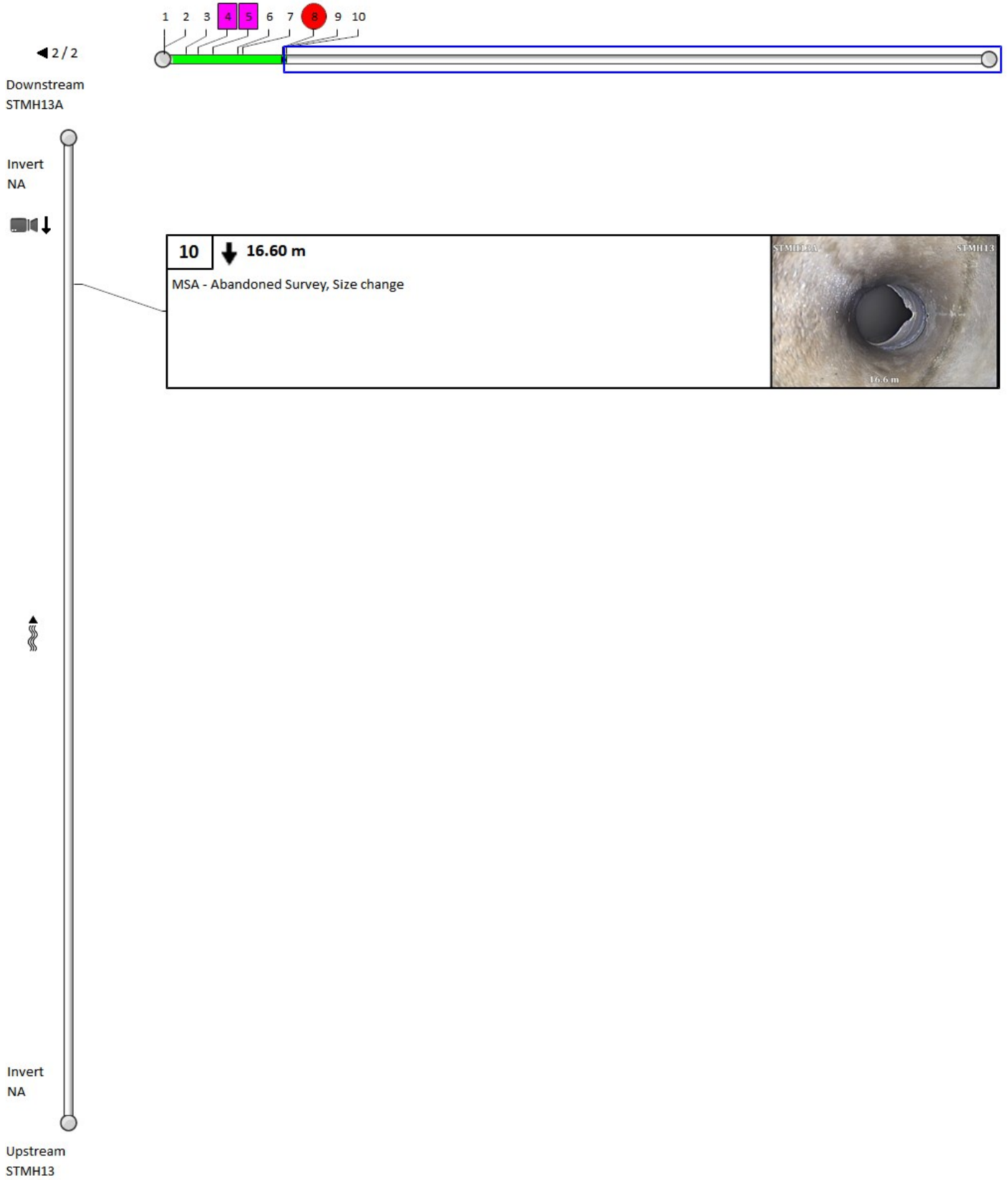
Other information

Report ID: 109226ST1	Information 6:
Information 2:	Information 7:
Information 3:	Information 8:
Information 4:	Information 9:
Information 5:	Information 10:

4. Pipe summary and condition details



4. Pipe summary and condition details



4. Pipe summary and condition details

Pipe identification

Pipe: STMH13 STMH13A	Direction of inspection: STMH13 --> STMH13A
Direction of flow: STMH13 --> STMH13A	Direction: Direction of flow

Pipe location

Road: 200 Lees Ave.	<u>UPSTREAM</u>	<u>DOWNSTREAM</u>
Crossroad:	Easting (X):	Easting (X):
Drainage Area:	Northing (Y):	Northing (Y):
City: Ottawa	Elevation (Z):	Elevation (Z):
Location:	GPS Accuracy:	
Owner: Unknown	Coordinate System:	
Road segment:	Vertical Datum:	

Pipe characteristics

Sewer Use: Stormwater	Inspected length: 93.2
Height: 200	Total length: 111.5
Width:	Rim/Inv.:
Shape: Circular	Grade/Inv.:
Material: Polyvinyl Chloride	Rim/Grade:
Lining:	Rim/Inv.:
Joint length: 1	Grade/Inv.:
Year laid:	Rim/Grade:
Year renewed:	Sewer category:

Additional details

Inspection standard: PACP 6.0	Location details:
Date: 20/10/2021 1:45 PM	Surveyed by: Derek Jessup
Project Number: 200 Lees Ave.	Certificate #: U06180703002192
Customer: PCL Construction	Pre-Cleaning: Jetting
PO number:	Date cleaned:
Work order: 109226	Unit of measurement: Metric
Purpose:	Media label: 109226ST1
Weather: Dry	Sheet #:
Flow control: Not Controlled	

Structural rating

O&M rating

Overall rating

Peak: 5	Peak: 3	Peak: 5
Quick rating: 5241	Quick rating: 3222	Quick rating: 5241
Score: 40	Score: 10	Score: 50
Index: 2.4	Index: 2.5	Index: 2.4

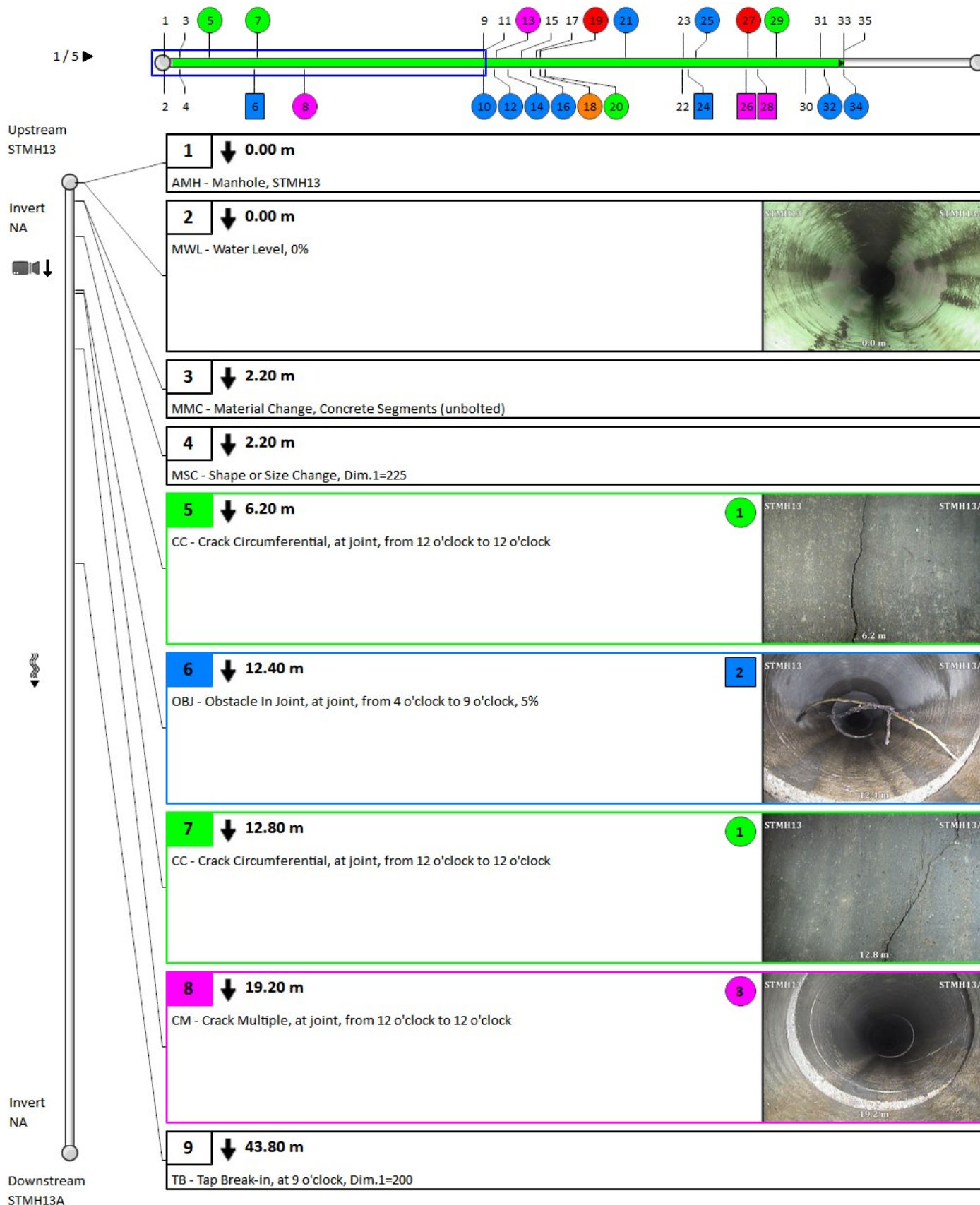
Additional information

--

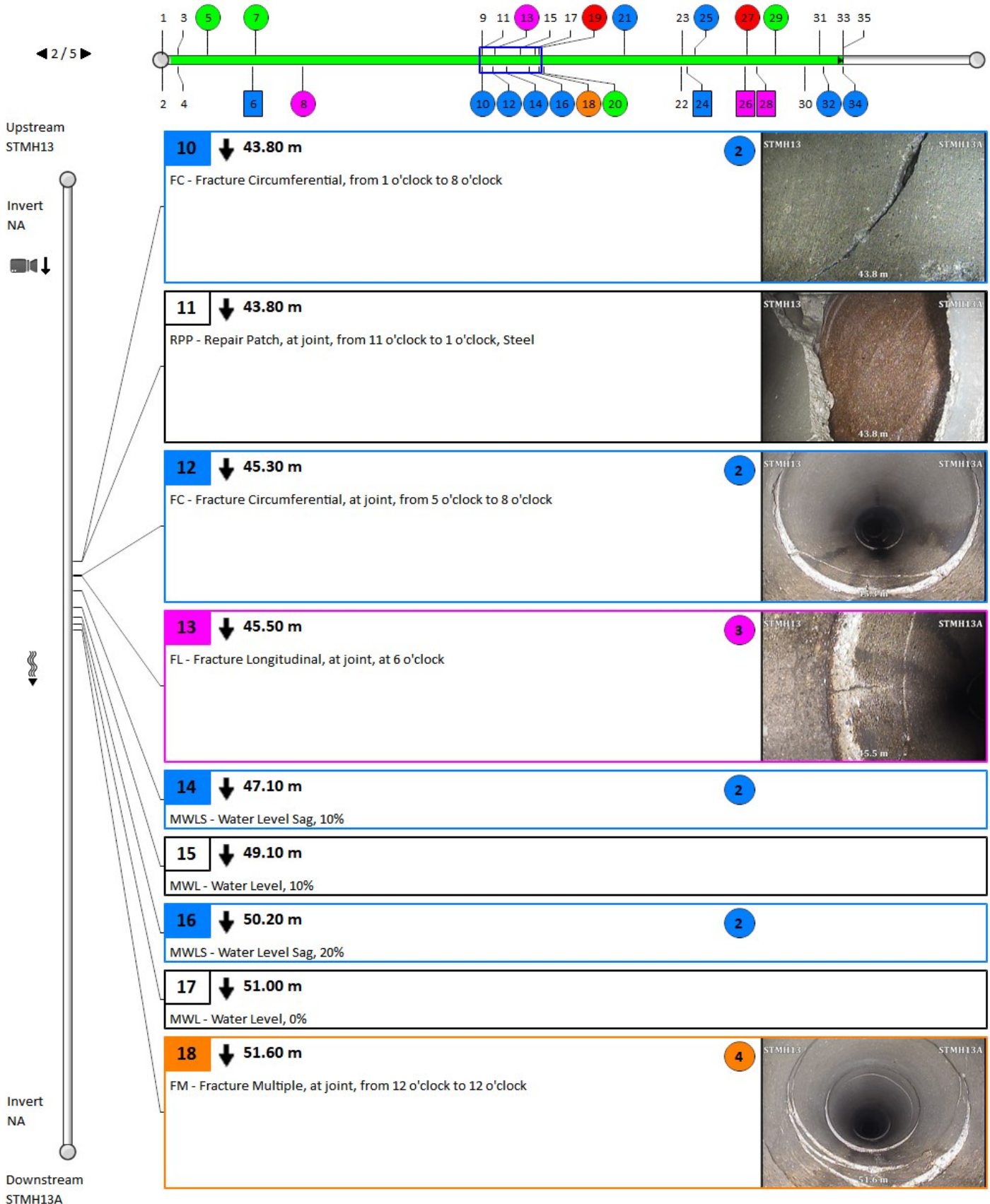
Other information

Report ID: 109226ST1	Information 6:
Information 2:	Information 7:
Information 3:	Information 8:
Information 4:	Information 9:
Information 5:	Information 10:

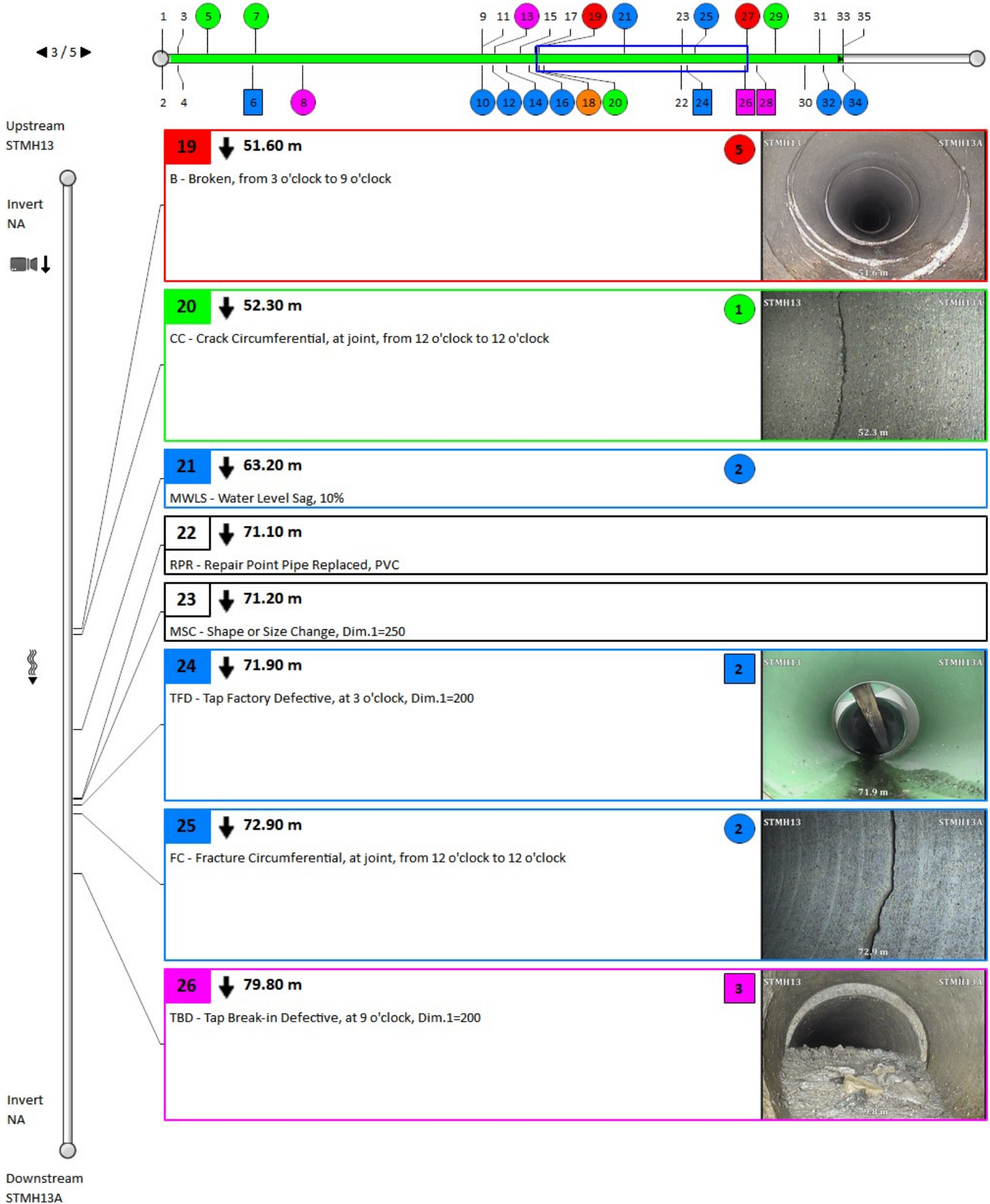
4. Pipe summary and condition details



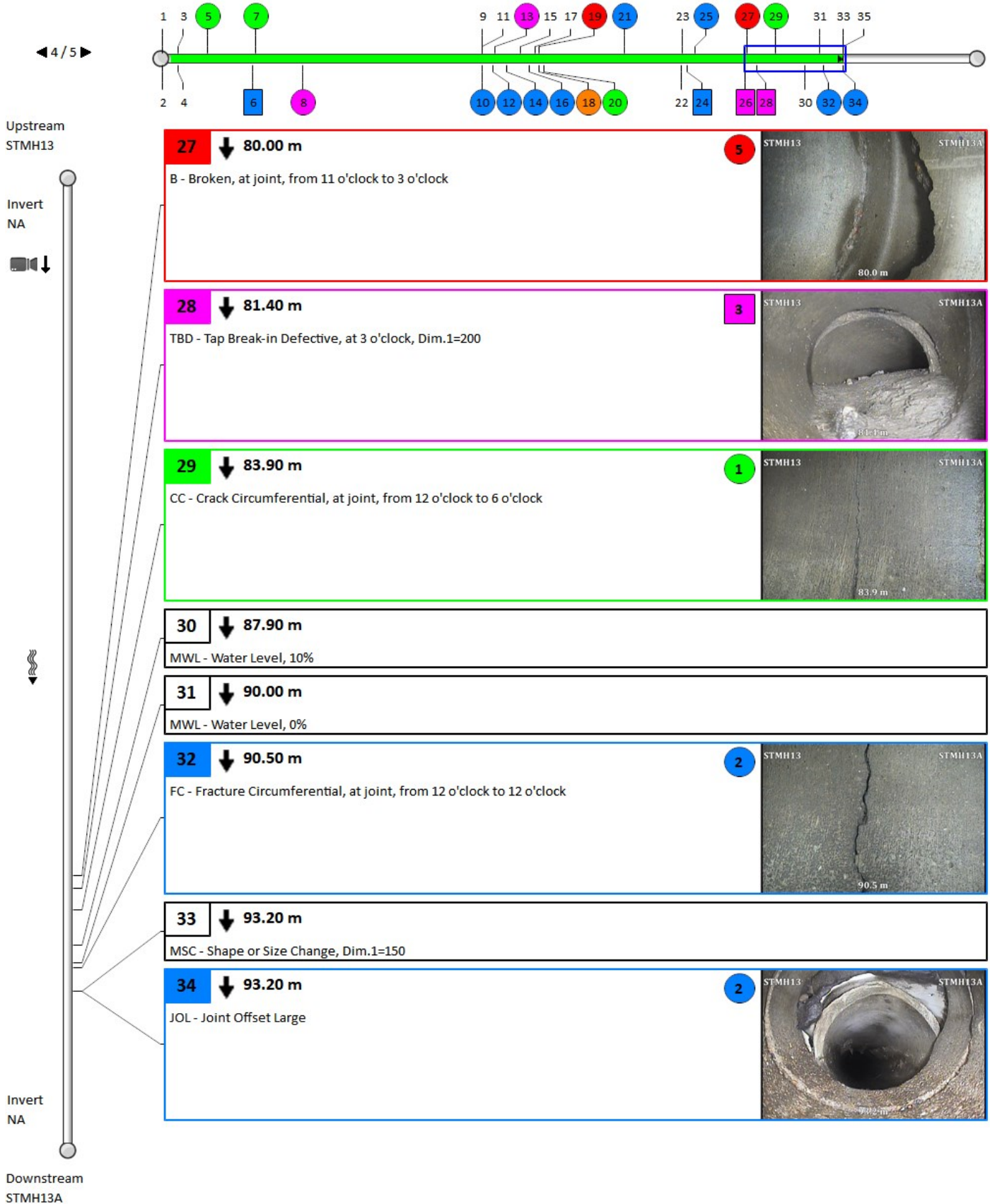
4. Pipe summary and condition details



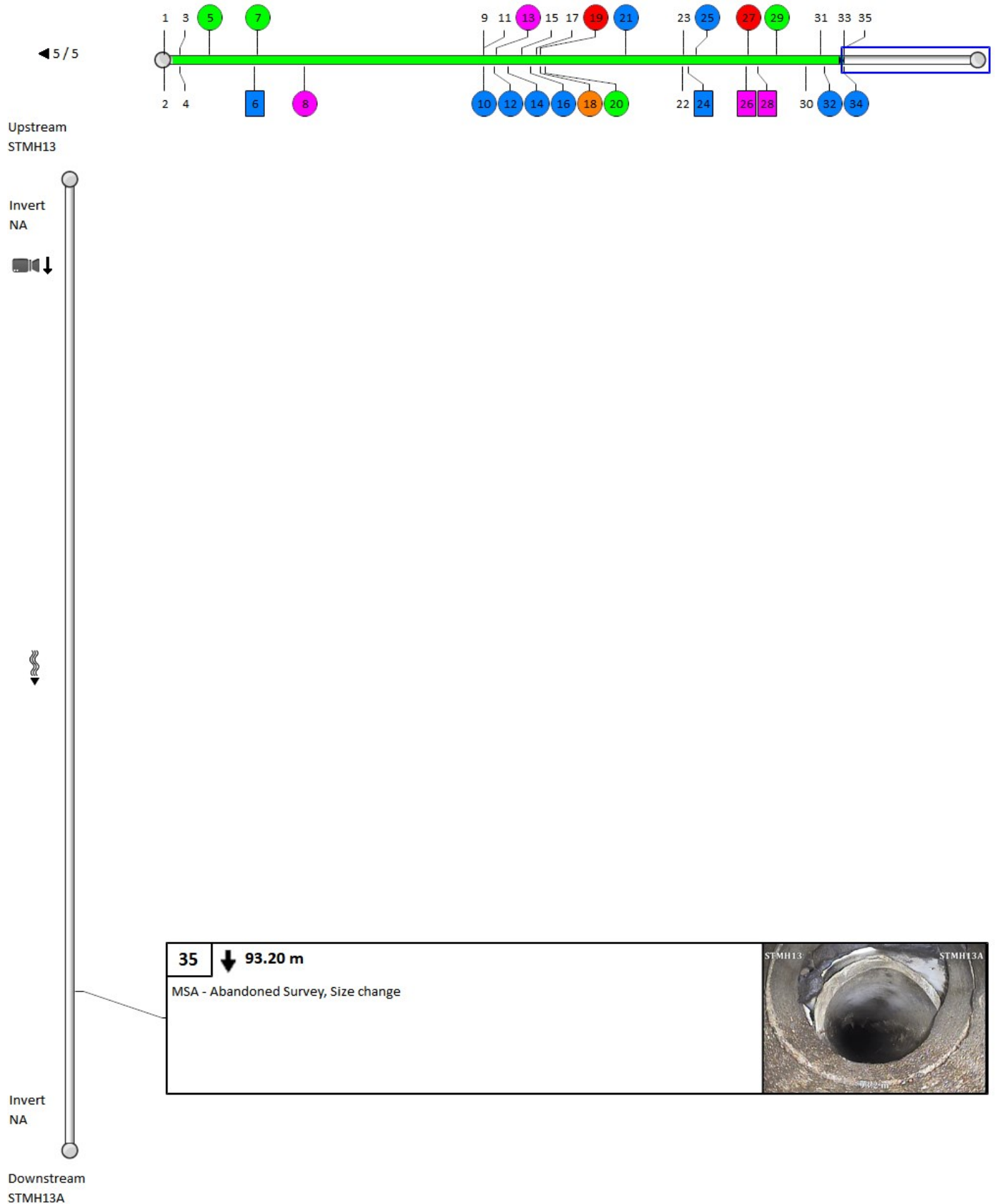
4. Pipe summary and condition details



4. Pipe summary and condition details



4. Pipe summary and condition details



4. Pipe summary and condition details

Pipe identification

Pipe: STMH13A STMH14	Direction of inspection: STMH14 --> STMH13A
Direction of flow: STMH13A --> STMH14	Direction: Against flow

Pipe location

Road: 200 Lees Ave.	<u>UPSTREAM</u>	<u>DOWNSTREAM</u>
Crossroad:	Easting (X):	Easting (X):
Drainage Area:	Northing (Y):	Northing (Y):
City: Ottawa	Elevation (Z):	Elevation (Z):
Location:	GPS Accuracy:	
Owner: Unknown	Coordinate System:	
Road segment:	Vertical Datum:	

Pipe characteristics

Sewer Use: Stormwater	Inspected length: 26.5
Height: 300	Total length: 26.5
Width:	Rim/Inv.:
Shape: Circular	Grade/Inv.:
Material: Concrete Segments (unbolted)	Rim/Grade:
Lining:	Rim/Inv.:
Joint length: 2	Grade/Inv.:
Year laid:	Rim/Grade:
Year renewed:	Sewer category:

Additional details

Inspection standard: PACP 6.0	Location details:
Date: 20/10/2021 2:32 PM	Surveyed by: Derek Jessup
Project Number: 200 Lees Ave.	Certificate #: U06180703002192
Customer: PCL Construction	Pre-Cleaning: Jetting
PO number:	Date cleaned:
Work order: 109226	Unit of measurement: Metric
Purpose:	Media label: 109226ST1
Weather: Dry	Sheet #:
Flow control: Not Controlled	

Structural rating

O&M rating

Overall rating

Peak: 2	Peak: 4	Peak: 4
Quick rating: 2100	Quick rating: 4200	Quick rating: 4221
Score: 2	Score: 8	Score: 10
Index: 2	Index: 4	Index: 3.3

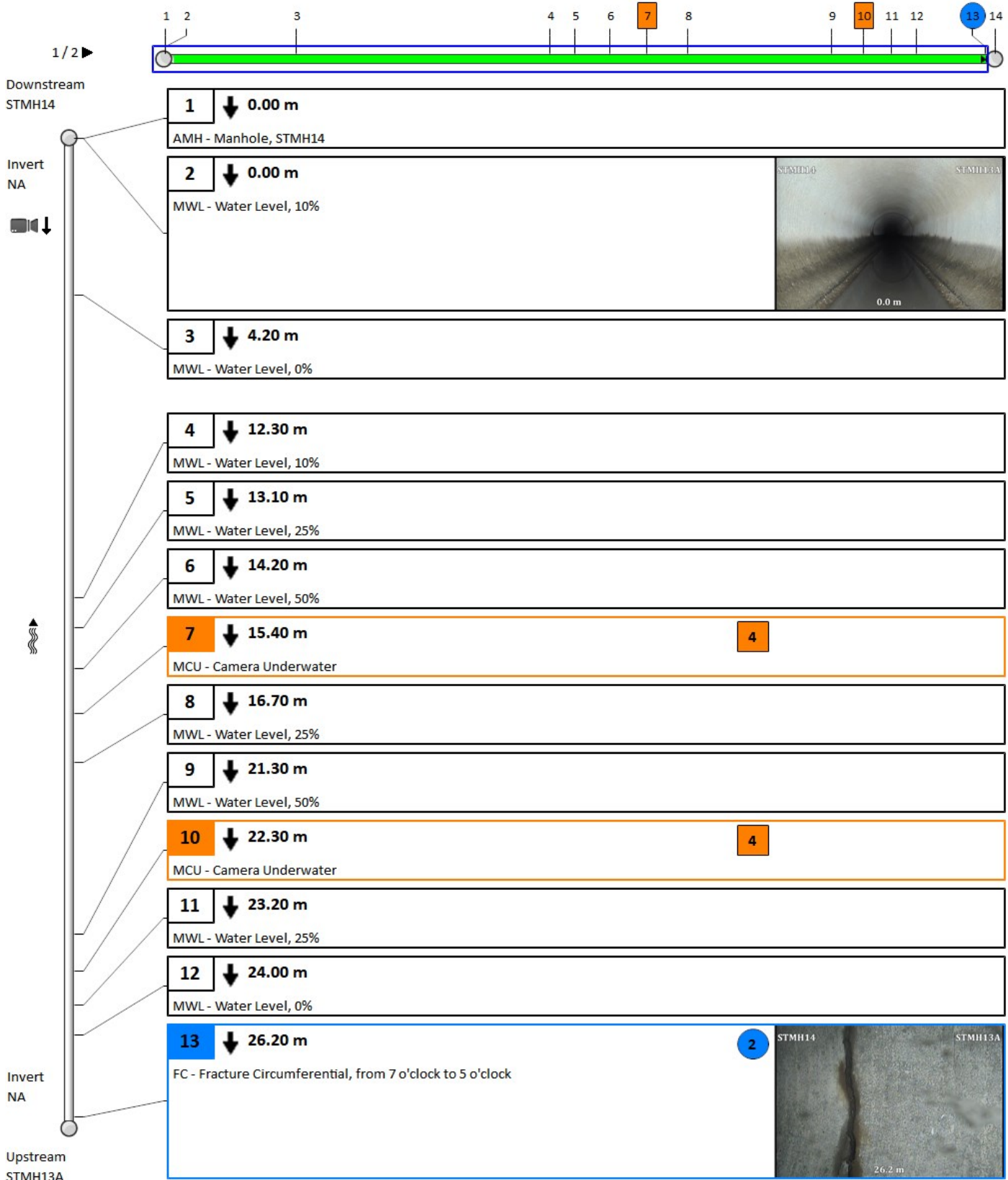
Additional information

--

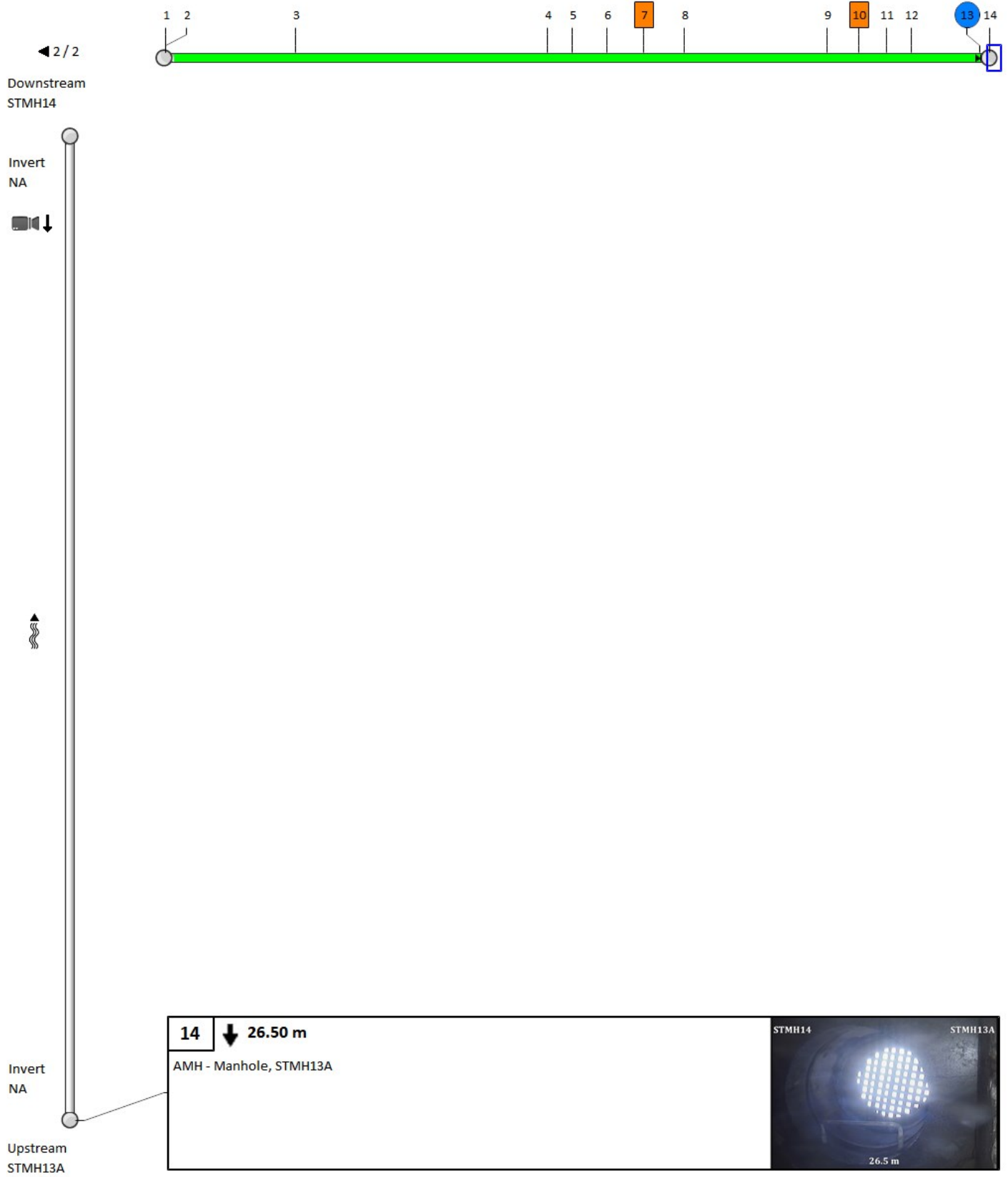
Other information

Report ID: 109226ST1	Information 6:
Information 2:	Information 7:
Information 3:	Information 8:
Information 4:	Information 9:
Information 5:	Information 10:

4. Pipe summary and condition details



4. Pipe summary and condition details



4. Pipe summary and condition details

Pipe identification

Pipe: STMH14 STMH15	Direction of inspection: STMH14 --> STORMCEPTOR
Direction of flow: STMH14 --> STORMCEPTOR	Direction: Direction of flow

Pipe location

Road: 200 Lees Ave.	<u>UPSTREAM</u>	<u>DOWNSTREAM</u>
Crossroad:	Easting (X):	Easting (X):
Drainage Area:	Northing (Y):	Northing (Y):
City: Ottawa	Elevation (Z):	Elevation (Z):
Location:	GPS Accuracy:	
Owner: Unknown	Corrdinate System:	
Road segment:	Vertical Datum:	

Pipe characteristics

Sewer Use: Stormwater	Inspected length: 11.9
Height: 300	Total length: 13
Width:	Rim/Inv.:
Shape: Circular	Grade/Inv.:
Material: Concrete Segments (unbolted)	Rim/Grade:
Lining:	Rim/Inv.:
Joint length: 2	Grade/Inv.:
Year laid:	Rim/Grade:
Year renewed:	Sewer category:

Additional details

Inspection standard: PACP 6.0	Location details:
Date: 20/10/2021 2:47 PM	Surveyed by: Derek Jessup
Project Number: 200 Lees Ave.	Certificate #: U06180703002192
Customer: PCL Construction	Pre-Cleaning: Jetting
PO number:	Date cleaned:
Work order: 109226	Unit of measurement: Metric
Purpose:	Media label: 109226ST1
Weather: Dry	Sheet #:
Flow control: Not Controlled	

Structural rating

O&M rating

Overall rating

Peak: 2	Peak: 0	Peak: 2
Quick rating: 2100	Quick rating: 0000	Quick rating: 2100
Score: 2	Score: 0	Score: 2
Index: 2	Index: 0	Index: 2

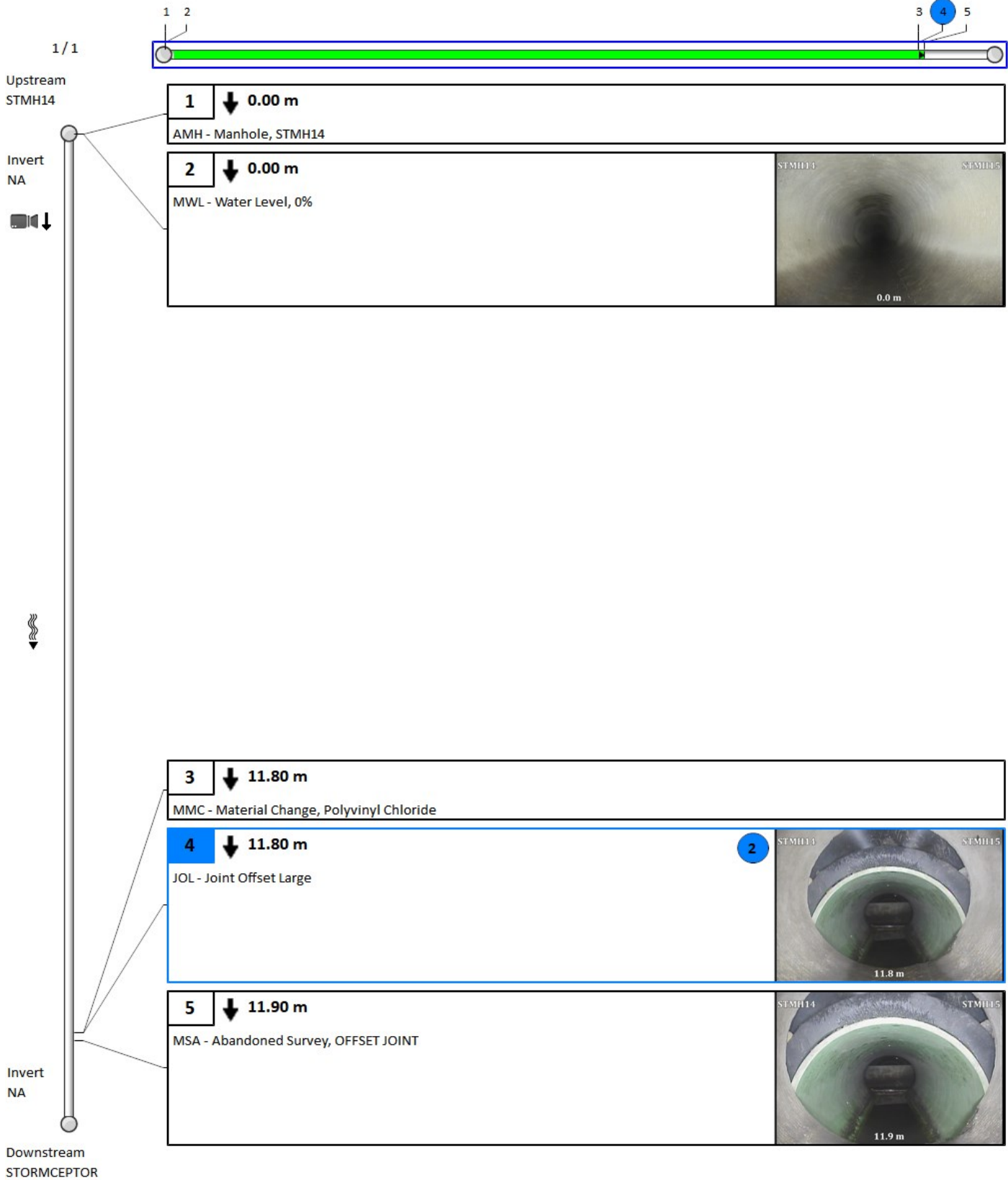
Additional information

--

Other information

Report ID: 109226ST1	Information 6:
Information 2:	Information 7:
Information 3:	Information 8:
Information 4:	Information 9:
Information 5:	Information 10:

4. Pipe summary and condition details



4. Pipe summary and condition details

Pipe identification

Pipe: STMH15 STMH16	Direction of inspection: STMH15 --> STMH16
Direction of flow: STMH15 --> STMH16	Direction: Direction of flow

Pipe location

Road: 200 Lees Ave.	<u>UPSTREAM</u>	<u>DOWNSTREAM</u>
Crossroad:	Easting (X):	Easting (X):
Drainage Area:	Northing (Y):	Northing (Y):
City: Ottawa	Elevation (Z):	Elevation (Z):
Location:	GPS Accuracy:	
Owner: Unknown	Coordinate System:	
Road segment:	Vertical Datum:	

Pipe characteristics

Sewer Use: Stormwater	Inspected length: 39.4
Height: 300	Total length: 39.4
Width:	Rim/Inv.:
Shape: Circular	Grade/Inv.:
Material: Concrete Segments (unbolted)	Rim/Grade:
Lining:	Rim/Inv.:
Joint length: 2	Grade/Inv.:
Year laid:	Rim/Grade:
Year renewed:	Sewer category:

Additional details

Inspection standard: PACP 6.0	Location details:
Date: 20/10/2021 3:05 PM	Surveyed by: Derek Jessup
Project Number: 200 Lees Ave.	Certificate #: U06180703002192
Customer: PCL Construction	Pre-Cleaning: Jetting
PO number:	Date cleaned:
Work order: 109226	Unit of measurement: Metric
Purpose:	Media label: 109226ST1
Weather: Dry	Sheet #:
Flow control: Not Controlled	

Structural rating

O&M rating

Overall rating

Peak: 5	Peak: 2	Peak: 5
Quick rating: 5131	Quick rating: 2400	Quick rating: 5131
Score: 17	Score: 8	Score: 25
Index: 1.9	Index: 2	Index: 1.9

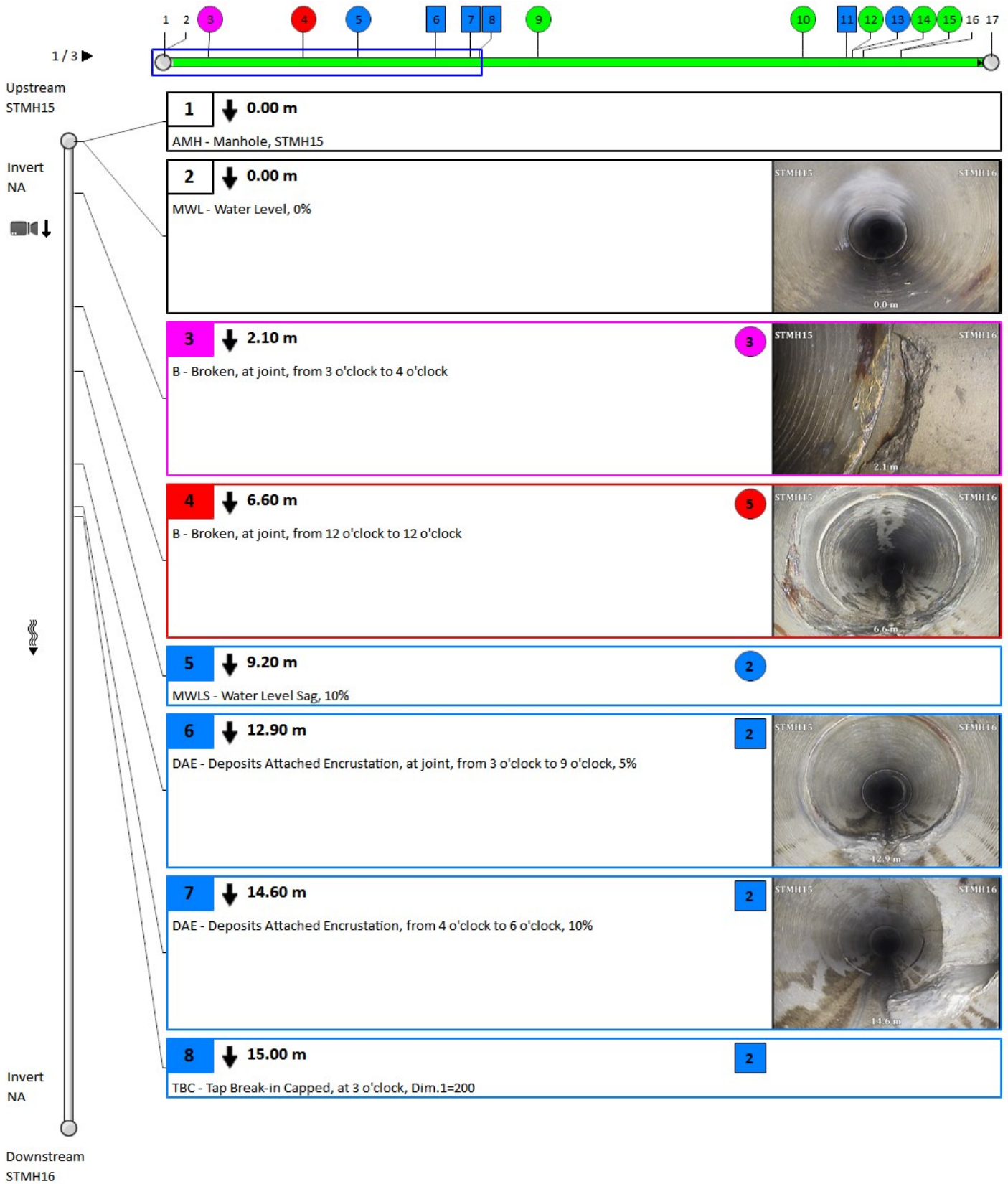
Additional information

--

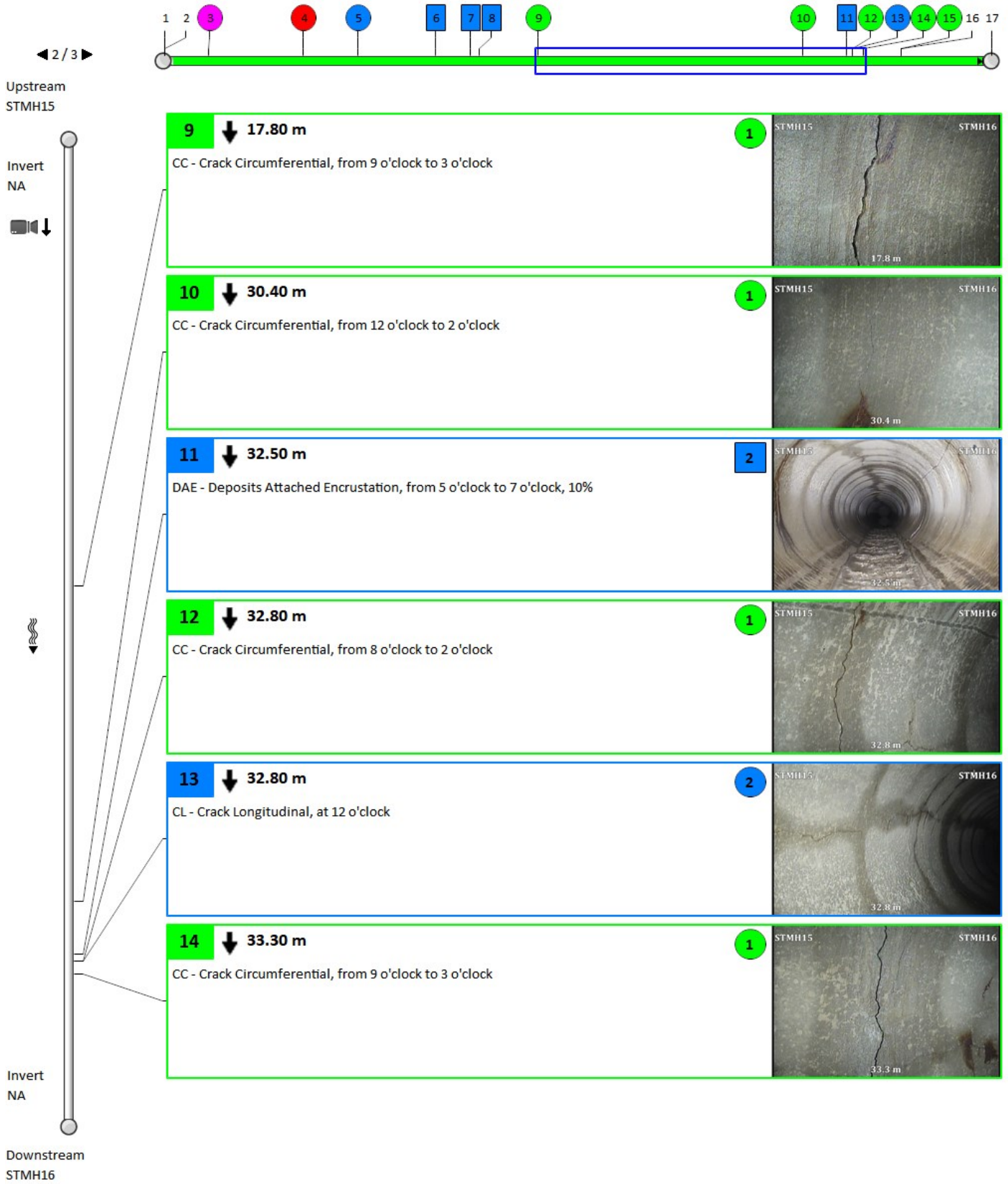
Other information

Report ID: 109226ST1	Information 6:
Information 2:	Information 7:
Information 3:	Information 8:
Information 4:	Information 9:
Information 5:	Information 10:

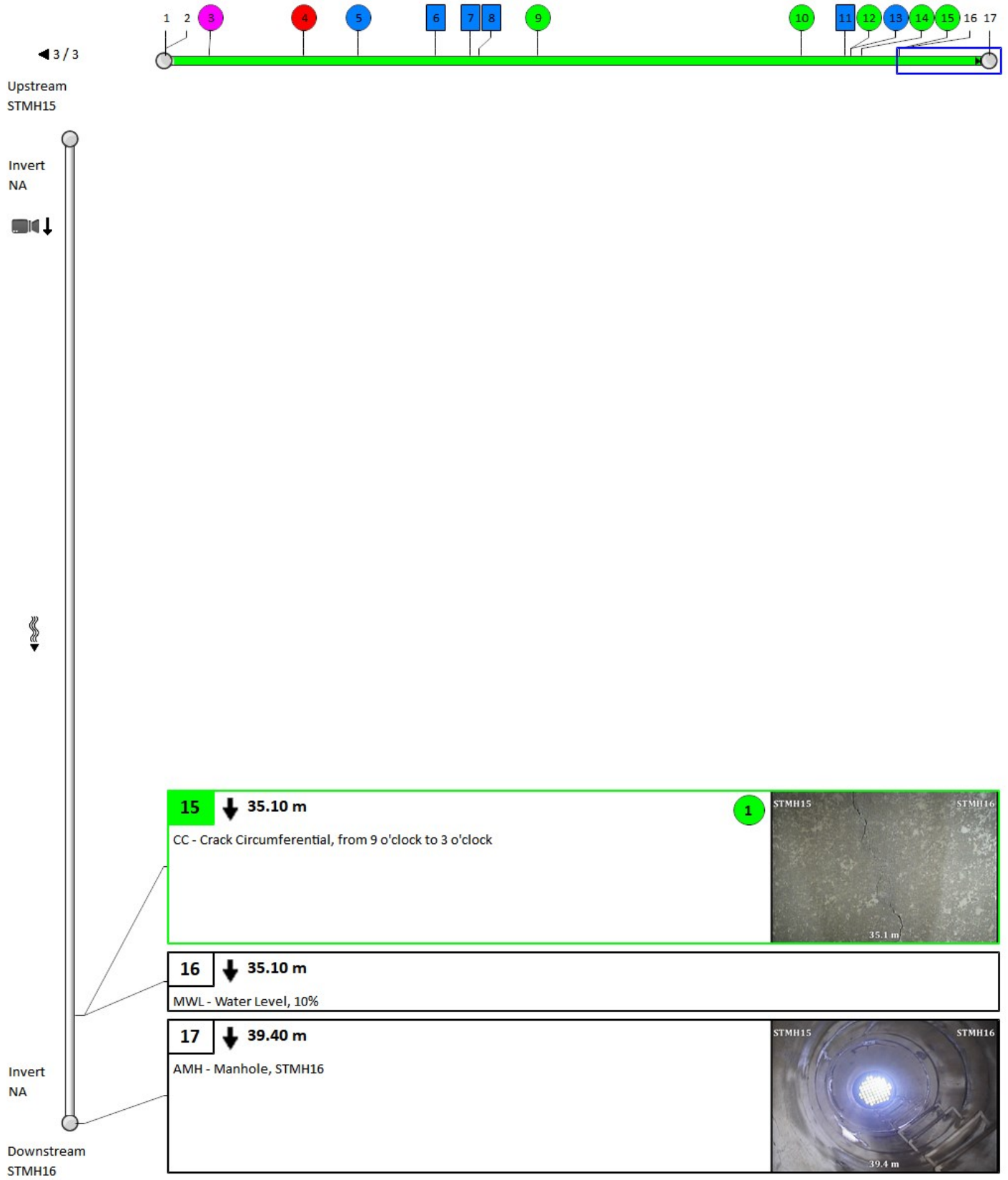
4. Pipe summary and condition details



4. Pipe summary and condition details



4. Pipe summary and condition details



4. Pipe summary and condition details

Pipe identification

Pipe: STMH16 STMH17	Direction of inspection: STMH16 --> STMH17
Direction of flow: STMH16 --> STMH17	Direction: Direction of flow

Pipe location

Road: 200 Lees Ave.	<u>UPSTREAM</u>	<u>DOWNSTREAM</u>
Crossroad:	Easting (X):	Easting (X):
Drainage Area:	Northing (Y):	Northing (Y):
City: Ottawa	Elevation (Z):	Elevation (Z):
Location:	GPS Accuracy:	
Owner: Unknown	Coordinate System:	
Road segment:	Vertical Datum:	

Pipe characteristics

Sewer Use: Stormwater	Inspected length: 33
Height: 450	Total length: 33
Width:	Rim/Inv.:
Shape: Circular	Grade/Inv.:
Material: Concrete Segments (unbolted)	Rim/Grade:
Lining:	Rim/Inv.:
Joint length: 2	Grade/Inv.:
Year laid:	Rim/Grade:
Year renewed:	Sewer category:

Additional details

Inspection standard: PACP 6.0	Location details:
Date: 20/10/2021 3:27 PM	Surveyed by: Derek Jessup
Project Number: 200 Lees Ave.	Certificate #: U06180703002192
Customer: PCL Construction	Pre-Cleaning: Jetting
PO number:	Date cleaned:
Work order: 109226	Unit of measurement: Metric
Purpose:	Media label: 109226ST1
Weather: Dry	Sheet #:
Flow control: Not Controlled	

Structural rating

O&M rating

Overall rating

Peak: 3	Peak: 2	Peak: 3
Quick rating: 3123	Quick rating: 2400	Quick rating: 3127
Score: 9	Score: 8	Score: 17
Index: 2.2	Index: 2	Index: 2.1

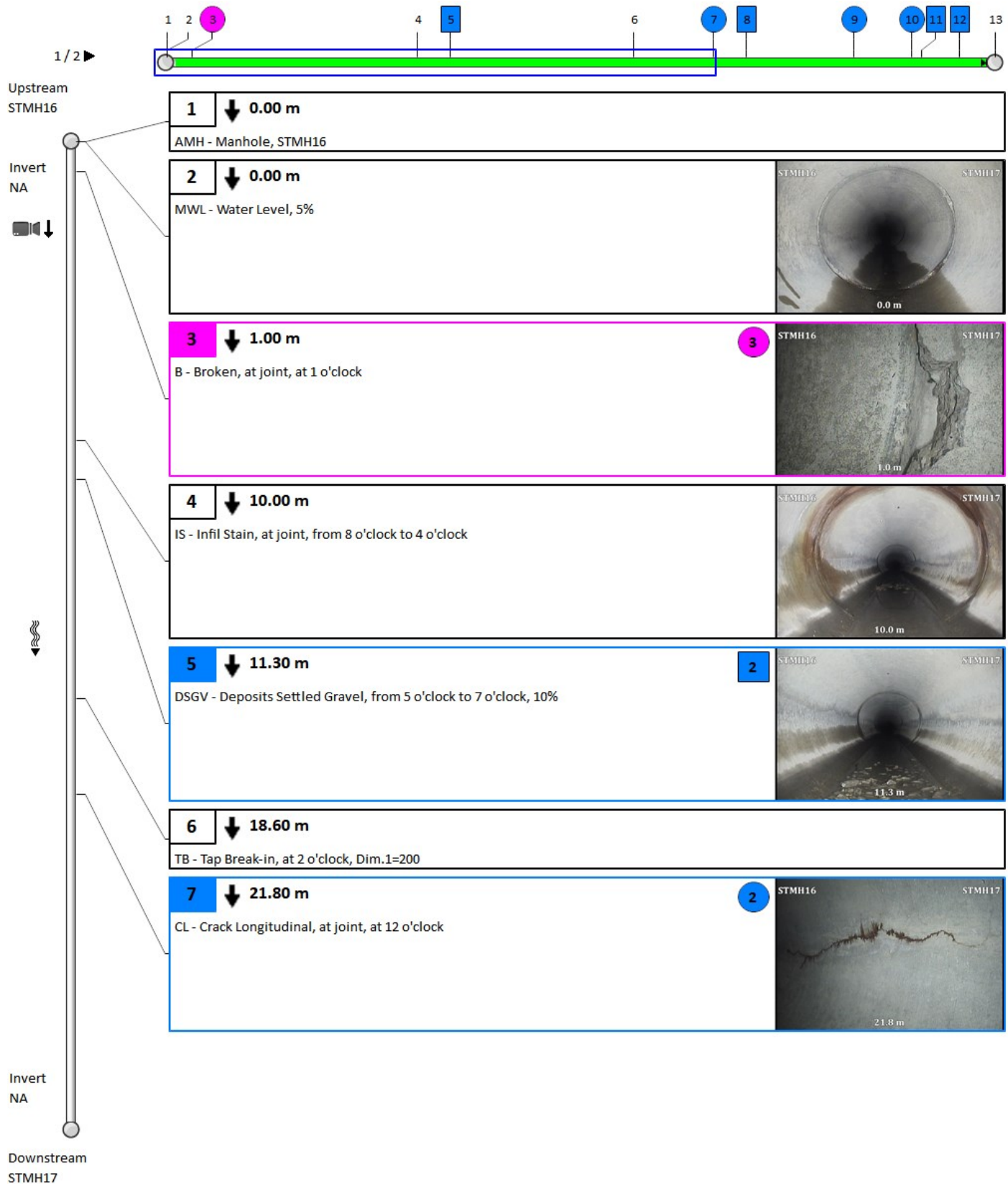
Additional information

--

Other information

Report ID: 109226ST1	Information 6:
Information 2:	Information 7:
Information 3:	Information 8:
Information 4:	Information 9:
Information 5:	Information 10:

4. Pipe summary and condition details



4. Pipe summary and condition details



4. Pipe summary and condition details

Pipe identification

Pipe: STMH17 STMH19	Direction of inspection: STMH19 --> STMH17
Direction of flow: STMH17 --> STMH19	Direction: Against flow

Pipe location

Road: 200 Lees Ave.	<u>UPSTREAM</u>	<u>DOWNSTREAM</u>
Crossroad:	Easting (X):	Easting (X):
Drainage Area:	Northing (Y):	Northing (Y):
City: Ottawa	Elevation (Z):	Elevation (Z):
Location:	GPS Accuracy:	
Owner: Unknown	Coordinate System:	
Road segment:	Vertical Datum:	

Pipe characteristics

Sewer Use: Stormwater	Inspected length: 42.7
Height: 500	Total length: 42.7
Width:	Rim/Inv.:
Shape: Circular	Grade/Inv.:
Material: Concrete Segments (unbolted)	Rim/Grade:
Lining:	Rim/Inv.:
Joint length: 2	Grade/Inv.:
Year laid:	Rim/Grade:
Year renewed:	Sewer category:

Additional details

Inspection standard: PACP 6.0	Location details:
Date: 21/10/2021 11:04 AM	Surveyed by: Derek Jessup
Project Number: 200 Lees Ave.	Certificate #: U06180703002192
Customer: PCL Construction	Pre-Cleaning: Jetting
PO number:	Date cleaned:
Work order: 109226	Unit of measurement: Metric
Purpose:	Media label: 109226ST1
Weather: Light Rain	Sheet #:
Flow control: Not Controlled	

Structural rating

O&M rating

Overall rating

Peak: 2	Peak: 0	Peak: 2
Quick rating: 2A00	Quick rating: 0000	Quick rating: 2A00
Score: 20	Score: 0	Score: 20
Index: 2	Index: 0	Index: 2

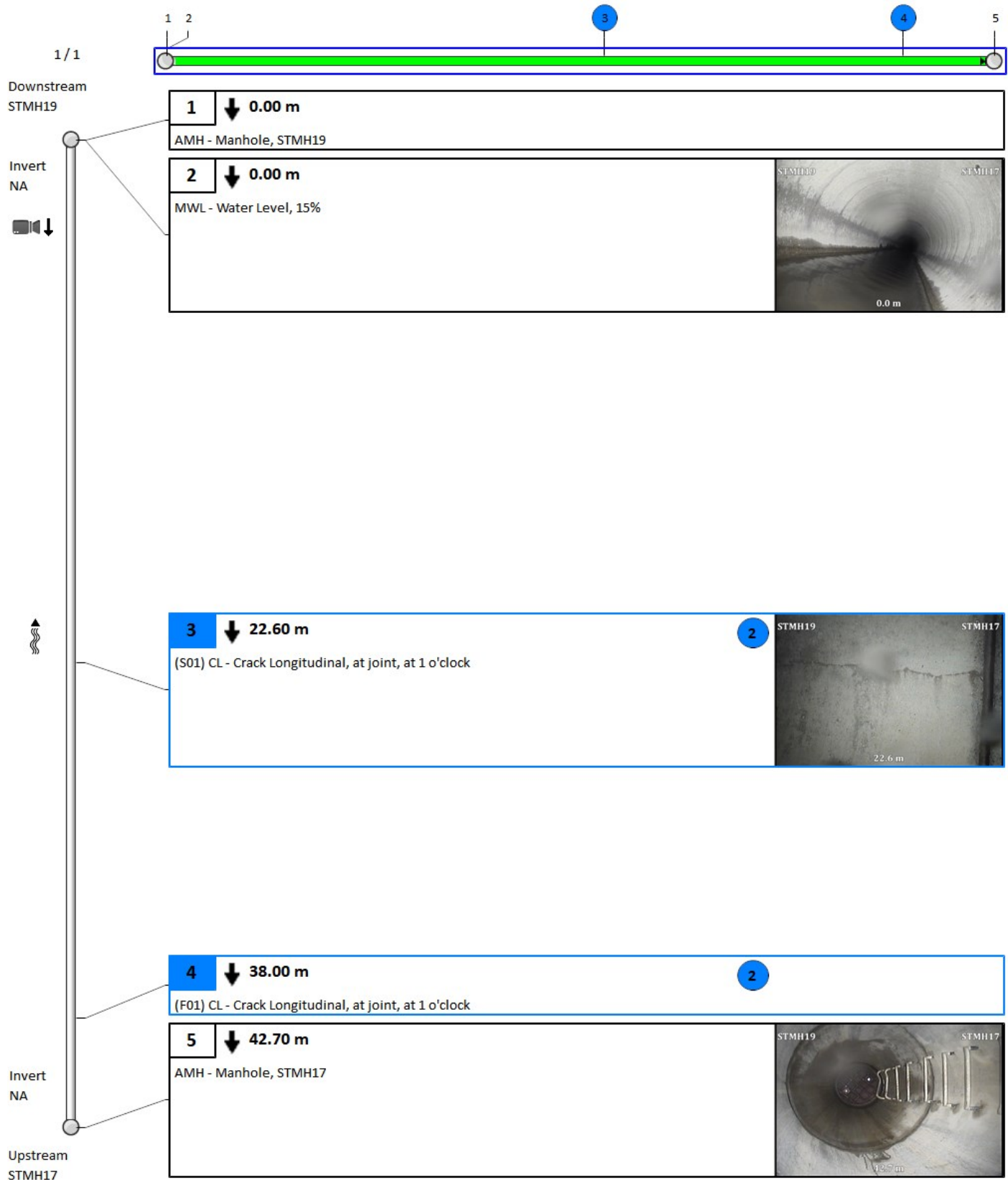
Additional information

--

Other information

Report ID: 109226ST1	Information 6:
Information 2:	Information 7:
Information 3:	Information 8:
Information 4:	Information 9:
Information 5:	Information 10:

4. Pipe summary and condition details



4. Pipe summary and condition details

Pipe identification

Pipe: STMH19 STMH20	Direction of inspection: STMH20 --> STMH19
Direction of flow: STMH19 --> STMH20	Direction: Against flow

Pipe location

Road: 200 Lees Ave.	<u>UPSTREAM</u>	<u>DOWNSTREAM</u>
Crossroad:	Easting (X):	Easting (X):
Drainage Area:	Northing (Y):	Northing (Y):
City: Ottawa	Elevation (Z):	Elevation (Z):
Location:	GPS Accuracy:	
Owner: Unknown	Coordinate System:	
Road segment:	Vertical Datum:	

Pipe characteristics

Sewer Use: Stormwater	Inspected length: 62
Height: 500	Total length: 62
Width:	Rim/Inv.:
Shape: Circular	Grade/Inv.:
Material: Concrete Segments (unbolted)	Rim/Grade:
Lining:	Rim/Inv.:
Joint length: 2	Grade/Inv.:
Year laid:	Rim/Grade:
Year renewed:	Sewer category:

Additional details

Inspection standard: PACP 6.0	Location details:
Date: 21/10/2021 10:58 AM	Surveyed by: Derek Jessup
Project Number: 200 Lees Ave.	Certificate #: U06180703002192
Customer: PCL Construction	Pre-Cleaning: Jetting
PO number:	Date cleaned:
Work order: 109226	Unit of measurement: Metric
Purpose:	Media label: 109226ST1
Weather: Light Rain	Sheet #:
Flow control: Not Controlled	

Structural rating

O&M rating

Overall rating

Peak: 3	Peak: 0	Peak: 3
Quick rating: 312E	Quick rating: 0000	Quick rating: 312E
Score: 67	Score: 0	Score: 67
Index: 2	Index: 0	Index: 2

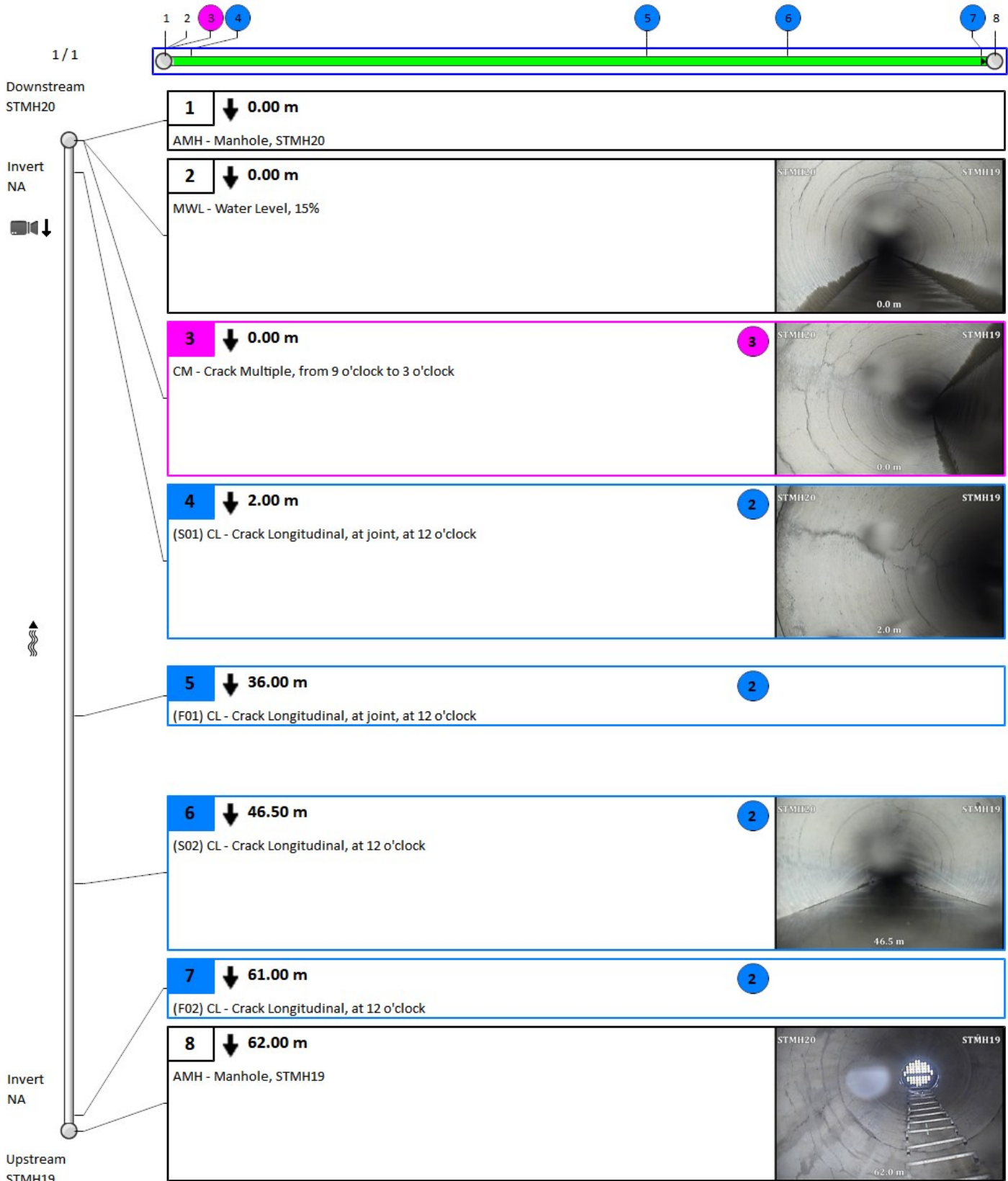
Additional information

--

Other information

Report ID: 109226ST1	Information 6:
Information 2:	Information 7:
Information 3:	Information 8:
Information 4:	Information 9:
Information 5:	Information 10:

4. Pipe summary and condition details



4. Pipe summary and condition details

Pipe identification

Pipe: STMH20 STMH21	Direction of inspection: STMH20 --> STMH21
Direction of flow: STMH20 --> STMH21	Direction: Direction of flow

Pipe location

Road: 200 Lees Ave.	<u>UPSTREAM</u>	<u>DOWNSTREAM</u>
Crossroad:	Easting (X):	Easting (X):
Drainage Area:	Northing (Y):	Northing (Y):
City: Ottawa	Elevation (Z):	Elevation (Z):
Location:	GPS Accuracy:	
Owner: Unknown	Coordinate System:	
Road segment:	Vertical Datum:	

Pipe characteristics

Sewer Use: Stormwater	Inspected length: 11.8
Height: 500	Total length: 11.8
Width:	Rim/Inv.:
Shape: Circular	Grade/Inv.:
Material: Concrete Segments (unbolted)	Rim/Grade:
Lining:	Rim/Inv.:
Joint length: 2	Grade/Inv.:
Year laid:	Rim/Grade:
Year renewed:	Sewer category:

Additional details

Inspection standard: PACP 6.0	Location details:
Date: 21/10/2021 10:42 AM	Surveyed by: Derek Jessup
Project Number: 200 Lees Ave.	Certificate #: U06180703002192
Customer: PCL Construction	Pre-Cleaning: Jetting
PO number:	Date cleaned:
Work order: 109226	Unit of measurement: Metric
Purpose:	Media label: 109226ST1
Weather: Light Rain	Sheet #:
Flow control: Not Controlled	

Structural rating

O&M rating

Overall rating

Peak: 3	Peak: 0	Peak: 3
Quick rating: 3124	Quick rating: 0000	Quick rating: 3124
Score: 11	Score: 0	Score: 11
Index: 2.2	Index: 0	Index: 2.2

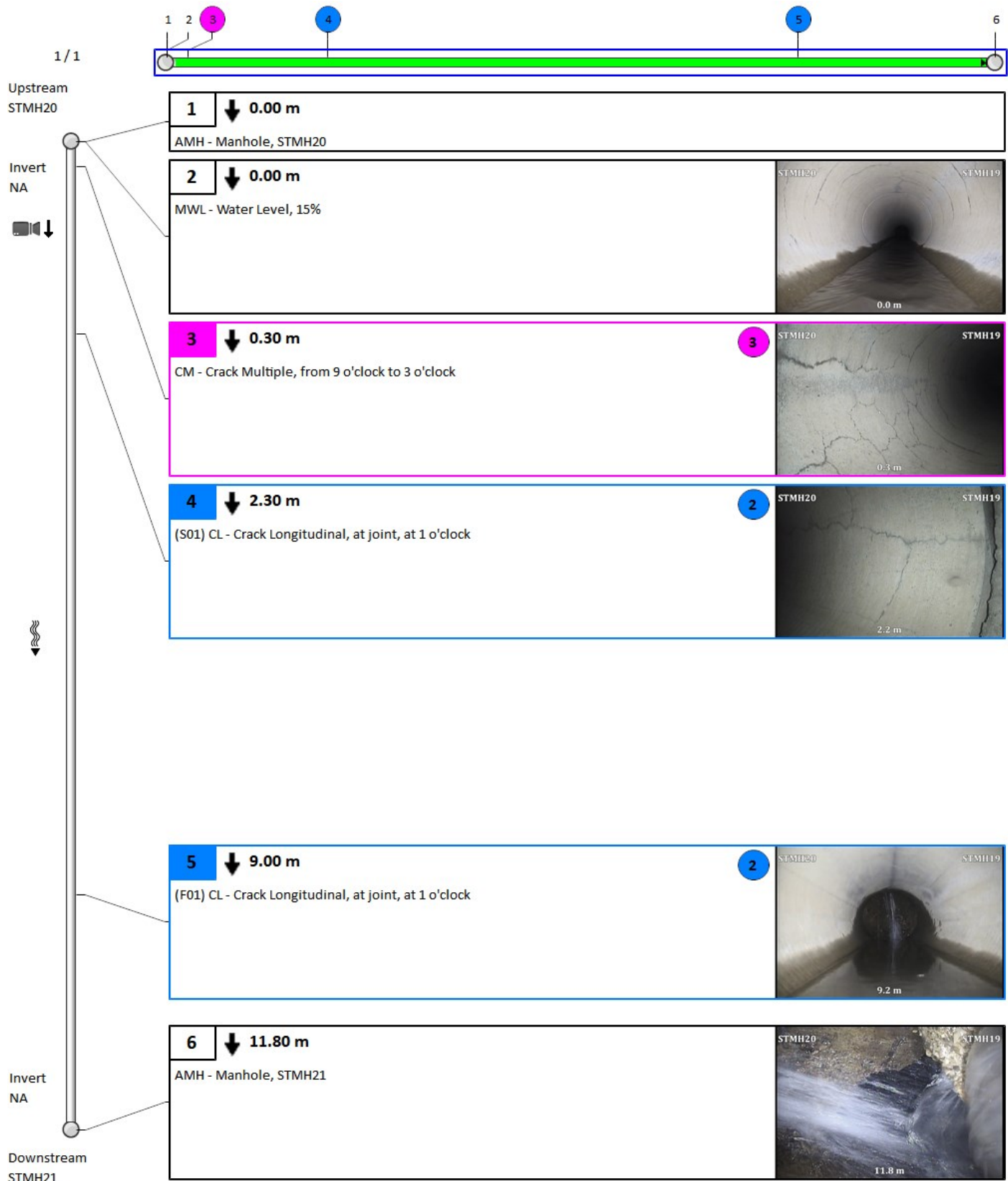
Additional information

--

Other information

Report ID: 109226ST1	Information 6:
Information 2:	Information 7:
Information 3:	Information 8:
Information 4:	Information 9:
Information 5:	Information 10:

4. Pipe summary and condition details



4. Pipe summary and condition details

Pipe identification

Pipe: STMH22 STMH21	Direction of inspection: STMH22 --> STMH21
Direction of flow: STMH22 --> STMH21	Direction: Direction of flow

Pipe location

Road: 200 Lees Ave.	<u>UPSTREAM</u>	<u>DOWNSTREAM</u>
Crossroad:	Easting (X):	Easting (X):
Drainage Area:	Northing (Y):	Northing (Y):
City: Ottawa	Elevation (Z):	Elevation (Z):
Location:	GPS Accuracy:	
Owner: Unknown	Coordinate System:	
Road segment:	Vertical Datum:	

Pipe characteristics

Sewer Use: Stormwater	Inspected length: 7.6
Height: 600	Total length: 7.6
Width:	Rim/Inv.:
Shape: Circular	Grade/Inv.:
Material: Concrete Segments (unbolted)	Rim/Grade:
Lining:	Rim/Inv.:
Joint length: 2	Grade/Inv.:
Year laid:	Rim/Grade:
Year renewed:	Sewer category:

Additional details

Inspection standard: PACP 6.0	Location details:
Date: 21/10/2021 10:00 AM	Surveyed by: Derek Jessup
Project Number: 200 Lees Ave.	Certificate #: U06180703002192
Customer: PCL Construction	Pre-Cleaning: Jetting
PO number:	Date cleaned:
Work order: 109226	Unit of measurement: Metric
Purpose:	Media label: 109226ST1
Weather: Light Rain	Sheet #:
Flow control: Not Controlled	

Structural rating

O&M rating

Overall rating

Peak: 3	Peak: 0	Peak: 3
Quick rating: 3223	Quick rating: 0000	Quick rating: 3223
Score: 12	Score: 0	Score: 12
Index: 2.4	Index: 0	Index: 2.4

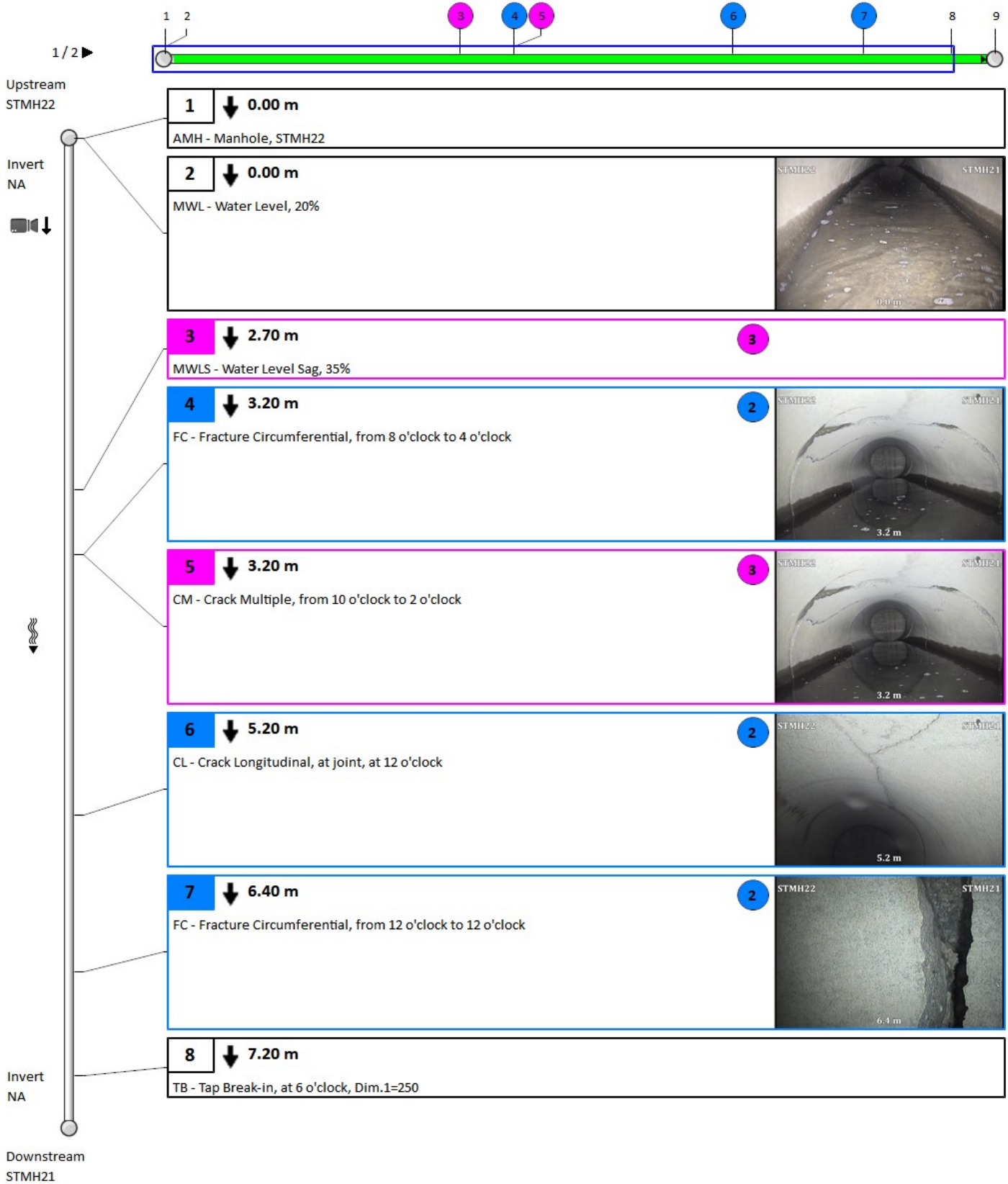
Additional information

--

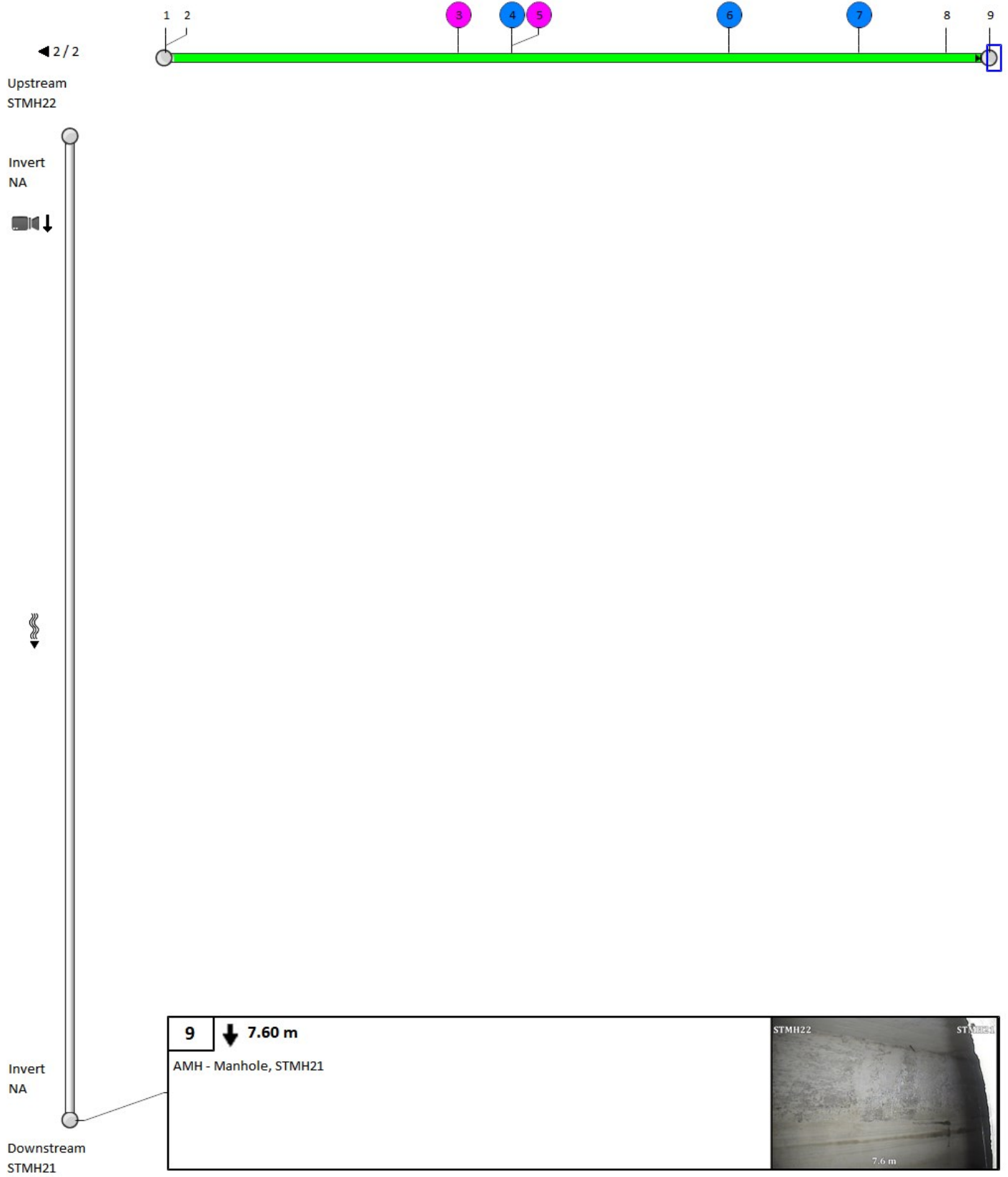
Other information

Report ID: 109226ST1	Information 6:
Information 2:	Information 7:
Information 3:	Information 8:
Information 4:	Information 9:
Information 5:	Information 10:

4. Pipe summary and condition details



4. Pipe summary and condition details



4. Pipe summary and condition details

Pipe identification

Pipe: STORMCEPTOR STMH15	Direction of inspection: STMH15 --> STORMCEPTOR
Direction of flow: STORMCEPTOR --> STMH15	Direction: Against flow

Pipe location

Road: 200 Lees Ave.	<u>UPSTREAM</u>	<u>DOWNSTREAM</u>
Crossroad:	Easting (X):	Easting (X):
Drainage Area:	Northing (Y):	Northing (Y):
City: Ottawa	Elevation (Z):	Elevation (Z):
Location:	GPS Accuracy:	
Owner: Unknown	Corrdinate System:	
Road segment:	Vertical Datum:	

Pipe characteristics

Sewer Use: Stormwater	Inspected length: 3.4
Height: 300	Total length: 3.4
Width:	Rim/Inv.:
Shape: Circular	Grade/Inv.:
Material: Concrete Segments (unbolted)	Rim/Grade:
Lining:	Rim/Inv.:
Joint length: 2	Grade/Inv.:
Year laid:	Rim/Grade:
Year renewed:	Sewer category:

Additional details

Inspection standard: PACP 6.0	Location details:
Date: 20/10/2021 3:02 PM	Surveyed by: Derek Jessup
Project Number: 200 Lees Ave.	Certificate #: U06180703002192
Customer: PCL Construction	Pre-Cleaning: Jetting
PO number:	Date cleaned:
Work order: 109226	Unit of measurement: Metric
Purpose:	Media label: 109226ST1
Weather: Dry	Sheet #:
Flow control: Not Controlled	

Structural rating

O&M rating

Overall rating

Peak: 0	Peak: 0	Peak: 0
Quick rating: 0000	Quick rating: 0000	Quick rating: 0000
Score: 0	Score: 0	Score: 0
Index: 0	Index: 0	Index: 0

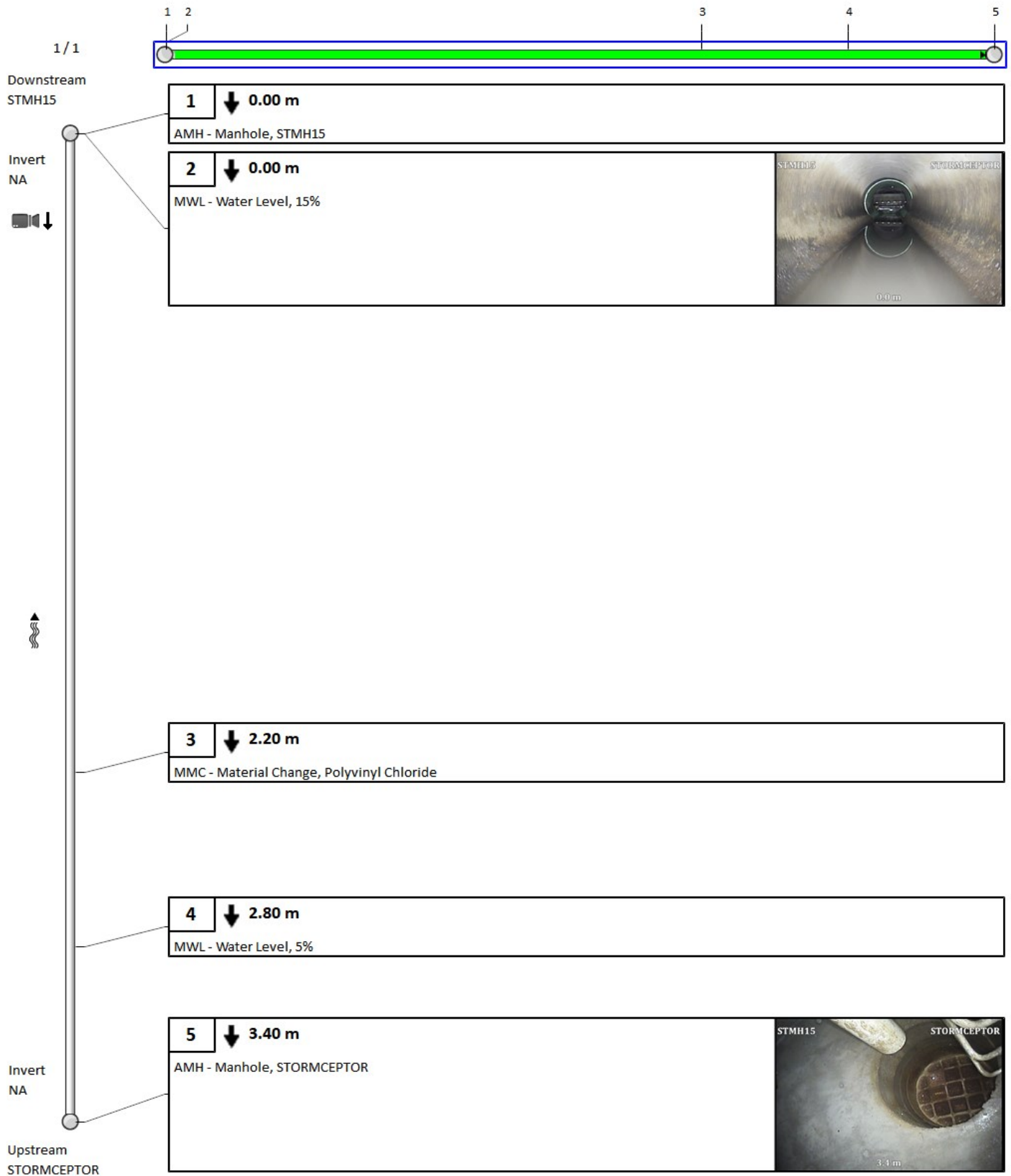
Additional information

--

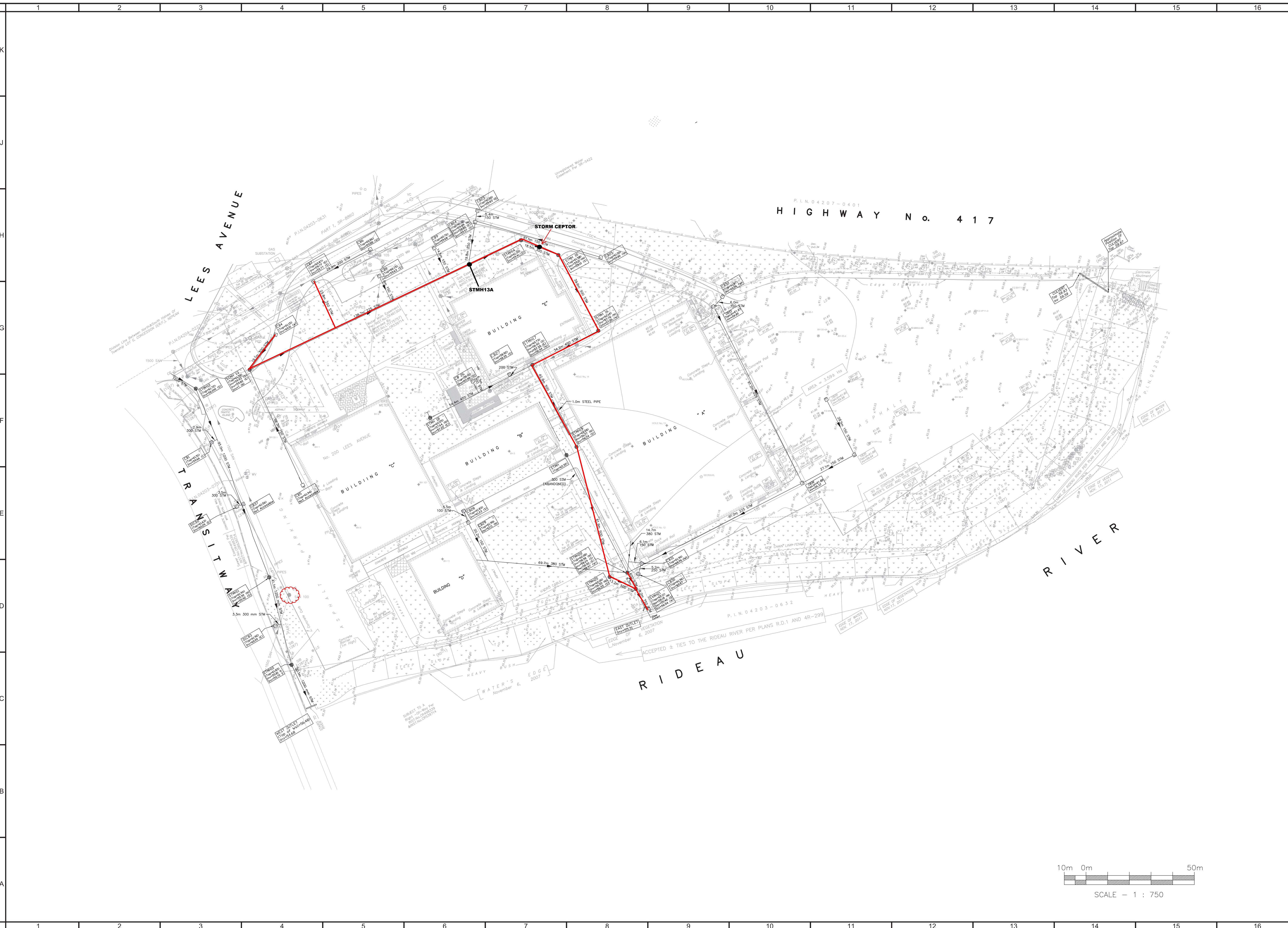
Other information

Report ID: 109226ST1	Information 6:
Information 2:	Information 7:
Information 3:	Information 8:
Information 4:	Information 9:
Information 5:	Information 10:

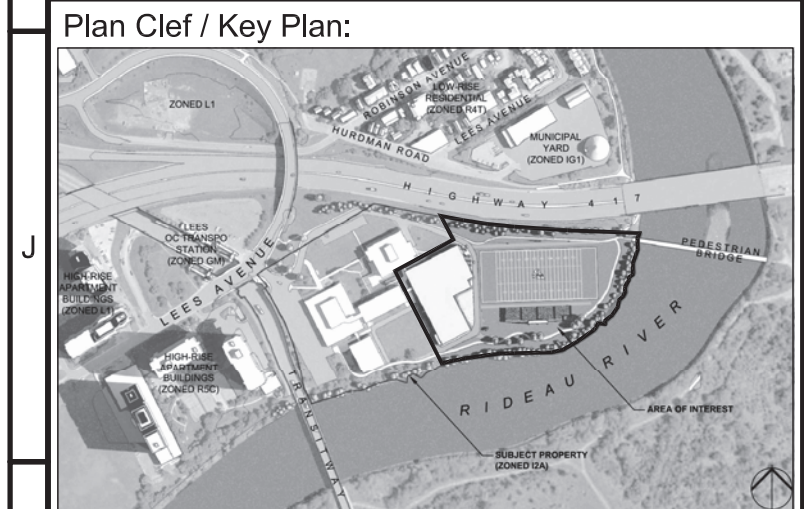
4. Pipe summary and condition details



H:\ISOE\2375\IEOBID\WGSI\Working DWGs\SPASPA Sports Field design.dwg 13/3/2012 11:25 AM



Revision Table			
REV	DATE	DESCRIPTION	BY
02	09-03-12	ISSUED PER CITY COMMENTS	S.P.
01	07-02-12	ISSUED PER CITY COMMENTS	S.P.



Notes Générales / General Notes:

Consultant:

1223 Michael Street, Suite 100, Ottawa, Ontario, Canada K1J 7T2
Tel: (613) 738-4160 Fax: (613) 739-7105



uOttawa

Service des immeubles
Physical Resources Service

uOttawa Proj. No: 101-008-060 Date (dd/mm/yyyy): 21/07/2011

Projet / Project:
BUILDING A RENOVATION/ADDITION AND OPEN AIR STADIUM PHASE 1

Concept par / Design by: PJH/SO/SP Date (dd/mm/yyyy): 25/08/2011

Dessiné par / Drawn by: PJH/JN/JT Date (dd/mm/yyyy): 14/09/2011

Vérifié par / Checked by: SO/RT Date (dd/mm/yyyy):

BLOC A
BLOCK A

200 Lees Ave.
Ottawa, ON

Dessin / Drawing:

EXISTING STORM SEWER SYSTEMS

Édifice/Bldg: Niveau/Level:

Feuille/Sheet:

Échelle/Scale: 1:750 Revision: **FIGURE 1** of/de

Vision Report © Legend

	The numbers sequentially indicate each observation that was picked up throughout the inspection period. This will allow you to sift through the pages and view the accompanying description and photos in each section. Note that when a pipe section contains too many observations, Vision© Report must hide secondary observations in order to optimize the display.*
60	A number with neither a square nor circle indicates a general observation.
	A circled number indicates a structural anomaly. The color of the circle indicates the severity of the anomaly on a scale of 1 to 5, 5 being the most severe: green=1, blue=2, magenta=3, orange=4 and red=5.
	A number in a square indicates an operation and maintenance anomaly. The color of the square indicates the severity of the anomaly on a scale of 1 to 5, 5 being the most severe: green=1, blue=2, magenta=3, orange=4 and red=5.
◀ 3 / 31 ▶	Indicates the current page number of the inspection report.
	The blue square indicates a section of the pipe; this section is covered in detail on the current page of the report.
	The green line indicates the inspected part of the pipe. The remaining white line indicates the uninspected part of the pipe.
	Indicates the hold points on the camera during an inspection.
	Indicates the hold points on the camera during the reverse inspection.
	Indicates that a reverse inspection was carried out, however the camera did not reach the initial inspection hold point. (the hold point of the initial inspection)
	Indicates that a reverse inspection was carried out and that it has joined (has arrived at) the initial inspection hold point.
401-059B 	Identifies the start manhole number. Note that this manhole is not necessarily the upstream manhole of the pipe.
401-631 	Identifies the end manhole number. Note that this manhole is not necessarily the downstream manhole of the pipe.
	A downward arrow indicates that the inspection was carried out in the direction of the current, whereas an upward arrow indicates an inspection against the current. Note that the manhole located on the upper left of the page is always the start manhole, but not necessarily the upstream manhole of the pipe.
	This camera followed by a downward arrow is located on the upper left of the vertical pipe; it indicates that an inspection was done from this manhole.
	When the second camera appears on the bottom left page it means that a reverse inspection was carried out. Information about the reverse inspection is included in the report, thereby combining both inspections.
Invert 3.40	The measurement shown under the word <Invert> indicates the measurements between the frame and the pipe captured during the inspection. This measurement is available at the top left for the start manhole and the bottom left for the end manhole. If the invert was not measured during the inspection, an <NA> mark will be displayed.
	The downward bold arrow to the right of the observation number indicates that this observation was captured during the initial inspection.
	The blank arrow pointing upwards and located to the right of the observation number indicates that this observation was taken during the reverse inspection period, thereby confirming that this report combined both inspections.
18.40 m	Located to the right of the observation number is a number identifying the observation distance in relation to the start of the pipe.
SRV - Armature visib	A full description of the observation code according to the protocol used.

*Any hidden observations are readily accessible from the database as well as in other CTSpec report templates.

** CTSpec inc. reserves the right to modify, eliminate or add to the product features described in this pamphlet without notice.

© 2012 CTSpec inc. All rights reserved.