



2111 Queenview Dr. Suite 300
Ottawa, Ontario K2B 8C2 Canada
T 613-629-2601 | F 613-629-6291 | www.wsp.com

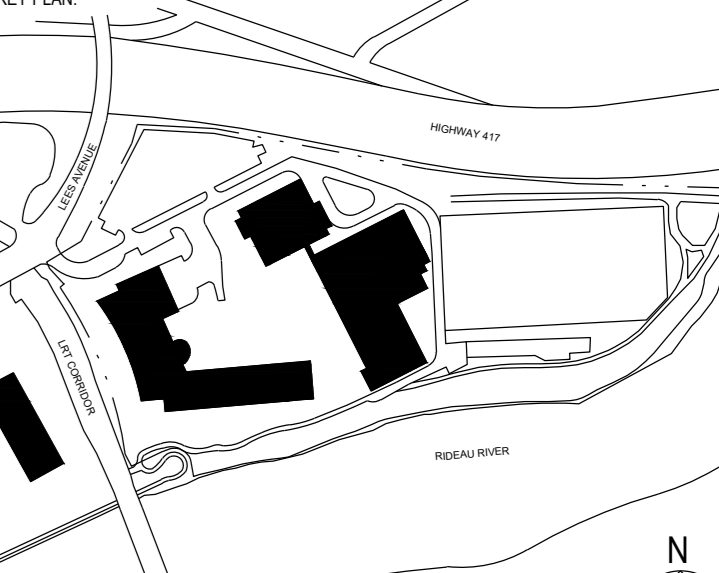


49 Augusta Drive
Ottawa, Ontario K2E 8A1 Canada
T 613-978-3381 | www.pcl.com



CLIENT REF #
PROJECT

200 LEES AVENUE
OTTAWA, ON



DECLARATION
THIS DRAWING AND DESIGN IS COPYRIGHT PROTECTED. WORK SHALL NOT BE REPRODUCED OR TRANSMITTED IN ANY FORM OR BY ANY MEANS, ELECTRONIC OR MECHANICAL, INCLUDING PHOTOCOPYING, RECORDING, OR BY ANY INFORMATION STORAGE AND RETRIEVAL SYSTEM, WITHOUT THE WRITTEN PERMISSION OF WSP ARCHITECTURE 49. ALL DIMENSIONS AND UTILITY LOCATIONS AND REPORT ALL ERRORS AND OMISSIONS PRIOR TO COMMENCEMENT OF WORK.

DESIGNED FOR: ARCHITECT

DATE: 2021-10-21
ISSUED FOR SPCA

NO.	DATE	DESCRIPTION
1	2021-10-21	ISSUED FOR SPCA

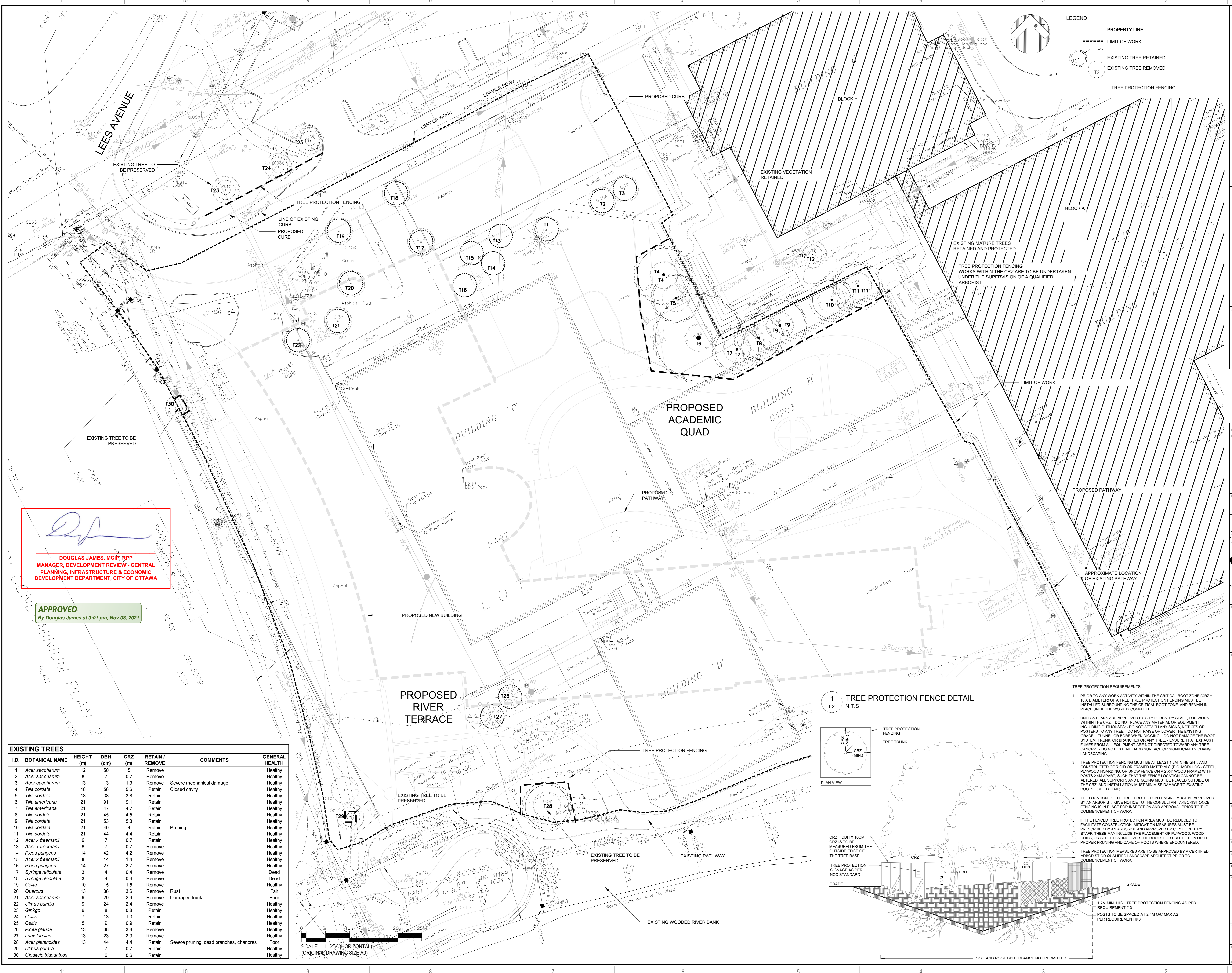
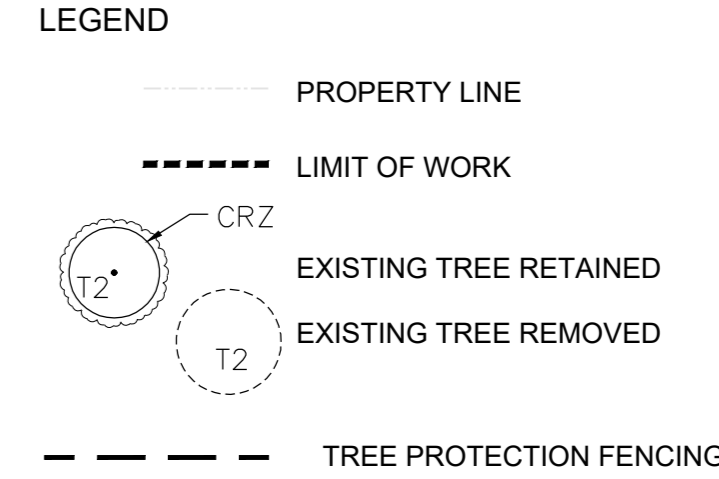
ORIGINAL SCALE: 1:250
DRAWN BY: JW
CHECKED BY: JW/JL
DATE: 2021-10-21

TITLE: LANDSCAPE ARCHITECTURE

TREE CLEARANCE AND PROTECTION

SHEET NUMBER: L2
SHEET # 1 OF 1

ISSUED FOR SPCA
DATE: 2021-08-28

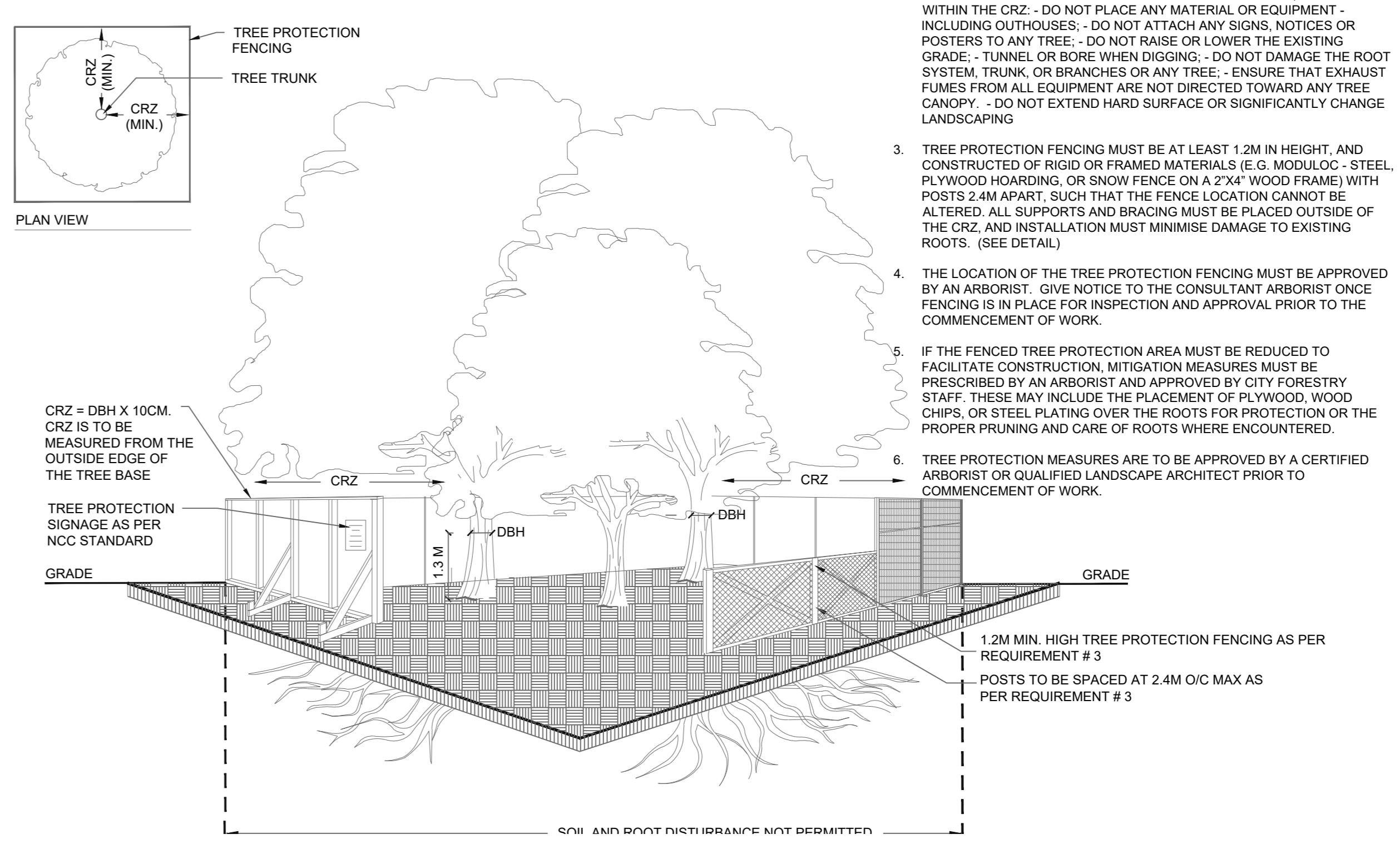


[Signature]
DOUGLAS JAMES, MCIP, RPP
MANAGER, DEVELOPMENT REVIEW - CENTRAL
PLANNING, INFRASTRUCTURE & ECONOMIC
DEVELOPMENT DEPARTMENT, CITY OF OTTAWA

APPROVED
By Douglas James at 3:01 pm, Nov 08, 2021

ID.	BOTANICAL NAME	HEIGHT (m)	DBH (cm)	CRZ (m)	RETAIN / REMOVE	COMMENTS	GENERAL HEALTH
1	Acer saccharum	12	39	5	Remove		Healthy
2	Acer saccharum	8	7	0.7	Remove		Healthy
3	Acer saccharum	13	13	1.3	Remove	Severe mechanical damage	Healthy
4	Tilia cordata	18	56	5.6	Retain	Closed cavity	Healthy
5	Tilia cordata	18	38	3.8	Retain		Healthy
6	Tilia americana	21	91	9.1	Retain		Healthy
7	Tilia americana	21	47	4.7	Retain		Healthy
8	Tilia cordata	21	45	4.5	Retain		Healthy
9	Tilia cordata	21	53	5.3	Retain		Healthy
10	Tilia cordata	21	40	4	Retain	Pruning	Healthy
11	Tilia cordata	21	44	4.4	Retain		Healthy
12	Acer x freemanii	6	7	0.7	Retain		Healthy
13	Acer x freemanii	6	7	0.7	Remove		Healthy
14	Picea pungens	14	42	4.2	Remove		Healthy
15	Acer x freemanii	8	14	1.4	Remove		Healthy
16	Picea pungens	14	27	2.7	Remove		Healthy
17	Syringa reticulata	3	4	0.4	Remove		Dead
18	Syringa reticulata	3	4	0.4	Remove		Remove
19	Celtis	10	15	1.5	Remove		Healthy
20	Quercus	13	36	3.6	Remove	Rust	Fair
21	Acer saccharum	9	29	2.9	Remove	Damaged trunk	Poor
22	Ulmus pumila	9	24	2.4	Remove		Healthy
23	Ginkgo	6	8	0.8	Retain		Healthy
24	Celtis	7	13	1.3	Retain		Healthy
25	Celtis	5	9	0.9	Retain		Healthy
26	Picea glauca	13	38	3.8	Remove		Healthy
27	Larix laricina	13	23	2.3	Remove		Healthy
28	Acer platanoides	13	44	4.4	Retain	Severe pruning, dead branches, chances	Poor
29	Ulmus pumila	7	7	0.7	Retain		Healthy
30	Gleditsia tricanthos	6	6	0.6	Retain		Healthy

1 TREE PROTECTION FENCE DETAIL
L2 N.T.S.



- TREE PROTECTION REQUIREMENTS:
- PRIOR TO ANY WORK ACTIVITY WITHIN THE CRITICAL ROOT ZONE (CRZ = 10 X DIAMETER OF A TREE), TREE PROTECTION FENCING MUST BE INSTALLED SURROUNDING THE CRITICAL ROOT ZONE, AND REMAIN IN PLACE UNTIL THE WORK IS COMPLETE.
 - UNLESS PLANS ARE APPROVED BY CITY FORESTRY STAFF, FOR WORK WITHIN THE CRZ, DO NOT PLACE ANY MATERIAL OR EQUIPMENT - INCLUDING OUTHOUSES - DO NOT ATTACH ANY SIGNS, NOTICES OR POSTERS TO ANY TREE - DO NOT RAISE OR LOWER THE EXISTING GRADE - TUNNEL OR BORE WHEN DIGGING - DO NOT DAMAGE THE ROOT SYSTEM, TRUNK OR BRANCHES OF ANY TREE - ENSURE THAT EXHAUST FUMES FROM ALL EQUIPMENT ARE NOT DIRECTED TOWARD ANY TREE CANOPY - DO NOT EXTEND HARD SURFACE OR SIGNIFICANTLY CHANGE LANDSCAPING.
 - TREE PROTECTION FENCING MUST BE AT LEAST 1.2M IN HEIGHT, AND CONSTRUCTED OF RIGID OR FRAMED MATERIALS (E.G. MODULOC - STEEL, PLYWOOD HOARDING, OR SNOW FENCE ON A 2"x4" WOOD FRAME) WITH POSTS 2.4M APART, SUCH THAT THE FENCE LOCATION CANNOT BE ALTERED. ALL SUPPORTS AND BRACING MUST BE PLACED OUTSIDE OF THE CRZ, AND INSTALLATION MUST MINIMIZE DAMAGE TO EXISTING ROOTS. (SEE DETAIL.)
 - THE LOCATION OF THE TREE PROTECTION FENCING MUST BE APPROVED BY AN ARBORIST. GIVE NOTICE TO THE CONSULTANT ARBORIST ONCE FENCING IS IN PLACE FOR INSPECTION AND APPROVAL PRIOR TO THE COMMENCEMENT OF WORK.
 - IF THE FENCED TREE PROTECTION AREA MUST BE REDUCED TO FACILITATE CONSTRUCTION, MITIGATION MEASURES MUST BE PRESCRIBED BY AN ARBORIST AND APPROVED BY CITY FORESTRY STAFF. THESE MAY INCLUDE THE PLACEMENT OF PLYWOOD WOOD CHIPS OR STEEL PLATING OVER THE ROOTS FOR PROTECTION OR THE PROPER PRUNING AND CARE OF ROOTS WHEN ENCOUNTERED.
 - TREE PROTECTION MEASURES ARE TO BE APPROVED BY A CERTIFIED ARBORIST OR QUALIFIED LANDSCAPE ARCHITECT PRIOR TO COMMENCEMENT OF WORK.

1.2M MIN. HIGH TREE PROTECTION FENCING AS PER REQUIREMENT # 3
POSTS TO BE SPACED AT 2.4M O/C MAX AS PER REQUIREMENT # 3