

Surveyor's Certificate
I CERTIFY THAT:
1. This survey and plan are correct and in accordance with the Survey Act, the Surveyors Act and the Land Titles Act and the regulations made under them.
2. The survey was completed on the 14th day of July, 2020.
Date: July 21, 2020
Annis, O'Sullivan, Vollebek Ltd.
Ontario Land Surveyor

Notes & Legend

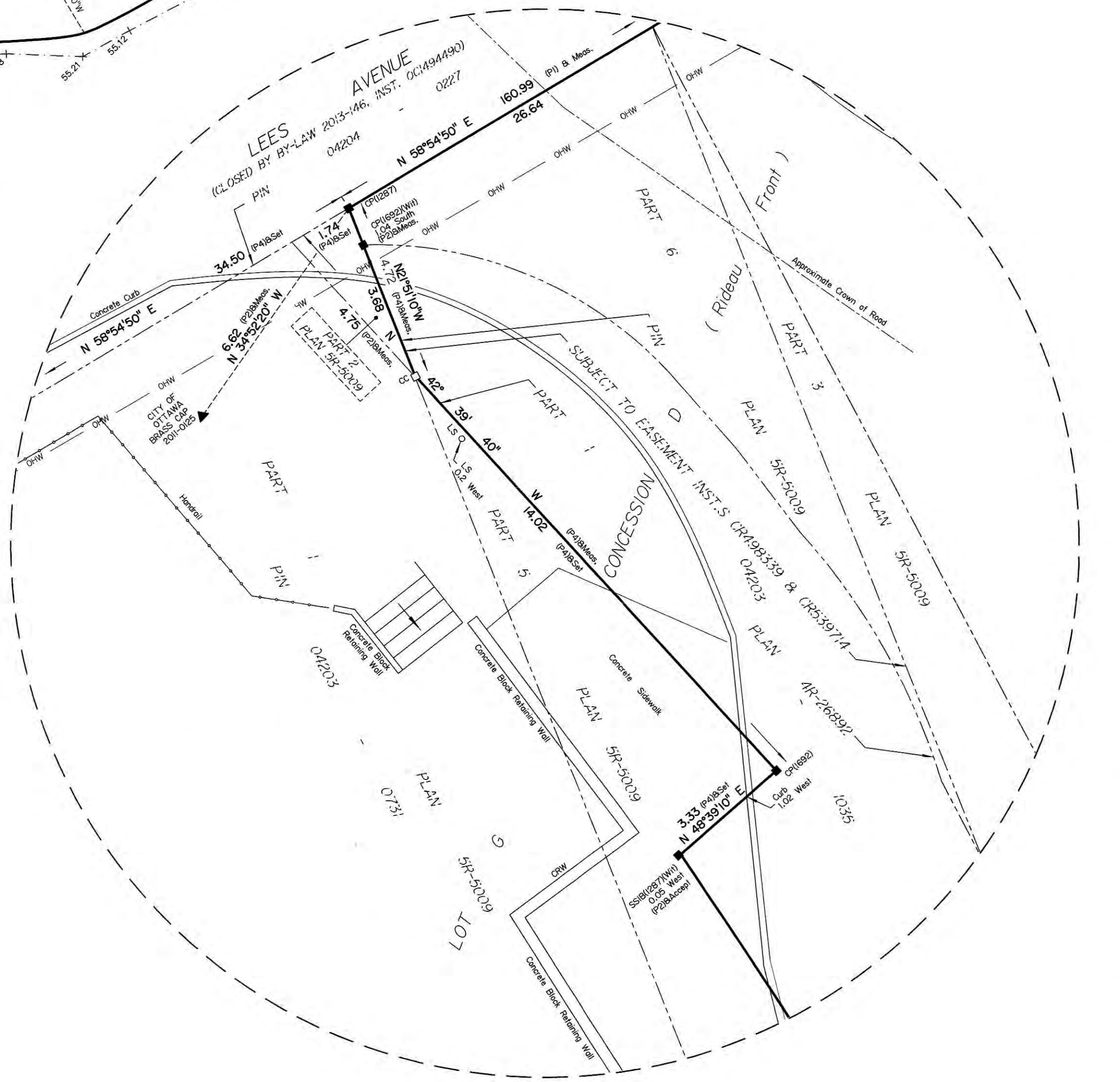
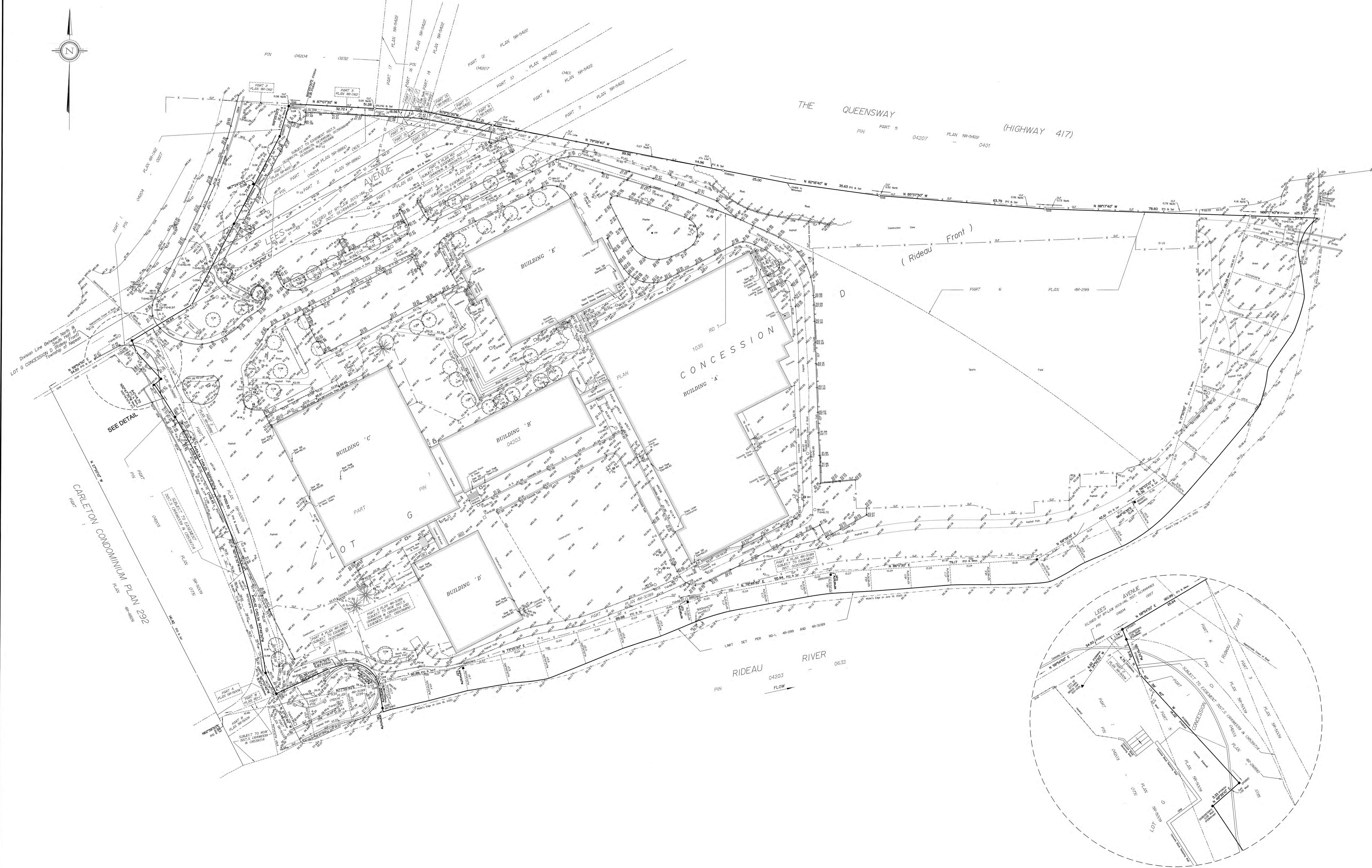
—	Demolition
—	Survey Monument Planted
—	Survey Monument Found
SB	Standard Iron Bar
SSB	Short Standard Iron Bar
IB	Iron Bar
CC	Cut Cross
CP	Concrete Pin
RB	Round Iron Bar
SWW	Spike & Washer
SSB*	Short Standard Iron Bar (3.3m Long)
IB*	Iron Bar (3.3m Long)
(WIT)	Witness
Messrs.	Messrs.
GOOS	Annis, O'Sullivan, Vollebek Ltd.
(P1)	Plan (1287) Sept. 19, 2002 (Ref. No. 258-02)
(P2)	Plan 48-21189
(P3)	Plan 48-2489
(P4)	Plan 58-5009
(P5)	Plan 48-1182
(P6)	Plan 48-299
(P7)	Plan 48-2662
(CW)	Concrete Retaining Wall
HT	Hand Hat
○	Deciduous Tree
○*	Coniferous Tree
○*	Fire Hydrant
○*	Water Valve
○*	Water Stand-Off
○*	Maintenance Hole (Storm Sewer)
○*	Maintenance Hole (Sanitary)
○*	Maintenance Hole (Bell Telephone)
○*	Maintenance Hole (Traffic)
○*	Maintenance Hole (Hydro)
○*	Maintenance Hole (Gas)
○*	Maintenance Hole (Underside)
○*	Valve Chamber (Waterman)
—	Underground Storm Sewer
—	Underground Water
—	Underground Power
—	Overhead Power
—	Catch Basin
—	Catch Basin Inlet
—	Compacted Steel Plate
—	Guard Rail on Curb
—	Chain Link Fence
—	Vent
—	Metal Pole
—	Gas Meter
—	Hydro Meter
—	Handhole
—	Bell Terminal Box
—	Cable Terminal Box
—	Traffic Terminal Box
—	Underside Terminal Box
—	Solar
—	Sign
—	Vent
—	Air Conditioner on Concrete Pad
—	Bottom of Slope
—	Top of Slope
—	Edge of Concrete
—	Edge of Asphalt
—	Elevation
—	Board Fence
—	Fuel and Wire
—	Quarrel
—	Gate
—	Utility Pole
—	Anchor
—	Light Standard
—	Flag Pole
—	Bell Terminal Box
—	Cable Terminal Box
—	Wall Cap
—	Wall
—	Air Conditioner
—	Wood Retaining Wall
—	Chimney
—	Location of Elevations
—	Top of Concrete Curb Elevation
—	Centerline
—	Property Line



Bearings are gtd, derived from Can-Nad 2016 Real Time Network GPS observations, NAD 83 Zone 18 (18°30' West Longitude) / NAD 83 (longitud).

ELEVATION NOTES
1. Elevations shown are geoidic and are referred to the CGVD25 geoidic datum.
2. It is the responsibility of the user of this information to verify that the job benchmark has not been altered or disturbed and that its relative elevation and description agree with the information shown on this drawing.

UTILITY NOTES
1. The bearing used to accept as acknowledging of the utilities and it will be the responsibility of the user to contact the respective utility authorities for confirmation.
2. Only visible surface utilities were located.
3. A field location of underground pipes by the pertinent utility authority is mandatory before any work involving breaking ground, probing, excavating, etc.



DETAIL
Scale 1:100