



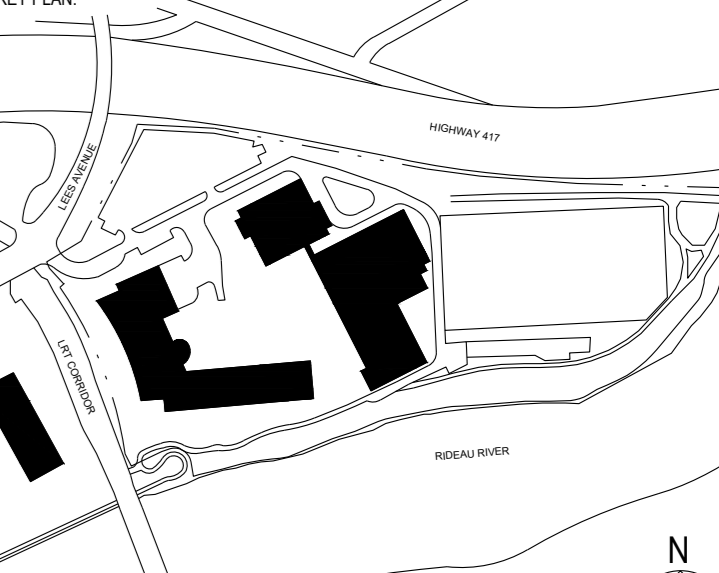
2811 Queenview Dr. Suite 300
Ottawa, Ontario K2B 8C2 Canada
T 613-829-2800 | F 613-829-8291 | www.wsp.com



49 Aruga Drive
Ottawa, Ontario K2E 8A1 Canada
T 613-978-3381 | www.pcl.com



200 LEES AVENUE
OTTAWA, ON



DISCLAIMER:
THIS DRAWING AND DESIGN IS COPYRIGHT PROTECTED. WORK SHALL NOT BE REPRODUCED OR TRANSMITTED IN ANY FORM OR BY ANY MEANS, ELECTRONIC OR MECHANICAL, INCLUDING PHOTOCOPYING, RECORDING, OR BY ANY INFORMATION STORAGE AND RETRIEVAL SYSTEM, WITHOUT THE WRITTEN PERMISSION OF THE ARCHITECT. ALL DIMENSIONS AND UTILITY LOCATIONS AND REPORT ALL ERRORS AND OMISSIONS PRIOR TO COMMENCING WORK. THIS DRAWING IS NOT TO BE SCALED.

SEALS FOR: ARCHITECT, ENGINEER, LANDSCAPE ARCHITECT



PROJECT NO.	DATE	DESCRIPTION
1	2021-06-28	ISSUED FOR SPCA

ORIGINAL SCALE: 1:250
DESIGNED BY: J.W.
DRAWN BY: J.M.
CHECKED BY: J.M.

DISCIPLINE: LANDSCAPE ARCHITECTURE

TITLE: LANDSCAPE PLAN

SHEET NUMBER: L1

ISSUED FOR SPCA
DATE: 2021-06-28

- LEGEND**
- PROPERTY LINE
 - LIMIT OF WORK
 - EXISTING TREE RETAINED
 - EXISTING TREE WITH ID NUMBER (REFER TO EXISTING TREE TABLE)
 - PROPOSED DECIDUOUS TREE
 - PROPOSED CONIFEROUS TREE
 - PROPOSED MASS SHRUB PLANTING
 - PROPOSED REFORESTATION PLANTING
 - PROPOSED BIOWALL PLANTING
 - PROPOSED WILDFLOWER MEADOW (SEED)
 - PROPOSED LAWN AREA (SOD)
 - PROPOSED PIGMENTED CIP CONCRETE
 - PROPOSED STANDARD CIP CONCRETE
 - PROPOSED ASPHALT PATH
 - REMOVE AND REPLACE EXISTING PRE-CAST UNIT PAVERS
 - PROPOSED STONE DUST SURFACE
 - PROPOSED 600MM WIDE GRAVEL MAINTENANCE STRIP TO BUILDING
 - PROPOSED FLAT-TOPPED BOULDERS TO PROVIDE INFORMAL SEATING
 - WASTE RECEPTACLE
 - BENCH
 - GALVANIZED STOCK TANKS RAISED PLANTERS WITH TOPSOIL, ON STONE DUST
 - POST AND RING BICYCLE PARKING WITH 9 RACKS (18 SPACES)
 - BICYCLE SHELTER WITH 9 RACKS (18 SPACES)
 - SECURED BICYCLE SHELTER WITH 9 RACKS (18 SPACES)
 - ANTI-RAM BOLLARDS
 - CAFE TABLES AND CHAIRS (UNFIXED)
 - FOLDING CHAIRS (UNFIXED)
 - ADIRONDACK CHAIRS (UNFIXED)
 - PICNIC TABLE (UNFIXED)
 - SERVICE DOG RELIEF AREA (3 TOTAL)
 - NEW SURFACE TO MEET AND MATCH EXISTING

BICYCLE PARKING
36 SHELTERED AND SECURE
116 SHELTERED
32 UN-SHELTERED
184 TOTAL

APPROXIMATE LOCATION OF EXISTING PATHWAY

PROPOSED PATHWAY TO MEET AND MATCH EXISTING PATHWAY, SMOOTH AND FLUSH

60cm PEA STONE DRIP STRIP UNDER WALLS WITH WINDOWS WITH ALUMINUM EDGER

60cm PEA STONE DRIP STRIP UNDER WALLS WITH WINDOWS

BIOSWALE AND DITCH

BIOSWALE INLET BASIN

1.5m ASPHALT PATHWAY

3m ASPHALT PATHWAY

EXISTING PATHWAY TO BE PRESERVED

EXISTING PATHWAY PORTION TO BE REMOVED

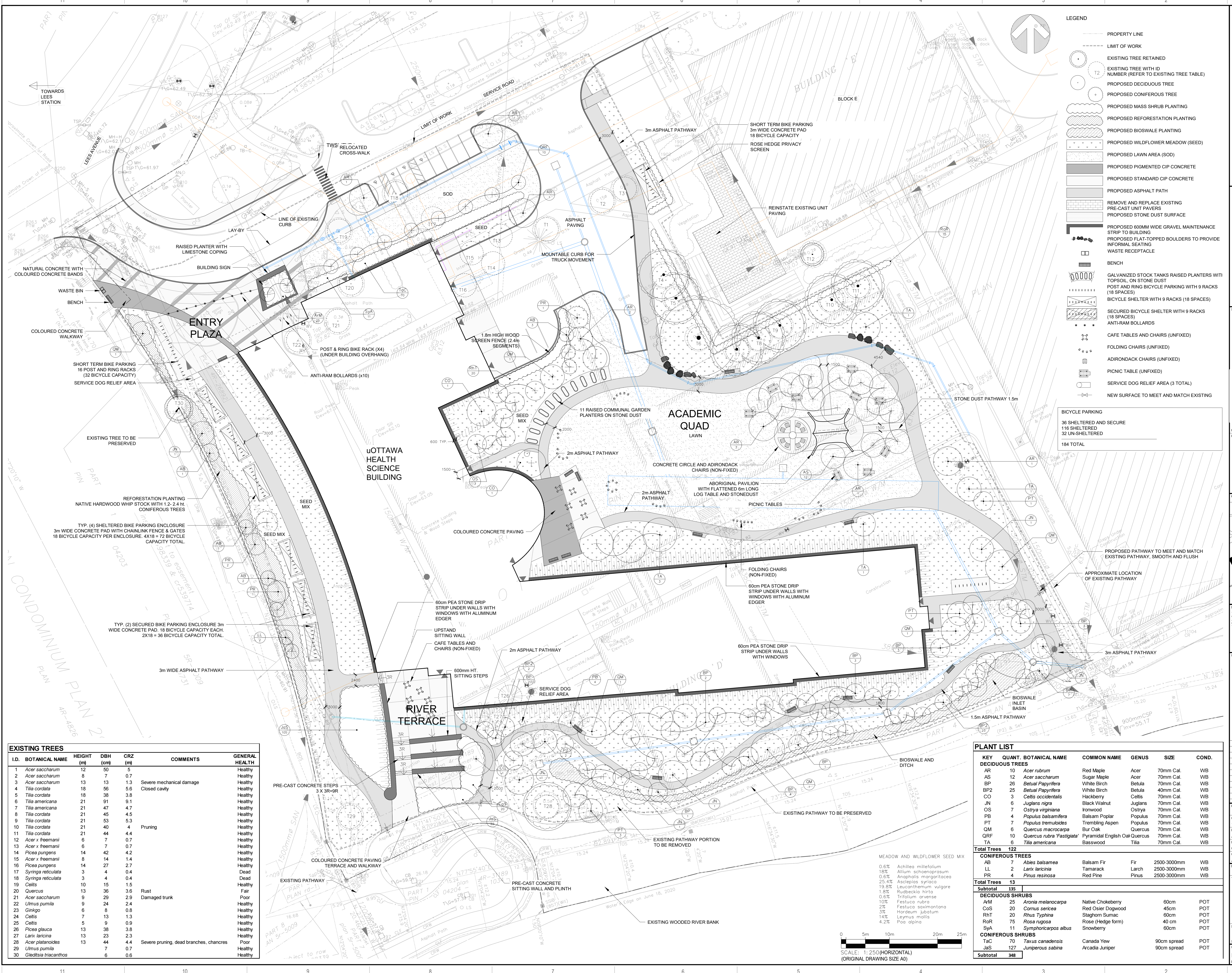
MEADOW AND WILDFLOWER SEED MIX

CONIFEROUS TREES

DECIDUOUS SHRUBS

CONIFEROUS SHRUBS

Subtotal 348



EXISTING TREES

I.D.	BOTANICAL NAME	HEIGHT (m)	DBH (cm)	CRZ (m)	COMMENTS	GENERAL HEALTH
1	Acer saccharum	12	50	5		Healthy
2	Acer saccharum	8	7	0.7		Healthy
3	Acer saccharum	13	13	1.3	Severe mechanical damage	Healthy
4	Tilia cordata	18	56	5.6	Closed cavity	Healthy
5	Tilia cordata	18	38	3.8		Healthy
6	Tilia americana	21	91	9.1		Healthy
7	Tilia americana	21	47	4.7		Healthy
8	Tilia cordata	21	45	4.5		Healthy
9	Tilia cordata	21	53	5.3		Healthy
10	Tilia cordata	21	40	4	Pruning	Healthy
11	Tilia cordata	21	44	4.4		Healthy
12	Acer x freemanii	6	7	0.7		Healthy
13	Acer x freemanii	6	7	0.7		Healthy
14	Picea pungens	14	42	4.2		Healthy
15	Acer x freemanii	8	14	1.4		Healthy
16	Picea pungens	14	27	2.7		Healthy
17	Syringa reticulata	3	4	0.4		Dead
18	Syringa reticulata	3	4	0.4		Dead
19	Celtis	10	15	1.5		Healthy
20	Quercus	13	36	3.6	Rust	Fair
21	Acer saccharum	9	29	2.9	Damaged trunk	Poor
22	Ulmus pumila	9	24	2.4		Healthy
23	Ginkgo	6	8	0.8		Healthy
24	Celtis	7	13	1.3		Healthy
25	Celtis	5	9	0.9		Healthy
26	Picea glauca	13	38	3.8		Healthy
27	Larix laricina	13	23	2.3		Healthy
28	Acer platanoides	13	44	4.4	Severe pruning, dead branches, cankers	Poor
29	Ulmus pumila	7	7	0.7		Healthy
30	Gleditsia tricanthos	6	6	0.6		Healthy

