

CITY DETAILS

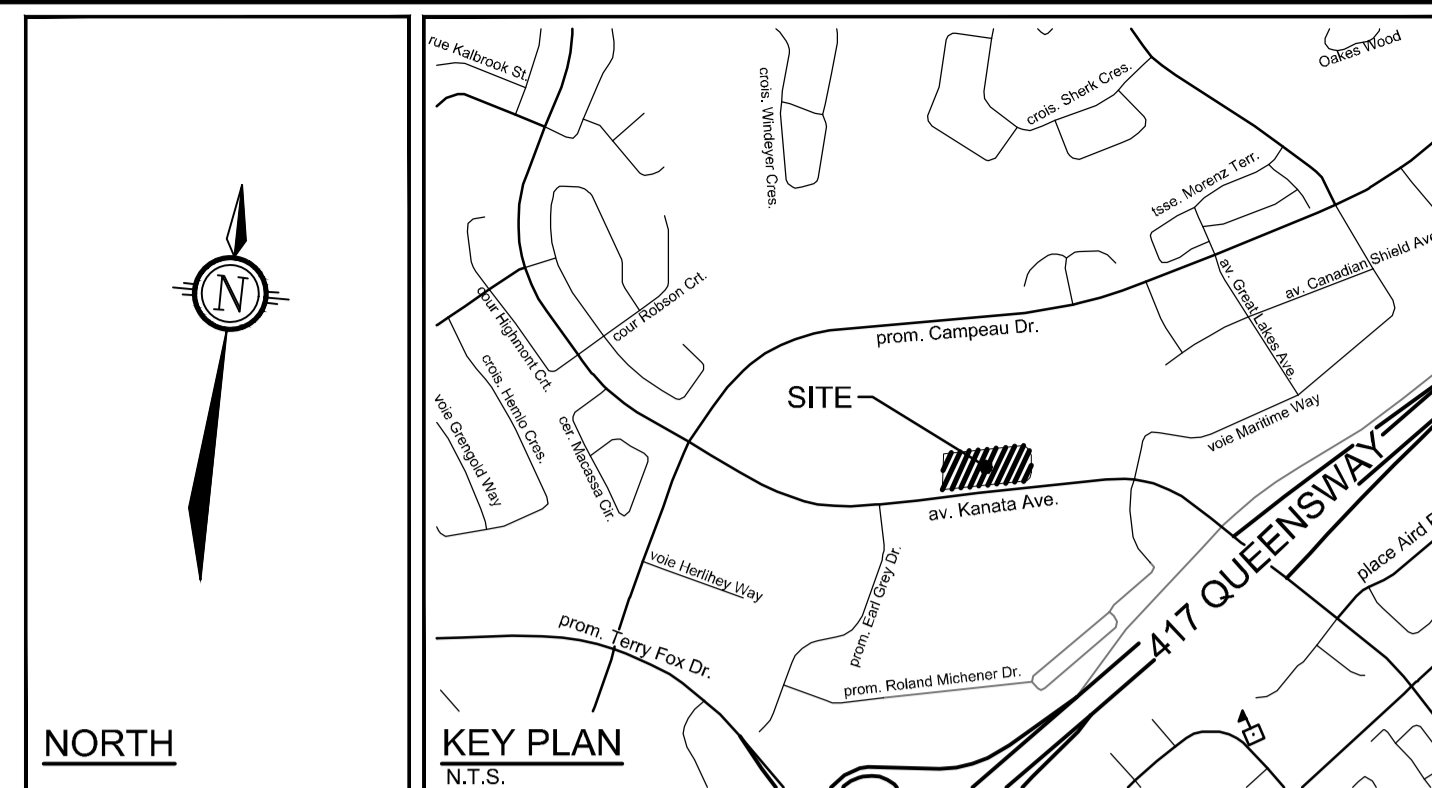
Related details from City of Ottawa Standard Tender Documents
Volume No. 2 Standard Detail Drawings.

- SC4. Typical Concrete Sidewalk in Boulevard
- SC5. Sidewalk Construction Joints

NOVATECH DETAILS

Found on Sheet L2.

- D1. Standard Deciduous Tree Planting
- D2. Standard Coniferous Tree Planting
- D3. Shrub and Perennial Planting
- D4. Bike Layout



LEGEND

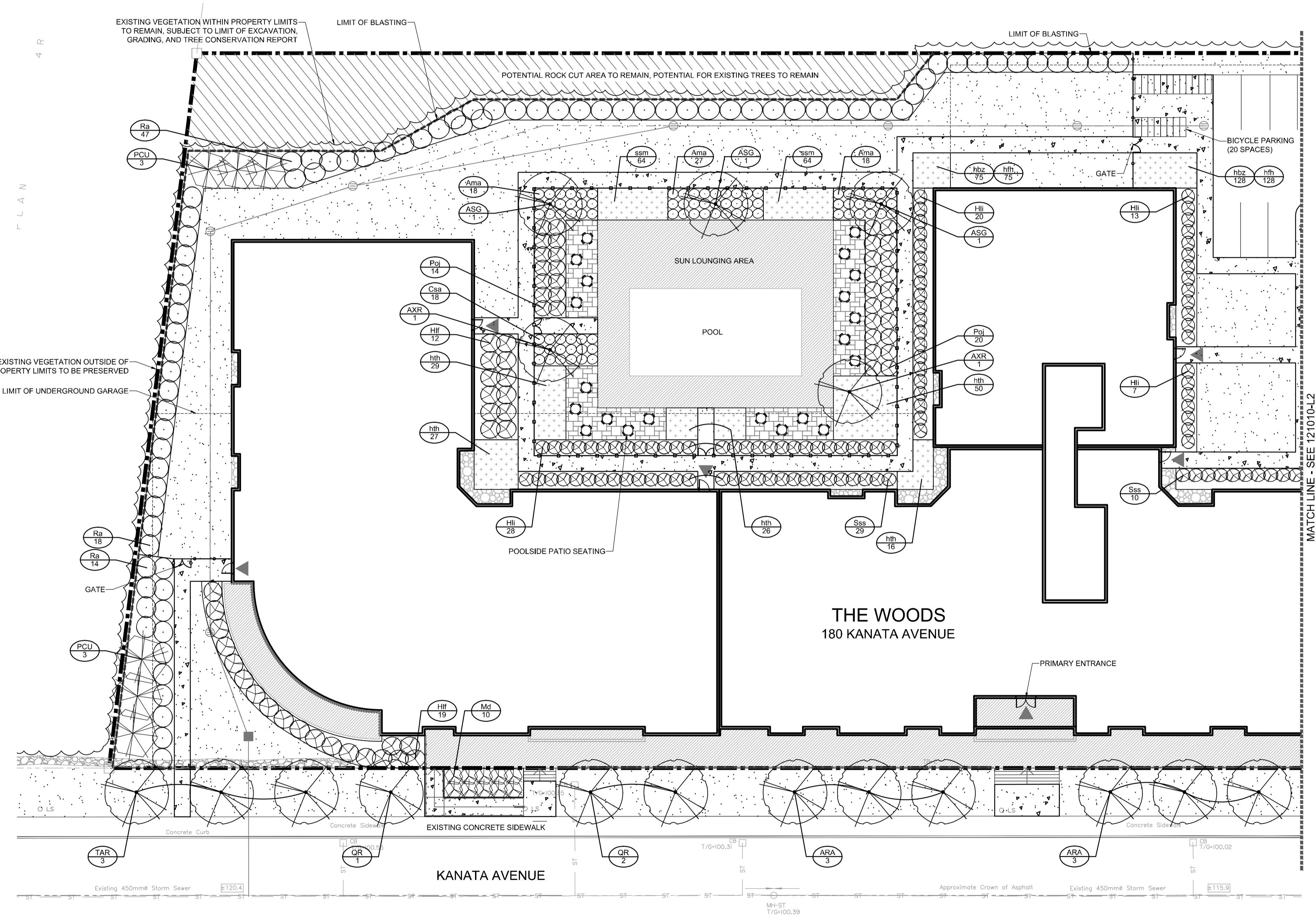
- PROPERTY LIMIT
- LIMIT OF UNDERGROUND GARAGE
- [Pattern] PROPOSED CONCRETE
- [Pattern] RIVER STONE
- [Pattern] PROPOSED PAVERS TBD.
- [Pattern] SOD
- [Pattern] PERENNIALS
- [Pattern] ORNAMENTAL GRASSES
- [Symbol] PROPOSED DECIDUOUS TREE
- [Symbol] PROPOSED CONIFEROUS TREE
- [Symbol] PROPOSED SHRUBS
- [Symbol] PROPOSED PRIVACY FENCE 1.8m HT
- [Symbol] PROPOSED DECORATIVE METAL RAILING 1.2m HT
- [Symbol] PROPOSED DECORATIVE METAL FENCE 1.5m HT
- [Symbol] GATE
- [Symbol] SPECIES (SEE PLANT LIST)
- [Symbol] QUANTITY

GENERAL

1. Read and interpret this drawing/ drawing set in conjunction with all the contract details and specifications, including related civil, utility, structural, architectural, mechanical, electrical, environmental, geotechnical, and survey information.
2. The Contractor is to determine the exact location, size, material, and elevation of all existing utilities prior to commencing construction. Protect and assume responsibility for all existing utilities regardless of being shown on the drawings.
3. It is essential to use the plans and details in conjunction with the specifications and notes.
4. Do not scale drawings. Work to dimensions only.
5. Protect all existing and retained vegetation for the duration of construction according to the contract details and specifications.
6. Reinstatement all areas and items damaged or disturbed, beyond the Limit of Work, because of construction activities, including but not limited to construction staging areas, haul roads, stockpile areas, etc. to the satisfaction of the Consultant. Unless otherwise noted, Contractor is to restate all areas to pre-construction condition or better to the satisfaction of the Contract Administrator.

PLANTING

1. Plant material to be No. 1 Grade and is to comply with Canadian Standards for Nursery Stock (latest edition) published by the Canadian Nursery Landscape Association. Use structurally sound plant material with strong fibrous root system free of disease, defects, and injuries. Use trees with straight trunks, well and characteristically branched for species. Obtain approval from consultant of plant material at source prior to digging. All trees and shrubs to be container grown, potted, W/B or B/B, as indicated on Plant List. Bare root plants are only acceptable for certain species and as approved by the Landscape Architect.
2. Plant material substitutions are not permitted without the written approval from the Consultant, with 48 hours notice, prior to shipping plant material.
3. Plant locations are schematic / approximate only. Contractor is to stake out locations on site for approval by the Landscape Architect prior to installation. Contractor will assume full responsibility if the Landscape Architect is not notified.
4. Ensure trees are thoroughly watered following planting. Monitor material and ensure adequate moisture until acceptance.
5. In heavy clay or poorly drained soils, set root ball with root collar 75-100mm higher than finished grade.
6. Approved topsoil depths are as follows:
 - a. Plant Beds - 450mm continuous depth. Applies to shrubs, perennials, vines, and groundcovers.
 - b. Sod/ Seed Areas - 100mm depth.
 - c. Reforestation - 300mm depth.
7. Sod to be No. 1 Kentucky Bluegrass Sod grown from minimum mixture of 3 Kentucky Bluegrass cultivars. Quality and source are to comply with Canadian Standards for Nursery Stock, Section 17, (latest edition) published by the Canadian Nursery Landscape Association.
8. Install a 1.2m sod strip adjacent to all hard surfaces. Note, sod is not typically graphically shown on plans.
9. Apply the following mineral fertilizer unless soil tests show other requirements:
 - a. Plant Beds - (8-32-16), i.e. 8% Nitrogen, 32% Phosphorus, 16% Potash per manufacturer specifications.
 - b. Sod Areas - (8-32-16), i.e. 8% Nitrogen, 32% Phosphorus, 16% Potash at a rate of 350kg/ha.
10. Where applicable, for any plant areas with a mix of species/ cultivars notes, Contractor is to cluster like plants in groups of 3-5 and evenly distribute these in the noted area.



PLANT LIST

KEY	QTY	BOTANICAL NAME	COMMON NAME	SIZE	COND	SPACING
Coniferous Trees						
PCU	5	<i>Picea abies 'Cupressina'</i>	Columnar Norway Spruce	175cm Ht	WB	As Shown
Deciduous Trees						
ARA	6	<i>Acer rubrum 'Autumn Spire'</i>	Autumn Spire Red Maple	50mm Cal	WB	As Shown
AXR	2	<i>Amelanchier x grandiflora 'Robin Hill'</i>	Robin Hill Serviceberry	50mm Cal	WB	As Shown
ASG	3	<i>Acer saccharum 'Green Mountain'</i>	Green Mountain Sugar Maple	50mm Cal	WB	As Shown
QR	3	<i>Quercus rubra</i>	Red Oak	50mm Cal	WB	As Shown
TAR	3	<i>Tilia americana 'Redmond'</i>	Redmond Linden	50mm Cal	WB	As Shown
Coniferous Shrubs						
Md	10	<i>Microrhiza decussata</i>	Siberian Carpet Cypress	40cm Spr	PT	As Shown
Deciduous Shrubs						
Ama	63	<i>Aronia melanocarpa 'Autumn Magic'</i>	Autumn Magic Chokecherry	60cm Ht	PT	As Shown
Csa	18	<i>Cornus sericea 'Farrow'</i>	Arctic Fire Dogwood	2g	PT	As Shown
Hil	88	<i>Hydrangea paniculata 'Little Lime' 'Jane'</i>	Little Lime Hydrangea	2g	PT	As Shown
Hil	31	<i>Hydrangea paniculata 'SMHPLQ'</i>	Little Quick Fire Hydrangea	2g	PT	As Shown
Poj	34	<i>Physocarpus opulifolius 'UEFAM'</i>	Amber Jubilee Ninebark	60cm Ht	PT	As Shown
Ra	79	<i>Rhus aromatica</i>	Fragrant Sumac	3g	PT	As Shown
Sss	39	<i>Sorbaria sorbifolia 'Sem'</i>	Sem False Spirea	3g	PT	As Shown
Perennials						
hth	203	<i>Hemerocallis 'Bonanza'</i>	Bonanza Daylily	1g	PT	30cm O.C
hth	203	<i>Hemerocallis 'Frans Hals'</i>	Frans Hals Daylily	1g	PT	30cm O.C
ssm	128	<i>Sedum spectabile 'Matrona'</i>	Matrona Showy Stonecrop Sedum	1g	PT	60cm O.C
hth	148	<i>Hosta 'Halcyon'</i>	Halcyon Hosta	1g	PT	90cm O.C

NOTE:
THE POSITION OF ALL POLE LINES, CONDUITS, WATERMANS, SEWERS AND OTHER UNDERGROUND AND OVERGROUND UTILITIES AND STRUCTURES IS NOT NECESSARILY SHOWN ON THE CONTRACT DRAWINGS, AND WHERE SHOWN, THE ACCURACY OF THE POSITION OF SUCH UTILITIES AND STRUCTURES IS NOT GUARANTEED, BEFORE STARTING WORK, DETERMINE THE EXACT LOCATION OF ALL SUCH UTILITIES AND STRUCTURES AND ASSUME ALL LIABILITY FOR DAMAGE TO THEM.

NOT FOR CONSTRUCTION

No.	REVISION	DATE	BY
1.	ISSUED FOR SITE PLAN APPLICATION	JUL 5/21	RJ

SCALE

1:250

DESIGN RJ

CHECKED RJ

DRAWN MT

CHECKED MT

APPROVED RJ

FOR REVIEW ONLY

NOVATECH

Engineers, Planners & Landscape Architects
Suite 200, 240 Michael Cowpland Drive
Ottawa, Ontario, Canada K2M 1P6

Telephone (613) 254-9643
Facsimile (613) 254-5867
Website www.novatech-eng.com

LOCATION
CITY OF OTTAWA
THE WOODS, 180 KANATA AVENUE

DRAWING NAME
LANDSCAPE
WESTERN PORTION
AND POOL AREA

PROJECT NO. 121010-00

REV REV #1

DRAWING NO. 121010-L1

M:\2021\121010\CADD\Landscapes\121010-L1.dwg, L1, Jul 01, 2021 - 4:24pm, mrouleau