

TOPOGRAPHICAL PLAN OF SURVEY OF
LOTS 7, 8, 9, 10, 11, 12, 13 and 14
REGISTERED PLAN 49
CITY OF OTTAWA

Surveyed by Annis, O'Sullivan, Vollebek Ltd.

Scale 1:150

Metric
 DISTANCES SHOWN ON THIS PLAN ARE IN METRES AND
 CAN BE CONVERTED TO FEET BY DIVIDING BY 0.3048

Surveyor's Certificate

- I CERTIFY THAT:
1. This survey and plan are correct and in accordance with the Surveys Act and the Surveyors Act and the regulations made under them.
 2. The survey was completed on the 2nd day of November, 2020.

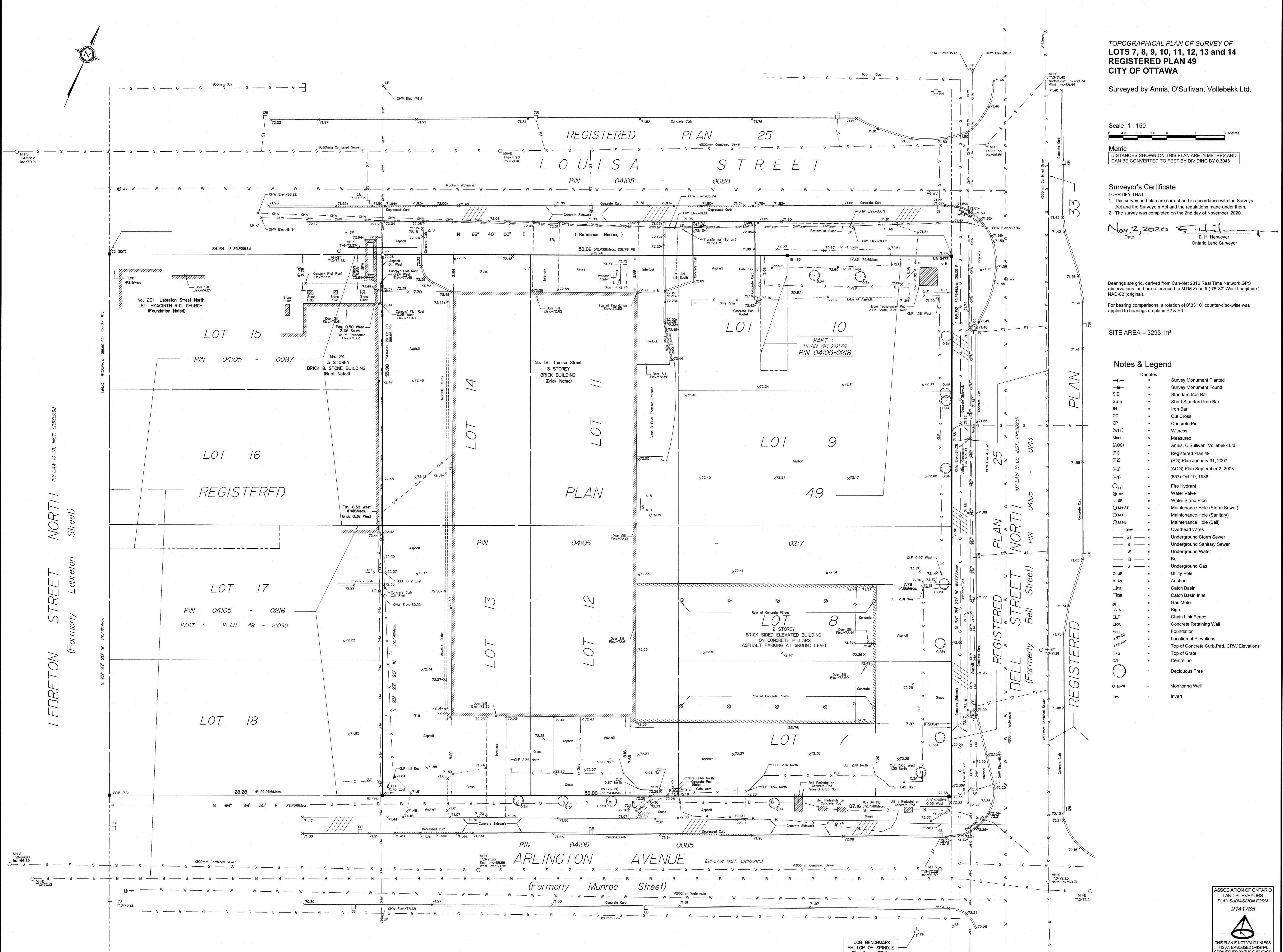
Nov. 2, 2020
 Date
 E. H. Herveyer
 Ontario Land Surveyor

Bearings are grid, derived from Can-NET 2016 Real Time Network GPS observations and are referenced to MTM Zone 9 (76°30' West Longitude) NAD-83 (original).
 For bearing comparisons, a rotation of 0°33'10" counter-clockwise was applied to bearings on plans P2 & P3.

SITE AREA = 3293 m²

Notes & Legend

- | | | |
|----------|-------------------------------------|-------------------------|
| —□— | Denotes | Survey Monument Planted |
| —■— | Survey Monument Found | |
| — — | Standard Iron Bar | |
| —SSIB— | Short Standard Iron Bar | |
| —IB— | Iron Bar | |
| —CC— | Cut Cross | |
| —CP— | Concrete Pin | |
| —(WIT)— | Witness | |
| —Meas.— | Measured | |
| —(AOG)— | Annis, O'Sullivan, Vollebek Ltd. | |
| —(P1)— | Registered Plan 49 | |
| —(P2)— | (SG) Plan January 31, 2007 | |
| —(P3)— | (AOG) Plan September 2, 2008 | |
| —(P4)— | (857) Oct 19, 1988 | |
| —FH— | Fire Hydrant | |
| —WV— | Water Valve | |
| —SP— | Water Stand Pipe | |
| —MH-ST— | Maintenance Hole (Storm Sewer) | |
| —MH-S— | Maintenance Hole (Sanitary) | |
| —MH-B— | Maintenance Hole (Bell) | |
| —OHW— | Overhead Wires | |
| —ST— | Underground Storm Sewer | |
| —S— | Underground Sanitary Sewer | |
| —W— | Underground Water | |
| —B— | Bell | |
| —G— | Underground Gas | |
| —UP— | Utility Pole | |
| —AN— | Anchor | |
| —CB— | Catch Basin | |
| —CBI— | Catch Basin Inlet | |
| —GM— | Gas Meter | |
| —AS— | Sign | |
| —CLF— | Chain Link Fence | |
| —CRW— | Concrete Retaining Wall | |
| —Fdn.— | Foundation | |
| —+60.00— | Location of Elevations | |
| —+60.00— | Top of Concrete Pad, CRW Elevations | |
| —T/G— | Top of Grade | |
| —C/L— | Centreline | |
| —(Tree)— | Deciduous Tree | |
| —M-W— | Monitoring Well | |
| —Inv.— | Invert | |



ELEVATION NOTES

1. Elevations shown are geoidic and are referred to the CGVD28 geoidic datum, derived from vertical control monument No. 3603 having an elevation of 76.959 metres
2. It is the responsibility of the user of this information to verify that the job benchmark has not been altered or disturbed and that its relative elevation and description agrees with the information shown on this drawing.

UTILITY NOTES

1. This drawing cannot be accepted as acknowledging all of the utilities and it will be the responsibility of the user to contact the respective utility authorities for confirmation.
2. Only visible surface utilities were located.
3. Underground utility data derived from City of Ottawa utility sheet reference F-10-03
4. Sanitary and storm sewer grades and inverts were derived from City of Ottawa engineering Plan No. 5022 sheets 11, 14 & 16
 Plan No. 5355 sheets 6, 7 & 11
5. A field location of underground plant by the pertinent utility authority is mandatory before any work involving breaking ground, probing, excavating etc.

ASSOCIATION OF ONTARIO
 LAND SURVEYORS
 PLAN SUBMISSION FORM
2141765

 THIS PLAN IS NOT VALID UNLESS
 IT IS AN UNREPRODUCED ORIGINAL
 COPY ISSUED BY THE SURVEYOR
 In accordance with
 Regulation 1028, Section 29 (3).

© Annis, O'Sullivan, Vollebek Ltd. 2019. THIS PLAN IS PROTECTED BY COPYRIGHT.
ANNIS, O'SULLIVAN, VOLLEBEK LTD.
 14 Concourse Gate, Suite 509
 Nepean, Ont. K2E 7S6
 Phone: (613) 727-0850 / Fax: (613) 727-1079
 Email: info@anniso.com
 Reg. No. 2029-20 J.E. L. 7 P. 49 T.F.