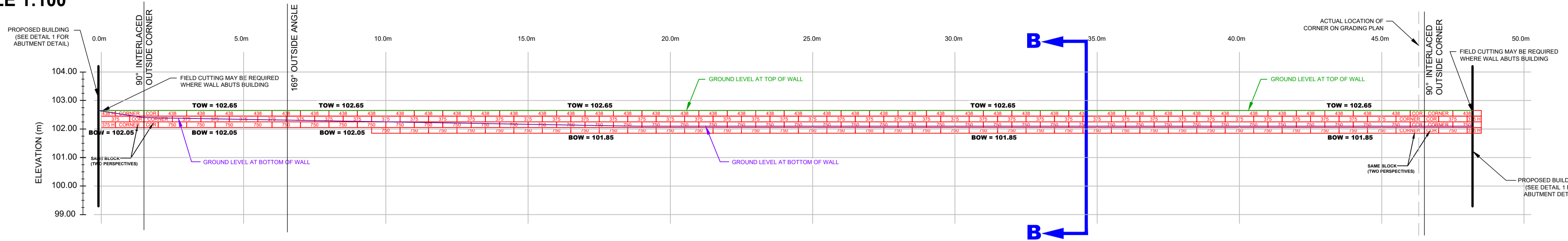


PROFILE VIEW (G1):

SCALE 1:100



ISSUED FOR REVIEW

NOTES:

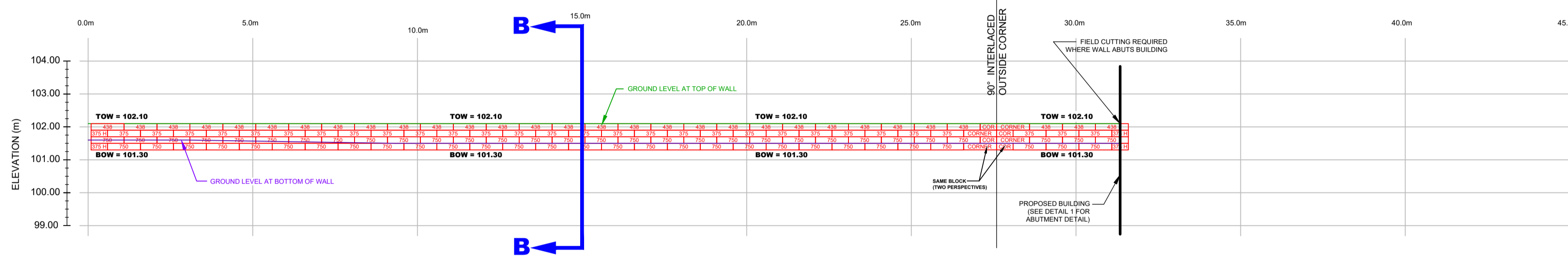
- THE CONTRACTOR IS SOLELY RESPONSIBLE FOR UTILITY CLEARANCES AND CONSTRUCTION SITE SAFETY. PATERSON GROUP SHALL NOT BE RESPONSIBLE FOR MEANS OR METHODS OF CONSTRUCTION OR FOR SAFETY OF WORKERS OR OF THE PUBLIC.
- THIS DESIGN IS BASED ON THE FOLLOWING SOIL PROPERTIES:

PROPERTY	RETAINED FILL	FOUNDATION MEDIUM
FRICITION ANGLE - ϕ	38°	33°
UNIT WEIGHT - γ	21 kN/m ³	17 kN/m ³
COHESION - C	0	5 kPa
SOIL TYPE	OPSS GRANULAR B TYPE II	STIFF SILTY CLAY

MATERIAL PROPERTIES ARE BASED ON SITE EVALUATION BY PATERSON GROUP AND DISCUSSIONS WITH CONTRACTOR. SEISMIC LOADING WAS EVALUATED ACCORDING TO THE CURRENT CANADIAN HIGHWAY BRIDGE DESIGN CODE WITH A PEAK GROUND ACCELERATION VALUE OF 0.257.
- THE DESIGN ELEVATIONS USED WERE BASED ON DRAWING A060, SITE PLAN, REVISION 3.A DATED OCTOBER 7, 2022, PROVIDED BY NEUF ARCHITECTS LTD. THE WALL BASE DESIGN ASSUMES A BEARING RESISTANCE AT SLS OF 150 kPa ON SILTY CLAY. PATERSON GROUP ENGINEER SHOULD OBSERVE THE BEARING CONDITIONS AND ADJUST THE THICKNESS OF THE GRANULAR BASE TO ACCOMMODATE THE SITE CONDITIONS, IF NECESSARY.
- RETAINING WALL DESIGN WITH A GLOBAL STABILITY FACTOR GREATER THAN 1.5 UNDER STATIC CONDITIONS AND 1.1 UNDER SEISMIC CONDITIONS. WALL GEOMETRY AND GRADE ELEVATIONS ABOVE AND BELOW THE WALL SHOULD CONFORM WITH THE GRADING PLAN PROVIDED HERE IN IF ACTUAL SITE GRADES VARY SIGNIFICANTLY FROM THOSE SHOWN OR IF THE BACK SLOPE DOES NOT CONFORM, INSTALLATION SHALL NOT PROCEED UNTIL THE DESIGN IS VERIFIED OR MODIFIED IN THE APPLICABLE AREA.
- PRECAST UNITS SHALL BE GRANDE RETAINING WALL UNITS MANUFACTURED UNDER LICENSE FROM PERMACON.
- THE WALL BASE SHALL CONSIST OF A MINIMUM OF 200mm OF OPSS GRANULAR B TYPE II. THE GRANULAR BEDDING LAYER SHOULD EXTEND AT LEAST 200mm BEYOND THE FRONT BLOCK FACE AND A MINIMUM OF 200mm BEYOND THE REAR BLOCK FACE. THE BASE SHALL BE SMOOTHED TO ENSURE COMPLETE CONTACT OF RETAINING WALL UNIT WITH BASE. SURFACE OF GRANULAR BASE MAY BE DRESSED WITH FINER AGGREGATE TO AID LEVELING. ENSURE GRADATION OF DRESSING MATERIAL IS SUCH AS TO PRECLUDE LOSS OF FINES INTO BASE. THE THICKNESS OF DRESSING LAYER SHOULD NOT EXCEED 3 TIMES THE MAXIMUM PARTICLE SIZE USED.
- WALL IS DESIGNED WITH A MIN. 200mm TOE EMBEDMENT WITH A GRANULAR BEDDING LAYER EXTENDING A MINIMUM 200mm BEYOND THE FACE, AND A MINIMUM 200mm BEYOND THE HEEL OF THE BASE BLOCK.
- THE CONDITIONS WILL BE EVALUATED BY THE GEOTECHNICAL ENGINEER DURING PREPARATION FOR WALL CONSTRUCTION IN EACH AREA TO CONFIRM THE SUBSURFACE PROFILE INDICATED BY THE GEOTECHNICAL REPORT WITHIN THE FOOTPRINT OF THE PROPOSED WALL. WHERE GRANULAR BEDDING WILL NOT BE SUFFICIENT, THE USE OF CONCRETE BEDDING MAY BE REQUIRED AND WILL BE PROVIDED AS SITE INSTRUCTIONS.
- BACKFILL MATERIAL SHALL BE APPROVED BY THE SITE GEOTECHNICAL ENGINEER PRIOR TO USE AND SHOULD CONSIST OF OPSS GRANULAR B TYPE II B FOLLOWED BY SUITABLE BACKFILL MATERIAL. ALL FILL WITHIN A 1H:1V ZONE UP AND BACK FROM THE HEEL SHOULD ALSO BE COMPACTED. BACKFILL SHALL BE PLACED IN MAXIMUM 300mm LOOSE LIFTS AND COMPACTED TO A MINIMUM OF 95% OF SPMD. MOISTURE CONTENT SHOULD BE CONTROLLED AND MAINTAINED WITHIN -3 TO +4 PERCENT OF OPTIMUM.
- MAINTAIN TEMPORARY GRADES TO DIVERT SURFACE WATER AWAY FROM THE RETAINING WALL EXCAVATION. SLOPE FINAL BACKFILL TO PROVIDE POSITIVE DRAINAGE AND TO ELIMINATE PONDING.
- EXCAVATION SIDE SLOPE SHOULD BE PROTECTED TEMPORARILY DURING CONSTRUCTION FROM PRECIPITATION EVENTS BY PLACEMENT OF TARPS.
- ALL RETAINING WALL RELATED INSPECTIONS (BEARING SURFACE, COMPACTION, BLOCK INSTALLATION, ETC.) MUST BE COMPLETED BY PATERSON GROUP. ONCE THE WALL CONSTRUCTION IS COMPLETED AND REVIEWED BY PATERSON DURING CONSTRUCTION, A CERTIFICATE LETTER WILL BE ISSUED BY PATERSON GROUP.
- ANY CUTTING OF BLOCKS TO SUIT SITE CONDITIONS OR WALL DESIGN WILL BE THE RESPONSIBILITY OF THE CONTRACTOR.
- INSTALL 100mmØ PERFORATED PIPE SUBDRAIN WRAPPED WITH GEOTEXTILE SOCK BEHIND THE RETAINING WALL. PROVIDE CLEAR STONE SURROUND TO PROTECT PIPE FROM CLOGGING AND PROVIDE OUTLETS THROUGH THE WALL TO DRAINAGE DITCH OR GROUND SURFACE AT MINIMUM INTERVALS OF 15.0m
- USE MASONRY ADHESIVE RECOMMENDED BY THE SUPPLIER FOR THE TOP THREE COURSES
- ALIGNMENT OF THE BOTTOM WALL UNIT COURSE SHOULD BE PLANNED TO CONSIDER A NOMINAL 50mm AUTOMATIC SETBACK WILL OCCUR EVERY SECOND COURSE INCREMENT.
- PROFILE VIEW PROVIDED IS APPROXIMATE USING STANDARD BLOCK SIZE AND ARRANGEMENT, THE CONTRACTOR WILL BE RESPONSIBLE FOR FINAL PROFILE LAYOUT AS PER PROVIDED CROSS-SECTIONS. FIELD CUTTING IS EXPECTED TO BE REQUIRED TO FIT BLOCKS IN PROVIDED AREA.
- THE CONTRACTOR SHOULD REFER TO THE INSTALLATION MANUAL PROVIDED FOR THE RETAINING WALL BLOCK TYPE PROVIDED HEREIN FOR ADDITIONAL DETAILS ON ACCEPTABLE INSTALLATION PRACTICES.

PROFILE VIEW (G2):

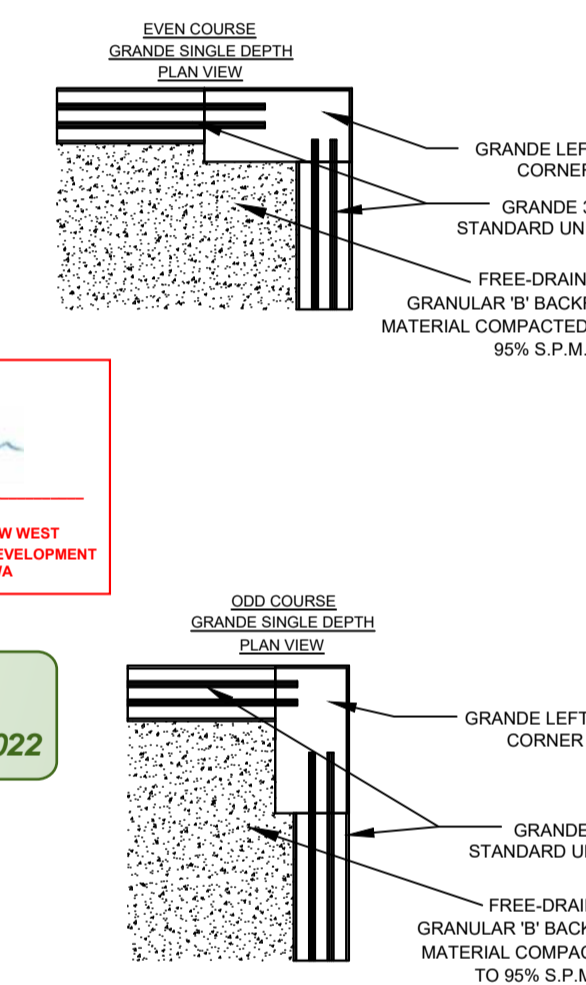
SCALE 1:100



OUTSIDE CORNER DETAIL:

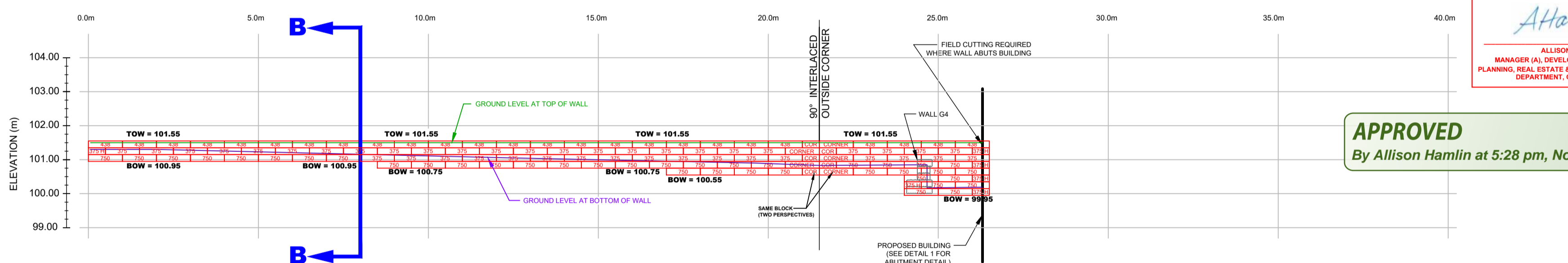
N.T.S.

GRANDE SINGLE-DEPTH PLAN VIEW - OUTSIDE CORNER



PROFILE VIEW (G3):

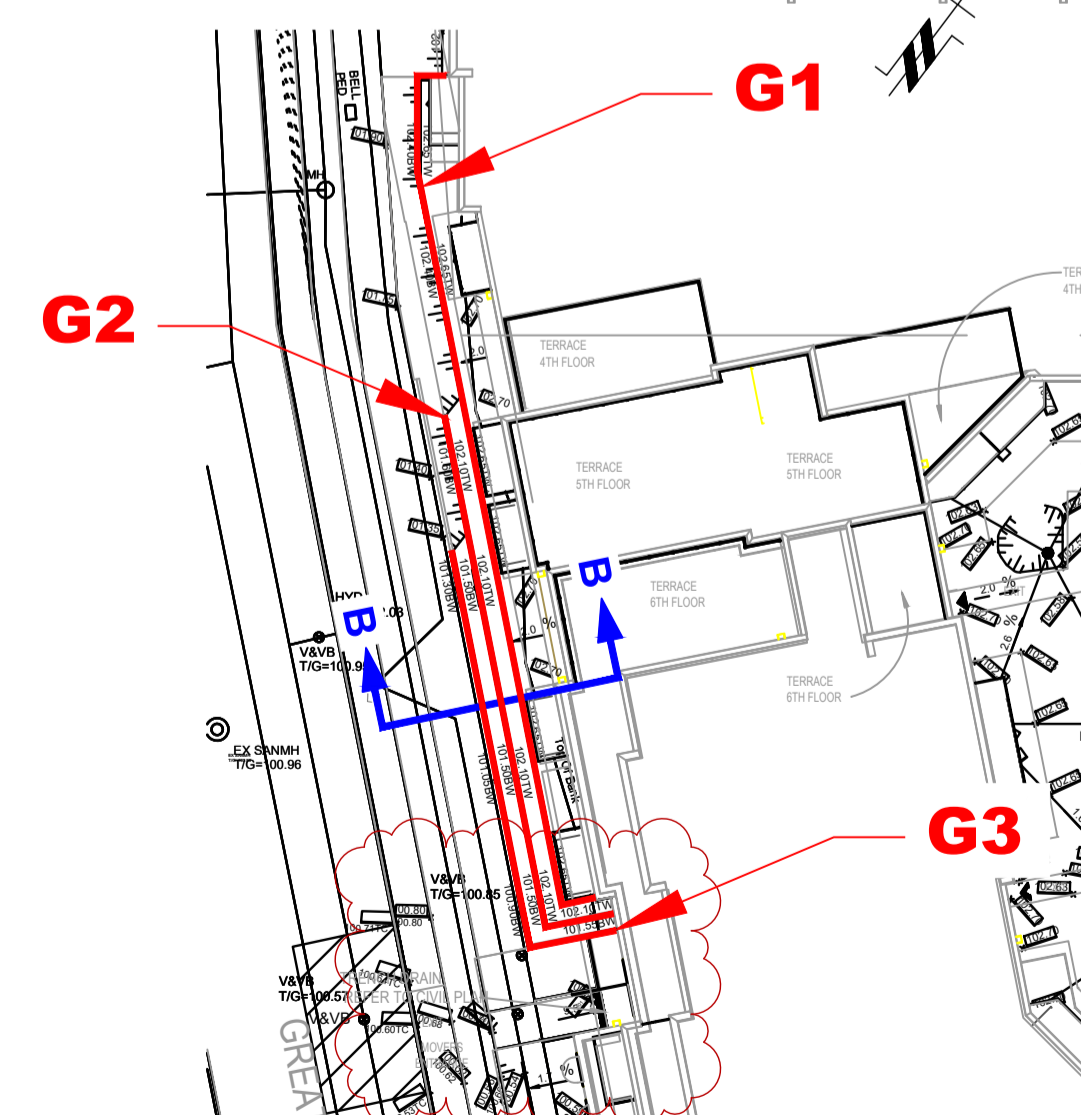
SCALE 1:100



APPROVED
By Allison Hamlin at 5:28 pm, Nov 14, 2022

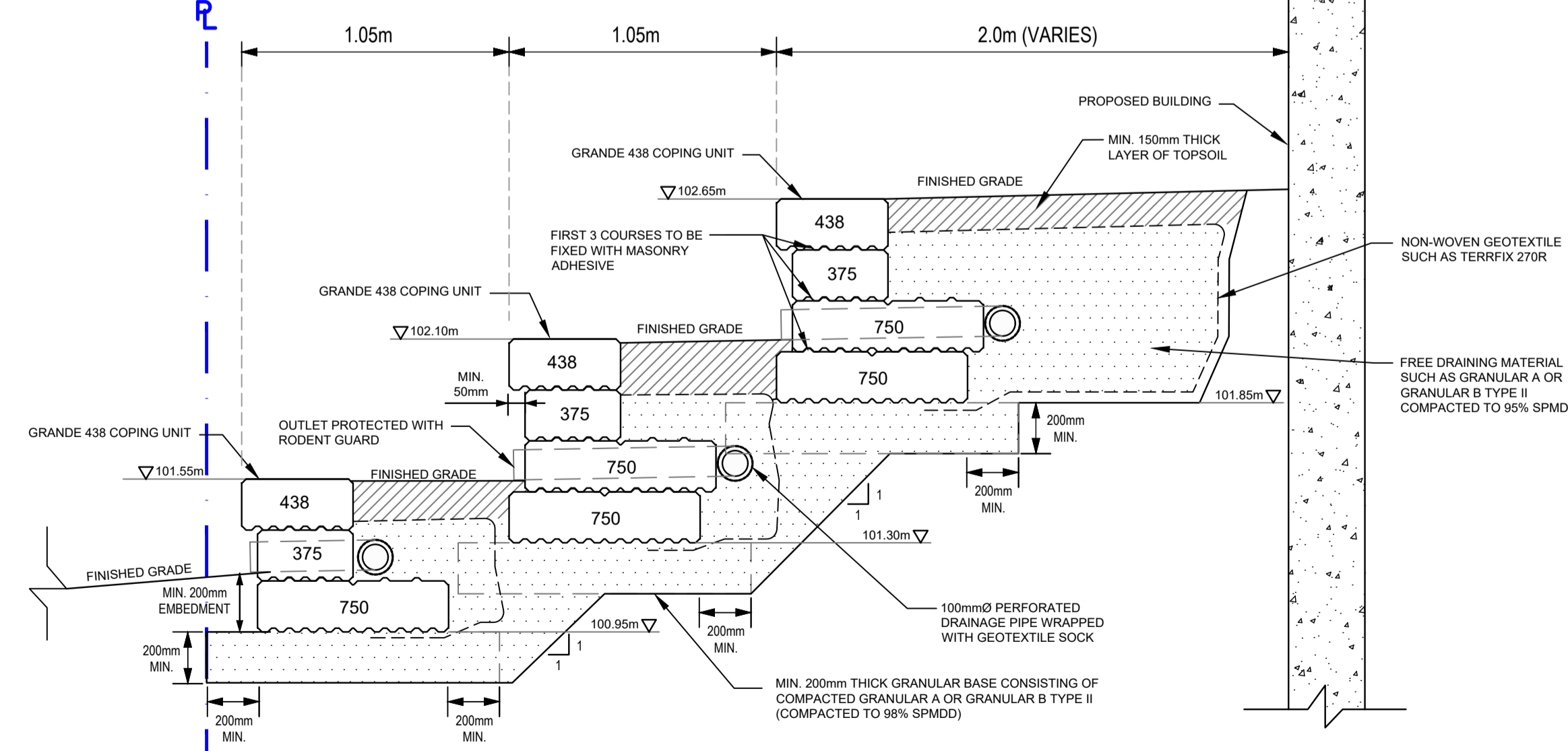
GRADING PLAN:

SCALE 1:400



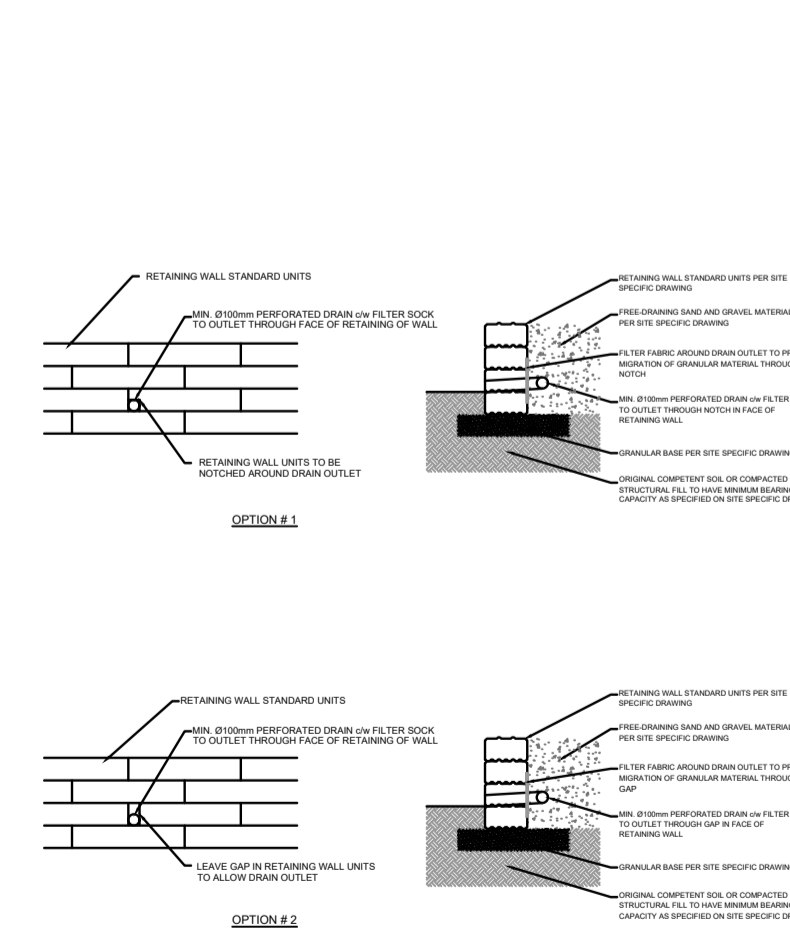
CROSS SECTION B-B:

SCALE 1:20



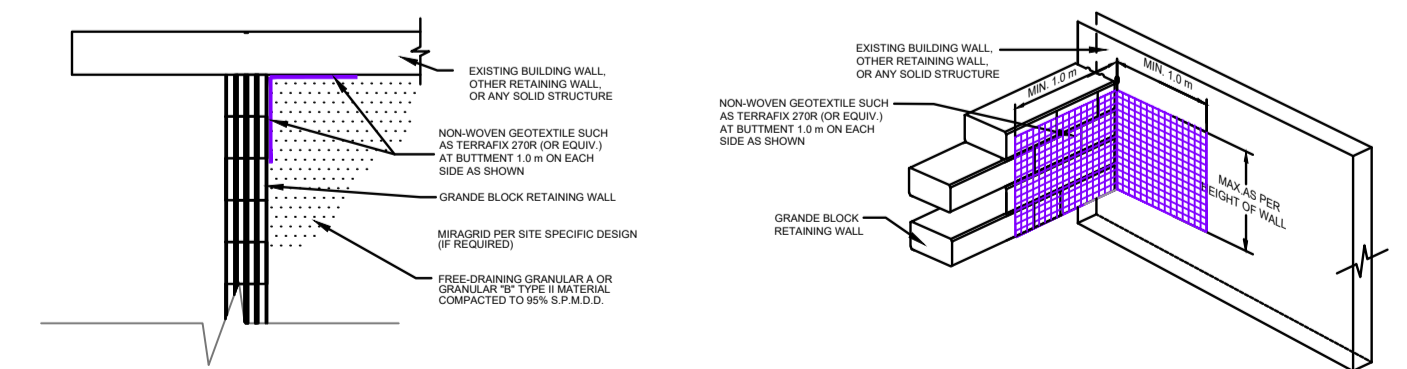
DRAINAGE DETAIL:

SCALE - N.T.S.



DETAIL 1:

N.T.S.



NO.	REVISIONS	DATE	INITIAL
2	AS PER CLIENT COMMENTS	28/10/2022	JV
1	AS PER REVISED GRADING PLAN	18/10/2022	BN

CANADIAN RENTAL DEVELOPMENT SERVICES
PROPOSED RETAINING WALLS
 1050 CANADIAN SHIELD AVENUE
 OTTAWA, ONTARIO
GRANDE RETAINING WALL DESIGN (G1, G2, & G3)

Stamp: 28/10/2022
 J. R. VILLENEUVE
 100504344
 PROVINCE OF ONTARIO

Stamp: 28/10/2022
 F. I. ABOU-SEID
 100156744
 PROVINCE OF ONTARIO

Scale: AS SHOWN	File No.: PG5371
Drawn by: NFRV	Drawing No.:
Checked by: JV	PG5371-3
Approved by: FA	Revision No.: 1
Date: 04/2022	