

CAMPEAU DRIVE

1050 CANADIAN SHIELD AVENUE

CANADIAN SHIELD AVENUE

GENERAL NOTES	
#NOTE	DESCRIPTION
1	PROPERTY LINE
2	SETBACKS
3	HEIGHT LIMIT MAX. 23m OR 6 STOREYS
4	GROUND FLOOR - OUTLINE
5	2ND FLOOR - OUTLINE
6	POOL - OUTLINE
7	COMMERCIAL TERRACE
8	PRIVATE TERRACE
9	PRIVATE BALCONY
10	FENCE
11	DEPRESSED CURB
12	DECORATIVE FREIZE PATTERN T.B.C.
13	EXISTING FIRE HYDRANT
14	RETAINING WALL
15	HYDRO KIOSK
16	LAMP STANDARD
17	ELEVATOR PIT
18	CANOPY
19	CANOPY FOOTPRINT
20	TRANSFORMER
21	WATER TANK ACCESS
22	P2 LEVEL - OUTLINE
23	FIRE DEPARTMENT CONNECTION
24	BIKE RACK BY HAUSSER
25	ELEVATING PLATFORM

LINE TYPE LEGEND	
LINE TYPE	DESCRIPTION
---	PROPERTY LINE
---	REQUIRED SETBACKS

SURFACE LEGEND	
SYMBOL	DESCRIPTION
[Pattern]	PAVING (ON-SLAB) LARGE PATIO TILES
[Pattern]	PAVING 2 (ON-GRADE) 300 x 600 FLAME GRANITE, NEWTON BROWN
[Pattern]	ASPHALT
[Pattern]	CONCRETE ON-GRADE
[Pattern]	STONE BALLAST ROOF
[Pattern]	LANDSCAPING
[Pattern]	EXISTING BUILDING

SITE STATISTICS	
ITEM	VALUE
LOT AREA	10 917 m ²
FOOTPRINT	6 597 m ²
GROSS BUILDING AREA ABOVE GRADE	28 482 m ²
GROSS BUILDING AREA BELOW AVERAGE GRADE (BUILDING & PARKADE)	17 889 m ²
GROSS FLOOR AREA (ABOVE + BELOW GRADE)	46 371 m ²

NUMBER OF UNITS	
FLOOR	UNITS
P1 FLOOR	4 FLEX SPACES
FIRST FLOOR	45 UNITS
2nd FLOOR	55 UNITS
3rd FLOOR	54 UNITS
4th FLOOR	31 UNITS
5th FLOOR	30 UNITS
6th FLOOR	19 UNITS
TOTAL	234 UNITS

NUMBER OF PARKING SPACES	
TYPE	SPACES
1.0 Residents (parking space / dwelling unit)	238
0.2 Visitors (parking space / dwelling unit)	48
Commercial parking	16
TOTAL PARKING REQUIRED	302
TOTAL PARKING PROVIDED (INCLUDED BARRIER FREE PARKING)	352
MINIMUM BARRIER FREE PARKING REQUIRED	10
PROVIDED	10

ZONE PROVISIONS BLOCK 2 - 1050 CANADIAN SHIELD		
ZONING BY-LAW 2008 250		
CURRENT ZONING: MC15 (2027)		
PERMITTED USES	REQUIRED	PROPOSED
FRONT YARD SETBACK (GREAT LAKES AVENUE (WEST LOT LINE))	MAX. 0.5m OR 2m WHERE A PATIO IS PROVIDED	2 m MIN / 4.6 m MAX
SIDE YARD CAMPEAU DRIVE SETBACK (NORTH LOT LINE)	6.0 m MIN. 6.5 m MAX.	6.0 m MIN. 13.3 m MAX.
SIDE YARD SETBACK CANADIAN SHIELD AVENUE (SOUTH LOT LINE)	MAX. 0.5m OR 2m WHERE A PATIO IS PROVIDED	3.1 m MIN / 5.2m MAX
INTERIOR REAR YARD SETBACK (EAST LOT LINE)	6.0 m	6.0 m
BUILDING HEIGHT	23.0 m MAX.	6 STOREYS + P1 / LEVEL ENTRANCE
WINDOWS ON WALL FACING STREET	MIN 50% OF LENGTH	CAMPEAU DRIVE 55% CANADIAN SHIELD AVE. 53% GREAT LAKES AVE. 55%
LANDSCAPE AREA	30% MIN. (3 275 m ²)	32.7 % (3 568m ²)
MINIMUM BICYCLE PARKING	0.5 PER DWELLING UNIT 119+2 SPACES	124
TOTAL PRIVATE AMENITY SPACE	6 m ² PER DWELLING UNIT 1 428 m ²	2 622 m ²
TOTAL COMMUNAL AMENITY AREA	50% OF PRIVATE AMENITY SPACES 735 m ²	1016 m ² (INDOOR) 120 m ² (OUTDOOR) 1136 m ² (TOTAL)

GENERAL NOTES

1. Documents d'architecture sont la propriété exclusive de NEUF architect(e)s et ne peuvent être utilisés, reproduits ou copiés sans autorisation écrite préalable. / These architectural documents are the exclusive property of NEUF architect(e)s and cannot be used, copied or reproduced without written pre-authorization.

2. Les dimensions apparaissant sur les documents doivent être vérifiées par l'entrepreneur avant le début des travaux. / All dimensions which appear on the documents must be verified by the contractor before to start the work.

3. Veuillez aviser l'architecte de toute dimension erronée et/ou divergences entre ces documents et ceux des autres professionnels. / The architect must be notified of all errors, omissions and discrepancies between these documents and those of the others professionals.

4. Les dimensions sur ces documents doivent être lues et non mesurées. / The dimensions on these documents must be read and not measured.

ARCHITECTES Architect
NEUF architect(e)s
 630, boul. René-Lévesque O. 32e étage, Montréal QC H3B 1S6
 T 514 847 1117 NEUFarchitectes.com

ARCHITECTURE DE PAYSAGE Landscape Architect
Gino Aiello
 50 Camelot Drive, Nepean, ON K2G 5X8
 T 613 852 1343

ARPENTEUR Surveyor
Fairhall Moffatt Woodland
 100-600, Terry Fox Drive, Kanata, Ontario K2L 4B6
 T 613 591 2580 F 613 591 1495

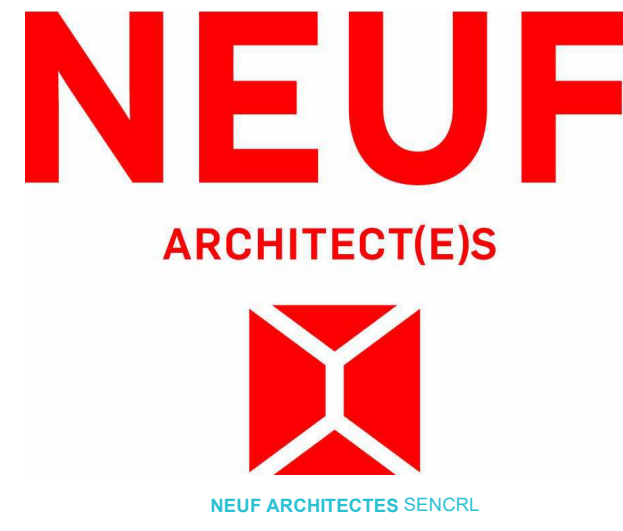
CIVIL Civil
NOVATECH
 240 Michael Cowpland Drive, Suite 200, Ottawa, ON K2M 1P6
 T 613 254 9643 novatech-eng.com

INGÉNIEUR ÉLECTRIQUE & MÉCANIQUE
 Electrical & Mechanical Engineer
NATIONAL MULTI-RESIDENTIAL INNOVATIVE DESIGN
 555 Legget Drive, Tower A, Suite 212, Ottawa, ON K2K 2X3
 T 613 224 2761 Fax 613 951 0566

INGÉNIEUR EN STRUCTURE Structural Engineer
CIMA+
 740, rue Notre-Dame O., Montréal, QC H3C 3X6
 T 514 337 2462

URBANISTE Urban planner
NOVATECH
 240 Michael Cowpland Drive, Suite 200, Ottawa, ON K2M 1P6
 T 613 254 9643 novatech-eng.com

SCEAU / Seal



206-555 Legget Dr., Tower A, Ottawa, ON K2K 2X3
 T 613 591 9090 F 613 591 9095

OUVRAGE Project
 1050 Canadian Shield INC.
CARRÉ SAINT-LOUIS

EMPLACEMENT Location NO PROJET No.
 1050 Canadian Shield, 12461.00
 KANATA, ON

NO RELEASE / VERSION DATE (ss-mm-jj)
 1.A ISSUED FOR SITE PLAN 2021 08 10
 1.7 ISSUED FOR SITE PLAN REVISION 02 2021 12 15
 1.9 ISSUED FOR SITE PLAN REVISION 03 2022 04 18

Preliminary DO NOT USE FOR CONSTRUCTION

DESSIN PAR Drawn by A.G. VÉRIFIÉ PAR Checked by K.P. / B.S.J.
 DATE (ss-mm-jj) 22/01/21 ÉCHELLE Scale Comme indiqué

SITE PLAN

PREVIOUS REVISION: 1.8 REVISION Revision 1.9 NO. DESSIN Dwg Number
1.9 **A060**
 #18567

APPROVED
 By Allison Hamlin at 5:26 pm, Nov 14, 2022

A Hamlin

ALLISON HAMLIN
 MANAGER (A), DEVELOPMENT REVIEW WEST
 PLANNING, REAL ESTATE & ECONOMIC DEVELOPMENT
 DEPARTMENT, CITY OF OTTAWA



NORTH ELEVATION (CAMPEAU DRIVE)
1:200

GENERAL NOTES	
# NOTE	DESCRIPTION
1	PROPERTY LINE
2	SETBACKS
3	HEIGHT LIMIT MAX. 23m OR 6 STOREYS
4	GROUND FLOOR - OUTLINE
5	2ND FLOOR - OUTLINE
6	POOL - OUTLINE
7	COMMERCIAL TERRACE
8	PRIVATE TERRACE
9	PRIVATE BALCONY
10	FENCE
11	DEPRESSED CURB
12	DECORATIVE FREIZE PATTERN T.B.C.
13	EXISTING FIRE HYDRANT
14	RETAINING WALL
15	HYDRO KIOSK
16	LAMP STANDARD
17	ELEVATOR PIT
18	CANOPY
19	CANOPY FOOTPRINT
20	TRANSFORMER
21	WATER TANK ACCESS
22	P2 LEVEL - OUTLINE
23	FIRE DEPARTMENT CONNECTION
24	BIKE RACK BY HAUSSER
25	ELEVATING PLATFORM

PLAN SYMBOL LEGEND	
	RAILING OR GUARDRAIL TYPE - SEE PAGE A504 FOR DETAILS
	GENERAL NOTES - SEE LEGEND FOR DESCRIPTION
	WINDOW OR CURTAIN WALL TYPE - SEE PAGE A802 & A803 FOR DETAILS
	WALL TYPE - SEE PAGE A800 & A801 FOR DETAILS
	ROOF TYPE - SEE PAGE A800 & A801 FOR DETAILS
	DOOR NUMBER - SEE PAGE A800 & A801 FOR DETAILS
	ROOM NUMBER - SEE PLANS FOR DETAILS
	EXTERIOR MATERIAL TYPE - SEE PAGE A400 - A403 FOR LEGEND

LINE TYPE LEGEND	
	PROPERTY LINE
	REQUIRED SETBACKS

NOTES GÉNÉRALES: General Notes

- Ces documents d'architecture sont la propriété exclusive de NEUF architect(e)s et ne pourront être utilisés, reproduits ou copiés sans autorisation écrite préalable. / These architectural documents are the exclusive property of NEUF architect(e)s and cannot be used, copied or reproduced without written pre-authorization.
- Les dimensions apparaissant sur ces documents doivent être vérifiées par l'entrepreneur avant le début des travaux. / All dimensions which appear on the documents must be verified by the contractor before to start the work.
- Veuillez aviser l'architecte de toute dimension erronée ou d'incohérence entre ces documents et ceux des autres professionnels. / The architect must be notified of all errors, omissions and discrepancies between these documents and those of the others professionals.
- Les dimensions sur ces documents doivent être lues et non mesurées. / The dimensions on these documents must be read and not measured.

ARCHITECTES Architect
NEUF architect(e)s
630, boul. René-Lévesque O. 32e étage, Montréal QC H3B 1S6
T 514 847 1117 NEUFarchitectes.com

ARCHITECTURE DE PAYSAGE Landscape Architect
Gino Aiello
50 Camelot Drive, Nepean, ON K2G 5X8
T 613 852 1343

ARPENTEUR Surveyor
Fairhall Moffatt Woodland
100-600, Terry Fox Drive, Kanata, Ontario K2L 4B6
T 613 591 2580 F 613 591 1495

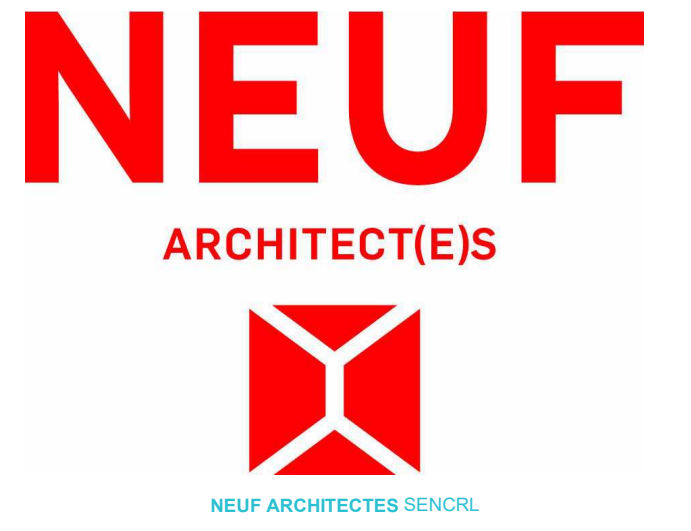
CIVIL Civil
NOVATECH
240 Michael Cowpland Drive, Suite 200, Ottawa, ON K2M 1P6
T 613 254 9643 novatech-eng.com

INGÉNIEUR ÉLECTRIQUE & MÉCANIQUE
Electrical & Mechanical Engineer
NATIONAL MULTI-RESIDENTIAL INNOVATIVE DESIGN
555 Legget Drive, Tower A, Suite 212, Ottawa, ON K2K 2X3
T 613 224 2761 Fax 613 951 0586

INGÉNIEUR EN STRUCTURE Structural Engineer
CIMA+
740, rue Notre-Dame O., Montréal, QC H3C 3X6
T 514 337 2462

URBANISTE Urban planner
NOVATECH
240 Michael Cowpland Drive, Suite 200, Ottawa, ON K2M 1P6
T 613 254 9643 novatech-eng.com

SCEAU / Seal



206-555 Legget Dr., Tower A, Ottawa, ON K2K 2X3
T 613 591 9090 F 613 591 9095

OUVRAGE Project
1050 Canadian Shield INC.
CARRÉ SAINT-LOUIS

EMPLACEMENT Location NO PROJET No.
1050 Canadian Shield, 12461.00
KANATA, ON

NO. RELEASE / VERSION	DATE (ss-mm-jj)
1.A ISSUED FOR SITE PLAN	2021 08 10
1.7 ISSUED FOR SITE PLAN REVISION 02	2021 12 15
1.9 ISSUED FOR SITE PLAN REVISION 03	2022 04 18

Preliminary
DO NOT USE FOR
CONSTRUCTION

DESSINÉ PAR Drawn by
A.G.

VÉRIFIÉ PAR Checked by
K.P. / B.S.J.

DATE (ss-mm-jj)
21/08/20

ÉCHELLE Scale
Comme
indiqué

TITRE DU DESSIN Drawing Title
NORTH & SOUTH ELEVATION

PREVIOUS REVISION: 1.8 NO. DESSIN Dwg Number
REVISION Revision 1.9

1.9 **A400**
#18567



SOUTH ELEVATION (CANADIAN SHIELD AVENUE)
1:200

EXTERIOR MATERIAL LEGEND	
# NOTE	DESCRIPTION
A	PRECAST - PATTERN STONE 750 x 450 mm, FINISH LIGHT SANDBLAST, COLOUR LIGHT BEIGE
A1	PRECAST - FINISH ACID ETCH, COLOUR LIGHT BEIGE
B	PRECAST - PATTERN STONE 590 x 280 mm, FINISH LIGHT SANDBLAST, COLOUR BEIGE
B1	PRECAST - FINISH ACID ETCH, COLOUR BEIGE
B2	PRECAST - FINISH RETARDED, COLOUR BEIGE
C	PRECAST - PATTERN STONE 590 x 280 mm, LIGHT SANDBLAST, COLOUR LIGHT BEIGE
C1	PRECAST - FINISH RETARDED, COLOUR LIGHT BEIGE
D	PRECAST - FINISH LIGHT SANDBLAST, COLOUR LIGHT BEIGE
E	PRECAST - PATTERN US FORMLINER 2/71 DOWN, COLOUR LIGHT GREY
E1	PRECAST - FINISH ACID ETCH, COLOUR LIGHT GREY
F	PRECAST - PATTERN US FORMLINER 2/71 DOWN, COLOUR GREY
F1	PRECAST - FINISH ACID ETCH, COLOUR DARK GREY
G	PRECAST - CORNICE ALPACON, SMOOTH FINISH
H1	PRECAST - EXTRA SMOOTH FINISH, COLOUR WHITE
I	EIFS - SANDED FINISH, COLOUR T.B.C.
K	GRANITE INSERTION, COLOUR WHITE
K	GRANITE INSERTION, COLOUR WHITE
L	METAL PANEL - METALLIC FINISH, COLOUR METALLIC CHAMPAGNE FV9205
M	METAL PANEL - MATTE FINISH, COLOUR GREY
N	MASONRY - PATETERN STONE, COLOUR AND FINISH T.B.D.

PRINTED ON 2022-04-27 15:30:49] BIM 360://12461_CARRÉ ST-LOUIS/1050CS_12461_ARC_BDD_R20.rvt

NO. DESSIN Dwg Number
12461.00
#18567

APPROVED
By Allison Hamlin at 5:26 pm, Nov 14, 2022

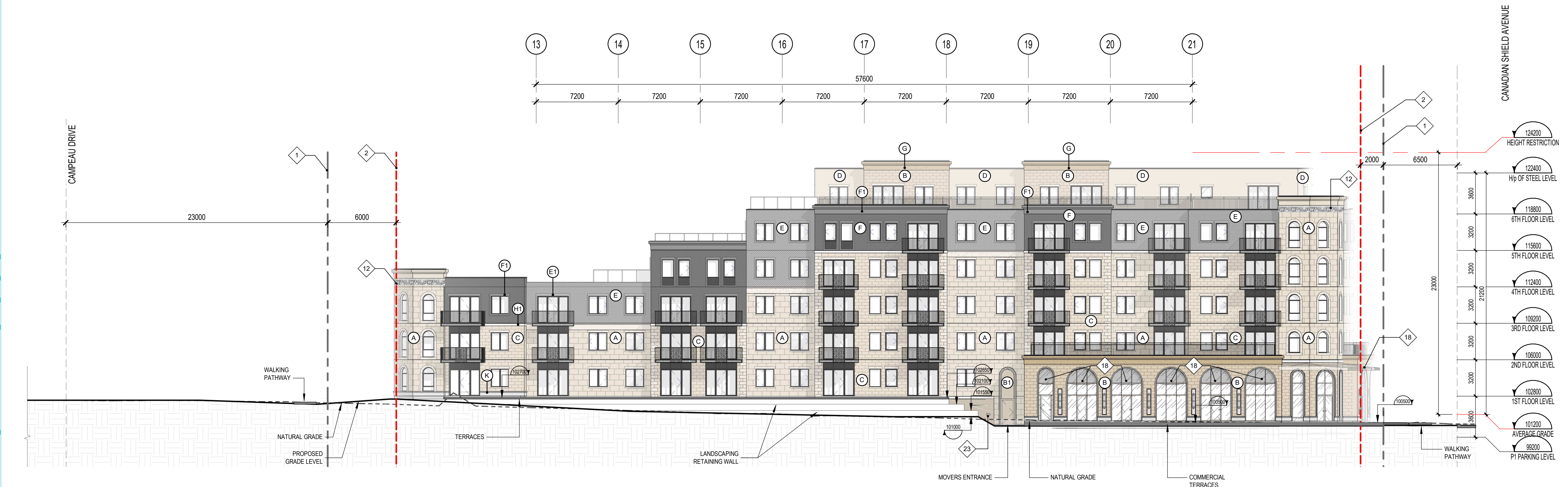
Allison Hamlin
ALLISON HAMLIN
MANAGER (A), DEVELOPMENT REVIEW WEST
PLANNING, REAL ESTATE & ECONOMIC DEVELOPMENT
DEPARTMENT, CITY OF OTTAWA



EAST ELEVATION (NEIGHBOUR SIDE)
1 : 200

GENERAL NOTES	
#NOTE	DESCRIPTION
1	PROPERTY LINE
2	SETBACKS
3	HEIGHT LIMIT MAX. 23m OR 6 STOREYS
4	GROUND FLOOR - OUTLINE
5	2ND FLOOR - OUTLINE
6	POOL - OUTLINE
7	COMMERCIAL TERRACE
8	PRIVATE TERRACE
9	PRIVATE BALCONY
10	FENCE
11	DEPRESSED CURB
12	DECORATIVE FREIZE PATTERN T.B.C.
13	EXISTING FIRE HYDRANT
14	RETAINING WALL
15	HYDRO KIOSK
16	LAMP STANDARD
17	ELEVATOR FIT
18	CANOPY
19	CANOPY FOOTPRINT
20	TRANSFORMER
21	WATER TANK ACCESS
22	P2 LEVEL - OUTLINE
23	FIRE DEPARTMENT CONNECTION
24	BIKE RACK BY HAUSSER
25	ELEVATING PLATFORM

PLAN SYMBOL LEGEND	
	RAILING OR GUARDRAIL TYPE • SEE PAGE A504 FOR DETAILS
	GENERAL NOTES • SEE LEGEND FOR DESCRIPTION
	WINDOW OR CURTAIN WALL TYPE • SEE PAGE A802 & A803 FOR DETAILS
	WALL TYPE • SEE PAGE A800 & A801 FOR DETAILS
	ROOF TYPE • SEE PAGE A800 & A801 FOR DETAILS
	DOOR NUMBER • SEE PAGE A900 & A901 FOR DETAILS
	ROOM NUMBER • SEE PLANS FOR DETAILS
	EXTERIOR MATERIAL TYPE • SEE PAGE A400 - A403 FOR LEGEND



WEST ELEVATION (GREAT LAKES AVENUE)
1 : 200

EXTERIOR MATERIAL LEGEND	
#NOTE	DESCRIPTION
A	PRECAST - PATTERN STONE 700 X 400 mm, FINISH LIGHT SANDBLAST, COLOUR LIGHT BEIGE
A1	PRECAST - FINISH ACID ETCH, COLOUR LIGHT BEIGE
B	PRECAST - PATTERN STONE 500 X 280 mm, FINISH LIGHT SANDBLAST, COLOUR BEIGE
B1	PRECAST - FINISH ACID ETCH, COLOUR BEIGE
B2	PRECAST - FINISH RETARDED, COLOUR BEIGE
C	PRECAST - PATTERN STONE 500 X 280 mm, LIGHT SANDBLAST, COLOUR LIGHT BEIGE
C1	PRECAST - FINISH RETARDED, COLOUR LIGHT BEIGE
D	PRECAST - FINISH LIGHT SANDBLAST, COLOUR LIGHT BEIGE
E	PRECAST - PATTERN US FORMLINER 2711 DDN, COLOUR LIGHT GREY
E1	PRECAST - FINISH ACID ETCH, COLOUR LIGHT GREY
F	PRECAST - PATTERN US FORMLINER 2711 DDN, COLOUR GREY
F1	PRECAST - FINISH ACID ETCH, COLOUR DARK GREY
G	PRECAST - CORNICE AURORA, SMOOTH FINISH
H1	PRECAST - EXTRA SMOOTH FINISH, COLOUR WHITE
I	EPS - SANDED FINISH, COLOUR T.B.C.
J	GRANITE INSERTION, COLOUR WHITE
K	GRANITE INSERTION, COLOUR WHITE
L	METAL PANEL - METALIC FINISH, COLOUR METALLIC CHAMPAGNE P/2025
M	METAL PANEL - MATTE FINISH, COLOUR GREY
N	MASONRY - PATETERN STONE, COLOUR AND FINISH T.B.C.

NOTES GÉNÉRALES / General Notes

- Ces documents d'architecture sont la propriété exclusive de NEUF architectes et ne pourront être utilisés, reproduits ou copiés sans autorisation écrite préalable. / These architectural documents are the exclusive property of NEUF architectes and cannot be used, copied or reproduced without written pre-authorization.
- Les dimensions apparaissant sur ces documents doivent être vérifiées par l'entrepreneur avant le début des travaux. / All dimensions which appear on the documents must be verified by the contractor before to start the work.
- Vous devez aviser l'architecte de toute dimension erronée et/ou divergences entre ces documents et ceux des autres professionnels. / The architect must be notified of all errors, omissions and discrepancies between these documents and those of the others professionals.
- Les dimensions sur ces documents doivent être lues et non mesurées. / The dimensions on these documents must be read and not measured.

ARCHITECTES Architect
NEUF architect(e)s
630, boul. René-Lévesque O. 32e étage, Montréal QC H3B 1S6
T 514 847 1117 NEUFarchitectes.com

ARCHITECTURE DE PAYSAGE Landscape Architect
Gino Aiello
50 Camelot Drive, Nepean, ON K2G 5X8
T 613 852 1343

ARPENTEUR Surveyor
Fairhall Moffatt Woodland
100-600, Terry Fox Drive, Kanata, Ontario K2L 4B6
T 613 591 2580 F 613 591 1495

CIVIL Civil
NOVATECH
240 Michael Cowpland Drive, Suite 200, Ottawa, ON K2M 1P6
T 613 254 9643 novatech-eng.com

INGÉNIEUR ÉLECTRIQUE & MÉCANIQUE
Electrical & Mechanical Engineer
NATIONAL MULTI-RESIDENTIAL INNOVATIVE DESIGN
555 Legget Drive, Tower A, Suite 212, Ottawa, ON K2K 2X3
T 613 224 2761 Fax 613 951 0566

INGÉNIEUR EN STRUCTURE Structural Engineer
CIMA+
740, rue Notre-Dame O., Montréal, QC H3C 3X6
T 514 337 2462

URBANISTE Urban planner
NOVATECH
240 Michael Cowpland Drive, Suite 200, Ottawa, ON K2M 1P6
T 613 254 9643 novatech-eng.com

SCEAU / Seal

ONTARIO ASSOCIATION OF ARCHITECTS
KIM PHAM
LICENCE 9305

NEUF ARCHITECT(E)S

NEUF ARCHITECTES SENCLR

★★★★★

LÉPINE

206-555 Legget Dr., Tower A, Ottawa, ON K2K 2X3
T 613 591 9090 F 613 591 9095

OUVRAGE Project
1050 Canadian Shield INC.
CARRÉ SAINT-LOUIS

EMPLACEMENT Location NO PROJET No.
1050 Canadian Shield, 12461.00
KANATA, ON

NO. RELEASE / VERSION	DATE (aa-mm-jj)
1.A	ISSUED FOR SITE PLAN 2021 08 10
1.7	ISSUED FOR SITE PLAN REVISION 02 2021 12 15
1.9	ISSUED FOR SITE PLAN REVISION 03 2022 04 18

Preliminary
DO NOT USE FOR CONSTRUCTION

DESSINÉ PAR Drawn by A.G. VÉRIFIÉ PAR Checked by K.P. / BJSJ
DATE (aa-mm-jj) 21/08/20 ÉCHELLE Scale Comme indiqué

TITRE DU DESSIN Drawing Title
EAST & WEST ELEVATION

PREVIOUS REVISION: 1.8 NO. DESSIN Dwg Number
REVISION Revision 1.9
1.9 **A401**
#18567