

GENERAL NOTES:

- COORDINATE AND SCHEDULE ALL WORK WITH OTHER TRADES AND CONTRACTORS.
- DETERMINE THE EXACT LOCATION, SIZE, MATERIAL AND ELEVATION OF ALL EXISTING UTILITIES PRIOR TO COMMENCING CONSTRUCTION. PROTECT AND ASSUME RESPONSIBILITY FOR ALL EXISTING UTILITIES WHETHER OR NOT SHOWN ON THIS DRAWING.
- OBTAIN ALL NECESSARY PERMITS AND APPROVALS FROM THE CITY OF OTTAWA BEFORE COMMENCING CONSTRUCTION.
- BEFORE COMMENCING CONSTRUCTION OBTAIN AND PROVIDE PROOF OF COMPREHENSIVE, ALL RISK AND OPERATIONAL LIABILITY INSURANCE FOR \$5,000,000.00. INSURANCE POLICY TO NAME OWNERS, ENGINEERS AND ARCHITECTS AS CO-INSURED AND THE CITY OF OTTAWA AS THIRD PARTY.
- RESTORE ALL DISTURBED AREAS ON-SITE AND OFF-SITE, INCLUDING TRENCHES AND SURFACES ON PUBLIC ROAD ALLOWANCES TO EXISTING CONDITIONS OR BETTER TO THE SATISFACTION OF THE CITY OF OTTAWA AND ENGINEER.
- REMOVE FROM SITE ALL EXCESS EXCAVATED MATERIAL, ORGANIC MATERIAL AND DEBRIS UNLESS OTHERWISE INSTRUCTED BY ENGINEER. EXCAVATE AND REMOVE FROM SITE ANY CONTAMINATED MATERIAL. ALL CONTAMINATED MATERIAL SHALL BE DISPOSED OF AT A LICENSED LANDFILL FACILITY.
- ALL ELEVATIONS ARE GEODETIC.
- REFER TO GEOTECHNICAL REPORT (No. PG5371-1, DATED MAY 19, 2021), PREPARED BY PATERSON GROUP FOR SUBSURFACE CONDITIONS, CONSTRUCTION RECOMMENDATIONS, AND GEOTECHNICAL INSPECTION REQUIREMENTS. THE GEOTECHNICAL CONSULTANT IS TO REVIEW ON-SITE CONDITIONS AFTER EXCAVATION PRIOR TO PLACEMENT OF THE GRANULAR MATERIAL.
- REFER TO ARCHITECT'S AND LANDSCAPE ARCHITECT'S DRAWINGS FOR BUILDING AND HARDSURFACE AREAS AND DIMENSIONS.
- REFER TO STORMWATER MANAGEMENT REPORT (R-2021-097) PREPARED BY NOVATECH ENGINEERING CONSULTANTS LTD.
- SAW CUT AND KEY GRIND ASPHALT AT ALL ROAD CUTS AND ASPHALT TIE IN POINTS AS PER CITY OF OTTAWA STANDARDS (R10).
- PROVIDE LINE/PARKING PAINTING AS REQUIRED FOR REINSTATEMENT.
- CONTRACTOR TO PROVIDE THE CONSULTANT WITH A GENERAL PLAN OF SERVICES INDICATING ALL SERVICING AS-BUILT INFORMATION SHOWN ON THIS PLAN. AS-BUILT INFORMATION MUST INCLUDE: PIPE MATERIAL, SIZES, LENGTHS, SLOPES, INVERT AND TIG ELEVATIONS, STRUCTURE LOCATIONS, VALVE AND HYDRANT LOCATIONS, TWM ELEVATIONS AND ANY ALIGNMENT CHANGES, ETC.

SEWER NOTES:

- SPECIFICATIONS:

ITEM	SPEC. No.	REFERENCE
CATCHBASIN (600x600mm)	705.010	OPSD
STORM / SANITARY MANHOLE (1200Ø)	701.010	OPSD
CB, FRAME & COVER	400.020	OPSD
STORM / SANITARY MH FRAME	S25	CITY OF OTTAWA
SANITARY COVER	S24	CITY OF OTTAWA
STORM COVER (CLOSED)	S24.1	CITY OF OTTAWA
STORM COVER (OPEN)	S28.1	CITY OF OTTAWA
SEWER TRENCH	S6 & S7	CITY OF OTTAWA
STORM SEWER	PVC DR 35	CITY OF OTTAWA
SANITARY SEWER	PVC DR 35	CITY OF OTTAWA
ELBOW CB	S31	CITY OF OTTAWA
TEE CB	S30	CITY OF OTTAWA
- SERVICES ARE TO BE CONSTRUCTED TO 1.0m FROM FACE OF BUILDING AT A MINIMUM SLOPE OF 1.0%.
- PIPE BEDDING, COVER AND BACKFILL ARE TO BE COMPACTED TO AT LEAST 95% OF THE STANDARD PROCTOR MAXIMUM DRY DENSITY. THE USE OF CLEAR CRUSHED STONE AS A BEDDING LAYER SHALL NOT BE PERMITTED.
- FLEXIBLE CONNECTIONS ARE REQUIRED FOR CONNECTING PIPES TO MANHOLES (FOR EXAMPLE KOR-N-SEAL, PSX, POSITIVE SEAL AND DURASEAL). THE CONCRETE CRADLE FOR THE PIPE CAN BE ELIMINATED.
- THE OWNER SHALL REQUIRE THAT THE SITE SERVICING CONTRACTOR PERFORM FIELD TESTS FOR QUALITY CONTROL OF ALL SANITARY SEWERS. LEAKAGE TESTING SHALL BE COMPLETED IN ACCORDANCE WITH OPS5 410.07.16, 410.07.16.04 AND 407.07.24. DYE TESTING IS TO BE COMPLETED ON ALL SANITARY SERVICES TO CONFIRM PROPER CONNECTION TO THE SANITARY SEWER MAIN. THE FIELD TESTS SHALL BE PERFORMED IN THE PRESENCE OF A CERTIFIED PROFESSIONAL ENGINEER WHO SHALL SUBMIT A CERTIFIED COPY OF THE TEST RESULTS.
- STORM MANHOLES AND CBMHS ARE TO HAVE 300mm SUMPUS UNLESS OTHERWISE INDICATED.
- CONTRACTOR TO TELEVIEW (CCTV) ALL PROPOSED SEWERS, 200mmØ OR GREATER PRIOR TO BASE COURSE ASPHALT. UPON COMPLETION OF CONTRACT, THE CONTRACTOR IS RESPONSIBLE TO FLUSH AND CLEAN ALL SEWERS & APPURTENANCES.
- DYE TESTING IS TO BE COMPLETED ON SANITARY SERVICES TO CONFIRM PROPER CONNECTION TO THE SANITARY SEWER MAIN.
- A SANITARY BACKWATER VALVE ON THE SANITARY SERVICE IS REQUIRED.
- ALL DRAINAGE FOR THE UNDERGROUND PARKING LEVELS IS REQUIRED TO BE DIRECTED TO THE SANITARY SEWER.

EROSION AND SEDIMENT CONTROL NOTES:

- THE OWNER AGREES TO PREPARE AND IMPLEMENT AN EROSION AND SEDIMENT CONTROL PLAN TO THE SATISFACTION OF THE CITY OF OTTAWA, APPROPRIATE TO THE SITE CONDITIONS, PRIOR TO UNDERTAKING ANY SITE ALTERATIONS (FILLING, GRADING, REMOVAL OF VEGETATION, ETC.) AND DURING ALL PHASES OF SITE PREPARATION AND CONSTRUCTION IN ACCORDANCE WITH THE CURRENT BEST MANAGEMENT PRACTICES FOR EROSION AND SEDIMENT CONTROL SUCH AS BUT NOT LIMITED TO INSTALLING FILTER CLOTHS ACROSS MANHOLE/CATCHBASIN LIDS TO PREVENT SEDIMENTS FROM ENTERING STRUCTURES AND INSTALL AND MAINTAIN A LIGHT DUTY SILT FENCE BARRIER AS REQUIRED.
- THE CONTRACTOR SHALL PLACE FILTER CLOTH UNDER THE CATCHBASIN AND MANHOLE GRATES FOR THE DURATION OF CONSTRUCTION AND WILL REMAIN IN PLACE DURING ALL PHASES OF CONSTRUCTION.
- SILT FENCING FOR ENTIRE PERIMETER OF SITE, SHALL BE UTILIZED TO CONTROL EROSION FROM THE SITE DURING CONSTRUCTION.
- THE CONTRACTOR ACKNOWLEDGES THAT FAILURE TO IMPLEMENT EROSION AND SEDIMENT CONTROL MEASURES MAY BE SUBJECT TO PENALTIES IMPOSED BY ANY APPLICABLE REGULATORY AGENCY.
- EROSION AND SEDIMENT CONTROL MEASURES MAY BE MODIFIED IN THE FIELD AT THE DISCRETION OF THE CITY OF OTTAWA SITE INSPECTOR OR CONSERVATION AUTHORITY.

GRADING NOTES:

- ALL TOPSOIL, ORGANIC OR DELETERIOUS MATERIAL MUST BE ENTIRELY REMOVED FROM BENEATH THE PROPOSED PAVED AREAS AS DIRECTED BY THE SITE ENGINEER OR GEOTECHNICAL ENGINEER.
- EXPOSED SUBGRADES IN PROPOSED PAVED AREAS SHOULD BE PROOF ROLLED WITH A LARGE STEEL DRUM ROLLER AND INSPECTED BY THE GEOTECHNICAL ENGINEER PRIOR TO THE PLACEMENT OF GRANULARS.
- ANY SOFT AREAS EVIDENT FROM THE PROOF ROLLING SHOULD BE SUB-EXCAVATED AND REPLACED WITH SUITABLE MATERIAL THAT IS FROST COMPATIBLE WITH THE EXISTING SOILS AS RECOMMENDED BY THE GEOTECHNICAL ENGINEER.
- THE GRANULAR BASE SHOULD BE COMPACTED TO AT LEAST 100% OF THE STANDARD PROCTOR MAXIMUM DRY DENSITY VALUE. ANY ADDITIONAL GRANULAR FILL USED BELOW THE PROPOSED PAVEMENT SHOULD BE COMPACTED TO AT LEAST 95% OF THE STANDARD PROCTOR MAXIMUM DRY DENSITY VALUE.
- MINIMUM OF 2% GRADE FOR ALL GRASS AREAS UNLESS OTHERWISE NOTED.
- MAXIMUM TERRACING GRADE TO BE 3:1 UNLESS OTHERWISE NOTED.
- ALL GRADES BY CURBS ARE EDGE OF PAVEMENT GRADES UNLESS OTHERWISE INDICATED.
- ALL CURBS SHALL BE BARRIER CURB (150mm) UNLESS OTHERWISE NOTED AND CONSTRUCTED AS PER CITY OF OTTAWA STANDARDS (SC1.1).
- REFER TO LANDSCAPE PLAN FOR PLANTING AND OTHER LANDSCAPE FEATURE DETAILS.
- CONTRACTOR TO PROVIDE THE CONSULTANT WITH A GRADING PLAN INDICATING AS-BUILT ELEVATIONS OF ALL DESIGN GRADES SHOWN ON THIS PLAN.

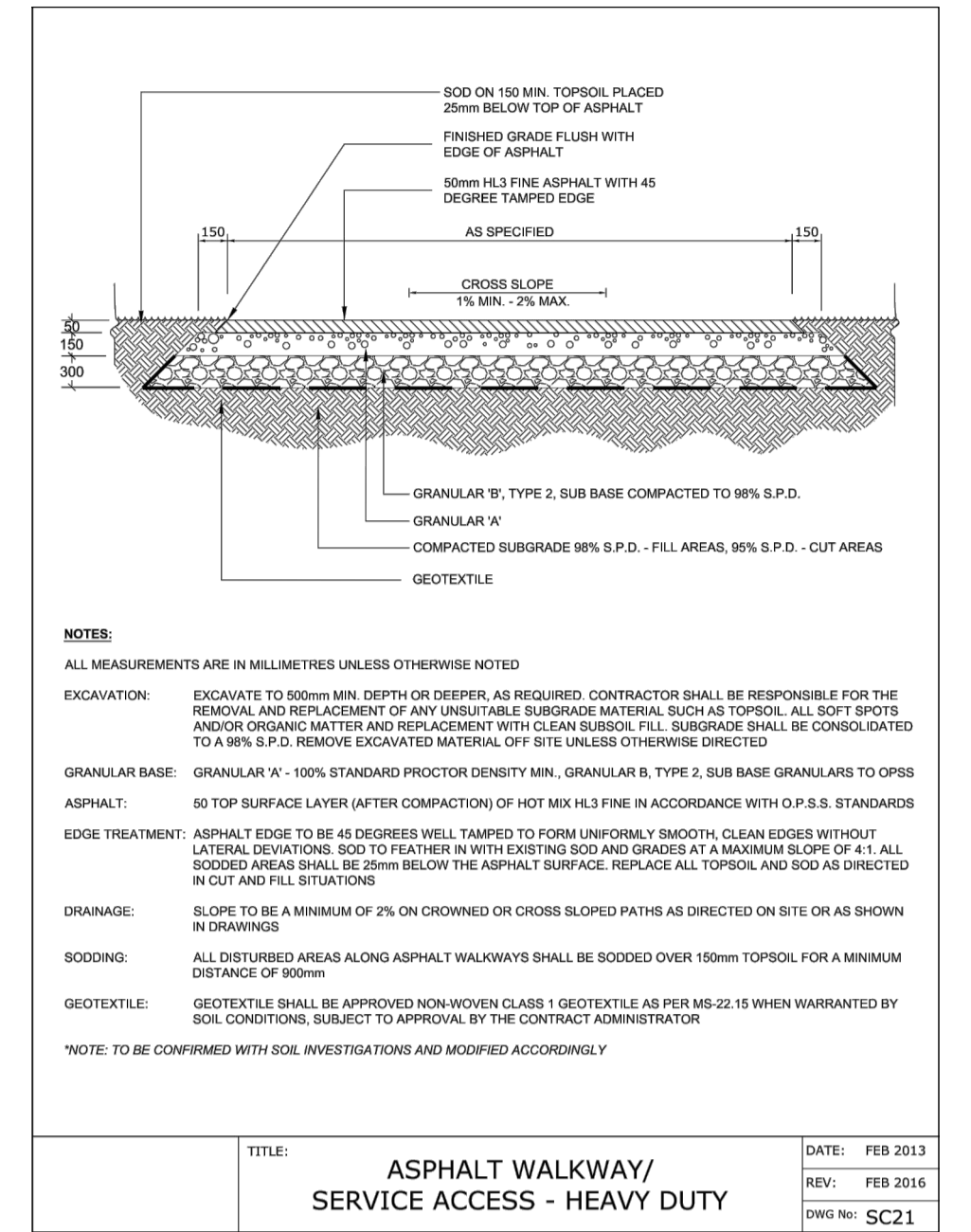
WATERMAIN NOTES:

- SPECIFICATIONS:

ITEM	SPEC. No.	REFERENCE
WATERMAIN TRENCHING	W17	CITY OF OTTAWA
THERMAL INSULATION IN SHALLOW TRENCHES	W22	CITY OF OTTAWA
WATERMAIN CROSSING BELOW SEWER	W25	CITY OF OTTAWA
WATERMAIN	PVC DR 18	
- SUPPLY AND CONSTRUCT ALL WATERMANS AND APPURTENANCES IN ACCORDANCE WITH THE CITY OF OTTAWA STANDARDS AND SPECIFICATIONS. EXCAVATION, INSTALLATION, BACKFILL AND RESTORATION OF ALL WATERMANS BY THE CONTRACTOR. CONNECTIONS AND SHUT-OFFS AT THE MAIN AND CHLORINATION OF THE WATER SYSTEM SHALL BE PERFORMED BY CITY OFFICIALS.
- WATERMAIN SHALL BE MINIMUM 2.4m DEPTH BELOW GRADE UNLESS OTHERWISE INDICATED.
- PROVIDE MINIMUM 0.25m CLEARANCE BETWEEN OUTSIDE OF PIPES AT ALL CROSSINGS.
- WATER SERVICE IS TO BE CONSTRUCTED TO WITHIN 1.0m OF FOUNDATION WALL AND CAPPED, UNLESS OTHERWISE INDICATED.

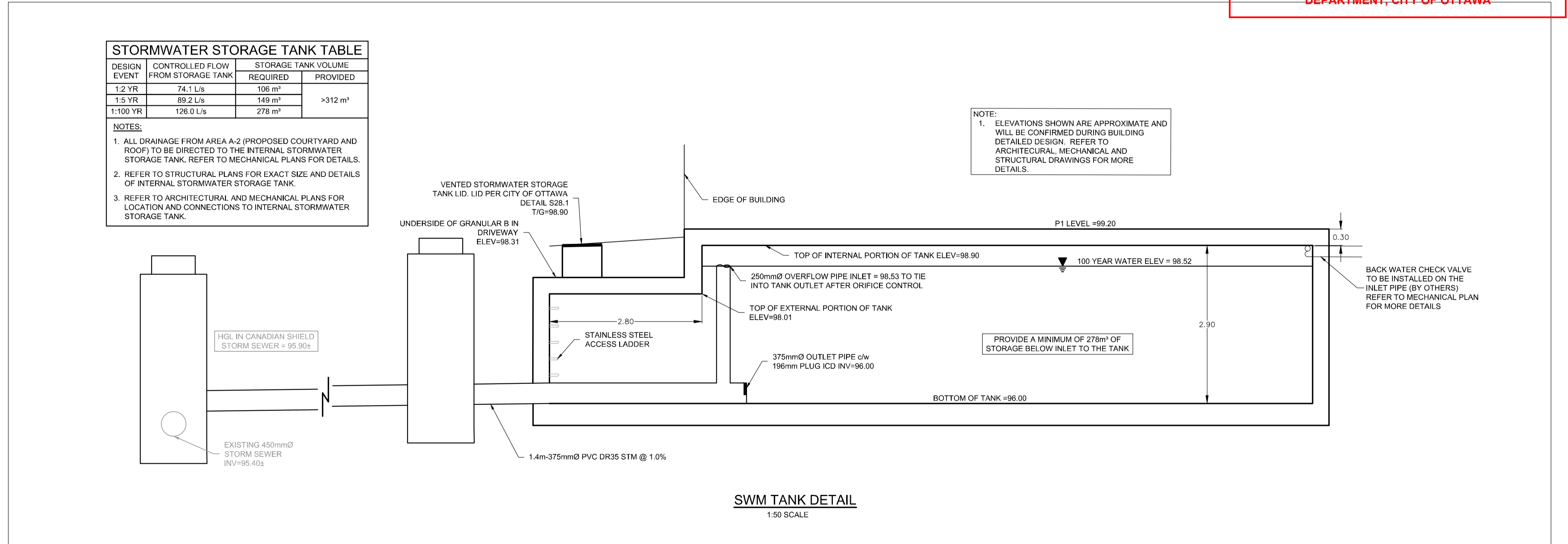
SWM TANK NOTES:

- THE MINIMUM INTERNAL SIZE OF THE STORMWATER MANAGEMENT TANK IS TO BE 312m³. REFER TO THE CROSS SECTION DETAIL AND THE ARCHITECT'S DRAWINGS FOR TANK DIMENSIONS, CONFIGURATION, MATERIALS AND WATERPROOFING DETAILS.
- THE ACCESS HATCHES ARE TO OPERATE AS THE EMERGENCY OVERFLOW FOR THE SWM TANK. PROVIDE THE FRAME AND COVERS PER S25 & S28.1 RESPECTIVELY.
- PROVIDE CIRCULAR HOLLOW ALUMINIUM MAINTENANCE HOLE STEPS ALONG TANK WALLS AT THE ACCESS HATCHES PER OPSD 405.010.



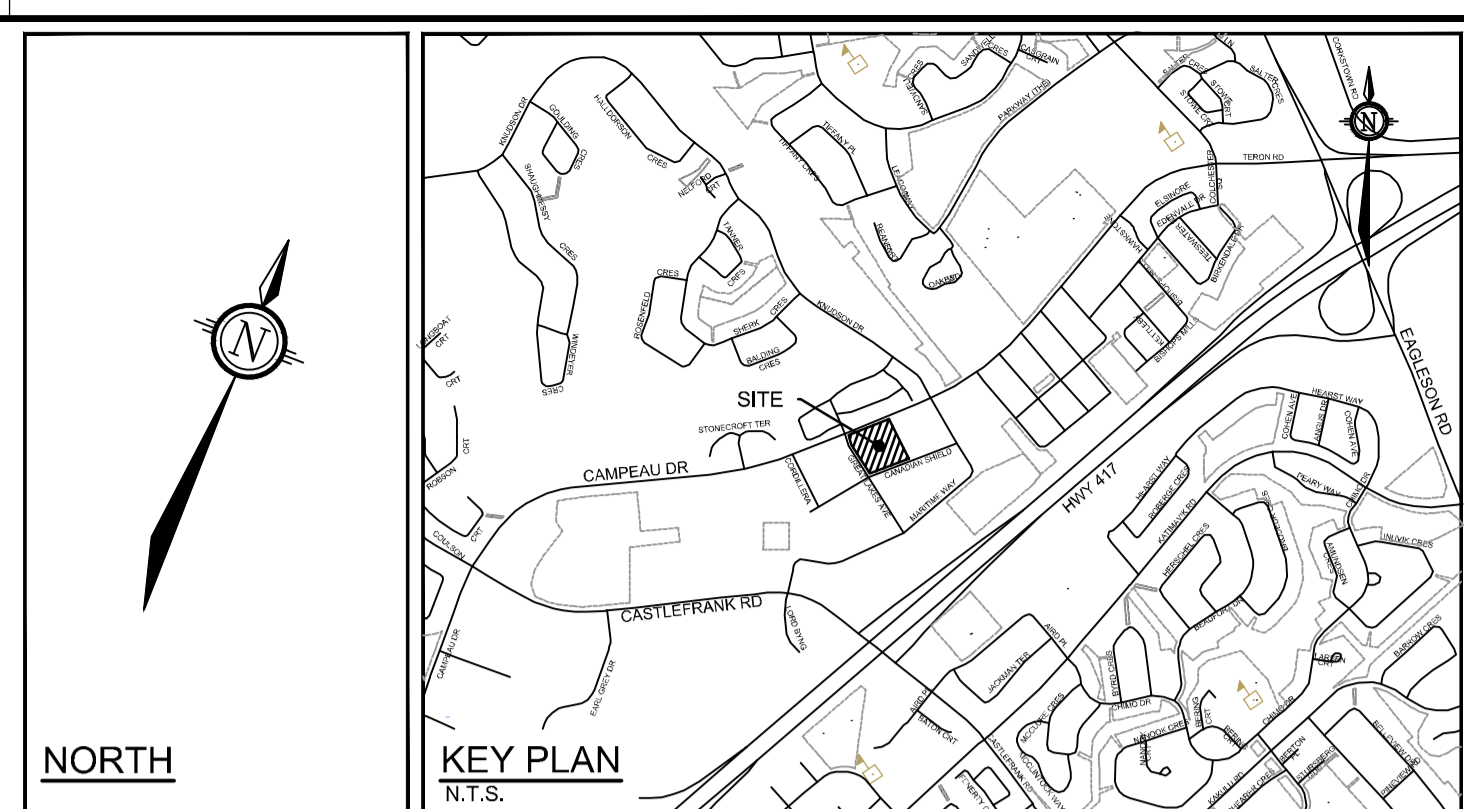
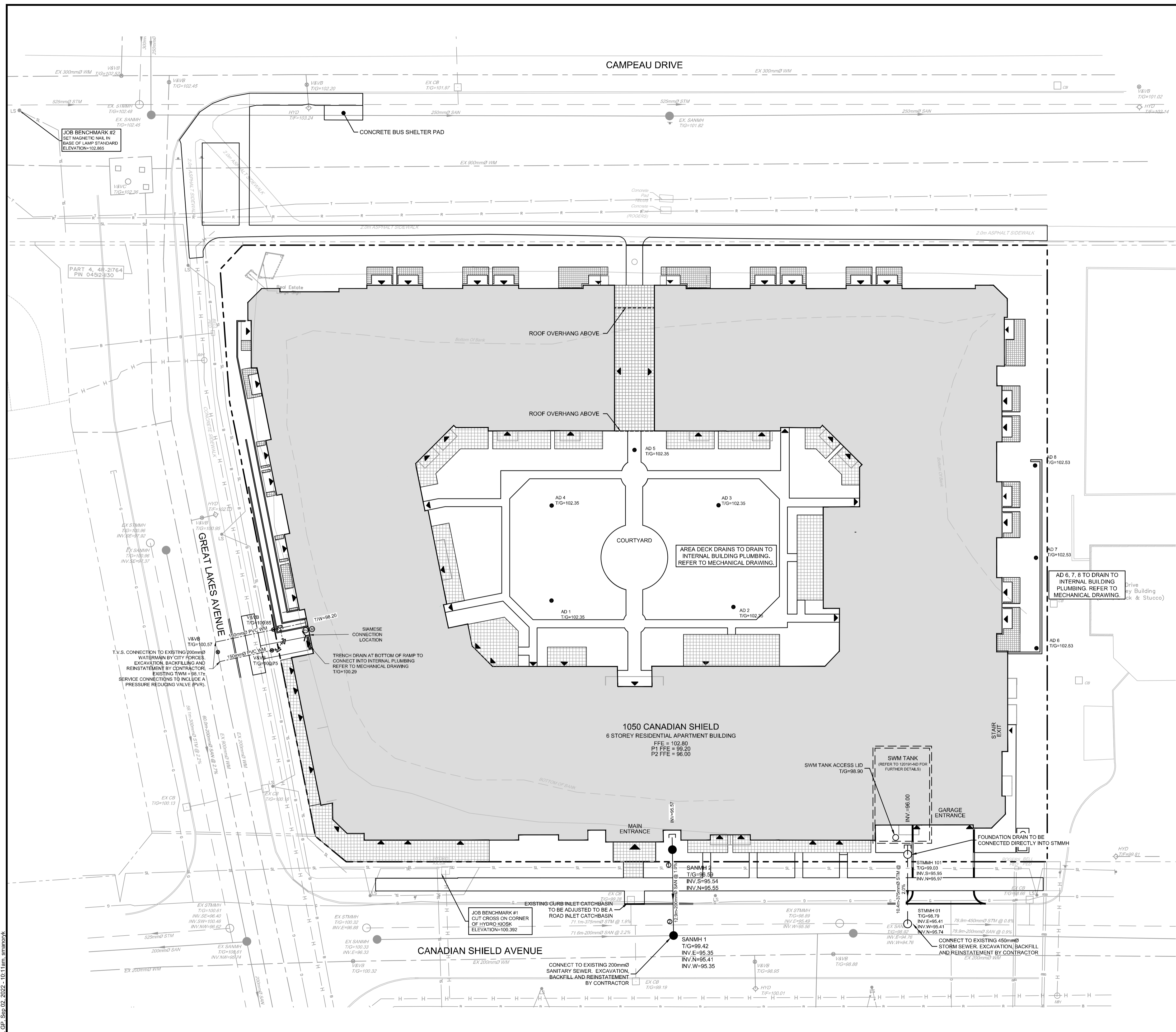
APPROVED
By Allison Hamlin at 5:27 pm, Nov 14, 2022

Allison Hamlin
ALLISON HAMLIN
MANAGER (A), DEVELOPMENT REVIEW WEST
PLANNING, REAL ESTATE & ECONOMIC DEVELOPMENT
DEPARTMENT, CITY OF OTTAWA



NOTE:
THE POSITION OF ALL POLE LINES, CONDUITS, WATERMANS, SEWERS AND OTHER UNDERGROUND AND OVERGROUND UTILITIES AND STRUCTURES IS NOT NECESSARILY SHOWN ON THE CONTRACT DRAWINGS, AND WHERE SHOWN, THE ACCURACY OF THE POSITION OF SUCH UTILITIES AND STRUCTURES IS NOT GUARANTEED. BEFORE STARTING WORK, DETERMINE THE EXACT LOCATION OF ALL SUCH UTILITIES AND STRUCTURES AND ASSUME ALL LIABILITY FOR DAMAGE TO THEM.

M:\2020\120191\120191-ND.dwg, ND_Sep.12.2022 - 10:08am, amamrnyk



LEGEND

---	PROPERTY LINE	▽	PROPOSED TERRACE ENTRANCE
—DC—	PROPOSED CURB	○	EXISTING UTILITY POLE CW GUY WIRES
---	PROPOSED DEPRESSED CURB	○	EXISTING WATERMAIN CW VALVE & VALVE CHAMBER
---	PROPOSED WATER SERVICE	○	EXISTING HYDRANT CW VALVE & LEAD
SP	PROPOSED STANDPOST	○	EXISTING SANITARY MANHOLE & SEWER
V&VB	PROPOSED VALVE AND VALVE BOX	○	EXISTING STORM MANHOLE & SEWER
⊔	PROPOSED CAP	CB 1	EXISTING CATCHBASIN
⊙	PROPOSED WATER METER	—	EXISTING GAS MAIN
⊙	PROPOSED REMOTE METER	—	EXISTING UNDERGROUND BELL LINE
●	PROPOSED SANITARY SERVICE CW MANHOLE	—	EXISTING UNDERGROUND TELUS LINE
○	PROPOSED STORM SEWER CW MANHOLE	—	EXISTING UNDERGROUND ROGERS LINE
▽	PROPOSED BUILDING ENTRANCE	—	EXISTING UNDERGROUND STREETLIGHT LINE
→	DIRECTION OF FLOW	—	EXISTING UNDERGROUND HYDRO LINE
AD	PROPOSED AREA DECK DRAIN BY OTHERS (REFER TO MECH DRAWINGS FOR MORE INFO)	⊙	EXISTING STREETLIGHT
RD	PROPOSED ROOF DRAIN BY OTHERS (REFER TO MECH DRAWINGS FOR MORE INFO)		
GM	PROPOSED GAS METER		

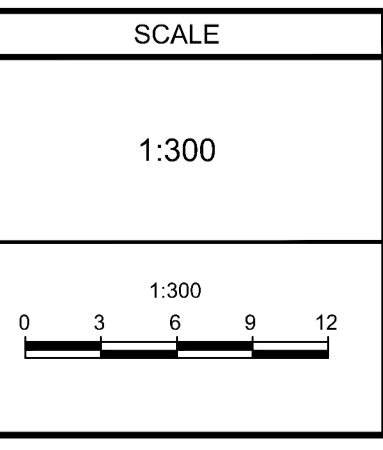
APPROVED
By Allison Hamlin at 5:27 pm, Nov 14, 2022

Allison Hamlin
ALLISON HAMLIN
MANAGER (A), DEVELOPMENT REVIEW WEST
PLANNING, REAL ESTATE & ECONOMIC DEVELOPMENT
DEPARTMENT, CITY OF OTTAWA

REFER TO 120191-ND FOR ADDITIONAL NOTES

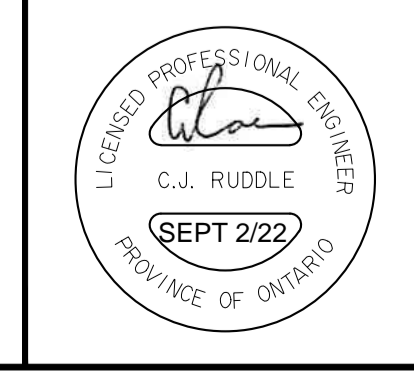
NOTE:
THE POSITION OF ALL POLE LINES, CONDUITS, WATERMANS, SEWERS AND OTHER UNDERGROUND AND OVERGROUND UTILITIES AND STRUCTURES IS NOT NECESSARILY SHOWN ON THE CONTRACT DRAWINGS, AND WHERE SHOWN, THE ACCURACY OF THE POSITION OF SUCH UTILITIES AND STRUCTURES IS NOT GUARANTEED. BEFORE STARTING WORK, DETERMINE THE EXACT LOCATION OF ALL SUCH UTILITIES AND STRUCTURES AND ASSUME ALL LIABILITY FOR DAMAGE TO THEM.

No.	REVISION	DATE	BY
8.	ISSUED FOR FINAL APPROVAL	SEPT 2/22	CJR
7.	REVISED PER CITY COMMENTS	JUL 21/22	CJR
6.	REVISED PER CITY COMMENTS	APR 28/22	CJR
5.	REVISED PER CITY COMMENTS	JAN 14/22	CJR
4.	REVISED PER CITY COMMENTS	DEC 17/21	CJR
3.	ISSUED FOR SITE PLAN APPROVAL	JUL 7/21	CJR
2.	ISSUED FOR COORDINATION	MAY 14/21	CJR
1.	ISSUED FOR COORDINATION	MAR 30/21	CJR



DESIGN	MJH
CHECKED	MJH
DRAWN	CJR
CHECKED	MJH
APPROVED	CJR
	JLS

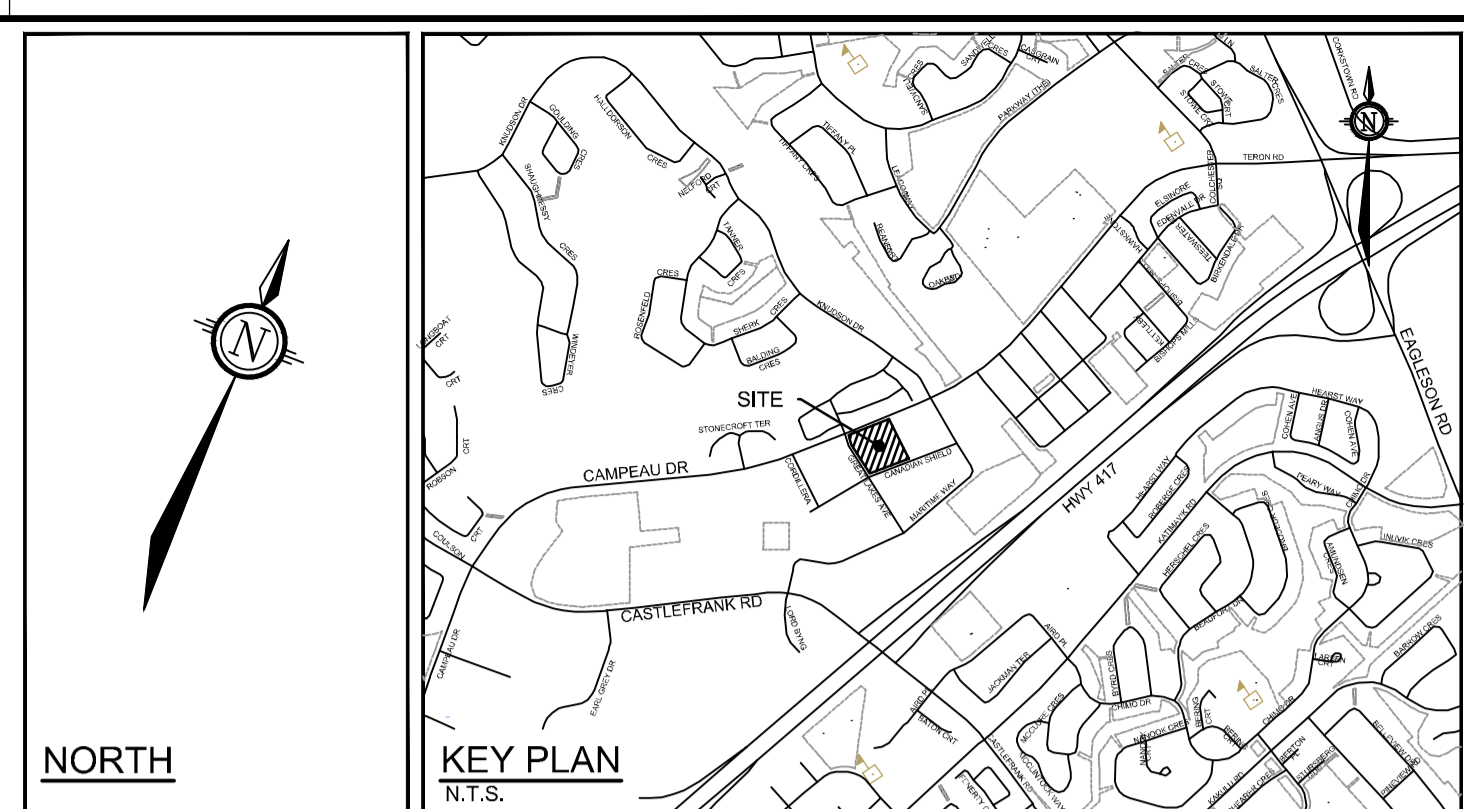
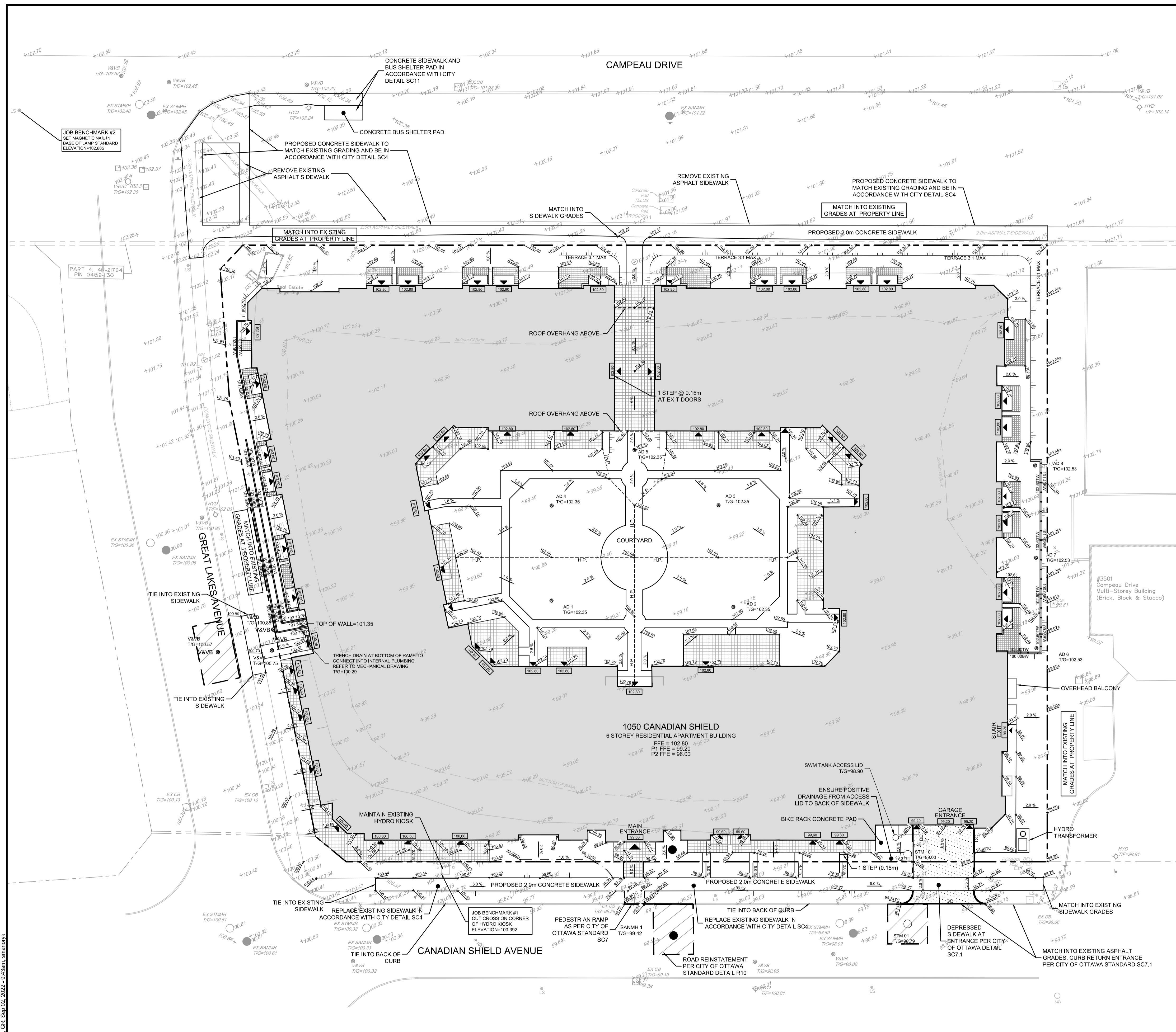
FOR FINAL APPROVAL



NOVATECH
Engineers, Planners & Landscape Architects
Suite 200, 240 Michael Cowpland Drive
Ottawa, Ontario, Canada K2M 1P6
Telephone: (613) 254-9643
Facsimile: (613) 254-5867
Website: www.novatech-eng.com

LOCATION CITY OF OTTAWA CARRÉ-SAINT-LOUIS	
DRAWING NAME GENERAL SERVICING PLAN	
PROJECT No.	120191
REV	REV # 8
DRAWING No.	120191-GP

M:\2020\120191\120191-ND\GP.dwg, GP, Sep 12, 2022 - 10:11 am, samandk



LEGEND

---	PROPERTY LINE	---	H.P.	PROPOSED HIGH POINT
x 98.40	PROPOSED ELEVATION	---	DC	PROPOSED CURB
x 98.40	EXISTING ELEVATION	---	---	PROPOSED DEPRESSED CURB
x	PROPOSED TOP OF WALL ELEVATION		---	TERRACING 3:1 SLOPE MAX (UNLESS OTHERWISE INDICATED)
x	PROPOSED BOTTOM OF WALL ELEVATION	---	---	PROPOSED RETAINING WALL
x	PROPOSED TOP OF CURB ELEVATION	---	---	PROPOSED DOOR SILL ELEVATION
x	PROPOSED DOOR SILL ELEVATION	---	---	SAWCUT
2.0%	SLOPE AND DIRECTION	---	---	ROAD REINSTATEMENT
V&VB	PROPOSED VALVE AND VALVE BOX	---	---	EXISTING VALVE & VALVE CHAMBER
---	PROPOSED BUILDING ENTRANCE	---	---	EXISTING VALVE & VALVE BOX
---	DIRECTION OF MAJOR OVERLAND FLOW	---	---	EXISTING HYDRANT
---	PROPOSED AREA DECK DRAIN BY OTHERS (REFER TO MECH DRAWINGS FOR MORE INFO)	---	---	EXISTING SANITARY MANHOLE
---	PROPOSED FILTER BAGS AT CATCHBASINS, CATCHBASIN MANHOLES AND TRENCHDRAINS	---	---	EXISTING STORM MANHOLE
M	PROPOSED MUD MAT	---	---	EXISTING CATCHBASIN
---	LIGHT DUTY SILT FENCE (OPSD 219.110)	---	---	EXISTING LIGHT STANDARD

APPROVED
By Allison Hamlin at 5:27 pm, Nov 14, 2022

Allison Hamlin
ALLISON HAMLIN
MANAGER (A), DEVELOPMENT REVIEW WEST
PLANNING, REAL ESTATE & ECONOMIC DEVELOPMENT
DEPARTMENT, CITY OF OTTAWA

PAVEMENT STRUCTURE:
HEAVY DUTY PAVEMENT
40mm HL3 OR SP 12.5
50mm HL8 PR SP 19.0
150mm OPSS GRANULAR "A"
450mm OPSS GRANULAR "B" TYPE II

REFER TO 120191-ND FOR ADDITIONAL NOTES

NOTE:
THE POSITION OF ALL POLE LINES, CONDUITS, WATERMANS, SEWERS AND OTHER UNDERGROUND AND OVERGROUND UTILITIES AND STRUCTURES IS NOT NECESSARILY SHOWN ON THE CONTRACT DRAWINGS, AND WHERE SHOWN, THE ACCURACY OF THE POSITION OF SUCH UTILITIES AND STRUCTURES IS NOT GUARANTEED. BEFORE STARTING WORK, DETERMINE THE EXACT LOCATION OF ALL SUCH UTILITIES AND STRUCTURES AND ASSUME ALL LIABILITY FOR DAMAGE TO THEM.

No.	REVISION	DATE	BY	No.	REVISION	DATE	BY
8.	REVISED PER CITY COMMENTS	APR 28/22	CJR	1.	ISSUED FOR COORDINATION	MAR 30/21	CJR
7.	REVISED PER CITY COMMENTS	JAN 14/22	CJR	2.	ISSUED FOR COORDINATION	APR 23/21	CJR
6.	REVISED PER CITY COMMENTS	DEC 17/21	CJR	3.	ISSUED FOR COORDINATION	MAY 04/21	CJR
5.	ISSUED FOR SITE PLAN APPROVAL	JUL 7/21	CJR	4.	ISSUED FOR COORDINATION	JUN 10/21	CJR
4.	ISSUED FOR COORDINATION	JUN 10/21	CJR	5.	ISSUED FOR COORDINATION	JUL 7/21	CJR
3.	ISSUED FOR COORDINATION	MAY 04/21	CJR	6.	REVISED PER CITY COMMENTS	DEC 17/21	CJR
2.	ISSUED FOR COORDINATION	APR 23/21	CJR	7.	REVISED PER CITY COMMENTS	JAN 14/22	CJR
1.	ISSUED FOR COORDINATION	MAR 30/21	CJR	8.	REVISED PER CITY COMMENTS	APR 28/22	CJR
10.	ISSUED FOR FINAL REVIEW	SEPT 2/22	CJR				

FOR FINAL REVIEW

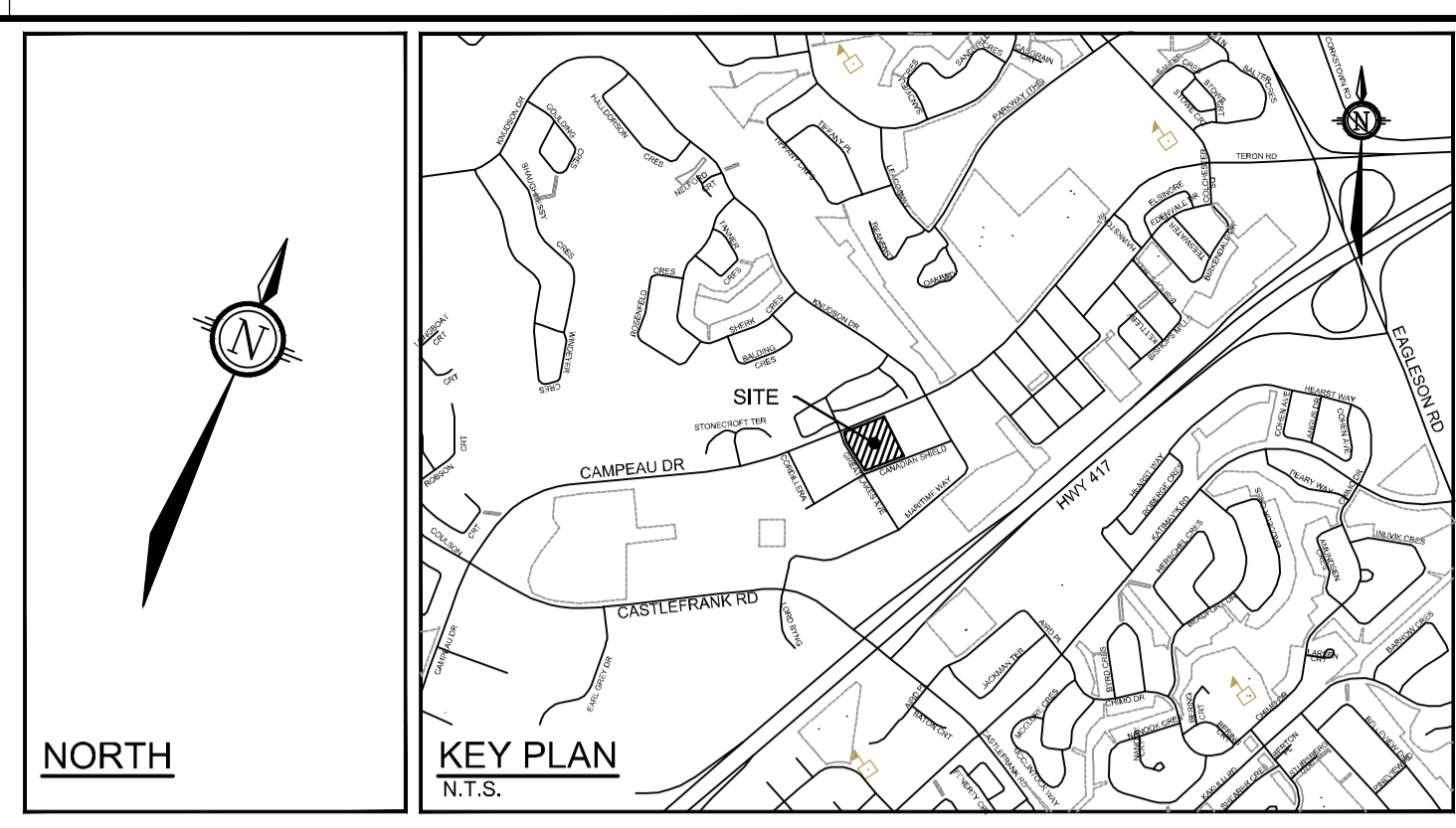
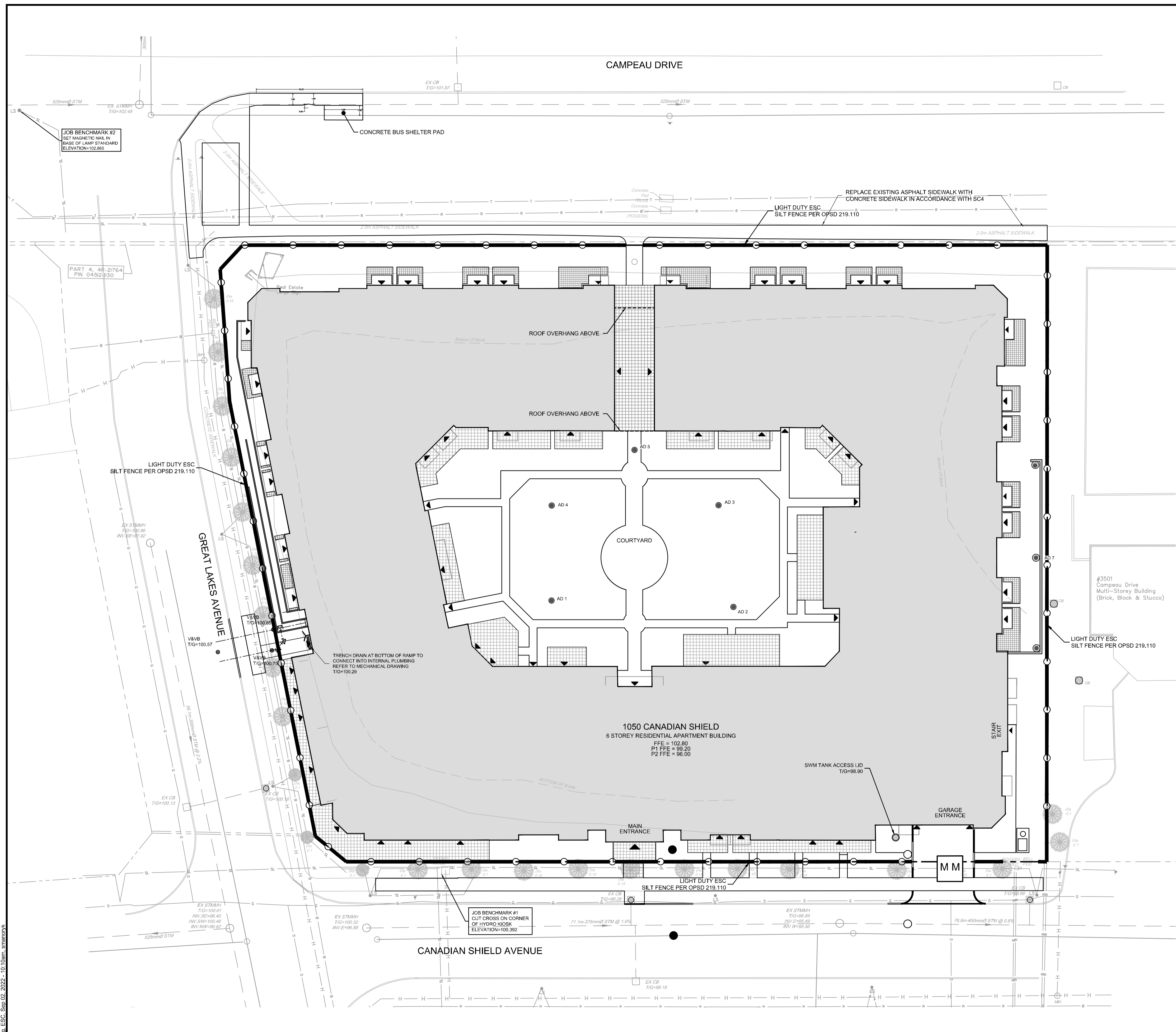
SCALE: 1:300

DESIGN: MJH
CHECKED: CJR
DRAWN: MJH
CHECKED: CJR
APPROVED: JLS

PROFESSIONAL ENGINEER
C.J. RUDDLE
SEPT 2/22
PROVINCE OF ONTARIO

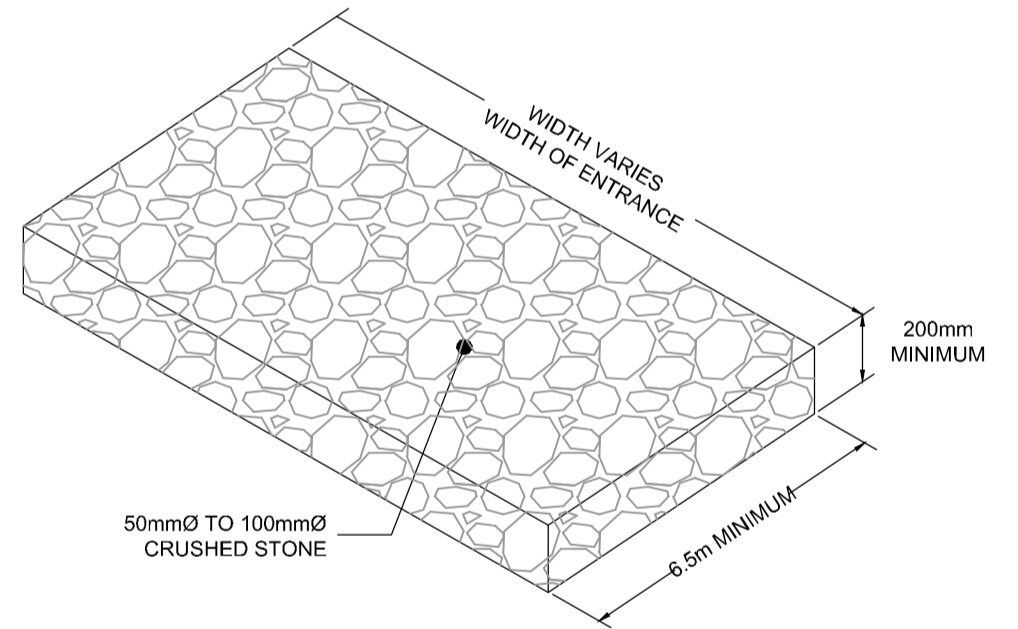
NOVATECH
Engineers, Planners & Landscape Architects
Suite 200, 240 Michael Cowpland Drive
Ottawa, Ontario, Canada K2M 1P6
Telephone: (613) 254-9643
Facsimile: (613) 254-5867
Website: www.novatech-eng.com

LOCATION: CITY OF OTTAWA, CARRÉ-SAINT-LOUIS
DRAWING NAME: GRADING PLAN
PROJECT No.: 120191
REV # 10
DRAWING No.: 120191-GR
#18567



LEGEND

- PROPERTY LINE
- PROPOSED CURB
- DC --- PROPOSED DEPRESSED CURB
- STMH PROPOSED STORM MANHOLE
- ▽ PROPOSED BUILDING ENTRANCE
- ⊕ AD PROPOSED AREA DECK DRAIN BY OTHERS (REFER TO MECH DRAWINGS FOR MORE INFO)
- ⊙ PROPOSED ROOF DRAIN BY OTHERS (REFER TO MECH DRAWINGS FOR MORE INFO)
- PROPOSED FILTER BAGS AT CATCHBASINS, CATCHBASIN MANHOLES AND TRENCHDRAINS
- M M PROPOSED MUD MAT
- LIGHT DUTY SILT FENCE (OPSD 219.110)
- STM MH ○ EXISTING STORM MANHOLE
- CB □ EXISTING CATCHBASIN



MUD MAT DETAIL
NOT TO SCALE

APPROVED
By Allison Hamlin at 5:27 pm, Nov 14, 2022

Allison Hamlin

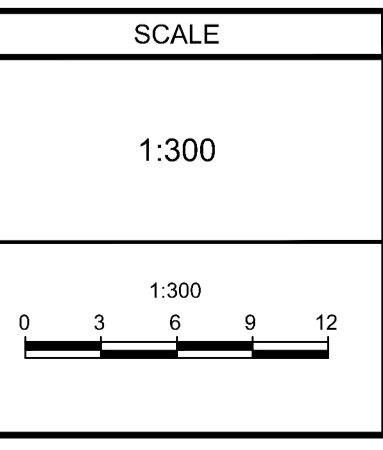
ALLISON HAMLIN
MANAGER (A), DEVELOPMENT REVIEW WEST
PLANNING, REAL ESTATE & ECONOMIC DEVELOPMENT
DEPARTMENT, CITY OF OTTAWA

REFER TO 120191-ND FOR ADDITIONAL NOTES

NOTE:
THE POSITION OF ALL POLE LINES, CONDUITS, WATERMANS, SEWERS AND OTHER UNDERGROUND AND OVERGROUND UTILITIES AND STRUCTURES IS NOT NECESSARILY SHOWN ON THE CONTRACT DRAWINGS, AND WHERE SHOWN, THE ACCURACY OF THE POSITION OF SUCH UTILITIES AND STRUCTURES IS NOT GUARANTEED. BEFORE STARTING WORK, DETERMINE THE EXACT LOCATION OF ALL SUCH UTILITIES AND STRUCTURES AND ASSUME ALL LIABILITY FOR DAMAGE TO THEM.

No.	REVISION	DATE	BY
4.	ISSUED FOR FINAL APPROVAL	SEPT 2/22	CJR
3.	REVISED PER CITY COMMENTS	JUL 21/22	CJR
2.	REVISED PER CITY COMMENTS	JAN 14/22	CJR
1.	REVISED PER CITY COMMENTS	DEC 17/21	CJR

DESIGN	MJH
CHECKED	CJR
DRAWN	MJH
CHECKED	CJR
APPROVED	JLS



FOR FINAL APPROVAL

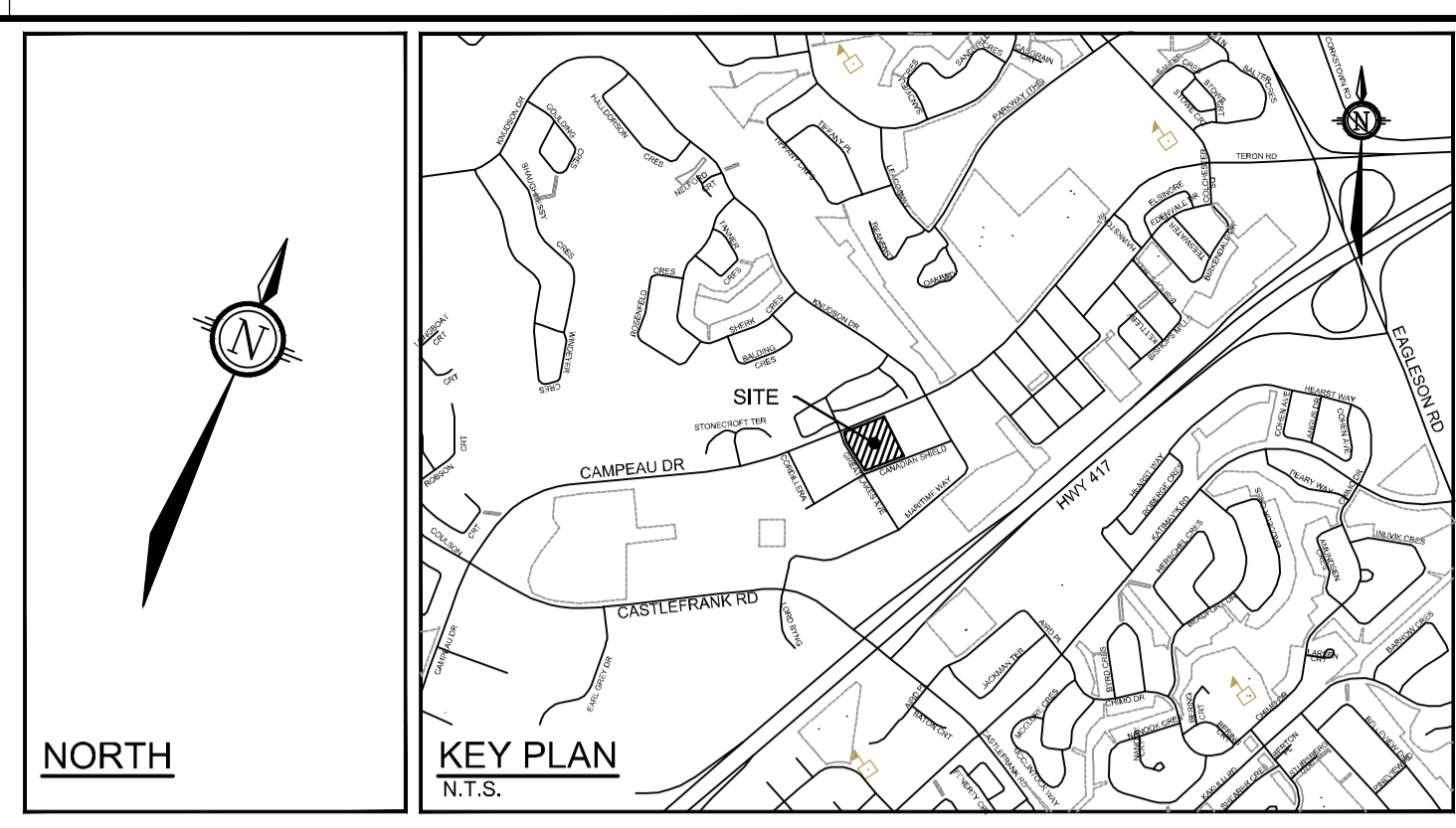
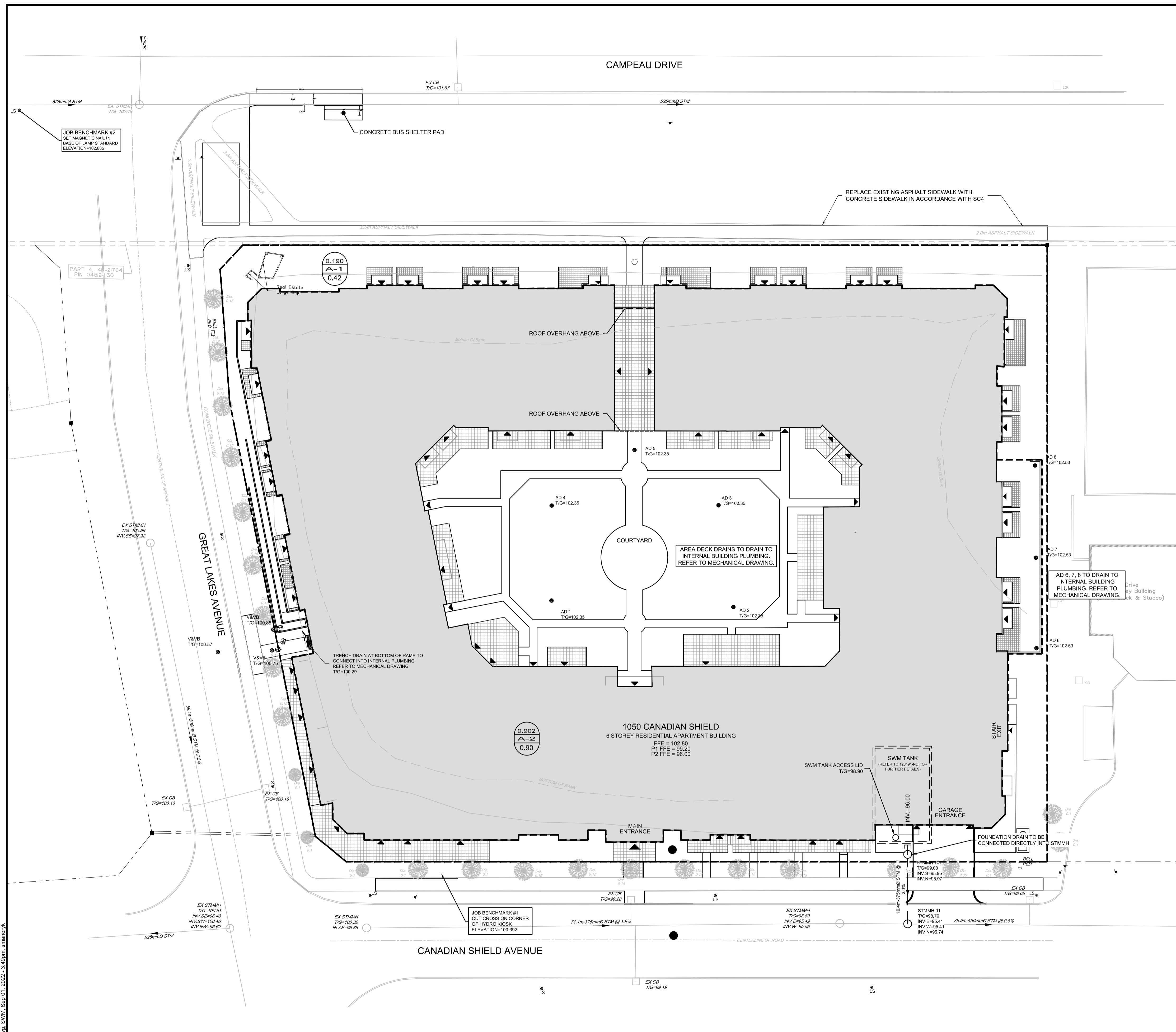
LICENSED PROFESSIONAL ENGINEER
C.J. RUDDLE
SEPT 2/22
PROVINCE OF ONTARIO

NOVATECH
Engineers, Planners & Landscape Architects
Suite 200, 240 Michael Cowpland Drive
Ottawa, Ontario, Canada K2M 1P6
Telephone (613) 254-9643
Facsimile (613) 254-5867
Website www.novatech-eng.com

LOCATION
CITY OF OTTAWA
CARRÉ-SAINT-LOUIS

DRAWING NAME
EROSION AND SEDIMENT CONTROL PLAN

PROJECT No. 120191
REV # 4
DRAWING No. 120191-ESC
18557



INLET CONTROL DEVICE FOR STORAGE TANK

DESIGN EVENT	ICD TYPE AND SIZE	DIAMETER OF OUTLET PIPE (mm)	DESIGN FLOW (L/s)	DESIGN HEAD (m)	STORAGE REQUIRED (m³)
1:2 YEAR	196mm	375	74.1	0.92	106
1:5 YEAR			89.2	1.30	149
1:100 YEAR			126.0	2.52	278

APPROVED
By Allison Hamlin at 5:27 pm, Nov 14, 2022

Allison Hamlin
ALLISON HAMLIN
MANAGER (A), DEVELOPMENT REVIEW WEST
PLANNING, REAL ESTATE & ECONOMIC DEVELOPMENT
DEPARTMENT, CITY OF OTTAWA

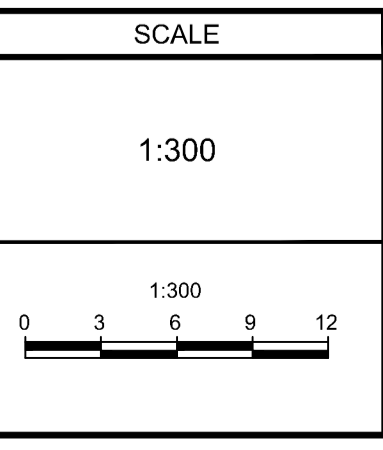
LEGEND

- PROPERTY LINE
- PROPOSED STORM SEWER AND MANHOLE
- AD --- DIRECTION OF FLOW
- AD --- PROPOSED AREA DECK DRAIN BY OTHERS (REFER TO MECH DRAWINGS FOR MORE INFO)
- * --- PROPOSED ROOF DRAIN BY OTHERS (REFER TO MECH DRAWINGS FOR MORE INFO)
- STM MH --- EXISTING STORM MANHOLE & SEWER
- CB 1 --- EXISTING CATCHBASIN
- STORM SEWER DRAINAGE AREA BOUNDARY
- --- DRAINAGE AREA (ha)
- A-16 --- DRAINAGE AREA ID
- --- RUNOFF COEFFICIENT

REFER TO 120191-ND FOR ADDITIONAL NOTES

NOTE:
THE POSITION OF ALL POLE LINES, CONDUITS, WATERMANS, SEWERS AND OTHER UNDERGROUND AND OVERGROUND UTILITIES AND STRUCTURES IS NOT NECESSARILY SHOWN ON THE CONTRACT DRAWINGS, AND WHERE SHOWN, THE ACCURACY OF THE POSITION OF SUCH UTILITIES AND STRUCTURES IS NOT GUARANTEED. BEFORE STARTING WORK, DETERMINE THE EXACT LOCATION OF ALL SUCH UTILITIES AND STRUCTURES AND ASSUME ALL LIABILITY FOR DAMAGE TO THEM.

No.	REVISION	DATE	BY
5.	ISSUED FOR FINAL APPROVAL	AUG 2/22	CJR
4.	REVISED PER CITY COMMENTS	JUL 21/22	CJR
3.	REVISED PER CITY COMMENTS	DEC 17/21	CJR
2.	ISSUED FOR SITE PLAN APPROVAL	JUL 7/21	CJR
1.	ISSUED FOR COORDINATION	MAR 30/21	CJR



DESIGN	MJH
CHECKED	CJR
DRAWN	MJH
CHECKED	CJR
APPROVED	JLS

FOR FINAL APPROVAL

LICENCED PROFESSIONAL ENGINEER
C.J. RUDDLE
SEPT 2/22
PROVINCE OF ONTARIO

NOVATECH
Engineers, Planners & Landscape Architects
Suite 200, 240 Michael Cowpland Drive
Ottawa, Ontario, Canada K2M 1P6
Telephone (613) 254-9643
Facsimile (613) 254-5867
Website www.novatech-eng.com

LOCATION		PROJECT No.	
CITY OF OTTAWA CARRÉ-SAINT-LOUIS		120191	
DRAWING NAME		REV #	
STORMWATER MANAGEMENT PLAN		REV # 5	
DRAWING No.		120191-SWM	

M:\2020\120191\120191-SWM.dwg, SWM, Sept 01, 2022, 3:48pm, smarcoryk

007-16-15-0008 #18567