

MELROSE AVENUE

DRAWING NUMBER: 210157-SER

- CONSTRUCTION NOTES:**
1. All dimensions and elevations are in metres. Do not scale drawing.
 2. This drawing is not a legal survey, a utility plan or a site plan and is for water servicing only.
 3. TBM = Tip of arrowhead on existing fire hydrant, elevation = 70.12 metres.
 4. This drawing cannot be accepted as acknowledging all of the utilities, and it will be the responsibility of the user to contact the respective utility authorities for confirmation.
 5. This drawing is not for construction until approved by the relevant authorities.
 6. Top of Foundation (TOF) elevations and assumed Underside of Footing (USF) elevations are assumed.
 7. Existing location of watermain, sanitary sewer and storm sewer as shown on this plan are approximate. Contractor to verify in the field to confirm exact location prior to construction.
 8. If water service is less than 1.0 metres from sewer, manhole or catchbasin, contractor shall insulate between them with s/m rigid insulation.
 9. Bedding for sewers and watermain installation shall be granular type "B" compacted to 95% dry proctor density.
 10. All dimensions to be verified on site by contractor prior to construction.
 11. Client is responsible for acquiring all necessary permits.
 12. Elevations of existing storm and sanitary services were provided by the Information Centre at the City of Ottawa.
 13. Any changes made to this plan must be verified and approved by Kollaard Associates Inc.

LEGEND

- EXISTING CATCHBASIN
- EXISTING MANHOLE
- STORM CONNECTION
- SANITARY CONNECTION
- WATER CONNECTION
- STM — STORM SEWER
- SAN — SANITARY SEWER
- W — WATERMAIN
- HP HYDRO POLE
- FH FIRE HYDRANT
- TEMPORARY BENCHMARK
- PROPOSED WATER VALVE

REV.	NAME	DATE	DESCRIPTION
1	AVB	11/06/2021	MODIFIED SITE PLAN LAYOUT
0	AVB	25/03/2021	FOR CITY OF OTTAWA REVIEW

Kollaard Associates
Engineers

PO, BOX 189, 210 PRESCOTT ST (613) 860-0923
KEMPTVILLE ONTARIO info@kollaard.ca
K0G 1J0 FAX (613) 258-0475
http://www.kollaard.ca

CLIENT:
CONCORDE PROPERTIES

PROJECT:
PROPOSED SITE SERVICING PLAN

LOCATION:
87 MELROSE AVENUE
CITY OF OTTAWA, ONTARIO

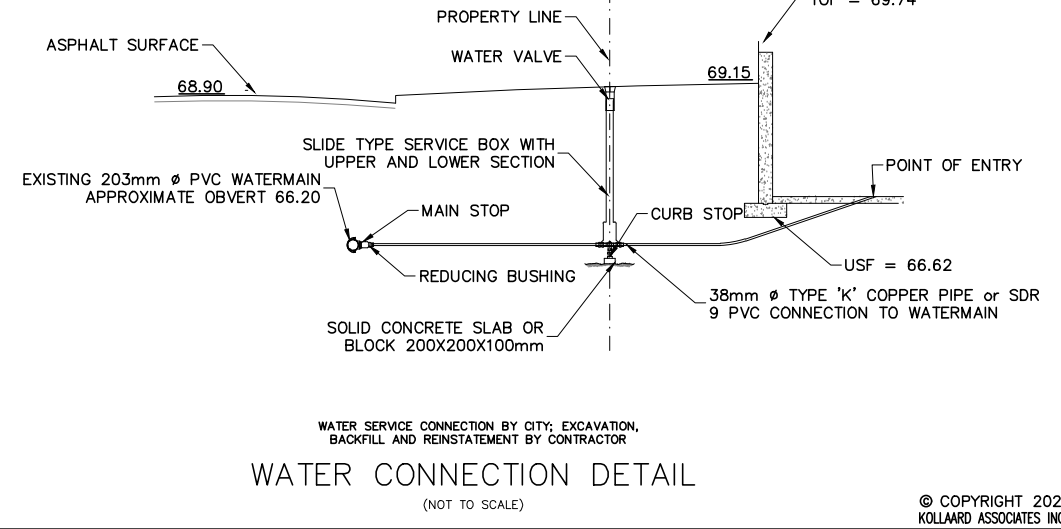
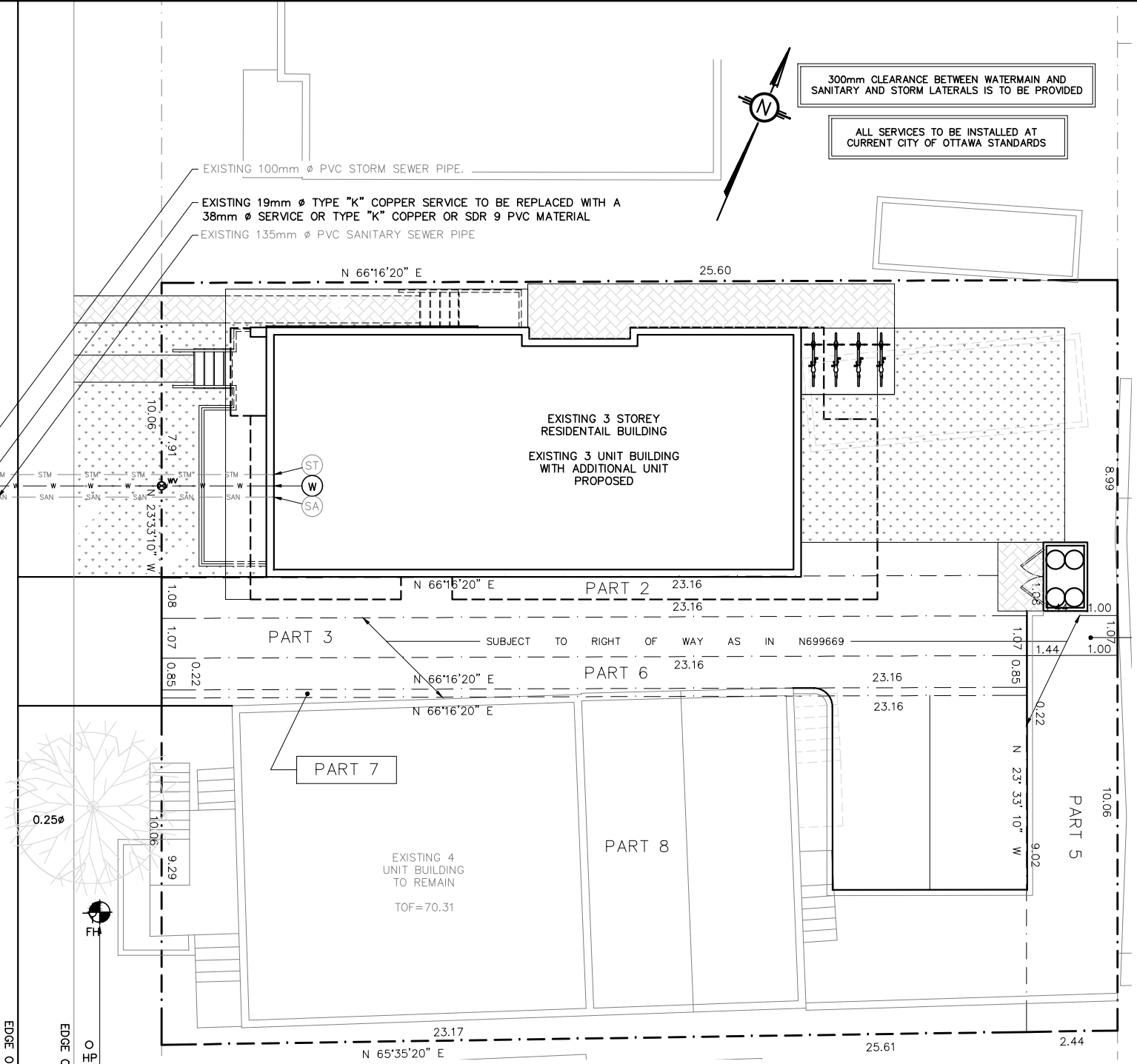
DESIGNED BY:
AVB

DATE:
MAR 25, 2021

DRAWN BY:
AVB

SCALE:
1:150

KOLLAARD FILE NUMBER:
210157



WATER CONNECTION DETAIL
(NOT TO SCALE)

LICENSED PROFESSIONAL ENGINEER
JUNE.11.2021
S. E. deWit
100079612
PROVINCE OF ONTARIO

TBM = TIP OF ARROWHEAD ON EXISTING FIRE HYDRANT, ELEVATION = 70.12 METRES

THIS DRAWING IS NOT FOR CONSTRUCTION UNTIL APPROVED BY THE RELEVANT AUTHORITIES

300mm CLEARANCE BETWEEN WATERMAIN AND SANITARY AND STORM LATERALS IS TO BE PROVIDED

ALL SERVICES TO BE INSTALLED AT CURRENT CITY OF OTTAWA STANDARDS

EDGE OF PAVEMENT

CENTERLINE OF ROAD

EDGE OF PAVEMENT

EDGE OF SIDEWALK

WATER SERVICE CONNECTION BY CITY; EXCAVATION, BACKFILL AND REINSTATEMENT BY CONTRACTOR