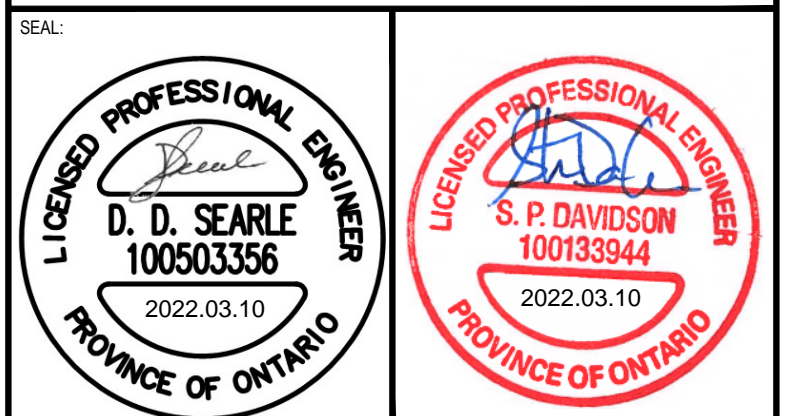
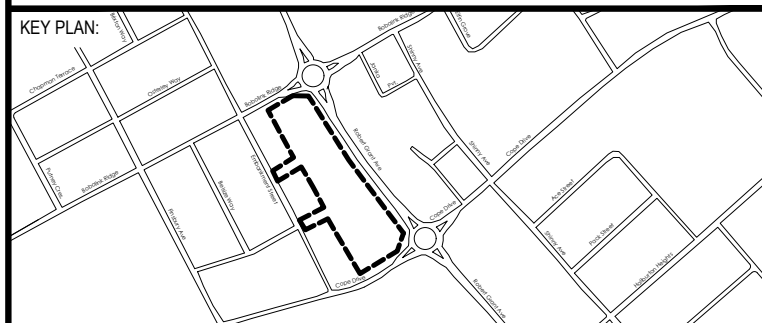


- NOTES:**
1. REFER TO DRAWING C0.1 FOR NOTES AND FULL LEGEND.
 2. ALL CURB RADII SHALL BE 1.0m UNLESS OTHERWISE NOTED.
 3. WATER AND SANITARY SERVICES ARE NOT SHOWN FOR CLARITY.
 4. REFER TO LANDSCAPE DRAWINGS FOR PLANTING DETAILS.



CLIENT REF. #
PROJECT:
TERRACE FLATS



DISCLAIMER: THIS DRAWING AND DESIGN IS COPYRIGHT PROTECTED WHICH SHALL NOT BE USED, REPRODUCED OR PRESENTED WITHOUT WRITTEN PERMISSION BY WSP. THE CONTRACTOR SHALL CHECK AND VERIFY ALL DIMENSIONS AND UTILITY LOCATIONS AND REPORT ALL ERRORS AND OMISSIONS PRIOR TO COMMENCING WORK. THIS DRAWING IS NOT TO BE SCALED.

ISSUED FOR - REVISION

NO.	DATE	DESCRIPTION
4	2022-03-10	RE-ISSUED FOR SPA
3	2022-01-31	RE-ISSUED FOR SPA
2	2021-10-15	RE-ISSUED FOR SPA
1	2021-07-07	ISSUED FOR SPA

PROJECT NO: 211-01221-00 DATE: MARCH 2021

ORIGINAL SCALE: 1:400 IF THIS BAR IS NOT 25mm LONG, ADJUST YOUR PLOTTING SCALE.

DESIGNED BY: DS

DRAWN BY: MH

CHECKED BY: SD

DISCIPLINE: CIVIL

TITLE: **TERRACE FLATS GENERAL ARRANGEMENT PLAN**

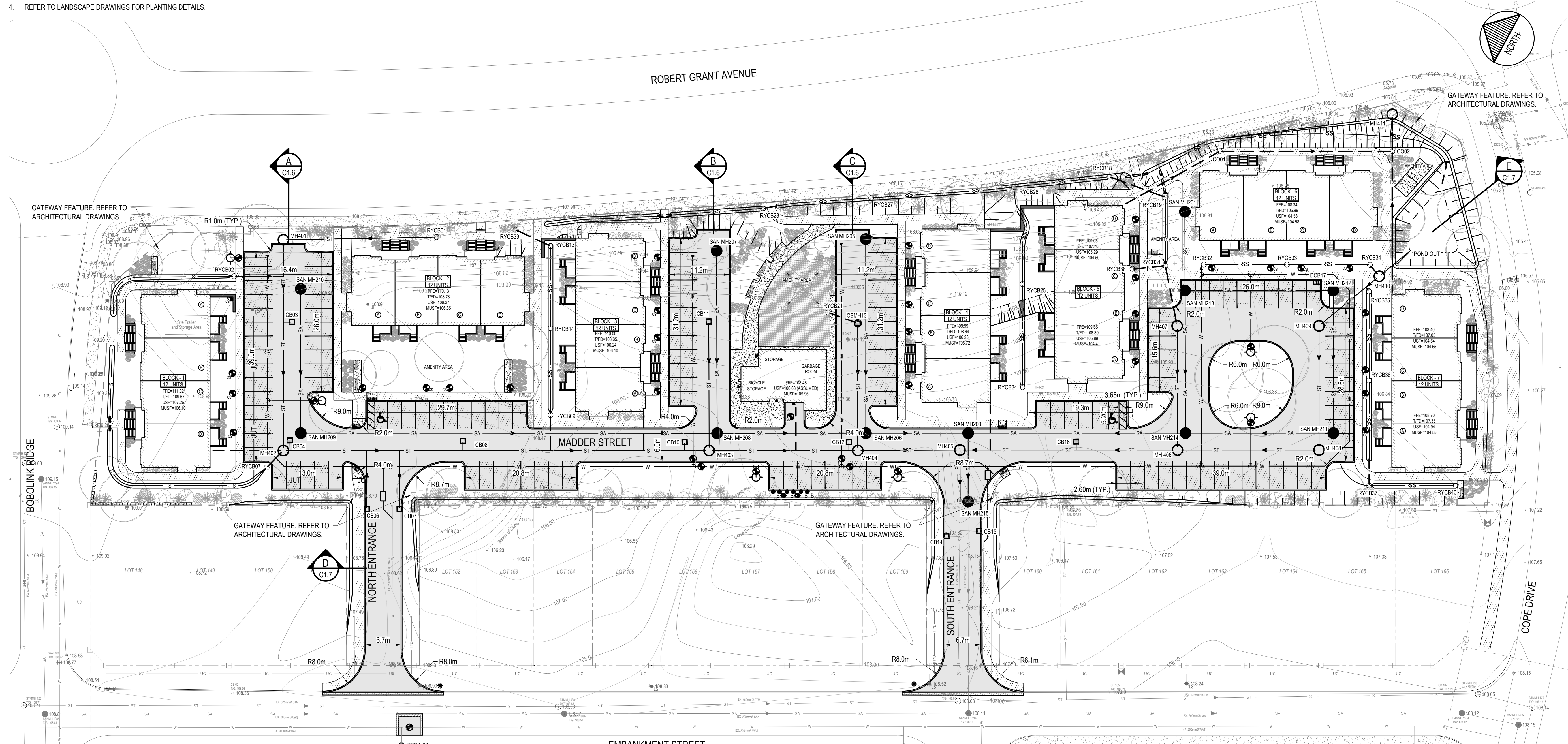
SHEET NUMBER: C1.1

SHEET # 2 OF 10

ISSUE: RE-ISSUED FOR SPA

DATE OF: MARCH 10, 2022

REV # 0



PROPOSED LEGEND:

— — — — — ALIGNMENT	● CATCH BASIN MANHOLE
— — — — — EDGE OF PAVEMENT	□ CATCH BASIN
— — — — — CONCRETE BARRIER CURB	● SANITARY MANHOLE
— W — WATERMAIN	○ FIRE HYDRANT
— V — WATER SERVICE	● WATERMAIN VALVE
— ST — STORM SEWER	■ TWSI
— — — — — STORM SUBDRAIN	▲ BUILDING ENTRANCE
— SA — SANITARY SEWER	— SIGN
— — — — — SANITARY SERVICE	— GRADE ELEVATION
— JUT — JOINT UTILITY TRENCH	— IBI DESIGN GRADE
— — — — — GRADING TOP OF SLOPE	— TOP OF BERM GRADE ELEVATION
— — — — — GRADING BOTTOM OF SLOPE	■ FULL DEPTH ASPHALT
— S — SWALE	■ PARTIAL DEPTH ASPHALT
— SS — SWALE c/w SUBDRAIN	■ CONCRETE SIDEWALK
— — — — — 100mm LINE PAINTING	■ ASPHALT SIDEWALK
— — — — — 1.8m HIGH PVC FENCE	■ BUILDING
— — — — — TERRACING	■ RIVER STONE
○ STORM MANHOLE	
○ REAR YARD CATCH BASIN	

APPROVED
By Allison Hamlin at 5:29 pm, Jun 28, 2022

Allison Hamlin

ALLISON HAMLIN
MANAGER (A), DEVELOPMENT REVIEW WEST
PLANNING, REAL ESTATE & ECONOMIC DEVELOPMENT
DEPARTMENT, CITY OF OTTAWA

M:\2021\211-01221-00 - Richcraft Terrace Flats Site Plan\Drawings\01_Civil\01_Proposed\211-01221-00_GA.dwg, No. 09, 2022, 5:11pm BY:hamlin CITY PLAN NO. 14498