



1224 GARDINERS ROAD, SUITE 201  
KINGSTON, ONTARIO  
CANADA K7P 0G2  
PHONE: 613-634-7373  
WWW.WSP.COM

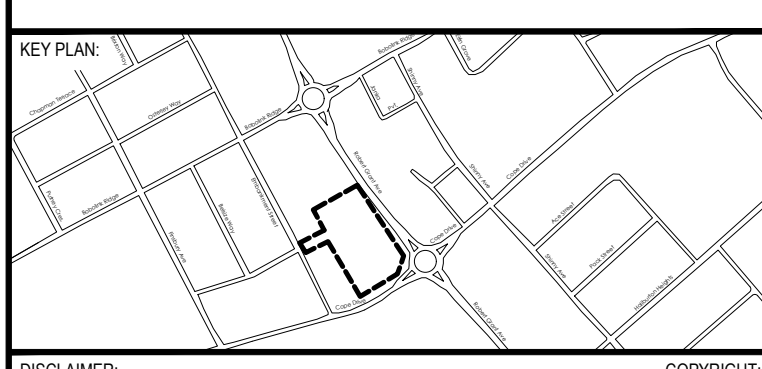
CONSULTANT:  
**M. David Blakely**  
Architect Inc.  
2320 Prince of Wales Dr., Suite 101  
Ottawa, Ontario, K2E 6Z9  
Phone: (613) 226-8811 Fax: (613) 226-7942

SEAL:  
LICENSED PROFESSIONAL ENGINEER  
**D. D. SEARLE**  
100503356  
2022.03.10  
PROVINCE OF ONTARIO

SEAL:  
LICENSED PROFESSIONAL ENGINEER  
**S. P. DAVIDSON**  
100133944  
2022.03.10  
PROVINCE OF ONTARIO



CLIENT REF. #  
PROJECT:  
**TERRACE FLATS**



DISCLAIMER: THIS DRAWING AND DESIGN IS COPYRIGHT PROTECTED WHICH SHALL NOT BE USED, REPRODUCED OR REUSED WITHOUT WRITTEN PERMISSION BY WSP. THE CONTRACTOR SHALL CHECK AND VERIFY ALL DIMENSIONS AND UTILITY LOCATIONS AND REPORT ALL ERRORS AND OMISSIONS PRIOR TO COMMENCING WORK. THIS DRAWING IS NOT TO BE SCALED.

ISSUED FOR REVISION:

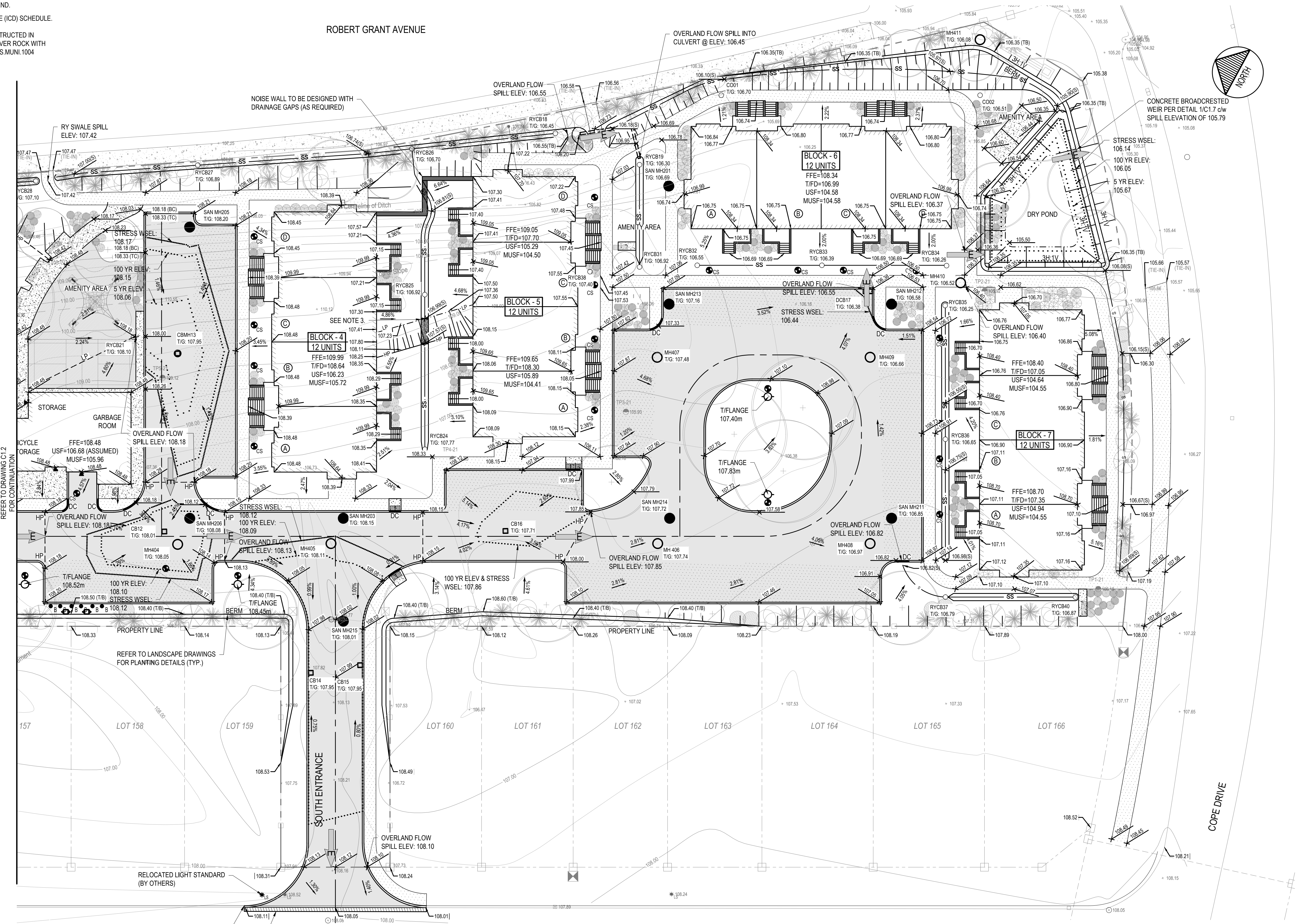
NO.	DATE	DESCRIPTION
4	2022-03-10	RE-ISSUED FOR SPA
3	2022-01-31	RE-ISSUED FOR SPA
2	2021-10-15	RE-ISSUED FOR SPA
1	2021-07-07	ISSUED FOR SPA

IS	RE	DATE	DESCRIPTION

PROJECT NO:	211-01221-00	DATE:	MARCH 2021
ORIGINAL SCALE:	1:250	IF THIS BAR IS NOT 25mm LONG, ADJUST YOUR PLOTTING SCALE.	
DESIGNED BY:	DS		
DRAWN BY:	MH		
CHECKED BY:	SD		
DISCIPLINE:	CIVIL		
TITLE:	TERRACE FLATS SOUTH GRADING PLAN		
SHEET NUMBER:	C1.3		
SHEET #:	5	OF	10
ISSUE:	RE-ISSUED FOR SPA		
DATE OF:	MARCH 10, 2022		
REV #:	0		

- NOTES:
- REFER TO DRAWING C0.1 FOR NOTES AND FULL LEGEND.
  - REFER TO DRAWING C0.1 FOR INLET CONTROL DEVICE (ICD) SCHEDULE.
  - RIP-RAP PAD SHALL BE 1.0m x 3.0m x 0.3x DEEP, CONSTRUCTED IN ACCORDANCE WITH OPSD 810.010 (TYPE 'B') USING RIVER ROCK WITH GRADATION MATCHING 53mm CLEAR STONE PER OPSS.MUNI.1004

- PROPOSED LEGEND:
- ALIGNMENT
  - EDGE OF PAVEMENT
  - CONCRETE BARRIER CURB
  - W WATERMAIN
  - WATER SERVICE
  - ST STORM SEWER
  - STORM SUBDRAIN
  - SA SANITARY SEWER
  - SANITARY SERVICE
  - JUT JOINT UTILITY TRENCH
  - GRADING TOP OF SLOPE
  - GRADING BOTTOM OF SLOPE
  - S SWALE
  - SS SWALE c/w SUBDRAIN
  - 100mm LINE PAINTING
  - 1.8m HIGH PVC FENCE
  - TERRACING
  - STORM MANHOLE
  - REAR YARD CATCH BASIN/CLEAN OUT
  - CATCH BASIN MANHOLE
  - CATCH CAN
  - SANITARY MANHOLE
  - FIRE HYDRANT
  - WATERMAIN VALVE
  - TWSI
  - BUILDING ENTRANCE
  - SIGN
  - 108.00 x GRADE ELEVATION
  - 105.00 (TB) x TOP OF BERM GRADE ELEVATIC
  - FULL DEPTH ASPHALT
  - PARTIAL DEPTH ASPHALT
  - CONCRETE SIDEWALK
  - ASPHALT SIDEWALK
  - BUILDING
  - RIVER STONE
  - EMERGENCY OVERLAND FLOW ROUTE



TERRACE FLATS - PONDING DATA

PONDING ZONE ID	OUTLET STRUCTURE	MAX. 100-YEAR PONDING DEPTH (mm)	VOLUME @ 100-YEAR (m³)	AREA @ 100-YEAR (m²)	STRESS TEST WSEL (m)
7	CB12	90	2	76	108.12
8	CB13	200	13	224	108.18
9	CB14 & CB15	140	16	240	108.12
10	CB16	150	3	111	107.86
11	POND OUTLET	540	68	147	106.14

**APPROVED**  
By Allison Hamlin at 5:26 pm, Jun 28, 2022

*Allison Hamlin*  
ALLISON HAMLIN  
MANAGER (A), DEVELOPMENT REVIEW WEST  
PLANNING, REAL ESTATE & ECONOMIC DEVELOPMENT  
DEPARTMENT, CITY OF OTTAWA