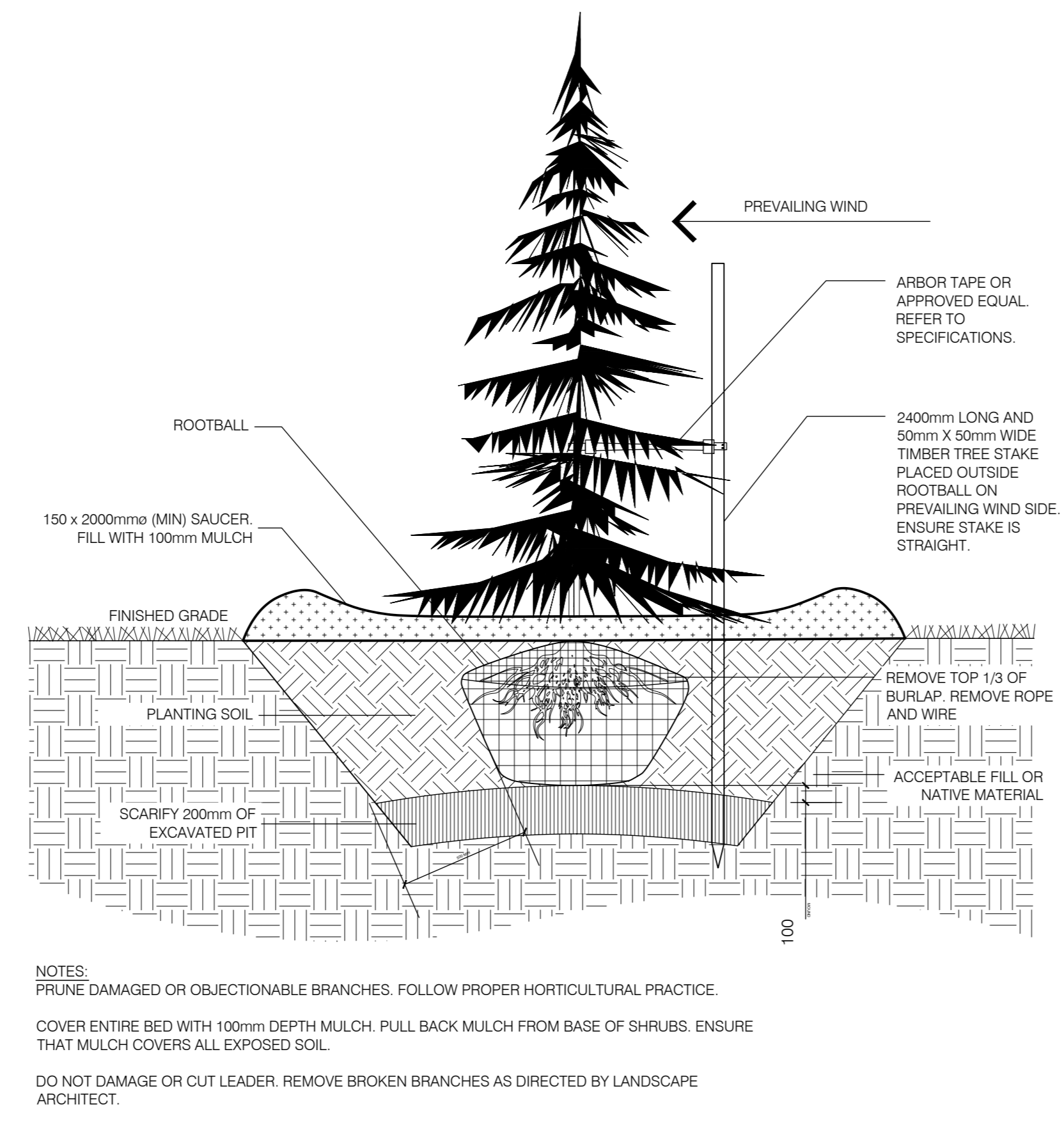
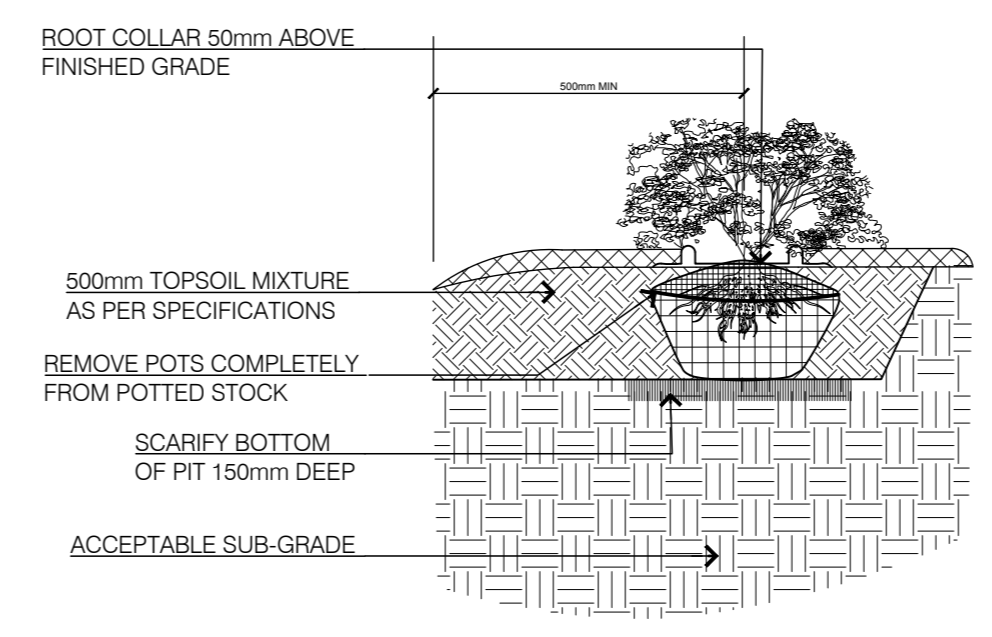


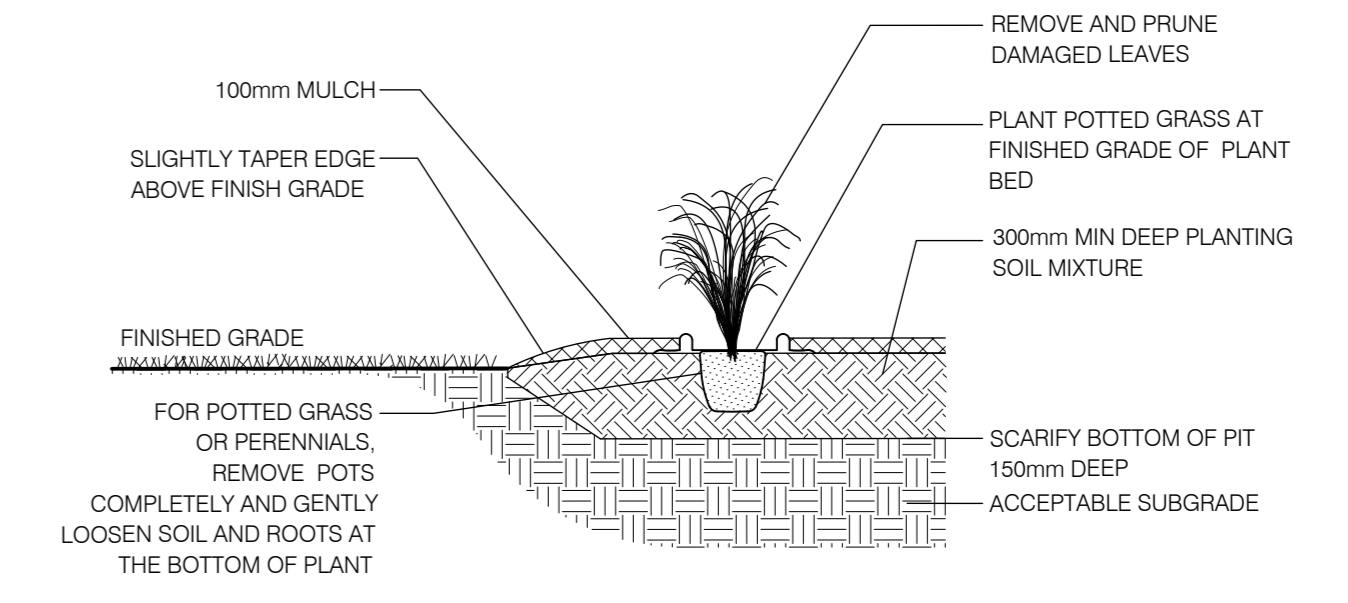
1 DECIDUOUS TREE PLANTING  
L1-2 1:20



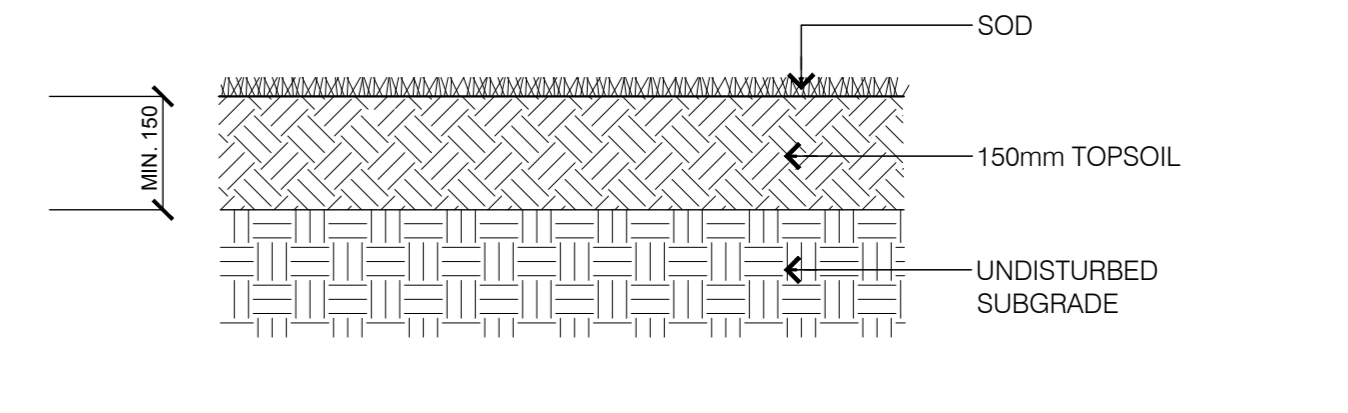
2 CONIFEROUS TREE PLANTING  
L1-2 1:20



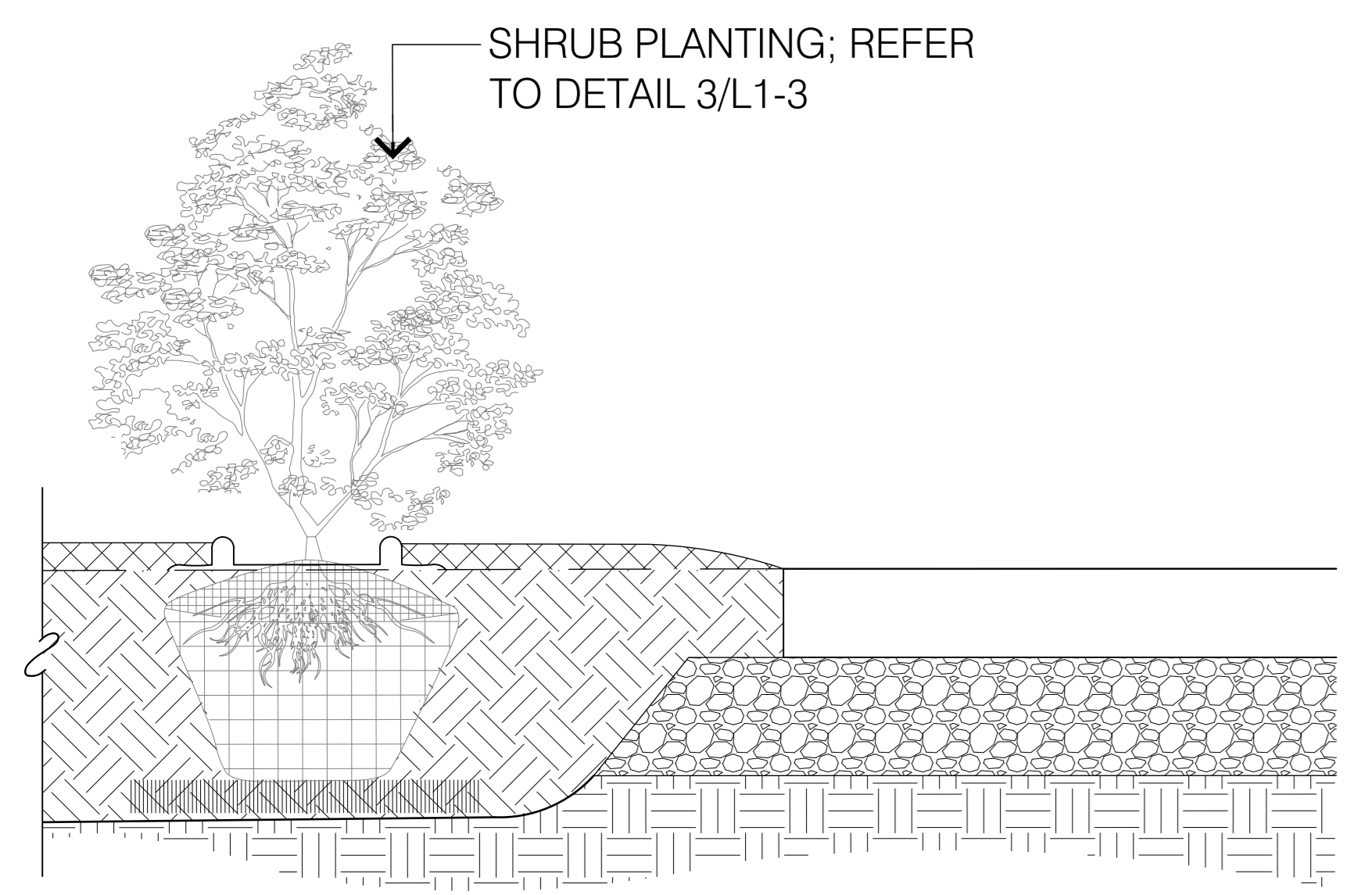
3 SHRUB PLANTING  
L1-2 1:20



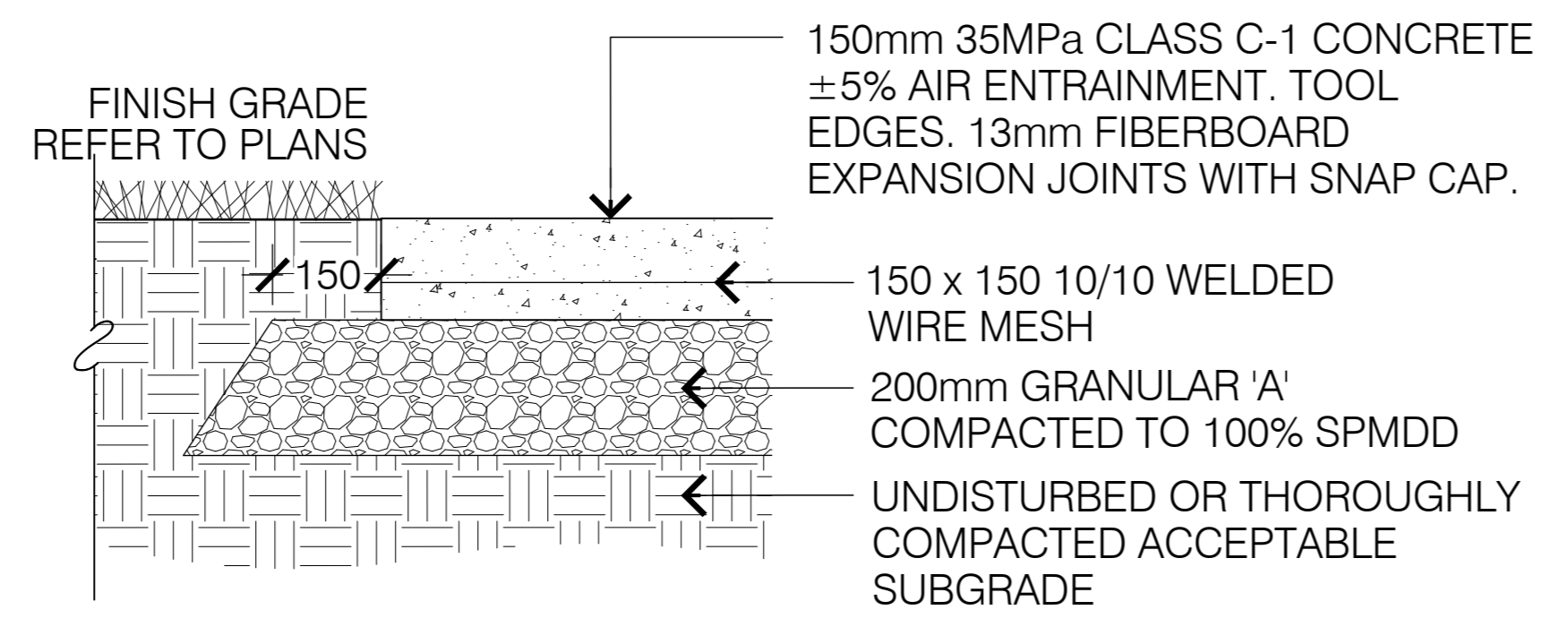
4 PERENNIAL PLANTING  
L1-2 1:20



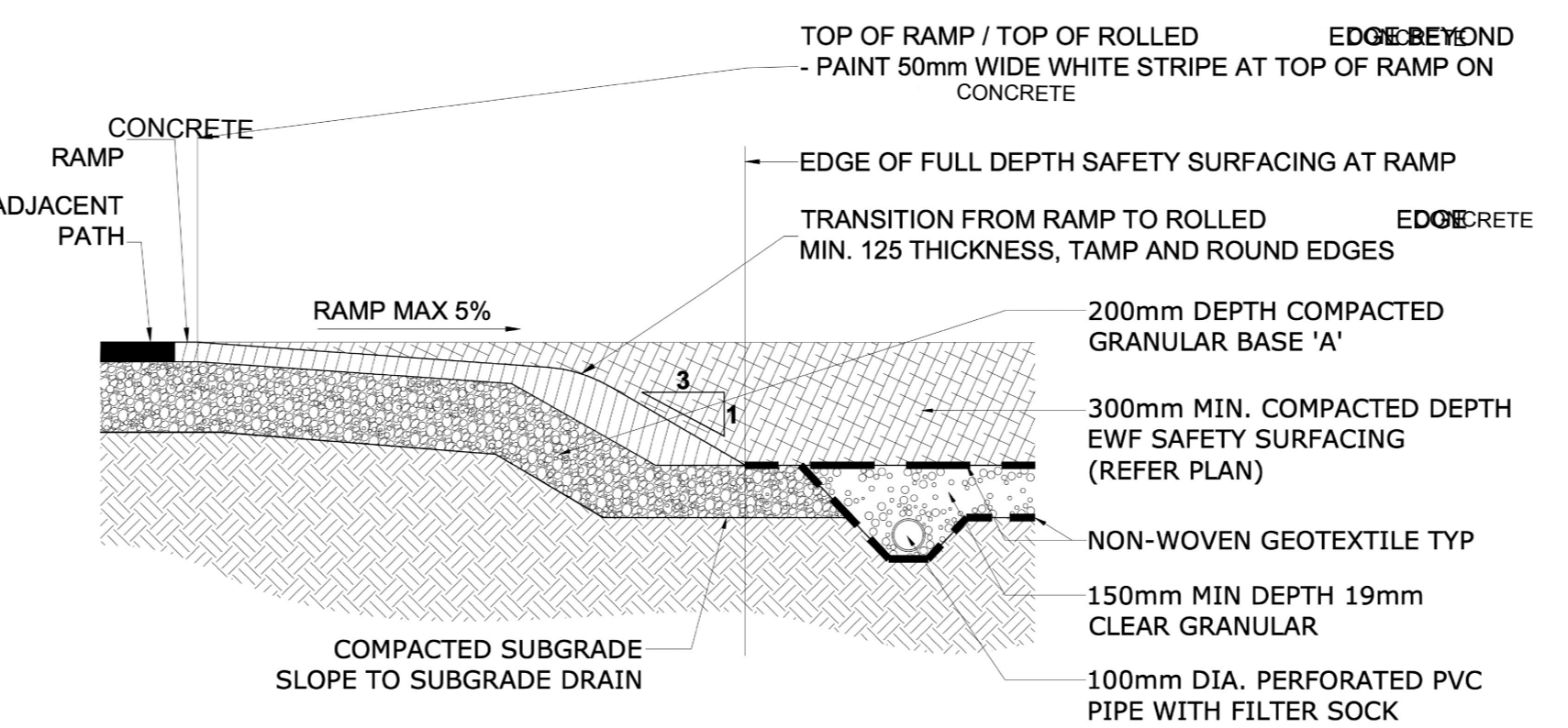
5 SOD PLANTING  
L1-2 1:10



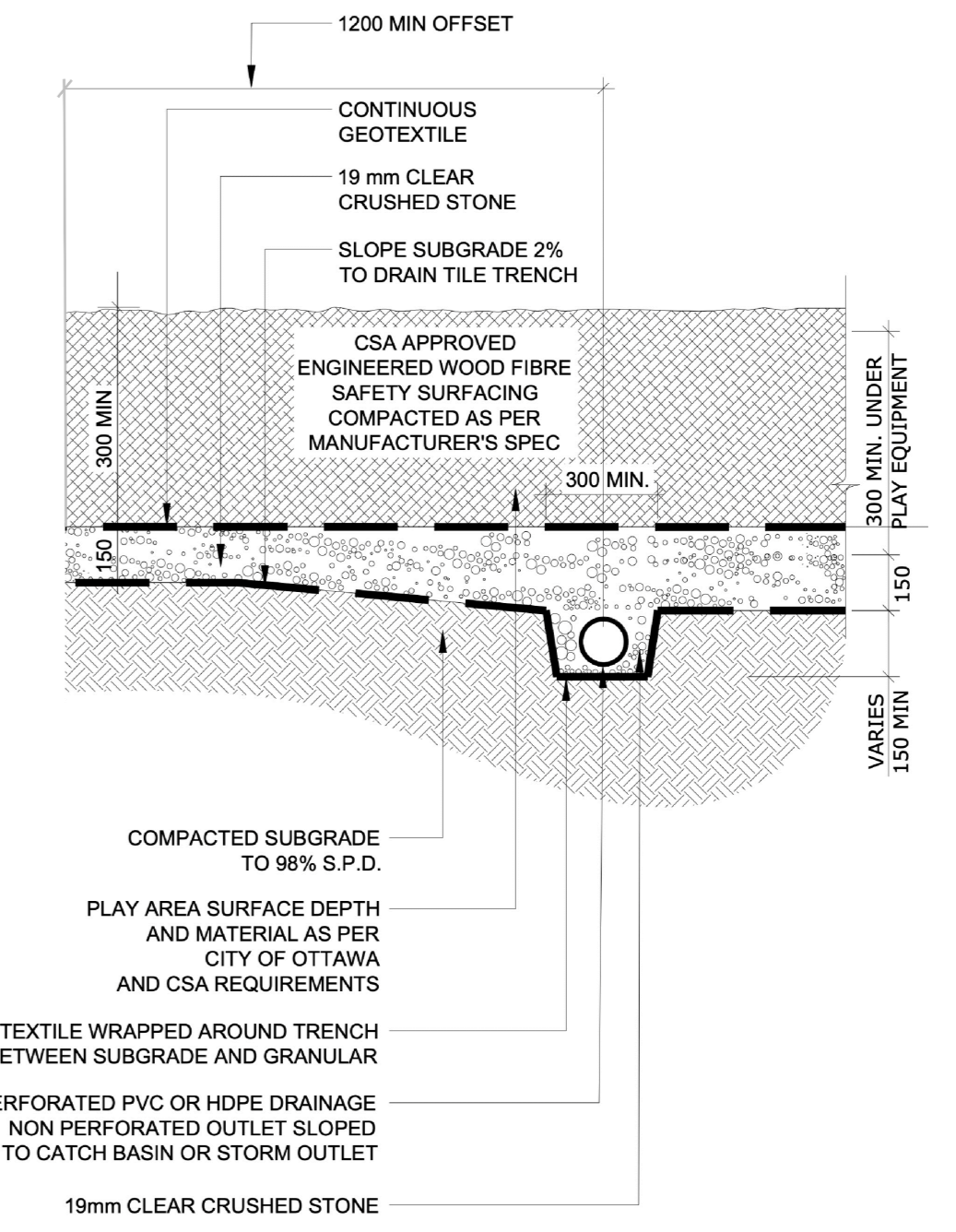
6 SHRUB PLANTING AND PATHWAY  
L1-2 1:10



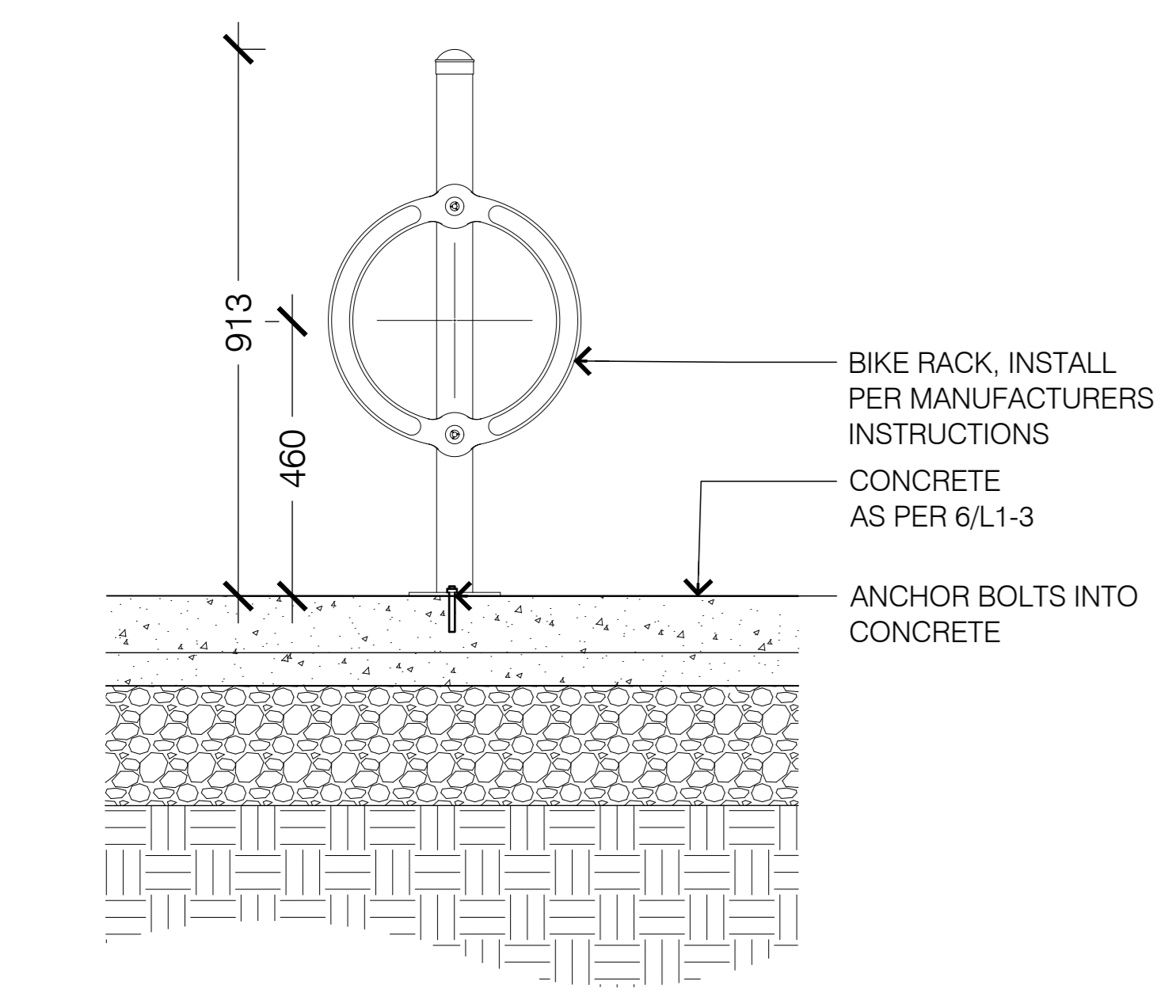
7 LIGHT DUTY CONCRETE  
L1-2 1:10



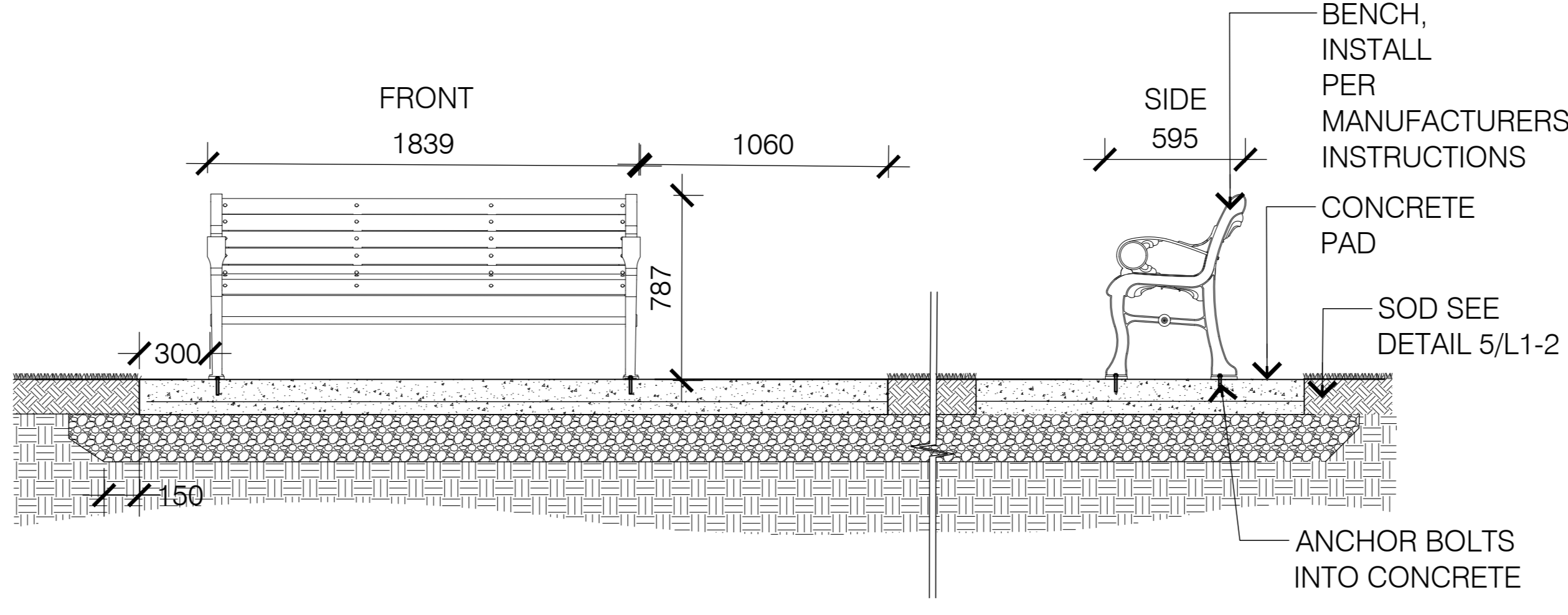
8 CONCRETE RAMP FOR PLAYGROUND  
L1-2 N.T.S.



9 ENGINEERED WOOD FIBRE  
L1-2 N.T.S.



10 BIKE RACK  
L1-2 1:10



11 WOOD BENCH ON CONCRETE PAD  
L1-2 1:20



**GENERAL NOTES:**

- ALL GENERAL SITE INFORMATION AND CONDITIONS COMPILED FROM EXISTING PLANS, SURVEYS, AERIAL PHOTOS, AND CONSULTANTS FIELD NOTES.
- CONTRACTOR SHALL VERIFY CONSTRUCTION MARKS WITH ALL RELEVANT ENGINEERING AND RELATED DRAWINGS AND DOCUMENTS.
- REFER TO ENGINEERING DRAWINGS FOR GRADING AND SERVING LAYOUTS.
- THE LOCATION OF THE TREES SHOWN ON THIS PLAN ARE APPROXIMATE AND SHALL NOT BE SCALED FROM THIS DRAWING. THIS PLAN MUST BE READ IN CONJUNCTION WITH THE APPROVED DEVELOPMENT UTILITY PLAN AND THE RESTRICTIONS LISTED BELOW IN ORDER TO PROTECT EXISTING TREES.
- DO NOT SCALE THE DRAWING.
- REPORT ANY DISCREPANCIES PRIOR TO COMMENCING WORK. NO RESPONSIBILITY IS ASSUMED BY THE CONSULTANT FOR UNRECORDED SUBSURFACE CONDITIONS.
- THE CONSULTANT SHALL ENSURE THAT ALL UTILITY LOCATIONS ARE OBTAINED PRIOR TO ANY EXCAVATION OR CONSTRUCTION.
- INDIVIDUAL UTILITY CO. MUST BE CONTACTED FOR CONFIRMATION OF UTILITY DEPTHS AND LOCATIONS PRIOR TO DIGGING.
- CONTRACTOR TO CHECK AND VERIFY ALL DIMENSIONS ON SITE AND REPORT ALL AREAS AND ITEMS DAMAGED AS A RESULT OF CONSTRUCTION ACTIVITIES TO THE SATISFACTION OF THE CONSULTANT, INCLUDING AREAS BEYOND THE PROPERTY LINE.
- CONTRACTOR SHALL BE RESPONSIBLE FOR THE PROTECTION OF ALL EXISTING UTILITIES AS SHOWN FOR CONSTRUCTION.
- LANDSCAPE ARCHITECT IS NOT RESPONSIBLE FOR CONSTRUCTION OF THE ACCURACY OF THE POSITION OF UTILITIES SHOWN.
- UNWARRANTED.
- THIS DRAWING IS AN INSTRUMENT OF SERVICE AND REQUIRES THE SIGNATURE OF THE REGISTERED PROFESSIONAL LANDSCAPE ARCHITECT AS PREScribed BY LASHLEY + ASSOCIATES CORPORATION.

**OFFSET AND CLEARANCE NOTES:**

- CONTRACTOR TO VERIFY PLANTING BEDS PATHWAYS TO APPROVAL OF LANDSCAPE ARCHITECT PRIOR TO ANY CONSTRUCTION.
- ALL TREES MUST BE CLEAR OF INTERSECTION (SOD) TRAVELERS OBTAIN APPROVAL OF PLANNING DEPARTMENT PRIOR TO CONSTRUCTION.
- TREE PLANTING SHALL BE HAND-DIGGERS FOR THOSE LOCATIONS WITH LESS THAN 1M CLEARANCE TO ANY UNDERGROUND UTILITY.
- TREES SHALL BE PLACED TO PROVIDE A MINIMUM SEPARATION DISTANCE OF 3M FROM A STREET OR SIDEWALK AND A MINIMUM DISTANCE OF 1.5M FROM A STREET OR SIDEWALK. 1.5M FROM SIDEWALKS, 1.5M FROM BACK OF CURB FOR CONIFEROUS TREES.
- TREES ARE TO BE LOCATED A MINIMUM DISTANCE OF 1.5M FROM WATER AND SEWER SERVICES AND A MINIMUM DISTANCE OF 1.5M FROM POWER LINES.
- URBES AND MEDICAL TREES ARE TO BE LOCATED A MINIMUM DISTANCE OF 3M FROM A STREETLIGHT. CLEARANCES FROM UTILITY POLES SHALL BE AS PER THE CITY OF OTTAWA PLANTING SPECIFICATIONS.
- TREES ARE TO BE LOCATED A MINIMUM DISTANCE OF 1.5M FROM COMMUNITY MANAGES AREAS.
- TREES ARE TO BE PLANTED IN 100mm DEPTH ACCESS ASSESSMENTS OR DRAINAGE DITCHES.
- REFER TO ENGINEERING CROSS SECTIONS FOR ACTUAL LOCATION OF 200V UTILITY (HIGH VOLTAGE).

**LANDSCAPE NOTES:**

- LANDSCAPE CONTRACTOR SHALL VERIFY CONSTRUCTION MARKS BEFORE WITH THE GRADING SURVEYOR. RESOURCES AS REQUIRED PRIOR TO CONSTRUCTION.
- REPAIRS TO EXISTING SURFACES SHALL BE INSTALLED WITH SAME SPECIFICATIONS AS THE ORIGINAL SURFACE.
- ALL PLANTING SHALL BE DONE IN ACCORDANCE WITH THE CITY OF OTTAWA PLANTING SPECIFICATIONS FOR NURSERY STOCK (LATEST EDITION, PUBLISHED BY THE CANADIAN NURSERY TRADE ASSOCIATION).
- PLANT SUBSTITUTIONS SHALL NOT BE PERMITTED UNLESS APPROVED BY THE LANDSCAPE ARCHITECT AND THE CITY OF OTTAWA.
- NATIVE AND NON-NATIVE WILD-GROWN PLANT STOCK IS SPECIFIED HEREIN AS REFERRED TO IN THE PROVISIONS OF THE CITY OF OTTAWA PLANTING SPECIFICATIONS FOR NURSERY STOCK (LATEST EDITION, PUBLISHED BY THE CANADIAN NURSERY TRADE ASSOCIATION).
- ALL PLANTING SHALL BE DONE IN ACCORDANCE WITH THE CITY OF OTTAWA PLANTING SPECIFICATIONS FOR NURSERY STOCK (LATEST EDITION, PUBLISHED BY THE CANADIAN NURSERY TRADE ASSOCIATION).
- PLANTS SHALL BE WATERED REGULARLY AND AS PER MANUFACTURER'S RECOMMENDATIONS.
- ON SITE, ALL PLANTS SHOULD BE PROTECTED FROM SUN AND DRIVING WINDS AND SHOULD BE WATERED REGULARLY.
- PITS AND PLANTING BEDS SHOULD BE LOCATED ACCORDING TO THE DRAWINGS AND SHALL BE SUFFICIENTLY DEEP TO ACCOMMODATE THE ROOTBALLS.
- ALL SURFACES OF PLANTING BEDS, PERENNIALS AND SAUCERS FOR TREES SHALL BE FINISHED TO THE FINISH GRADE AND SHALL BE COMPACTED TO 100% S.P.M.D. (REFER TO CITY OF OTTAWA PLANTING SPECIFICATIONS FOR NURSERY STOCK (LATEST EDITION, PUBLISHED BY THE CANADIAN NURSERY TRADE ASSOCIATION)).
- THE PLANTS SHALL BE MARKED INDIVIDUALLY IN THE PLANTING HOLES WITH COMPOST, BONE MEAL, AND MICROSPHERE BLENDED, FERTILISER ACCORDING TO MANUFACTURER'S RECOMMENDATIONS.
- PLANTS SHOULD BE WATERED LESS THAN AN HOUR AFTER PLANTING AND AGAIN IN THE SAME DAY.
- ALL DECIDUOUS TREES SHALL BE PROTECTED AGAINST ICECUTS WITH AN EXPANDED POLYETHYLENE SHEATHING (EPP) FROM THE TRUNK TO THE BASE OF THE TRUNK. THE SHEATHING SHALL BE INSTALLED BY THE CONTRACTOR.
- WIND PROTECTION, NECESSARY PROTECTION SHALL BE INSTALLED FOR ALL PLANTS TO PROTECT AGAINST WINDS OR UNLIFT DAMAGE BY SNOW. FOR PLANTS TO BE PROTECTED BY WIND PROTECTION, THE PROTECTION SHALL BE INSTALLED AND APPROVED AT THE END OF THE PLANTING WORK BY THE LANDSCAPE ARCHITECT.
- CONTIGUOUS TREES TO BE PROTECTED WITH A SHADE AT DRAINAGE CHANNELS NEARBY. HORIZONTAL BRANCHES NEARBY SHALL BE TRIMMED TO PREVENT SNOWFALL.
- SOIL FOR ALL LOTS AND COMMON AREAS SHALL BE NO. 1 NURSERY GRADE SOIL CONFORMING TO THE CANADIAN NURSERY SOIL SPECIFICATIONS. INSTALLED WITHIN 150mm TOPSOIL OVER EXISTING SUBGRADE.

**APPROVED**  
By Allison Hamlin at 5:24 pm, Jun 28, 2022

**MANAGER (A), DEVELOPMENT REVIEW WEST PLANNING, REAL ESTATE & ECONOMIC DEVELOPMENT DEPARTMENT, CITY OF OTTAWA**

**CLIENT:**  
RICH CRAFT Group Of Companies

**KEY MAP:**

**DATE:** 15/10/2021  
**DESCRIPTION:** SPA REVISION SUBMISSION

**NO. DATE DESCRIPTION**

**SEAL:** NORTH

**CONSULTANT:**  
LASHLEY + ASSOCIATES  
100-108 GLEADSTONE AVENUE  
OTTAWA, ON K1Y 3E8  
T 613 293 8078  
F 613 293 8077  
W LashleyA.com

**PROJECT:**  
84 UNIT TERRACE FLATS KANATA  
BLOCK 344, ONTARIO, ON

**DRAWING TITLE:**  
LANDSCAPE DETAILS

**DATE:** 15/10/2021  
**DRAWING NO.:**  
**SCALE:** AS SHOWN  
**DRAWN BY:** K.I.  
**LA PROJECT NO.:** 21793-1

**L1-2**