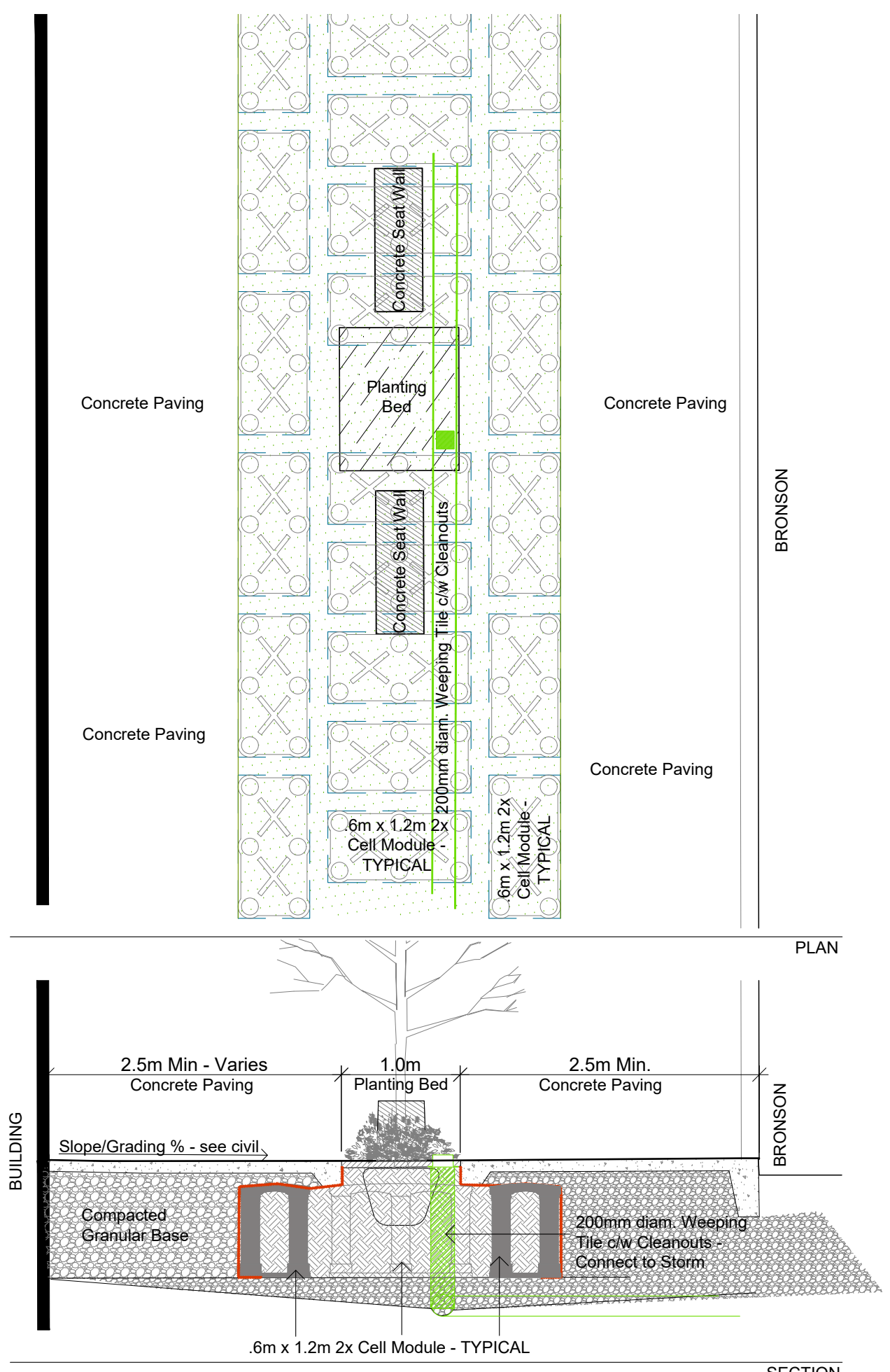
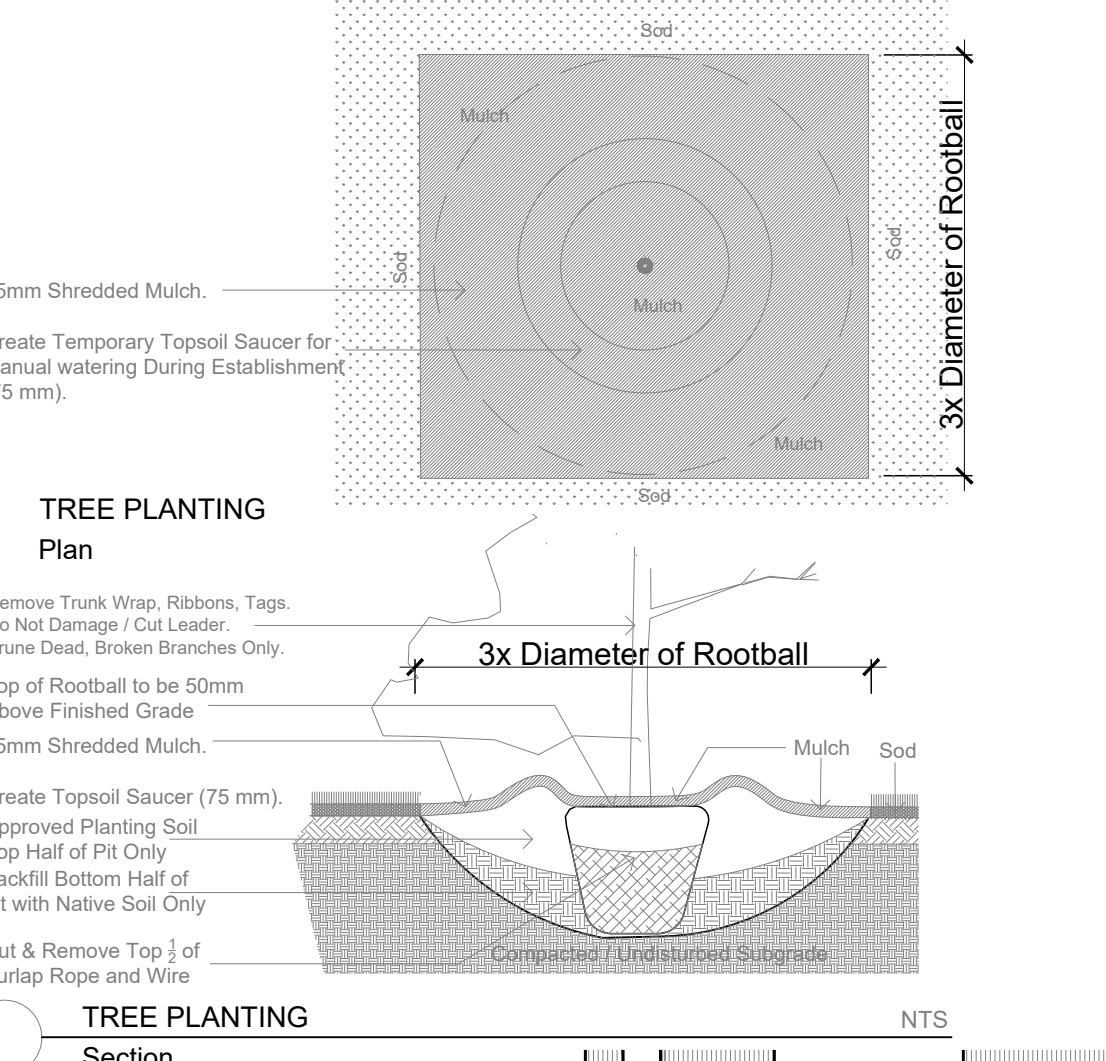


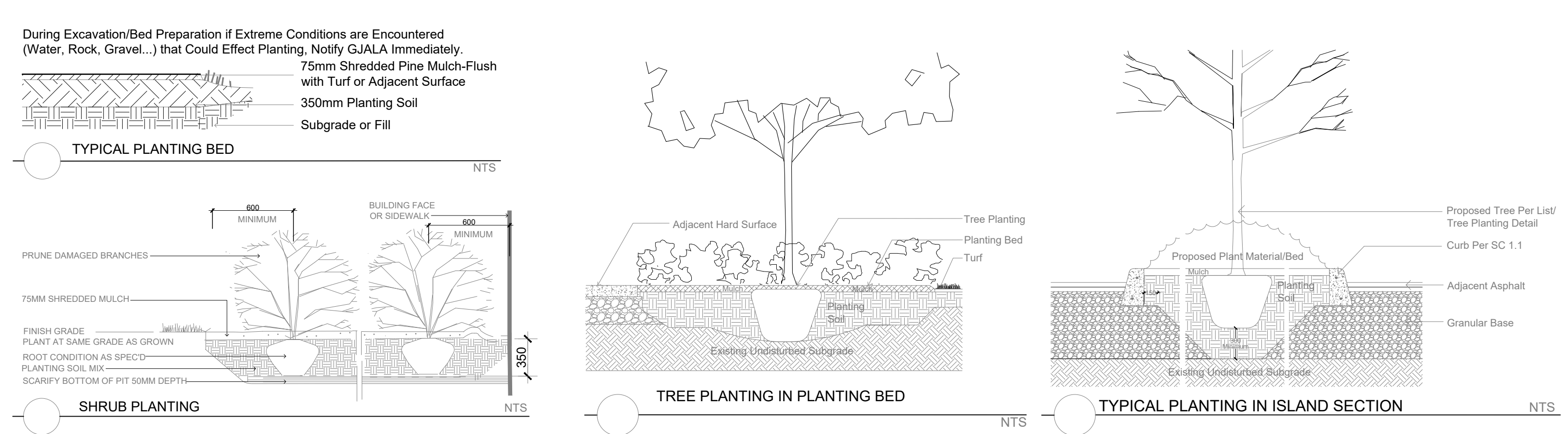
TREES - 770-774 Bronson Avenue & 557 Cambridge Street					
Code	Qty.	Botanical Name	Common Name	Size	Condition
AG	1	Aesculus glabra	Ohio Buckeye	50mm cal	B + B specimen
AR	1	Acer rubrum	Red Maple	60mm cal	B + B specimen
AS	1	Acer saccharum	Sugar Maple	60mm cal	B + B specimen
BP	1	Betula papyrifera	Paper Birch	60mm cal	B + B specimen
CC	1	Carya cordiformis	Bitternut Hickory	50mm cal	B + B specimen
CO	6	Celtis occidentalis	Common Hackberry	70mm cal	B + B specimen
GB	3	Ginkgo biloba	Maidenhair Tree	70mm cal	B + B specimen
GD	1	Gymnocladus dioica	Kentucky Coffee Tree	60mm cal	B + B specimen
GV	1	Ostrya virginiana	Hophornbeam Ironwood	60mm cal	B + B specimen
QM	1	Quercus macrocarpa	Burr Oak	60mm cal	B + B specimen
PG	6	Picea glauca	White Spruce	1.5m HT.	B + B specimen

SHRUBS - 770-774 Bronson Avenue & 557 Cambridge Street					
Code	Qty.	Botanical Name	Common Name	Size	Condition
ac	30	Amelanchier canadensis	Sensiberry	100cm HT.	Pot
ca	15	Cornus alternifolia	Pagoda Dogwood	60cm HT.	Pot
cr	25	Cornus racemosa	Gray Dogwood	100cm HT.	Pot
HK	100	Hypericum kalmianum	St. John's Wort	30cm HT.	Pot
HP	50	Hypericum prolificum	Shrubby St. John's Wort	50cm HT.	Pot
SA	100	Spiraea alba	Meadowsweet	60cm HT.	Pot
SB	100	Spiraea bumalda 'Dart's Red'	Dart's Red Spirea	40cm HT.	Pot
sv	20	Syringa vulgaris 'Alba'	White Common Lilac	100cm HT.	Pot
vl	50	Viburnum lentago	Nannyberry	90cm HT.	Pot

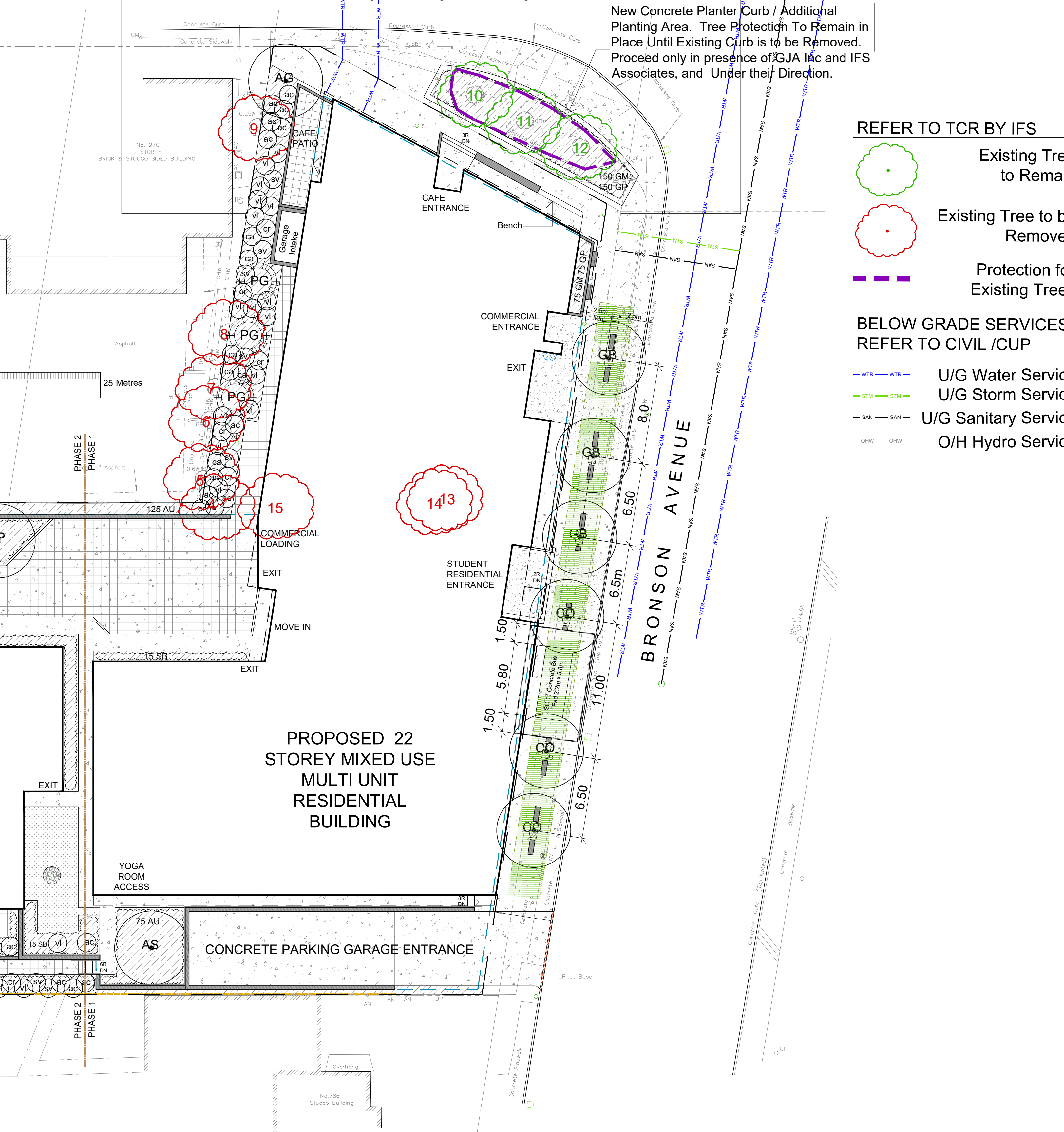
PERENNIALS / GROUNDCOVER - 770-774 Bronson Avenue & 557 Cambridge Street					
Code	Qty.	Botanical Name	Common Name	Condition	
AU	250	Arctostaphylos uva ursi	Bearberry	9cm Pot	
GM	500	Geranium macrorrhizum	Bigroot Geranium	9cm Pot	
GP	500	Geranium psilostemon 'Gerwat'	Rozanne Geranium	9cm Pot	
PV	150	Panicum virgatum	Switch Grass	9cm Pot	



TYPICAL BRONSON STREETSCAPE PLANTING CROSS SECTION with PLAN ABOVE
CONTRACTOR TO PROVIDE SHOP DRAWING (BY DEEPROOF) FOR SILVA CELL PLANTING AREAS - FOR REVIEW / COMMENT / APPROVAL BY GJA INC. and CITY OF OTTAWA.



During Excavation/Bed Preparation if Extreme Conditions are Encountered (Water, Rock, Gravel...) that Could Effect Planting, Notify GJALA Immediately.
75mm Shredded Pine Mulch-Flush with Turf or Adjacent Surface
350mm Planting Soil
Subgrade or Fill



REFER TO TCR BY IFS

- Existing Tree to Remain
- Existing Tree to be Removed
- Protection for Existing Trees

BELOW GRADE SERVICES REFER TO CIVIL /CUP

- U/G Water Service
- U/G Storm Service
- U/G Sanitary Service
- O/H Hydro Service

LANDSCAPE PLAN LEGEND

- Coniferous Tree
- Deciduous Tree
- Planting Bed
- Soil Cell
- Turf
- Concrete Paving 1
- Concrete Paving 2
- Pavers
- Retaining Wall
- Limit of Parking Garage Below
- FD Siamese Connection

Drawing Remains the Property of/Copyright Reserved by Gino J. Aiello Landscape Architect. Do Not Use or Reproduce Without Approval of Gino J. Aiello.
NOT To Be Used For Construction Unless indicated by Revision: "FOR LANDSCAPE CONSTRUCTION".
Contractor is Responsible for Verification of Site Locations of all Utilities. Report any Discrepancies Between Site and Drawing Immediately to Gino J. Aiello. Do NOT Proceed Until Clarified.
TURF AREAS TO BE SOD C/W 150MM DEPTH TOPSOIL ON APPROVED SUBGRADE | SOD TO BE #1 GRADE TURFGRASS NURSERY SOD per NSGA - Fine Fescue/Kentucky Bluegrass Sod | PLANTING MIX TO BE APPROVED BY LANDSCAPE ARCHITECT | PLANT MATERIAL TO MEET CNLA STANDARDS/BE APPROVED BY LANDSCAPE ARCHITECT PRIOR TO PLANTING | ALL MATERIALS & WORK TO BE MAINTAINED UNTIL FINAL ACCEPTANCE. (MOWING TURF, WEEDING BEDS, WATERING TURF & PLANTS) & INCLUDE 1 YEAR WARRANTY FROM DATE OF FINAL ACCEPTANCE | PROVIDE WATERING OF ALL PLANT MATERIAL AS REQUIRED FOR PROPER ESTABLISHMENT, UNTIL END OF WARRANTY PERIOD | REFER TO CIVIL ENGINEER'S DRAWING FOR ELEVATIONS / GRADING |
The Landscape Plan is to be read in conjunction with the grading, servicing, site and survey plan | Bare root material to be planted in season only | All plant material locations to be staked on site by the landscape contractor and checked by the landscape architect prior to planting | All trees to be preserved on or directly adjacent to the site will be protected | Plant material are to be installed a minimum of, 3.0m away from any part of any hydro transformer, 3.0m corridor between a fire hydrant and the curb, a 2.5m radius beside or behind a fire hydrant, 2.0m from any servicing/utility line or structure |

No.	Revision	Date
6	WATER SERVICE UPDATED	2024 01 31
5	FIFTH SUBMISSION SPC	2023 11 15
4	FOURTH SUBMISSION SPC	2023 09 18
3	THIRD SUBMISSION SPC	2023 06 15
2	SECOND SUBMISSION SPC	DECEMBER 15 2022
1	FIRST SUBMISSION SPC	MARCH 5 2021
0	FOR REVIEW / COORDINATION	JAN/FEB. 2021

KATASA Group
Katasa Groupe + Développement 301-69 Jean-Proulx Gatineau, Quebec J8Z 1W2 Canada

GJA INC.
GINO J. AIELLO | LANDSCAPE ARCHITECT
GJALA.COM | (613) 286-5130 | GINO@GJALA.COM
110 DUNDAS ROAD UNIT # 91 OTTAWA (ONTARIO) K2T 6C2

Property Owner: **KATASA Group**
Katasa Groupe + Développement 301-69 Jean-Proulx Gatineau, Quebec J8Z 1W2 Canada

Project: **Mixed Use Residential/Retail Building**
770-774 Bronson Avenue, 557 Cambridge Street

Drawing: **Landscape Plan**

DECEMBER 2020
1:200
City of Ottawa
Dwg - 18887

Sheet Number: **L1**

D07-12-21-0108