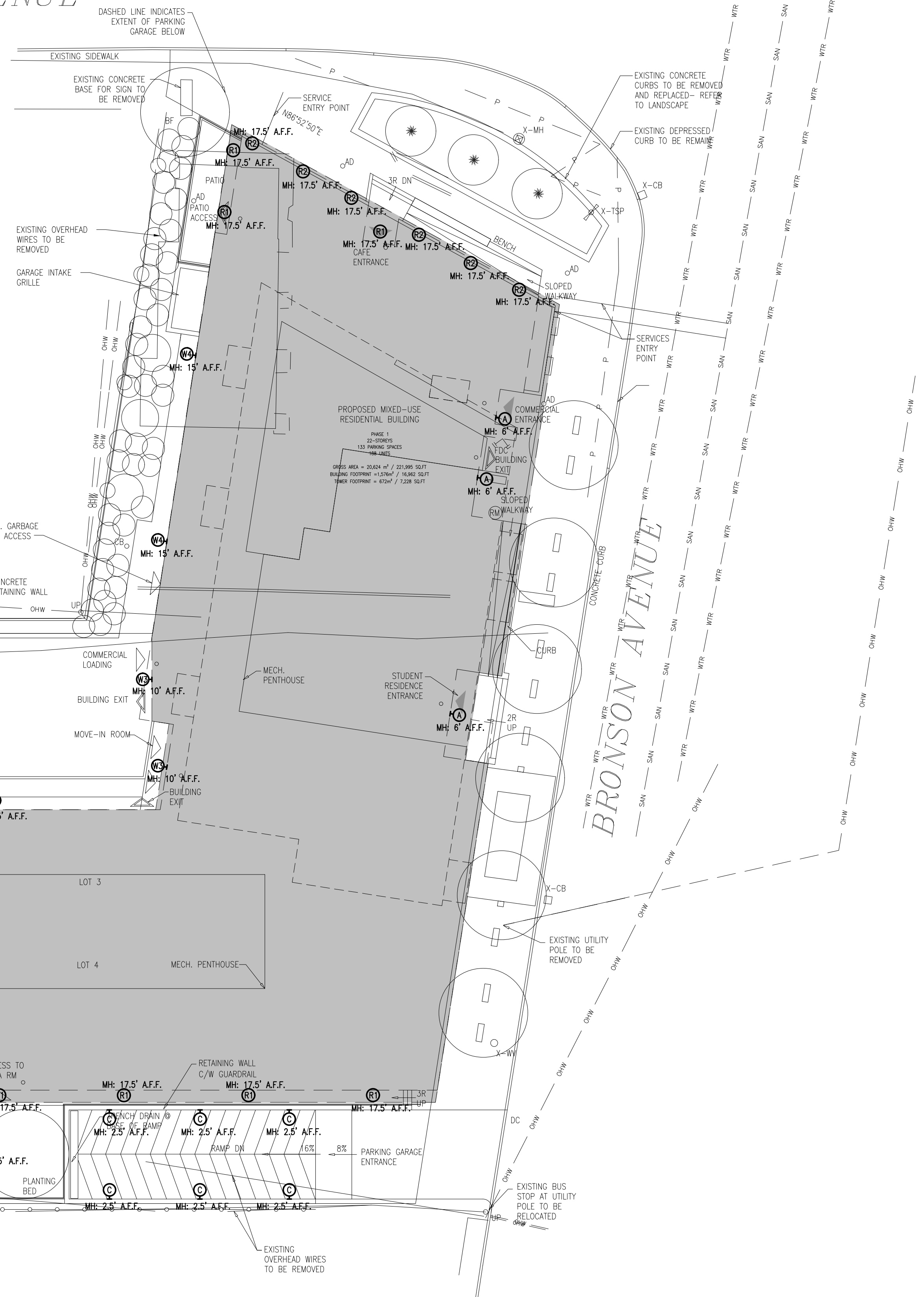


EXTERIOR LIGHTING FIXTURE SCHEDULE									
TYPE	DESCRIPTION	CATALOG NUMBER	LAMPS PER FIXTURE			REMARKS			
			QTY	TYPE	WATTS				
A	EXTERIOR WALL PACK	EUREKA LIGHTING CLIFF 3418/3419	-	LED	11.32	3500K	347	SURFACE	C/W ACCESSORIES
B	EXTERIOR ILLUMINATED BOLLARD	LUMINIS LIGHTING SN825B-L1L8	-	LED	18.43	3500K	347	BOLLARD	C/W ACCESSORIES
C	EXTERIOR WALL PACK	LUMINIS LIGHTING SN82D-L1L8	-	LED	24.1	3500K	347	SURFACE	C/W ACCESSORIES
P1	EXTERIOR LIGHTING POLE	LITHONIA LIGHTING RADPT P1 30K PATH HS	-	LED	25.41	3000K	347	POLE	C/W ACCESSORIES
R1	EXTERIOR CANOPY LIGHT	BEGA LIGHTING	-	LED	22	3500K	347	RECESSED	C/W ACCESSORIES
R2	EXTERIOR CANOPY LIGHT	BEGA LIGHTING	-	LED	22	3500K	347	RECESSED	C/W ACCESSORIES
T	EXTERIOR WALL SCONCE	WAC LIGHTING WS-W69214	-	LED	16.26	3500K	347	SURFACE	C/W ACCESSORIES
W1	EXTERIOR WALL SCONCE	LITHONIA LIGHTING WIDGE2 LED P2 30K 80CRI T4M	-	LED	18.98	3500K	347	SURFACE	C/W ACCESSORIES
W2	EXTERIOR WALL SCONCE	LITHONIA LIGHTING WIDGE2 LED P4 30K 70CRI T4M	-	LED	46.65	3500K	347	SURFACE	C/W ACCESSORIES
W3	EXTERIOR WALL SCONCE	LITHONIA LIGHTING WIDGE1 LED P1 30K 80CRI VW	-	LED	10	3500K	347	SURFACE	C/W ACCESSORIES
W4	EXTERIOR WALL SCONCE	LITHONIA LIGHTING WIDGE2 LED P1 30K 70CRI T1S	-	LED	11.16	3500K	347	SURFACE	C/W ACCESSORIES

NOTES: LIGHT FIXTURES EQUAL IN QUANTITY AND PERFORMANCE ARE ACCEPTABLE.

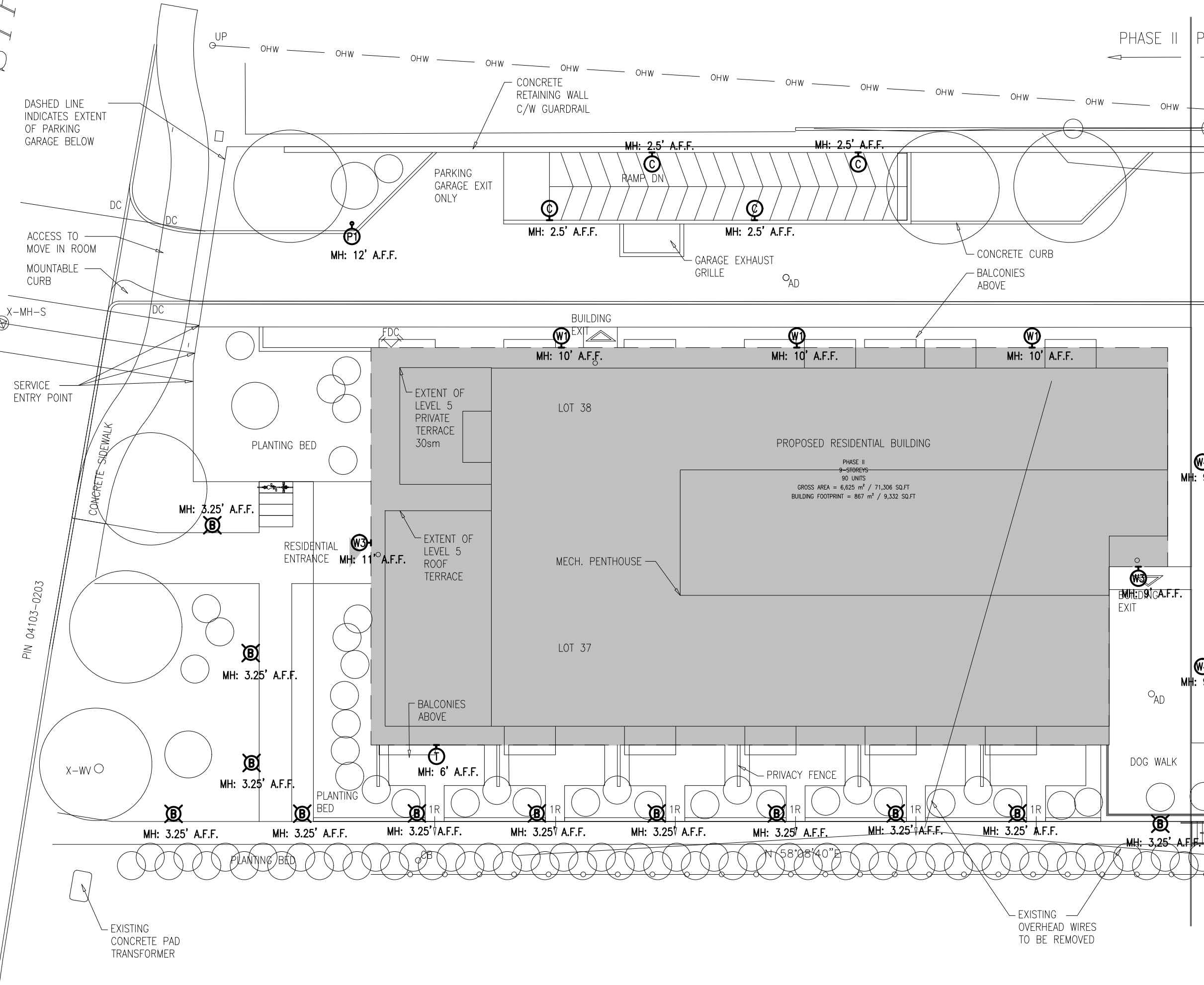
LIGHTING LEGEND	
SYMBOL	DESCRIPTION
1	LIGHT FIXTURE - TYPE AS SHOWN
2	LIGHT FIXTURES ON EMERGENCY POWER OR NIGHT LIGHT - DO NOT SWITCH
3	CEILING MOUNTED LIGHT FIXTURE - TYPE AS SHOWN
4	WALL MOUNTED LIGHT FIXTURE - TYPE AS SHOWN
5	EXTERIOR POLE MOUNTED LIGHT FIXTURE - TYPE AS SHOWN
6	EXTERIOR BOLLARD LIGHT FIXTURE - TYPE AS SHOWN

CARLING AVENUE



CAMBRIDGE STREET

BRONSON AVENUE



1 ELECTRICAL SITE PLAN
E01 1:200



DATE	REVISION	REF
2023-12-19	ISSUED FOR SITE PLAN	-

THE ENGINEER WAIVES ANY AND ALL RESPONSIBILITY AND LIABILITY FOR PROBLEMS WHICH ARISE FROM FAILURE TO FOLLOW THESE PLANS, SPECIFICATIONS AND THE DESIGN INTENT THEY CONVEY, OR FOR PROBLEMS WHICH ARISE FROM OTHER FAILURES TO OBTAIN AND / OR FOLLOW THE ENGINEER'S GUIDANCE WITH RESPECT TO ANY ERRORS, OMISSIONS, INCONSISTENCIES, AMBIGUITIES OR CONFLICTS WHICH ARE ALLEGED.

L'INGÉNIEUR DÉCLINE TOUTE RESPONSABILITÉ DÉCOULANT DE PROBLÈMES FAISANT SUITE AU NON RESPECT DES PLANS, DES SPÉCIFICATIONS ET DE L'INTENTION DU CONCEPT QUI S'INDIQUENT OU DE TOUTES LES PROBLÈMES POUVANT RÉSULTER DU DÉFAUT D'OBTENIR ET / OU DE SUIVRE LES CONSEILS DE L'INGÉNIEUR EN CE QUI CONCERNE LES ERREURS, OMISSIONS, INCONSISTANCES, AMBIGUITÉS OU CONFLITS ALLÉGUÉS.

CE DESSIN EST LA PROPRIÉTÉ LITTÉRAIRE DE GOODKEY WEEDMARK & ASSOCIATES LIMITED ET TOUTS LES DROITS SONT RÉSERVÉS. L'UTILISATION EST INTERDITE SANS LE CONSENTEMENT ÉCRIT DE L'AUTEUR.

NE PAS MESURER LES DESSINS À L'ÉCHELLE

Goodkey Weedmark
Consulting Engineers

GOODKEY WEEDMARK & ASSOCIATES LIMITED
1688 Woodward Dr. Ottawa Ontario Canada K2C 3R8
613 727-5111 Voice
613 727-5115 Fax
www.gwal.com Web

Project north / Nord du projet

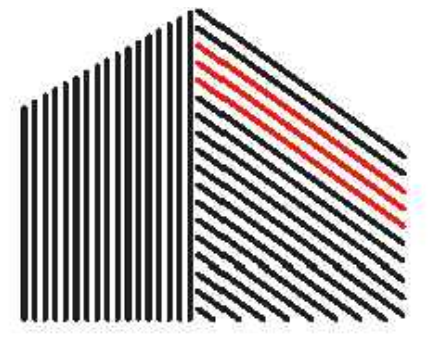
Seal/Scellé

LICENSED PROFESSIONAL ENGINEER
D. B. VIAS
100133120
Dec 19, 2023
PROVINCE OF ONTARIO

Project/Projet
22 STORES APARTMENT BUILDINGS
770-774 BRONSON AVENUE & 557 CAMBRIDGE STREET, OTTAWA

Drawing title/Titre du dessin
ELECTRICAL SITE PLAN

Scale / Échelle	AS NOTED	Project no./No. du projet	2022-705
Design by / Conçu par	L.A.	Drawing/Desin	
Drawn by / Dessiné par	L.A.	E01	
Reviewed by / Examiné par	D.VIAS	OF	2
Date		Revision no.	Acad file/Fichier:



KATASA
Client GROUPE DÉVELOPPEMENT

DATE	REVISION	REF
2023-12-19	ISSUED FOR SITE PLAN	-

THE ENGINEER WAIVES ANY AND ALL RESPONSIBILITY AND LIABILITY FOR PROBLEMS WHICH ARISE FROM FAILURE TO FOLLOW THESE PLANS, SPECIFICATIONS AND THE DESIGN INTENT THEY CONVEY, OR FOR PROBLEMS WHICH ARISE FROM OTHER FAILURE TO OBTAIN AND / OR FOLLOW THE ENGINEER'S GUIDANCE WITH RESPECT TO ANY ERRORS, OMISSIONS, INCONSISTENCIES, AMBIGUITIES OR CONFLICTS WHICH ARE ALLEGED.

THIS DRAWING IS THE PROPERTY OF GOODKEY WEEDMARK & ASSOCIATES LIMITED AND ALL COPYRIGHTS ARE RESERVED. NO USE OF THIS DRAWING MAY BE MADE WITHOUT EXPRESS WRITTEN CONSENT.

DO NOT SCALE DRAWINGS

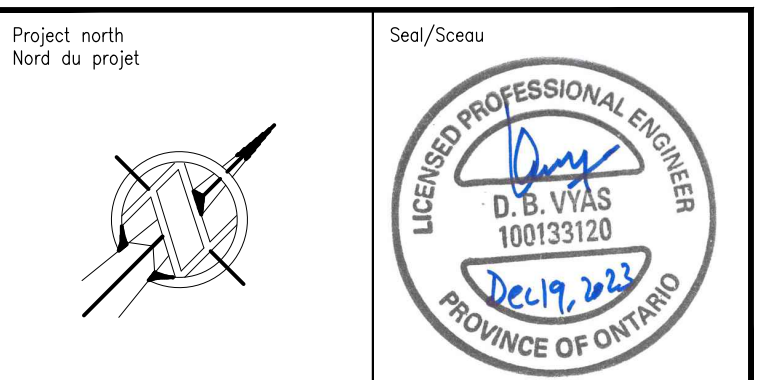
L'INGÉNIEUR DÉCLINE TOUTE RESPONSABILITÉ DÉCOULANT DE PROBLÈMES FAISANT SUITE AU NON RESPECT DES PLANS, DES SPÉCIFICATIONS ET DE L'INTENTION DU CONCEPT QUI S'Y RATTACHENT OU DE TOUTS LES PROBLÈMES POUVANT RÉSULTER DU DÉFAUT D'OBTENIR ET / OU DE SUIVRE LES CONSEILS DE L'INGÉNIEUR EN CE QUI CONCERNE LES ERREURS, OMISSIONS, INCONSISTANCES, AMBIGUITÉS OU CONFLITS ALLÉGUÉS.

CE DESSIN EST LA PROPRIÉTÉ LITTÉRAIRE DE GOODKEY WEEDMARK & ASSOCIATES LIMITED ET TOUTS LES DROITS SONT RÉSERVÉS. L'UTILISATION EST INTERDITE SANS LE CONSENTEMENT ÉCRIT DE L'AUTEUR.

NE PAS MESURER LES DESSINS À L'ÉCHELLE

Goodkey Weedmark
Consulting Engineers

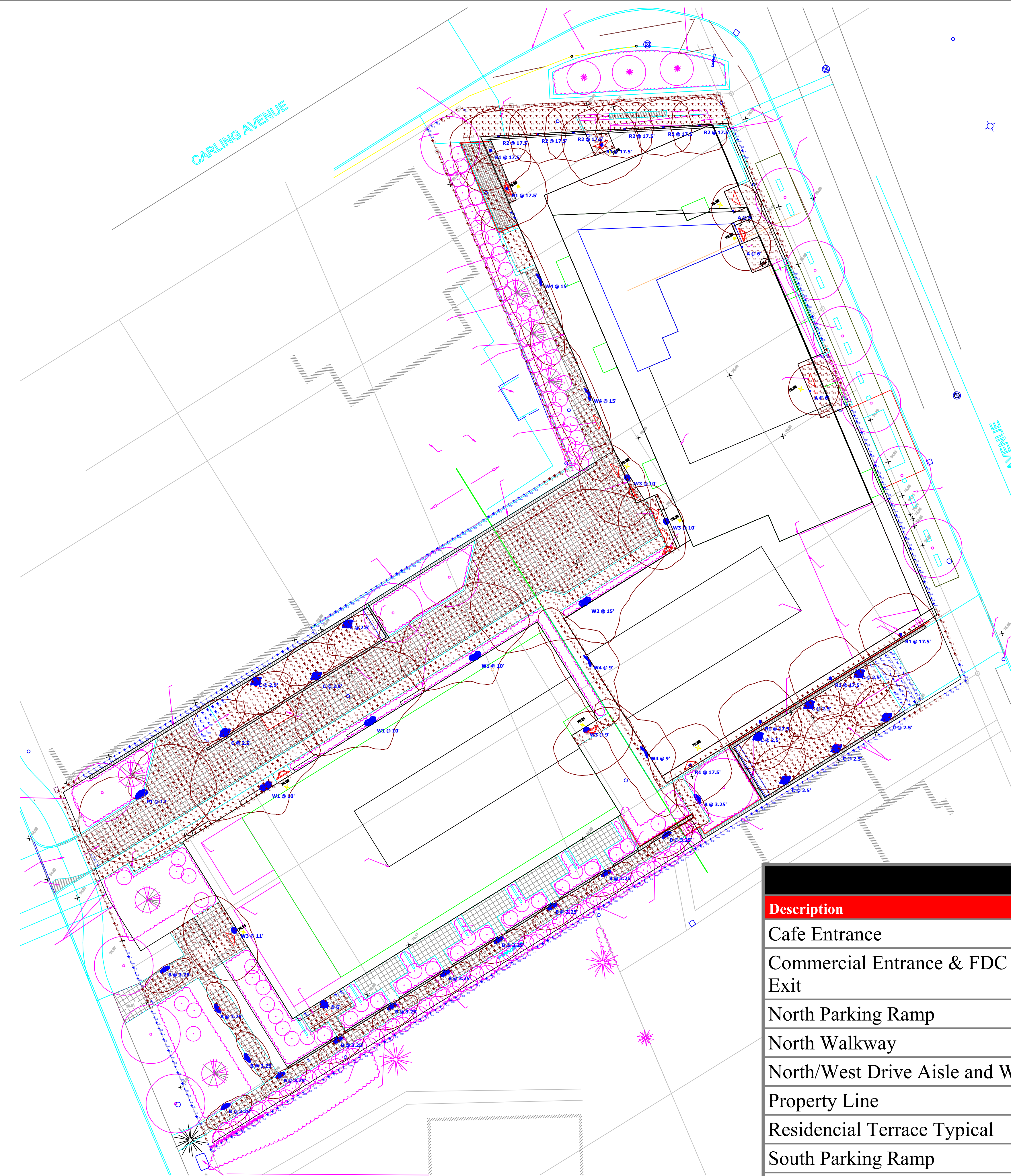
GOODKEY WEEDMARK & ASSOCIATES LIMITED
1688 Woodward Dr. Ottawa Ontario Canada K2C 3R8
613 727-5111 Voice
613 727-5115 Fax
www.gwaei.com Web



Project/Projet
22 STOREY APARTMENT BUILDINGS
770-774 BRONSON AVENUE & 557 CAMBRIDGE STREET, OTTAWA

Drawing title/Titre du dessin
ELECTRICAL SITE PHOTOMETRIC

Scale/Echelle	AS NOTED	Project no./No. du projet	2022-705
Design by/Conçu par	L.A.	Drawing/Desin	
Drawn by/Dessiné par	L.A.	E02	
Reviewed by/Examiné par	D.VYAS	OF	2
Date		Revision no.	Acad file/Fichier



Statistics						
Description	Symbol	Avg	Max	Min	Max/Min	Avg/Min
Cafe Entrance	+	6.8 fc	8.5 fc	4.2 fc	2.0:1	1.6:1
Commercial Entrance & FDC Building Exit	+	1.2 fc	5.1 fc	0.1 fc	51.0:1	12.0:1
North Parking Ramp	+	1.4 fc	12.9 fc	0.0 fc	N/A	N/A
North Walkway	+	4.2 fc	13.4 fc	0.1 fc	134.0:1	42.0:1
North/West Drive Aisle and Walkway	+	1.6 fc	8.7 fc	0.4 fc	21.8:1	4.0:1
Property Line	+	0.1 fc	0.5 fc	0.0 fc	N/A	N/A
Residential Terrace Typical	+	0.5 fc	1.1 fc	0.0 fc	N/A	N/A
South Parking Ramp	+	1.3 fc	12.0 fc	0.0 fc	N/A	N/A
Student Residence Entrance	+	1.1 fc	4.6 fc	0.2 fc	23.0:1	5.5:1
Building Sidewalks	+	3.2 fc	33.6 fc	0.1 fc	336.0:1	32.0:1

1 PHOTOMETRIC STUDY
E02 N.T.S.