

**LEGEND**

- 0.24 ha AREA (hectares)
- A-01 AREA ID
- 0.65 RUN-OFF COEFFICIENT
- PROPOSED STORM DRAINAGE AREA BOUNDARY
- PROPOSED STORM MANHOLE / SEWER AND FLOW DIRECTION
- ROAD CATCH BASIN
- ROAD CATCH BASIN WITH ICD
- LANDSCAPE CATCH BASIN
- REAR YARD CATCH BASIN
- REAR YARD CATCH BASIN WITH ICD
- MAJOR SYSTEM FLOW ROUTE
- MAX STATIC PONDING LIMITS
- 100-YR PONDING LIMITS
- 100-YR +20% PONDING LIMITS

CB ID	T/G ELEVATION	INVERT	I.C.D.
CB01	77.83	76.24 76.30	-
CB02	77.73	76.33 76.33	TEMPEST MHF 77mm
CB03	77.83	76.13 76.13	TEMPEST LMF VORTEX 93
TD1	75.78	74.93	-

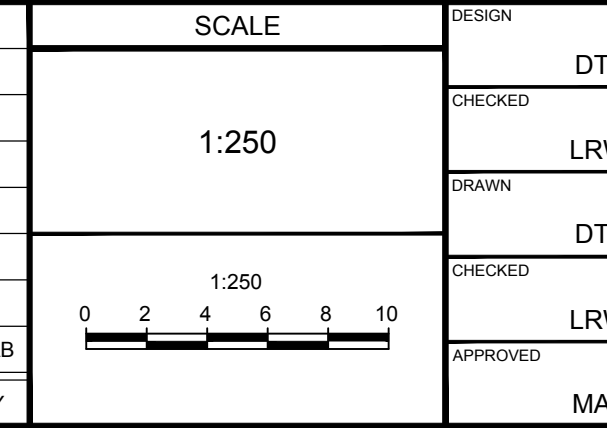
RYCB No.	T/G ELEVATION	INVERT	I.C.D.
LC1	77.67	76.67	-
LC2	77.15	76.15	-
LC3	78.00	76.56	-
LC4	77.73	76.42	-
RY1	77.40	75.91	-
RY2	77.96	75.24	TEMPEST MHF 52mm
RY3	77.15	75.45	-

MANHOLE ID	SIZE (mm)	T/G ELEV (m)	INVERT (m)	PIPE DIAMETER (mm)	I.C.D.
2	12000	78.09	SE=74.50 NW=74.63	SE=375 NW=250	-
4	12000	78.10	SE=74.28 NW=74.33 SW=74.74	SE=450 NW=375 SW=300	-
8	12000	77.83	NW=73.97 NE=72.16	NW=450 NE=450	-

PONDING ID	STRUCTURE	100 YEAR PONDING ELEVATION	100 YEAR PONDING DEPTH (m)	100 YEAR + 20% PONDING ELEVATION	100 YEAR + 20% PONDING DEPTH (m)	MAX STATIC PONDING ELEVATION	MAX STATIC PONDING DEPTH (m)
P1	CB01	78.06	0.23	78.10	0.27	78.13	0.30
P2	CB02	77.94	0.21	77.97	0.24	78.03	0.30
P3	CB03	78.06	0.23	78.09	0.26	78.13	0.30
P4	LC01	77.34	0.00	77.37	0.00	77.80	0.13
P5	LC02	77.34	0.19	77.37	0.22	77.35	0.20
P6	LC03	78.14	0.14	78.18	0.18	78.30	0.30
P7	LC04	77.95	0.22	77.97	0.24	78.03	0.30
P8	RY03	77.34	0.19	77.36	0.21	77.35	0.20

NOTE:  
THE POSITION OF ALL POLE LINES, CONDUITS, WATERMANS, SEWERS AND OTHER UNDERGROUND AND OVERGROUND UTILITIES AND STRUCTURES IS NOT NECESSARILY SHOWN ON THE CONTRACT DRAWINGS, AND WHERE SHOWN, THE ACCURACY OF THE POSITION OF SUCH UTILITIES AND STRUCTURES IS NOT GUARANTEED. BEFORE STARTING WORK, DETERMINE THE EXACT LOCATION OF ALL SUCH UTILITIES AND STRUCTURES AND ASSUME ALL LIABILITY FOR DAMAGE TO THEM.

No.	REVISION	DATE	BY
1.	ISSUED FOR APPROVAL	MAY 17/21	MAB



FOR REVIEW ONLY

PREPARED BY: DTD

CHECKED BY: LRW

DRAWN BY: DTD

CHECKED BY: LRW

APPROVED BY: MAB

**NOVATECH**  
Engineers, Planners & Landscape Architects  
Suite 200, 240 Michael Cowpland Drive  
Ottawa, Ontario, Canada K2M 1P6  
Telephone: (613) 254-9643  
Facsimile: (613) 254-5867  
Website: www.novatech-eng.com

CITY OF OTTAWA  
KLONDIKE RIDGE - BLOCK 10

STORM DRAINAGE AREA PLAN

PROJECT No.: 117034-10  
REV # 1  
DRAWING No.: 17034-10-STM