

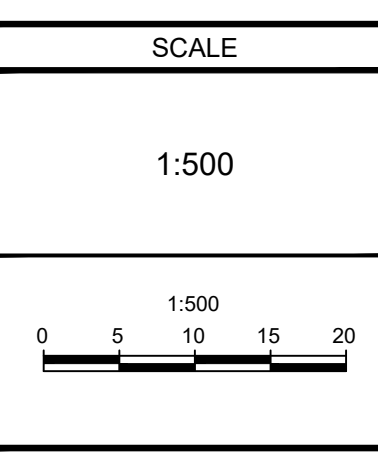
- LEGEND**
- SITE BOUNDARY
 - AREA ID
 - MANHOLE TO MANHOLE
 - POPULATION EQUIVALENT
 - AREA IN HECTARES
 - SANITARY DRAINAGE AREA BOUNDARY
 - PROPOSED SANITARY SEWER AND MANHOLE WITH DIRECTION OF FLOW
 - EXISTING SANITARY SEWER AND MANHOLE WITH DIRECTION OF FLOW
 - ▨ PART OF FUTURE PH 2 OUTLETTING THROUGH PH. 1A AT OUTLET 1
 - ▨ PART OF FUTURE ST. PAUL LANDS (NOT PART OF APPLICATION) OUTLETTING THROUGH PH. 1A AT OUTLET 1
 - ▨ PART OF FUTURE PHASES OUTLETTING THROUGH PHASE 2 OUTLET 2
 - ▨ PROPOSED CONCRETE SIDEWALK

REFER TO DRAWING NO. 114025-SAN2

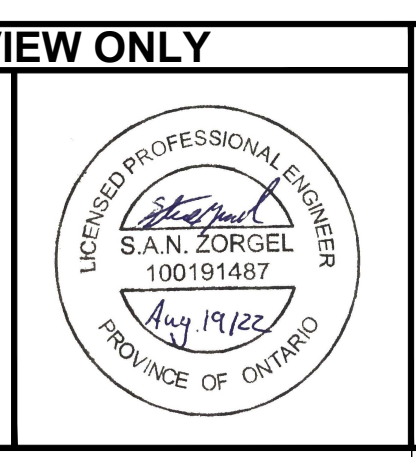
REFER TO DRAWING No. 114025-SAN2

NOTE:
 THE POSITION OF ALL POLE LINES, CONDUITS, WATERMANS, SEWERS AND OTHER UNDERGROUND AND OVERGROUND UTILITIES AND STRUCTURES IS NOT NECESSARILY SHOWN ON THE CONTRACT DRAWINGS, AND WHERE SHOWN, THE ACCURACY OF THE POSITION OF SUCH UTILITIES AND STRUCTURES IS NOT GUARANTEED. BEFORE STARTING WORK, DETERMINE THE EXACT LOCATION OF ALL SUCH UTILITIES AND STRUCTURES AND ASSUME ALL LIABILITY FOR DAMAGE TO THEM.

No.	REVISION	DATE	BY
7.	REVISED AS PER CITY OF OTTAWA COMMENTS	AUG 19/22	SAZ
6.	REVISED AS PER CITY OF OTTAWA COMMENTS	JUN 3/22	SAZ
5.	ISSUED FOR CONSTRUCTION	JULY 7/16	JAG
4.	REVISED AS PER CITY COMMENTS & ISSUED FOR E.C.A.	MAY 24/16	JAG
3.	ISSUED FOR TENDER	APR 20/16	JAG
2.	REVISED AS PER CITY COMMENTS	APR 13/16	JAG
1.	ISSUED FOR CITY OF OTTAWA REVIEW	DEC 18/15	JAG



DESIGN	SAZ
CHECKED	MSP
DRAWN	MTM
CHECKED	SAZ
APPROVED	MSP

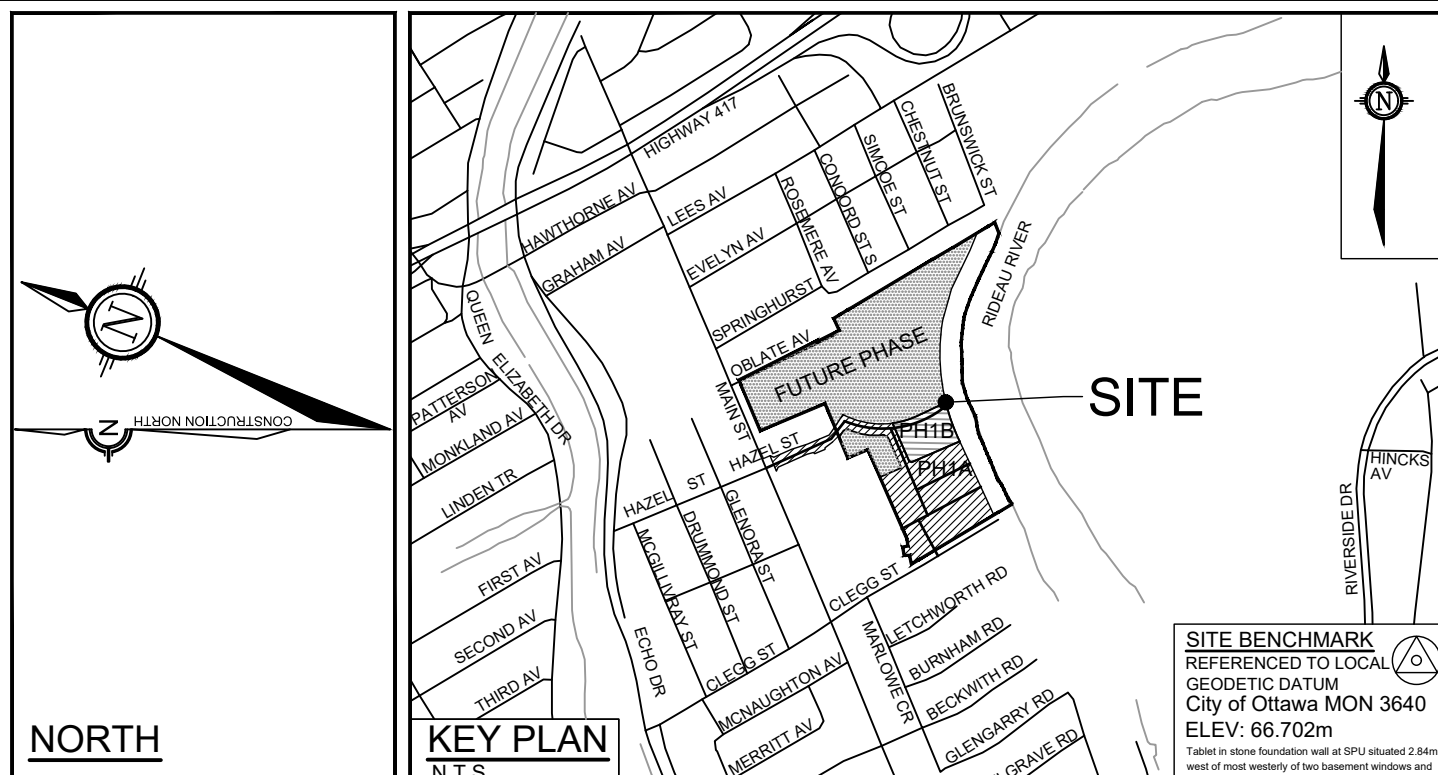


NOVATECH
 Engineers, Planners & Landscape Architects
 Suite 200, 240 Michael Comptand Drive
 Ottawa, Ontario, Canada K2M 1P6
 Telephone: (613) 254-9643
 Facsimile: (613) 254-5867
 Website: www.novatech-eng.com

CITY OF OTTAWA
 GREYSTONE VILLAGE
 175 MAIN STREET

DRAWING NAME
**SANITARY DRAINAGE AREAS PLAN
 PHASE 1A AND 1B**

PROJECT No. 114025-00
 REV # 7
 DRAWING No. 114025-SAN1

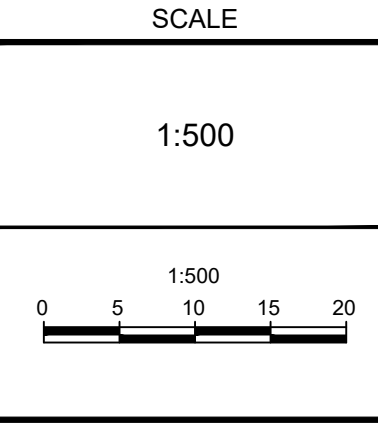


- LEGEND**
- SITE BOUNDARY
 - AREA ID
 - MANHOLE TO MANHOLE
 - POPULATION EQUIVALENT
 - AREA IN HECTARES
 - SANITARY DRAINAGE AREA BOUNDARY
 - PROPOSED SANITARY SEWER AND MANHOLE WITH DIRECTION OF FLOW
 - EXISTING SANITARY SEWER AND MANHOLE WITH DIRECTION OF FLOW
 - PART OF FUTURE PH 2 OUTLETTING THROUGH PH 1A AT OUTLET 1
 - PART OF FUTURE ST. PAUL LANS (NOT PART OF APPLICATION) OUTLETTING THROUGH PH 1A AT OUTLET 1
 - PART OF FUTURE PHASES OUTLETTING THROUGH PHASE 2 OUTLET 2
 - PROPOSED CONCRETE SIDEWALK

REFER TO DRAWING No. 114025-SAN1

NOTE:
 THE POSITION OF ALL POLE LINES, CONDUITS, WATERMANS, SEWERS AND OTHER UNDERGROUND AND OVERGROUND UTILITIES AND STRUCTURES IS NOT NECESSARILY SHOWN ON THE CONTRACT DRAWINGS, AND WHERE SHOWN, THE ACCURACY OF THE POSITION OF SUCH UTILITIES AND STRUCTURES IS NOT GUARANTEED. BEFORE STARTING WORK, DETERMINE THE EXACT LOCATION OF ALL SUCH UTILITIES AND STRUCTURES AND ASSUME ALL LIABILITY FOR DAMAGE TO THEM.

No.	REVISION	DATE	BY
7.	REVISED AS PER CITY OF OTTAWA COMMENTS	AUG 19/22	SAZ
6.	REVISED AS PER CITY OF OTTAWA COMMENTS	JUN 3/22	SAZ
5.	ISSUED FOR CONSTRUCTION	JULY 7/16	JAG
4.	REVISED AS PER CITY COMMENTS & ISSUED FOR E.C.A.	MAY 24/16	JAG
3.	ISSUED FOR TENDER	APR 20/16	JAG
2.	REVISED AS PER CITY COMMENTS	APR 13/16	JAG
1.	ISSUED FOR CITY OF OTTAWA REVIEW	DEC 18/15	JAG



DESIGN	FOR REVIEW ONLY
CHECKED: SAZ	
DRAWN: MSP	
CHECKED: MTM	
APPROVED: SAZ	
	MSP



NOVATECH
 Engineers, Planners & Landscape Architects
 Suite 200, 240 Michael Cowpland Drive
 Ottawa, Ontario, Canada K2M 1P6
 Telephone: (613) 254-9643
 Facsimile: (613) 254-5867
 Website: www.novatech-eng.com

CITY OF OTTAWA
 GREYSTONE VILLAGE
 175 MAIN STREET

DRAWING NAME
**SANITARY DRAINAGE AREAS PLAN
 PHASE 1A AND 1B**

PROJECT No. 114025-00
 REV # 6
 DRAWING No. 114025-SAN2