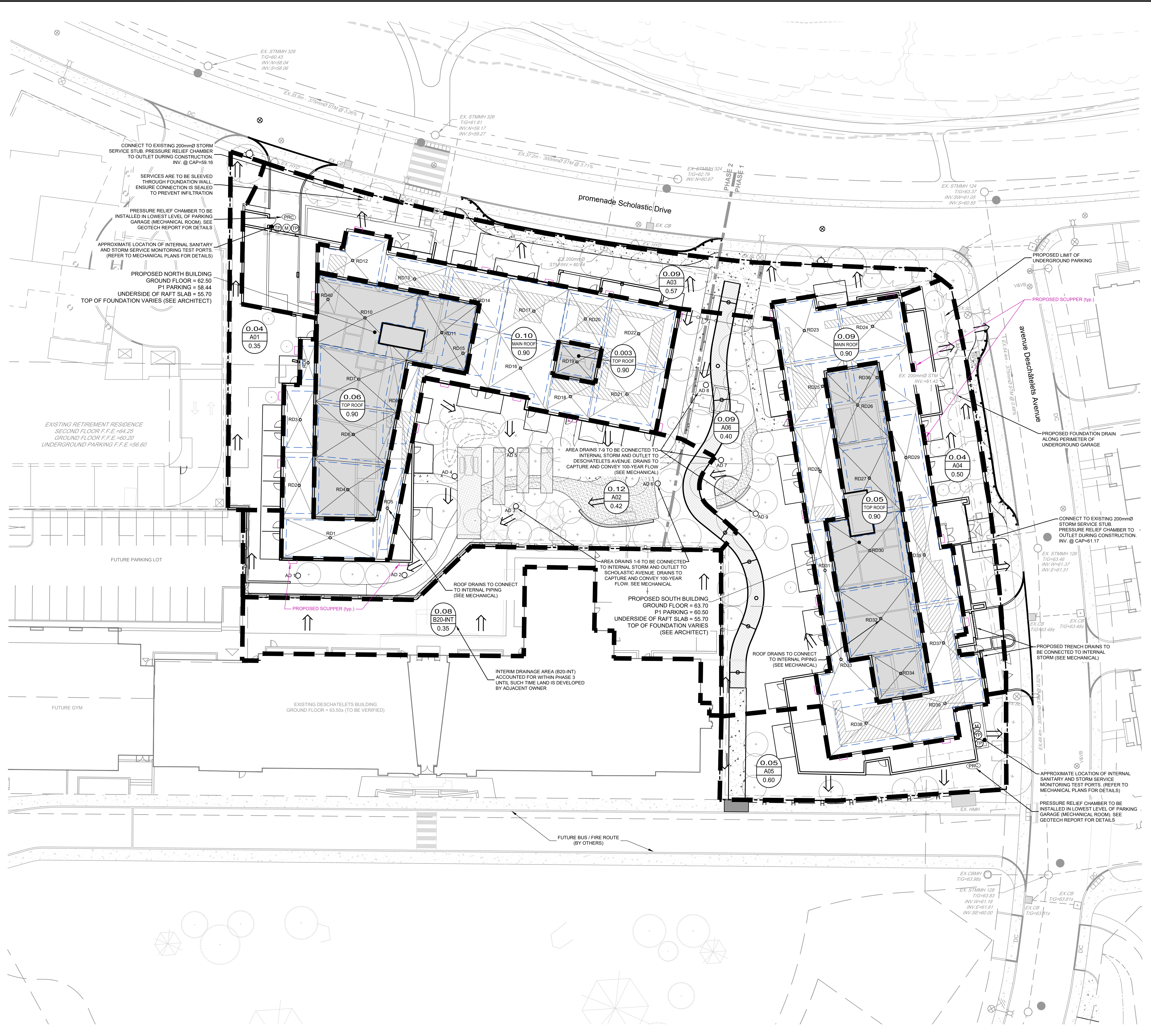


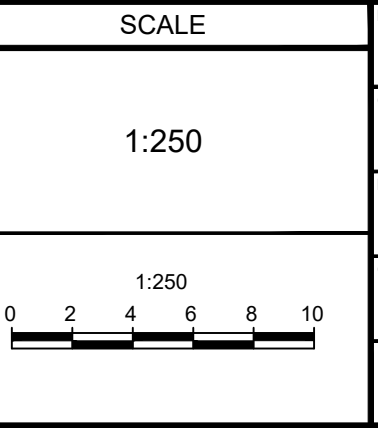
PHASE 3 CONDOS - ROOF DRAIN TABLE									
AREA ID	ZURN SPECIFICATION	NOTCHES	POST DEVELOPMENT ZURN ROOF DRAIN CONTROL PARAMETERS						
			15-YEAR EVENT	100-YEAR EVENT	1-YEAR EVENT	100-YEAR EVENT			
			HEAD(D)	Q(D)	HEAD(D)	Q(D)			
<b>NORTH BUILDING</b>									
RD1	ZCF121-1W-X4-2-105-10-77	1	0.105	0.39	1.41	0.139	0.51	3.13	
RD2	ZCF121-1W-X4-2-105-10-77	1	0.095	0.36	0.87	0.127	0.48	1.35	
RD3	ZCF121-1W-X4-2-105-10-77	1	0.096	0.36	0.58	0.128	0.48	1.37	
RD4	ZCF121-1W-X4-2-105-10-77	1	0.107	0.40	1.53	0.139	0.52	3.39	
RD5	ZCF121-1W-X4-2-105-10-77	1	0.096	0.36	0.48	0.122	0.46	1.17	
RD6	ZCF121-1W-X4-2-105-10-77	1	0.107	0.40	1.79	0.139	0.52	3.87	
RD7	ZCF121-1W-X4-2-105-10-77	1	0.108	0.40	2.07	0.141	0.52	4.52	
RD8	ZCF121-1W-X4-2-105-10-77	1	0.077	0.29	0.10	0.108	0.40	0.27	
RD9	ZCF121-1W-X4-2-105-10-77	1	0.082	0.30	0.52	0.108	0.40	1.21	
RD10	ZCF121-1W-X4-2-105-10-77	1	0.115	0.43	3.09	0.149	0.56	6.60	
RD11	ZCF121-1W-X4-2-105-10-77	1	0.112	0.42	1.77	0.146	0.54	3.92	
RD12	ZCF121-1W-X4-2-105-10-77	1	0.101	0.38	0.87	0.133	0.50	2.00	
RD13	ZCF121-1W-X4-2-105-10-77	1	0.096	0.36	0.58	0.134	0.50	1.36	
RD14	ZCF121-1W-X4-2-105-10-77	1	0.096	0.36	0.81	0.127	0.47	1.87	
RD15	ZCF121-1W-X4-2-105-10-77	1	0.079	0.29	0.58	0.103	0.39	1.32	
RD16	ZCF121-1W-X4-2-105-10-77	1	0.104	0.39	1.34	0.135	0.51	2.99	
RD17	ZCF121-1W-X4-2-105-10-77	1	0.113	0.42	1.19	0.148	0.55	2.69	
RD18	ZCF121-1W-X4-2-105-10-77	1	0.103	0.39	0.34	0.140	0.53	0.85	
RD19	ZCF121-1W-X4-2-105-10-77	1	0.094	0.35	0.35	0.126	0.47	0.85	
RD20	ZCF121-1W-X4-2-105-10-77	2	0.096	0.71	0.41	0.131	0.97	1.05	
RD21	ZCF121-1W-X4-2-105-10-77	2	0.106	0.79	1.16	0.131	0.97	2.72	
RD22	ZCF121-1W-X4-2-105-10-77	2	0.104	0.78	1.18	0.141	1.05	2.74	
RD40	ZCF121-1W-X4-2-105-10-77	1	0.000	0.00	0.00	0.000	0.00	0.00	
SUBTOTAL									
<b>SOUTH BUILDING</b>									
RD23	ZCF121-1W-X4-2-105-10-77	1	0.108	0.40	1.40	0.141	0.53	3.11	
RD24	ZCF121-1W-X4-2-105-10-77	1	0.107	0.40	1.09	0.140	0.52	2.47	
RD25	ZCF121-1W-X4-2-105-10-77	1	0.100	0.37	0.91	0.132	0.49	2.06	
RD26	ZCF121-1W-X4-2-105-10-77	1	0.108	0.40	1.63	0.141	0.52	3.62	
RD27	ZCF121-1W-X4-2-105-10-77	1	0.111	0.41	1.50	0.127	0.47	3.33	
RD28	ZCF121-1W-X4-2-105-10-77	1	0.108	0.40	1.51	0.141	0.53	3.35	
RD29	ZCF121-1W-X4-2-105-10-77	1	0.097	0.36	1.13	0.127	0.47	2.54	
RD30	ZCF121-1W-X4-2-105-10-77	1	0.114	0.42	2.34	0.148	0.55	5.09	
RD31	ZCF121-1W-X4-2-105-10-77	1	0.095	0.35	0.47	0.126	0.47	1.11	
RD32	ZCF121-1W-X4-2-105-10-77	1	0.110	0.41	2.31	0.143	0.53	5.06	
RD33	ZCF121-1W-X4-2-105-10-77	1	0.101	0.38	0.90	0.132	0.49	2.06	
RD34	ZCF121-1W-X4-2-105-10-77	1	0.101	0.38	0.83	0.133	0.50	1.89	
RD35	ZCF121-1W-X4-2-105-10-77	2	0.108	0.81	1.18	0.144	1.07	2.78	
RD36	ZCF121-1W-X4-2-105-10-77	1	0.085	0.32	0.77	0.112	0.42	1.75	
RD37	ZCF121-1W-X4-2-105-10-77	2	0.103	0.77	0.58	0.138	1.03	2.62	
RD38	ZCF121-1W-X4-2-105-10-77	2	0.114	0.85	1.19	0.108	0.80	1.00	
RD39	ZCF121-1W-X4-2-105-10-77	2	0.109	0.81	0.83	0.146	1.09	2.90	
SUBTOTAL									
TOTAL			17.56	43.23			22.79	97.10	



NOTE:  
 THE POSITION OF ALL POLE LINES, CONDUITS,  
 WATERMANS, SEWERS AND OTHER  
 UNDERGROUND AND OVERGROUND UTILITIES AND  
 STRUCTURES IS NOT NECESSARILY SHOWN ON  
 THE CONTRACT DRAWINGS, AND WHERE SHOWN,  
 THE ACCURACY OF THE POSITION OF SUCH  
 UTILITIES AND STRUCTURES IS NOT GUARANTEED.  
 BEFORE STARTING WORK, DETERMINE THE EXACT  
 LOCATION OF ALL SUCH UTILITIES AND  
 STRUCTURES AND ASSUME ALL LIABILITY FOR  
 DAMAGE TO THEM.

**PRELIMINARY  
 NOT FOR  
 CONSTRUCTION**

No.	REVISION	DATE	BY
6	REVISED AS PER CITY OF OTTAWA COMMENTS	JAN 2023	SAZ
5	REVISED AS PER CITY OF OTTAWA COMMENTS	NOV 24/22	SAZ
4	REVISED AS PER CITY OF OTTAWA COMMENTS	AUG 19/22	SAZ
3	ISSUED FOR COORDINATION	AUG 10/22	SAZ
2	REVISED AS PER CITY OF OTTAWA COMMENTS	JUN 3/22	SAZ
1	ISSUED WITH SITE PLAN APPLICATION	JUL 22/21	JAG



FOR REVIEW ONLY

SAZ  
 MSP  
 MTM  
 SAZ  
 MSP

PROFESSIONAL ENGINEER  
 S.A.N. ZORZEL  
 100191487  
 2015  
 PROVINCE OF ONTARIO

**NOVATECH**  
 Engineers, Planners & Landscape Architects  
 Suite 200, 240 Michael Cowland Drive  
 Ottawa, Ontario, Canada K2M 1P6  
 Telephone: (613) 254-9643  
 Facsimile: (613) 254-5867  
 Website: www.novatech-eng.com

CITY OF OTTAWA  
 375 DESCHATELETS AVENUE  
 GREYSTONE VILLAGE PHASE 3  
 DRAWING NAME  
**STORMWATER MANAGEMENT PLAN**

PROJECT NO: 114025-PH3  
 REV: REV # 6  
 DRAWING NO: 114025-STM(PH3)  
 #17640

114025-STM(PH3) - Stormwater Management Plan - Phase 3 - 2023-01-17 10:00am