

**LEGEND**

- SITE BOUNDARY
- AREA ID
- MANHOLE TO MANHOLE
- POPULATION EQUIVALENT
- AREA IN HECTARES
- SANITARY DRAINAGE AREA BOUNDARY
- PROPOSED SANITARY SEWER AND MANHOLE WITH DIRECTION OF FLOW
- EXISTING SANITARY SEWER AND MANHOLE WITH DIRECTION OF FLOW
- PART OF FUTURE PH 2 OUTLETTING THROUGH PH 1A AT OUTLET 1
- PART OF FUTURE ST. PAUL LANDS (NOT PART OF APPLICATION) OUTLETTING THROUGH PH 1A AT OUTLET 1
- PART OF FUTURE PHASES OUTLETTING THROUGH PHASE 2 OUTLET 2
- PROPOSED CONCRETE SIDEWALK

REFER TO DRAWING No. 114025-SAN2

REFER TO DRAWING No. 114025-SAN2

NOTE:  
THE POSITION OF ALL POLE LINES, CONDUITS, WATERMANS, SEWERS AND OTHER UNDERGROUND AND OVERGROUND UTILITIES AND STRUCTURES IS NOT NECESSARILY SHOWN ON THE CONTRACT DRAWINGS, AND WHERE SHOWN, THE ACCURACY OF THE POSITION OF SUCH UTILITIES AND STRUCTURES IS NOT GUARANTEED. BEFORE STARTING WORK, DETERMINE THE EXACT LOCATION OF ALL SUCH UTILITIES AND STRUCTURES AND ASSUME ALL LIABILITY FOR DAMAGE TO THEM.

| No. | REVISION   | DATE      | BY  | No. | REVISION   | DATE      | BY  |
|-----|--|-----------|-----|-----|--|-----------|-----|
| 9   | REVISED AS PER CITY OF OTTAWA COMMENTS           | JAN 2023  | SAZ | 1   | ISSUED FOR CITY OF OTTAWA REVIEW                 | DEC 18/15 | JAG |
| 8   | REVISED AS PER CITY OF OTTAWA COMMENTS           | NOV 24/22 | SAZ | 2   | REVISED AS PER CITY COMMENTS                     | APR 13/16 | JAG |
| 7   | REVISED AS PER CITY OF OTTAWA COMMENTS           | AUG 19/22 | SAZ | 3   | ISSUED FOR TENDER                                | APR 20/16 | JAG |
| 6   | REVISED AS PER CITY OF OTTAWA COMMENTS           | JUN 3/22  | SAZ | 4   | REVISED AS PER CITY COMMENTS & ISSUED FOR E.C.A. | MAY 24/16 | JAG |
| 5   | ISSUED FOR CONSTRUCTION                          | JULY 7/16 | JAG | 5   | ISSUED FOR CONSTRUCTION                          | JULY 7/16 | JAG |
| 4   | REVISED AS PER CITY COMMENTS & ISSUED FOR E.C.A. | MAY 24/16 | JAG | 6   | REVISED AS PER CITY OF OTTAWA COMMENTS           | JUN 3/22  | SAZ |
| 3   | ISSUED FOR TENDER                                | APR 20/16 | JAG | 7   | REVISED AS PER CITY OF OTTAWA COMMENTS           | AUG 19/22 | SAZ |
| 2   | REVISED AS PER CITY COMMENTS                     | APR 13/16 | JAG | 8   | REVISED AS PER CITY OF OTTAWA COMMENTS           | NOV 24/22 | SAZ |
| 1   | ISSUED FOR CITY OF OTTAWA REVIEW                 | DEC 18/15 | JAG | 9   | REVISED AS PER CITY OF OTTAWA COMMENTS           | JAN 2023  | SAZ |

| DESIGN   | SAZ |
|----------|-----|
| CHECKED  | SAZ |
| DRAWN    | MSP |
| CHECKED  | MTM |
| APPROVED | SAZ |
|          | MSP |

SCALE

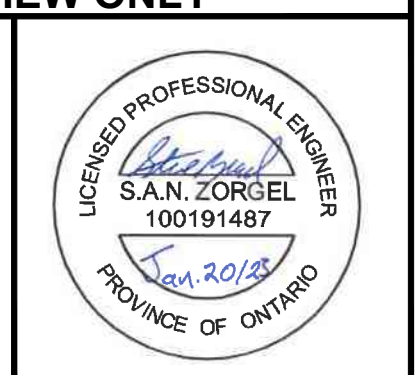
1:500

**FOR REVIEW ONLY**

CITY OF OTTAWA

GREYSTONE VILLAGE

175 MAIN STREET



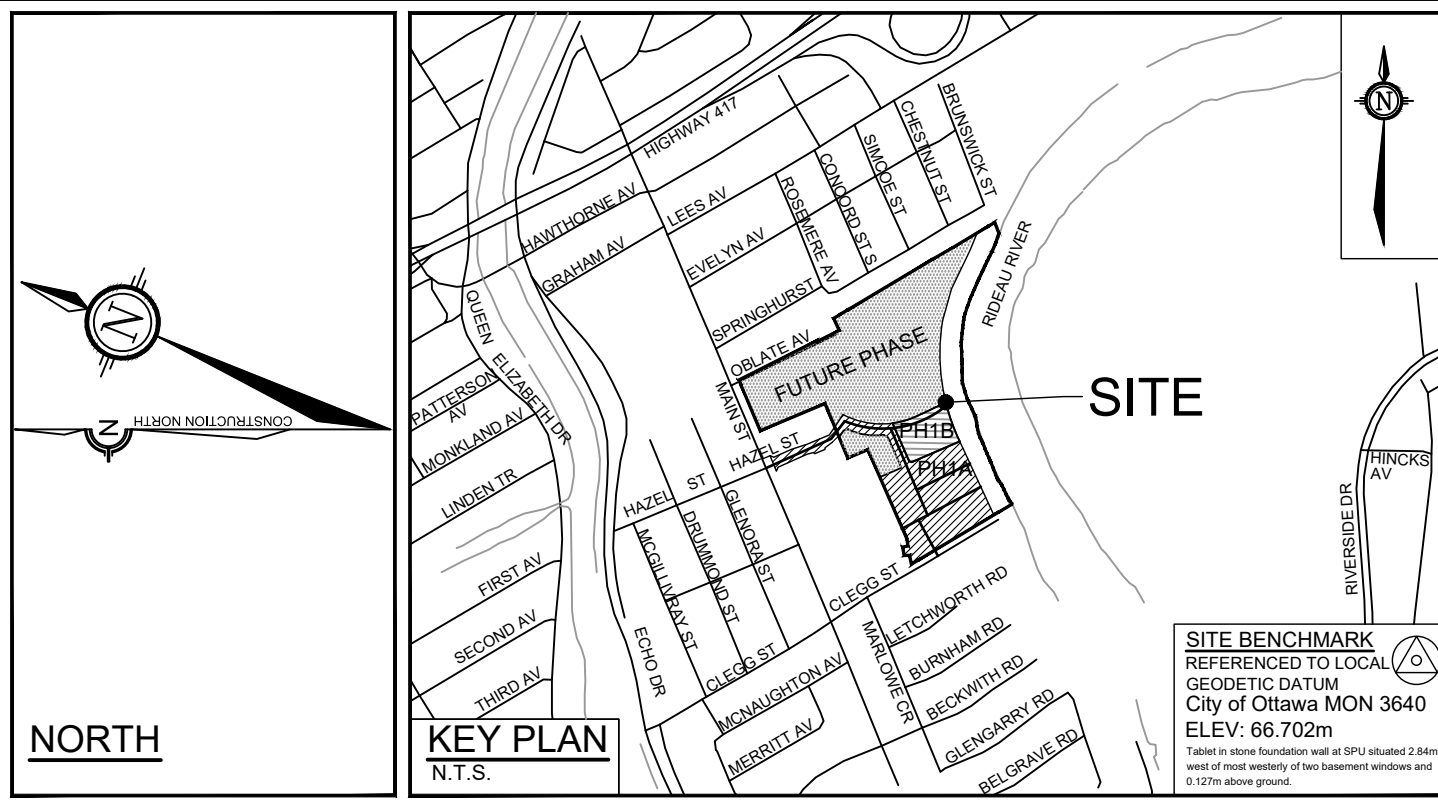
**NOVATECH**

Engineers, Planners & Landscape Architects

Suite 200, 240 Michalewicz Court  
Ottawa, Ontario, Canada K2M 1P6

Telephone: (613) 254-9643  
Facsimile: (613) 254-5867  
Website: www.novatech-eng.com

|  |              |             |           |
|--|--------------|-------------|-----------|
| CITY OF OTTAWA<br>GREYSTONE VILLAGE<br>175 MAIN STREET | DRAWING NAME | PROJECT No. | 114025-00 |
| SANITARY DRAINAGE AREAS PLAN<br>PHASE 1A AND 1B        | REV #        | REV # 9     |           |
|  | DRAWING No.  | 114025-SAN1 |           |



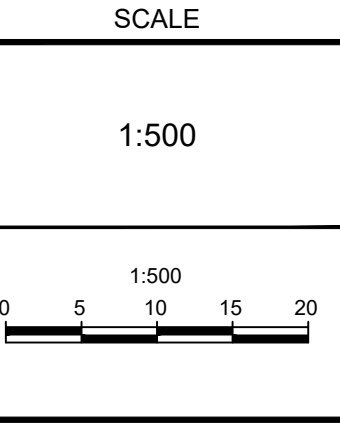
- LEGEND**
- SITE BOUNDARY
  - AREA ID
  - MANHOLE TO MANHOLE
  - POPULATION EQUIVALENT
  - AREA IN HECTARES
  - SANITARY DRAINAGE AREA BOUNDARY
  - PROPOSED SANITARY SEWER AND MANHOLE WITH DIRECTION OF FLOW
  - EXISTING SANITARY SEWER AND MANHOLE WITH DIRECTION OF FLOW
  - PART OF FUTURE PH 2 OUTLETTING THROUGH PH 1A AT OUTLET 1
  - PART OF FUTURE ST. PAUL LANDS (NOT PART OF APPLICATION) OUTLETTING THROUGH PH 1A AT OUTLET 1
  - PART OF FUTURE PHASES OUTLETTING THROUGH PHASE 2 OUTLET 2
  - PROPOSED CONCRETE SIDEWALK

REFER TO DRAWING No. 114025-SAN1

**NOTE:**  
 THE POSITION OF ALL POLE LINES, CONDUITS, WATERMANS, SEWERS AND OTHER UNDERGROUND AND OVERGROUND UTILITIES AND STRUCTURES IS NOT NECESSARILY SHOWN ON THE CONTRACT DRAWINGS, AND WHERE SHOWN, THE ACCURACY OF THE POSITION OF SUCH UTILITIES AND STRUCTURES IS NOT GUARANTEED. BEFORE STARTING WORK, DETERMINE THE EXACT LOCATION OF ALL SUCH UTILITIES AND STRUCTURES AND ASSUME ALL LIABILITY FOR DAMAGE TO THEM.

| No. | REVISION                               | DATE     | BY  |
|-----|--|----------|-----|
| 9   | REVISED AS PER CITY OF OTTAWA COMMENTS | JAN 2023 | SAZ |

| No. | REVISION   | DATE      | BY  |
|-----|--|-----------|-----|
| 8   | REVISED AS PER CITY OF OTTAWA COMMENTS           | NOV 24/22 | SAZ |
| 7   | REVISED AS PER CITY OF OTTAWA COMMENTS           | AUG 19/22 | SAZ |
| 6   | REVISED AS PER CITY OF OTTAWA COMMENTS           | JUN 3/22  | SAZ |
| 5   | ISSUED FOR CONSTRUCTION                          | JULY 7/16 | JAG |
| 4   | REVISED AS PER CITY COMMENTS & ISSUED FOR E.C.A. | MAY 24/16 | JAG |
| 3   | ISSUED FOR TENDER                                | APR 20/16 | JAG |
| 2   | REVISED AS PER CITY COMMENTS                     | APR 13/16 | JAG |
| 1   | ISSUED FOR CITY OF OTTAWA REVIEW                 | DEC 18/15 | JAG |



| DESIGN   | SAZ |
|----------|-----|
| CHECKED  | MSP |
| DRAWN    | MTM |
| CHECKED  | SAZ |
| APPROVED | MSP |



**NOVATECH**  
 Engineers, Planners & Landscape Architects  
 Suite 200, 240 Michael Cowpland Drive  
 Ottawa, Ontario, Canada K2M 1P6  
 Telephone: (613) 254-9643  
 Facsimile: (613) 254-5867  
 Website: www.novatech-eng.com

CITY OF OTTAWA  
 GREYSTONE VILLAGE  
 175 MAIN STREET

DRAWING NAME  
**SANITARY DRAINAGE AREAS PLAN  
 PHASE 1A AND 1B**

PROJECT No. 114025-00  
 REV # 9  
 DRAWING No. 114025-SAN2