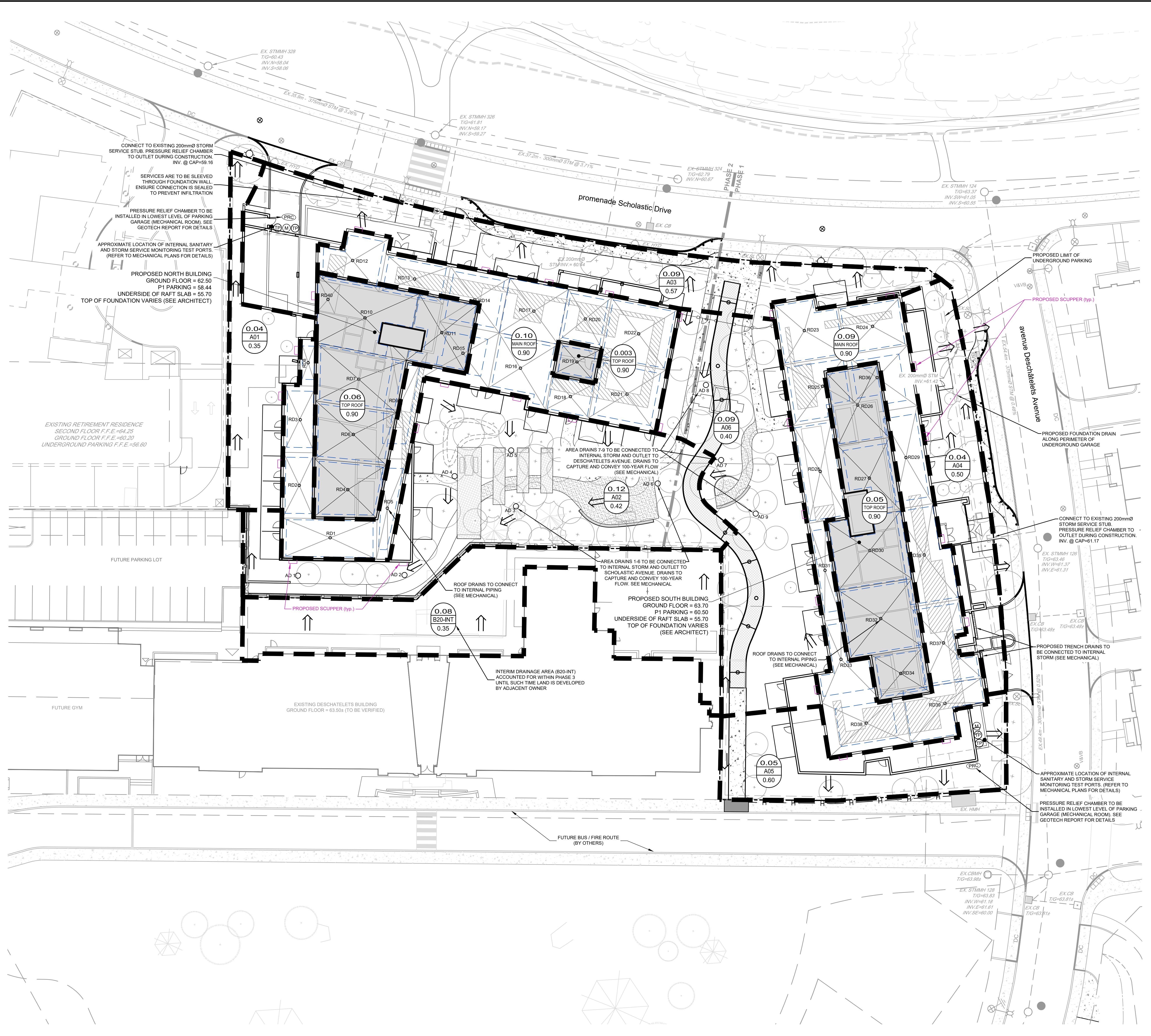


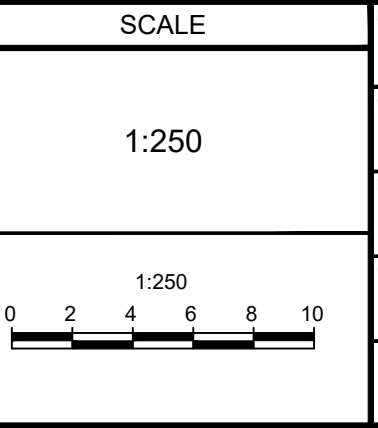
PHASE 3 CONDOS - ROOF DRAIN TABLE									
AREA ID	ZURN SPECIFICATION	NOTCHES	POST DEVELOPMENT ZURN ROOF DRAIN CONTROL PARAMETERS						
			15-YEAR EVENT		100-YEAR EVENT		100-YEAR EVENT		
			HEAD(D)	Q(D)	VOL(D) ³	HEAD(M)	Q(M)	VOL(M) ³	
NORTH BUILDING									
RD1	ZCF121-1W-X4-2-105-10-77	1	0.105	0.39	1.41	0.139	0.51	3.13	
RD2	ZCF121-1W-X4-2-105-10-77	1	0.095	0.36	1.27	0.57	1.27	1.35	
RD3	ZCF121-1W-X4-2-105-10-77	1	0.096	0.36	0.58	0.128	0.48	1.37	
RD4	ZCF121-1W-X4-2-105-10-77	1	0.107	0.40	1.53	0.139	0.52	3.39	
RD5	ZCF121-1W-X4-2-105-10-77	1	0.096	0.36	0.48	0.122	0.46	1.17	
RD6	ZCF121-1W-X4-2-105-10-77	1	0.107	0.40	1.79	0.139	0.52	3.87	
RD7	ZCF121-1W-X4-2-105-10-77	1	0.108	0.40	2.07	0.141	0.52	4.52	
RD8	ZCF121-1W-X4-2-105-10-77	1	0.077	0.29	0.10	0.108	0.40	0.27	
RD9	ZCF121-1W-X4-2-105-10-77	1	0.082	0.30	0.52	0.108	0.40	1.21	
RD10	ZCF121-1W-X4-2-105-10-77	1	0.115	0.43	3.09	0.149	0.56	6.60	
RD11	ZCF121-1W-X4-2-105-10-77	1	0.112	0.42	1.77	0.146	0.54	3.92	
RD12	ZCF121-1W-X4-2-105-10-77	1	0.101	0.38	0.87	0.133	0.50	2.00	
RD13	ZCF121-1W-X4-2-105-10-77	1	0.096	0.36	0.58	0.134	0.50	1.36	
RD14	ZCF121-1W-X4-2-105-10-77	1	0.096	0.36	0.81	0.127	0.47	1.87	
RD15	ZCF121-1W-X4-2-105-10-77	1	0.079	0.29	0.58	0.103	0.39	1.32	
RD16	ZCF121-1W-X4-2-105-10-77	1	0.104	0.39	1.34	0.135	0.51	2.99	
RD17	ZCF121-1W-X4-2-105-10-77	1	0.113	0.42	1.19	0.148	0.55	2.69	
RD18	ZCF121-1W-X4-2-105-10-77	1	0.103	0.39	0.34	0.140	0.53	0.85	
RD19	ZCF121-1W-X4-2-105-10-77	1	0.094	0.35	0.35	0.126	0.47	0.85	
RD20	ZCF121-1W-X4-2-105-10-77	2	0.096	0.71	0.41	0.131	0.97	1.05	
RD21	ZCF121-1W-X4-2-105-10-77	2	0.106	0.79	1.16	0.131	0.97	2.72	
RD22	ZCF121-1W-X4-2-105-10-77	2	0.104	0.78	1.18	0.141	1.05	2.74	
RD40	ZCF121-1W-X4-2-105-10-77	1	0.000	0.00	0.00	0.000	0.00	0.00	
SUBTOTAL					0.31		22.65	12.29	51.25
SOUTH BUILDING									
RD23	ZCF121-1W-X4-2-105-10-77	1	0.108	0.40	1.40	0.141	0.53	3.11	
RD24	ZCF121-1W-X4-2-105-10-77	1	0.107	0.40	1.09	0.140	0.52	2.47	
RD25	ZCF121-1W-X4-2-105-10-77	1	0.100	0.37	0.91	0.132	0.49	2.06	
RD26	ZCF121-1W-X4-2-105-10-77	1	0.108	0.40	1.63	0.141	0.52	3.62	
RD27	ZCF121-1W-X4-2-105-10-77	1	0.111	0.41	1.50	0.127	0.47	3.33	
RD28	ZCF121-1W-X4-2-105-10-77	1	0.108	0.40	1.51	0.141	0.53	3.35	
RD29	ZCF121-1W-X4-2-105-10-77	1	0.097	0.36	1.13	0.127	0.47	2.54	
RD30	ZCF121-1W-X4-2-105-10-77	1	0.114	0.42	2.34	0.148	0.55	5.09	
RD31	ZCF121-1W-X4-2-105-10-77	1	0.095	0.35	0.47	0.126	0.47	1.11	
RD32	ZCF121-1W-X4-2-105-10-77	1	0.110	0.41	2.31	0.143	0.53	5.06	
RD33	ZCF121-1W-X4-2-105-10-77	1	0.101	0.38	0.90	0.132	0.49	2.06	
RD34	ZCF121-1W-X4-2-105-10-77	1	0.101	0.38	0.83	0.133	0.50	1.89	
RD35	ZCF121-1W-X4-2-105-10-77	2	0.108	0.81	1.18	0.144	1.07	2.78	
RD36	ZCF121-1W-X4-2-105-10-77	1	0.085	0.32	0.77	0.112	0.42	1.75	
RD37	ZCF121-1W-X4-2-105-10-77	2	0.103	0.77	0.58	0.138	1.03	2.62	
RD38	ZCF121-1W-X4-2-105-10-77	2	0.114	0.85	1.19	0.108	0.80	1.00	
RD39	ZCF121-1W-X4-2-105-10-77	2	0.109	0.81	0.83	0.146	1.09	2.00	
SUBTOTAL					8.25	20.58	10.49	45.85	
TOTAL					17.56	43.23	22.79	97.10	



NOTE:
 THE POSITION OF ALL POLE LINES, CONDUITS,
 WATERMANS, SEWERS AND OTHER
 UNDERGROUND AND OVERGROUND UTILITIES AND
 STRUCTURES IS NOT NECESSARILY SHOWN ON
 THE CONTRACT DRAWINGS, AND WHERE SHOWN,
 THE ACCURACY OF THE POSITION OF SUCH
 UTILITIES AND STRUCTURES IS NOT GUARANTEED.
 BEFORE STARTING WORK, DETERMINE THE EXACT
 LOCATION OF ALL SUCH UTILITIES AND
 STRUCTURES AND ASSUME ALL LIABILITY FOR
 DAMAGE TO THEM.

**PRELIMINARY
 NOT FOR
 CONSTRUCTION**

No.	REVISION	DATE	BY
6	REVISED AS PER CITY OF OTTAWA COMMENTS	JAN 2023	SAZ
5	REVISED AS PER CITY OF OTTAWA COMMENTS	NOV 24/22	SAZ
4	REVISED AS PER CITY OF OTTAWA COMMENTS	AUG 19/22	SAZ
3	ISSUED FOR COORDINATION	AUG 10/22	SAZ
2	REVISED AS PER CITY OF OTTAWA COMMENTS	JUN 3/22	SAZ
1	ISSUED WITH SITE PLAN APPLICATION	JUL 22/21	JAG



FOR REVIEW ONLY

SAZ
 MSP
 MTM
 SAZ
 MSP

PROFESSIONAL ENGINEER
 S.A.N. ZORZEL
 100191487
 2015
 PROVINCE OF ONTARIO

NOVATECH
 Engineers, Planners & Landscape Architects
 Suite 200, 240 Michael Cowland Drive
 Ottawa, Ontario, Canada K2M 1P6
 Telephone: (613) 254-9643
 Facsimile: (613) 254-5867
 Website: www.novatech-eng.com

CITY OF OTTAWA
 375 DESCHATELETS AVENUE
 GREYSTONE VILLAGE PHASE 3
 DRAWING NAME
STORMWATER MANAGEMENT PLAN

PROJECT NO: 114025-PH3
 REV: # 6
 DRAWING NO: 114025-STW(PH3)
 #17640

114025-STW(PH3) - Stormwater Management Plan - Phase 3 - 2023-01-17 10:00am