

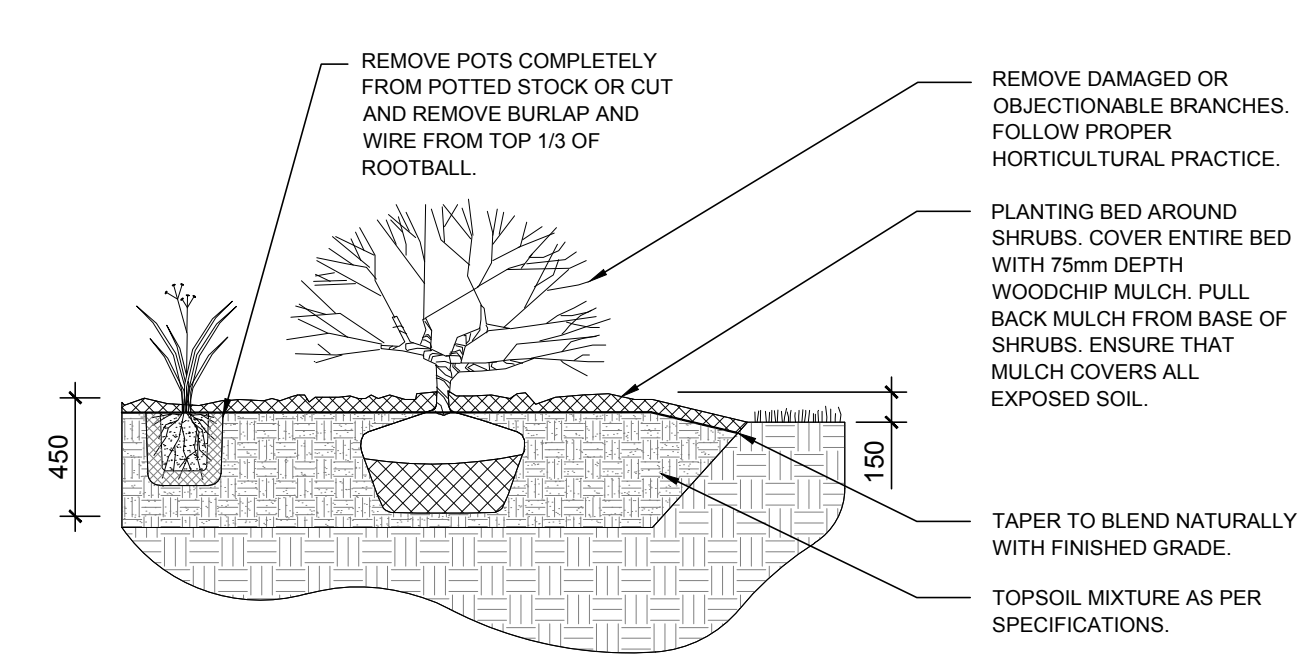
EXISTING TREE LIST						
KEY	Qty.	BOTANICAL NAME	COMMON NAME	SIZE	CONDITION	REMARKS
TREES						
AG	4	Acer ginnala	Amur Maple	100-150mm DBH	FAIR-GOOD	To be removed
AN	6	Acer negundo	Manitoba Maple	150-600mm DBH	FAIR-GOOD	To be removed
GT	1	Gleditsia triacanthos	Honey Locust	350mm DBH	GOOD	To remain
PN	9	Pinus nigra	Austrian Pine	200-400mm	FAIR-GOOD	To remain
UP	12	Ulmus pumila	Siberian Elm	100-250mm DBH	DEAD-GOOD	To be removed

* DENOTES NUMEROUS

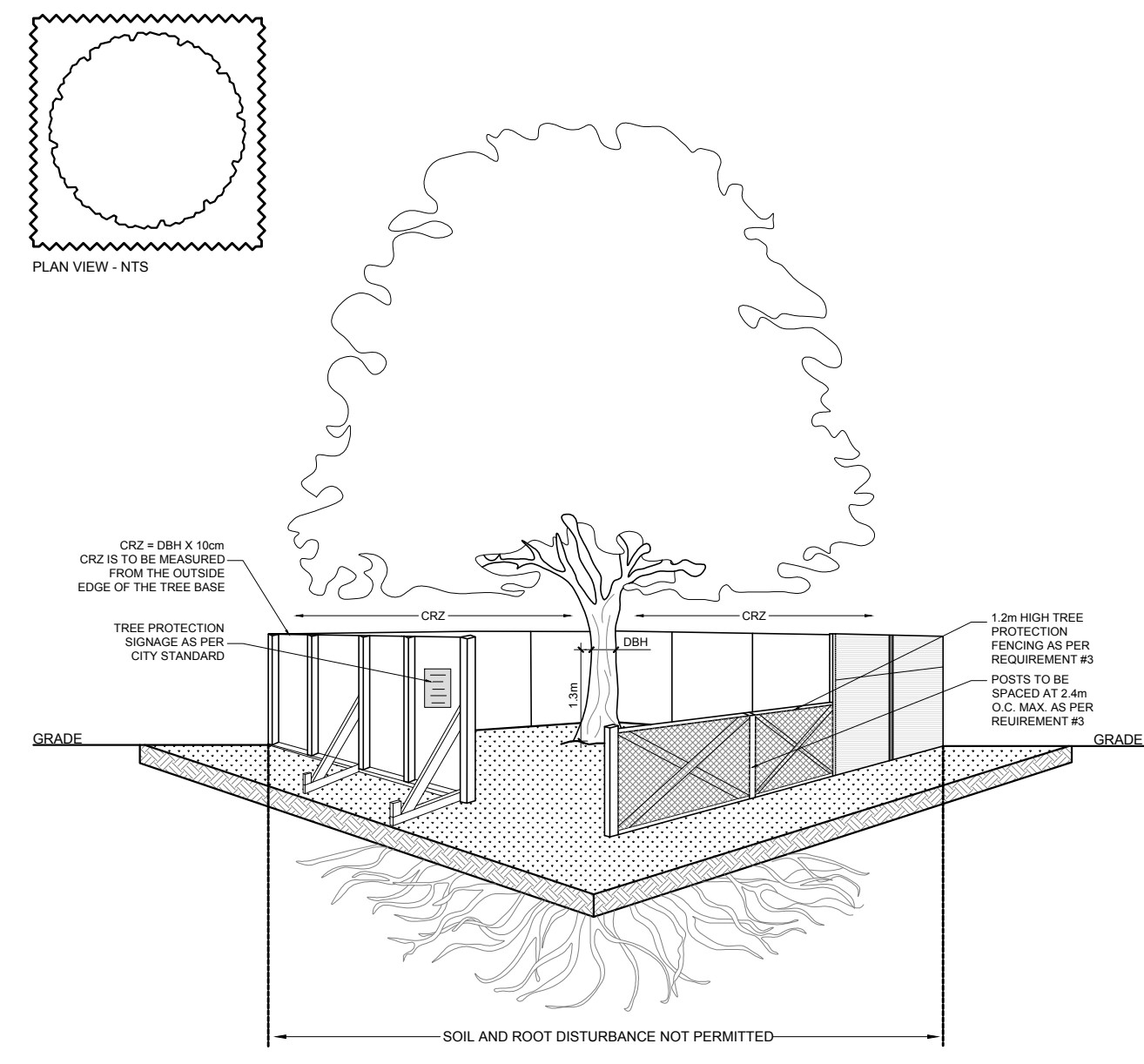
PROPOSED PLANT LIST						
KEY	Qty.	BOTANICAL NAME	COMMON NAME	SIZE	CONDITION	REMARKS
SHRUBS & ORNAMENTAL GRASSES						
HM	8	Plantum virgatum 'Heavy Metal'	Heavy Metal Switch Grass	250mm pot	Potted	800 mm o.c.
RR	114	Rosa rugosa	Rugosa Rose	800mm ht.	Potted	800 mm o.c.

GENERAL NOTES:

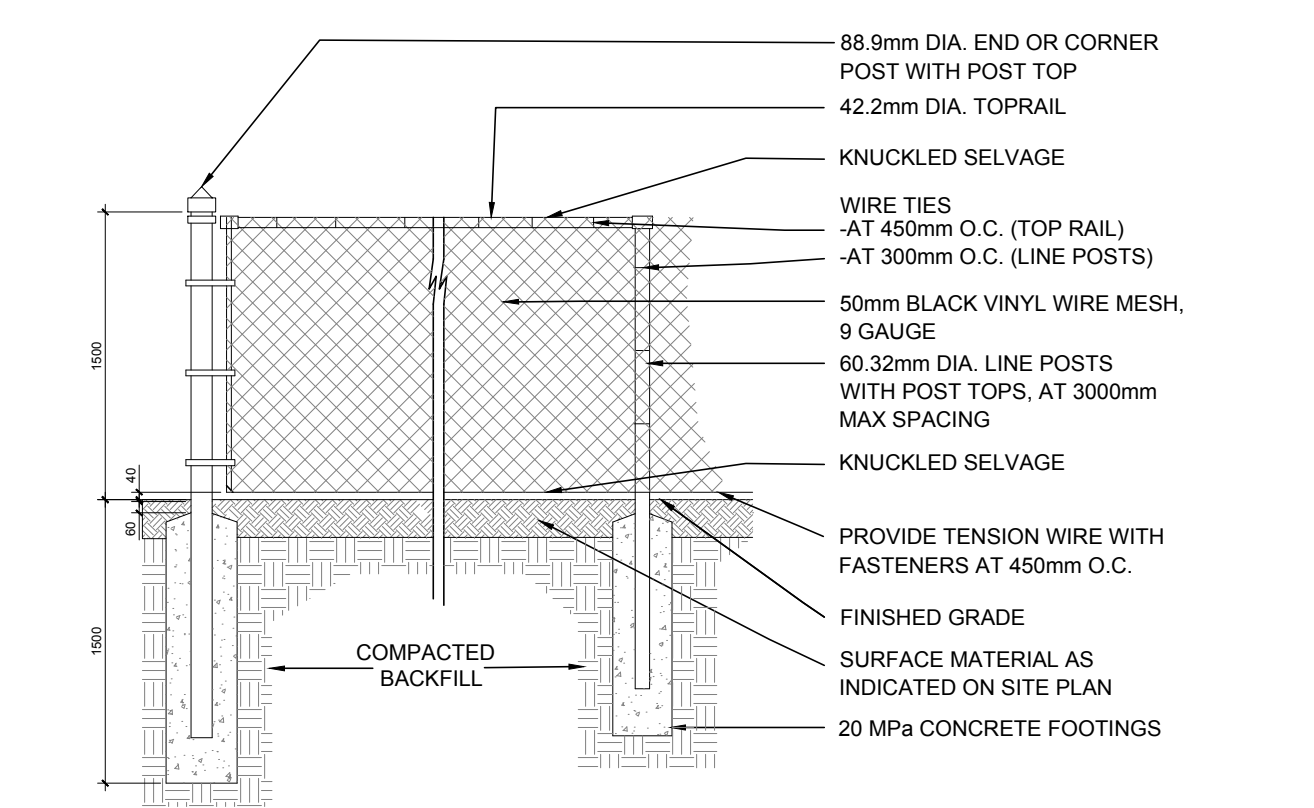
- It is the responsibility of the appropriate contractor or official to report any errors, omissions or discrepancies on this plan with actual site conditions to the Landscape Architect before proceeding with construction.
- The contractor is to notify all utility companies and authorities prior to any excavation and ascertain locations of underground services.
- The contractor is to reinstate all areas and items damaged as a result of construction activity.
- The contractor is to comply with all pertinent codes and by-laws.
- The contractor is to maintain a positive surface run-off throughout the entire construction period.
- The Landscape Architect is not responsible for subsurface conditions.
- The contractor is to identify all existing trees to remain on site with the Landscape Architect prior to construction.
- The contractor is to stake the proposed location of all plant material in conjunction with the Landscape Architect prior to excavation.
- Minimum distances for selected deciduous trees are as follows:
 - Building Foundations 7.5m
 - Sidewalks 1.5m
 - Public Streets 2.5m
 - Underground Infrastructure 2.0m
- All trees within 1m of underground utility trenches are to be excavated by hand.
- Remove all protective wrapping from tree trunks after installation.
- Staking of trees shall only be performed if necessary.
- Ensure that mulch is pulled back a min. distance of 75mm from base of tree trunk.



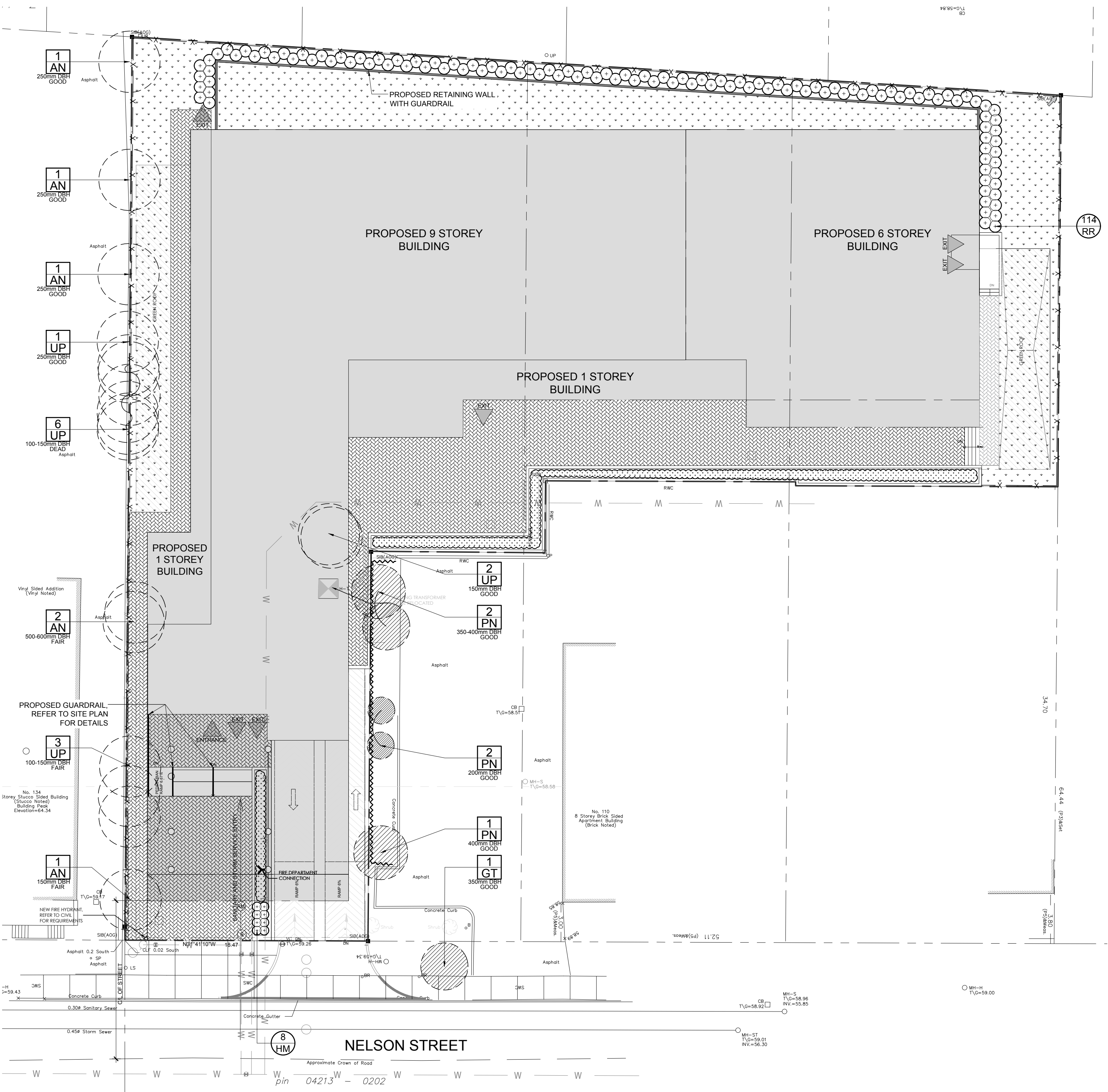
2 SHRUB AND ORNAMENTAL GRASS PLANTING
SCALE: NTS



3 TREE PROTECTION FENCE
SCALE: NTS



4 1500mm ht. ORNAMENTAL METAL FENCE
SCALE: NTS



1 TREE CONSERVATION REPORT & LANDSCAPE PLAN
SCALE: 1:200

CLIENT

SMART LIVING PROPERTIES

CONSULTANTS

ARCHITECTS: **WOODMAN ARCHITECT ASSOCIATES LTD.**

SURVEYORS: ANNIS, O'SULLIVAN, VOLLEBEKK LTD. 14 Concourse Gate, Suite 500, Mississauga, Ont. M2E 2S6. Phone: (613) 727-0850 / Fax: (613) 727-1079

CIVIL ENGINEERS: **wsp**

300-3811 QUEENSWAY DRIVE, OTTAWA, ONTARIO, CANADA, K2B 9K2. TEL: 1-613-629-2000 / FAX: 1-613-629-5299 / WWW.WSPGROUP.COM

LEGEND

- EXISTING TREE TO REMAIN
- EXISTING TREE TO BE REMOVED
- PROPOSED PLANTING AS PER OWNER'S DISCRETION
- PROPOSED UNIT CONCRETE PAVERS
- PROPOSED 1500mm ht. BLACK VINYL CHAIN LINK FENCE
- PROPOSED TREE PROTECTION FENCE
- PROPOSED SHRUBS / ORNAMENTAL GRASSES
- PROPOSED SOD

No.	Issue	Date	MM/DD/YY	DR	CK
2	ISSUED FOR COMMENTS AND REVIEW	08/27/2021	LC	JL	
1	ISSUED FOR COMMENTS AND REVIEW	08/19/2021	LC	JL	

JAMES B. LENNOX & ASSOCIATES INC. LANDSCAPE ARCHITECTS
3332 CARLING AVE. OTTAWA, ONTARIO K2H 5A8
Tel. (613) 722-5168 Fax. (613) 722-5942

PROJECT
112 NELSON STREET REDEVELOPMENT
112 NELSON STREET, OTTAWA ON

DRAWING
TREE CONSERVATION REPORT & LANDSCAPE PLAN

STAMP: ASSOCIATION OF LANDSCAPE ARCHITECTS OF ONTARIO MEMBER

SCALE: AS SHOWN

START DATE: JULY 2021

PROJECT NO.: 20-SMT-2175

PROJECT NORTH

DRAWING NO.: **L.1**

PLOT SIZE ARCH-D