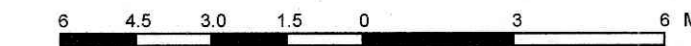


PART OF LOT 3 WEST NELSON STREET LOTS REGISTERED PLAN 43586 CITY OF OTTAWA

Surveyed by Annis, O'Sullivan, Vollebek Ltd.

Scale 1:150



Metric DISTANCES SHOWN ON THIS PLAN ARE IN METRES AND CAN BE CONVERTED TO FEET BY DIVIDING BY 0.3048

Surveyor's Certificate

- I CERTIFY THAT: 1. This survey and plan are correct and in accordance with the Surveys Act, the Surveyors Act and the regulations made under them. 2. The survey was completed on the 25th day of November, 2022.

Date 9/22 T. Hartwick Ontario Land Surveyor

Notes & Legend

Table with 2 columns: Denotes and Description. Includes symbols for Survey Monument Planted, Survey Monument Found, Standard Iron Bar, Short Standard Iron Bar, Iron Bar, Plastic Bar, Cut Cross, Concrete Pin, Witness, Measured, Annis, O'Sullivan, Vollebek Ltd., Registered Plan 43586, (AOG) Plan Dated June 15, 2021, (1473) Plan Dated December 6, 1993, Plan 4R-5803, (857) Plan Dated June 19, 1979, (AOG) Plan Dated May 6, 2021, (857) Field Notes Match 18, 1990, Deciduous Tree, Fire Hydrant, Water Stand Post, Maintenance Hole (Storm Sewer), Maintenance Hole (Sanitary), Maintenance Hole (Hydro), Valve Chamber (Watermain), Overhead Wires, Catch Basin, Monitoring Well, Gas Meter, Chain Link Fence, Sound Barrier Fence, Utility Pole, Diameter, Location of Elevations, Top of Concrete Curb Elevation, Concrete Retaining Wall, Top of Grate, Unidentified Terminal Box, Property Line.

For bearing comparisons, a rotation of 0°42'50" counter-clockwise was applied to bearings on plan P3.

Bearings are grid, derived from Can-Net 2016 Real Time Network GPS observations and are referenced to Specified Control Points 01919680005 and 01919680105, MTM Zone 9 (78°30' West Longitude) NAD-83 (original).

ASSOCIATION OF ONTARIO LAND SURVEYORS PLAN SUBMISSION FORM V-40744. THIS PLAN IS NOT VALID UNLESS IT IS AN EMBOSSED ORIGINAL COPY ISSUED BY THE SURVEYOR in accordance with Regulation 1025, Section 29 (3).

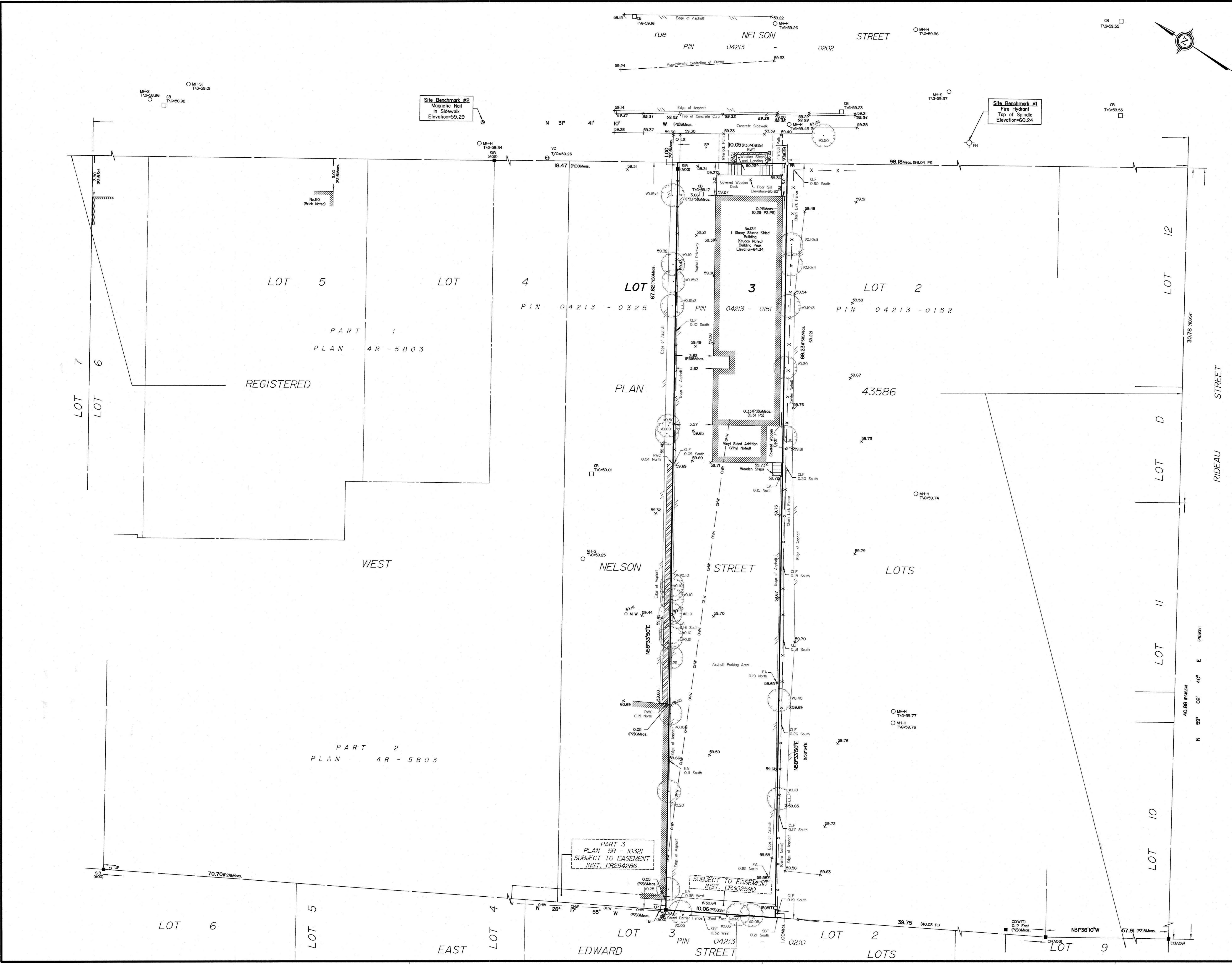
ELEVATION NOTES

- 1. Elevations shown are geodetic and are referred to the CGVD28 geodetic datum. 2. It is the responsibility of the user of this information to verify that the job benchmark has not been altered or disturbed and that its relative elevation and description agrees with the information shown on this drawing.

UTILITY NOTES

- 1. This drawing cannot be accepted as acknowledging all of the utilities and it will be the responsibility of the user to contact the respective utility authorities for confirmation. 2. Only visible surface utilities were located. 3. A field location of underground plant by the pertinent utility authority is mandatory before any work involving breaking ground, probing, excavating etc.

ANIS, O'SULLIVAN, VOLLEBEK LTD. Nepean, Ont. K2E 7S6 Phone: (613) 727-0850 / Fax: (613) 727-1079 Email: info@anniso.com



Vertical text on the left edge of the page.