

PART OF LOT 7 REGISTERED PLAN 4M-658 CITY OF OTTAWA

Surveyed by Annis, O'Sullivan, Vollebek Ltd.

Scale 1 : 250

Metric DISTANCES SHOWN ON THIS PLAN ARE IN METRES AND CAN BE CONVERTED TO FEET BY DIVIDING BY 0.3048

Surveyor's Certificate

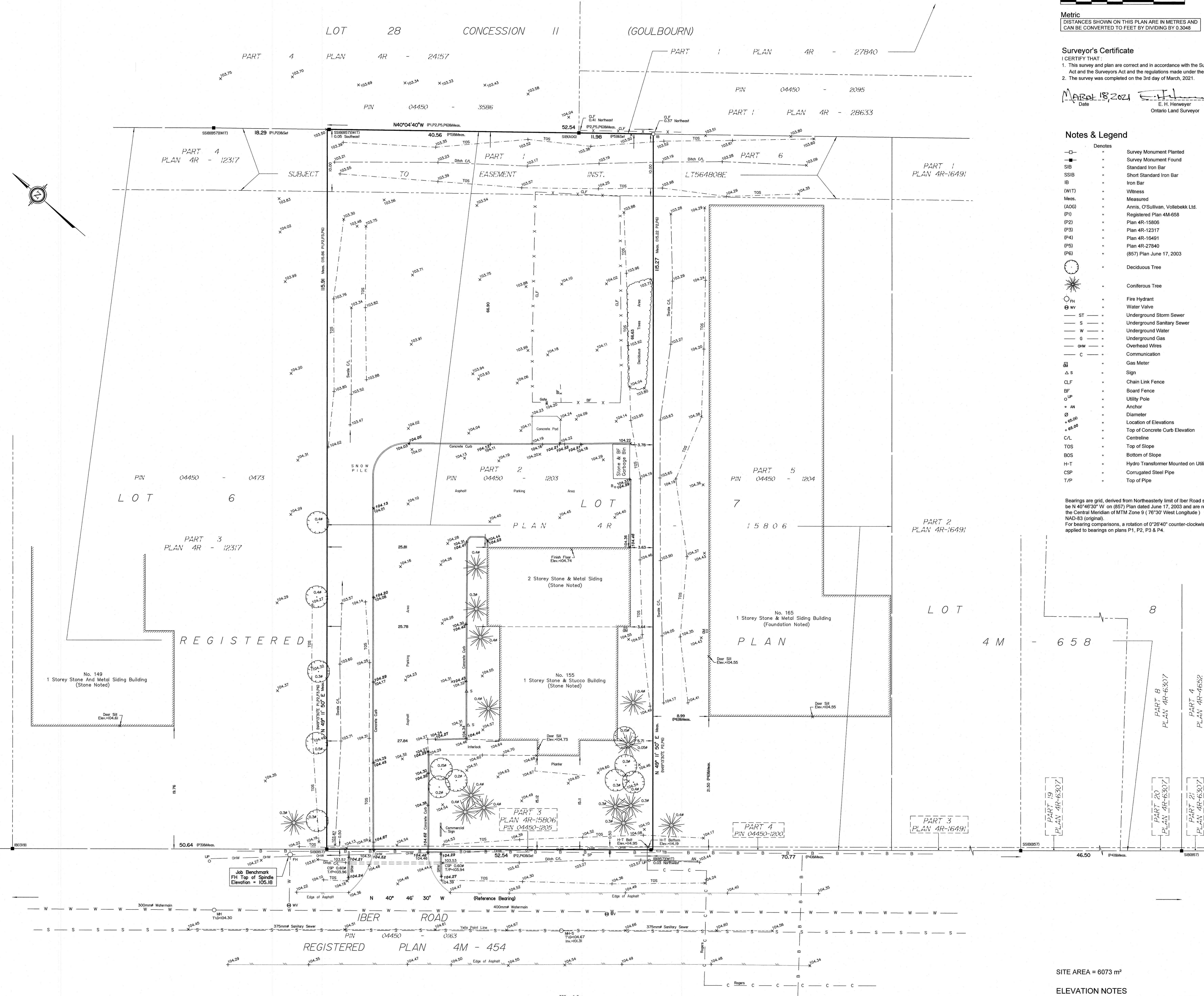
I CERTIFY THAT: 1. This survey and plan are correct and in accordance with the Surveys Act and the Surveyors Act and the regulations made under them. 2. The survey was completed on the 3rd day of March, 2021.

March 18, 2021 Date E. H. Herweyer Ontario Land Surveyor

Notes & Legend

- Denotes Survey Monument Planted, Survey Monument Found, Standard Iron Bar, Short Standard Iron Bar, Iron Bar, Witness, Measured, Annis, O'Sullivan, Vollebek Ltd., Registered Plan 4M-658, Plan 4R-15806, Plan 4R-12317, Plan 4R-16491, Plan 4R-27840, (857) Plan June 17, 2003, Deciduous Tree, Coniferous Tree, Fire Hydrant, Water Valve, Underground Storm Sewer, Underground Sanitary Sewer, Underground Water, Underground Gas, Overhead Wires, Communication, Gas Meter, Sign, Chain Link Fence, Board Fence, Utility Pole, Anchor, Diameter, Location of Elevations, Top of Concrete Curb Elevation, Centreline, Top of Slope, Bottom of Slope, Hydro Transformer Mounted on Utility Pole, Corrugated Steel Pipe, Top of Pipe

Bearings are grid, derived from Northerly limit of IBER Road shown to be N 40° 42' 30" W on (857) Plan dated June 17, 2003 and are referred to the Central Meridian of MTM Zone 9 (176° 30' West Longitude) NAD-83 (original). For bearing comparisons, a rotation of 0° 26' 40" counter-clockwise was applied to bearings on plans P1, P2, P3 & P4.



SITE AREA = 6073 m²

ELEVATION NOTES

1. Elevations shown are geodetic and are referred to the CGVD28 geodetic datum. 2. It is the responsibility of the user of this information to verify that the job benchmark has not been altered or disturbed and that its relative elevation and description agrees with the information shown on this drawing.

UTILITY NOTES

1. This drawing cannot be accepted as acknowledging all of the utilities and it will be the responsibility of the user to contact the respective utility authorities for confirmation. 2. Only visible surface utilities were located. 3. Underground utility data derived from City of Ottawa utility sheet reference R-N-10 and R-N-16. 4. Sanitary and storm sewer grades and inverts were derived from City of Ottawa plan reference PP-8 (sheet 13 of 65). 5. A field location of underground plant by the pertinent utility authority is mandatory before any work involving breaking ground, probing, excavating etc.

ASSOCIATION OF ONTARIO LAND SURVEYORS PLAN SUBMISSION FORM 2165326

Topographic data was collected under Winter Conditions. Snow cover and ice preclude determining location and elevation of some topographical data that is otherwise visible.