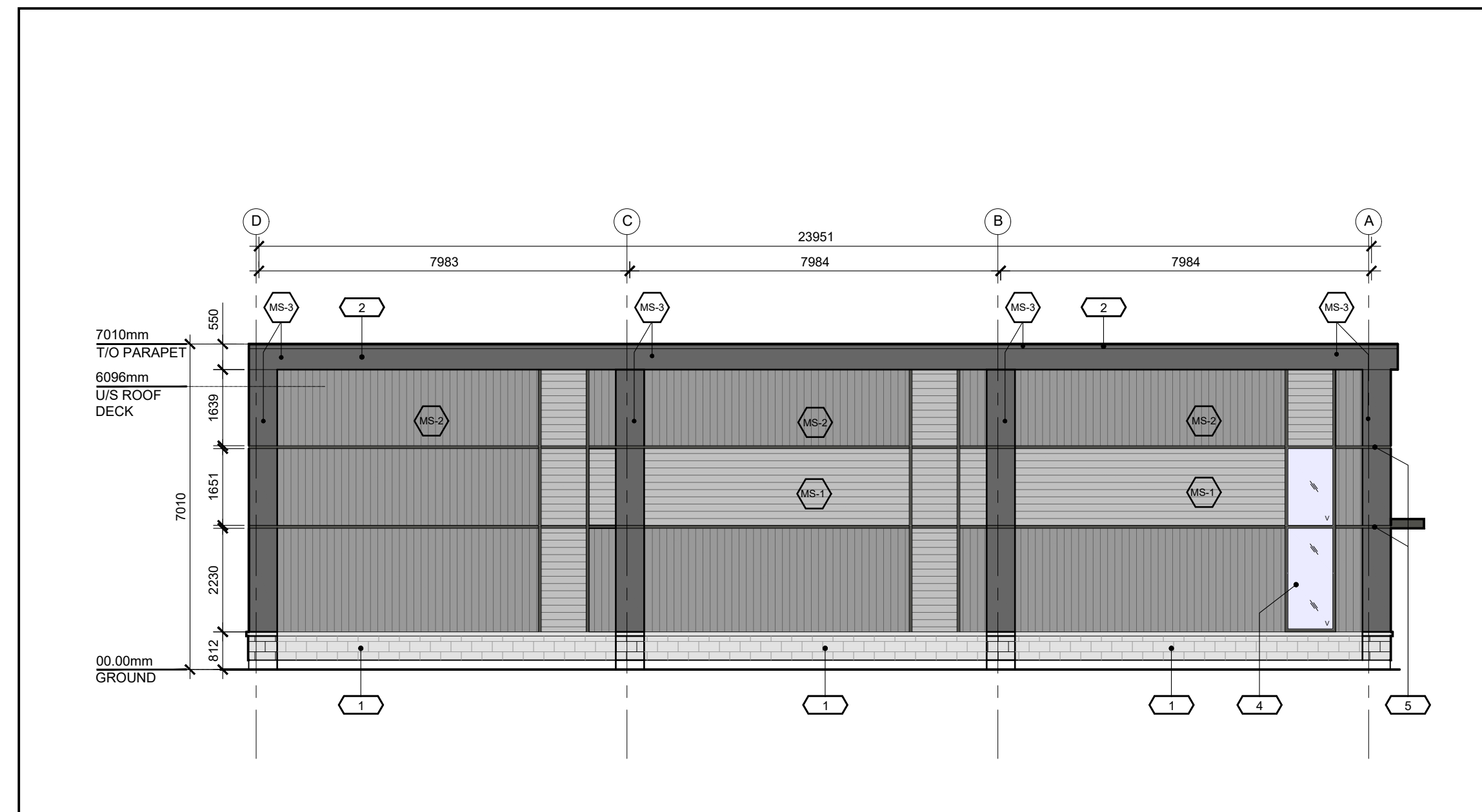
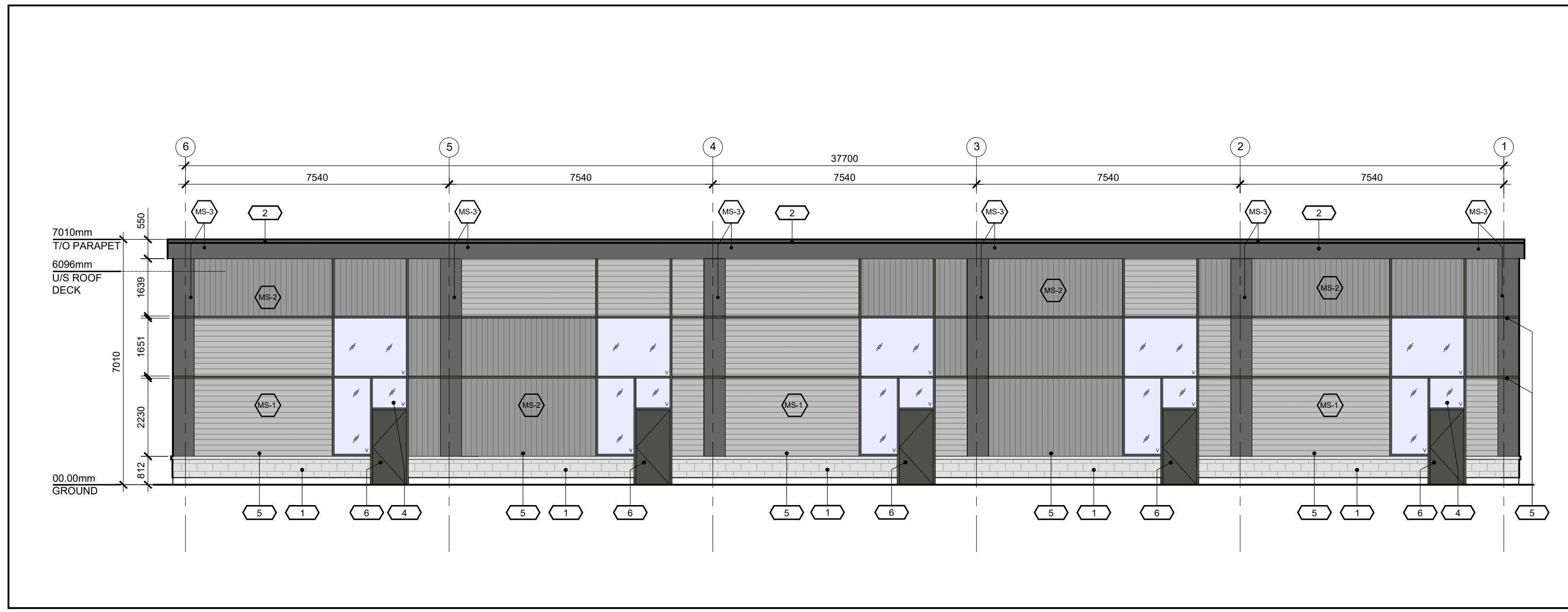


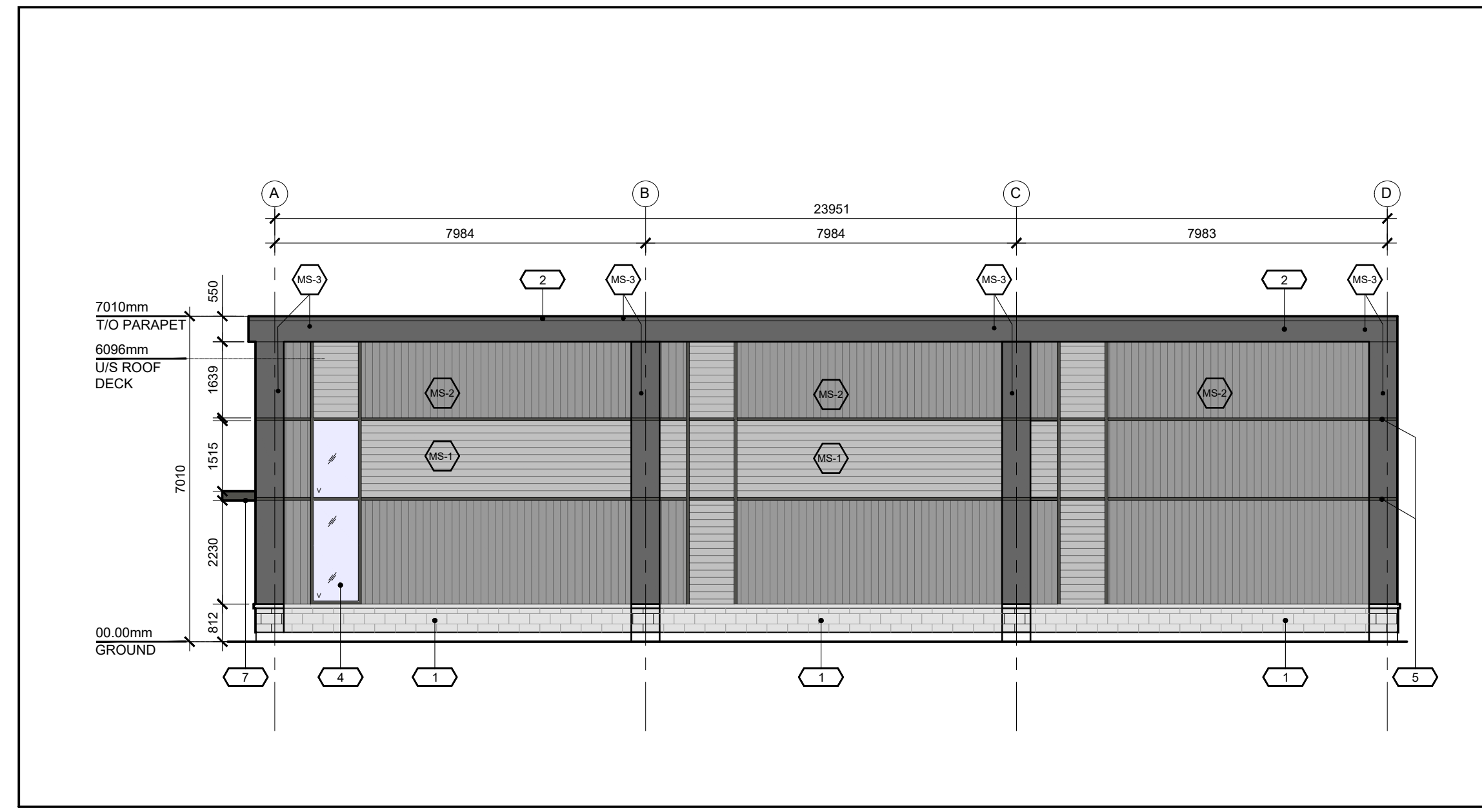
**01 SOUTH ELEVATION**  
SP-A02 SCALE: 1:100



**02 WEST ELEVATION**  
SP-A02 SCALE: 1:100



**03 NORTH ELEVATION**  
SP-A02 SCALE: 1:100



**04 EAST ELEVATION**  
SP-A02 SCALE: 1:100



**05 RESERVED**  
SP-A02 SCALE: N/A

**KEY NOTES & MATERIALS**

	EXTERIOR METAL CLADDING Colour: LIGHT GREY
	EXTERIOR METAL CLADDING Colour: MEDIUM GREY
	EXTERIOR METAL CLADDING Colour: DARK GREY
	EXTERIOR MASONRY
	EXTERIOR METAL FLASHING Colour: BLACK
	GARAGE DOOR Colour: TO MATCH MS-1
	GLAZING - VISION GLASS Mullion Colour: BLACK
	2" METAL REVEAL Colour: TO MATCH MS-3
	EXIT DOOR Colour: TO MATCH MS-1
	ENTRANCE CANOPY

**06 MATERIALS & NOTES**  
SP-A02 SCALE: N/A

North

Revisions

No.	By	Description	Date
01	KE	ISSUED FOR REVIEW	2021-05-06
02	KE	ISSUED FOR SPA	2021-07-06

Project

**POWER-TEK  
PROPOSED  
INDUSTRIAL BUILDING**

155 IBER ROAD, OTTAWA

Drawing  
**EXTERIOR ELEVATIONS**

Scale AS SHOWN Stamp

Drawn

KE

Checked

JAS



Project No.

21-106

Date 2021-04-02

Drawing No.

**SP-A02**