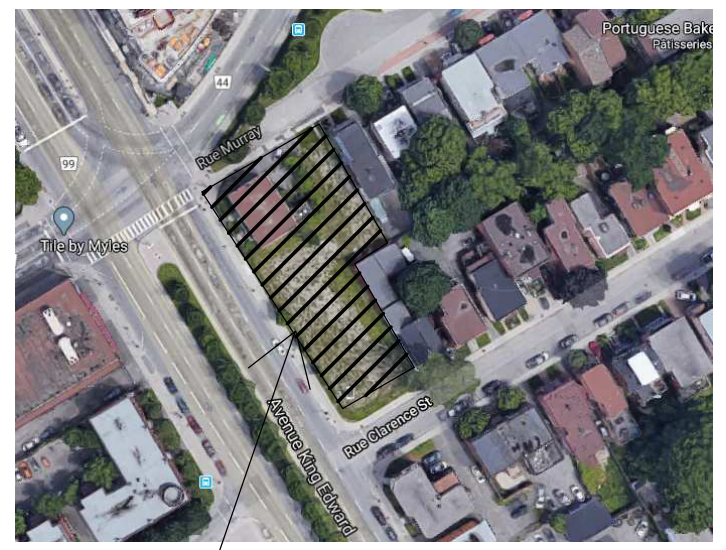


KEY PLAN



PROJECT

ALL CONTRACTORS TO VERIFY ALL DIMENSIONS ON SITE AND TO REPORT ALL ERRORS AND/OR OMISSIONS TO THE ARCHITECT.

ALL CONTRACTORS MUST COMPLY WITH ALL CODES AND BYLAWS AND OTHER AUTHORITIES HAVING JURISDICTION OVER THE WORK.

DO NOT SCALE DRAWINGS.

THIS DRAWING MAY NOT BE USED FOR CONSTRUCTION UNTIL SIGNED BY THE ARCHITECT.

COPYRIGHT RESERVED.

#	Description	DD/MM/YY
3	ISSUED FOR SITE PLAN APPROVAL	15/03/22
2	ISSUED FOR SITE PLAN APPROVAL	03/12/21
1	ISSUED FOR SITE PLAN APPROVAL	15/03/21

**M** MOMENTUM - PLANNING & COMMUNICATIONS  
1165 GREENLAWN CRESCENT, OTTAWA, ON K2C 1T4

**WOODMAN ARCHITECT ASSOCIATES LTD.**

4 BEECHWOOD, SUITE 201 OTTAWA, ONTARIO, CANADA K1L 8L9  
TEL: 613 228 9850 • FAX 613 228 9848 • mail@woodmanarchitect.com

CONSULTANTS:  
STRUCTURAL - D+M STRUCTURAL LTD.  
MECHANICAL - JAIN SUSTAINABILITY CONSULTANT INC.  
CIVIL - WSP  
ELECTRICAL - JAIN SUSTAINABILITY CONSULTANT INC.  
LANDSCAPING - JAMES B. LENNOX & ASSOCIATES INC.

CLIENT:

**165177 CANADA INC**  
22 RUE TASCHEREAU - GATINEAU, QC J8Y 2V4

PROJECT

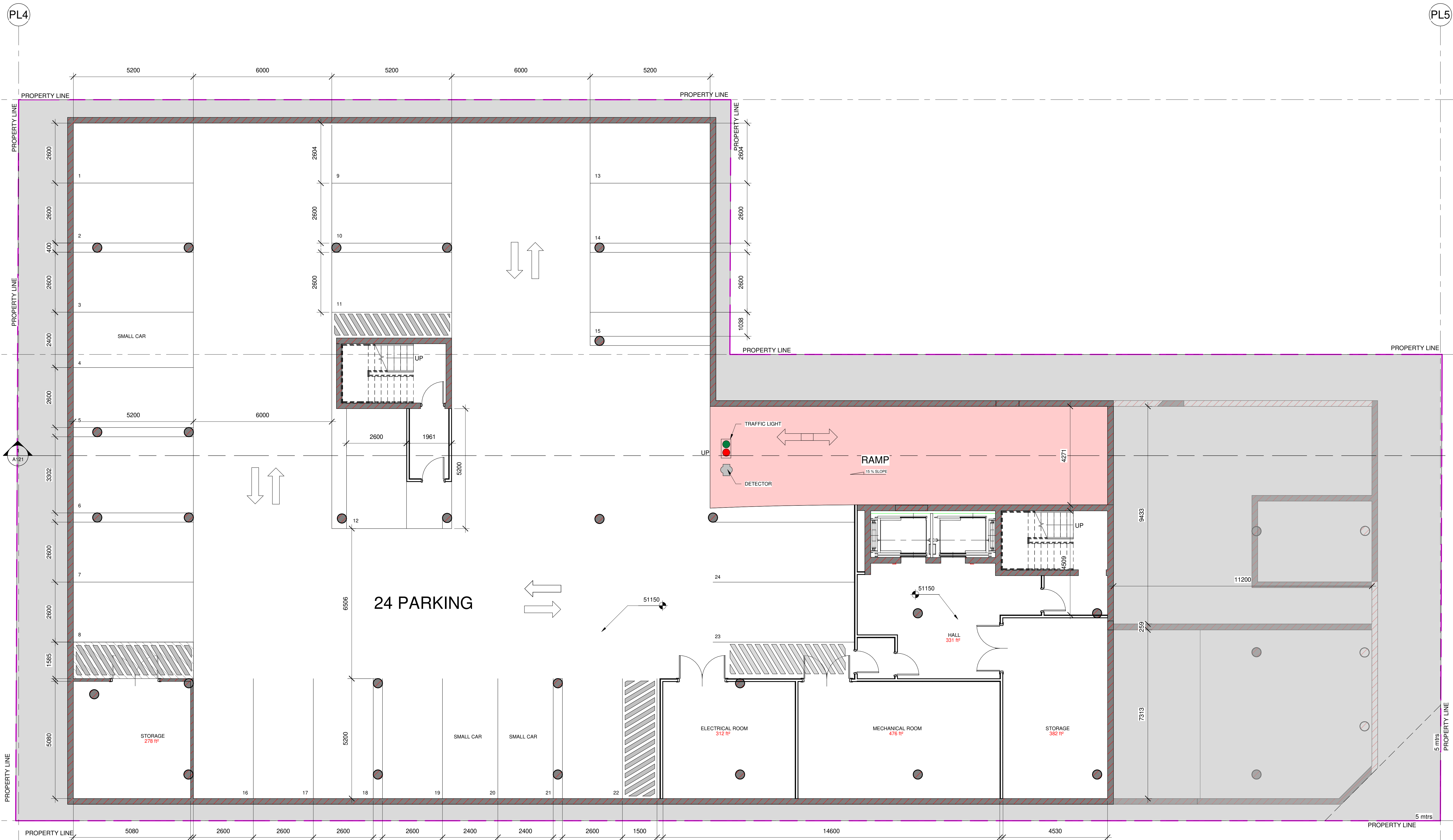
**BOUTIQUE HOTEL KING EDWARD**  
275 KING EDWARD - OTTAWA, ON K1N 7M2

DRAWING:

**PARKING LEVEL 2**

DATE	2022-04-05 08:04:26	REV. NO.	1969
SCALE	1:75	DRAWN BY	
APPROVED BY	Autour	CHECKED BY	
DESIGNED BY	Vérificateur		

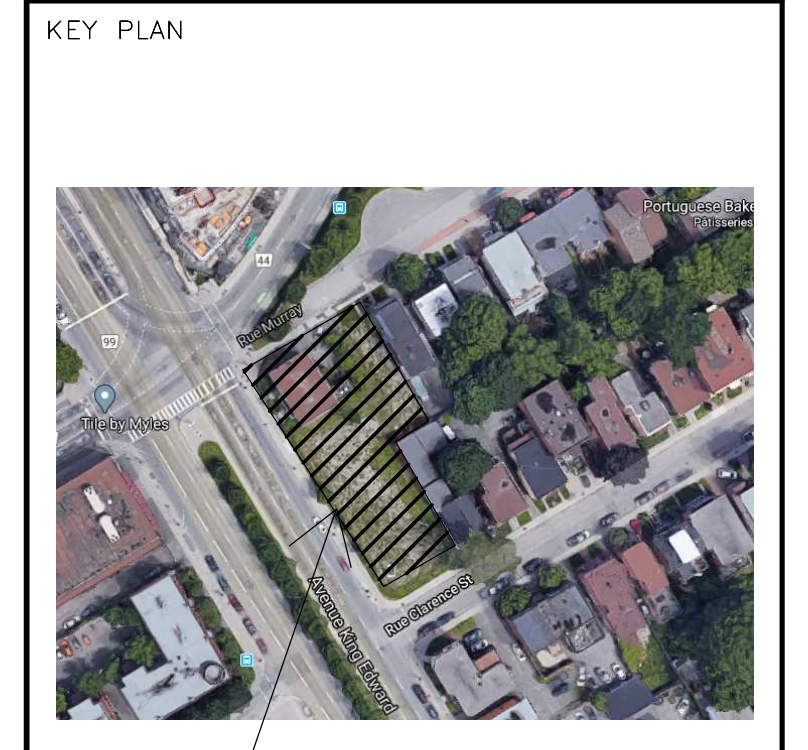
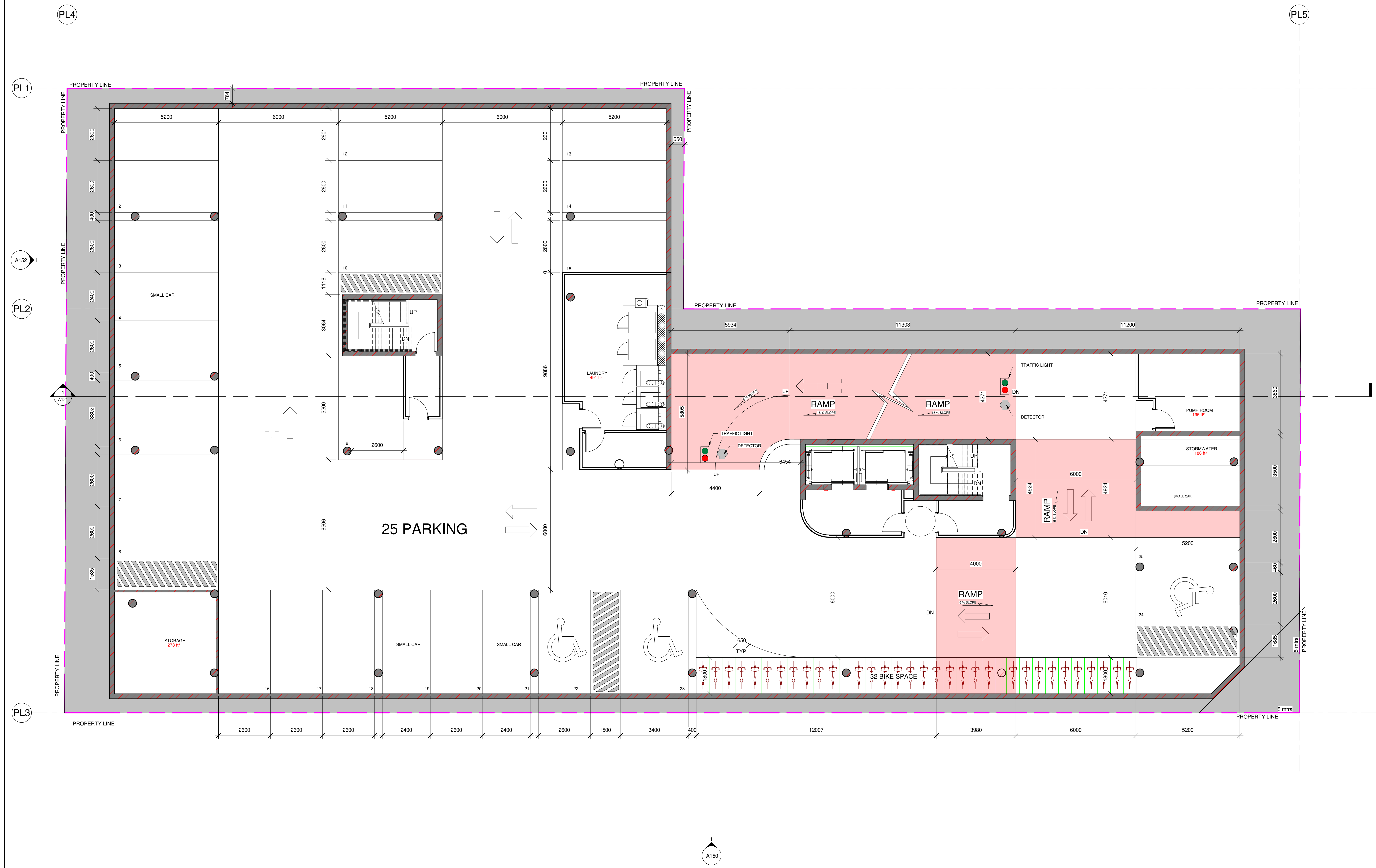
**A102**



UNEXCAVATED

**1** PARKING LEVEL 2  
A102 1:75

007-12-21-0128\_02-02-21-00850



PROJECT

ALL CONTRACTORS TO VERIFY ALL DIMENSIONS ON SITE AND TO REPORT ALL ERRORS AND/OR OMISSIONS TO THE ARCHITECT.

ALL CONTRACTORS MUST COMPLY WITH ALL CODES AND BYLAWS AND OTHER AUTHORITIES HAVING JURISDICTION OVER THE WORK.

DO NOT SCALE DRAWINGS.

THIS DRAWING MAY NOT BE USED FOR CONSTRUCTION UNTIL SIGNED BY THE ARCHITECT.

COPYRIGHT RESERVED.

#	Description	DD/MM/YY
3	ISSUED FOR SITE PLAN APPROVAL	15/03/22
2	ISSUED FOR SITE PLAN APPROVAL	03/12/21
1	ISSUED FOR SITE PLAN APPROVAL	15/03/21

**M** MOMENTUM - PLANNING & COMMUNICATIONS  
1165 GREENLAWN CRESCENT, OTTAWA, ON K2C 1Z4

**WOODMAN ARCHITECT ASSOCIATES LTD.**  
4 BEECHWOOD, SUITE 201 OTTAWA, ONTARIO, CANADA K1L 8L9  
TEL: 613 228 9850 • FAX: 613 228 9848 • mail@woodmanarchitect.com

CONSULTANTS:  
STRUCTURAL - D+M STRUCTURAL LTD.  
MECHANICAL - JAIN SUSTAINABILITY CONSULTANT INC.  
CIVIL - WSP  
ELECTRICAL - JAIN SUSTAINABILITY CONSULTANT INC.  
LANDSCAPING - JAMES B. LENNOX & ASSOCIATES INC.

CLIENT:  
**165177 CANADA INC**  
22 RUE TASCHEREAU - GATINEAU, QC J8Y 2V4

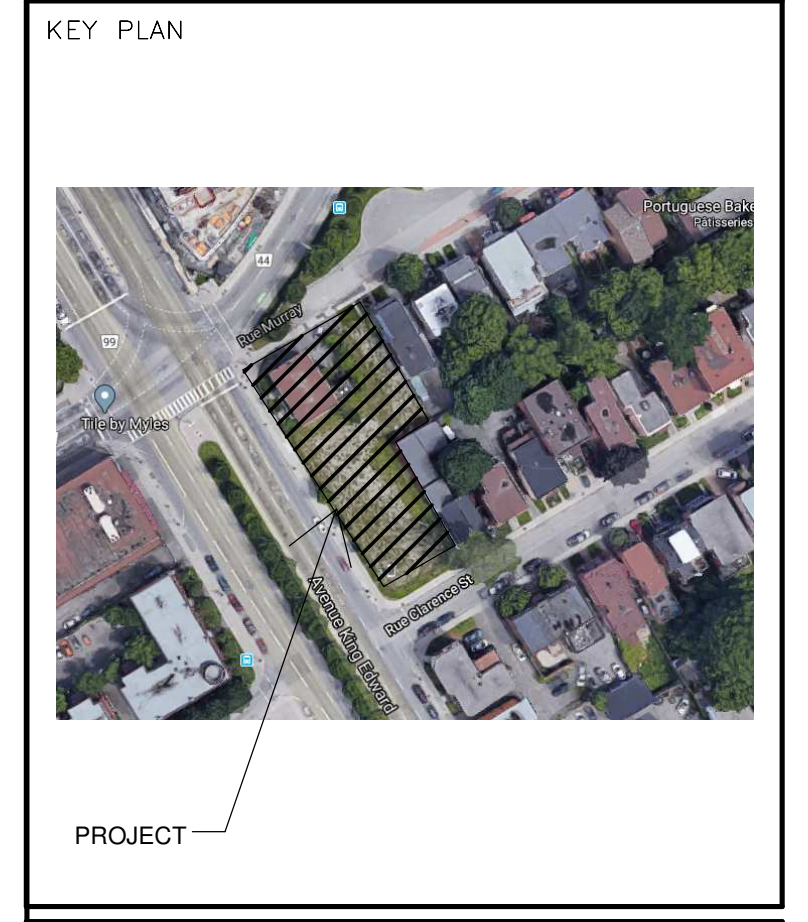
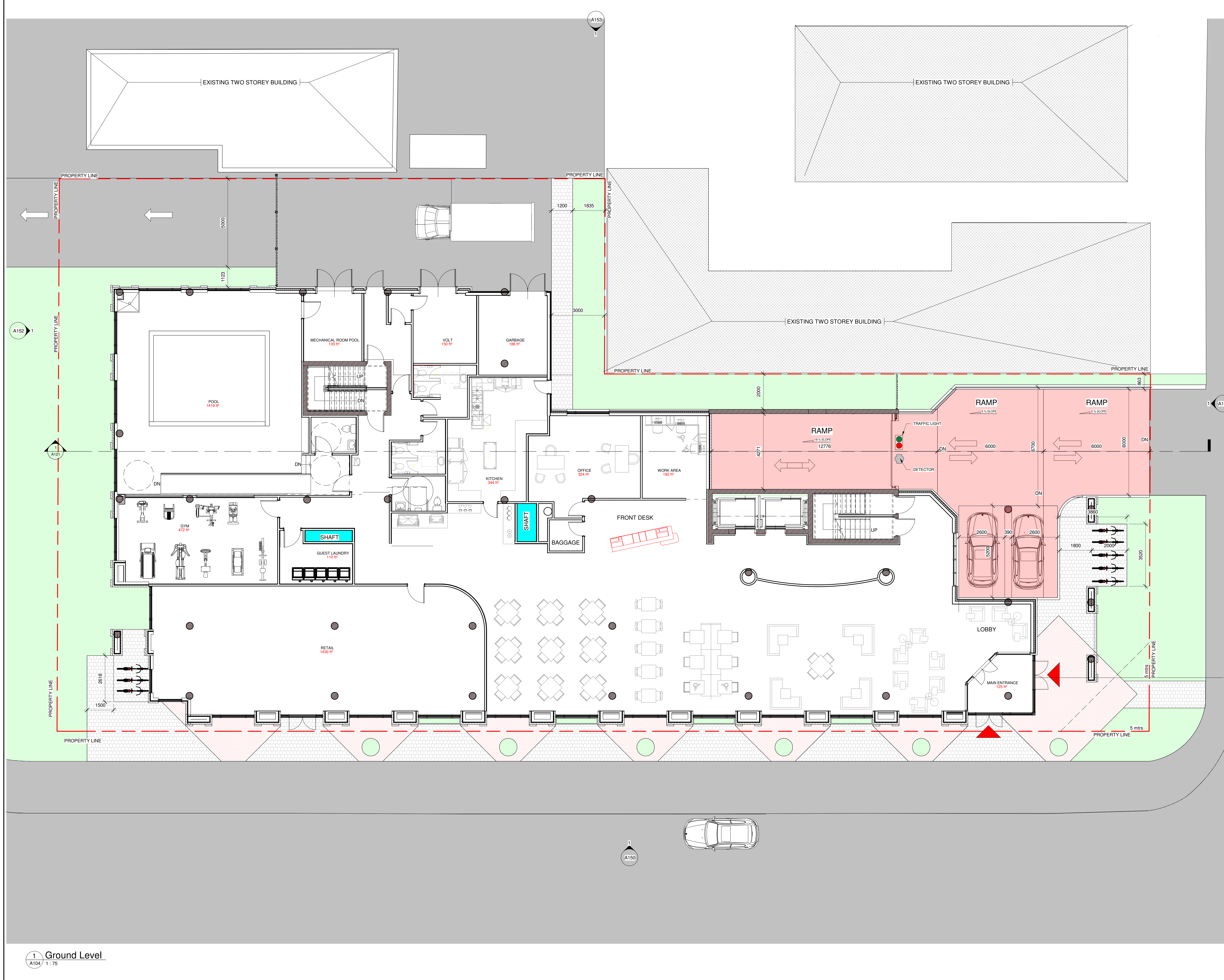
PROJECT  
**BOUTIQUE HOTEL KING EDWARD**  
275 KING EDWARD - OTTAWA, ON K1N 7M2

DRAWING:  
**PARKING LEVEL 1**

DATE	2022-04-05 08:04:27	REV. NO.	1969
SCALE	1:75	DRAWN BY	A103
APPROVED BY	Auteur	CHECKED BY	Vérificateur

**1** PARKING LEVEL 1  
1 : 75

007-12-21-0128\_002-02-21-00650



ALL CONTRACTORS TO VERIFY ALL DIMENSIONS ON SITE AND TO REPORT ALL ERRORS AND/OR OMISSIONS TO THE ARCHITECT.

ALL CONTRACTORS MUST COMPLY WITH ALL CODES AND BY-LAWS AND OTHER AUTHORITIES HAVING JURISDICTION OVER THE WORK.

DO NOT SCALE DRAWINGS.

THIS DRAWING MAY NOT BE USED FOR CONSTRUCTION UNTIL SIGNED BY THE ARCHITECT.

COPYRIGHT RESERVED.

#	Description	DD/MM/YY
3	ISSUED FOR SITE PLAN APPROVAL	15/03/22
2	ISSUED FOR SITE PLAN APPROVAL	03/12/21
1	ISSUED FOR SITE PLAN APPROVAL	15/03/21

**M** MOMENTUM - PLANNING & COMMUNICATIONS  
1165 GREENLAWN CRESCENT, OTTAWA, ON K2C 1Z4

**WOODMAN ARCHITECT ASSOCIATES LTD.**

4 BEECHWOOD, SUITE 201 OTTAWA, ONTARIO, CANADA K1L 8J9  
TEL: 613 228 9850 • FAX: 613 228 9848 • mail@woodmanarchitect.com

CONSULTANTS:  
STRUCTURAL - D+M STRUCTURAL LTD.  
MECHANICAL - JAIN SUSTAINABILITY CONSULTANT INC.  
CIVIL - WSP  
ELECTRICAL - JAIN SUSTAINABILITY CONSULTANT INC.  
LANDSCAPING - JAMES B. LENNOX & ASSOCIATES INC.

CLIENT:  
**165177 CANADA INC**  
22 RUE TASCHEREAU - GATINEAU, QC J8Y 2V4

PROJECT  
**BOUTIQUE HOTEL KING EDWARD**  
275 KING EDWARD - OTTAWA, ON K1N 7M2

DRAWING:  
**GROUND LEVEL**

DATE: 2022-04-05 08:04:35	REV. NO: 1969
SCALE: 1:75	DRAWN BY: A104
APPROVED BY: Auteur	VERIFIED BY: Verificateur
	<b>A104</b>

1 Ground Level  
A104 1:75

007-12-21-0128\_002-02-21-00850