

- 1 METAL PANEL
- 2 BRICK
- 3 STONE
- 4 METAL FLASHING
- 5 ALUMINUM WINDOW
- 6 GLASS RAILING

PL4

PROPERTY LINE OVER MURRAY ST

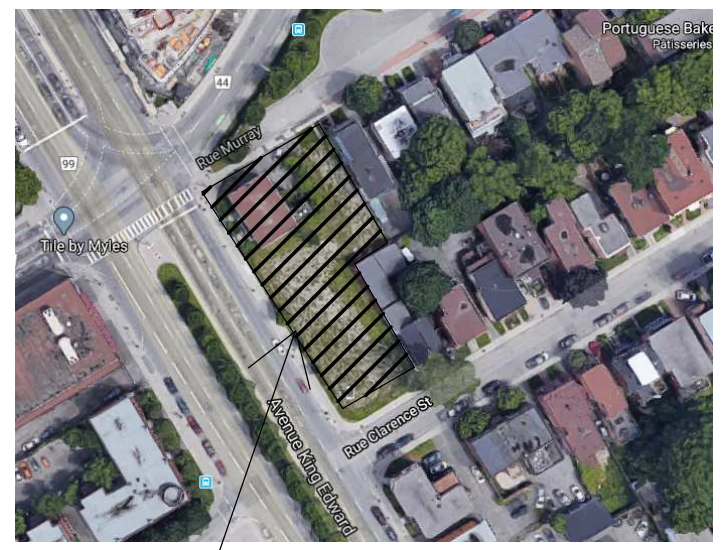


PL5

PROPERTY LINE OVER CLARENCE ST

- Roof 82600
- Level 8 79700
- Level 7 76800
- Level 6 73900
- Level 5 71000
- Level 4 68100
- Level 3 65200
- Level 2 62300
- Ground Level 57500

KEY PLAN



PROJECT

ALL CONTRACTORS TO VERIFY ALL DIMENSIONS ON SITE AND TO REPORT ALL ERRORS AND/OR OMISSIONS TO THE ARCHITECT.

ALL CONTRACTORS MUST COMPLY WITH ALL CODES AND BYLAWS AND OTHER AUTHORITIES HAVING JURISDICTION OVER THE WORK.

DO NOT SCALE DRAWINGS.

THIS DRAWING MAY NOT BE USED FOR CONSTRUCTION UNTIL SIGNED BY THE ARCHITECT.

COPYRIGHT RESERVED.

#	Description	DD/MM/YY
3	ISSUED FOR SITE PLAN APPROVAL	15/03/22
2	ISSUED FOR SITE PLAN APPROVAL	03/12/21
1	ISSUED FOR SITE PLAN APPROVAL	15/03/21

M MOMENTUM - PLANNING & COMMUNICATIONS
1165 GREENLAWN CRESCENT, OTTAWA, ON K2C 1T4

WOODMAN ARCHITECT ASSOCIATES LTD.

4 BEECHWOOD, SUITE 201 OTTAWA, ONTARIO, CANADA K1L 8L9
TEL: 613 228 9850 • FAX: 613 228 9848 • mail@woodmanarchitect.com

CONSULTANTS:
STRUCTURAL - D+M STRUCTURAL LTD.
MECHANICAL - JAIN SUSTAINABILITY CONSULTANT INC.
CIVIL - WSP
ELECTRICAL - JAIN SUSTAINABILITY CONSULTANT INC.
LANDSCAPING - JAMES B. LENNOX & ASSOCIATES INC.

CLIENT:

165177 CANADA INC
22 RUE TASCHEREAU - GATINEAU, QC J8Y 2V4

PROJECT
BOUTIQUE HOTEL KING EDWARD
275 KING EDWARD - OTTAWA, ON K1N 7M2

DRAWING:
WEST ELEVATION

DATE: 2022-04-05 08:08:45	REV. NO: 1969
SCALE: 1:75	DRAWN BY:
DESIGNED BY: Auteur	A125
VERIFIED BY: Vérificateur	

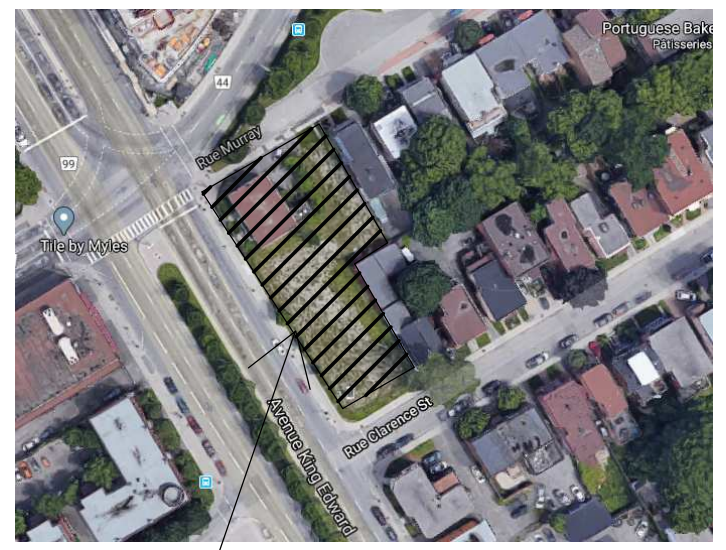
1 WEST ELEVATION
A125 1:75

007-12-21-0128_002-02-21-00850

- 1 METAL PANEL
- 2 BRICK
- 3 STONE
- 4 METAL FLASHING
- 5 ALUMINUM WINDOW
- 6 GLASS RAILING



KEY PLAN



PROJECT

ALL CONTRACTORS TO VERIFY ALL DIMENSIONS ON SITE AND TO REPORT ALL ERRORS AND/OR OMISSIONS TO THE ARCHITECT.
 ALL CONTRACTORS MUST COMPLY WITH ALL CODES AND BYLAWS AND OTHER AUTHORITIES HAVING JURISDICTION OVER THE WORK.
 DO NOT SCALE DRAWINGS.
 THIS DRAWING MAY NOT BE USED FOR CONSTRUCTION UNTIL SIGNED BY THE ARCHITECT.
 COPYRIGHT RESERVED.

#	Description	DD/MM/YY
3	ISSUED FOR SITE PLAN APPROVAL	15/03/22
2	ISSUED FOR SITE PLAN APPROVAL	03/12/21
1	ISSUED FOR SITE PLAN APPROVAL	15/03/21

M MOMENTUM - PLANNING & COMMUNICATIONS
 1165 GREENLAWN CRESCENT, OTTAWA, ON K2C 1Z4

WOODMAN ARCHITECT ASSOCIATES LTD.

4 BEECHWOOD, SUITE 201 OTTAWA, ONTARIO, CANADA K1L 8L9
 TEL: 613 228 9850 • FAX: 613 228 9848 • mail@woodmanarchitect.com

CONSULTANTS:
 STRUCTURAL - D+M STRUCTURAL LTD.
 MECHANICAL - JAIN SUSTAINABILITY CONSULTANT INC.
 CIVIL - WSP
 ELECTRICAL - JAIN SUSTAINABILITY CONSULTANT INC.
 LANDSCAPING - JAMES B. LENNOX & ASSOCIATES INC.

CLIENT:

165177 CANADA INC
 22 RUE TASCHEREAU - GATINEAU, QC J8Y 2V4

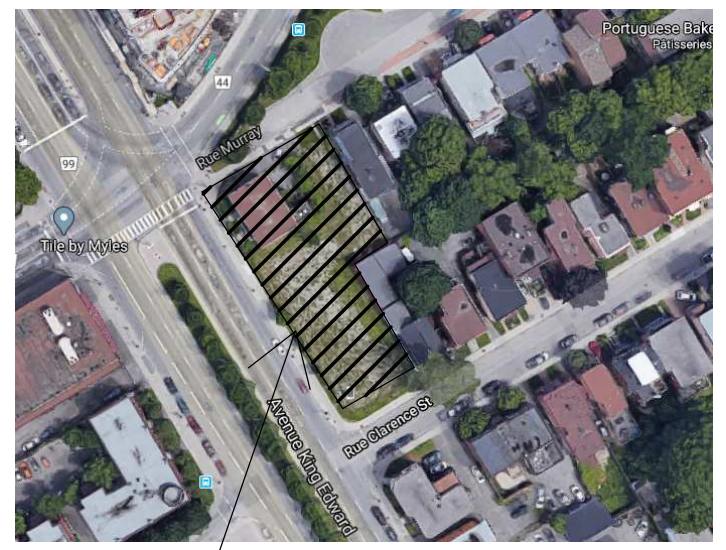
PROJECT
BOUTIQUE HOTEL KING EDWARD
 275 KING EDWARD - OTTAWA, ON K1N 7M2

DRAWING:
SOUTH ELEVATION

DATE: 2022-04-05 08:07:15	REV. NO: 1969
SCALE: 1:75	DRAWING SET
DRAWN BY: Audea	A126
VERIFIED BY: Verificateur	

- 1 METAL PANEL
- 2 BRICK
- 3 STONE
- 4 METAL FLASHING
- 5 ALUMINUM WINDOW
- 6 GLASS RAILING

KEY PLAN



PROJECT

ALL CONTRACTORS TO VERIFY ALL DIMENSIONS ON SITE AND TO REPORT ALL ERRORS AND/OR OMISSIONS TO THE ARCHITECT.
 ALL CONTRACTORS MUST COMPLY WITH ALL CODES AND BYLAWS AND OTHER AUTHORITIES HAVING JURISDICTION OVER THE WORK.
 DO NOT SCALE DRAWINGS.
 THIS DRAWING MAY NOT BE USED FOR CONSTRUCTION UNTIL SIGNED BY THE ARCHITECT.
 COPYRIGHT RESERVED.

#	Description	DD/MM/YY
3	ISSUED FOR SITE PLAN APPROVAL	15/03/22
2	ISSUED FOR SITE PLAN APPROVAL	03/12/21
1	ISSUED FOR SITE PLAN APPROVAL	15/03/21

M MOMENTUM - PLANNING & COMMUNICATIONS
 1165 GREENLAWN CRESCENT, OTTAWA, ON K2C 1Z4

WOODMAN ARCHITECT ASSOCIATES LTD.

4 BEECHWOOD, SUITE 201 OTTAWA, ONTARIO, CANADA K1L 8L9
 TEL: 613 228 9850 • FAX 613 228 9848 • mail@woodmanarchitect.com

CONSULTANTS:
 STRUCTURAL - D+M STRUCTURAL LTD.
 MECHANICAL - JAIN SUSTAINABILITY CONSULTANT INC.
 CIVIL - WSP
 ELECTRICAL - JAIN SUSTAINABILITY CONSULTANT INC.
 LANDSCAPING - JAMES B. LENNOX & ASSOCIATES INC.

CLIENT:

165177 CANADA INC
 22 RUE TASCHEREAU - GATINEAU, QC J8Y 2V4

PROJECT
BOUTIQUE HOTEL KING EDWARD
 275 KING EDWARD - OTTAWA, ON K1N 7M2

DRAWING:
NORTH ELEVATION

DATE: 2022-04-05 08:08:02	REV. NO: 1969
SCALE: 1:75	DRAWING SET
DRAWN BY: Audea	A127
CHECKED BY: Veronique	

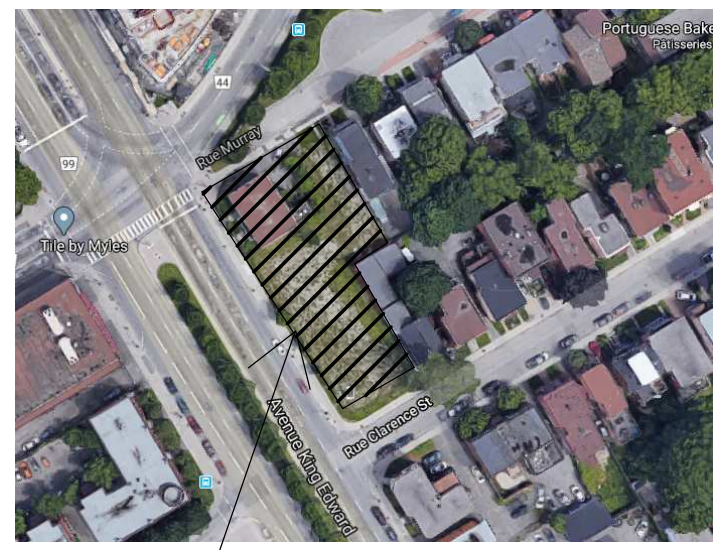


1 NORTH ELEVATION
 A127 1:75

007-12-21-0128_002-02-21-00850

- 1 METAL PANEL
- 2 BRICK
- 3 STONE
- 4 METAL FLASHING
- 5 ALUMINUM WINDOW
- 6 GLASS RAILING

KEY PLAN



PROJECT

ALL CONTRACTORS TO VERIFY ALL DIMENSIONS ON SITE AND TO REPORT ALL ERRORS AND/OR OMISSIONS TO THE ARCHITECT.
 ALL CONTRACTORS MUST COMPLY WITH ALL CODES AND BYLAWS AND OTHER AUTHORITIES HAVING JURISDICTION OVER THE WORK.
 DO NOT SCALE DRAWINGS.
 THIS DRAWING MAY NOT BE USED FOR CONSTRUCTION UNTIL SIGNED BY THE ARCHITECT.
 COPYRIGHT RESERVED.

#	Description	DD/MM/YY
3	ISSUED FOR SITE PLAN APPROVAL	15/03/22
2	ISSUED FOR SITE PLAN APPROVAL	03/12/21
1	ISSUED FOR SITE PLAN APPROVAL	15/03/21

M MOMENTUM - PLANNING & COMMUNICATIONS
 1165 GREENLAWN CRESCENT, OTTAWA, ON K2C 1T4

WOODMAN ARCHITECT ASSOCIATES LTD.

4 BEECHWOOD, SUITE 201 OTTAWA, ONTARIO, CANADA K1L 8L9
 TEL: 613 228 9850 • FAX: 613 228 9848 • mail@woodmanarchitect.com

CONSULTANTS:
 STRUCTURAL – D+M STRUCTURAL LTD.
 MECHANICAL – JAIN SUSTAINABILITY CONSULTANT INC.
 CIVIL – WSP
 ELECTRICAL – JAIN SUSTAINABILITY CONSULTANT INC.
 LANDSCAPING – JAMES B. LENNOX & ASSOCIATES INC.

CLIENT:
165177 CANADA INC
 22 RUE TASCHEREAU – GATINEAU, QC J8Y 2V4

PROJECT
BOUTIQUE HOTEL KING EDWARD
 275 KING EDWARD – OTTAWA, ON K1N 7M2

DRAWING:
EAST ELEVATION

DATE: 2022-04-05 08:08:34	REV. NO: 1969
SCALE: 1:75	DRAWING SET
DRAWN BY: Auteur	A128
CHECKED BY: Vérificateur	

