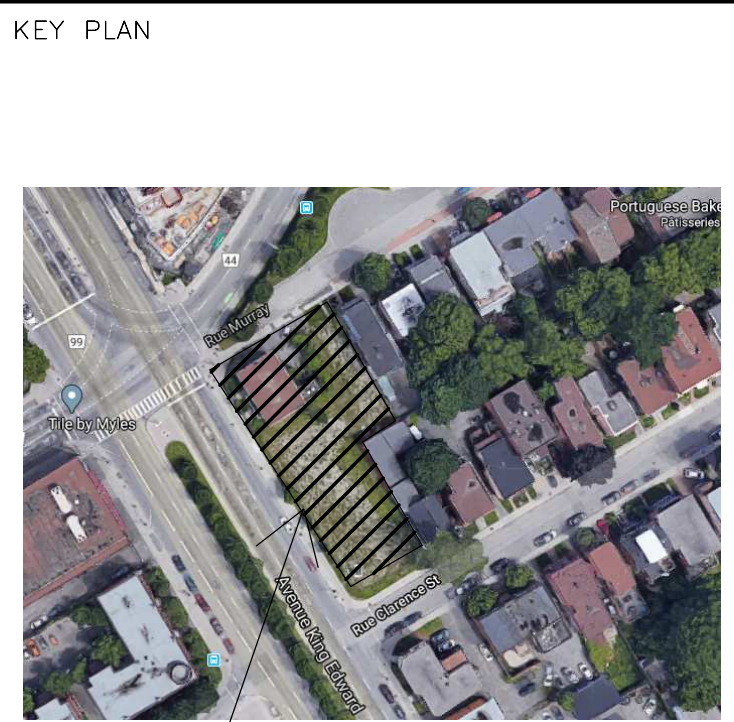


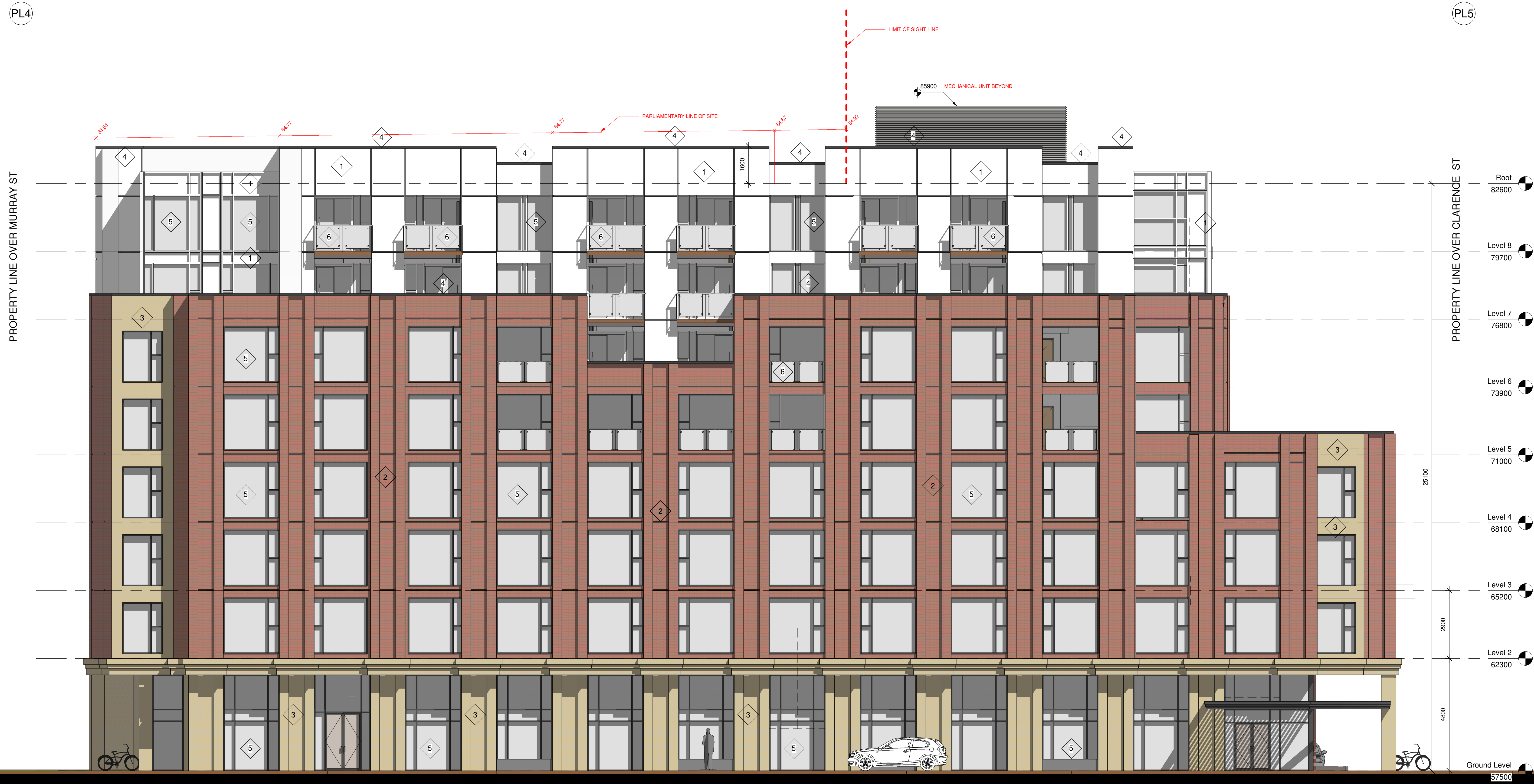
- 1 METAL PANEL
- 2 BRICK
- 3 STONE
- 4 METAL FLASHING
- 5 ALUMINUM WINDOW
- 6 GLASS RAILING

Andrew McCreight
ANDREW MCCREIGHT
 MANAGER (A), DEVELOPMENT REVIEW CENTRAL
 PLANNING, REAL ESTATE & ECONOMIC DEVELOPMENT
 DEPARTMENT, CITY OF OTTAWA

APPROVED
 By Andrew McCreight at 12:15 pm, Dec 22, 2023



PROJECT



ALL CONTRACTORS TO VERIFY ALL DIMENSIONS ON SITE AND TO REPORT ALL ERRORS AND/OR OMISSIONS TO THE ARCHITECT.
 ALL CONTRACTORS MUST COMPLY WITH ALL CODES AND BYLAWS AND OTHER AUTHORITIES HAVING JURISDICTION OVER THE WORK.
 DO NOT SCALE DRAWINGS.
 THIS DRAWING MAY NOT BE USED FOR CONSTRUCTION UNTIL SIGNED BY THE ARCHITECT.
 COPYRIGHT RESERVED.

#	Description	DD/MM/YY
4	ISSUED FOR SITE PLAN APPROVAL	28/04/22
3	ISSUED FOR SITE PLAN APPROVAL	15/03/22
2	ISSUED FOR SITE PLAN APPROVAL	03/12/21
1	ISSUED FOR SITE PLAN APPROVAL	15/03/21

M MOMENTUM - PLANNING & COMMUNICATIONS
 1145 GREENLAWN CRESCENT, OTTAWA, ON K2C 1T4

WOODMAN ARCHITECT ASSOCIATES LTD.
 4 BEECHWOOD, SUITE 201 OTTAWA, ONTARIO, CANADA K1L 8L9
 TEL: 613 228 9850 • FAX: 613 228 9848 • mail@woodmanarchitect.com

CONSULTANTS:
 STRUCTURAL - D+M STRUCTURAL LTD.
 MECHANICAL - JAIN SUSTAINABILITY CONSULTANT INC.
 CIVIL - WSP
 ELECTRICAL - JAIN SUSTAINABILITY CONSULTANT INC.
 LANDSCAPING - JAMES B. LENNOX & ASSOCIATES INC.
 CLIENT:

165177 CANADA INC
 22 RUE TASCHEREAU - GATINEAU, QC J8Y 2V4

PROJECT
BOUTIQUE HOTEL KING EDWARD
 275 KING EDWARD - OTTAWA, ON K1N 7M2

DRAWING:
WEST ELEVATION

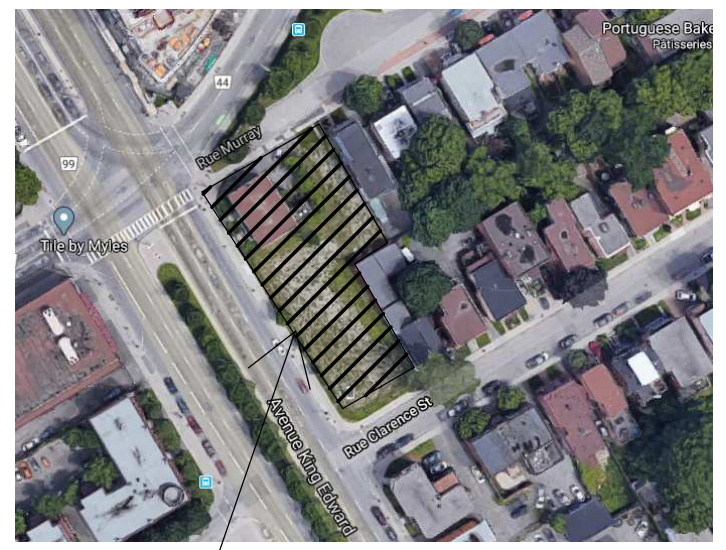
DATE: 2022-04-26 12:07:49	REV. NO: 1969
SCALE: 1:75	DRAWN BY:
DESIGNED BY: Auteur	A125
VERIFIED BY: Vérificateur	

- 1 METAL PANEL
- 2 BRICK
- 3 STONE
- 4 METAL FLASHING
- 5 ALUMINUM WINDOW
- 6 GLASS RAILING

Andrew McCreight
 ANDREW MCCREIGHT
 MANAGER (A), DEVELOPMENT REVIEW CENTRAL
 PLANNING, REAL ESTATE & ECONOMIC DEVELOPMENT
 DEPARTMENT, CITY OF OTTAWA

APPROVED
 By Andrew McCreight at 12:15 pm, Dec 22, 2023

KEY PLAN



PROJECT



ALL CONTRACTORS TO VERIFY ALL DIMENSIONS ON SITE AND TO REPORT ALL ERRORS AND/OR OMISSIONS TO THE ARCHITECT.

ALL CONTRACTORS MUST COMPLY WITH ALL CODES AND BYLAWS AND OTHER AUTHORITIES HAVING JURISDICTION OVER THE WORK.

DO NOT SCALE DRAWINGS.

THIS DRAWING MAY NOT BE USED FOR CONSTRUCTION UNTIL SIGNED BY THE ARCHITECT.

COPYRIGHT RESERVED.

#	Description	DD/MM/YY
4	ISSUED FOR SITE PLAN APPROVAL	28/04/22
3	ISSUED FOR SITE PLAN APPROVAL	15/03/22
2	ISSUED FOR SITE PLAN APPROVAL	03/12/21
1	ISSUED FOR SITE PLAN APPROVAL	15/03/21

M MOMENTUM - PLANNING & COMMUNICATIONS
 1165 GREENLAWN CRESCENT, OTTAWA, ON K2C 1Z4

WOODMAN ARCHITECT ASSOCIATES LTD.

4 BEECHWOOD, SUITE 201 OTTAWA, ONTARIO, CANADA K1L 8L9
 TEL: 613 228 9850 • FAX 613 228 9848 • mail@woodmanarchitect.com

CONSULTANTS:
 STRUCTURAL - D+M STRUCTURAL LTD.
 MECHANICAL - JAIN SUSTAINABILITY CONSULTANT INC.
 CIVIL - WSP
 ELECTRICAL - JAIN SUSTAINABILITY CONSULTANT INC.
 LANDSCAPING - JAMES B. LENNOX & ASSOCIATES INC.

CLIENT:

165177 CANADA INC
 22 RUE TASCHEREAU - GATINEAU, QC J8Y 2V4

PROJECT
BOUTIQUE HOTEL KING EDWARD
 275 KING EDWARD - OTTAWA, ON K1N 7M2

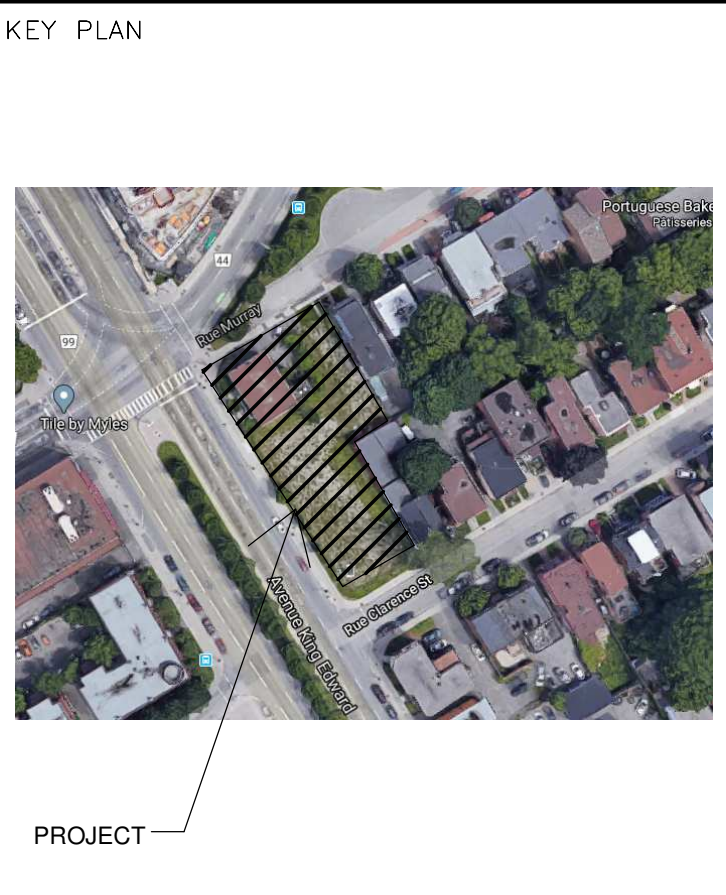
DRAWING:
SOUTH ELEVATION

DATE	2022-04-26 12:08:53	REV. NO.	1969
SCALE	1:75	DRAWING SET	
DRAWN BY	Autour	A126	
CHECKED BY	Vérificateur		

- 1 METAL PANEL
- 2 BRICK
- 3 STONE
- 4 METAL FLASHING
- 5 ALUMINUM WINDOW
- 6 GLASS RAILING

Andrew McCreight
ANDREW MCCREIGHT
 MANAGER (A), DEVELOPMENT REVIEW CENTRAL
 PLANNING, REAL ESTATE & ECONOMIC DEVELOPMENT
 DEPARTMENT, CITY OF OTTAWA

APPROVED
 By Andrew McCreight at 12:15 pm, Dec 22, 2023



ALL CONTRACTORS TO VERIFY ALL DIMENSIONS ON SITE AND TO REPORT ALL ERRORS AND/OR OMISSIONS TO THE ARCHITECT.
 ALL CONTRACTORS MUST COMPLY WITH ALL CODES AND BYLAWS AND OTHER AUTHORITIES HAVING JURISDICTION OVER THE WORK.
 DO NOT SCALE DRAWINGS.
 THIS DRAWING MAY NOT BE USED FOR CONSTRUCTION UNTIL SIGNED BY THE ARCHITECT.
 COPYRIGHT RESERVED.

#	Description	DD/MM/YY
4	ISSUED FOR SITE PLAN APPROVAL	28/04/22
3	ISSUED FOR SITE PLAN APPROVAL	15/03/22
2	ISSUED FOR SITE PLAN APPROVAL	03/12/21
1	ISSUED FOR SITE PLAN APPROVAL	15/03/21

M MOMENTUM - PLANNING & COMMUNICATIONS
 1145 GREENLAWN CRESCENT, OTTAWA, ON K2C 1T4

WOODMAN ARCHITECT ASSOCIATES LTD.
 4 BEECHWOOD, SUITE 201 OTTAWA, ONTARIO, CANADA K1L 8L9
 TEL: 613 228 9850 • FAX 613 228 9848 • mail@woodmanarchitect.com

CONSULTANTS:
 STRUCTURAL - D+M STRUCTURAL LTD.
 MECHANICAL - JAIN SUSTAINABILITY CONSULTANT INC.
 CIVIL - WSP
 ELECTRICAL - JAIN SUSTAINABILITY CONSULTANT INC.
 LANDSCAPING - JAMES B. LENNOX & ASSOCIATES INC.

CLIENT:
165177 CANADA INC
 22 RUE TASCHEREAU - GATINEAU, QC J8Y 2V4

PROJECT
BOUTIQUE HOTEL KING EDWARD
 275 KING EDWARD - OTTAWA, ON K1N 7M2

DRAWING:
NORTH ELEVATION

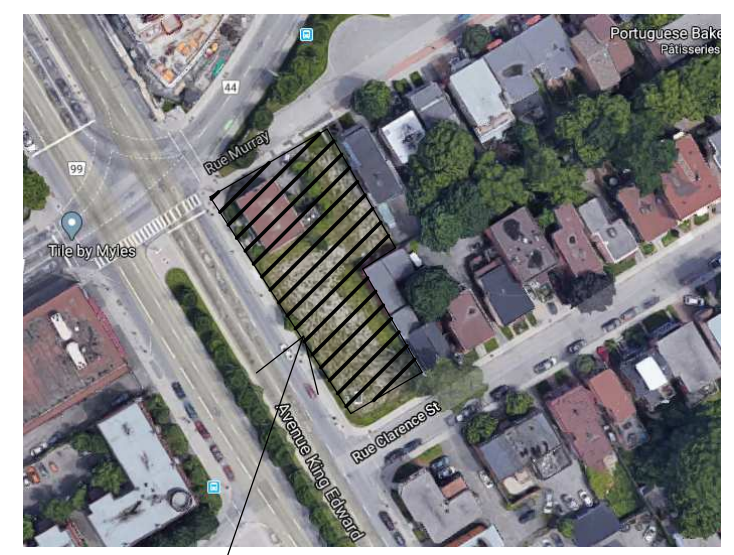
DATE	2022-04-26 12:09:20	REV. NO.	1969
SCALE	1:75	DRAWING NO.	
DRAWN BY	Autour	A127	
CHECKED BY	Vérificateur		

- 1 METAL PANEL
- 2 BRICK
- 3 STONE
- 4 METAL FLASHING
- 5 ALUMINUM WINDOW
- 6 GLASS RAILING

Andrew McCreight
ANDREW MCCREIGHT
 MANAGER (A), DEVELOPMENT REVIEW CENTRAL
 PLANNING, REAL ESTATE & ECONOMIC DEVELOPMENT
 DEPARTMENT, CITY OF OTTAWA

APPROVED
 By Andrew McCreight at 12:15 pm, Dec 22, 2023

KEY PLAN



PROJECT

PL5

PROPERTY LINE OVER CLARENCE ST



PL4

PROPERTY LINE OVER MURRAY ST

- Roof 82600
- Level 8 79700
- Level 7 76800
- Level 6 73900
- Level 5 71000
- Level 4 68100
- Level 3 65200
- Level 2 62300
- Ground Level 57500

ALL CONTRACTORS TO VERIFY ALL DIMENSIONS ON SITE AND TO REPORT ALL ERRORS AND/OR OMISSIONS TO THE ARCHITECT.
 ALL CONTRACTORS MUST COMPLY WITH ALL CODES AND BYLAWS AND OTHER AUTHORITIES HAVING JURISDICTION OVER THE WORK.
 DO NOT SCALE DRAWINGS.
 THIS DRAWING MAY NOT BE USED FOR CONSTRUCTION UNTIL SIGNED BY THE ARCHITECT.
 COPYRIGHT RESERVED.

#	Description	DD/MM/YY
4	ISSUED FOR SITE PLAN APPROVAL	28/04/22
3	ISSUED FOR SITE PLAN APPROVAL	15/03/22
2	ISSUED FOR SITE PLAN APPROVAL	03/12/21
1	ISSUED FOR SITE PLAN APPROVAL	15/03/21

M MOMENTUM - PLANNING & COMMUNICATIONS
 1145 GREENLAWN CRESCENT, OTTAWA, ON K2C 1T4

WOODMAN ARCHITECT ASSOCIATES LTD.

4 BEECHWOOD, SUITE 201 OTTAWA, ONTARIO, CANADA K1L 8L9
 TEL: 613 228 9850 • FAX 613 228 9848 • mail@woodmanarchitect.com

CONSULTANTS:
 STRUCTURAL - D+M STRUCTURAL LTD.
 MECHANICAL - JAIN SUSTAINABILITY CONSULTANT INC.
 CIVIL - WSP
 ELECTRICAL - JAIN SUSTAINABILITY CONSULTANT INC.
 LANDSCAPING - JAMES B. LENNOX & ASSOCIATES INC.

CLIENT:
165177 CANADA INC
 22 RUE TASCHEREAU - GATINEAU, QC J8Y 2V4

PROJECT
BOUTIQUE HOTEL KING EDWARD
 275 KING EDWARD - OTTAWA, ON K1N 7M2

DRAWING:
EAST ELEVATION

DATE: 2022-04-26 12:10:07	REV. NO: 1969
SCALE: 1:75	DRAWING SET
DRAWN BY: Auteurs	A128
CHECKED BY: Verificateur	

1 EAST ELEVATION
 A128 / 1:75

007-12-21-0128_002-02-21-00850