

SURVEYOR'S REAL PROPERTY REPORT
PART 1 Plan of
LOT 3 and PART OF LOT 4
REGISTERED PLAN 30
CITY OF OTTAWA

Surveyed by Annis, O'Sullivan, Vollebek Ltd.

Scale 1:200

Metric
 DISTANCES SHOWN ON THIS PLAN ARE IN METRES AND
 CAN BE CONVERTED TO FEET BY DIVIDING BY 0.3048

Surveyor's Certificate

- I CERTIFY THAT
 1. This survey and plan are correct and in accordance with the Survey Act, the Surveyors Act and the Land Titles Act and the regulations made under them.
- The survey was completed on the 20th day of July, 2018.

July 24, 2018
 Date

 Andrew J. Broxham
 Ontario Land Surveyor

PART 2
 THIS PLAN MUST BE READ IN CONJUNCTION WITH
 SURVEY REPORT DATED: JULY 24, 2018

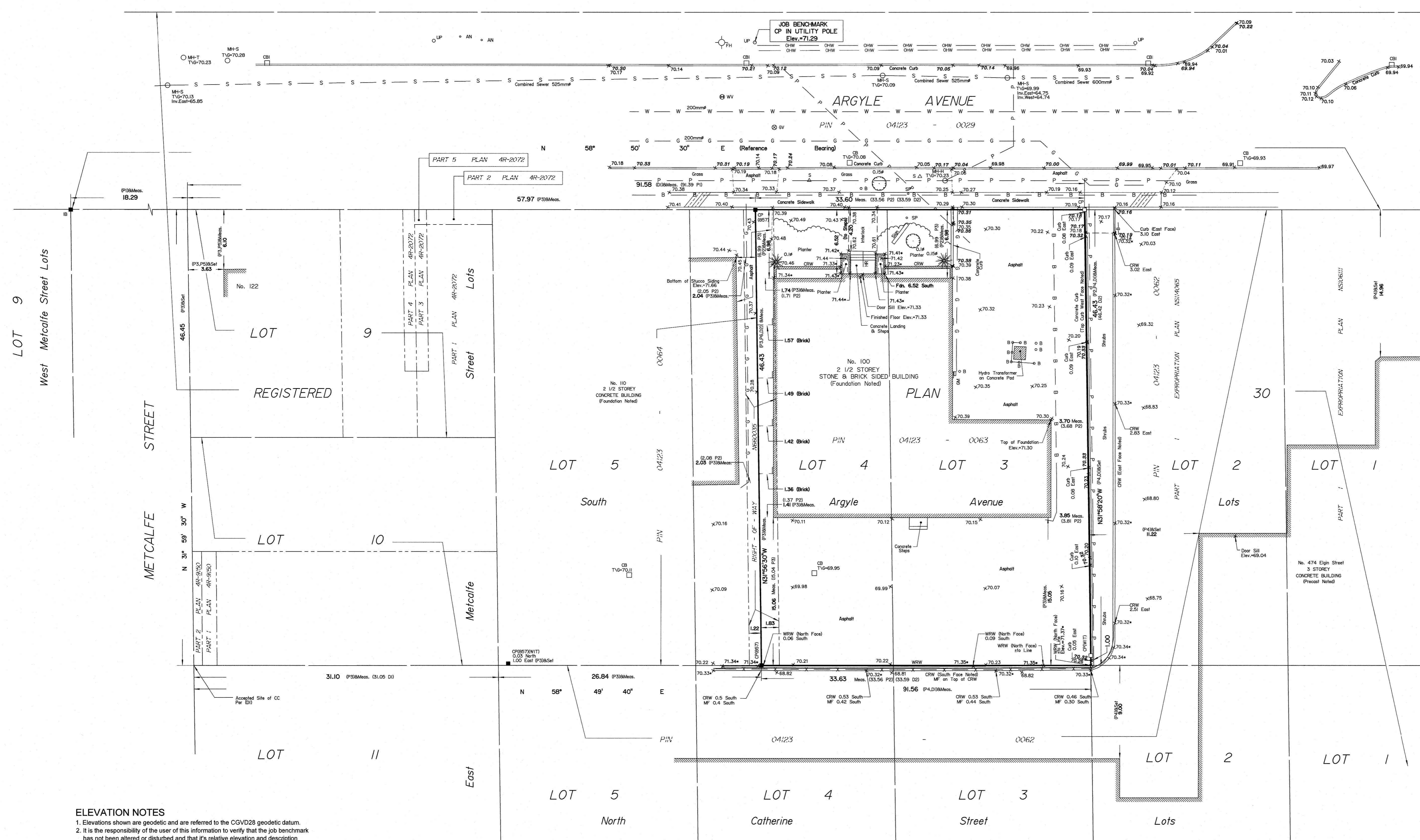
ANNIS, O'SULLIVAN, VOLLEBEK LTD. grants to
 Colonnade Bridge #24 (The Client), their solicitors,
 mortgagees, and other related parties, permission to use original, signed, sealed
 copies of the Surveyor's Real Property Report in transactions involving The Client.

Notes & Legend

Denotes	
□	Survey Monument Planted
■	Survey Monument Found
SIB	Standard Iron Bar
SSIB	Short Standard Iron Bar
IB	Iron Bar
CC	Cut Cross
CP	Concrete Pin
(WIT)	Witness
Meas.	Measured
(AOG)	Annis, O'Sullivan, Vollebek Ltd.
(PI)	Registered Plan 30
(P2)	(947) Plan & Field Notes January 4, 1983
(P3)	(857) Plan March 5, 2014
(P4)	(857) Plan October 16, 1981 (amended May 6, 1983)
(P5)	(1319) Plan April 13, 1978
(D1)	Inst. NS114065
(D2)	Inst. N660035
⊙ wv	Water Valve
⊙ sp	Water Stand Post
⊙ MH-S	Maintenance Hole (Sanitary)
⊙ MH-H	Maintenance Hole (Hydro)
⊙ MH-T	Maintenance Hole (Traffic)
— S —	Underground Combined Sewer
— W —	Underground Water
— P —	Underground Power
— G —	Underground Gas
— B —	Underground Bell
— OHW —	Overhead Wires
CRW	Concrete Retaining Wall
WRW	Wood Retaining Wall
□ CB	Catch Basin
□ CBI	Catch Basin Inlet
⊙ GV	Gas Valve
⊙ M	Gas Meter
⊙ B	Bollard
⊙ S	Sign
⊙ UP	Utility Pole
⊙ AN	Anchor
⊙ D	Diameter
+ 85.00	Location of Elevations
+ 85.00	Top of Concrete Curb Elevation
+ 85.00	Top of Wall Elevation
C/L	Centreline
—	Property Line
⊙	Deciduous Tree
⊙	Coniferous Tree
Inv.	Invert
T/G	Top of Gate
Fdn.	Foundation
⊙ FH	Fire Hydrant
MF	Metal Fence
HR	Hand Rail

ASSOCIATION OF ONTARIO
 LAND SURVEYORS
 PLAN SUBMISSION FORM
 2058210

 THIS PLAN IS NOT VALID UNLESS
 IT IS AN UNCORRECTED ORIGINAL
 COPY ISSUED BY THE SURVEYOR
 in accordance with
 Regulation 1026, Section 29 (3).



ELEVATION NOTES
 1. Elevations shown are geodetic and are referred to the CGVD28 geodetic datum.
 2. It is the responsibility of the user of this information to verify that the job benchmark has not been altered or disturbed and that it's relative elevation and description agrees with the information shown on this drawing.

UTILITY NOTES
 1. This drawing cannot be accepted as acknowledging all of the utilities and it will be the responsibility of the user to contact the respective utility authorities for confirmation.
 2. Only visible surface utilities were located.
 3. A field location of underground plant by the pertinent utility authority is mandatory before any work involving breaking ground, probing, excavating etc.
 4. Underground utilities and inverts in the limit of Argyle & Metcalfe Street are taken from City of Ottawa Engineering Plans F-12-10, F13-04 and 3257 Sheet 5 of 10 (revised July 2000).
 5. Underground Bell, Gas and Hydro services on part of Lots 2, 3 and 4 are shown as marked on ground by others.

Bearings are grid, derived from the southerly limit of Argyle Street show to be N56°53'30"E on plan by (857) dated March 5, 2014 and are referred to the Central Meridian of MTM Zone 9 (78°32' West Longitude) NAD-83 (original).

© Annis, O'Sullivan, Vollebek Ltd. 2018. "THIS PLAN IS PROTECTED BY COPYRIGHT"
ANNIS, O'SULLIVAN, VOLLEBEK LTD.
 14 Concourse Gate, Suite 500
 Nepean, Ont. K2E 7S2
 Phone: (613) 727-0850 / Fax: (613) 727-1079
 Email: nepean@aosvl.com
 Job No. 8926-B Colonnade P.L. 3 PL 30 T.D.