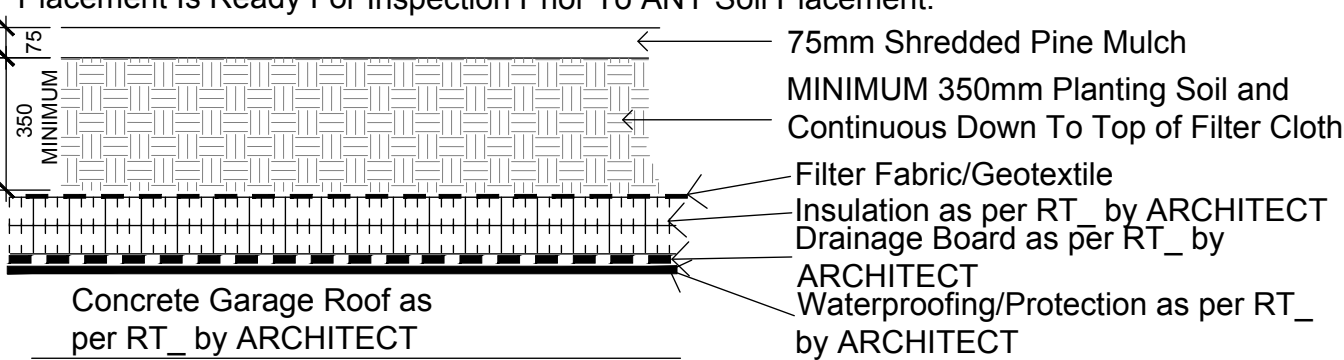
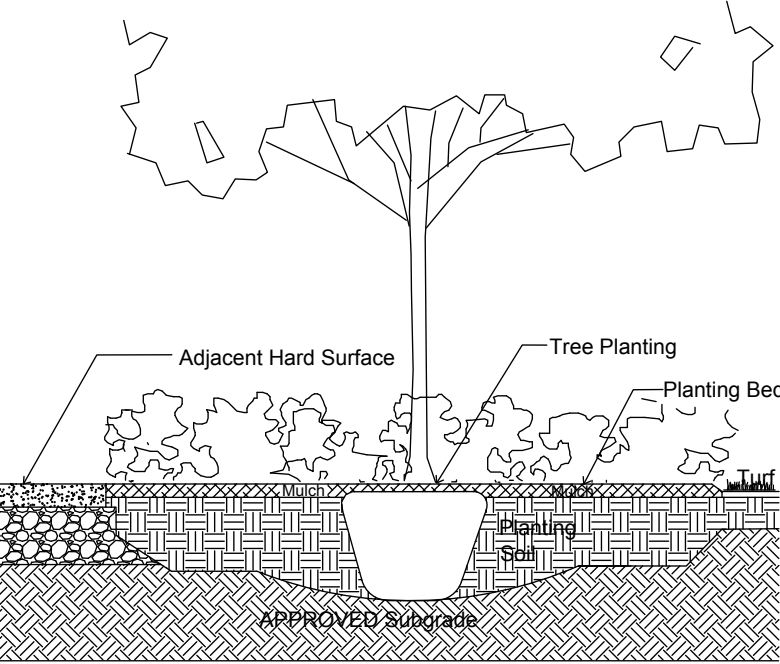


CALIPER B AND B TREES - 100 ARGYLE GJA INC.					
Code	Qty.	Botanical Name	Common Name	Size	Condition
GB	2	Ginkgo biloba	Maidenhair Tree	70mm cal	B + B specimen
GROUND COVER					
GM	100	Geranium macrorrhizum	Bigroot Geranium	9cm Pot	
GP	100	Geranium psilostemon 'Gerwat'	Rozanne Geranium	9cm Pot	

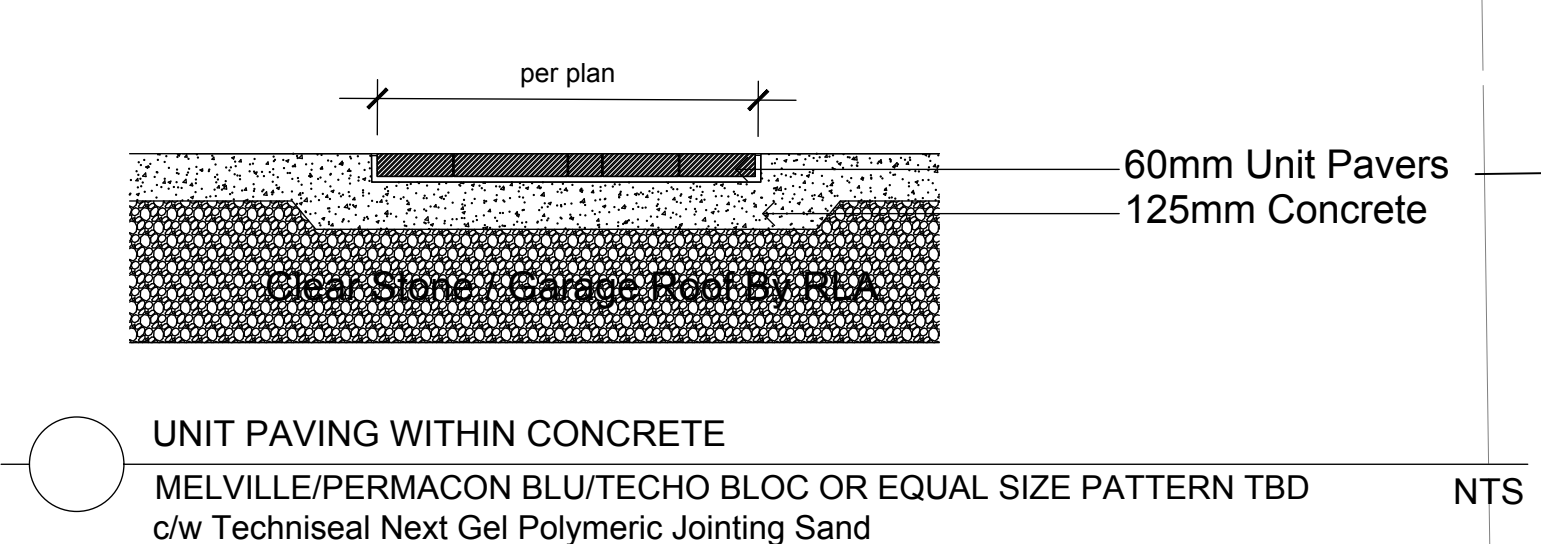
Ensure Filter Fabric is in Place over Insulation, with 500mm Overlap at Seams, and Continuous up and over any Upstands, Drains etc. Notify GJA INC. When Fabric Placement is Ready For Inspection Prior To ANY Soil Placement.



PLANTING ON INSULATED GARAGE ROOF NTS
 Drainage Board Must Be Provide/Installed Above Waterproofing & Below Insulation If/Where Soil Depths Exceed 350mm - use Commercial Screened Topsoil BELOW Planting Soil



TREE PLANTING IN PLANTING BED NTS

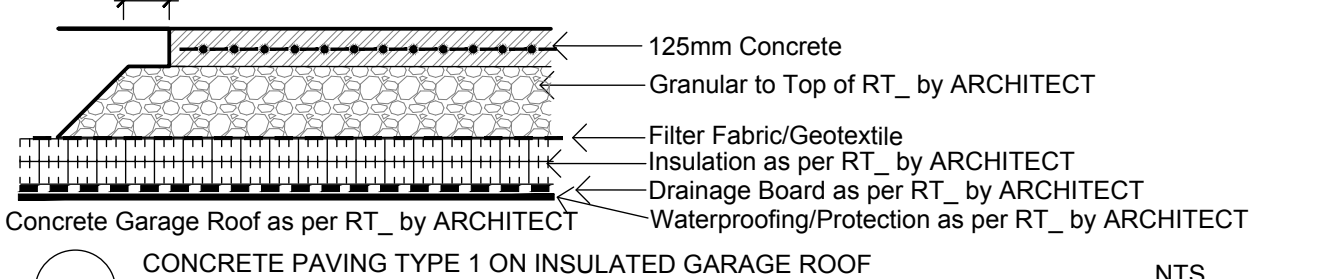


UNIT PAVING WITHIN CONCRETE NTS
 MELVILLE/PERMACON BLU/TECHO BLOC OR EQUAL SIZE PATTERN TBD c/w Techniseal Next Gel Polymeric Jointing Sand

GENERAL CONCRETE NOTES:
 ALL CONCRETE FINISHES TO BE APPROVED BY GJA LANDSCAPE ARCHITECT.

SAWCUT and EXPANSION JOINT LAYOUT FOR ALL AREAS TO BE MARKED ON SITE IN RED CHALK, REVIEWED, ADJUSTED AND APPROVED BY GJA LANDSCAPE ARCHITECT PRIOR TO ANY CONCRETE POURING / CUTTING.

TYPE 1
 35 MPa C1 125mm Thick, 6% Air Entrainment 6x6 Wire Mesh, Fibre Exp. Joints at all Hard Edges, Sawcut Control Joints (1" depth) as per plan +2.0m O.C. minimum c/w MAGNESIUM TROWEL FINISH - TOOL EDGE FIRST, THEN WIPE OFF TOOL MARKS WHILE APPLYING FINISH



CONCRETE PAVING TYPE 1 ON INSULATED GARAGE ROOF NTS
 Provide Shop Drawing for Proposed Expansion and Control Joint Layout for Approval

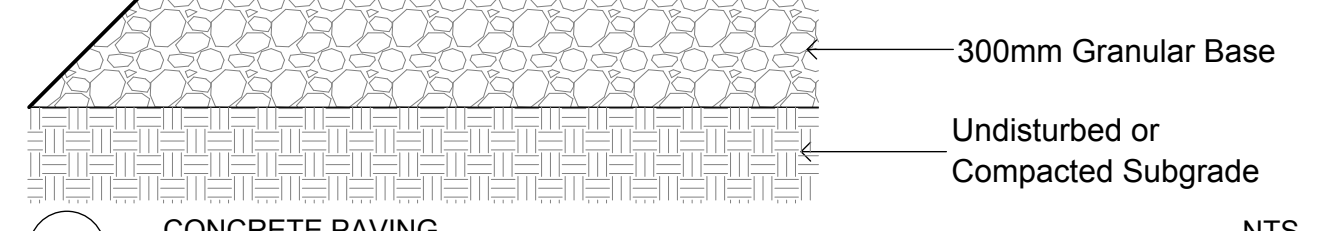
GENERAL CONCRETE NOTES:
 ALL CONCRETE FINISHES TO BE APPROVED BY GJA LANDSCAPE ARCHITECT.

SAWCUT LAYOUT FOR ALL AREAS TO BE MARKED ON SITE IN RED CHALK, REVIEWED, ADJUSTED AND APPROVED BY GJA LANDSCAPE ARCHITECT PRIOR TO ANY CUTTING.

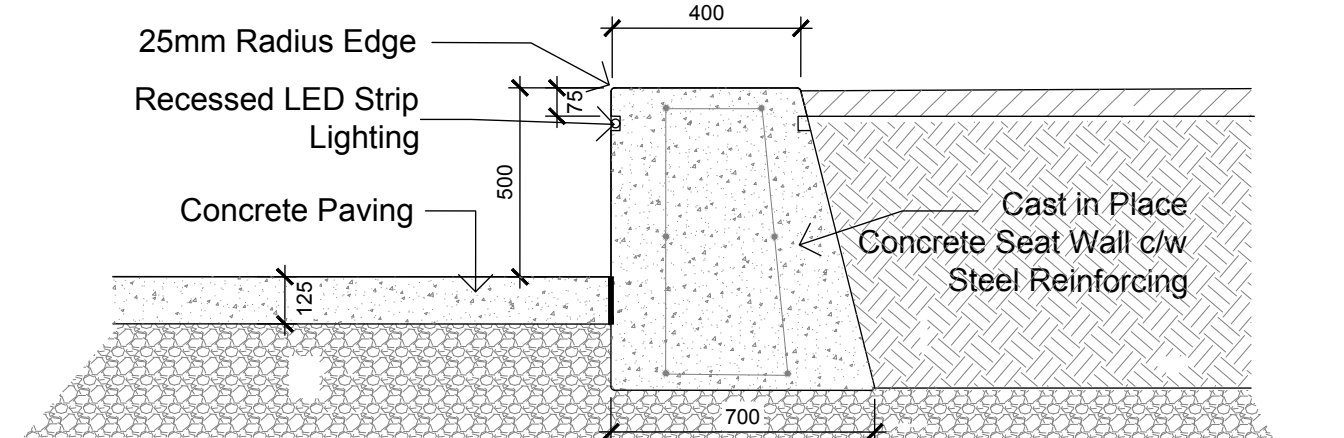
EXPANSION JOINT LAYOUT FOR ALL AREAS TO BE LAID OUT ON SITE, REVIEWED, ADJUSTED AND APPROVED BY GJA LANDSCAPE ARCHITECT PRIOR TO ANY CONCRETE POURING.

FINISH: TOOL EDGE FIRST, THEN WIPE OFF TOOL MARKS WHILE APPLYING FINISH

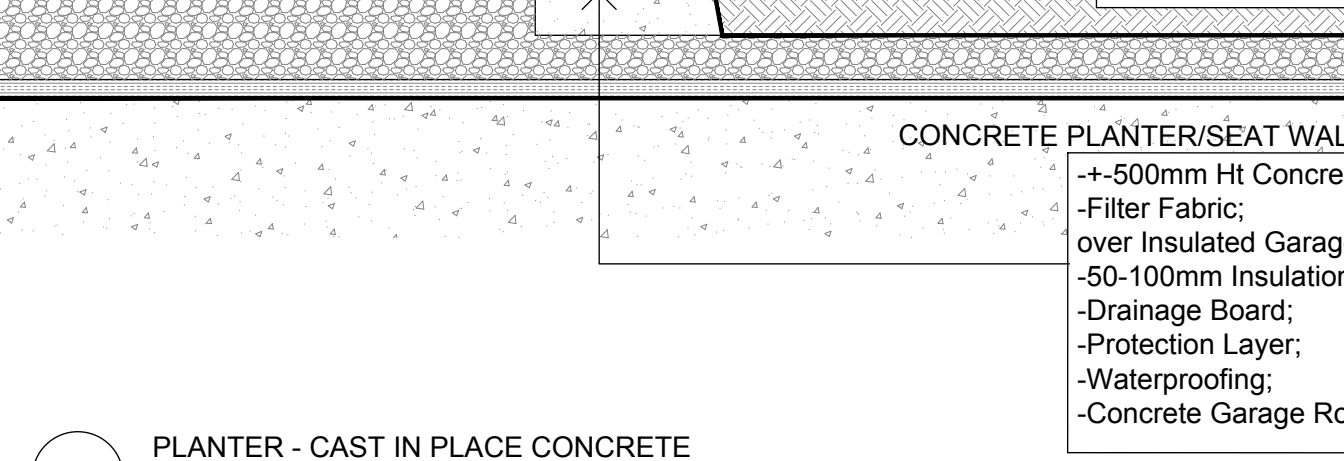
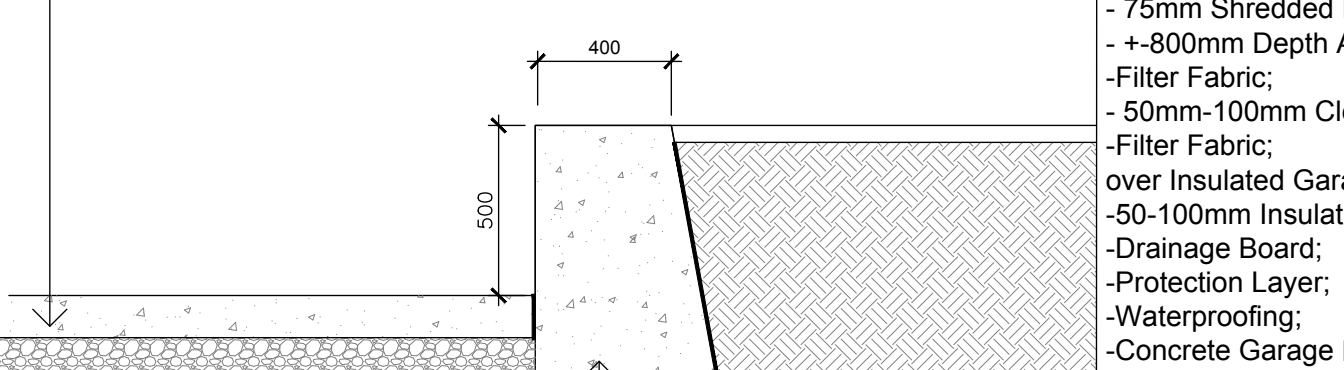
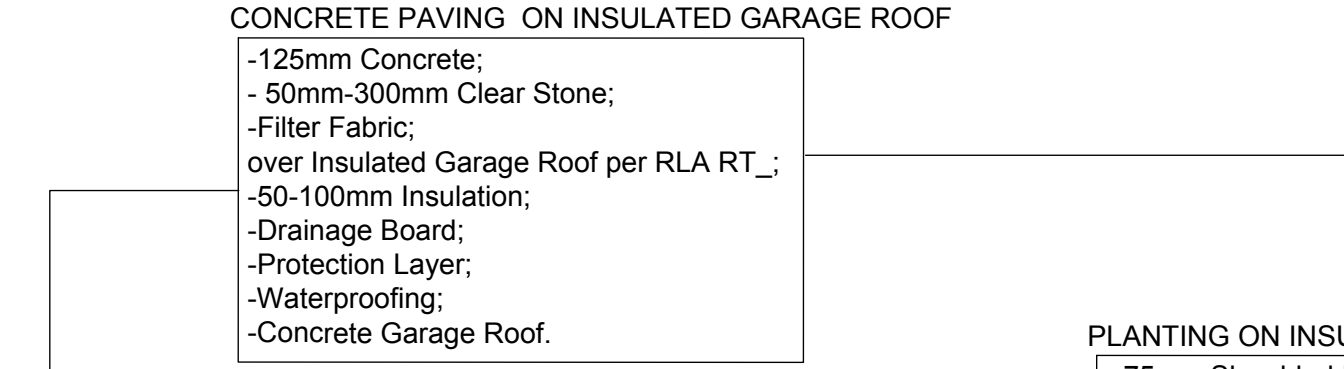
Concrete 125mm Thick, 32mpa, 6% Air Entrainment 6x6 Wire Mesh, Fibre Exp. Joints at all Hard Edges and 6m O.C. in Both Directions, Sawcut Control Joints (1" depth) 2.0m O.C. minimum



CONCRETE PAVING NTS
 32 MPA C2 c/w FLOAT FINISH - TOOL EDGE FIRST, THEN WIPE OFF TOOL MARKS WHILE APPLYING FINISH



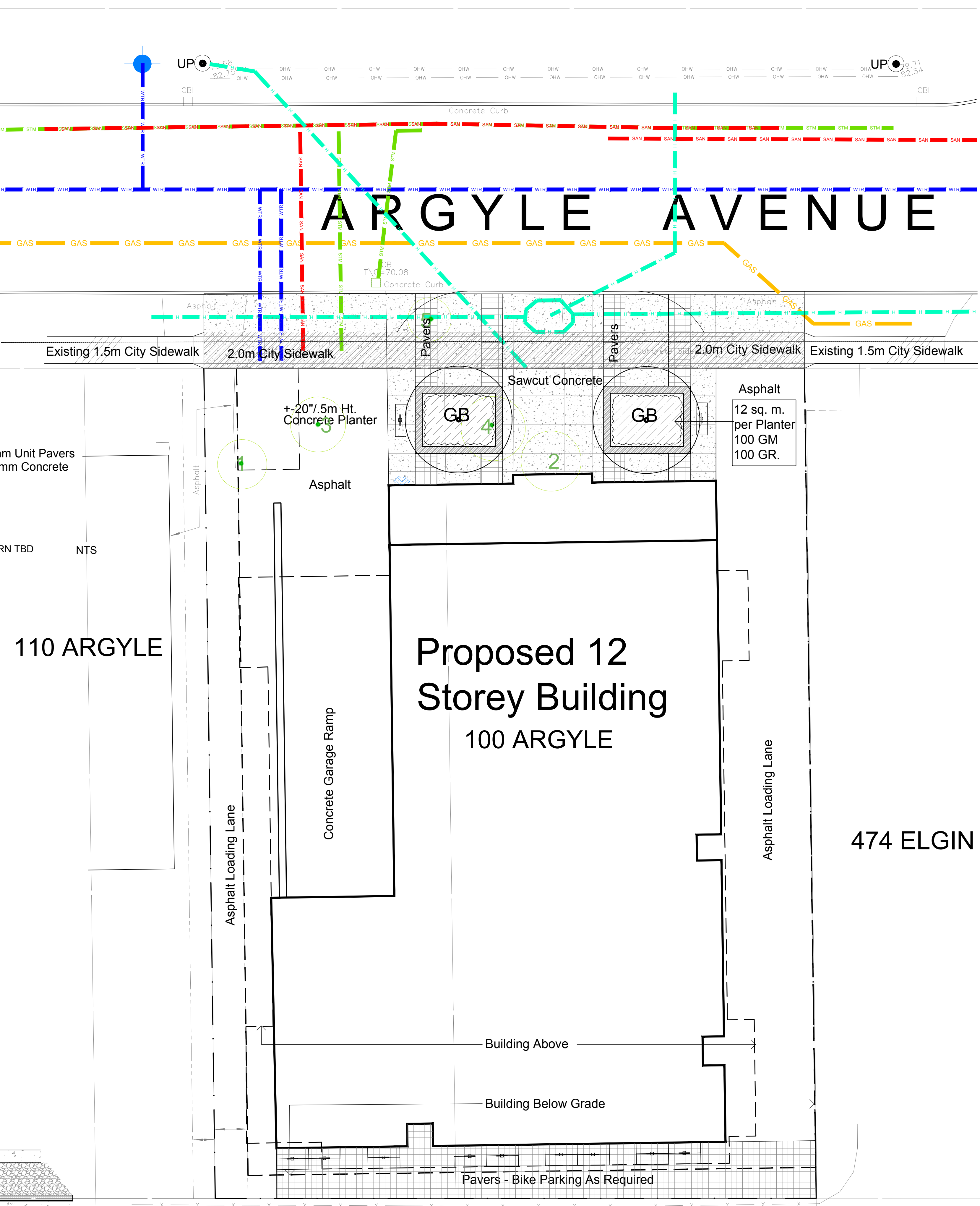
TYPICAL CONCRETE PLANTER / SEAT WALL AND PLANTING BED NTS
 Concrete Seat Wall, Supply Shop Drawings for Concrete Reinforcing & Recessed Strip Lighting. Use New Form Ply - for Quality "Form Strip Finish"



PLANTER - CAST IN PLACE CONCRETE NTS



Circum Bicycle Rack
 PS-76-101-TP - Circum Bike Rack
 Our Circum Bicycle Rack features a welded tubular and flat bar steel construction. It is available in your choice of Hauser's GTE powdercoat finishes, or Hauser's BLD Thermoplastic finishes.
 sales@hausersite.com
 800-268-7328
 hausersite.com



Drawing Remains the Property of/Copyright Reserved by Gino J. Aiello Landscape Architect. Do Not Use or Reproduce Without Approval of Gino J. Aiello.
NOT To Be Used For Construction **Unless** indicated by Revision: **"FOR LANDSCAPE CONSTRUCTION"**.
Contractor is Responsible for Verification of Site Locations of all Utilities. Report any Discrepancies Between Site and Drawing Immediately to Gino J. Aiello. Do NOT Proceed Until Clarified.
 TURF AREAS TO BE SOD C/W 150MM DEPTH TOPSOIL ON APPROVED SUBGRADE | SOD TO BE #1 GRADE TURFGRASS NURSERY SOD per NSGA - Fine Fescue/Kentucky Bluegrass Sod | PLANTING MIX TO BE APPROVED BY LANDSCAPE ARCHITECT | PLANT MATERIAL TO MEET CNLA STANDARDS/BE APPROVED BY LANDSCAPE ARCHITECT PRIOR TO PLANTING | ALL MATERIALS & WORK TO BE MAINTAINED UNTIL FINAL ACCEPTANCE. (MOWING TURF, WEEDING BEDS, WATERING TURF & PLANTS) & INCLUDE 1 YEAR WARRANTY FROM DATE OF FINAL ACCEPTANCE | PROVIDE WATERING OF ALL PLANT MATERIAL AS REQUIRED FOR PROPER ESTABLISHMENT, UNTIL END OF WARRANTY PERIOD | REFER TO CIVIL ENGINEER'S DRAWING FOR ELEVATIONS / GRADING |
 The Landscape Plan is to be read in conjunction with the grading, servicing, site and survey plan | Bare root material to be planted in season only | All plant material locations to be staked on site by the landscape contractor and checked by the landscape architect prior to planting | All trees to be preserved on or directly adjacent to the site will be protected | Plant material are to be installed a minimum of, 3.0m away from any part of any hydro transformer, 3.0m corridor between a fire hydrant and the curb, a 2.5m radius beside or behind a fire hydrant, 2.0m from any servicing/utility line or structure |

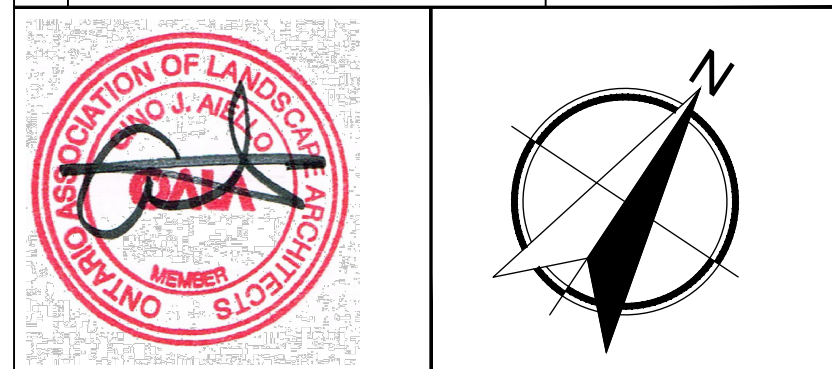
LANDSCAPE PLAN LEGEND

- CR Proposed Deciduous Tree
- 1* Existing Tree to be Removed
- Proposed Planting Bed
- Proposed Pavers
- Bike Rack
- Fire Hydrant
- FD Siamese Connection
- Light Standard Base

BELOW GRADE SERVICES REFER TO CIVIL /CUP

- U/G Water Service
- U/G Storm Service
- U/G Sanitary Service
- U/G Gas Service
- U/G TelCo Service
- U/G Hydro Service

No.	Revision	Date
2	SECOND SUBMISSION SPC	DECEMBER 21 2021
1	FIRST SUBMISSION SPC	AUGUST 13 2021
0	COORDINATION / REVIEW	JULY 2021



Property Owner: **100 ARGYLE CORPORATION**
 100 Argyle Avenue Ottawa K2B 1P6 613 225 8118

Gino J. Aiello | landscape architect GJALA.com
 GJA Inc. Gino@GJALA.com (613) 286 5130
 110 Dabury Road Unit # 9 | Ottawa Ontario | K2T 0C2

Project: **PROPOSED 12 STOREY APARTMENT BUILDING**
 100 ARGYLE AVENUE OTTAWA
 Drawing: **Landscape Plan**

Scale: 1:125
 City of Ottawa
 Dwg - #####

L1

D07-###

