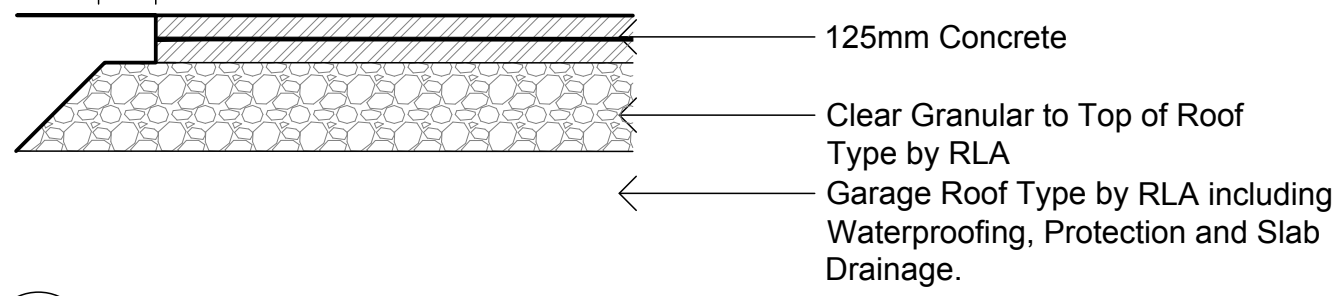


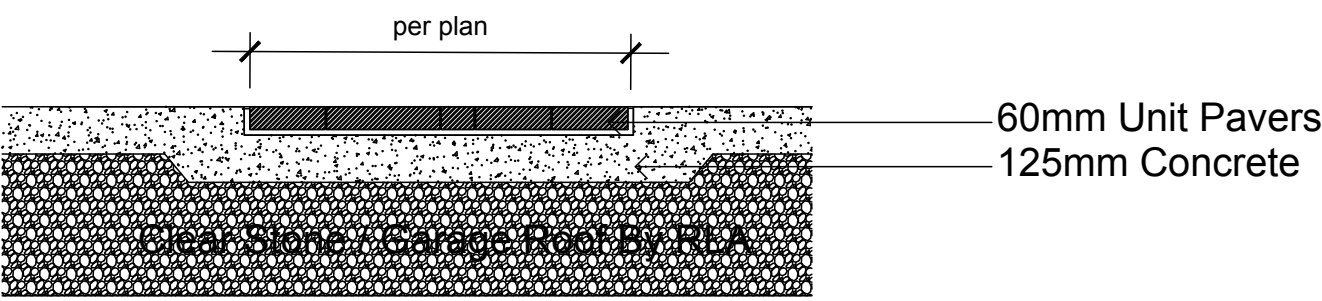
TYPE 1
35 MPa C1 125mm Thick, 6% Air Entrainment 6x6 Wire Mesh, Fibre Exp. Joints at all Hard Edges, Sawcut Control Joints (1" depth) as per plan. 2.0m O.C. minimum c/w WOOD FLOAT FINISH - TOOL EDGE FIRST, THEN WIPE OFF TOOL MARKS WHILE APPLYING FINISH

TYPE 2
35 MPa C1 125mm Thick, 14mm Peastone Aggregate, 6% Air Entrainment 6x6 Wire Mesh, Fibre Exp. Joints at all Hard Edges, Sawcut Control Joints (1" depth) as per plan. 2.0m O.C. minimum c/w MAGNESIUM FLOAT FINISH - TOOL EDGE FIRST, THEN WIPE OFF TOOL MARKS WHILE APPLYING FINISH, FOLLOWED BY MEDIUM SANDBLAST FINISH AFTER MINIMUM 24 HOURS CURING MAXIMUM 48 HOURS CURING.



CONCRETE PAVING TYPE 1 & TYPE 2

Contractor to Provide Shop Drawing for Proposed Expansion Joint and Control Joint Layout for Approval



UNIT PAVING WITHIN CONCRETE

MELVILLE/PERMACON BLU/TECHO BLOC OR EQUAL SIZE PATTERN TBD NTS
c/w Techniseal Next Gel Polymeric Jointing Sand

CALIPER B AND B TREES - 100 ARGYLE GJA INC.

Code	Qty.	Botanical Name	Common Name	Size	Condition
AC	8	Amelanchier canadensis	Tree Serviceberry	50mm cal	B + B specimen
GM	75	Geranium macrorrhizum	Bigroot Geranium		9cm Pot
GP	75	Geranium psilostemon 'Gerwat'	Rozanne Geranium		9cm Pot

1050 SERIES
MLST1050B-BH-PC

MATERIALS: The table frame is constructed from formed steel and the top employs 3/4" HDPC.
FINISH: All steel components are protected with a clear rust proofing. The Maglin Powdercoat System provides a durable finish on all metal surfaces.
INSTALLATION: The steel comes pre-assembled with boards. The legs have 9/16" holes for anchoring.
TO SPECIFY: Select MLST1050B-BH-PC
Choose: Powdercoat Color
HDPC Color

DIMENSIONS:
Height: 30" (762mm)
Depth: 15 1/2" (393mm)
Width: 48" (1219mm)

1050 SERIES
MLTB1050-BHN-PC

MATERIALS: The table frame is constructed from formed steel and the top employs 3/4" HDPC.
FINISH: All steel components are protected with a clear rust proofing. The Maglin Powdercoat System provides a durable finish on all metal surfaces.
INSTALLATION: The table is delivered pre-assembled. The legs have 9/16" holes for anchoring.
TO SPECIFY: Select MLTB1050-BHN-PC
Choose: Powdercoat Color
HDPC Color
Optional: Sandstone

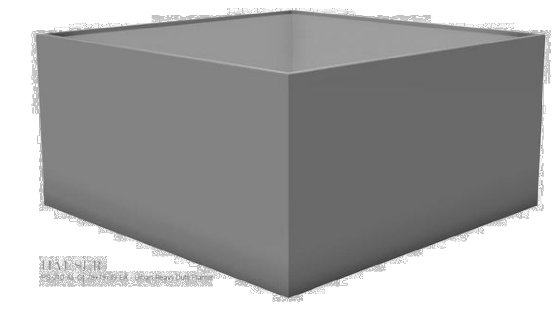
DIMENSIONS:
Height: 30" (762mm)
Depth: 15 1/2" (393mm)
Width: 70" (1778mm)

720 SERIES
MCCH720-M

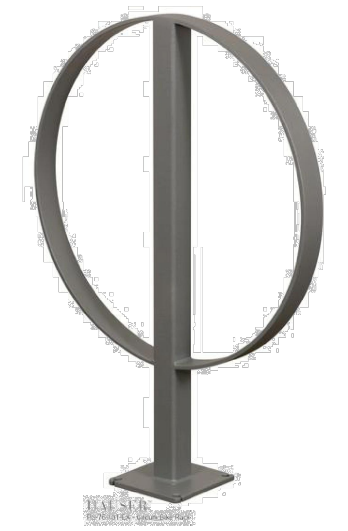
MATERIALS: The chair frame is constructed of laser cut and formed steel. The seat employs 3/4" HDPC.
FINISH: All steel components are protected with a clear rust proofing. The Maglin Powdercoat System provides a durable finish on all metal surfaces.
INSTALLATION: The chair is delivered pre-assembled.
TO SPECIFY: Select MCCH720-M
Choose: Powdercoat Color

DIMENSIONS:
Height: 38 1/2" (978mm)
Depth: 20 1/2" (519mm)
Width: 22 1/2" (571mm)

79" X 79" Urban Heavy Duty Planter
PS-210-HD-AL-PO-79x79x39 - Urban Heavy Duty Planter
The Urban Heavy Duty Planter features a heavy duty galvanized steel frame, aluminum clad powdercoated body and footrest base. Includes only floor with watering drain. It is available in any HauserKOTE powdercoat finish, and in a variety of custom sizes.



Circum Bicycle Rack
PS-76-101-TP - Circum Bike Rack
Our Circum Bicycle Rack features a welded tubular and flat bar steel construction. It is available in your choice of HauserKOTE powdercoat finishes, or HauserSHELD Thermoplastic finishes.



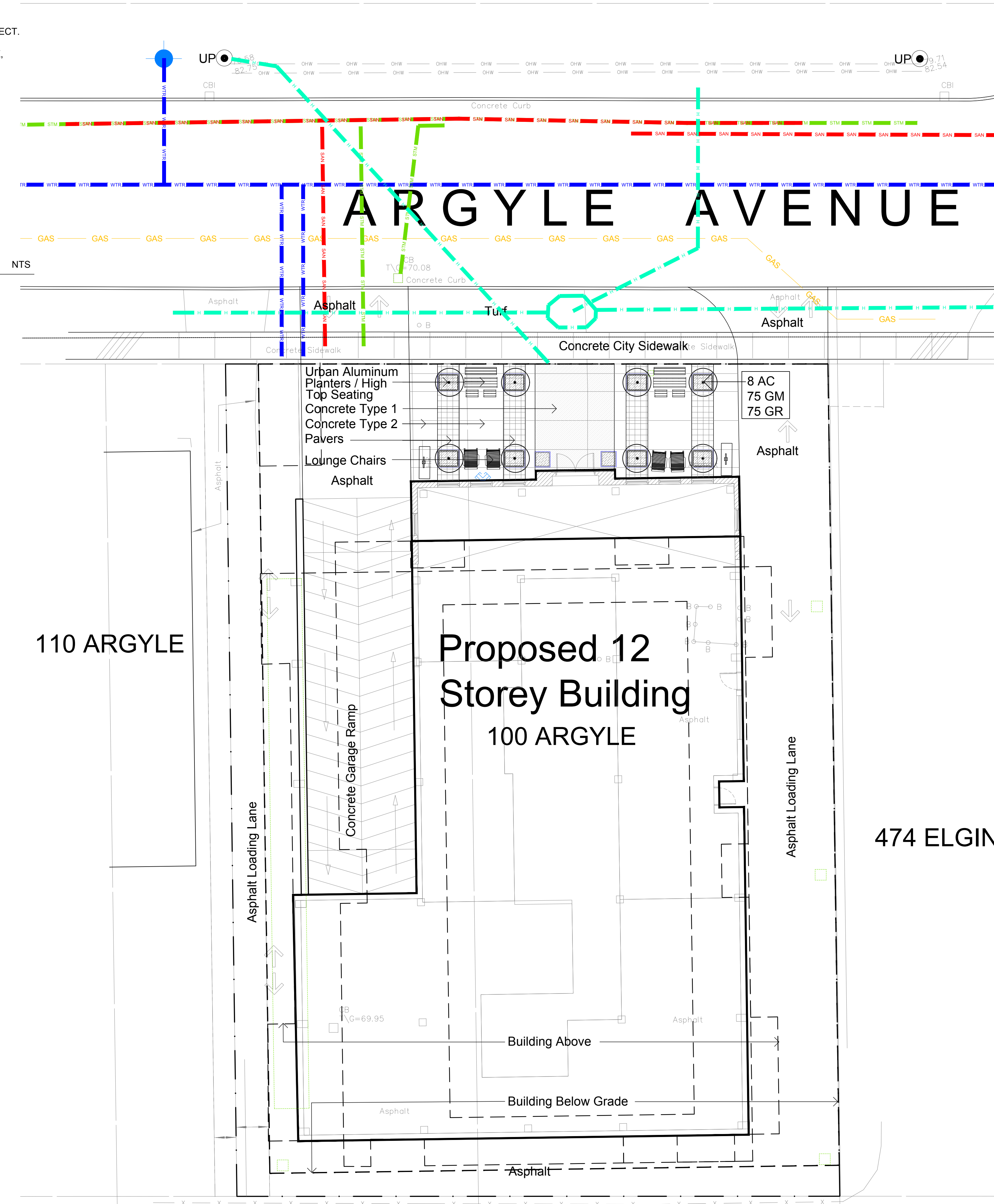
Depth: 2" (5.1 cm)
Diameter: 24" (61.0 cm)
Height: 37" (93.8 cm)
Weight: 21.7 lb (9.9 kg)

GENERAL CONCRETE NOTES:

ALL CONCRETE FINISHES TO BE APPROVED BY GJA LANDSCAPE ARCHITECT.

SAWCUT LAYOUT FOR ALL AREAS TO BE MARKED ON SITE IN RED CHALK, REVIEWED, ADJUSTED AND APPROVED BY GJA LANDSCAPE ARCHITECT - PRIOR TO ANY CUTTING.

EXPANSION JOINT LAYOUT FOR ALL AREAS TO BE LAID OUT ON SITE, REVIEWED, ADJUSTED AND APPROVED BY GJA LANDSCAPE ARCHITECT - PRIOR TO ANY CONCRETE POURING.



Drawing Remains the Property of/Copyright Reserved by Gino J. Aiello Landscape Architect. Do Not Use or Reproduce Without Approval of Gino J. Aiello. NOT TO Be Used For Construction Unless indicated by Revision: "FOR LANDSCAPE CONSTRUCTION". Contractor is Responsible for Verification of Site Locations of all Utilities. Report any Discrepancies Between Site and Drawing Immediately to Gino J. Aiello. Do NOT Proceed Until Clarified.
TURF AREAS TO BE SOD C/W 150MM DEPTH TOPSOIL ON APPROVED SUBGRADE | SOD TO BE #1 GRADE TURFGRASS NURSERY SOD per NSGA - Fine Fescue/Kentucky Bluegrass Sod | PLANTING MIX TO BE APPROVED BY LANDSCAPE ARCHITECT | PLANT MATERIAL TO MEET CNLA STANDARDS/BE APPROVED BY LANDSCAPE ARCHITECT PRIOR TO PLANTING | ALL MATERIALS & WORK TO BE MAINTAINED UNTIL FINAL ACCEPTANCE. (MOWING TURF, WEEDING BEDS, WATERING TURF & PLANTS) & INCLUDE 1 YEAR WARRANTY FROM DATE OF FINAL ACCEPTANCE | PROVIDE WATERING OF ALL PLANT MATERIAL AS REQUIRED FOR PROPER ESTABLISHMENT, UNTIL END OF WARRANTY PERIOD | REFER TO CIVIL ENGINEER'S DRAWING FOR ELEVATIONS / GRADING |
The Landscape Plan is to be read in conjunction with the grading, servicing, site and survey plan | Bare root material to be planted in season only | All plant material locations to be staked on site by the landscape contractor and checked by the landscape architect prior to planting | All trees to be preserved on or directly adjacent to the site will be protected | Plant material are to be installed a minimum of, 3.0m away from any part of any hydro transformer, 3.0m corridor between a fire hydrant and the curb, a 2.5m radius beside or behind a fire hydrant, 2.0m from any servicing/utility line or structure |

LANDSCAPE PLAN LEGEND

- Proposed Deciduous Tree
- Proposed Planting Bed
- Proposed Pavers
- Bike Rack (Anchor to Concrete)
- Fire Hydrant
- FD Siamese Connection
- Light Standard Base
- BELOW GRADE SERVICES REFER TO CIVIL /CUP**
- U/G Water Service
- U/G Storm Service
- U/G Sanitary Service
- U/G Gas Service
- U/G TelCo Service
- U/G Hydro Service
- O/H Hydro Service

1	FIRST SUBMISSION SPC	AUGUST 13 2021
0	COORDINATION / REVIEW	JULY 2021
No.	Revision	Date

Property Owner: **100 ARGYLE CORPORATION**
100 Argyle Avenue Ottawa K2B 1P6 613 225 8118

Gino J. Aiello | landscape architect | GJALA.com
GJA Inc. | Gino@GJALA.com (613) 852 1343
110 Dabury Road Unit # 9 | Ottawa Ontario | K2T 0C2

Project: **PROPOSED 12 STOREY APARTMENT BUILDING**
100 ARGYLE AVENUE OTTAWA

Drawing: **Landscape Plan**

Scale: 1:125
City of Ottawa
Dwg - #####

L1

D07-###

