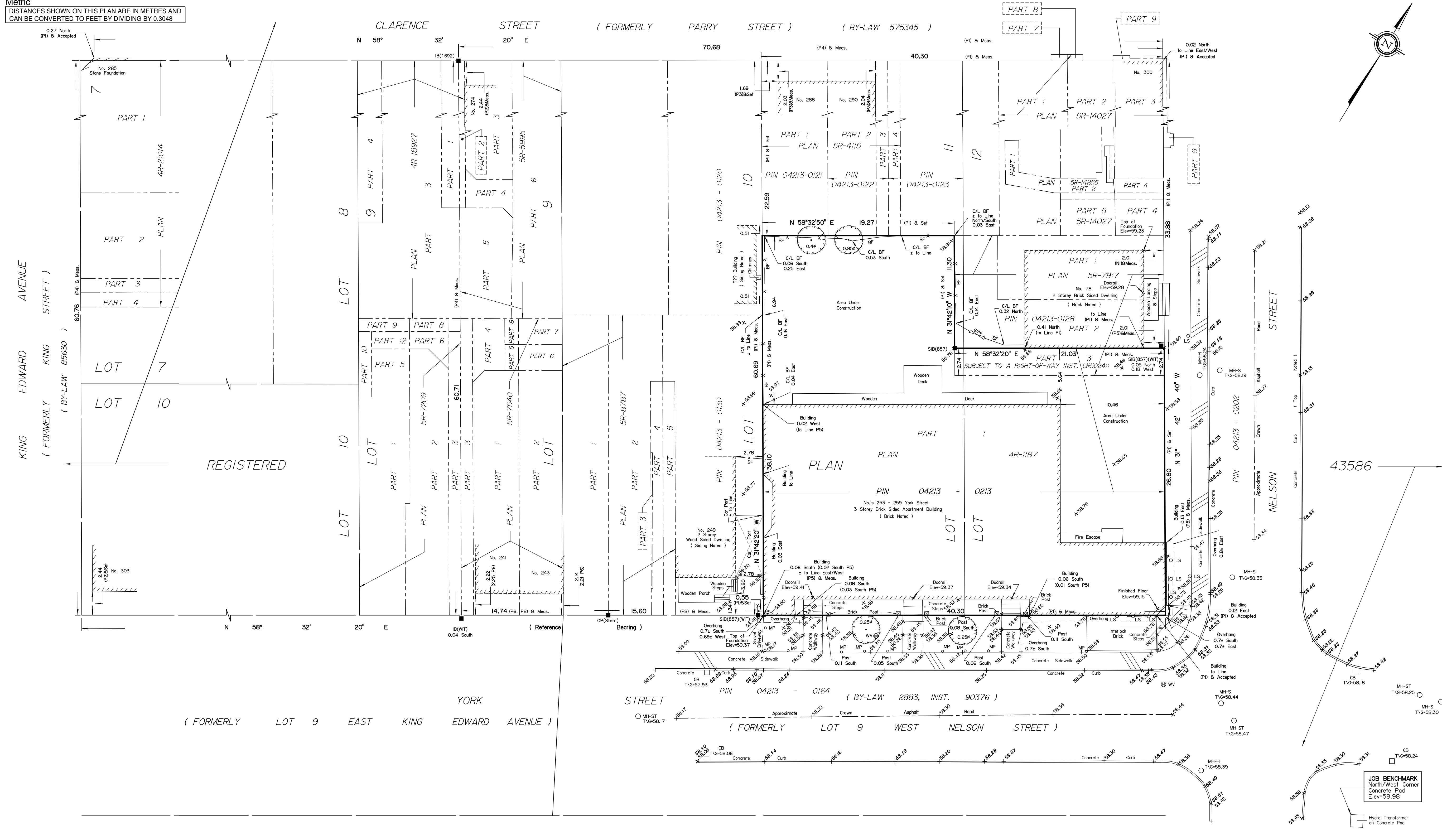


Metric
DISTANCES SHOWN ON THIS PLAN ARE IN METRES AND
CAN BE CONVERTED TO FEET BY DIVIDING BY 0.3048



DRAFT SURVEYOR'S REAL PROPERTY REPORT
PART 1 Plan of
PART OF LOTS 11 And 12
(South Clarence Street)
REGISTERED PLAN 43586
CITY OF OTTAWA

Surveyed by Annis, O'Sullivan, Vollebek Ltd.
 Scale 1 : 200



Surveyor's Certificate
 I CERTIFY THAT:
 1. This survey and plan are correct and in accordance with the Surveys Act, the Surveyors Act and the Land Titles Act and the regulations made under them.
 2. The survey was completed on the 11th day of April, 2019.

Date _____ Katherine M. Sonier
 Ontario Land Surveyor

PART 2
 THIS PLAN MUST BE READ IN CONJUNCTION WITH
 SURVEY REPORT DATED: MAY 3, 2019

ANNIS, O'SULLIVAN, VOLLEBEK LTD. grants to
 Smart Living Properties ("The Client"), their solicitors,
 mortgages, and other related parties, permission to use original, signed, sealed
 copies of the Surveyor's Real Property Report in transactions involving The Client.

Notes & Legend

□	Denotes	Survey Monument Planted
■	Survey Monument Found	
SIB	Standard Iron Bar	
SSIB	Short Standard Iron Bar	
IB	Iron Bar	
CP	Concrete Pin	
(WIT)	Witness	
(AOG)	Annis, O'Sullivan, Vollebek Ltd.	
Meas.	Measured	
(P1)	Plan 4R-1187	
(P2)	Plan 5R-3373	
(P3)	Plan 5R-4115	
(P4)	Plan 5R-5995	
(P5)	(857) Plan, December 4, 1974	
(P6)	Plan 5R-4250	
(P7)	(OTT) Plan, August 1, 1986	
(P8)	Plan 5R-8787	
(N1)	(857) Field Notes, December 4, 1974	
○ MH+ST	Maintenance Hole (Storm Sewer)	
○ MH-S	Maintenance Hole (Sanitary)	
○ MH+H	Maintenance Hole (Hydro)	
□ CB	Catch Basin	
○ WV	Water Valve	
○ LS	Light Standard	
○	Deciduous Tree	
○ MP	Metal Post	
BF	Board Fence	
Ø	Diameter	
+ 65.00	Location of Elevations	
+ 65.00	Top of Concrete Curb Elevation	
T/G	Top of Grate	
C/L	Centreline	

For bearing comparisons, a rotation of 0°44'41" counter-clockwise was applied to bearings on plan P1.

Bearings are grid and are referred to the Central Meridian of MTM Zone 9 (76°30' West Longitude) NAD-83 (original).

ELEVATION NOTES
 1. Elevations shown are geodetic and are referred to the CGVD28 geodetic datum.
 2. It is the responsibility of the user of this information to verify that the job benchmark has not been altered or disturbed and that it's relative elevation and description agrees with the information shown on this drawing.

UTILITY NOTES
 1. This drawing cannot be accepted as acknowledging all of the utilities and it will be the responsibility of the user to contact the respective utility authorities for confirmation.
 2. Only visible surface utilities were located.
 3. A field location of underground plant by the pertinent utility authority is mandatory before any work involving breaking ground, probing, excavating etc.

ASSOCIATION OF ONTARIO
 LAND SURVEYORS
 PLAN SUBMISSION FORM

THIS PLAN IS NOT VALID UNLESS
 IT IS AN EMBOSSED ORIGINAL
 COPY ISSUED BY THE SURVEYOR
 in accordance with
 Regulation 1026, Section 29 (3).

ANNIS, O'SULLIVAN, VOLLEBEK LTD.
 14 Concourse Gate, Suite 500
 Nepean, Ont. K2E 7S6
 Phone: (613) 727-0850 / Fax: (613) 727-1079
 Email: nepean@annisd.com

Ontario
 Land Surveyors

JOB BENCHMARK
 North/West Corner
 Concrete Pod
 Elev=58.98

Hydro Transformer
 on Concrete Pod