




Legend / légende

- EXISTING TREES
- SMALL DECIDUOUS TREE (REFER TO PLANTING SCHEDULE FOR SPECIES AND QUANTITIES)
- MEDIUM DECIDUOUS TREE (REFER TO PLANTING SCHEDULE FOR SPECIES AND QUANTITIES)
- LARGE DECIDUOUS TREE (REFER TO PLANTING SCHEDULE FOR SPECIES AND QUANTITIES)
- CONIFEROUS TREES IN CONTINUOUS MULCHED BEDS (REFER TO PLANTING SCHEDULE FOR SPECIES AND QUANTITIES)
- GROUND COVER PLANTING
- SHRUB AND PERENNIAL PLANTING BEDS (REFER TO PLANTING SCHEDULE)
- 135mm TOPSOIL AND SOD
- RIVER ROCK
- WOOD BOARD FENCE (REFER ARCHITECTURAL DRAWINGS)
- SNOW STORAGE AREAS

| | | |
|-------|------------------------------|------------|
| 02 | Re-issued for SPA | 2022/03/01 |
| 01 | Issued for SPA | 2021/09/01 |
| 00 | Issued for Client Review | 2021/08/25 |
| rev'n | description / la description | yyyy/mm/dd |

FOTENN Planning + Design
396 Cooper Street, Suite 300
Ottawa, ON, CANADA K2P 2H7
613.730.5709
fotenn.com

north / le nord

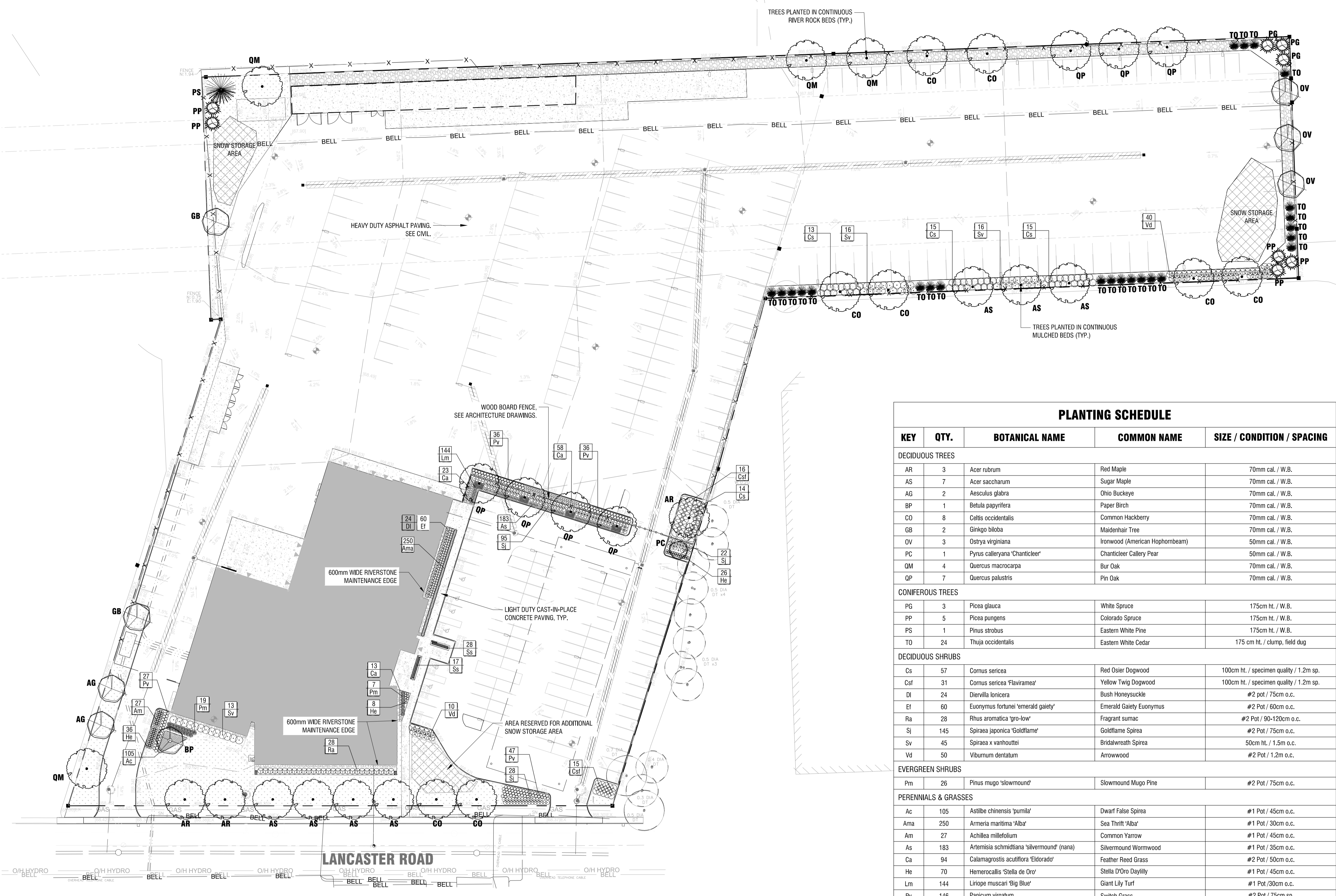


stamp / le cachet

project / projet
ENBRIDGE OTTAWA OPERATIONS CENTRE
2571 LANCASTER ROAD

drawing / dessin
LANDSCAPE & PLANTING PLAN
designed / conçu
KA / SP
drawn / dessiné
SP / SG
reviewed / examiné
KA
date
project number / No. du projet

drawing number / No. du dessin
L1 of 2
#18602



| PLANTING SCHEDULE | | | | |
|---------------------------------|------|---|---------------------------------|---|
| KEY | QTY. | BOTANICAL NAME | COMMON NAME | SIZE / CONDITION / SPACING |
| DECIDUOUS TREES | | | | |
| AR | 3 | <i>Acer rubrum</i> | Red Maple | 70mm cal. / W.B. |
| AS | 7 | <i>Acer saccharum</i> | Sugar Maple | 70mm cal. / W.B. |
| AG | 2 | <i>Aesculus glabra</i> | Ohio Buckeye | 70mm cal. / W.B. |
| BP | 1 | <i>Betula papyrifera</i> | Paper Birch | 70mm cal. / W.B. |
| CO | 8 | <i>Celtis occidentalis</i> | Common Hackberry | 70mm cal. / W.B. |
| GB | 2 | <i>Ginkgo biloba</i> | Maidenhair Tree | 70mm cal. / W.B. |
| OV | 3 | <i>Ostrya virginiana</i> | Ironwood (American Hophornbeam) | 50mm cal. / W.B. |
| PC | 1 | <i>Pyrus calleryana</i> 'Chanticleer' | Chanticleer Callery Pear | 50mm cal. / W.B. |
| QM | 4 | <i>Quercus macrocarpa</i> | Bur Oak | 70mm cal. / W.B. |
| QP | 7 | <i>Quercus palustris</i> | Pin Oak | 70mm cal. / W.B. |
| CONIFEROUS TREES | | | | |
| PG | 3 | <i>Picea glauca</i> | White Spruce | 175cm ht. / W.B. |
| PP | 5 | <i>Picea pungens</i> | Colorado Spruce | 175cm ht. / W.B. |
| PS | 1 | <i>Pinus strobus</i> | Eastern White Pine | 175cm ht. / W.B. |
| TO | 24 | <i>Thuja occidentalis</i> | Eastern White Cedar | 175 cm ht. / clump, field dug |
| DECIDUOUS SHRUBS | | | | |
| Cs | 57 | <i>Cornus sericea</i> | Red Osier Dogwood | 100cm ht. / specimen quality / 1.2m sp. |
| Csf | 31 | <i>Cornus sericea</i> 'Flaviramea' | Yellow Twig Dogwood | 100cm ht. / specimen quality / 1.2m sp. |
| DI | 24 | <i>Diervilla lonicera</i> | Bush Honeysuckle | #2 pot / 75cm o.c. |
| Ef | 60 | <i>Euonymus fortunei</i> 'emerald gaiety' | Emerald Gaiety Euonymus | #2 Pot / 60cm o.c. |
| Ra | 28 | <i>Rhus aromatica</i> 'gro-low' | Fragrant sumac | #2 Pot / 90-120cm o.c. |
| Sj | 145 | <i>Spiraea japonica</i> 'Goldflame' | Goldflame Spirea | #2 Pot / 75cm o.c. |
| Sv | 45 | <i>Spiraea x vanhouttei</i> | Bridalwreath Spirea | 50cm ht. / 1.5m o.c. |
| Vd | 50 | <i>Viburnum dentatum</i> | Arrowwood | #2 Pot / 1.2m o.c. |
| EVERGREEN SHRUBS | | | | |
| Pm | 26 | <i>Pinus mugo</i> 'slowmound' | Slowmound Mugo Pine | #2 Pot / 75cm o.c. |
| PERENNIALS & GRASSES | | | | |
| Ac | 105 | <i>Astilbe chinensis</i> 'pumila' | Dwarf False Spirea | #1 Pot / 45cm o.c. |
| Ama | 250 | <i>Armeria maritima</i> 'Alba' | Sea Thrift 'Alba' | #1 Pot / 30cm o.c. |
| Am | 27 | <i>Achillea millefolium</i> | Common Yarrow | #1 Pot / 45cm o.c. |
| As | 183 | <i>Artemisia schmidtiana</i> 'Silvermound' (nana) | Silvermound Wormwood | #1 Pot / 35cm o.c. |
| Ca | 94 | <i>Calamagrostis acutiflora</i> 'Eldorado' | Feather Reed Grass | #2 Pot / 50cm o.c. |
| He | 70 | <i>Hemerocallis</i> 'Stella de Oro' | Stella D'Oro Daylily | #1 Pot / 45cm o.c. |
| Lm | 144 | <i>Liriope muscari</i> 'Big Blue' | Giant Lily Turf | #1 Pot / 30cm o.c. |
| Pv | 146 | <i>Panicum virgatum</i> | Switch Grass | #2 Pot / 75cm sp. |
| Ss | 45 | <i>Schizachyrium Scoparium</i> 'Prairie Blues' | Little Bluestem 'Prairie Blues' | #1 Pot / 30cm o.c. |

1 LANDSCAPE PLAN
L1 1:500

PRELIMINARY
NOT FOR CONSTRUCTION

THIS PLAN IS APPROVED BY THE CITY OF OTTAWA UNDER SECTION 41 OF THE PLANNING ACT THIS 28 DAY OF SEPTEMBER, 2022.



LILY XU, MCIP, RPP, MANAGER
DEVELOPMENT REVIEW SOUTH
PLANNING, INFRASTRUCTURE AND ECONOMIC
DEVELOPMENT DEPARTMENT, CITY OF OTTAWA

PLOT INFORMATION: DWG NAME: P:\PROJECTS\18602\18602-01\LANDSCAPE\18602-01-01-01.dwg PLOT DATE: 2022-09-01 5:46:32 PM SHEET SIZE: 600x900mm PLOT DATE: 2022-09-01 5:46:32 PM PLOTED BY: Susan Lamwood LAST SAVED BY: gmo

NOTES:

DO NOT SCALE DRAWINGS;

NOTES ARE APPLICABLE TO ALL DRAWINGS IN THE SET;

Fotenn Consultants Inc. IS NOT RESPONSIBLE FOR ACCURACY OF BASE INFORMATION;

REFER TO CIVIL ENGINEERING DRAWINGS FOR GRADING & SITE SERVICING INFORMATION;

THE CONTRACTOR IS RESPONSIBLE FOR CONFIRMING SITE CONDITIONS AND REPORTING ANY DISCREPANCIES TO THE LANDSCAPE ARCHITECT;

THE CONTRACTOR IS RESPONSIBLE FOR CONFIRMING EXACT LOCATIONS OF ALL UNDERGROUND SERVICES AND OBTAINING CLEARANCE FROM ALL APPLICABLE UTILITIES. PROPOSED WORKS FOUND TO BE IN CONFLICT WITH UNDERGROUND SERVICES MAY BE ADJUSTED AT THE DIRECTION OF THE LANDSCAPE ARCHITECT;

LANDSCAPE ELEMENTS SHOWN ARE SUBJECT TO THE FINAL LOCATION OF UNDERGROUND SERVICES AND UTILITIES;

DO NOT INSTALL TREES ON PROPERTY / LOT LINES OR WITHIN DRAINAGE EASEMENTS;

PERFORM WORK IN ACCORDANCE WITH DETAILS AND SPECIFICATIONS;

ALL PLANT MATERIAL SHALL BE No. 1 NURSERY STOCK AND SHALL MEET OR EXCEED THE SPECIFICATION OF THE Canadian Standards for Nursery Stock, AS PUBLISHED BY THE Canadian Nursery Landscape Association;

SPECIES SUBSTITUTIONS ARE NOT PERMITTED WITHOUT PRIOR WRITTEN APPROVAL OF THE LANDSCAPE ARCHITECT;

ALL UN-PAVED SURFACES TO RECEIVE 150mm DEPTH TOPSOIL & SOD.

STANDARDS FOR TREE PLANTING:

NO PLANTING ON CORNERS OR ANYWHERE WHERE IT WOULD CREATE A SIGHT LINE CONCERN;

MAINTAIN A MINIMUM DISTANCE OF 7.5m FROM ALL BUILDINGS;

MAINTAIN A MINIMUM DISTANCE OF 2.5m FROM THE CURB FOR DECIDUOUS TREES AND 4.5m FOR CONIFEROUS TREES;

MAINTAIN A MINIMUM DISTANCE OF 1.5m FOR DECIDUOUS (4.5m FOR CONIFERS) FROM ANY SIDEWALK OR PRIVATE WALKWAY;

MAINTAIN A MINIMUM DISTANCE OF 1.2m FROM ALL DRIVEWAYS;

MAINTAIN A MINIMUM DISTANCE OF 2.5m FROM COMMUNITY MAILBOXES, LIGHT STANDARDS, FIRE HYDRANTS AND NO PLANTING IN FRONT OF HYDRANTS;

MAINTAIN A MINIMUM DISTANCE OF 3.0m FROM ALL HYDRO TRANSFORMERS;

MAINTAIN A MINIMUM DISTANCE OF 1.0m FROM ALL UNDERGROUND SERVICES;

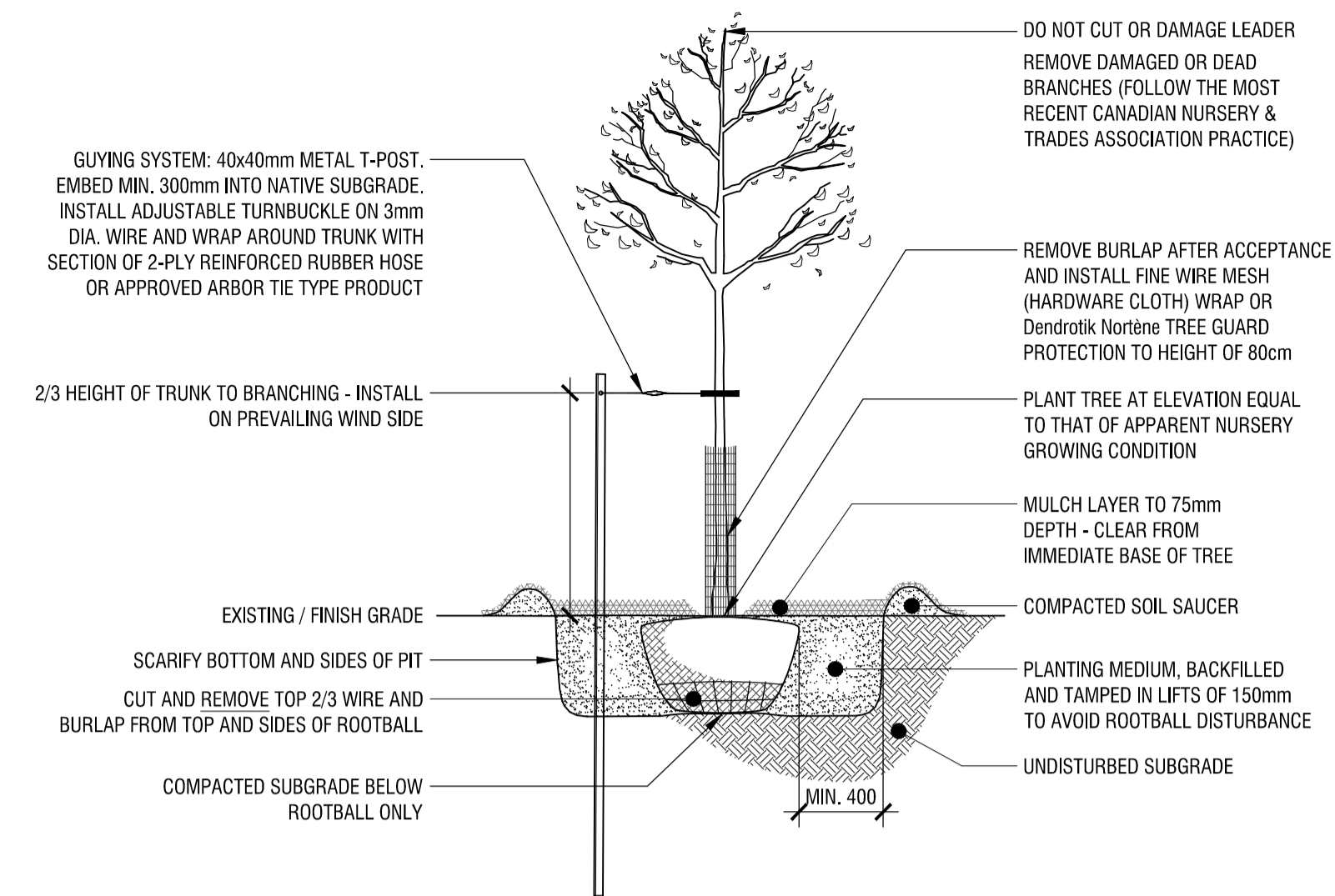
MAINTAIN A MINIMUM DISTANCE OF 1.0m FROM ALL BELL AND CABLE BOXES;

MAINTAIN A MINIMUM DISTANCE OF 10.0 FROM BUS SHELTERS

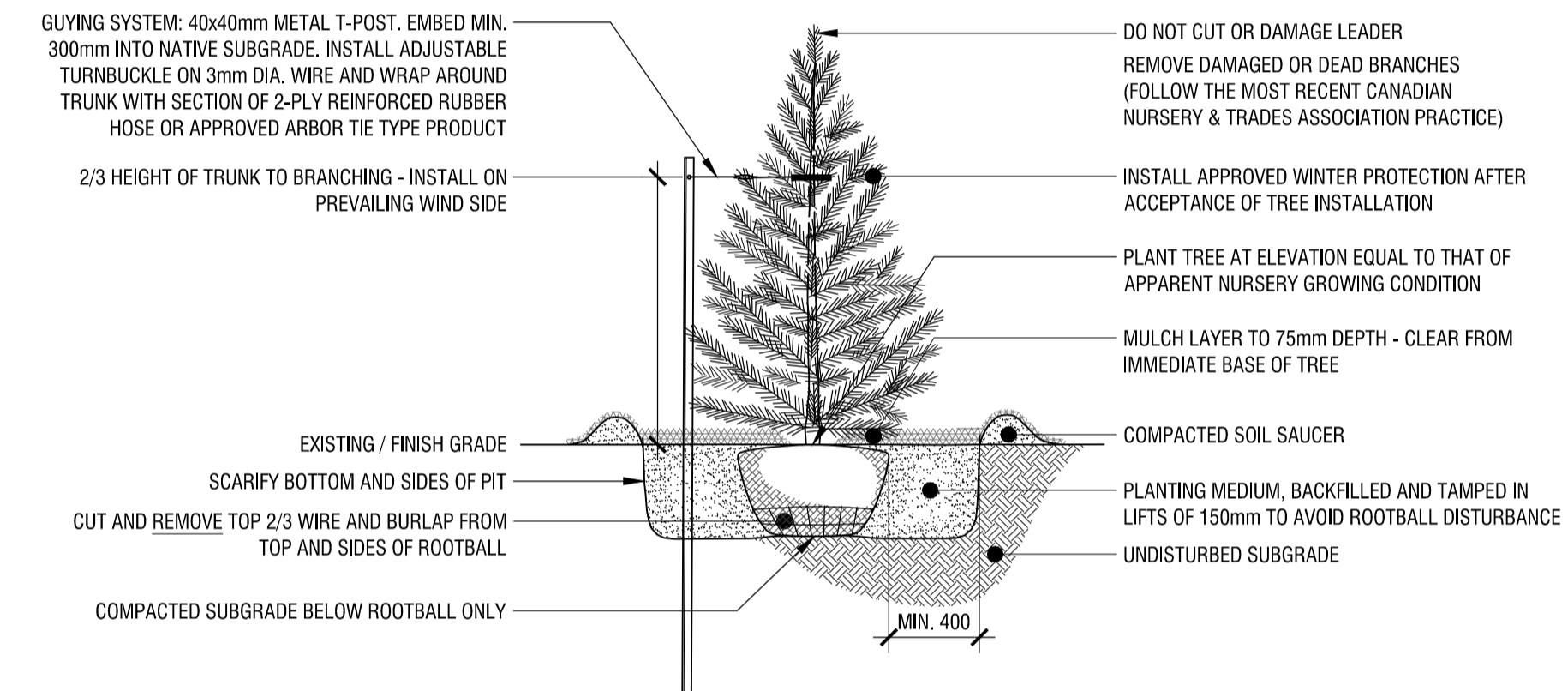
IMPORTANT NOTICE FOR CONTRACTOR:

THE CITY OF OTTAWA REQUIRES A Certificate of Completion (F1) Landscape Works TO BE SUBMITTED AND SEALED BY THE LANDSCAPE ARCHITECT. CONTRACTORS ARE RESPONSIBLE FOR FAMILIARIZING THEMSELVES WITH THE REQUIREMENTS OF THIS PROCESS AND PROVIDING SUFFICIENT NOTICE TO THE LANDSCAPE ARCHITECT TO CONDUCT SITE REVIEWS **DURING INSTALLATION** OF TREES. THE 1 YEAR WARRANTY PERIOD SHALL NOT COMMENCE UNTIL THE LANDSCAPE ARCHITECT HAS SUBMITTED THE F1 Certificate.

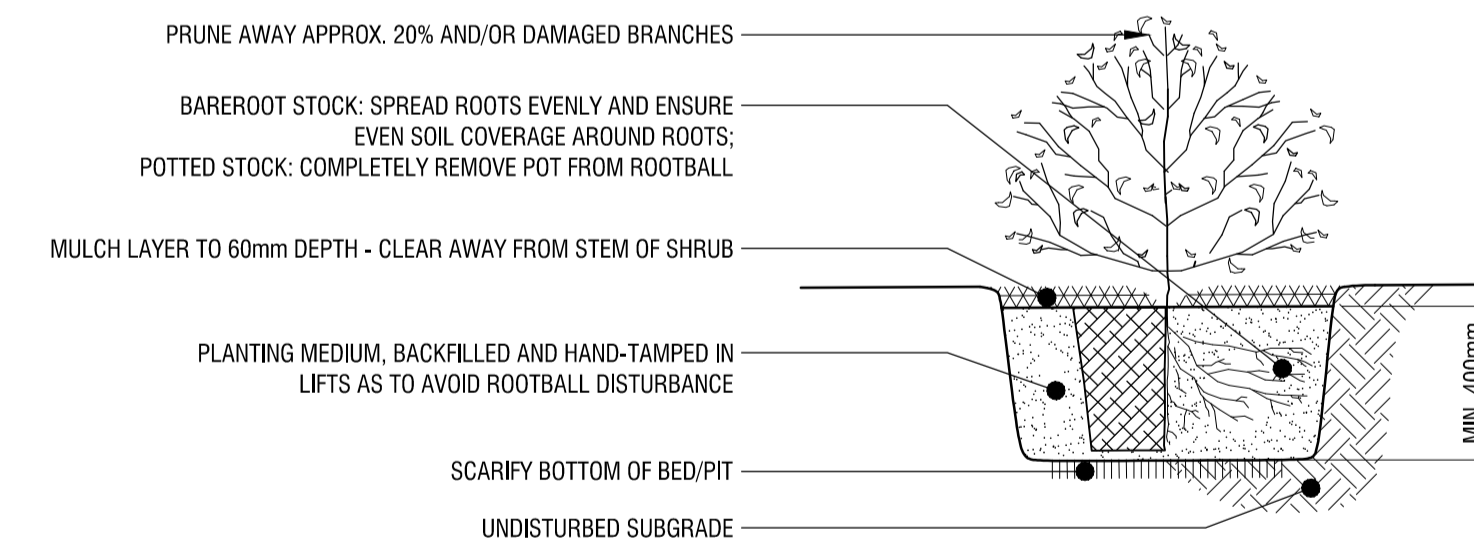
PRIOR TO INSTALLATION OF TREES, THE DEVELOPER WILL CONTACT THE PLANNING AND GROWTH MANAGEMENT AND FORESTRY SERVICES TO REVIEW THE SPECIES AND LOCATION OF TREES.



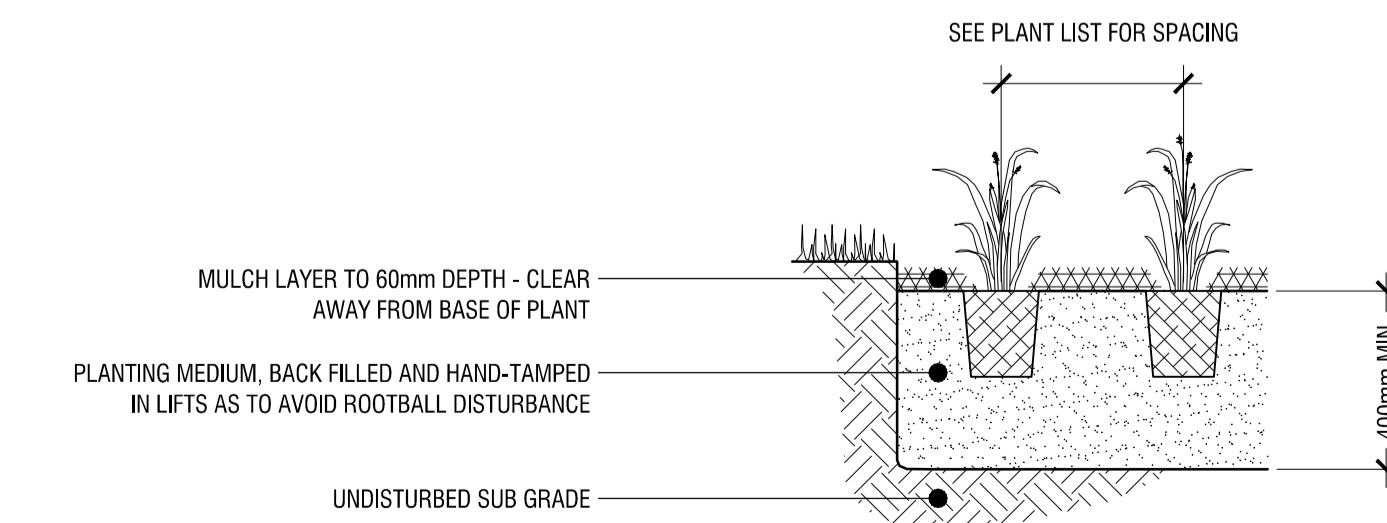
1 DECIDUOUS TREE PLANTING DETAIL
L2 n.t.s.



2 CONIFEROUS TREE PLANTING DETAIL
L2 n.t.s.



3 SHRUB PLANTING DETAIL
L2 n.t.s.



4 PERENNIAL PLANTING DETAIL
L2 n.t.s.

Copyright Reserved
The Copyrights to all designs and drawings are the property of Fotenn Consultants Inc. Unauthorized reproduction or use is forbidden. DO NOT SCALE DRAWING

Copyright réservés
Les droits d'auteur à tous les modèles et dessins sont la propriété de Fotenn Consultants Inc. Reproduction ou utilisation non autorisée est interdite. NE PAS L'ÉCHELLE DE DESSIN

Client / Client



key plan / plan repère

legend / légende

PRELIMINARY
NOT FOR CONSTRUCTION

| rev'n | description / la description | yyyy/mm/dd |
|-------|------------------------------|------------|
| 02 | Re-issued for SPA | 2022/03/01 |
| 01 | Issued for SPA | 2021/09/01 |
| 00 | Issued for Client Review | 2021/08/25 |

FOTENN Planning + Design
396 Cooper Street, Suite 300
Ottawa, ON, CANADA K2P 2H7
613.730.5709
fotenn.com

north / le nord stamp / le cachet

project / projet
ENBRIDGE OTTAWA OPERATIONS CENTRE
2571 LANCASTER ROAD

drawing / dessin
PLANTING DETAILS

| | | |
|------------------------------------|-----------------------------------|---------------------------------|
| designed / conçu KA / SP | drawn / dessiné SP / SG | reviewed / examiné KA |
| date | project number / No. du projet | |

drawing number / No. du dessin
L2 of 2

PLOT INFORMATION: DWG NAME: P:\PROJECTS\Millinery\2571 Lancaster Rd - Ecologie\DESIGN\DETAILS\DETAILS\2571 Lancaster Rd - 2022-03-01 3:55:36 PM SHEET SIZE: 600x1000mm PLOT INFO: 641x300mm PLOT INFO: 641x300mm PLOT INFO: 641x300mm