

Copyright Reserved

The Contractor shall verify and be responsible for all dimensions. DO NOT scale the drawing - any errors or omissions shall be reported to Stantec without delay.  
The Copyrights to all designs and drawings are the property of Stantec. Reproduction or use for any purpose other than that authorized by Stantec is forbidden.

Legend

- EXISTING DECIDUOUS TREE TO REMAIN
- PROPOSED DECIDUOUS TREE
- PROPOSED DECIDUOUS SHRUBS
- PROPOSED CONIFEROUS SHRUBS
- EXISTING GROUPING OF VEGETATION TO REMAIN
- PROPOSED PERENNIALS AND GRASSES
- CRITICAL ROOT ZONE (CRZ)
- PROPOSED PLANTING BED
- SOD WITH 150mm TOPSOIL
- PROPOSED UNIT PAVERS TYPE 1. REFER TO DETAIL 5/L300.
- PROPOSED UNIT PAVERS TYPE 2. REFER TO DETAIL 5/L300.
- PROPERTY LINE

Notes

- SITE PLAN PREPARED BY FIGURR DATED MARCH, 2022.
- PLEASE REFER TO TREE CONSERVATION REPORT PREPARED BY DENDRON FORESTRY SERVICES, JANUARY 24, 2021, FOR INFORMATION RELATED TO THE PRESERVATION AND REMOVAL OF EXISTING TREES.
- TOPOGRAPHIC SURVEY PREPARED BY ANNIS, O'SULLIVAN, VOLLEBECK LTD, DATED JULY 2, 2022.

5	RE-ISSUED FOR CITY REVIEW	CA	KP	22.11.25
4	RE-ISSUED FOR CITY REVIEW	CA	KP	22.10.17
3	RE-ISSUED FOR CITY REVIEW	CA	KP	22.06.08
2	REVISED AS PER CITY COMMENTS	CTL	KP	22.03.08
1	ISSUED FOR REVIEW	CTL	ILL	21.06.18

Revision		By	Appd.	YY.MM.DD
File Name:	160401679-L8	CTL	ILL	2021.05.13
		Dwn.	Chkd.	Dsgn.
				YY.MM.DD

Permit-Seal



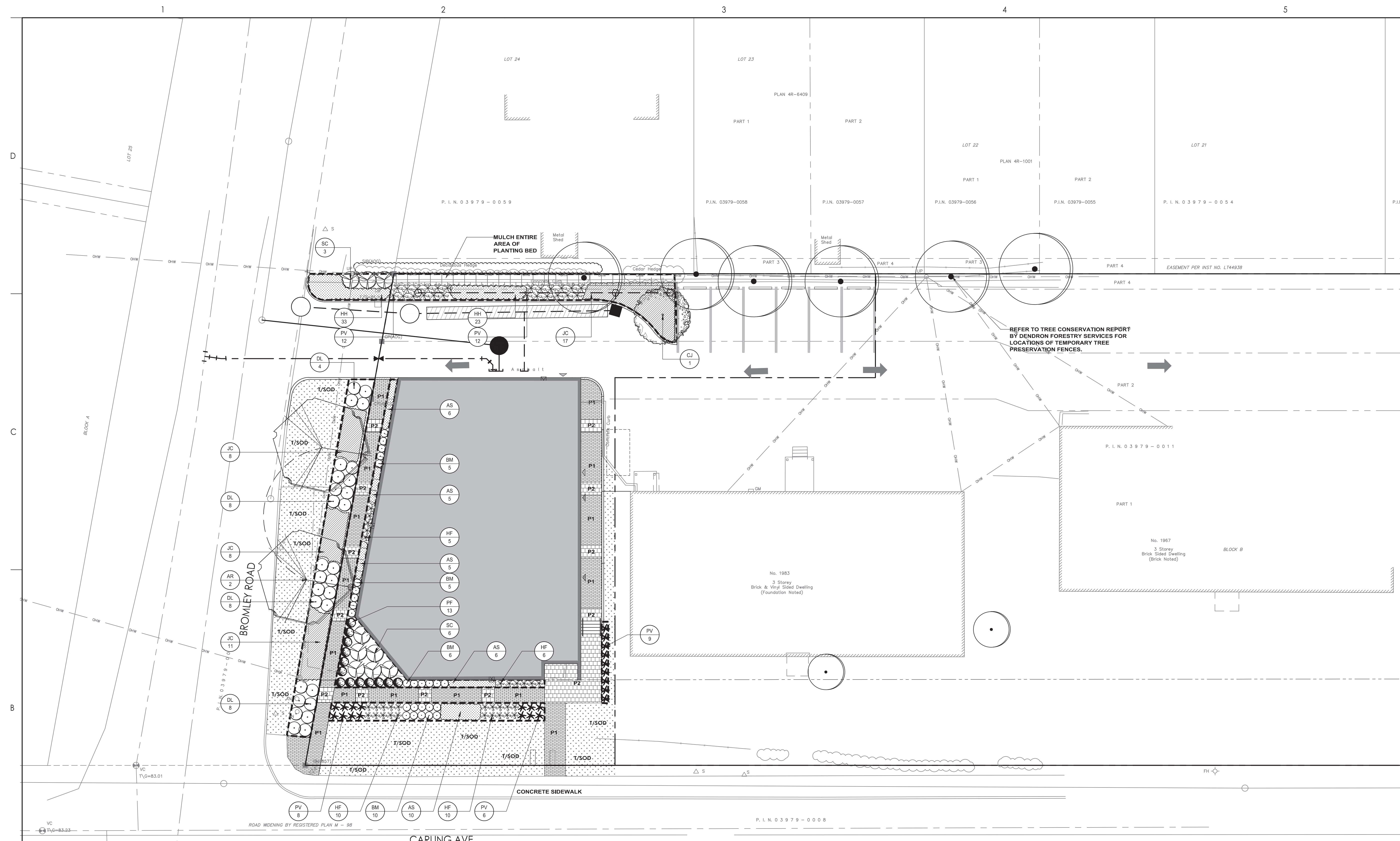
Client/Project  
247393 ONTARIO INC  
1951 CARLING AVENUE  
OTTAWA, ON

Title  
LANDSCAPE PLAN

Project No. 160401679 Scale 1:150

Drawing No. Sheet Revision

L101 2 of 3 5 PLAN # 18587



QTY	KEY	BOTANICAL NAME	COMMON NAME	SIZE	REMARKS
<b>DECIDUOUS TREES - REFER TO DETAIL 2/L200</b>					
2	AR	<i>Acer rubrum 'Redpointe'</i>	Redpointe Maple	70 mm (cal)	W.B.: Plant at 10 m o/c
1	CJ	<i>Cercidiphyllum japonicum</i>	Katsura Tree	70 mm (cal)	W.B.: Plant at 10 m o/c
<b>DECIDUOUS SHRUBS - REFER TO DETAIL 4/L200</b>					
28	DL	<i>Diervilla lonicera</i>	Bush Honeysuckle	500 mm (ht.)	C.G.: Plant at 1000 mm o/c
14	PF	<i>Potentilla fruticosa 'Abbotswood'</i>	Abbotswood Cinquefoil	500 mm (ht.)	C.G.: Plant at 750 mm o/c
9	SC	<i>Sambucus canadensis 'Lemony Lace'</i>	Lemony Lace Elderberry	500 mm (ht.)	C.G.: Plant at 1300 mm o/c
<b>BROADLEAVED EVERGREEN SHRUBS - REFER TO DETAIL 4/L200</b>					
25	BM	<i>Buxus microphylla 'Faulkner'</i>	Faulkner Boxwood	400 mm (ht.)	Potted: Plant at 600 mm o/c
<b>CONIFEROUS SHRUBS - REFER TO DETAIL 4/L200</b>					
44	JC	<i>Juniperus communis var. depressa 'Aurea'</i>	Canadian Golden Juniper	500 mm (sp.)	Potted: Plant at 1000 mm o/c
<b>PERENNIALS / ORNAMENTAL GRASSES - REFER TO DETAIL 3/L200</b>					
32	AS	<i>Astilbe arendsii 'Cattleya'</i>	Cattleya False Spirea	1 Gallon	Potted: Plant at 600 mm o/c
56	HH	<i>Helianthus scaberrimus 'Tuscan Sun'</i>	Tuscan Sun Sunflower	1 Gallon	Potted: Plant at 500 mm o/c
31	HF	<i>Heuchera x 'Frosted Violet'</i>	Frosted Violet Coral Bells	1 Gallon	Potted: Plant at 600 mm o/c
47	PV	<i>Panicum virgatum 'Prairie Winds'</i>	Cheyenne Sky Switch Grass	1 Gallon	Potted: Plant at 700 mm o/c

1 LANDSCAPE PLAN  
1:150

N:\CAD\Bentley\01-05\active\160401679\design\landscape\160401679\_L8.dwg  
 2022/12/21 10:17 AM By: Acar, Chantal  
 ORIGINAL SHEET - ARCHD