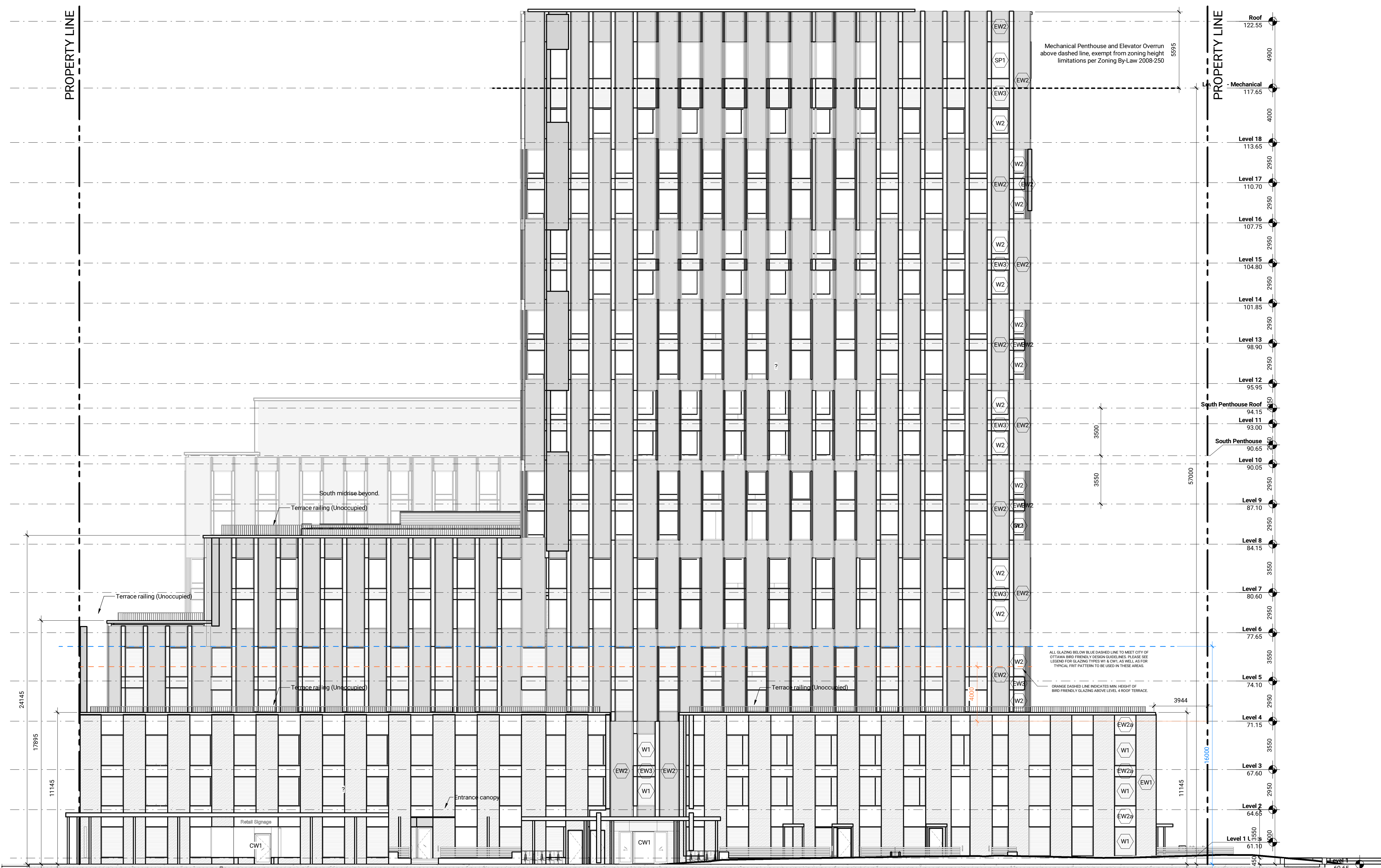
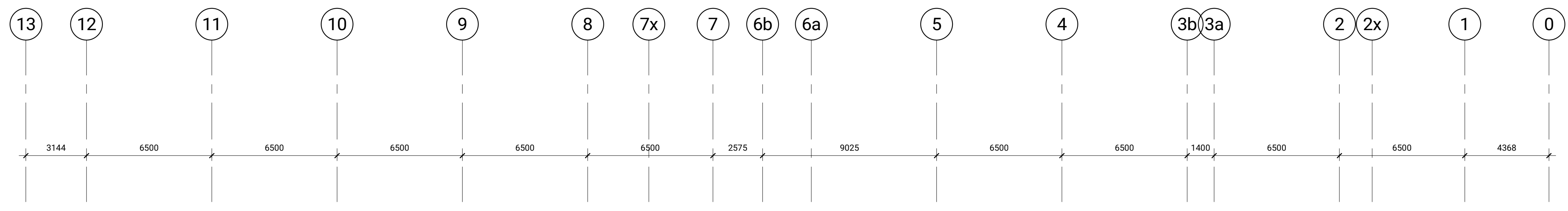


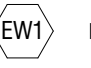
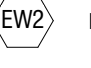
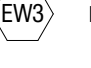
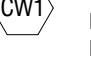
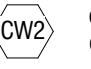
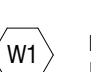
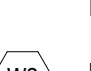
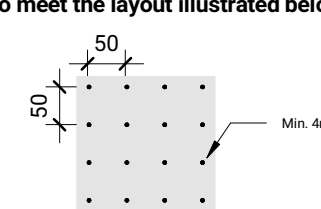
ISSUED

No.	Date	Description
1	23 JUL 2021	ISSUED FOR COSTING
2	30 JUL 2021	ISSUED FOR 100% SCHEMATIC DESIGN
4	08 SEP 2021	ISSUED FOR SITE PLAN CONTROL
5	14 DEC 2021	ISSUED FOR 100% DESIGN DEVELOPMENT
6	18 FEB 2022	ISSUED FOR 30% CONSTRUCTION DOCUMENTS
7	09 MAR 2022	ISSUED FOR SITE PLAN RESUBMISSION



*Andrew McCreight*  
**ANDREW MCCREIGHT**  
MANAGER (A), DEVELOPMENT REVIEW CENTRAL  
PLANNING, REAL ESTATE & ECONOMIC DEVELOPMENT  
DEPARTMENT, CITY OF OTTAWA

**APPROVED**  
By Andrew McCreight at 10:21 am, Oct 19, 2023

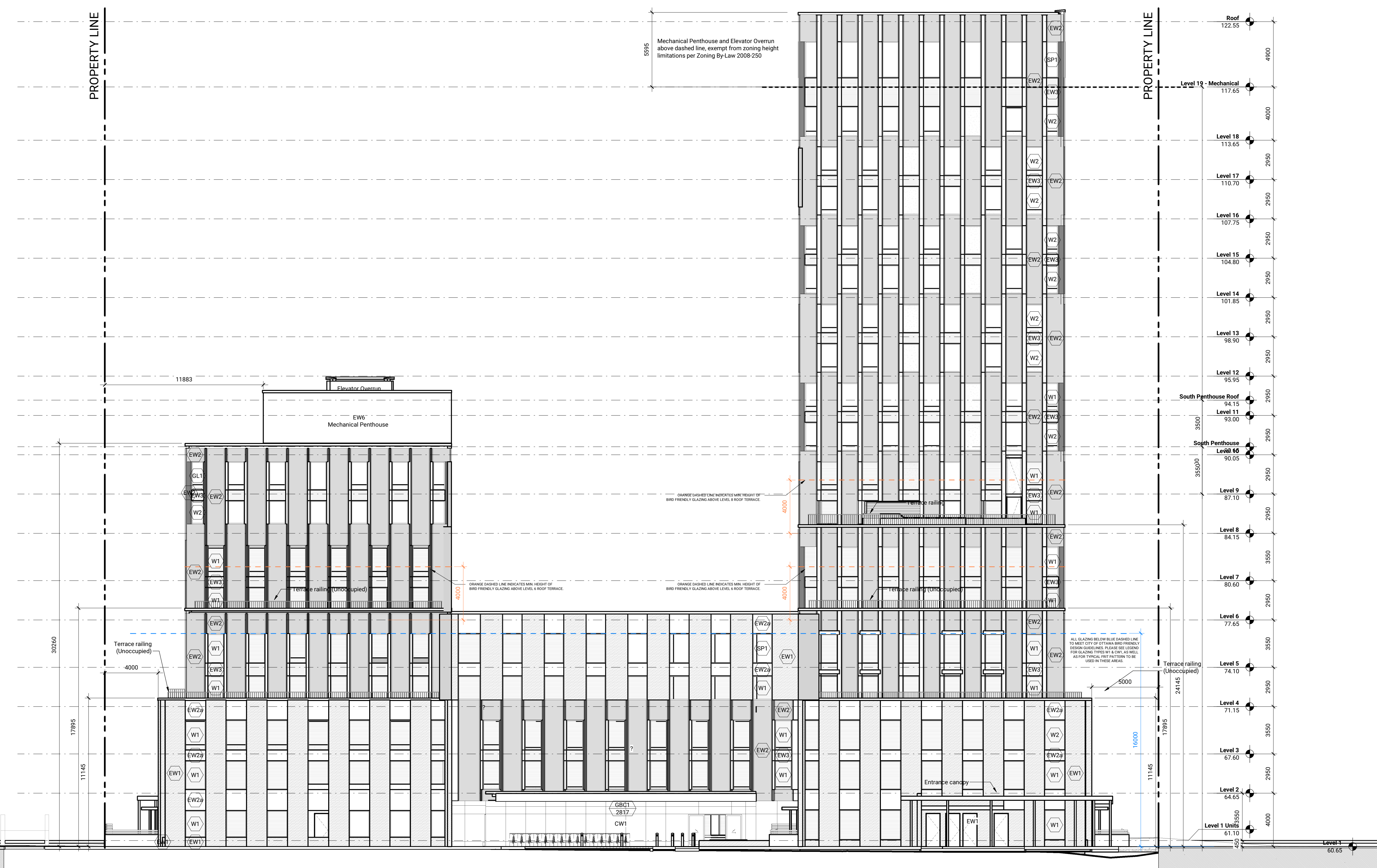
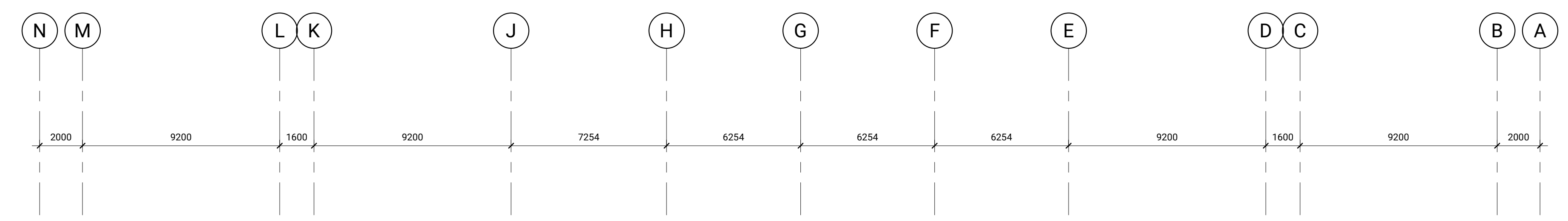
-  Exterior Wall Type 1 - Masonry Cladding
  -  Exterior Wall Type 2 - Metal Panel Cladding
  -  Exterior Wall Type 3 - Metal Panel Cladding
  -  Curtain Wall Type 1 - Triple Glazed Curtain Wall Bird-Friendly Fit on Surface #1 to meet Ottawa Bird Friendly Design Guidelines\*
  -  Curtain Wall Type 2 - Triple Glazed Fibreglass Window Clear glazing without fit
  -  Punched Window Type 1 - Triple Glazed Fibreglass Window Bird-Friendly Fit on Surface #1 to meet Ottawa Bird Friendly Design Guidelines\*
  -  Punched Window Type 2 - Triple Glazed Fibreglass Window Clear glazing without fit
- \*Bird Friendly fit pattern to be installed on Surface #1, to meet the layout illustrated below:
- 
- Contractor Must Check & Verify all Dimensions on the Job.  
Do Not Scale Drawings.  
All Drawings, Specifications and Related Documents are the Copyright Property of the Architect and shall be returned upon Request, Revocation of Drawing, Reproduction and Related Documents in Part or in Whole is Prohibited without the Written permission of the Architect.  
This Drawing is Not to be Used for Construction Until Signed by the Architect.

**GLADSTONE VILLAGE  
PHASE 1**  
933 Gladstone Avenue - Phase 1  
21006

**North Elevation**  
As indicated  
**A301**

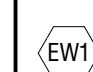
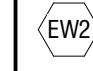
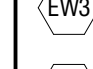
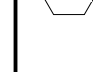
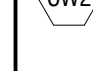
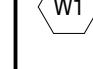
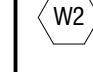
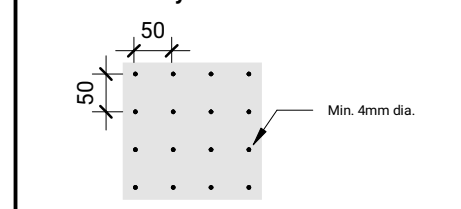
ISSUED

No.	Date	Description
1	23 JUL 2021	ISSUED FOR COSTING
2	30 JUL 2021	ISSUED FOR 100% SCHEMATIC DESIGN
4	08 DEC 2021	ISSUED FOR SITE PLAN CONTROL
5	14 DEC 2021	ISSUED FOR 100% DESIGN DEVELOPMENT
6	18 FEB 2022	ISSUED FOR 90% CONSTRUCTION DOCUMENTS
7	09 MAR 2022	ISSUED FOR SITE PLAN RESUBMISSION



*Andrew McCreight*  
**ANDREW MCCREIGHT**  
MANAGER (A), DEVELOPMENT REVIEW CENTRAL  
PLANNING, REAL ESTATE & ECONOMIC DEVELOPMENT  
DEPARTMENT, CITY OF OTTAWA

**APPROVED**  
By Andrew McCreight at 10:21 am, Oct 19, 2023

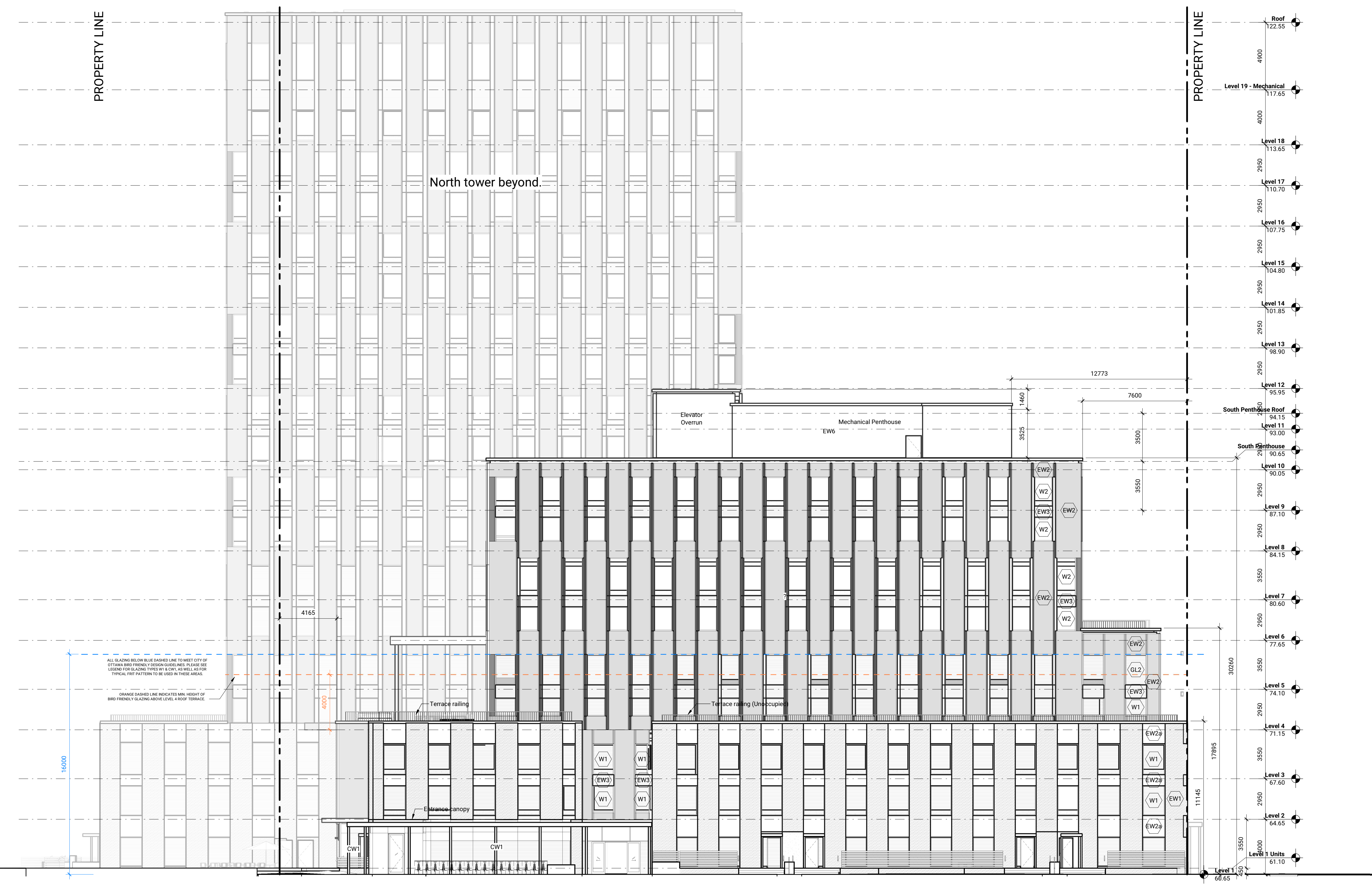
-  Exterior Wall Type 1 - Masonry Cladding
  -  Exterior Wall Type 2 - Metal Panel Cladding
  -  Exterior Wall Type 3 - Metal Panel Cladding
  -  Curtain Wall Type 1 - Triple Glazed Curtain Wall Bird Friendly Frit on Surface #1 to meet Ottawa Bird Friendly Design Guidelines\*
  -  Curtain Wall Type 2 - Triple Glazed Fiberglass Window Clear glazing without frit
  -  Punched Window Type 1 - Triple Glazed Fiberglass Window Bird Friendly Frit on Surface #1 to meet Ottawa Bird Friendly Design Guidelines\*
  -  Punched Window Type 2 - Triple Glazed Fiberglass Window Clear glazing without frit
- \*Bird friendly frit pattern to be installed on Surface #1, to meet the layout illustrated below:
- 
- Contractor Must Check & Verify all Dimensions on the Job.  
Do Not Scale Drawings.  
All Drawings, Specifications and Related Documents are the Copyright Property of the Architect and shall be returned upon Request, Revocation of Drawing, Specification and Related Documents or Project or Phase or Particular Work Item without permission of the Architect.  
This Drawing is Not to be Used for Construction Until Signed by the Architect.

**GLADSTONE VILLAGE  
PHASE 1**  
933 Gladstone Avenue - Phase 1  
211006

**East Elevation**  
As indicated  
**A302**

ISSUED


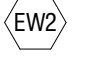

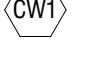

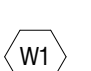

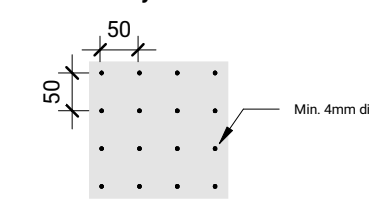
No.	Date	Description
1	23 JUL 2021	ISSUED FOR COSTING
2	30 JUL 2021	ISSUED FOR 100% SCHEMATIC DESIGN
4	08 DEC 2021	ISSUED FOR SITE PLAN CONTROL
5	14 DEC 2021	ISSUED FOR 100% DESIGN DEVELOPMENT
6	18 FEB 2022	ISSUED FOR 30% CONSTRUCTION DOCUMENTS
7	09 MAR 2022	ISSUED FOR SITE PLAN RESUBMISSION



*Andrew McCreight*

**ANDREW MCCREIGHT**  
MANAGER (A), DEVELOPMENT REVIEW CENTRAL  
PLANNING, REAL ESTATE & ECONOMIC DEVELOPMENT  
DEPARTMENT, CITY OF OTTAWA

**APPROVED**  
By Andrew McCreight at 10:21 am, Oct 19, 2023

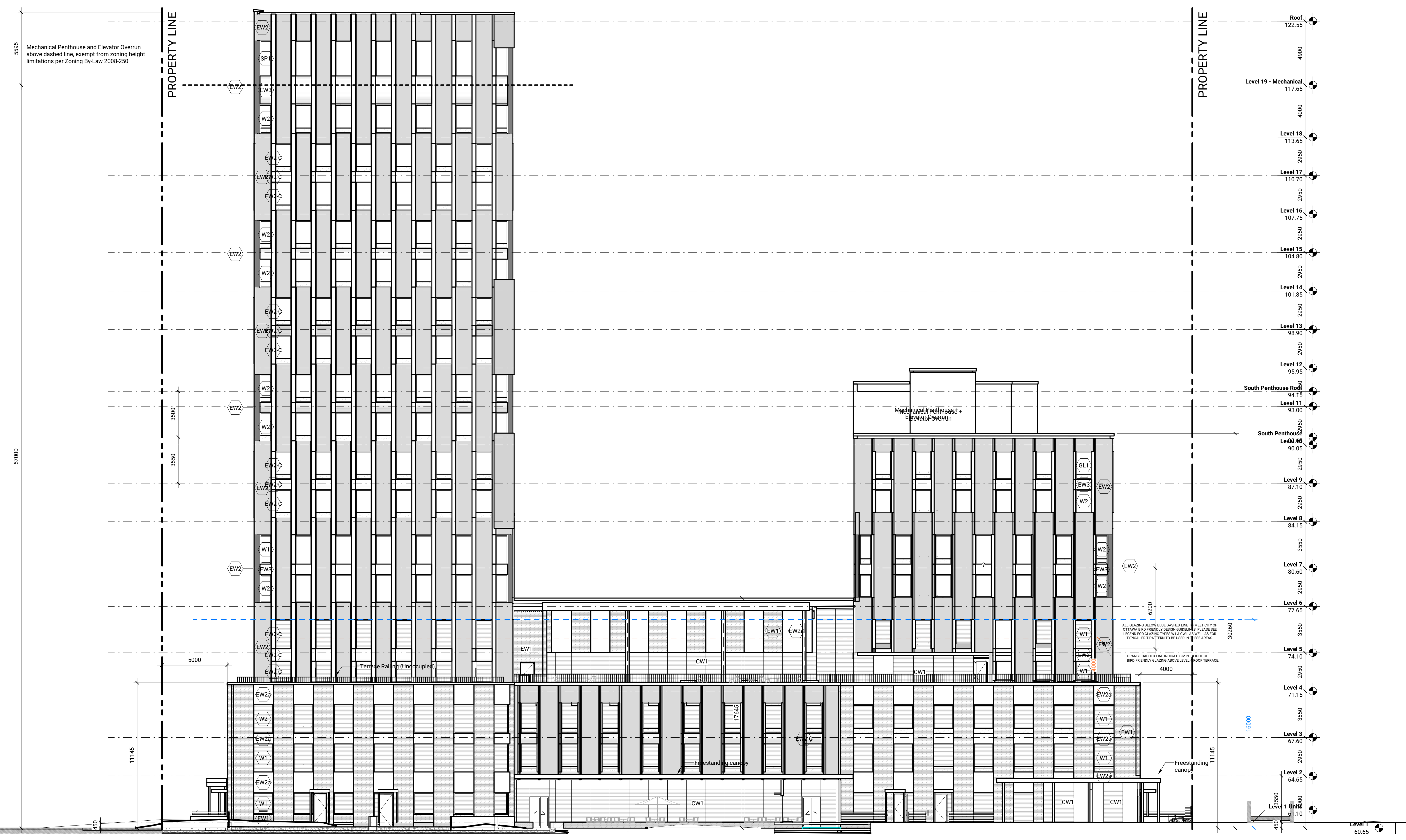
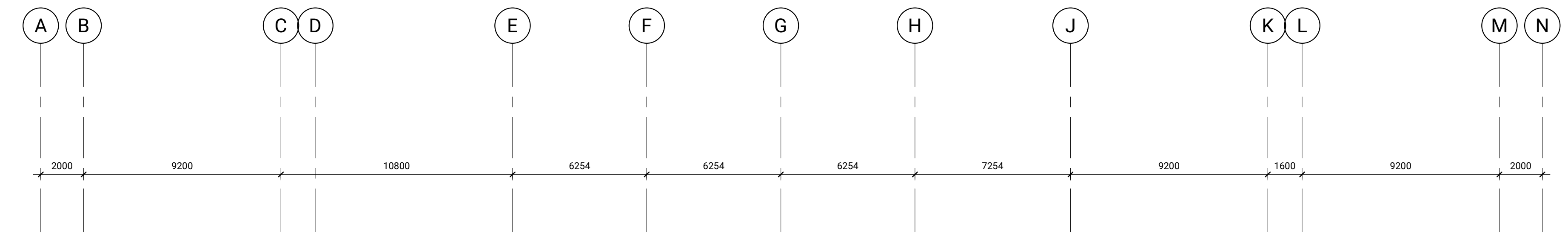
-  Exterior Wall Type 1 - Masonry Cladding
  -  Exterior Wall Type 2 - Metal Panel Cladding
  -  Exterior Wall Type 3 - Metal Panel Cladding
  -  Curtain Wall Type 1 - Triple Glazed Curtain Wall Bird Friendly Fit on Surface #1 to meet Ottawa Bird Friendly Design Guidelines\*
  -  Curtain Wall Type 2 - Triple Glazed Fibreglass Window Clear glazing without frit
  -  Punched Window Type 1 - Triple Glazed Fibreglass Window Bird Friendly Fit on Surface #1 to meet Ottawa Bird Friendly Design Guidelines\*
  -  Punched Window Type 2 - Triple Glazed Fibreglass Window Clear glazing without frit
- \*Bird Friendly frit pattern to be installed on Surface #1, to meet the layout illustrated below:
- 
- Contractor Must Check & Verify all Dimensions on the Job.  
Do Not Scale Drawings.  
As Issued: Specifications and Related Documents are the Copyright Property of the Architect and shall be returned to the Architect upon Request. Reproduction of Drawings, Specifications and Related Documents in Part or in Whole is Prohibited without the Written permission of the Architect.  
This Drawing is Not to be Used for Construction Until Signed by the Architect.

**GLADSTONE VILLAGE  
PHASE 1**  
933 Gladstone Avenue - Phase 1  
211006

**South Elevation**  
As indicated  
**A303**

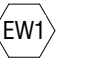
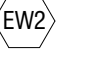
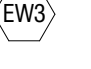
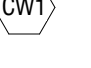
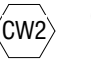
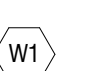
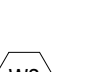
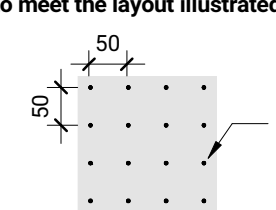
ISSUED

No.	Date	Description
1	23 JUL 2021	ISSUED FOR COSTING
2	30 JUL 2021	ISSUED FOR 100% SCHEMATIC DESIGN
4	08 DEC 2021	ISSUED FOR SITE PLAN CONTROL
5	14 DEC 2021	ISSUED FOR 100% DESIGN DEVELOPMENT
6	18 FEB 2022	ISSUED FOR 90% CONSTRUCTION DOCUMENTS
7	09 MAR 2022	ISSUED FOR SITE PLAN RESUBMISSION



*Andrew McCreight*  
**ANDREW MCCREIGHT**  
MANAGER (A), DEVELOPMENT REVIEW CENTRAL  
PLANNING, REAL ESTATE & ECONOMIC DEVELOPMENT  
DEPARTMENT, CITY OF OTTAWA

**APPROVED**  
By Andrew McCreight at 10:21 am, Oct 19, 2023

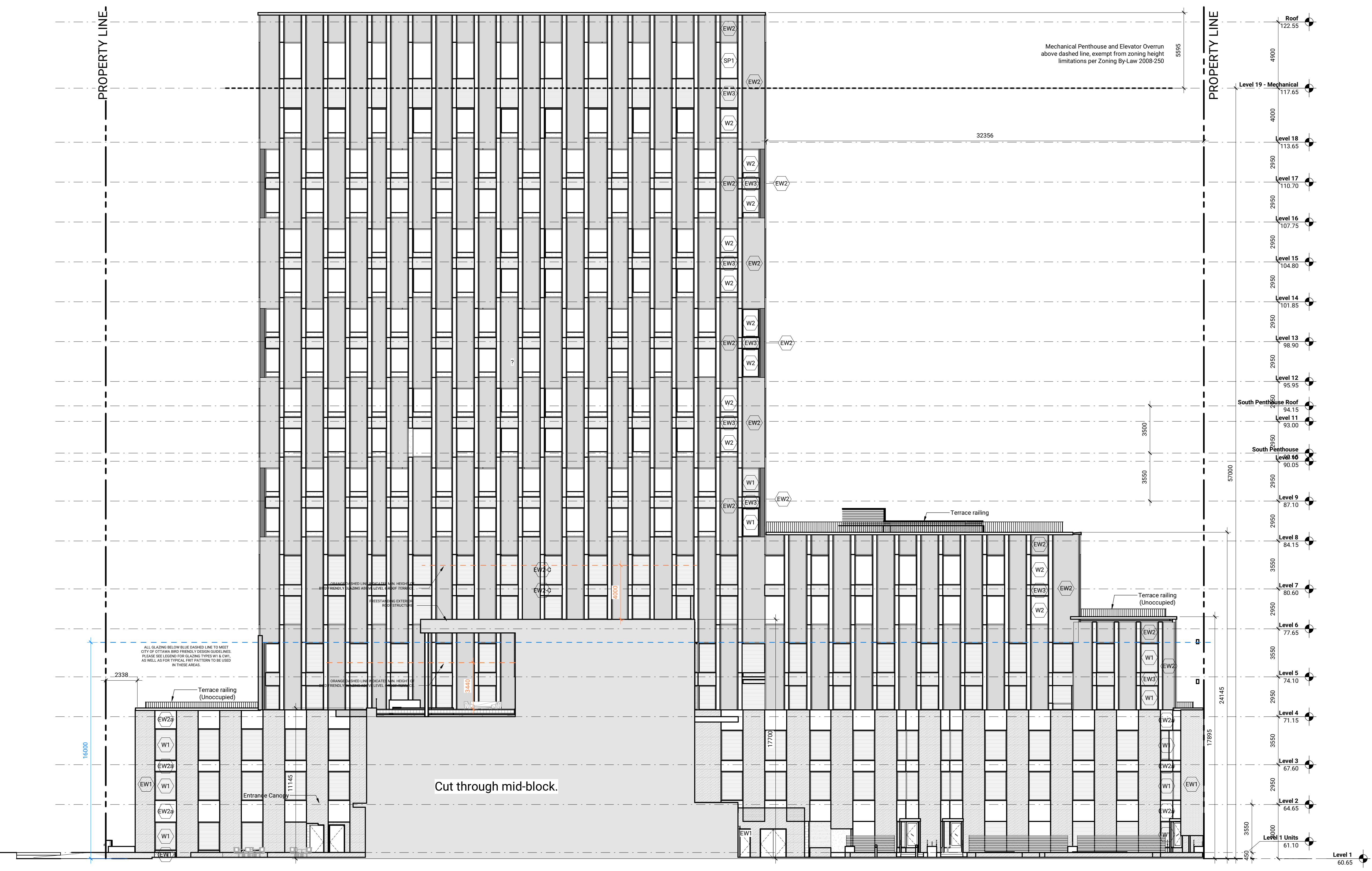
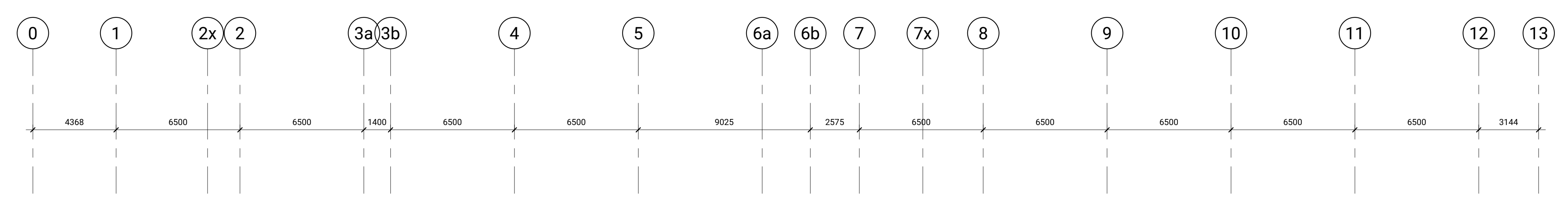
-  Exterior Wall Type 1 - Masonry Cladding
  -  Exterior Wall Type 2 - Metal Panel Cladding
  -  Exterior Wall Type 3 - Metal Panel Cladding
  -  Curtain Wall Type 1 - Triple Glazed Curtain Wall Bird-friendly Frit on Surface #1 to meet Ottawa Bird Friendly Design Guidelines\*
  -  Curtain Wall Type 2 - Triple Glazed Fibreglass Window Clear glazing without frit
  -  Punched Window Type 1 - Triple Glazed Fibreglass Window Bird-friendly Frit on Surface #1 to meet Ottawa Bird Friendly Design Guidelines\*
  -  Punched Window Type 2 - Triple Glazed Fibreglass Window Clear glazing without frit
- \*Bird-friendly frit pattern to be installed on Surface #1, to meet the layout illustrated below:
- 
- Contractor Must Check & Vary all Dimensions on the Job.  
Do Not Scale Drawings.  
All drawings, specifications and related documents are the copyright property of the Architect and shall be returned upon request. Reproduction of drawings, specifications and related documents in part or in whole is prohibited without the written permission of the Architect.  
This Drawing is Not to be Used for Construction Until Signed by the Architect.

**GLADSTONE VILLAGE**  
**PHASE 1**  
933 Gladstone Avenue - Phase 1  
211006

**West Elevation**  
As indicated  
**A304**

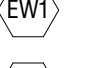
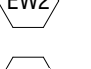
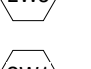
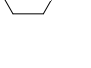
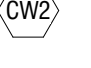
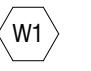
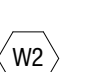
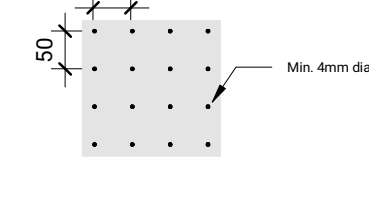
ISSUED

No.	Date	Description
1	23 JUL 2021	ISSUED FOR COSTING
2	30 JUL 2021	ISSUED FOR 100% SCHEMATIC DESIGN
4	08 DEC 2021	ISSUED FOR SITE PLAN CONTROL
5	14 DEC 2021	ISSUED FOR 100% DESIGN DEVELOPMENT
6	18 FEB 2022	ISSUED FOR 30% CONSTRUCTION DOCUMENTS
7	09 MAR 2022	ISSUED FOR SITE PLAN RESUBMISSION



*Andrew McCreight*  
**ANDREW MCCREIGHT**  
MANAGER (A), DEVELOPMENT REVIEW CENTRAL,  
PLANNING, REAL ESTATE & ECONOMIC DEVELOPMENT  
DEPARTMENT, CITY OF OTTAWA

**APPROVED**  
By Andrew McCreight at 10:21 am, Oct 19, 2023

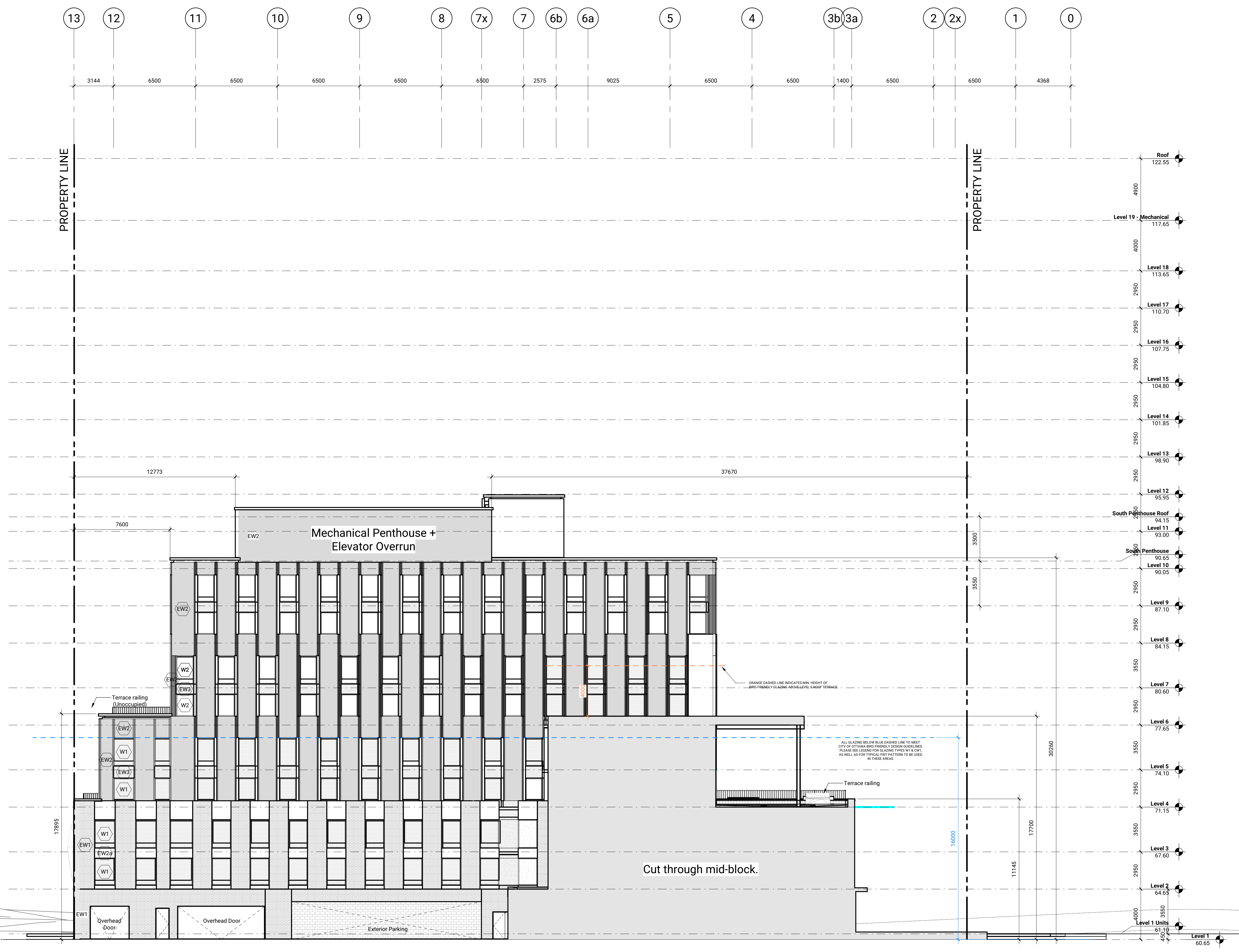
-  Exterior Wall Type 1 - Masonry Cladding
  -  Exterior Wall Type 2 - Metal Panel Cladding
  -  Exterior Wall Type 3 - Metal Panel Cladding
  -  Curtain Wall Type 1 - Triple Glazed Curtain Wall Bird-friendly Fit on Surface #1 to meet Ottawa Bird Friendly Design Guidelines\*
  -  Curtain Wall Type 2 - Triple Glazed Fiberglass Window Clear glazing without frit
  -  Punched Window Type 1 - Triple Glazed Fiberglass Window Bird-friendly Fit on Surface #1 to meet Ottawa Bird Friendly Design Guidelines\*
  -  Punched Window Type 2 - Triple Glazed Fiberglass Window Clear glazing without frit
- \*Bird friendly fit pattern to be installed on Surface #1, to meet the layout illustrated below:
- 
- Contractor Must Check & Verify all Dimensions on the Job.  
Do Not Scale Drawings.  
All Drawings, Specifications and Related Documents are the Copyright Property of the Architect and shall be returned upon Request. Reproduction of Drawings, Specifications and Related Documents in Part or in Whole is Prohibited Without the Written permission of the Architect.  
This Drawing is Not to be Used for Construction Until Signed by the Architect.

**GLADSTONE VILLAGE  
PHASE 1**  
933 Gladstone Avenue - Phase 1  
21006

**Rebate Elevations**  
As indicated  
**A305**

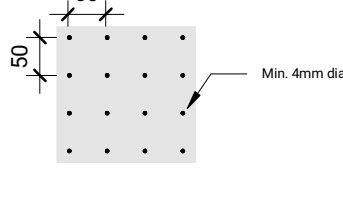
ISSUED

No.	Date	Description
1	23 JUL 2021	ISSUED FOR COSTING
2	30 JUL 2021	ISSUED FOR 100% SCHEMATIC DESIGN
4	08 DEC 2021	ISSUED FOR SITE PLAN CONTROL
5	14 DEC 2021	ISSUED FOR 100% DESIGN DEVELOPMENT
6	18 FEB 2022	ISSUED FOR 90% CONSTRUCTION DOCUMENTS
7	09 MAR 2022	ISSUED FOR SITE PLAN RESUBMISSION



*Andrew McCreight*  
**ANDREW MCCREIGHT**  
MANAGER (A), DEVELOPMENT REVIEW CENTRAL  
PLANNING, REAL ESTATE & ECONOMIC DEVELOPMENT  
DEPARTMENT, CITY OF OTTAWA

**APPROVED**  
By Andrew McCreight at 10:21 am, Oct 19, 2023

- (EW1) Exterior Wall Type 1 - Masonry Cladding
  - (EW2) Exterior Wall Type 2 - Metal Panel Cladding
  - (EW3) Exterior Wall Type 3 - Metal Panel Cladding
  - (CW1) Curtain Wall Type 1 - Triple Glazed Curtain Wall Bird-friendly Fit on Surface #1 to meet Ottawa Bird Friendly Design Guidelines\*
  - (CW2) Curtain Wall Type 2 - Triple Glazed Fiberglass Window Clear glazing without fit
  - (W1) Punched Window Type 1 - Triple Glazed Fiberglass Window Bird-friendly Fit on Surface #1 to meet Ottawa Bird Friendly Design Guidelines\*
  - (W2) Punched Window Type 2 - Triple Glazed Fiberglass Window Clear glazing without fit
- \*Bird friendly frit pattern to be installed on Surface #1, to meet the layout illustrated below:
- 

Contractor Must Check & Vary all Dimensions on the Job.  
Do Not Scale Drawings.  
All Drawings, Specifications and Related Documents are the Copyright Property of the Architect and shall be returned upon Request, Revocation of Drawing, Specifications and Related Documents in their entirety to the Architect without the Written permission of the Architect.  
This Drawing is Not to be Used for Construction Until Signed by the Architect.

**GLADSTONE VILLAGE  
PHASE 1**  
933 Gladstone Avenue • Phase 1  
21006

**Rebate Elevations**  
As indicated  
**A306**