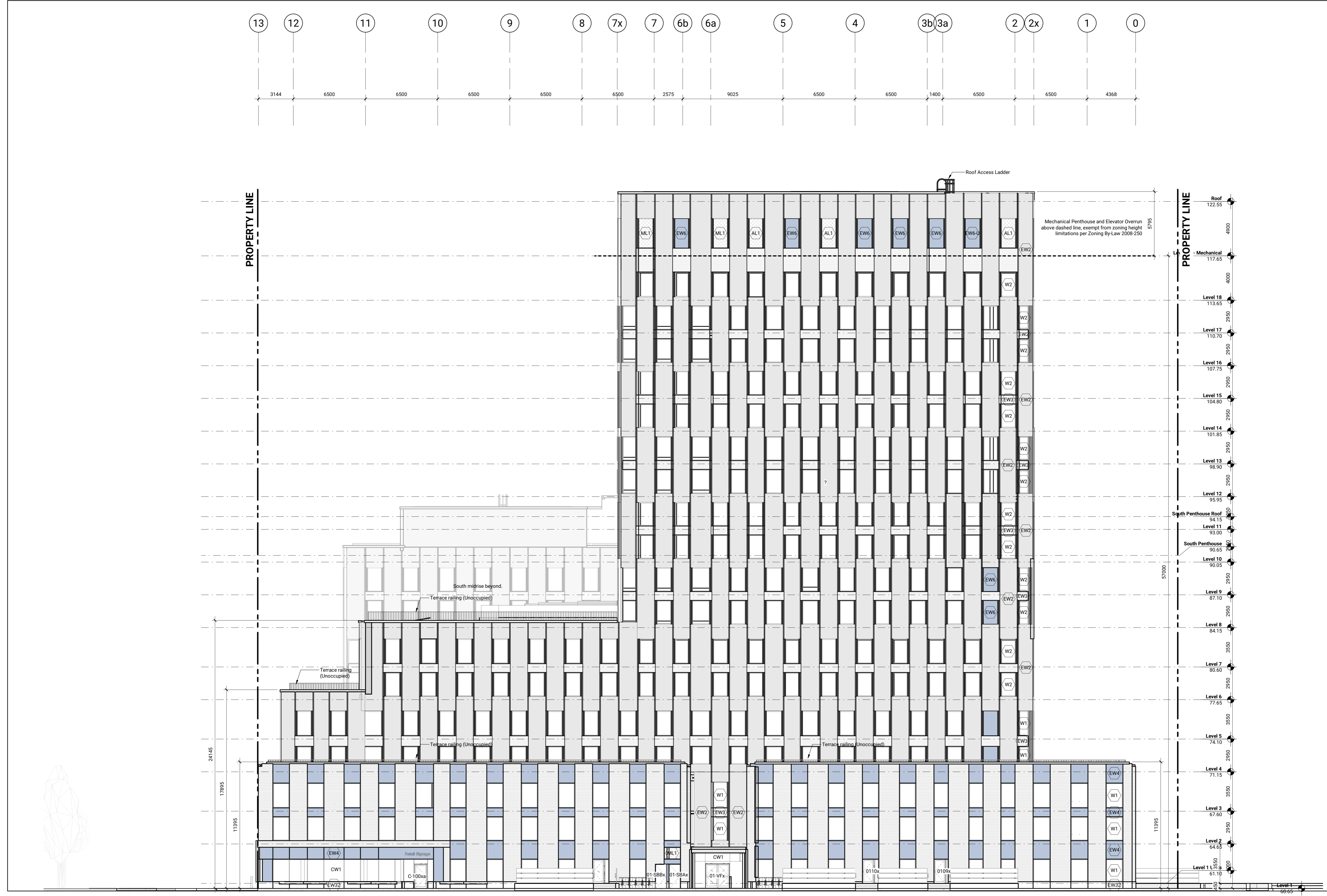


*Andrew McCreight*  
**ANDREW MCCREIGHT**  
 MANAGER, DEVELOPMENT REVIEW CENTRAL  
 PLANNING, REAL ESTATE & ECONOMIC DEVELOPMENT  
 DEPARTMENT, CITY OF OTTAWA

**APPROVED**  
 By Andrew McCreight at 7:19 am, Mar 12, 2024

ISSUED

| No. | Date        | Description                                 |
|-----|-------------|---|
| 1   | 23 JUL 2021 | ISSUED FOR COSTING                          |
| 2   | 30 JUL 2021 | ISSUED FOR 100% SCHEMATIC DESIGN            |
| 4   | 08 SEP 2021 | ISSUED FOR SITE PLAN CONTROL                |
| 5   | 14 DEC 2021 | ISSUED FOR 100% DESIGN DEVELOPMENT          |
| 6   | 18 FEB 2022 | ISSUED FOR 30% CONSTRUCTION DOCUMENTS       |
| 7   | 09 MAR 2022 | ISSUED FOR SITE PLAN RESUBMISSION DOCUMENTS |
| 9   | 16 JUN 2022 | ISSUED FOR 60% CONSTRUCTION DOCUMENTS       |
| 12  | 06 OCT 2022 | ISSUED FOR BUILDING PERMIT DOCUMENTS        |
| 13  | 31 OCT 2022 | ISSUED FOR 93% CONSTRUCTION DOCUMENTS       |
| 22  | 16 FEB 2024 | ISSUED FOR TENDER                           |
| 24  | 05 MAR 2024 | ISSUED FOR SITE PLAN RESUBMISSION           |



- Architectural Louver - Perforated Type - Refer Div. 08
- Exterior Wall Type 1 - Refer to A550 & Div. 07
- Exterior Wall Type 2 - Refer to A550 & Div. 07
- Exterior Wall Type 3 - Refer to A550 & Div. 07
- Exterior Wall Type 4 - Refer to A550 & Div. 07
- Exterior Wall Type 5 - Refer to A550 & Div. 07
- Exterior Wall Type 6 - Refer to A550 & Div. 07
- Curtain Wall Type 1 - Triple Glazed Curtain Wall  
Clear glazing without frit  
Refer to Div. 08
- Curtain Wall Type 2 - Triple Glazed Fibreglass Window  
Clear glazing without frit  
Refer to Div. 08
- Punched Window Type 1 - Triple Glazed Fibreglass Window  
Clear glazing without frit  
Refer to Div. 08
- Punched Window Type 2 - Triple Glazed Fibreglass Window  
Clear glazing without frit  
Refer to Div. 08



Contractor Must Check & Verify all Dimensions on the Job.  
 Do Not Scale Drawings.  
 All Drawings, Specifications and Related Documents are the Copyright Property of the Architect and Must be Released Upon Request. Reproduction of Drawings, Specifications and Related Documents in Part or in Whole is Forbidden Without the Written permission of the Architect.  
 This Drawing is Not to be Used for Construction Until Signed by the Architect.

**GLADSTONE VILLAGE**  
**PHASE 1**  
 933 Gladstone Avenue - Phase 1  
 211006

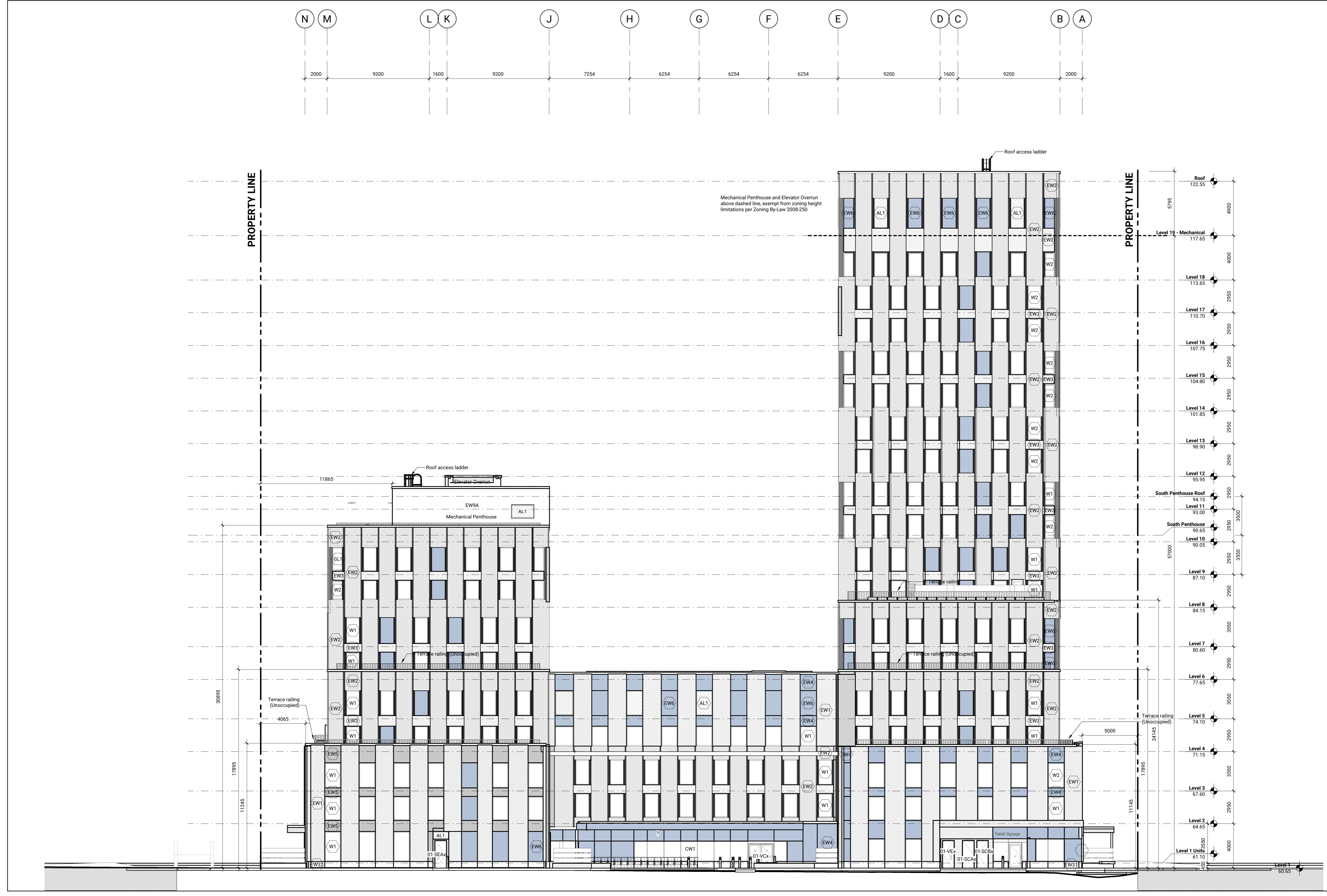
**North Elevation**  
 As indicated  
**A301**

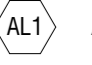
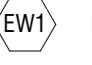
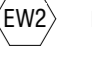
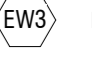
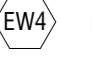
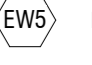
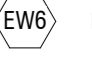
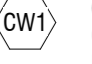
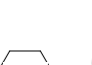
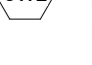
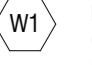
*Andrew McCreight*  
**ANDREW MCCREIGHT**  
 MANAGER, DEVELOPMENT REVIEW CENTRAL  
 PLANNING, REAL ESTATE & ECONOMIC DEVELOPMENT  
 DEPARTMENT, CITY OF OTTAWA

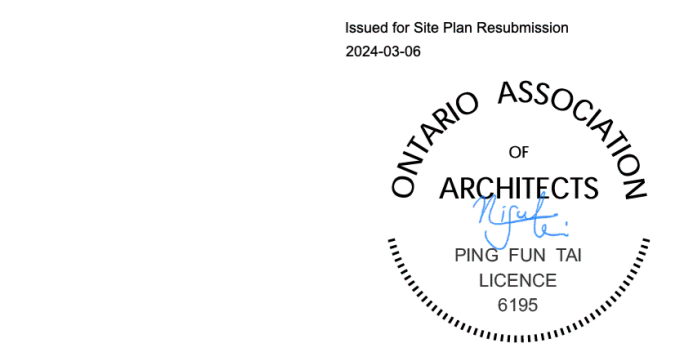
**APPROVED**  
 By Andrew McCreight at 7:19 am, Mar 12, 2024

ISSUED

| No. | Date        | Description                                 |
|-----|-------------|---|
| 1   | 23 JUL 2021 | ISSUED FOR COSTING                          |
| 2   | 30 JUL 2021 | ISSUED FOR 100% SCHEMATIC DESIGN            |
| 4   | 08 SEP 2021 | ISSUED FOR SITE PLAN CONTROL                |
| 5   | 14 DEC 2021 | ISSUED FOR 100% DESIGN DEVELOPMENT          |
| 6   | 18 FEB 2022 | ISSUED FOR 30% CONSTRUCTION DOCUMENTS       |
| 7   | 09 MAR 2022 | ISSUED FOR SITE PLAN RESUBMISSION DOCUMENTS |
| 9   | 16 JUN 2022 | ISSUED FOR 60% CONSTRUCTION DOCUMENTS       |
| 12  | 06 OCT 2022 | ISSUED FOR BUILDING PERMIT DOCUMENTS        |
| 13  | 31 OCT 2022 | ISSUED FOR 93% CONSTRUCTION DOCUMENTS       |
| 22  | 16 FEB 2024 | ISSUED FOR TENDER                           |
| 24  | 05 MAR 2024 | ISSUED FOR SITE PLAN RESUBMISSION           |



-  Architectural Louver - Perforated Type - Refer Div. 08
-  Exterior Wall Type 1 - Refer to A550 & Div. 07
-  Exterior Wall Type 2 - Refer to A550 & Div. 07
-  Exterior Wall Type 3 - Refer to A550 & Div. 07
-  Exterior Wall Type 4 - Refer to A550 & Div. 07
-  Exterior Wall Type 5 - Refer to A550 & Div. 07
-  Exterior Wall Type 6 - Refer to A550 & Div. 07
-  Curtain Wall Type 1 - Triple Glazed Curtain Wall Clear glazing without frit Refer to Div. 08
-  Curtain Wall Type 2 - Triple Glazed Fibreglass Window Clear glazing without frit Refer to Div. 08
-  Punched Window Type 1 - Triple Glazed Fibreglass Window Clear glazing without frit Refer to Div. 08
-  Punched Window Type 2 - Triple Glazed Fibreglass Window Clear glazing without frit Refer to Div. 08



Contractor Must Check & Verify all Dimensions on the Job.  
 Do Not Scale Drawings.  
 All Drawings, Specifications and Related Documents are the Copyright Property of the Architect and Must be Returned Upon Request. Reproduction of Drawings, Specifications and Related Documents in Part or in Whole is Forbidden Without the Written permission of the Architect.  
 This Drawing is Not to be Used for Construction Until Signed by the Architect.

**GLADSTONE VILLAGE**  
**PHASE 1**  
 933 Gladstone Avenue - Phase 1  
 211006

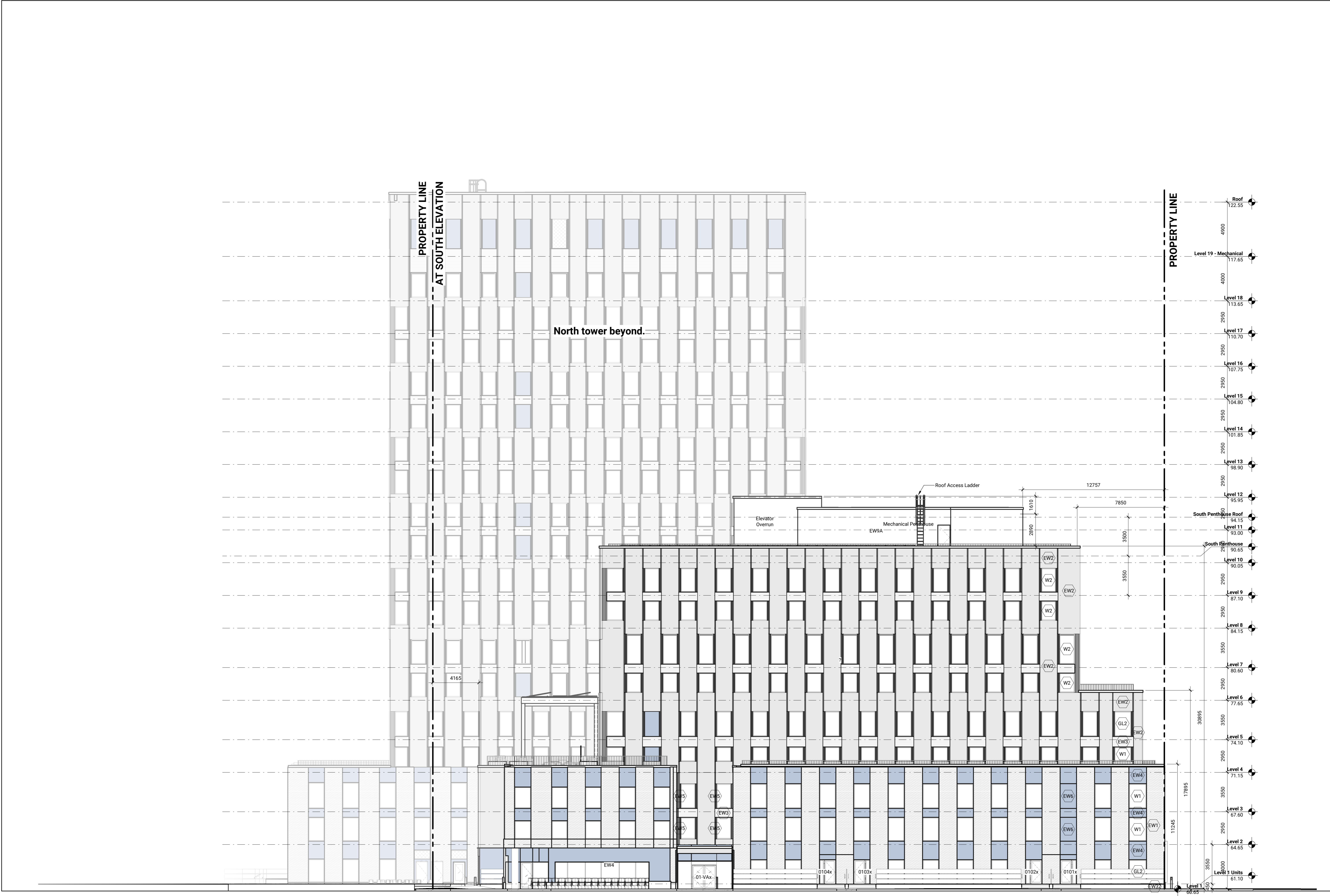
**East Elevation**  
 As indicated  
**A302**

*Andrew McCreight*  
**ANDREW MCCREIGHT**  
 MANAGER, DEVELOPMENT REVIEW CENTRAL  
 PLANNING, REAL ESTATE & ECONOMIC DEVELOPMENT  
 DEPARTMENT, CITY OF OTTAWA

**APPROVED**  
 By Andrew McCreight at 7:19 am, Mar 12, 2024

ISSUED

| No. | Date        | Description                                 |
|-----|-------------|---|
| 1   | 23 JUL 2021 | ISSUED FOR COSTING                          |
| 2   | 30 JUL 2021 | ISSUED FOR 100% SCHEMATIC DESIGN            |
| 4   | 08 SEP 2021 | ISSUED FOR SITE PLAN CONTROL                |
| 5   | 14 DEC 2021 | ISSUED FOR 100% DESIGN DEVELOPMENT          |
| 6   | 18 FEB 2022 | ISSUED FOR 30% CONSTRUCTION DOCUMENTS       |
| 7   | 09 MAR 2022 | ISSUED FOR SITE PLAN RESUBMISSION DOCUMENTS |
| 9   | 16 JUN 2022 | ISSUED FOR 60% CONSTRUCTION DOCUMENTS       |
| 12  | 06 OCT 2022 | ISSUED FOR BUILDING PERMIT DOCUMENTS        |
| 13  | 31 OCT 2022 | ISSUED FOR 93% CONSTRUCTION DOCUMENTS       |
| 22  | 16 FEB 2024 | ISSUED FOR TENDER                           |
| 24  | 05 MAR 2024 | ISSUED FOR SITE PLAN RESUBMISSION           |



- (AL1) Architectural Louver - Perforated Type - Refer Div. 08
- (EW1) Exterior Wall Type 1 - Refer to A050 & Div. 07
- (EW2) Exterior Wall Type 2 - Refer to A050 & Div. 07
- (EW3) Exterior Wall Type 3 - Refer to A050 & Div. 07
- (EW4) Exterior Wall Type 4 - Refer to A050 & Div. 07
- (EW5) Exterior Wall Type 5 - Refer to A050 & Div. 07
- (EW6) Exterior Wall Type 6 - Refer to A050 & Div. 07
- (CW1) Curtain Wall Type 1 - Triple Glazed Curtain Wall Clear glazing without fit Refer to Div. 08
- (CW2) Curtain Wall Type 2 - Triple Glazed Fibreglass Window Clear glazing without fit Refer to Div. 08
- (W1) Punched Window Type 1 - Triple Glazed Fibreglass Window Clear glazing without fit Refer to Div. 08
- (W2) Punched Window Type 2 - Triple Glazed Fibreglass Window Clear glazing without fit Refer to Div. 08



Contractor Must Check & Verify all Dimensions on the Job.  
 Do Not Scale Drawings.  
 All Drawings, Specifications and Related Documents are the Copyright Property of the Architect and Must Be Returned Upon Request. Reproduction of Drawings, Specifications and Related Documents in Part or in Whole is Forbidden Without the Written permission of the Architect.  
 This Drawing is Not to be Used for Construction Until Signed by the Architect.

**GLADSTONE VILLAGE**  
**PHASE 1**  
 933 Gladstone Avenue - Phase 1  
 211006

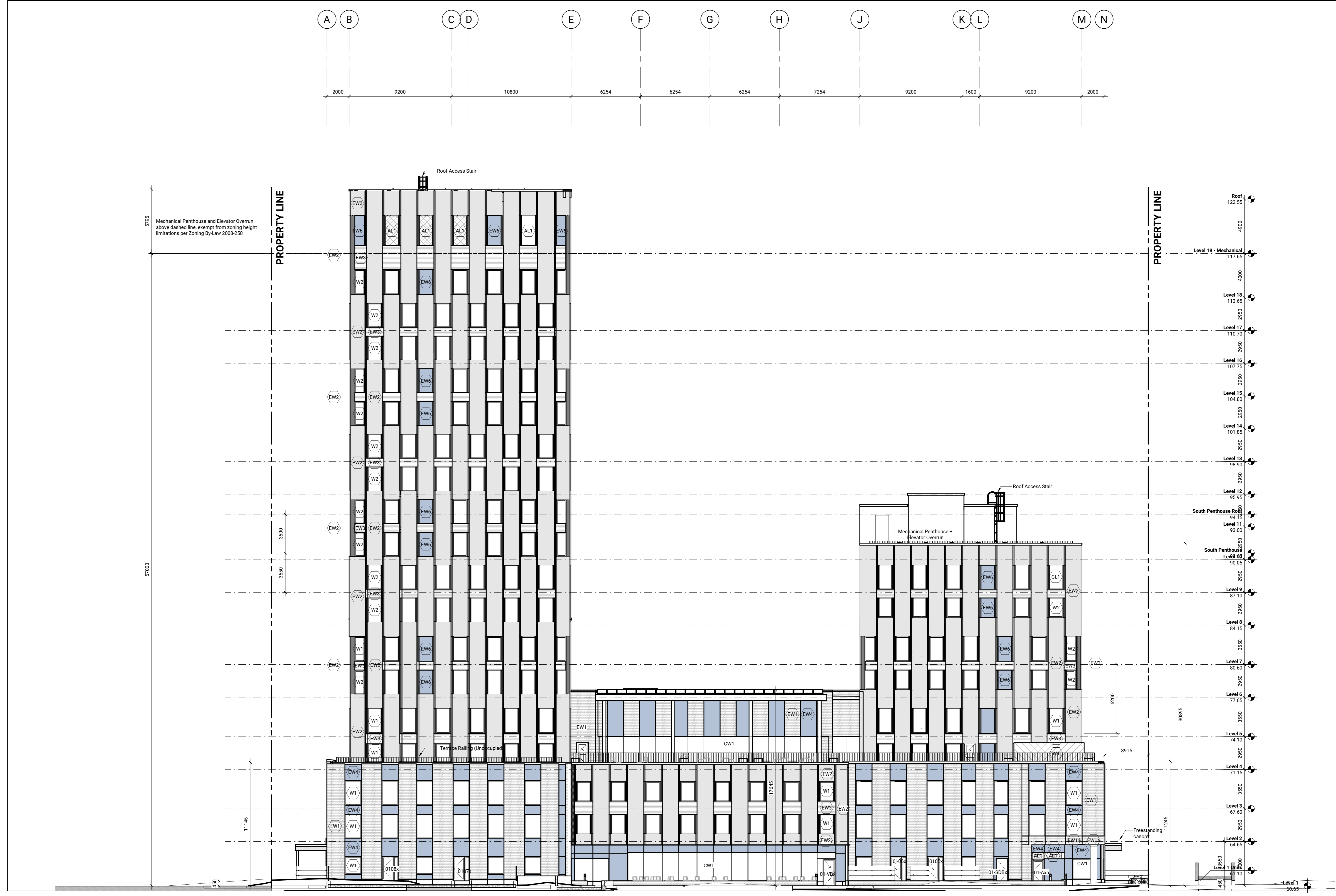
**South Elevation**  
 As indicated  
**A303**

*Andrew McCreight*  
**ANDREW MCCREIGHT**  
 MANAGER, DEVELOPMENT REVIEW CENTRAL  
 PLANNING, REAL ESTATE & ECONOMIC DEVELOPMENT  
 DEPARTMENT, CITY OF OTTAWA

**APPROVED**  
 By Andrew McCreight at 7:19 am, Mar 12, 2024

ISSUED

| No. | Date        | Description                                 |
|-----|-------------|---|
| 1   | 23 JUL 2021 | ISSUED FOR COSTING                          |
| 2   | 30 JUL 2021 | ISSUED FOR 100% SCHEMATIC DESIGN            |
| 4   | 08 SEP 2021 | ISSUED FOR SITE PLAN CONTROL                |
| 5   | 14 DEC 2021 | ISSUED FOR 100% DESIGN DEVELOPMENT          |
| 6   | 18 FEB 2022 | ISSUED FOR 30% CONSTRUCTION DOCUMENTS       |
| 7   | 09 MAR 2022 | ISSUED FOR SITE PLAN RESUBMISSION DOCUMENTS |
| 9   | 16 JUN 2022 | ISSUED FOR 60% CONSTRUCTION DOCUMENTS       |
| 12  | 06 OCT 2022 | ISSUED FOR BUILDING PERMIT DOCUMENTS        |
| 13  | 31 OCT 2022 | ISSUED FOR 93% CONSTRUCTION DOCUMENTS       |
| 22  | 16 FEB 2024 | ISSUED FOR TENDER                           |
| 24  | 05 MAR 2024 | ISSUED FOR SITE PLAN RESUBMISSION           |



- (AL1) Architectural Louver - Perforated Type - Refer Div. 08
- (EW1) Exterior Wall Type 1 - Refer to A550 & Div. 07
- (EW2) Exterior Wall Type 2 - Refer to A550 & Div. 07
- (EW3) Exterior Wall Type 3 - Refer to A550 & Div. 07
- (EW4) Exterior Wall Type 4 - Refer to A550 & Div. 07
- (EW5) Exterior Wall Type 5 - Refer to A550 & Div. 07
- (EW6) Exterior Wall Type 6 - Refer to A550 & Div. 07
- (CW1) Curtain Wall Type 1 - Triple Glazed Curtain Wall  
Clear glazing without frit  
Refer to Div. 08
- (CW2) Curtain Wall Type 2 - Triple Glazed Fiberglass Window  
Clear glazing without frit  
Refer to Div. 08
- (W1) Punched Window Type 1 - Triple Glazed Fiberglass Window  
Clear glazing without frit  
Refer to Div. 08
- (W2) Punched Window Type 2 - Triple Glazed Fiberglass Window  
Clear glazing without frit  
Refer to Div. 08



Contractor Must Check & Verify all Dimensions on the Job.  
 Do Not Scale Drawings.  
 All Drawings, Specifications and Related Documents are the Copyright Property of the Architect and Must be Protected Upon Request. Reproduction of Drawings, Specifications and Related Documents in Part or in Whole is Forbidden Without the Written permission of the Architect.  
 This Drawing is Not to be Used for Construction Until Signed by the Architect.

**GLADSTONE VILLAGE**  
**PHASE 1**  
 933 Gladstone Avenue - Phase 1  
 211006

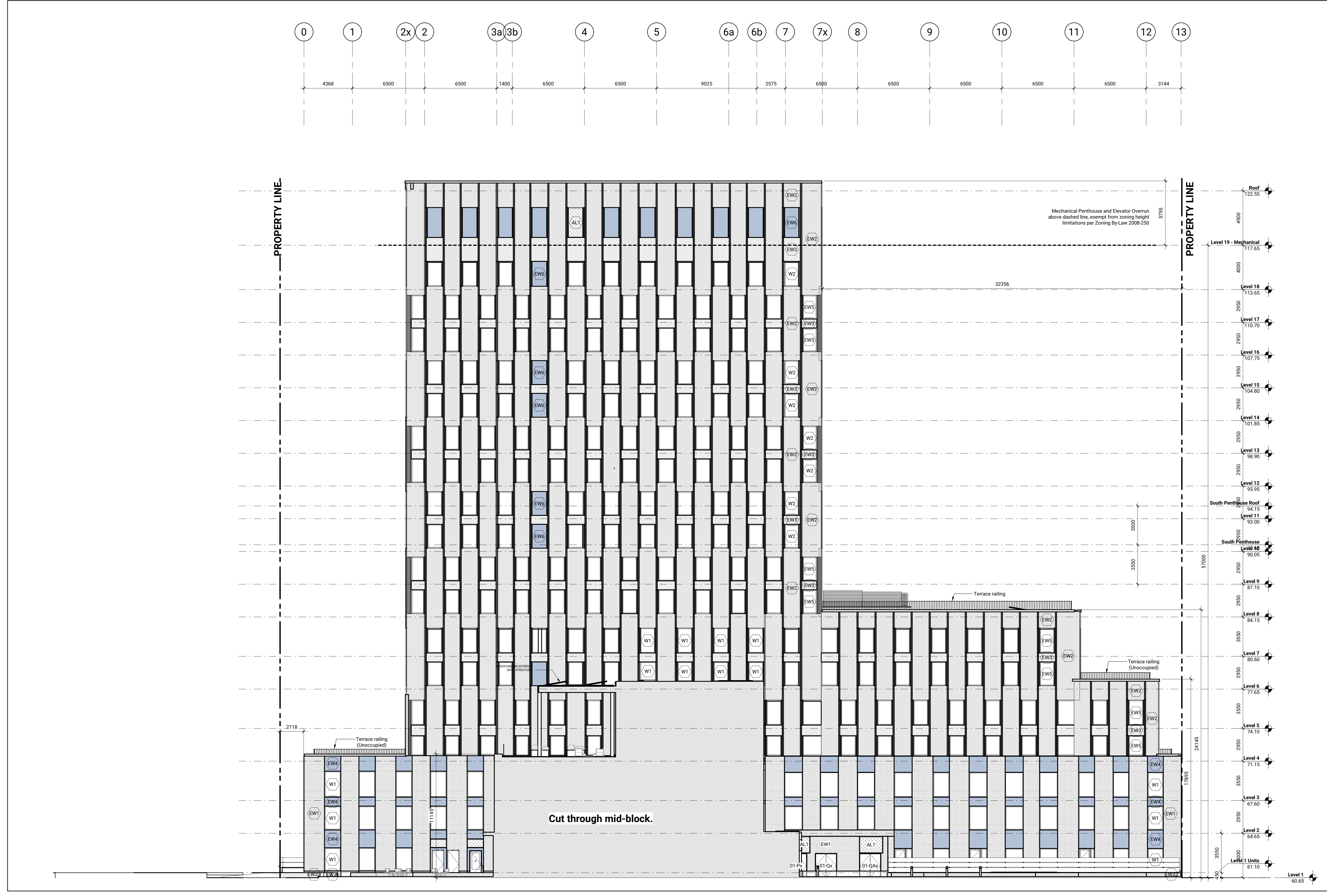
**West Elevation**  
 As Indicated  
**A304**

*Andrew McCreight*  
**ANDREW MCCREIGHT**  
 MANAGER, DEVELOPMENT REVIEW CENTRAL  
 PLANNING, REAL ESTATE & ECONOMIC DEVELOPMENT  
 DEPARTMENT, CITY OF OTTAWA

**APPROVED**  
 By Andrew McCreight at 7:19 am, Mar 12, 2024

ISSUED

| No. | Date        | Description                                 |
|-----|-------------|---|
| 1   | 23 JUL 2021 | ISSUED FOR COSTING                          |
| 2   | 30 JUL 2021 | ISSUED FOR 100% SCHEMATIC DESIGN            |
| 4   | 08 SEP 2021 | ISSUED FOR SITE PLAN CONTROL                |
| 5   | 14 DEC 2021 | ISSUED FOR 100% DESIGN DEVELOPMENT          |
| 6   | 18 FEB 2022 | ISSUED FOR 30% CONSTRUCTION DOCUMENTS       |
| 7   | 09 MAR 2022 | ISSUED FOR SITE PLAN RESUBMISSION DOCUMENTS |
| 9   | 16 JUN 2022 | ISSUED FOR 60% CONSTRUCTION DOCUMENTS       |
| 12  | 06 OCT 2022 | ISSUED FOR BUILDING PERMIT                  |
| 13  | 31 OCT 2022 | ISSUED FOR 93% CONSTRUCTION DOCUMENTS       |
| 22  | 16 FEB 2024 | ISSUED FOR TENDER                           |
| 24  | 05 MAR 2024 | ISSUED FOR SITE PLAN RESUBMISSION           |



- (AL1) Architectural Louver - Perforated Type - Refer Div. 08
- (EW1) Exterior Wall Type 1 - Refer to A050 & Div. 07
- (EW2) Exterior Wall Type 2 - Refer to A050 & Div. 07
- (EW3) Exterior Wall Type 3 - Refer to A050 & Div. 07
- (EW4) Exterior Wall Type 4 - Refer to A050 & Div. 07
- (EW5) Exterior Wall Type 5 - Refer to A050 & Div. 07
- (EW6) Exterior Wall Type 6 - Refer to A050 & Div. 07
- (CW1) Curtain Wall Type 1 - Triple Glazed Curtain Wall Clear glazing without frit Refer to Div. 08
- (CW2) Curtain Wall Type 2 - Triple Glazed Fibreglass Window Clear glazing without frit Refer to Div. 08
- (W1) Punched Window Type 1 - Triple Glazed Fibreglass Window Clear glazing without frit Refer to Div. 08
- (W2) Punched Window Type 2 - Triple Glazed Fibreglass Window Clear glazing without frit Refer to Div. 08



Contractor Must Check & Verify all Dimensions on the Job.  
 Do Not Scale Drawings.  
 All Drawings, Specifications and Related Documents are the Copyright Property of the Architect and Must be Protected Upon Request. Reproduction of Drawings, Specifications and Related Documents in Part or in Whole is Forbidden Without the Written permission of the Architect.  
 This Drawing is Not to be Used for Construction Until Signed by the Architect.

**GLADSTONE VILLAGE**  
 PHASE 1  
 933 Gladstone Avenue - Phase 1  
 211006

**Rebate Elevations**  
 As indicated

**A305**

2024-03-08 9:30:06 AM BIM 2024/03/08 09:30:06 AM C:\Users\mccreigh\OneDrive\Documents\211006-Gladstone-Phase 1\000-ARCH\0205-Building\REV1.rvt

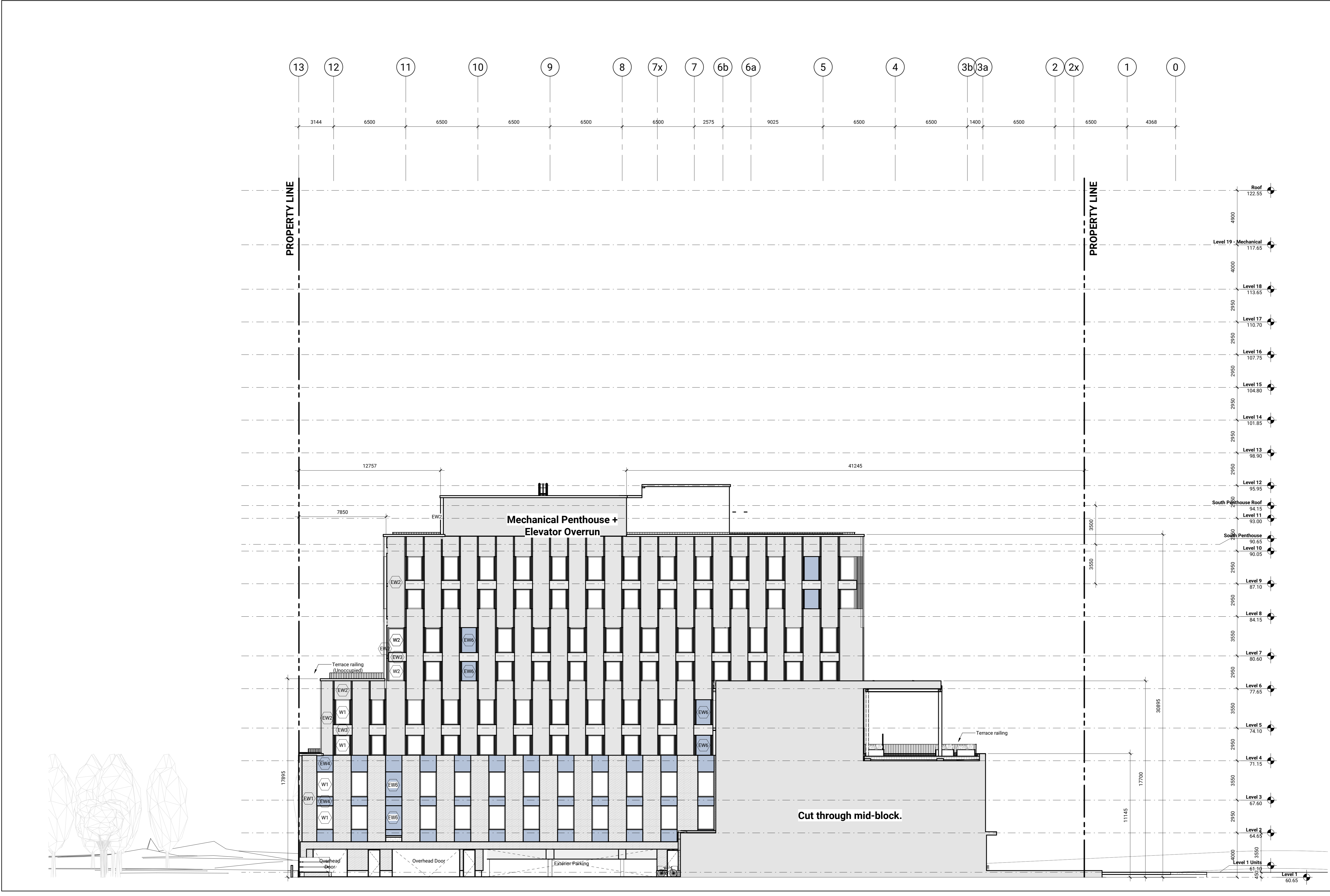
*Andrew McCreight*

**ANDREW MCCREIGHT**  
**MANAGER, DEVELOPMENT REVIEW CENTRAL**  
**PLANNING, REAL ESTATE & ECONOMIC DEVELOPMENT**  
**DEPARTMENT, CITY OF OTTAWA**

**APPROVED**  
 By Andrew McCreight at 7:19 am, Mar 12, 2024

ISSUED

| No. | Date        | Description                                 |
|-----|-------------|---|
| 1   | 23 JUL 2021 | ISSUED FOR COSTING                          |
| 2   | 30 JUL 2021 | ISSUED FOR 100% SCHEMATIC DESIGN            |
| 4   | 08 SEP 2021 | ISSUED FOR SITE PLAN CONTROL                |
| 5   | 14 DEC 2021 | ISSUED FOR 100% DESIGN DEVELOPMENT          |
| 6   | 18 FEB 2022 | ISSUED FOR 30% CONSTRUCTION DOCUMENTS       |
| 7   | 09 MAR 2022 | ISSUED FOR SITE PLAN RESUBMISSION DOCUMENTS |
| 9   | 16 JUN 2022 | ISSUED FOR 60% CONSTRUCTION DOCUMENTS       |
| 12  | 06 OCT 2022 | ISSUED FOR BUILDING PERMIT DOCUMENTS        |
| 13  | 31 OCT 2022 | ISSUED FOR 93% CONSTRUCTION DOCUMENTS       |
| 22  | 16 FEB 2024 | ISSUED FOR TENDER                           |
| 24  | 05 MAR 2024 | ISSUED FOR SITE PLAN RESUBMISSION           |



- (AL1) Architectural Louver - Perforated Type - Refer Div. 08
- (EW1) Exterior Wall Type 1 - Refer to A050 & Div. 07
- (EW2) Exterior Wall Type 2 - Refer to A050 & Div. 07
- (EW3) Exterior Wall Type 3 - Refer to A050 & Div. 07
- (EW4) Exterior Wall Type 4 - Refer to A050 & Div. 07
- (EW5) Exterior Wall Type 5 - Refer to A050 & Div. 07
- (EW6) Exterior Wall Type 6 - Refer to A050 & Div. 07
- (CW1) Curtain Wall Type 1 - Triple Glazed Curtain Wall Clear glazing without frit Refer to Div. 08
- (CW2) Curtain Wall Type 2 - Triple Glazed Fibreglass Window Clear glazing without frit Refer to Div. 08
- (W1) Punched Window Type 1 - Triple Glazed Fibreglass Window Clear glazing without frit Refer to Div. 08
- (W2) Punched Window Type 2 - Triple Glazed Fibreglass Window Clear glazing without frit Refer to Div. 08



Contractor Must Check & Verify all Dimensions on the Job.  
 Do Not Scale Drawings.  
 All Drawings, Specifications and Related Documents are the Copyright Property of the Architect and Must be Protected Upon Request. Reproduction of Drawings, Specifications and Related Documents in Part or in Whole is Forbidden Without the Written Permission of the Architect.  
 This Drawing is Not to be Used for Construction Until Signed by the Architect.

**GLADSTONE VILLAGE**  
**PHASE 1**  
 933 Gladstone Avenue - Phase 1  
 211006

**Rebate Elevations**  
 As indicated

**A306**

2024-03-08 09:30:34 AM BIM 360://11006-Gladstone-SC1101-11006-ARCH-050-Building-REV1.rvt