

Andrew McCreight
ANDREW MCCREIGHT
 MANAGER (A), DEVELOPMENT REVIEW CENTRAL
 PLANNING, REAL ESTATE & ECONOMIC DEVELOPMENT
 DEPARTMENT, CITY OF OTTAWA

APPROVED
 By Andrew McCreight at 2:45 pm, Aug 15, 2023

10 Steven's Avenue

Code	Qty.	Botanical Name	Common Name	Size	Condition
AC	3	Amelanchier canadensis	Tree Serviceberry	60mm cal	B + B specimen
CC	3	Crataegus crus-galli 'Inermis'	Thornless Cockspur Hawthorn	60mm cal	B + B specimen
MH	3	Malus 'Harvest Gold'	Harvest Gold Crabapple	60mm cal	B + B specimen

Code	Qty.	Botanical Name	Common Name	Size	Condition
ac	3	Amelanchier canadensis	Serviceberry	250cm HT.	B + B specimen
CF	5	Cornus racemosa	Grey Dogwood	250cm HT.	B + B specimen
lr	3	Syringa reticulata	Japanese Tree Lilac	250cm HT.	B + B specimen
vl	7	Viburnum lentago	Nannyberry	250cm HT.	B + B specimen

Code	Qty.	Botanical Name	Common Name	Size	Condition
HK	225	Hypericum kalmianum	St. John's Wort	30cm HT.	Pot
SA	110	Spiraea alba	Meadowsweet	60cm HT.	Pot

Drawing Remains the Property of/Copyright Reserved by Gino J. Aiello Landscape Architect. Do Not Use or Reproduce Without Approval of Gino J. Aiello.
NOT To Be Used For Construction Unless indicated by Revision: "FOR LANDSCAPE CONSTRUCTION".
Contractor is Responsible for Verification of Site Locations of all Utilities. Report any Discrepancies Between Site and Drawing Immediately to Gino J. Aiello. Do NOT Proceed Until Clarified.

REFER TO TCR BY IFS

Circle Indicates DBH x 10 (CRZ)

4 Existing Tree To Remain

4 Existing Tree To Be Removed

LANDSCAPE PLAN LEGEND

CT Proposed Coniferous Tree

DT Proposed Deciduous Tree

Proposed Planting Bed

Proposed Riverwash Stone On Filter Cloth

Proposed Concrete Paving

Proposed Patio Screen / Fence

Parking Garage Wall

BELOW GRADE SERVICES REFER TO CIVIL /CUP

U/G Water Service

U/G Storm Service

U/G Sanitary Service

U/G Gas Service

U/G TelCo Service

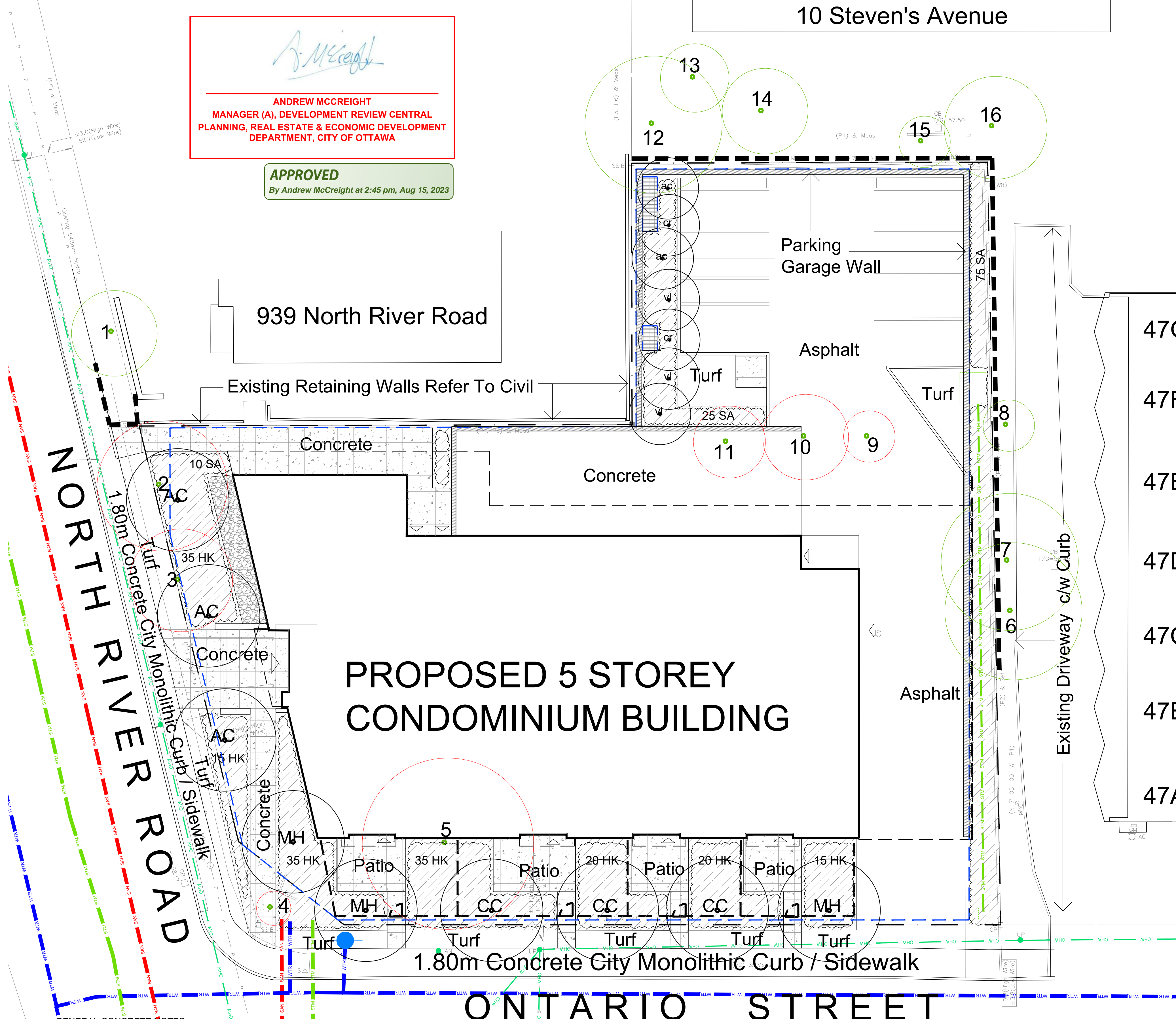
U/G Hydro Service

O/H Hydro Service

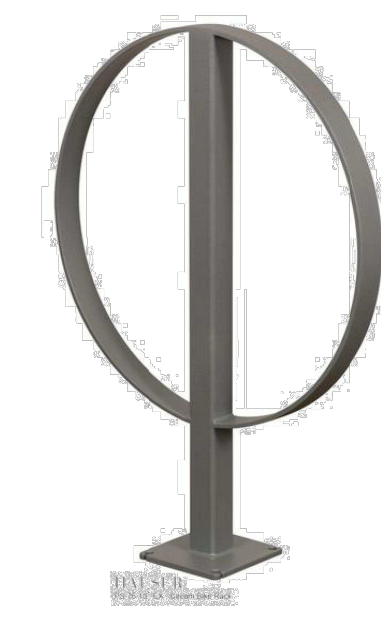
Fire Hydrant

FD Siamese Connection

Light Standard Base



Circum Bicycle Rack
 P5-76-101-TP- Circum Bike Rack



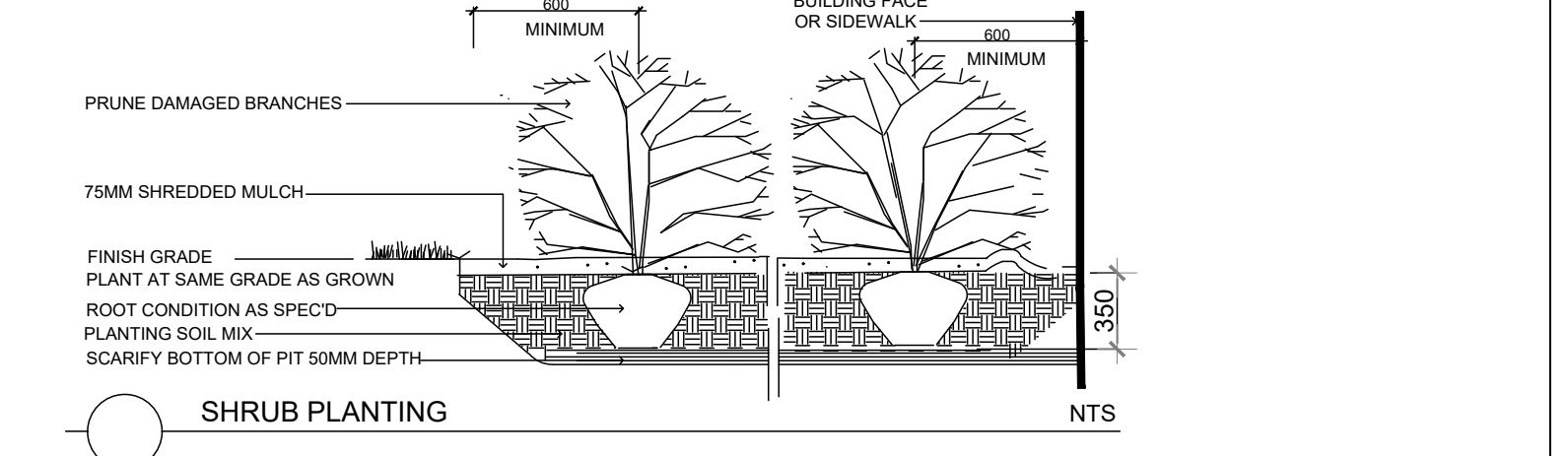
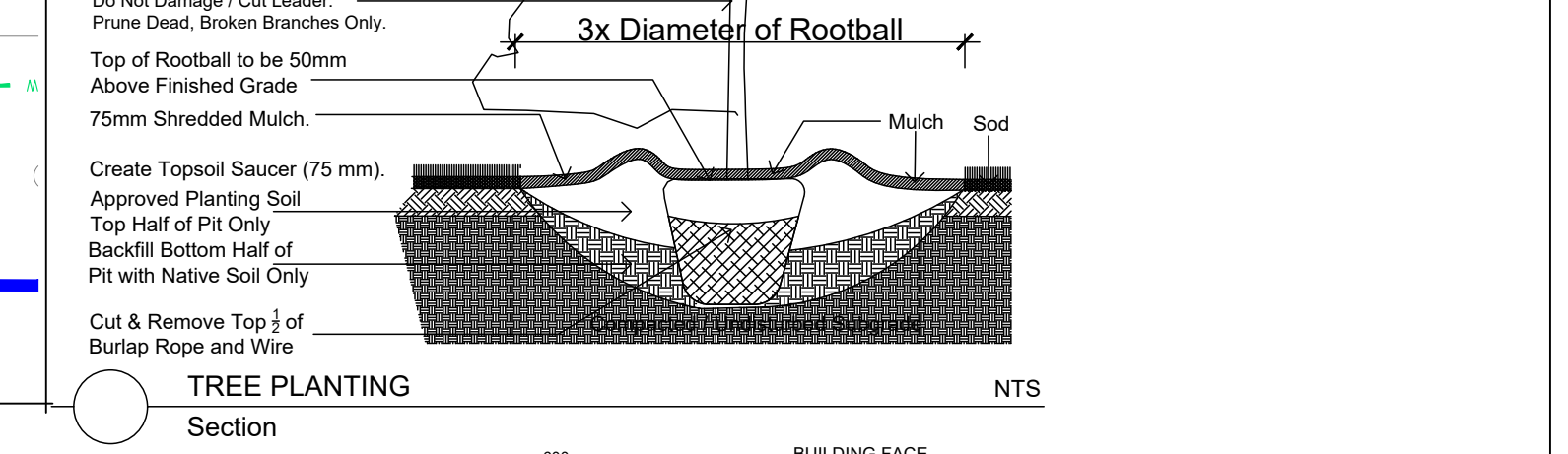
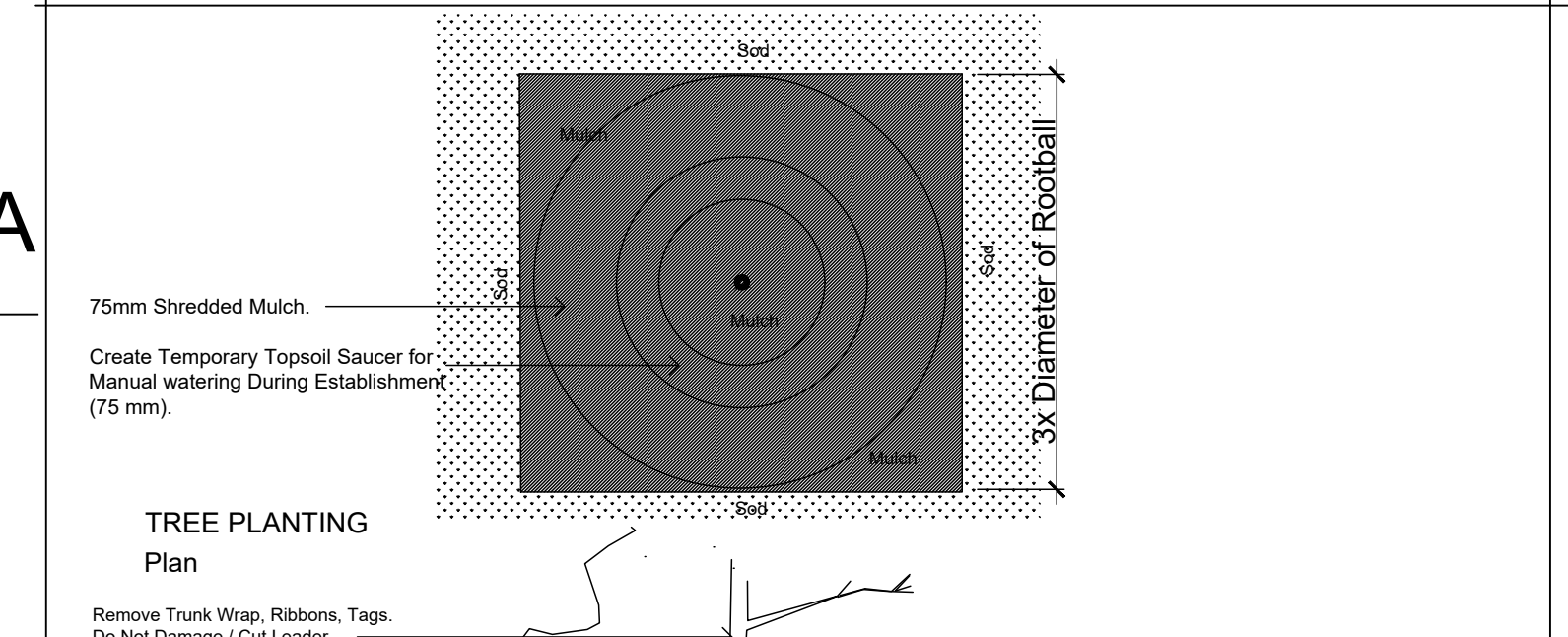
TURF AREAS TO BE SOD C/W 150MM DEPTH TOPSOIL ON APPROVED SUBGRADE | SOD TO BE #1 GRADE TURFGRASS NURSERY SOD per NSGA - Fine Fescue/Kentucky Bluegrass Sod | PLANTING MIX TO BE APPROVED BY LANDSCAPE ARCHITECT | PLANT MATERIAL TO MEET CNLA STANDARDS/BE APPROVED BY LANDSCAPE ARCHITECT PRIOR TO PLANTING | ALL MATERIALS & WORK TO BE MAINTAINED UNTIL FINAL ACCEPTANCE. (MOWING TURF, WEEDING BEDS, WATERING TURF & PLANTS) & INCLUDE 1 YEAR WARRANTY FROM DATE OF FINAL ACCEPTANCE | PROVIDE WATERING OF ALL PLANT MATERIAL AS REQUIRED FOR PROPER ESTABLISHMENT, UNTIL END OF WARRANTY PERIOD | REFER TO CIVIL ENGINEER'S DRAWING FOR ELEVATIONS / GRADING |

The Landscape Plan is to be read in conjunction with the grading, servicing, site and survey plan | Bare root material to be planted in season only | All plant material locations to be staked on site by the landscape contractor and checked by the landscape architect prior to planting | All trees to be preserved on or directly adjacent to the site will be protected | Plant material are to be installed a minimum of: 3.0m away from any part of any hydro transformer, 3.0m corridor between a fire hydrant and the curb, a 2.5m radius beside or behind a fire hydrant, 2.0m from any servicing/utility line or structure |

HAUSER SITE FURNITURE

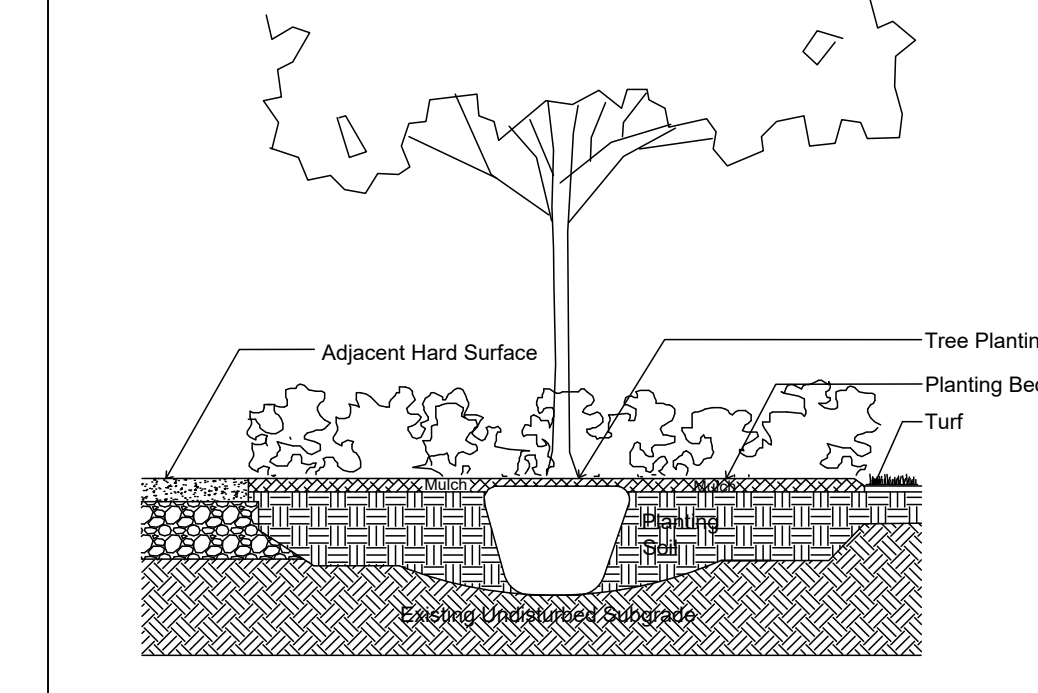
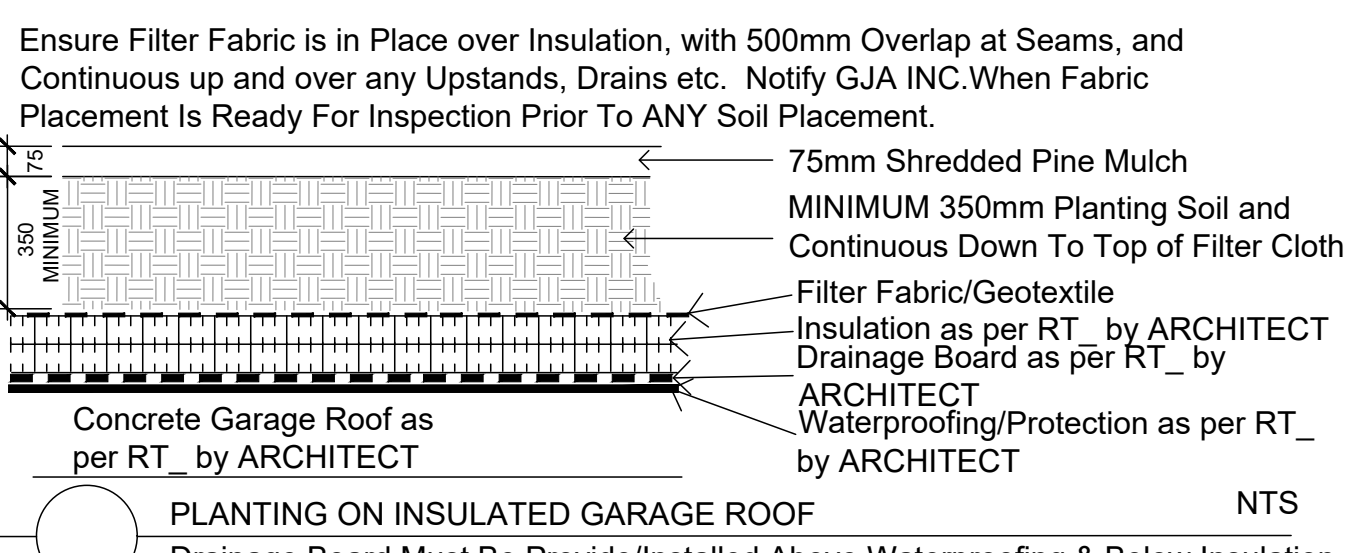
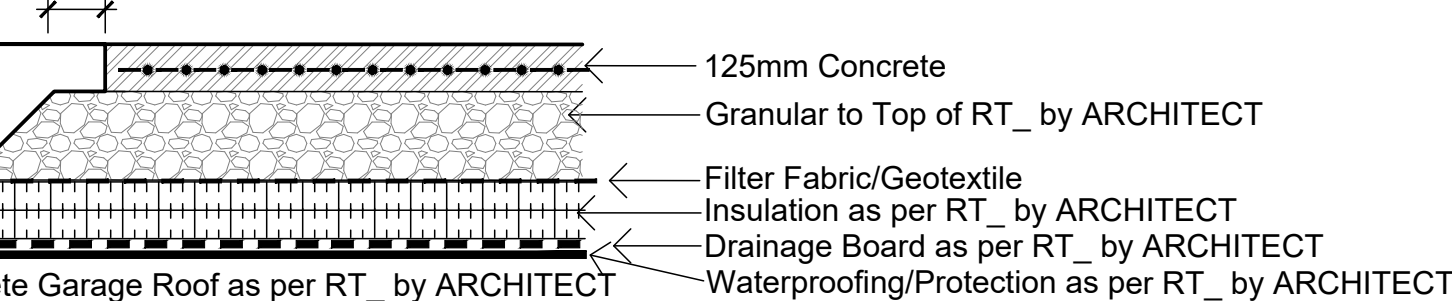
sales@hausersite.com
 800-268-7328
 hausersite.com

TYPICAL DETAILS

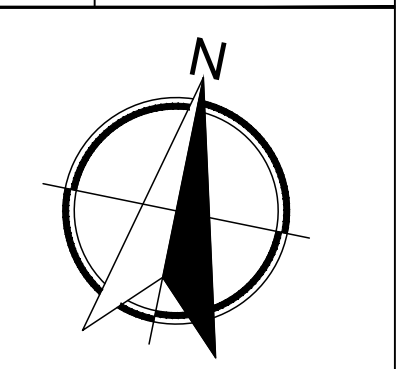
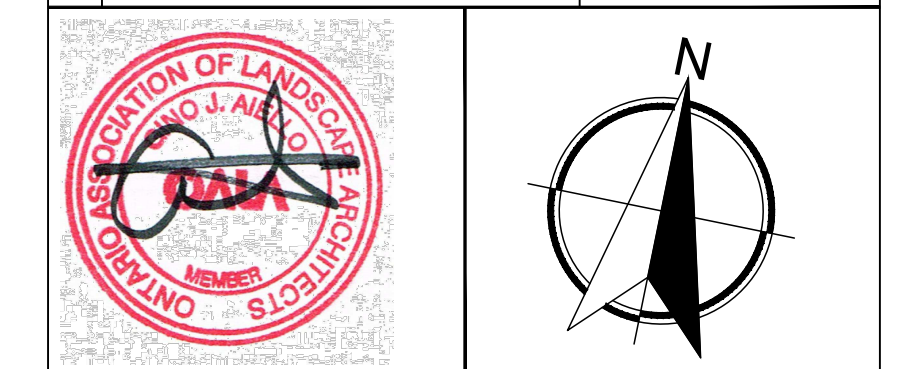


GENERAL CONCRETE NOTES:
 ALL CONCRETE FINISHES TO BE APPROVED BY GJA LANDSCAPE ARCHITECT.

SAWCUT and EXPANSION JOINT LAYOUT FOR ALL AREAS TO BE MARKED ON SITE IN RED CHALK, REVIEWED, ADJUSTED AND APPROVED BY GJA LANDSCAPE ARCHITECT PRIOR TO ANY CONCRETE POURING / CUTTING.
 TYPE 1
 35 MPa C1 125mm Thick, 6% Air Entrainment 6x6 Wire Mesh, Fibre Exp. Joints at all Hard Edges, Sawcut Control Joints (1" depth) as per plan +2.0m O.C. minimum c/w WOOD FLOAT FINISH - TOOL EDGE FIRST, THEN WIPE OFF TOOL MARKS WHILE APPLYING FINISH



3.0	THIRD SUBMISSION SPC	NOVEMBER 7 2022
2.0	SECOND SUBMISSION SPC	FEBRUARY 28 2021
1.0	FIRST SUBMISSION SPC	SEPTEMBER 21 2021
0.0	REVIEW / COORDINATION	2021
No.	Revision	Date



Property **Gemstone (River Road)**
 Owner **GP Inc.**
 252 Argyle Ave Ottawa, ON, K2P 1B9

Gino J. Aiello | landscape architect GJALA.com
 GJA Inc. Gino@GJALA.com (613) 286 5130
 110 Dabroy Road Unit # 9 | Ottawa Ontario K2T 0C2

Project **Proposed 5 Storey Condominium Building**
 949 North River Road

Drawing **Landscape Plan**

Scale: 1:125
 City of Ottawa
 Dwg #18583

Sheet Number **L1**

D07-12-21-0150