

10 Steven's Avenue

Code	Qty.	Botanical Name	Common Name	Size	Condition
AC	3	Amelanchier canadensis	Tree Serviceberry	60mm cal	B + B specimen
ac	3	Amelanchier canadensis	Serviceberry	250cm Ht.	B + B specimen
cr	5	Cornus racemosa	Grey Dogwood	250cm Ht.	B + B specimen
sr	3	Syringa reticulata	Japanese Tree Lilac	250cm Ht.	B + B specimen
vf	7	Viburnum lentago	Nannyberry	250cm Ht.	B + B specimen

Code	Qty.	Botanical Name	Common Name	Size	Condition
HK	225	Hypericum kalmianum	St. John's Wort	30cm Ht.	Pot
SA	110	Spiraea alba	Meadowsweet	60cm Ht.	Pot

Drawing Remains the Property of/Copyright Reserved by Gino J. Aiello Landscape Architect. Do Not Use or Reproduce Without Approval of Gino J. Aiello. NOT To Be Used For Construction Unless indicated by Revision: "FOR LANDSCAPE CONSTRUCTION". Contractor is Responsible for Verification of Site Locations of all Utilities. Report any Discrepancies Between Site and Drawing Immediately to Gino J. Aiello. Do NOT Proceed Until Clarified.

REFER TO TCR BY IFS

Circle Indicates DBH x 10 (CRZ)

4 Existing Tree To Remain

4 Existing Tree To Be Removed

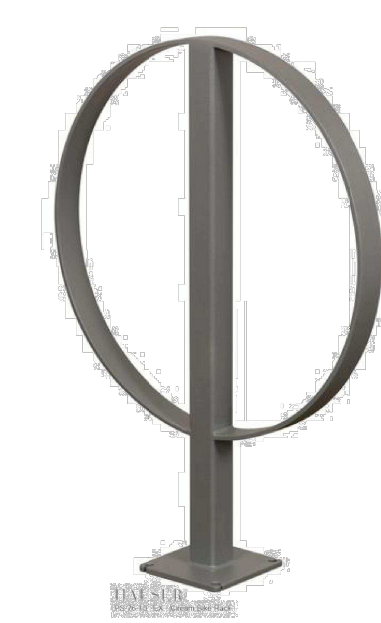
LANDSCAPE PLAN LEGEND

- Proposed Coniferous Tree
 - Proposed Deciduous Tree
 - Proposed Planting Bed
 - Proposed Riverwash Stone On Filter Cloth
 - Proposed Concrete Paving
 - Proposed Patio Screen / Fence
 - Parking Garage Wall
- BELOW GRADE SERVICES REFER TO CIVIL /CUP
- U/G Water Service
 - U/G Storm Service
 - U/G Sanitary Service
 - U/G Gas Service
 - U/G TelCo Service
 - U/G Hydro Service
 - O/H Hydro Service
 - Fire Hydrant
 - FD Siamese Connection
 - Light Standard Base

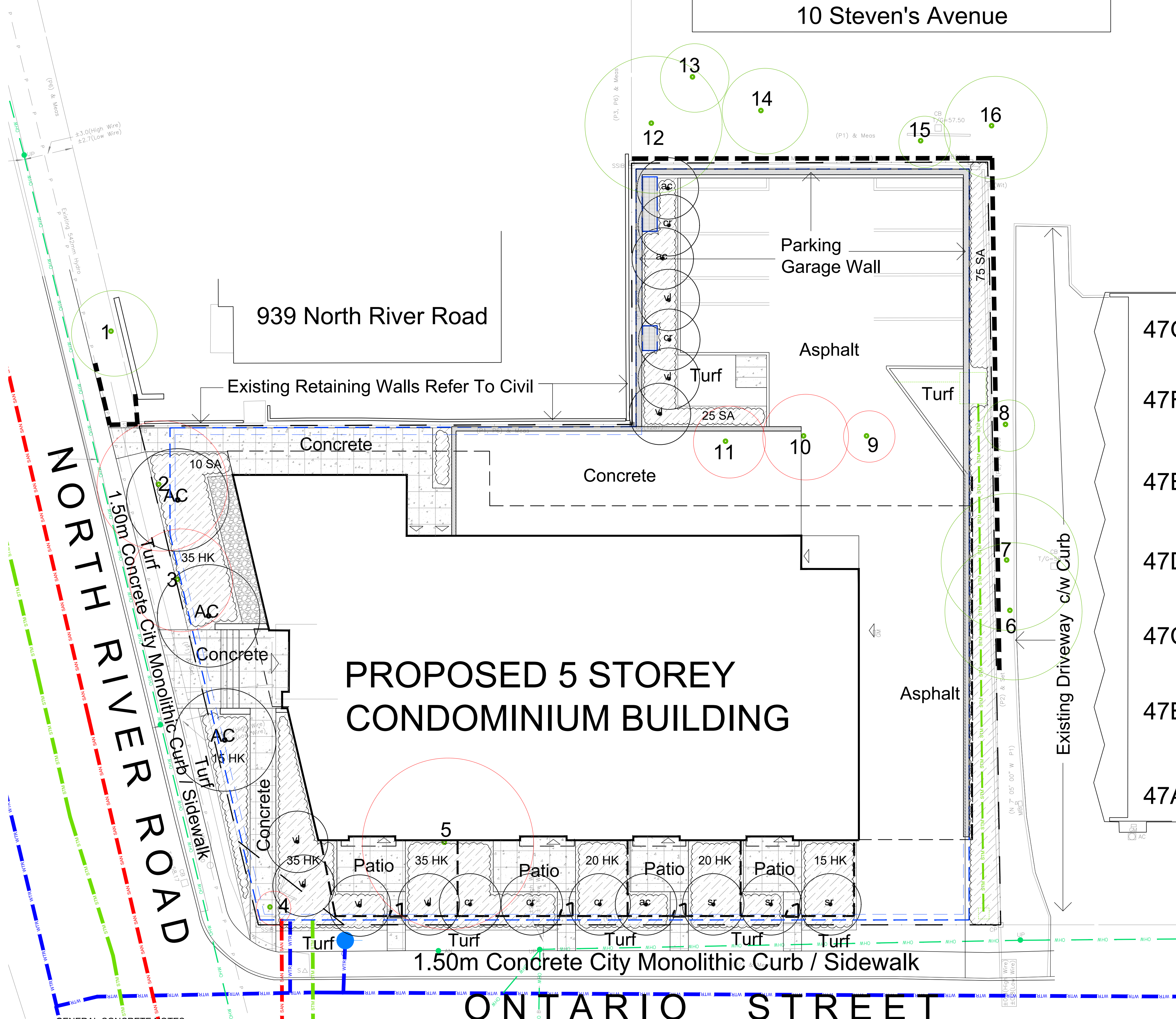
TURF AREAS TO BE SOD C/W 150MM DEPTH TOPSOIL ON APPROVED SUBGRADE | SOD TO BE #1 GRADE TURFGRASS NURSERY SOD per NSGA - Fine Fescue/Kentucky Bluegrass Sod | PLANTING MIX TO BE APPROVED BY LANDSCAPE ARCHITECT | PLANT MATERIAL TO MEET CNLA STANDARDS/BE APPROVED BY LANDSCAPE ARCHITECT PRIOR TO PLANTING | ALL MATERIALS & WORK TO BE MAINTAINED UNTIL FINAL ACCEPTANCE. (MOWING TURF & PLANTS) & INCLUDE 1 YEAR WARRANTY FROM DATE OF FINAL ACCEPTANCE | PROVIDE WATERING OF ALL PLANT MATERIAL AS REQUIRED FOR PROPER ESTABLISHMENT, UNTIL END OF WARRANTY PERIOD | REFER TO CIVIL ENGINEER'S DRAWING FOR ELEVATIONS / GRADING |

The Landscape Plan is to be read in conjunction with the grading, servicing, site and survey plan | Bare root material to be planted in season only | All plant material locations to be staked on site by the landscape contractor and checked by the landscape architect prior to planting | All trees to be preserved on or directly adjacent to the site will be protected | Plant material are to be installed a minimum of: 3.0m away from any part of any hydro transformer, 3.0m corridor between a fire hydrant and the curb, a 2.5m radius beside or behind a fire hydrant, 2.0m from any servicing/utility line or structure |

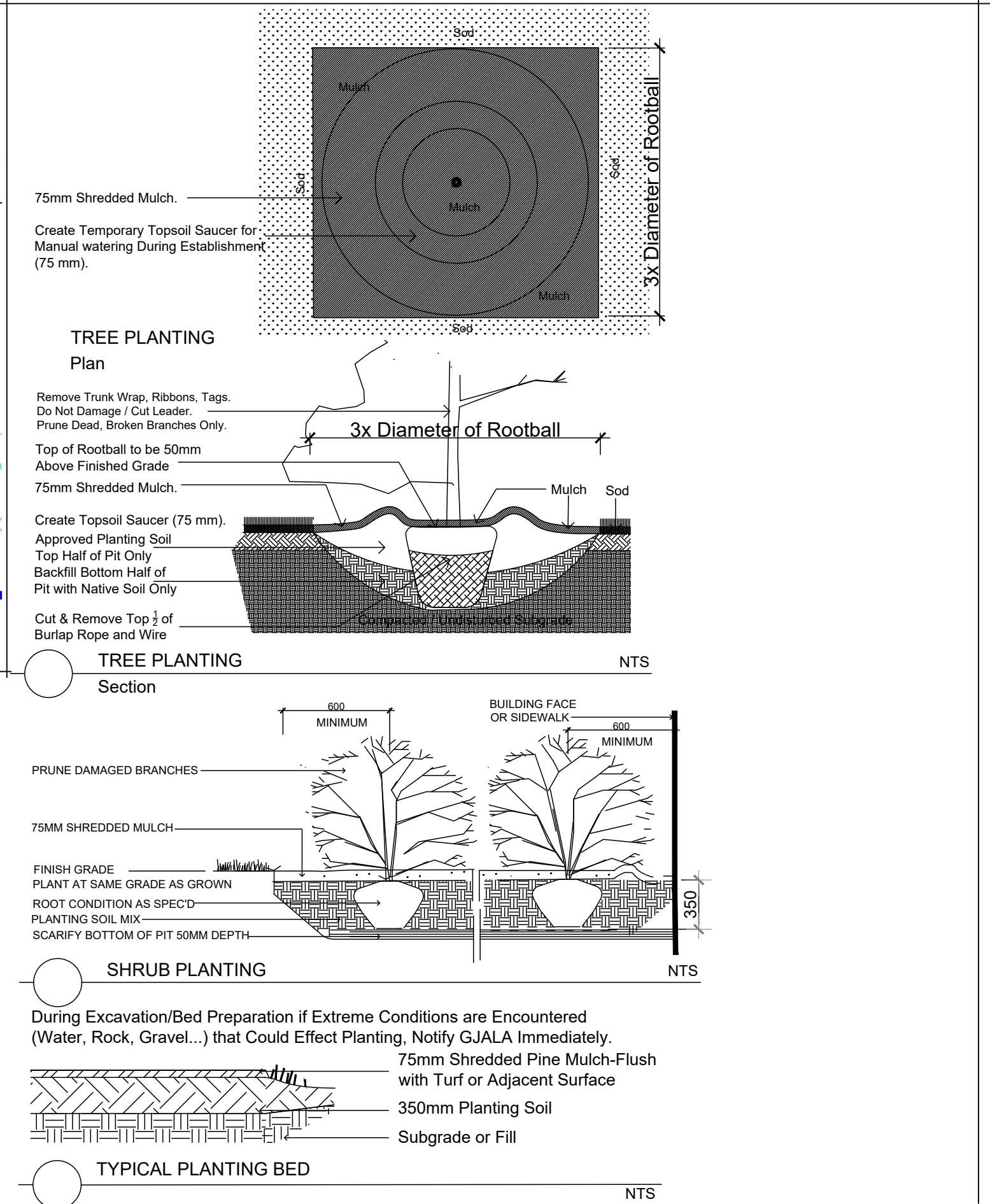
Circum Bicycle Rack
PS-76-101-TP- Circum Bike Rack
Our Circum Bicycle Rack features a welded tubular and flat-bar steel construction. It is available in your choice of Hauser/GTE powdercoat finishes, or Hauser/SHIELD Thermoplastic finishes.



HAUSER SITE FURNITURE
sales@hausersite.com
800-268-7328
hausersite.com



TYPICAL DETAILS



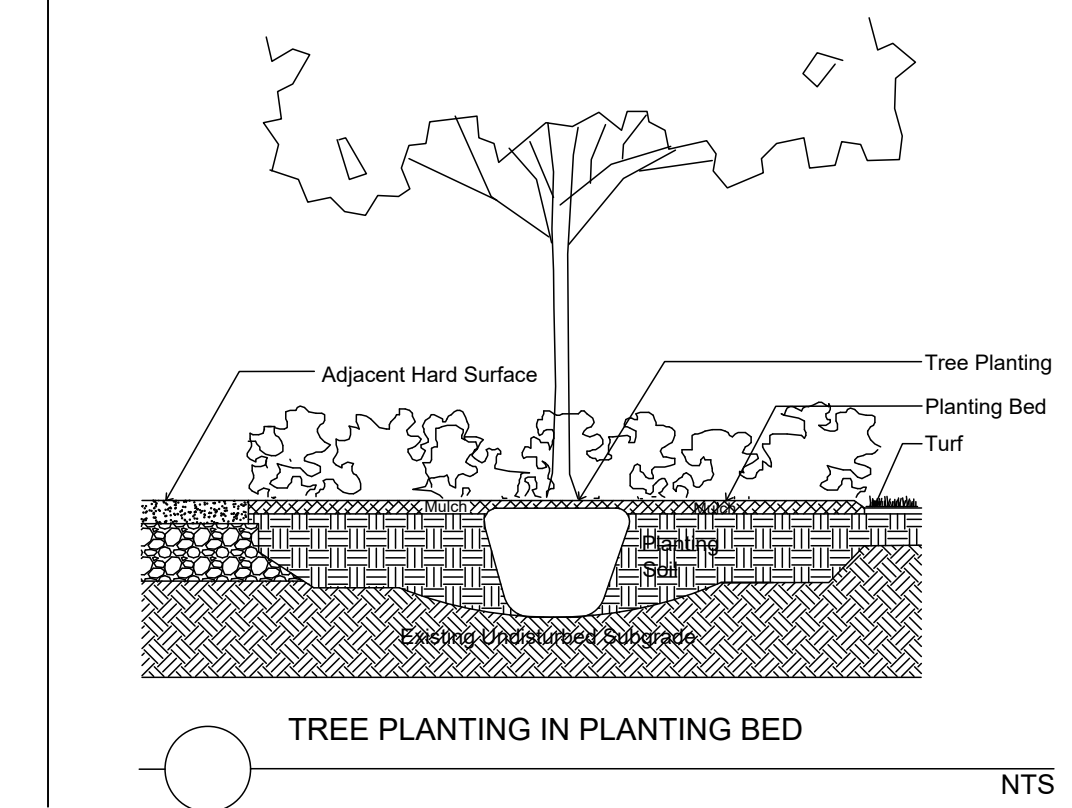
GENERAL CONCRETE NOTES:
ALL CONCRETE FINISHES TO BE APPROVED BY GJA LANDSCAPE ARCHITECT.
SAWCUT and EXPANSION JOINT LAYOUT FOR ALL AREAS TO BE MARKED ON SITE IN RED CHALK, REVIEWED, ADJUSTED AND APPROVED BY GJA LANDSCAPE ARCHITECT PRIOR TO ANY CONCRETE POURING / CUTTING.
TYPE 1
35 MPa C1 125mm Thick, 6% Air Entrainment 6x6 Wire Mesh, Fibre Exp. Joints at all Hard Edges, Sawcut Control Joints (1" depth) as per plan +2.0m O.C. minimum c/w WOOD FLOAT FINISH - TOOL EDGE FIRST, THEN WIPE OFF TOOL MARKS WHILE APPLYING FINISH

CONCRETE PAVING TYPE 1
Provide Shop Drawing for Proposed Expansion and Control Joint Layout for Approval

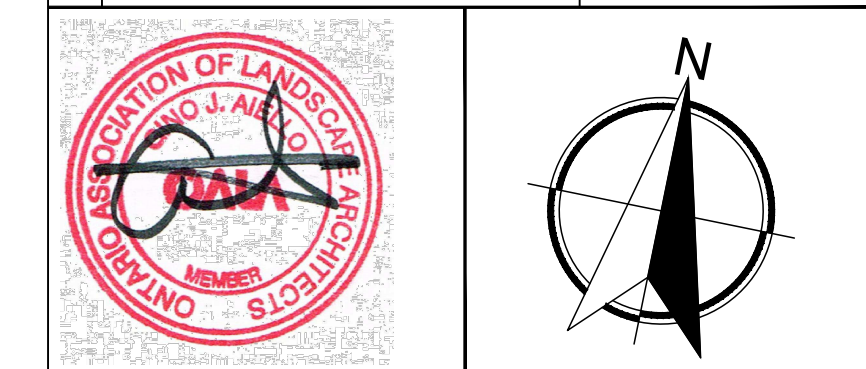
Ensure Filter Fabric is in Place over Insulation, with 500mm Overlap at Seams, and Continuous up and over any Upstands, Drains etc. Notify GJA INC. When Fabric Placement is Ready For Inspection Prior To ANY Soil Placement.

75mm Shredded Pine Mulch
MINIMUM 350mm Planting Soil and Continuous Down To Top of Filter Cloth
Filter Fabric/Geotextile
Insulation as per RT_ by ARCHITECT
Drainage Board as per RT_ by ARCHITECT
Waterproofing/Protection as per RT_ by ARCHITECT

PLANTING ON INSULATED GARAGE ROOF
Drainage Board Must Be Provide/Installed Above Waterproofing & Below Insulation If/Where Soil Depths Exceed 350mm - use Commercial Screened Topsoil BELOW Planting Soil



2.0	SECOND SUBMISSION SPC	FEBRUARY 28 2021
1.0	FIRST SUBMISSION SPC	SEPTEMBER 21 2021
0.0	REVIEW / COORDINATION	2021
No.	Revision	Date



Property Gemstone (River Road)
Owner GP Inc.
252 Argyle Ave Ottawa, ON, K2P 1B9

Gino J. Aiello | landscape architect GJALA.com
GJA Inc. Gino@GJALA.com (613) 286 5130
110 Dabroy Road Unit #9 | Ottawa Ontario | K2T 0C2

Project Proposed 5 Storey Condominium Building
949 North River Road

Drawing Landscape Plan

Scale: 1:125
City of Ottawa
Dwg #18583

Sheet Number
L1

D07-12-21-0150